

Phone : +(221) 76.026.88.15
 +(221) 33.957.49.37
Fax : +(221) 33.820.06.00
AFTN : GOOOYNYX
E-mail : aim-gooo@asecna.org
Web : <https://aim.asecna.aero>



AIRAC AIP SUP

NR 65/A/26GO

APRIL 16th , 2026

BUREAU NOTAM INTERNATIONAL DE L'OUEST AFRICAIN

B.P. 8155 Aeroport International Blaise DIAGNE Dakar/Diass-SENEGAL

BENIN – BURKINA FASO – COTE D'IVOIRE – GUINEE BISSAU – MALI – MAURITANIE – NIGER – SENEGAL – TOGO

**PROCEDURES DE VOL DE ZIGUINCHOR
ZIGUINCHOR FLIGHT PROCEDURES**

**/
GOGG**

DATE D'ENTREE EN VIGUEUR / EFFECTIVE DATE	14 Mai 2026/May 14th, 2026
VALIDITE / VALIDITY	PERM

INSTRUMENT APPROACH CHART

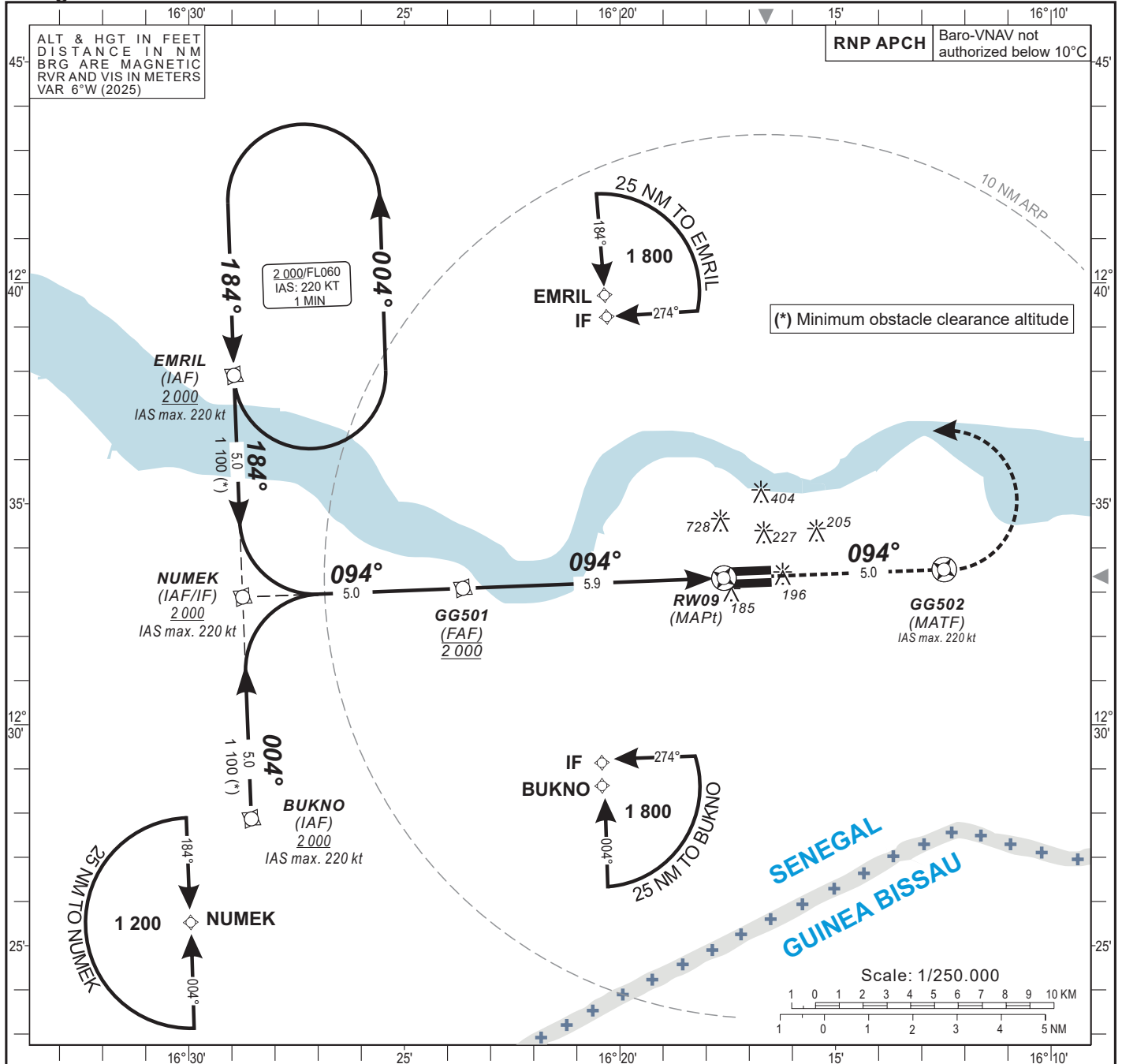
AERODROME ELEV: 79
THR RWY 09 ELEV: 63

TWR : 118.7

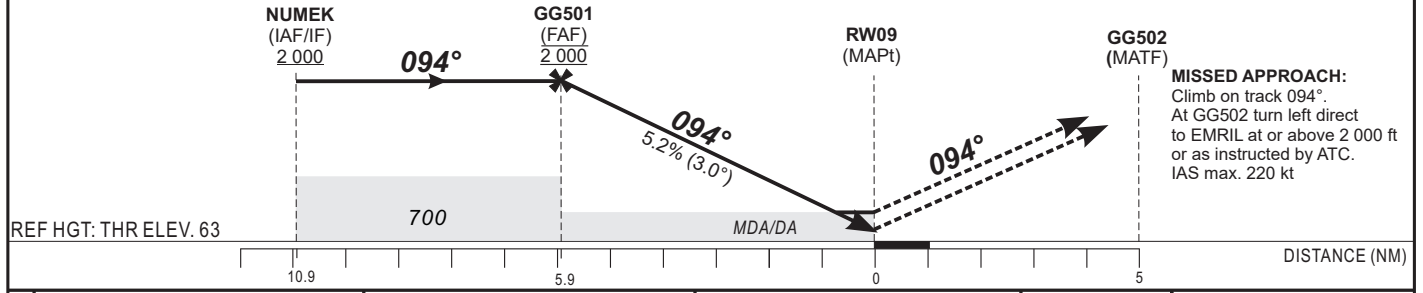
RNP RWY 09

Categories **A-B-C**

HEIGHTS RELATED TO THR RWY 09 ELEV



TRANSITION ALTITUDE: 3 100	FAF	5	4	3	2	1	DISTANCE TO RWY09 (NM)
	2 000	1 710	1 390	1 070	750	440	ALTITUDE (FT)



CAT	LNAV/VNAV				LNAV			CIRCLING 1				Timing	FAF / THR 5.9 NM			
	OCA (OCH)	DA	DH	RVR	OCA (OCH)	MDA	MDH	RVR	OCA (OCH)	MDA	MDH			VIS		
A	311 (248)	320 (250)		1300	431 (368)	440 (370)		1700	1024 (945)	1030 (950)		3500	90	3 Min 56	140	2 Min 32
B	323 (260)	330 (260)		1300	431 (368)	440 (370)		1700	1024 (945)	1030 (950)		3500	100	3 Min 32	150	2 Min 22
C	335 (272)	340 (280)		1300	431 (368)	440 (370)		1700	1122 (1043)	1130 (1050)		3500	110	3 Min 13	160	2 Min 13
D	-	-		-	-	-		-	-	-		-	120	2 Min 57	170	
													130	2 Min 43	180	

Notes: **1** Daytime only. OCH and MDH AAL - RDH: 15 m

TABULAR DESCRIPTION

RNP RWY 09

Serial Number	Path Descriptor	Waypoint Identifier	Fly-Over	Course °M(°T)	Magnetic Variation	Distance (NM)	Turn Direction	Altitude (ft)	Speed limit (Kt)	VPA/TCH (°/m)	Navigation Specification
010	IF	EMRIL	—	—	—	—	—	+2000	-220	—	RNP APCH
020	TF	NUMEK	—	184(177.7)	—	5.0	—	+2000	-220	—	RNP APCH
010	IF	BUKNO	—	—	—	—	—	+2000	-220	—	RNP APCH
020	TF	NUMEK	—	004(357.7)	—	5.0	—	+2000	-220	—	RNP APCH
010	IF	NUMEK	—	—	—	—	—	+2000	-220	—	RNP APCH
020	TF	GG501	—	094(087.7)	—	5.0	—	@2000	—	—	RNP APCH
030	TF	RW09	Y	094(087.7)	—	5.9	—	@113	—	3.0/15	RNP APCH
040	CF	GG502	Y	094(087.7)	—	5.0	—	—	-220	—	RNP APCH
050	DF	EMRIL	—	—	—	—	L	+2000	-220	—	RNP APCH
010	IF	EMRIL	—	—	—	—	—	+2000	-220	—	RNP APCH
020	HM	EMRIL	—	184(177.7)	—	—	L	+2000	-220	—	RNP APCH

WAYPOINT LIST
RNP RWY 09

Waypoint Identifier	Coordinates	
EMRIL	12°37'54.344"N	016°28'57.267"W
NUMEK	12°32'53.244"N	016°28'45.110"W
BUKNO	12°27'52.142"N	016°28'32.960"W
GG501	12°33'05.135"N	016°23'38.605"W
GG502	12°33'30.785"N	016°12'28.661"W
RW09	12°33'19.107"N	016°17'35.183"W

INSTRUMENT APPROACH CHART

AERODROME ELEV: 79
THR RWY 27 ELEV: 79

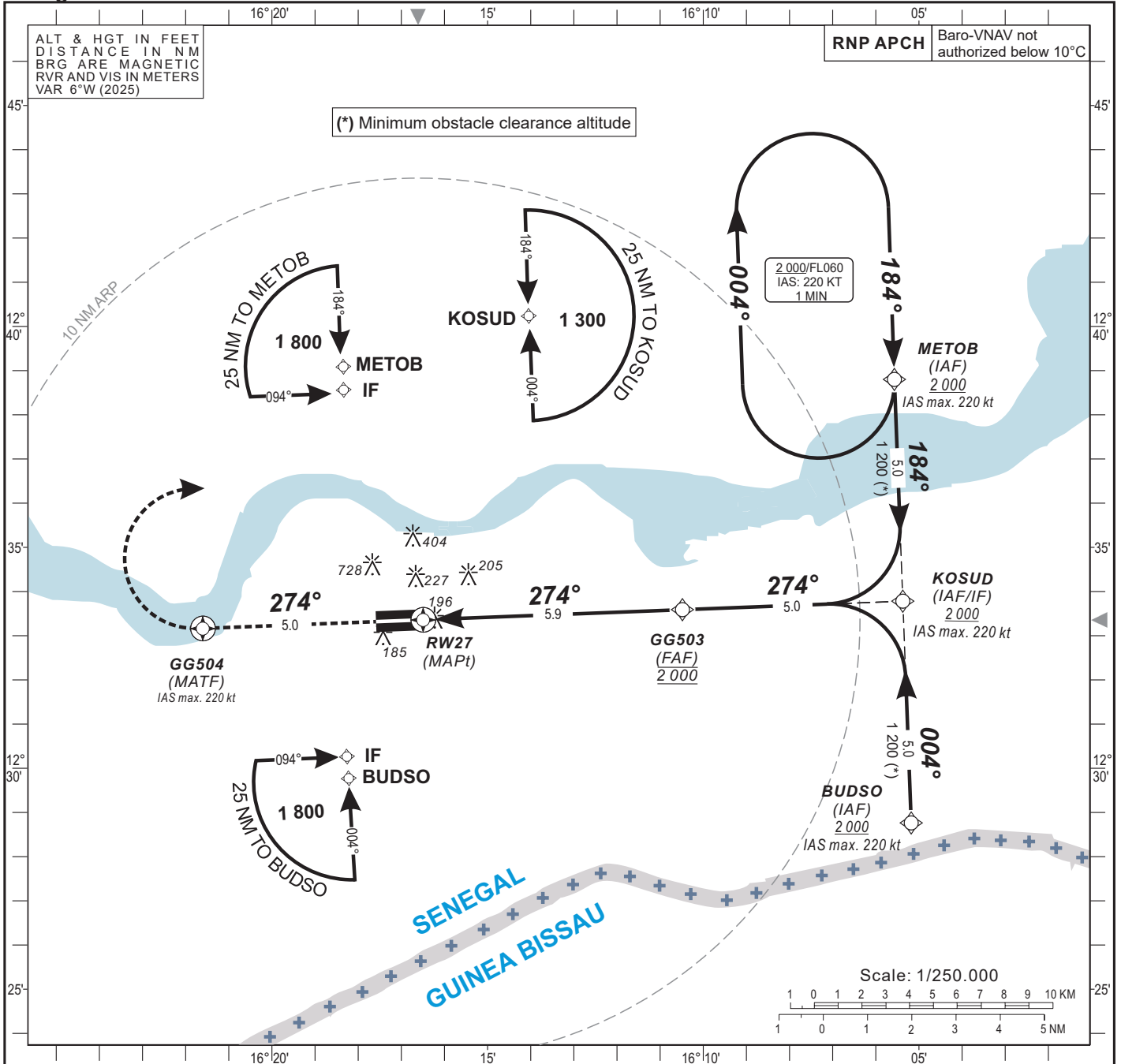
ZIGUINCHOR (GOGG)

Categories **A-B-C**

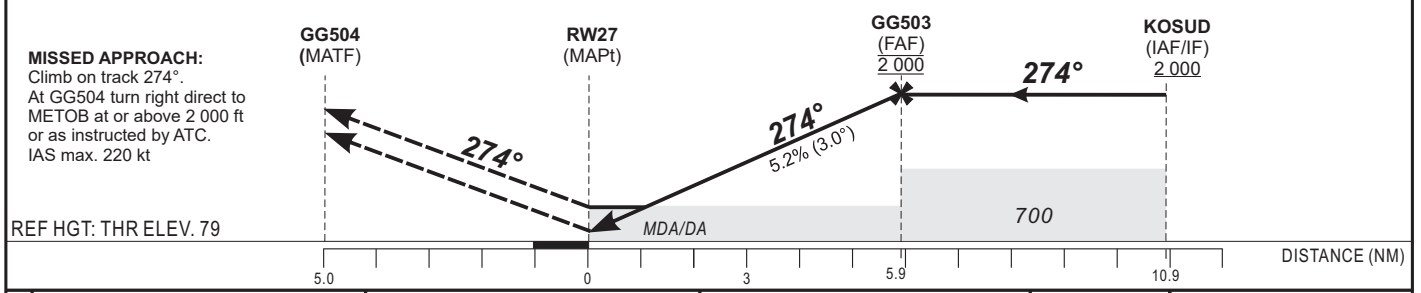
HEIGHTS RELATED TO THR RWY 27 ELEV

TWR : 118.7

RNP RWY 27



TRANSITION ALTITUDE: 3 100	DISTANCE TO RWY27 (NM)	2	3	4	5	FAF
	ALTITUDE (FT)	770	1 090	1 410	1 720	2 000



CAT	LNAV/VNAV				LNAV				CIRCLING 1			Timing	FAF / THR 5.9 NM			
	OCA (OCH)	DA	DH	RVR	OCA (OCH)	MDA	MDH	RVR	OCA (OCH)	MDA	MDH			VIS		
A	542 (463)	550 (470)		2200	774 (695)	780 (700)		3200	1024 (945)	1030 (950)		3500	90	3 Min 56	140	2 Min 32
B	554 (475)	560 (480)		2200	774 (695)	780 (700)		3200	1024 (945)	1030 (950)		3500	100	3 Min 32	150	2 Min 22
C	573 (494)	580 (500)		2300	774 (695)	780 (700)		3200	1122 (1043)	1130 (1050)		3500	110	3 Min 13	160	2 Min 13
D	-	-	-	-	-	-	-	-	-	-	-	-	120	2 Min 57	170	
													130	2 Min 43	180	

Notes:

1 Daytime only. OCH and MDH AAL

- RDH: 15 m

TABULAR DESCRIPTION

RNP RWY 27

Serial Number	Path Descriptor	Waypoint Identifier	Fly-Over	Course °M(°T)	Magnetic Variation	Distance (NM)	Turn Direction	Altitude (ft)	Speed limit (Kt)	VPA/TCH (°/m)	Navigation Specification
010	IF	METOB	—	—	—	—	—	+2000	-220	—	RNP APCH
020	TF	KOSUD	—	184(177.8)	—	5.0	—	+2000	-220	—	RNP APCH
010	IF	BUDSO	—	—	—	—	—	+2000	-220	—	RNP APCH
020	TF	KOSUD	—	004(357.8)	—	5.0	—	+2000	-220	—	RNP APCH
010	IF	KOSUD	—	—	—	—	—	+2000	-220	—	RNP APCH
020	TF	GG503	—	274(267.8)	—	5.0	—	@2000	—	—	RNP APCH
030	TF	RW27	Y	274(267.8)	—	5.9	—	@129	—	3.0/15	RNP APCH
040	CF	GG504	Y	274(267.8)	—	5.0	—	—	-220	—	RNP APCH
050	DF	METOB	—	—	—	—	R	+2000	-220	—	RNP APCH
010	IF	METOB	—	—	—	—	—	+2000	-220	—	RNP APCH
020	HM	METOB	—	184(177.8)	—	—	R	+2000	-220	—	RNP APCH

WAYPOINT LIST
RNP RWY 27

Waypoint Identifier	Coordinates	
METOB	12°38'47.979"N	016°05'34.125"W
KOSUD	12°33'46.862"N	016°05'22.420"W
BUDSO	12°28'45.743"N	016°05'10.723"W
GG503	12°33'35.319"N	016°10'28.953"W
GG504	12°33'09.871"N	016°21'35.823"W
RW27	12°33'21.625"N	016°16'29.307"W

INSTRUMENT APPROACH CHART

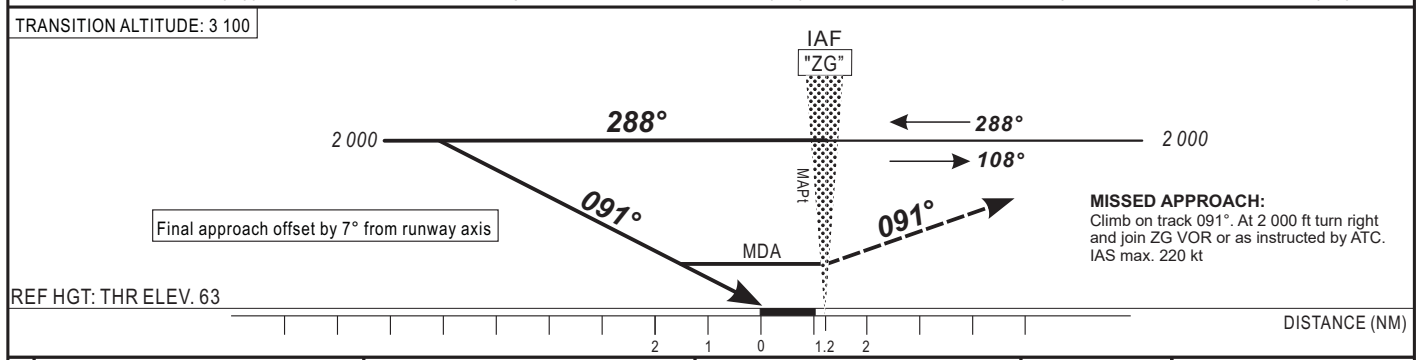
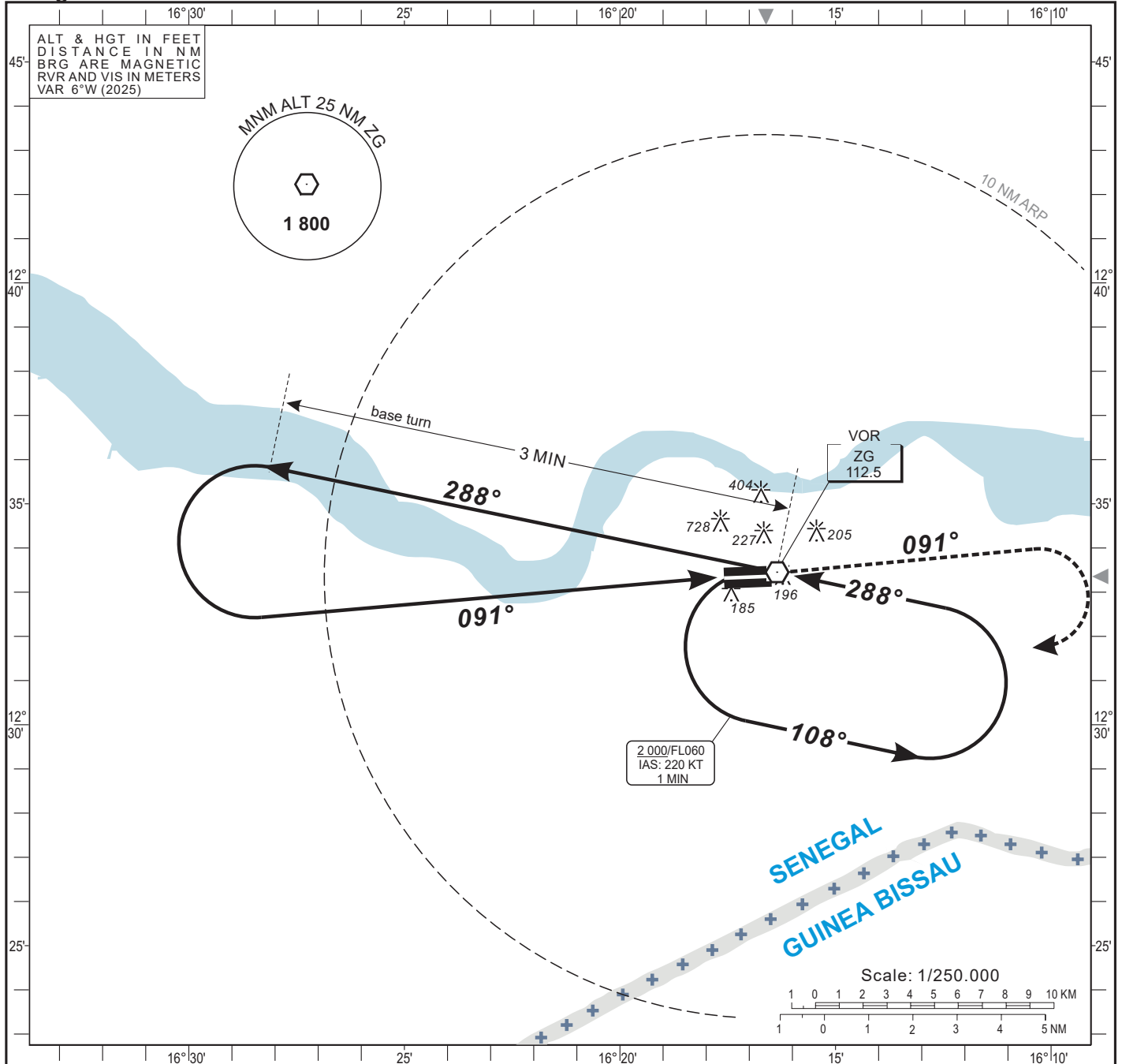
ZIGUINCHOR (GOGG)

Categories **A-B-C**

AERODROME ELEV: 79
 THR RWY 09 ELEV: 63
 HEIGHTS RELATED TO THR RWY 09 ELEV

TWR : 118.7

VOR RWY 09



CAT	VOR			CIRCLING 1				Timing
	OCA (OCH)	MDA MDH	RVR	OCA (OCH)	MDA MDH	VIS		
A	805 (742)	810 (750)	3500	1024 (945)	1030 (950)	3500		
B	805 (742)	810 (750)	3500	1024 (945)	1030 (950)	3500		
C	805 (742)	810 (750)	3500	1122 (1043)	1130 (1050)	3500		
D	-	-	-	-	-	-		

Notes: **1** Daytime only. OCH and MDH AAL

KT	MIN	SEC	KT	MIN	SEC
90			140		
100			150		
110			160		
120			170		
130			180		

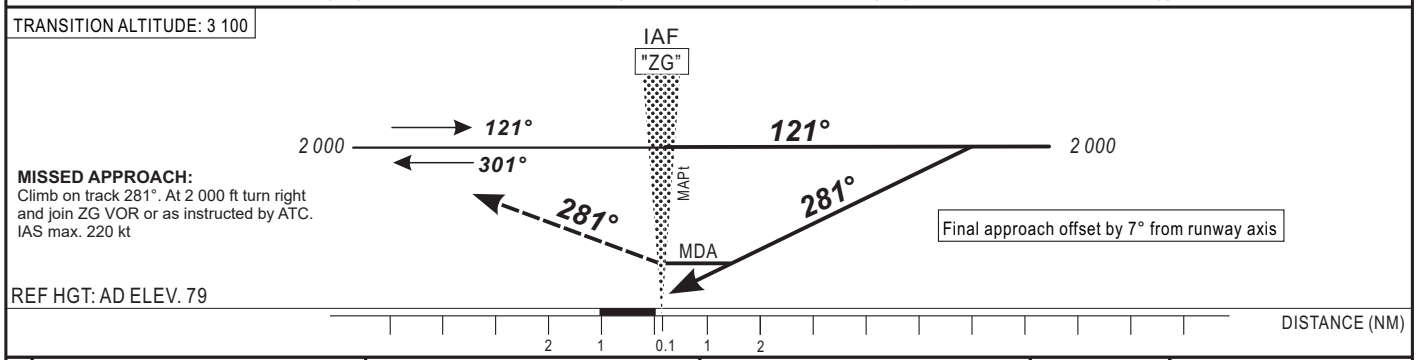
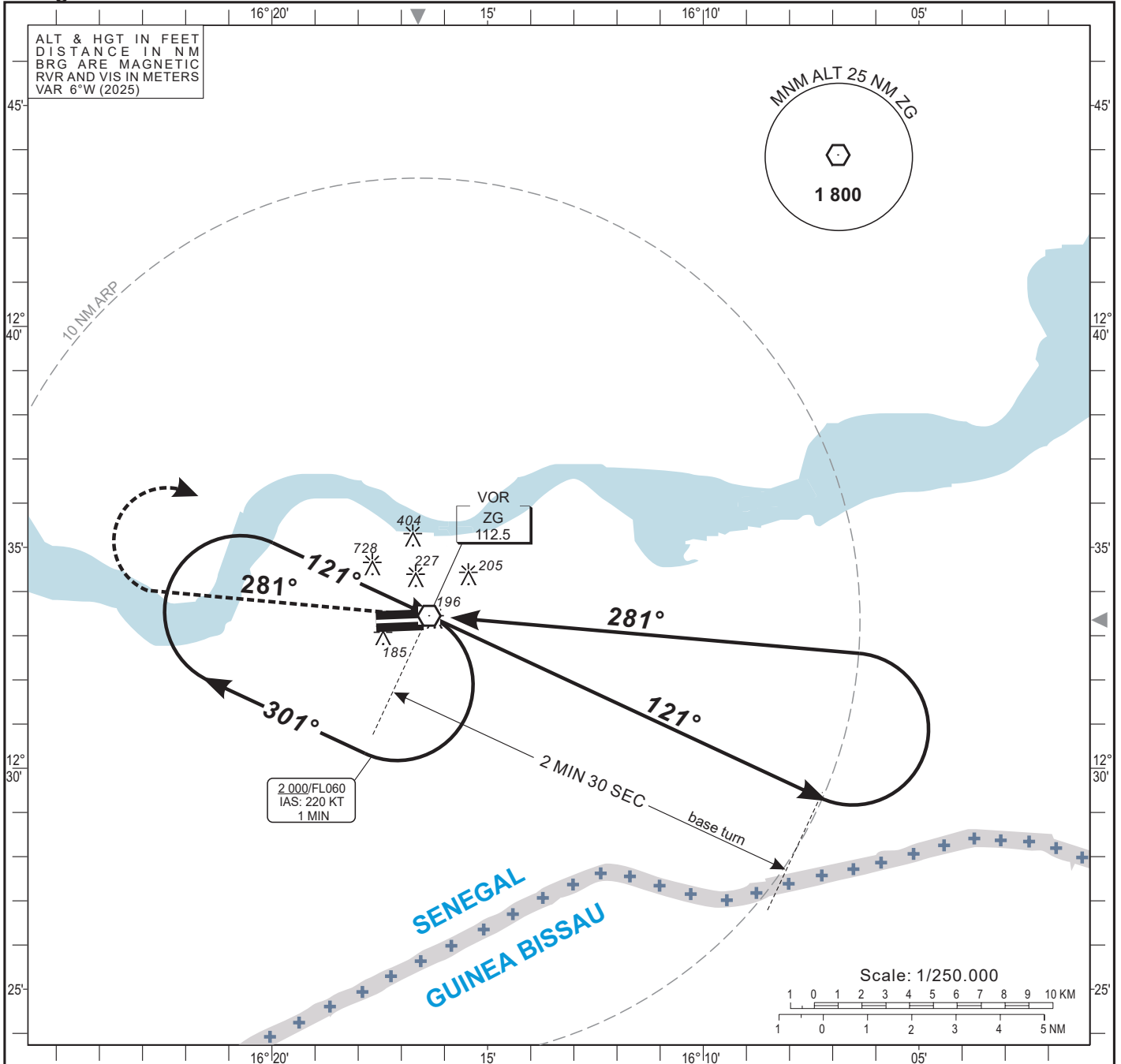
INSTRUMENT APPROACH CHART
Categories **A-B-C**

AERODROME ELEV: 79
THR RWY 27 ELEV: 79
HEIGHTS RELATED TO AERODROME ELEV

TWR : 118.7

ZIGUINCHOR (GOGG)

VOR RWY 27



CAT	VOR			CIRCLING 1				Timing			
	OCA (OCH)	MDA MDH	RVR	OCA (OCH)	MDA MDH	VIS	KT	MIN SEC	KT	MIN SEC	
A	759 (680)	760 (680)	3100	1024 (945)	1030 (950)	3500					
B	759 (680)	760 (680)	3100	1024 (945)	1030 (950)	3500					
C	759 (680)	760 (680)	3100	1122 (1043)	1130 (1050)	3500					
D	-	-	-	-	-	-	90	140			
Notes: 1 Daytime only							100	150			
							110	160			
							120	170			
							130	180			