

Phone : +(221) 76.026.88.15

+(221) 33.957.49.37

Fax : +(221) 33.820.06.00

AFTN : GOOOYNYX

E-mail : [aim-gooo@asecna.org](mailto:aim-gooo@asecna.org)

Web : [www.ais-asecna.org](http://www.ais-asecna.org)



**AIRAC AIP SUP**  
**N° 93/A/24GO**  
**OCTOBER 9<sup>th</sup>, 2024**

**BUREAU NOTAM INTERNATIONAL DE L'OUEST AFRICAIN**

B.P. 8155 Aéroport International Blaise DIAGNE Dakar/Diass – SENEGAL

**BENIN – BURKINA FASO – COTE D'IVOIRE – GUINEE BISSAU – MALI – MAURITANIE – NIGER – SENEGAL – TOGO**

**MISE A JOUR D'UNE PROCEDURE DE VOL DE DIASS**  
**DIASS FLIGHT PROCEDURE UPDATE**

**GOBD**

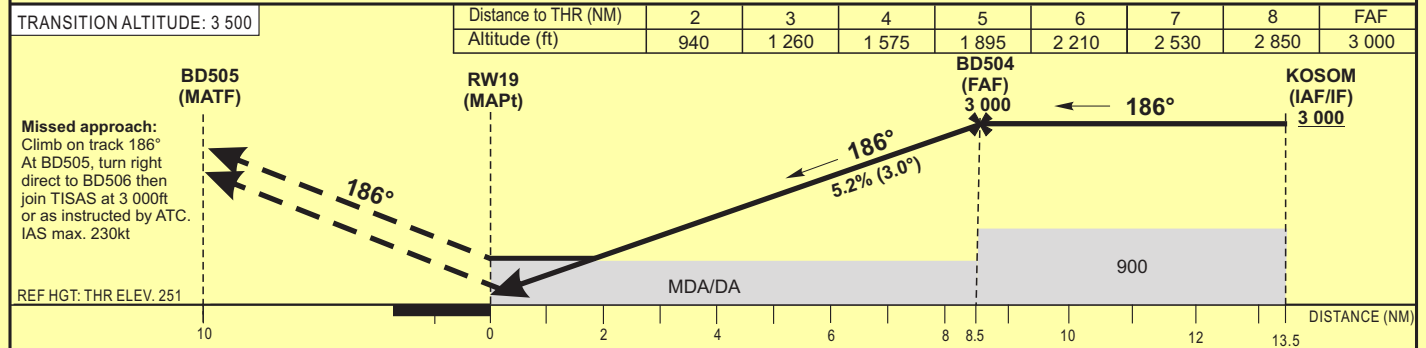
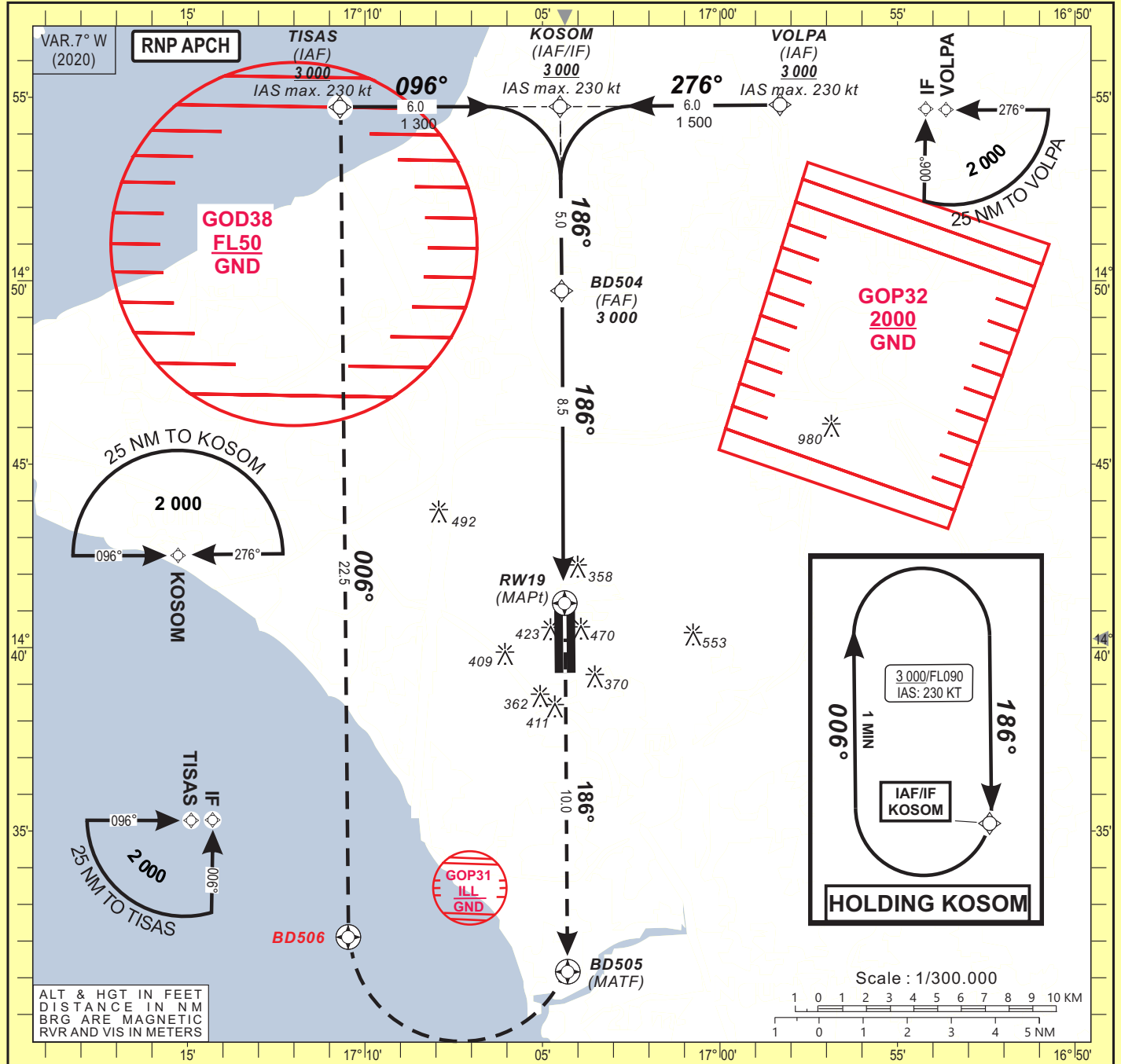
<b>DATE D'ENTREE EN VIGUEUR / EFFECTIVE DATE</b>	<b>31 OCTOBRE 2024 / OCTOBER 31 2024</b>
<b>VALIDITE / VALIDITY</b>	<b>PERM</b>

**MODIFIER AIP ASECNA 13AD2-GOBD-IAC-RNP19 / MODIFY ASECNA AIP 13AD2-GOBD-IAC-RNP19**

**INSTRUMENT APPROACH CHART**  
Categories A-B-C-D

ELEV : 290 DIASS APP : 120.5  
THR : 251 DIASS TWR : 118.8  
HEIGHT RELATED TO THR RWY 19 ELEVATION

**Blaise DIAGNE / Intl (GOBD)**  
RNP RWY 19



CAT	LNAV/VNAV				LNAV				Circling			RVR for take-off : CAT. A - B - C - D : 400				
	OCA (OCH)	DA	DH	RVR 1	RVR 2	OCA (OCH)	MDA	MDH	RVR 1	RVR 2	OCA (OCH)	MDA	MDH	VIS	Timing	FAF / THR
A	501 (250)	510 (250)	700	1000	620 (369)	620 (370)	1200	1500	766 (476)	770 (480)	1500					
B	502 (251)	510 (260)	800	1200	620 (369)	620 (370)	1300	1500	782 (492)	790 (500)	1600					
C	515 (264)	520 (270)	800	1200	620 (369)	620 (370)	1400	1800	887 (597)	890 (600)	2400					
D	542 (291)	550 (300)	800	1200	620 (369)	620 (370)	1600	2000	979 (689)	980 (690)	3600					

**Notes:**

- With approach lights
- Without approach lights
- Daytime only. OCH and MDH AAL

- Minimum temperature : 10° C  
- RDH : 15 m

**INSTRUMENT  
APPROACH CHART**  
 Categories A-B-C-D

ELEV : 290

APP : 120.5

THR : 251

TWR : 118.8

 Blaise DIAGNE / Intl (GOBD)  
 RNP RWY 19

HEIGHT RELATED TO THR RWY 19 ELEVATION

**TABULAR DESCRIPTION**

Serial Number	Path Descriptor	Waypoint Identifier	Fly-Over	Course °M(°T)	Magnetic Variation	Distance (NM)	Turn Direction	Altitude (ft)	Speed limit (Kt)	VPA/TCH (°/m)	Navigation Specification
010	IF	TISAS	—	—	—	—	—	+3000	-230	—	RNP APCH
020	TF	KOSOM	—	096(089.4)	—	6.0	—	+3000	-230	—	RNP APCH
010	IF	VOLPA	—	—	—	—	—	+3000	-230	—	RNP APCH
020	TF	KOSOM	—	276(269.4)	—	6.0	—	+3000	-230	—	RNP APCH
010	IF	KOSOM	—	—	—	—	—	+3000	-230	—	RNP APCH
020	TF	BD504	—	186(179.4)	—	5.0	—	@3000	—	—	RNP APCH
030	TF	RW19	Y	186(179.4)	—	8.5	—	@301	—	3.0/15	RNP APCH
010	IF	RW19	—	—	—	—	—	—	—	—	RNP APCH
020	CF	BD505	Y	186(179.4)	+7.0	10.0	—	—	-230	—	RNP APCH
030	DF	BD506	Y	—	—	—	R	—	-230	—	RNP APCH
040	TF	TISAS	—	006(359.4)	—	22.5	—	+3000	-230	—	RNP APCH
010	IF	KOSOM	—	—	—	—	—	+3000	-230	—	RNP APCH
020	HM	KOSOM	—	186(179.4)	—	—	R	+3000	-230	—	RNP APCH

**WAYPOINTS LIST**

Waypoint Identifier	Coordinates	
KOSOM	14°54'44.630"N	017°04'30.343"W
TISAS	14°54'41.232"N	017°10'42.123"W
VOLPA	14°54'47.859"N	016°58'18.560"W
BD504	14°49'43.361"N	017°04'27.504"W
BD505	14°31'09.957"N	017°04'17.032"W
BD506	14°32'06.697"N	017°10'28.016"W
RW19	14°41'12.508"N	017°04'22.696"W