

Phone : +(221) 76.026.88.15
 +(221) 33.957.49.37
Fax : +(221) 33.820.06.00
AFTN : GOOYNYX
E-mail : aim-gooo@asecna.org
Web : <https://ais.asecna.aero>



AIRAC AIP SUP
NR 74/A/24GO
AUGUST 05, 2024

BUREAU NOTAM INTERNATIONAL DE L'OUEST AFRICAIN

B.P. 8155 Aéroport International Blaise DIAGNE Dakar/Diass-SENEGAL

BENIN – BURKINA FASO – COTE D'IVOIRE – GUINEE BISSAU – MALI – MAURITANIE – NIGER – SENEGAL – TOGO

MISE EN ŒUVRE DES PROCEDURES DE VOL REVISEES DE BISSAU

IMPLEMENTATION OF BISSAU REVISED FLIGHT PROCEDURES

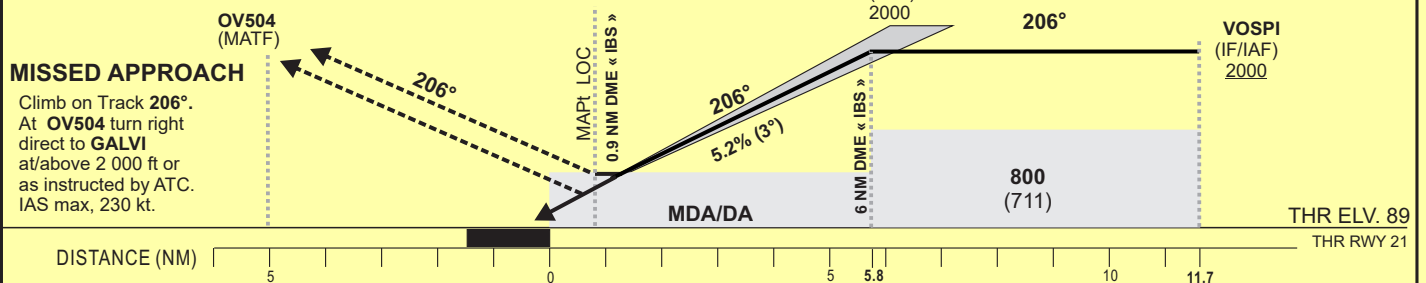
GGOV
/
GUINEE BISSAU

Mise en vigueur/Effective Date	03 Octobre 2024, <i>October 03 2024</i>
Validité/Validity	Perm



Distance to ILS DME « IBS »(NM)	RW21	2	3	4	5	FAF
Altitude (ft)		715	1030	1350	1670	2000

TRANSITION ALTITUDE : 3 200



NEW EDITION	CAT	CAT. I			LOC-DME			Circling (*)				Timing FAF / THR 5.8 NM		
		OCA (OCH)	DA	DH	RVR	OCA (OCH)	MDA	MDH	RVR	OCA (OCH)	MDA		MDH	VIS
A		315 (226)	320 (230)		550	585 (496)			1500	634 (506)	640 (510)		1500	
B		324 (235)	330 (240)		550	585 (496)			1500	763 (635)	770 (640)		1600	
C		334 (245)	340 (250)		550	585 (496)			1500	862 (734)	870 (740)		2400	
D		344 (255)	350 (260)		600	585 (496)			1500	862 (734)	870 (740)		3600	

Notes : (*) Daytime only. OCH and MDH AAL

RDH: 15 m

KT	MIN	SEC	KT	MIN	SEC
90	3	Min 52	140	2	Min 29
100	3	Min 29	150	2	Min 19
110	3	Min 10	160	2	Min 10
120	2	Min 54	170	2	Min 03
130	2	Min 41	180	1	Min 56

TABULAR DESCRIPTION

ILSY or LOCY RWY 21

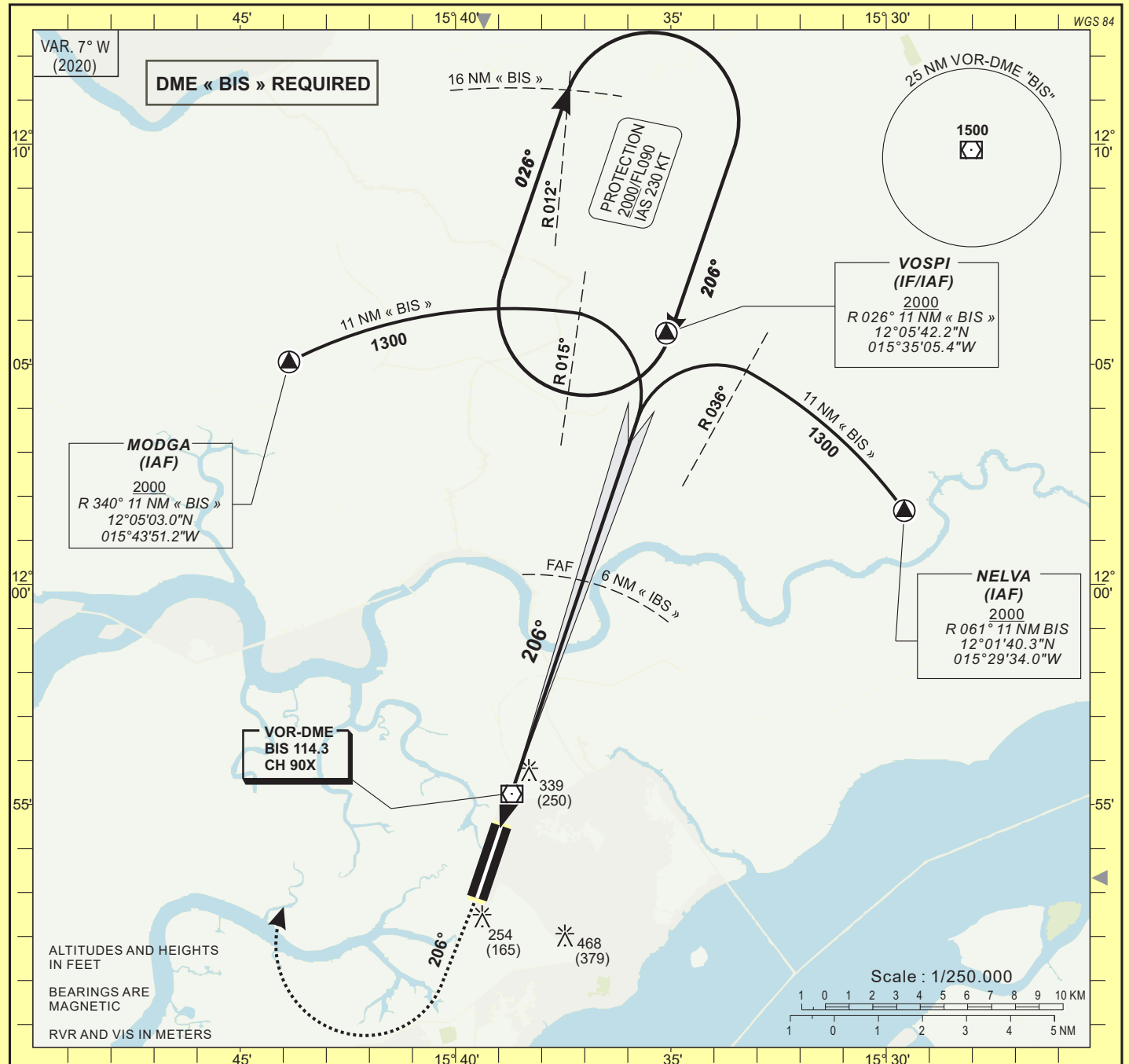
Serial Number	Path Descriptor	Waypoint Identifier	Fly-Over	Course °M(°T)	Magnetic Variation	Distance (NM)	Turn Direction	Altitude (ft)	Speed limit (Kt)	VPA/TCH (°/m)	Navigation Specification
10	IF	GALVI	-	-	-	-	-	+2000	-230	-	RNP APCH
20	TF	VOSPI	-	116(108.7)	-	6.0	-	+2000	-230	-	RNP APCH
10	IF	TIXIM	-	-	-	-	-	+2000	-230	-	RNP APCH
20	TF	VOSPI	-	296(288.7)	-	6.0	-	+2000	-230	-	RNP APCH
10	IF	VOSPI	-	-	-	-	-	+2000	-230	-	RNP APCH
20	TF	OV503	-	206(198.7)	-	5.9	-	@2000	-	-	N/A
30	TF	RW21	Y	206(198.7)	+7	5.8	-	@139	-	-3.0/15	N/A
40	CF	OV504	Y	206(198.7)	-	5.0	-	-	-230	-	RNP APCH
50	DF	GALVI	-	-	-	-	R	+2000	-230	-	RNP APCH
10	IF	VOSPI	-	-	-	-	-	+2000	-230	-	RNP APCH
20	HM	VOSPI	Y	206(198.7)	-	-	R	+2000	-230	-	RNP APCH

WAYPOINTS LIST

ILSY or LOCY RWY 21

Waypoint Identifier	Coordinates	
OV503	12°00'04.604"N	015°37'01.653"W
OV504	11°49'45.255"N	015°40'34.273"W
GALVI	12°07'38.120"N	015°40'53.725"W
VOSPI	12°05'42.238"N	015°35'05.441"W
TIXIM	12°03'46.343"N	015°29'17.568"W
RW21	11°54'30.741"N	015°38'56.302"W

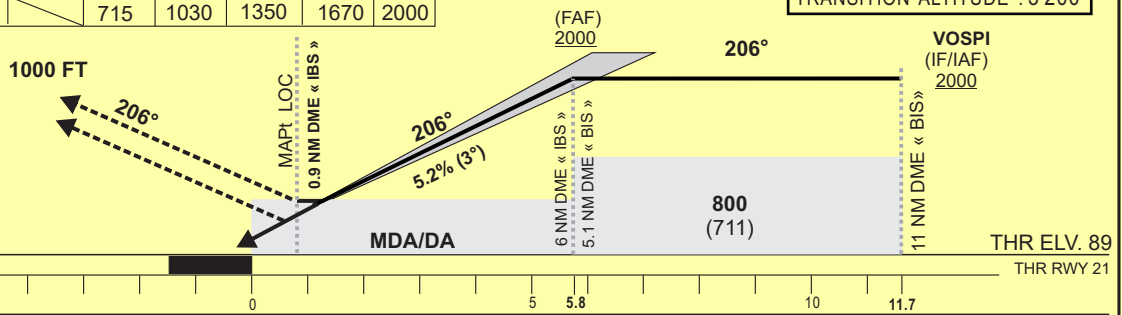
AMDT : NEW EDITION



Distance to ILS DME « IBS »(NM)	RW21	2	3	4	5	FAF
Altitude (ft)		715	1030	1350	1670	2000

TRANSITION ALTITUDE : 3 200

MISSED APPROACH
Climb up to 1000 ft on R 206.
Turn right climbing to 2000 ft,
join VOSPI via R 012 or as
instructed by ATC.
Do not turn before MAPt.



DISTANCE (NM)	5	0	5	5.8	10	11.7
---------------	---	---	---	-----	----	------

NEW EDITION
AMDT

CAT	CAT. I				LOC-DME				Circling (*)				Timing FAF / THR 5.8 NM			
	OCA (OCH)	DA	DH	RVR	OCA (OCH)	MDA	MDH	RVR	OCA (OCH)	MDA	MDH	VIS				
A	315 (226)	320 (230)	550	585 (496)	590 (500)	1500	634 (506)	640 (510)	1500				90	3 Min 52	140	2 Min 29
B	324 (235)	330 (240)	550	585 (496)	590 (500)	1500	763 (635)	770 (640)	1600				100	3 Min 29	150	2 Min 19
C	334 (245)	340 (250)	550	585 (496)	590 (500)	1500	862 (734)	870 (740)	2400				110	3 Min 10	160	2 Min 10
D	344 (255)	350 (260)	600	585 (496)	590 (500)	1500	862 (734)	870 (740)	3600				120	2 Min 54	170	2 Min 03
													130	2 Min 41	180	1 Min 56

Notes : (*) Daytime only. OCH and MDH AAL

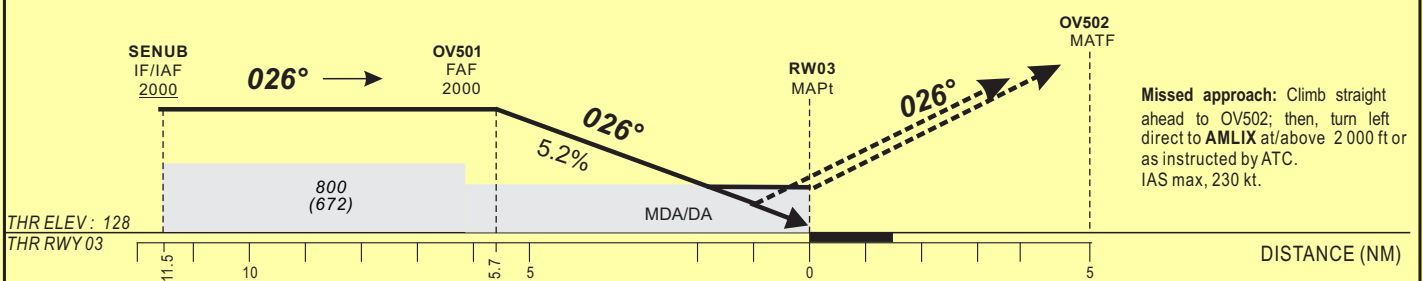
RDH: 15 m

HEIGHTS RELATED TO THR RWY 03 ELEVATION



Distance to THR 03 (NM)	FAF	5	4	3	2	RWY 03
Altitude (ft)	2000	1770	1460	1135	820	

TRANSITION ALTITUDE : 3 200



Missed approach: Climb straight ahead to OV502; then, turn left direct to AMLIX at/above 2 000 ft or as instructed by ATC. IAS max, 230 kt.

NEW EDITION
AMDT

CAT	LNAV/VNAV			LNAV			Circling (*)				Timing	
	OCA (OCH)	DA	DH	RVR	OCA (OCH)	MDA	MDH	RVR	OCA (OCH)	MDA		MDH
A	384 (256)	390 (260)	600	600	520 (392)	520 (400)	520 (400)	1100	634 (506)	640 (510)	1500	
B	396 (268)	400 (270)	600	600	520 (392)	520 (400)	520 (400)	1100	763 (635)	770 (640)	1600	
C	407 (279)	410 (280)	600	600	520 (392)	520 (400)	520 (400)	1100	862 (734)	870 (740)	2400	
D	434 (306)	440 (310)	700	700	520 (392)	520 (400)	520 (400)	1100	862 (734)	870 (740)	3600	

Notes : (*) Daytime only. OCH and MDH AAL

RDH: 15 m

TABULAR DESCRIPTION

RNP RWY 03

Serial Number	Path Descriptor	Waypoint Identifier	Fly-Over	Course °M(°T)	Magnetic Variation	Distance (NM)	Turn Direction	Altitude (ft)	Speed limit (Kt)	VPA/TCH (°/m)	Navigation Specification
10	IF	AMLIX	-	-	-	-	-	+2000	-230	-	RNP APCH
20	TF	SENUB	-	116(108.6)	-	6.0	-	+2000	-230	-	RNP APCH
10	IF	ERMUD	-	-	-	-	-	+2000	-230	-	RNP APCH
20	TF	SENUB	-	296(288.6)	-	6.0	-	+2000	-230	-	RNP APCH
10	IF	SENUB	-	-	-	-	-	+2000	-230	-	RNP APCH
20	TF	OV501	-	26(18.7)	-	5.8	-	@2000	-	-	RNP APCH
30	TF	RW03	Y	26(18.7)	+7	5.7	-	@178	-	-3.0/15	RNP APCH
40	CF	OV502	Y	26(18.7)	-	5.0	-	-	-230	-	RNP APCH
50	DF	AMLIX	-	-	-	-	L	+2000	-230	-	RNP APCH
10	IF	SENUB	-	-	-	-	-	+2000	-230	-	RNP APCH
20	HM	SENUB	Y	26(18.7)	-	-	R	+2000	-230	-	RNP APCH

WAYPOINTS LIST

RNP RWY 03

Waypoint Identifier	Coordinates	
OV501	11°47'25.425"N	015°41'22.237"W
OV502	11°57'37.743"N	15°37'52.095"W
AMLIX	11°43'50.549"N	015°49'03.232"W
SENUB	11°41'55.006"N	015°43'15.927"W
ERMUD	11°39'59.101"N	015°37'27.968"W
RW03	11°52'52.265"N	015°39'30.103"W

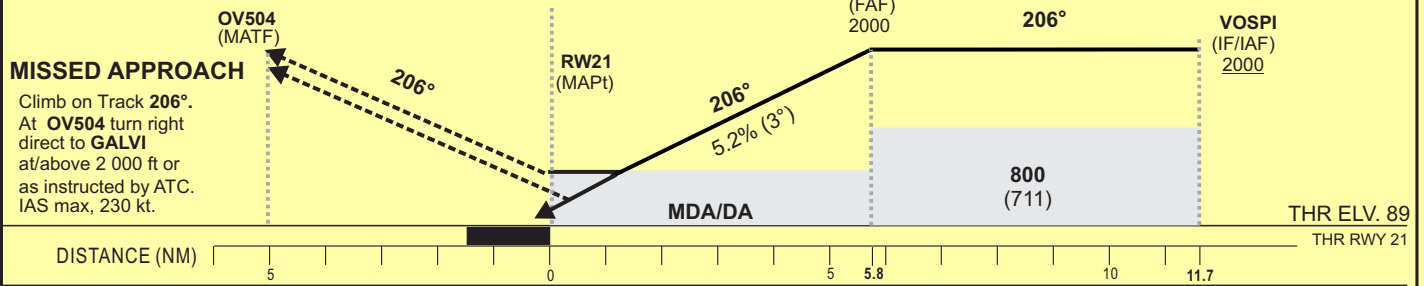
AMDT : NEW EDITION

HEIGHTS RELATED TO THR RWY 21 ELEVATION



Distance to RWY21 (NM)	RWY21	2	3	4	5	FAF
Altitude (ft)		775	1095	1415	1730	2000

TRANSITION ALTITUDE : 3 200



DISTANCE (NM)	5	0	5	5.8	10	11.7
---------------	---	---	---	-----	----	------

NEW EDITION	CAT	LNAV/VNAV			LNAV			Circling (*)				Timing FAF / THR 5.8 NM						
		OCA (OCH)	DA	DH	RVR	OCA (OCH)	MDA	MDH	RVR	OCA (OCH)	MDA		MDH	VIS				
A		469 (380)	470 (380)		1000	585 (496)	590 (500)	1500	634 (506)	640 (510)		1500	90	3	Min 52	140	2	Min 29
B		481 (392)	490 (400)		1100	585 (496)	590 (500)	1500	763 (635)	770 (640)		1600	100	3	Min 29	150	2	Min 19
C		489 (400)	490 (400)		1100	585 (496)	590 (500)	1500	862 (734)	870 (740)		2400	110	3	Min 10	160	2	Min 10
D		500 (411)	500 (420)		1200	585 (496)	590 (500)	1500	862 (734)	870 (740)		3600	120	2	Min 54	170	2	Min 03
		Notes : (*) Daytime only. OCH and MDH AAL																

RDH: 15 m

TABULAR DESCRIPTION

RNP RWY 21

Serial Number	Path Descriptor	Waypoint Identifier	Fly-Over	Course °M(°T)	Magnetic Variation	Distance (NM)	Turn Direction	Altitude (ft)	Speed limit (Kt)	VPA/TCH (°/m)	Navigation Specification
10	IF	GALVI	-	-	-	-	-	+2000	-230	-	RNP APCH
20	TF	VOSPI	-	116(108.7)	-	6.0	-	+2000	-230	-	RNP APCH
10	IF	TIXIM	-	-	-	-	-	+2000	-230	-	RNP APCH
20	TF	VOSPI	-	296(288.7)	-	6.0	-	+2000	-230	-	RNP APCH
10	IF	VOSPI	-	-	-	-	-	+2000	-230	-	RNP APCH
20	TF	OV503	-	206(198.7)	-	5.9	-	@2000	-	-	RNP APCH
30	TF	RW21	Y	206(198.7)	+7	5.8	-	@139	-	-3.0/15	RNP APCH
40	CF	OV504	Y	206(198.7)	-	5.0	-	-	-230	-	RNP APCH
50	DF	GALVI	-	-	-	-	R	+2000	-230	-	RNP APCH
10	IF	VOSPI	-	-	-	-	-	+2000	-230	-	RNP APCH
20	HM	VOSPI	Y	206(198.7)	-	-	R	+2000	-230	-	RNP APCH

WAYPOINTS LIST

RNP RWY 21

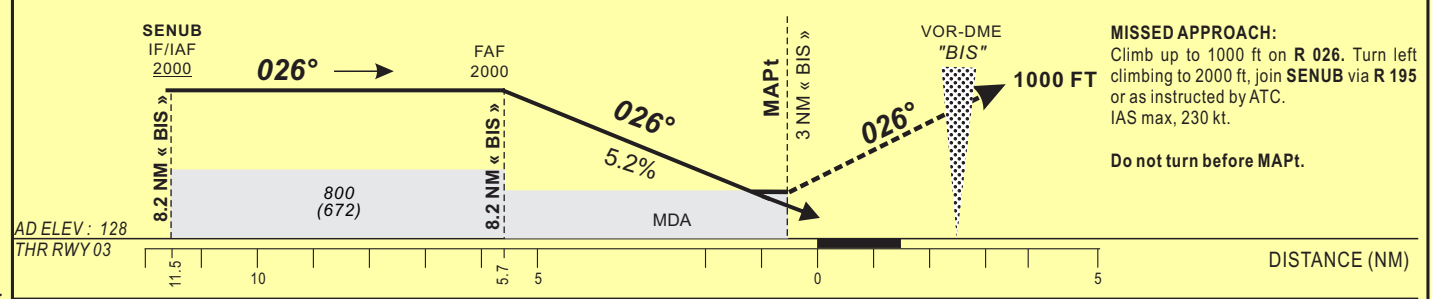
Waypoint Identifier	Coordinates	
OV503	12°00'04.604"N	015°37'01.653"W
OV504	11°49'45.255"N	015°40'34.273"W
GALVI	12°07'38.120"N	015°40'53.725"W
VOSPI	12°05'42.238"N	015°35'05.441"W
TIXIM	12°03'46.343"N	015°29'17.568"W
RW21	11°54'30.741"N	015°38'56.302"W

AMDT : NEW EDITION

HEIGHTS RELATED TO AERODROME ELEVATION



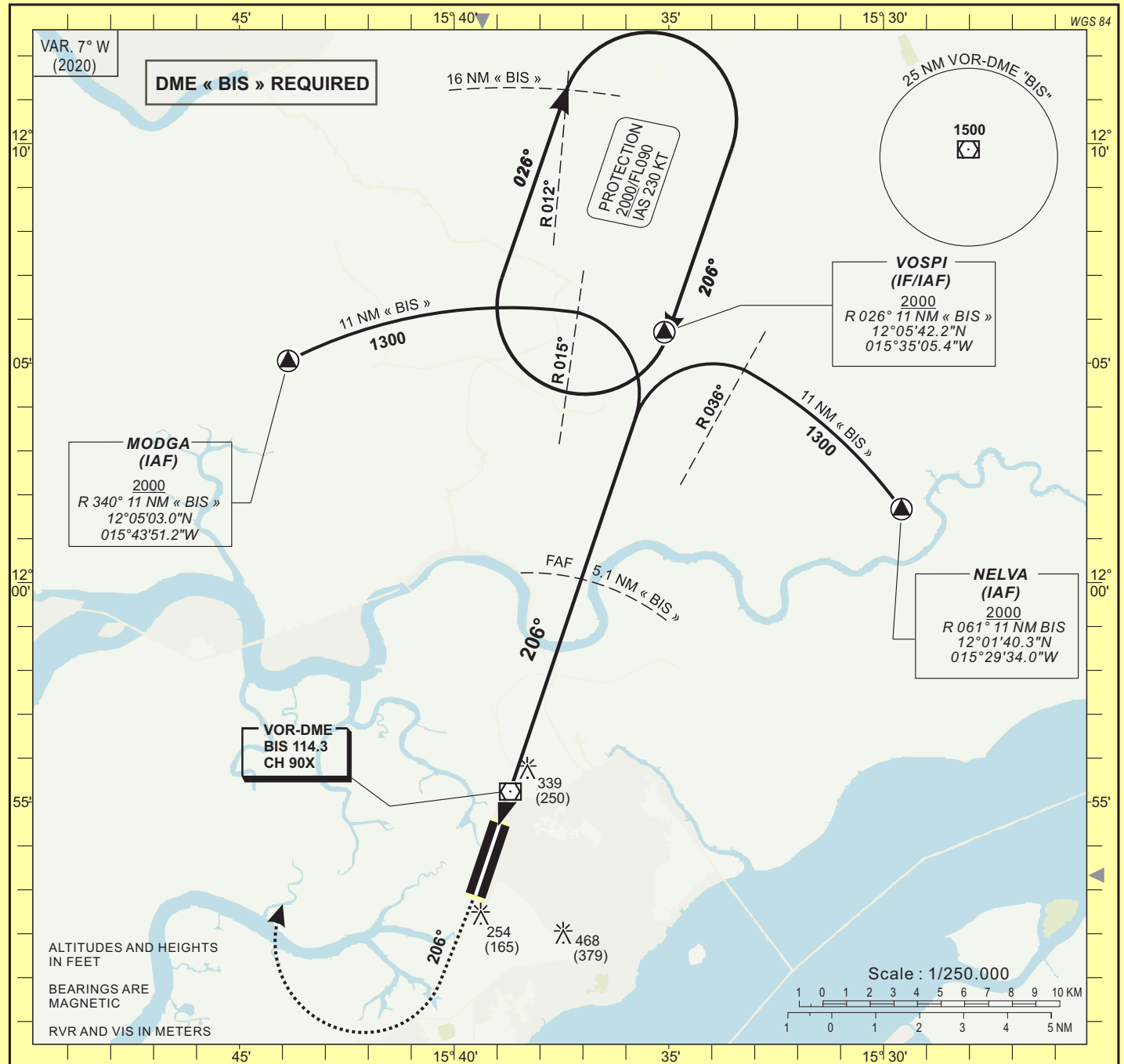
Distance to DME « BIS » (NM)	FAF	8	7	6	5	4	RWY 03
Altitude (ft)	2000	1930	1610	1295	975	655	



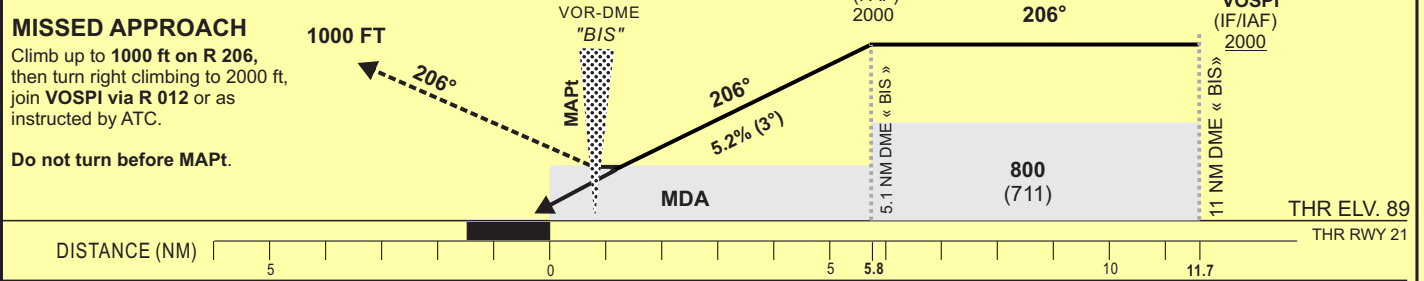
NEW EDITION	CAT	VOR-DME			Circling (*)				Timing	FAF / THR		
		OCA (OCH)	MDA	MDH	RVR	OCA (OCH)	MDA	MDH		VIS	KT	MIN SEC
A	500 (372)	500 (380)	1000	634 (506)	640 (510)	1500			90	3 Min 48	140	2 Min 27
B	500 (372)	500 (380)	1000	763 (635)	770 (640)	1600			100	3 Min 25	150	2 Min 17
C	500 (372)	500 (380)	1000	862 (734)	870 (740)	2400			110	3 Min 07	160	2 Min 08
D	500 (372)	500 (380)	1000	862 (734)	870 (740)	3600			120	2 Min 51	170	2 Min 01
									130	2 Min 38	180	1 Min 54

Notes : (*) Daytime only. OCH and MDH AAL
RDH: 15 m

HEIGHTS RELATED TO THR RWY 21 ELEVATION



Distance to DME « BIS » (NM)	RW21	1	2	3	4	5	FAF	TRANSITION ALTITUDE : 3 200
Altitude (ft)		680	1000	1320	1635	1955	2000	



NEW EDITION	CAT	VOR-DME			Circling (*)				Timing	FAF / THR		
		OCA (OCH)	MDA	MDH	RVR	OCA (OCH)	MDA	MDH		VIS	KT	MIN SEC
A	585 (496)	590 (500)	1500	634 (506)	640 (510)	1500			90	3 Min 52	140	2 Min 29
B	585 (496)	590 (500)	1500	763 (635)	770 (640)	1600			100	3 Min 29	150	2 Min 19
C	585 (496)	590 (500)	1500	862 (734)	870 (740)	2400			110	3 Min 10	160	2 Min 10
D	585 (496)	590 (500)	1500	862 (734)	870 (740)	3600			120	2 Min 54	170	2 Min 03
									130	2 Min 41	180	1 Min 56

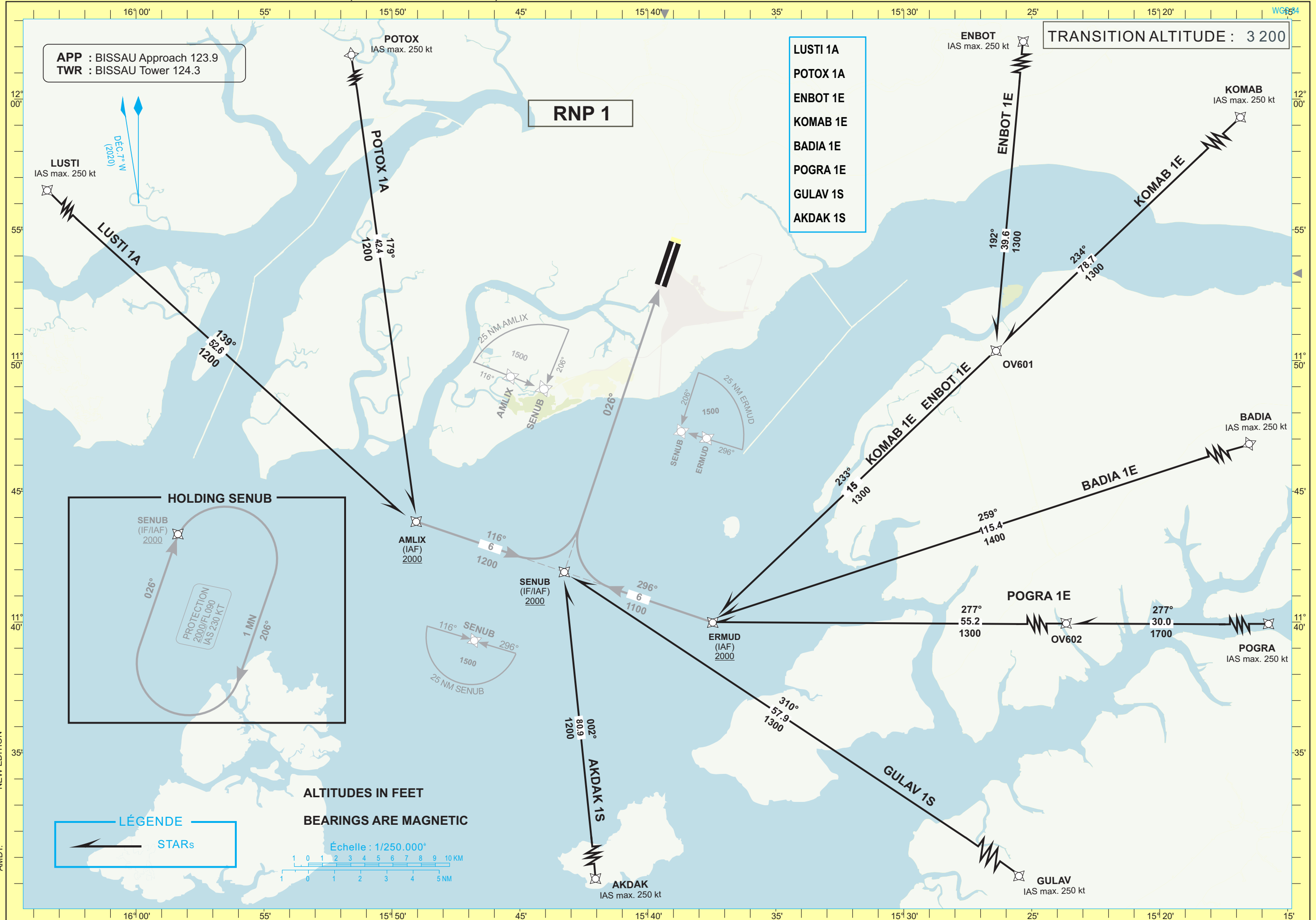
Notes : (*) Daytime only. OCH and MDH AAL

RDH: 15 m



STANDARD ARRIVAL CHART-INSTRUMENTS (STAR RNP RWY 03)-ICAO

BISSAU/Osvaldo Vieira-(GGOV)





TABULAR DESCRIPTION

STAR RNP RWY 03

Serial Number	Path Descriptor	Waypoint Identifier	Fly-Over	Course °M(°T)	Magnetic Variation	Distance (NM)	Turn Direction	Altitude (ft)	Speed limit (Kt)	VPA/TCH (°/m)	Navigation Specification
LUSTI 1A											
10	IF	LUSTI	-	-		-	-	+2000	-250	-	RNP 1
20	TF	AMLIX	-	139(131.8)		52.6	-	+2000	-230	-	RNP 1
POTOX 1A											
10	IF	POTOX	-			-	-	+2000	-250	-	RNP 1
20	TF	AMLIX	-	179(172.2)		42.4	-	+2000	-230	-	RNP 1
ENBOT 1E											
10	IF	ENBOT	-	-		-	-	+2000	-250	-	RNP 1
20	TF	OV601	-	192(184.9)		39.6	-	+2000	-250	-	RNP 1
30	TF	ERMUD	-	233(226.4)		15	-	+2000	-230	-	RNP 1
KOMAB 1E											
10	IF	KOMAB	-	-		-	-	+2000	-250	-	RNP 1
20	TF	OV601	-	234(226.6)		78.7	-	+2000	-250	-	RNP 1
30	TF	ERMUD	-	233(226.4)		15	-	+2000	-230	-	RNP 1
BADIA 1E											
10	IF	BADIA	-	-		-	-	+2000	-250	-	RNP 1
20	TF	ERMUD	-	259(252.1)		115.4	-	+2000	-230	-	RNP 1
POGRA 1E											
10	IF	POGRA	-	-		-	-	+2000	-250	-	RNP 1
20	TF	OV602	-	277(270.1)		30	-	+2000	-250	-	RNP 1
30	TF	ERMUD	-	277(270.0)		55.2	-	+2000	-230	-	RNP 1
GULAV 1S											
10	IF	GULAV	-	-		-	-	+2000	-250	-	RNP 1
20	TF	SENUB	-	310(303.4)		57.9	-	+2000	-230	-	RNP 1
AKDAK 1S											
10	IF	AKDAK	-	-		-	-	+2000	-250	-	RNP 1
20	TF	SENUB	-	002(354.9)		80.9	-	+2000	-230	-	RNP 1

WAYPOINTS LIST

STAR RNP RWY 03

Waypoint Identifier	Coordinates	
LUSTI	12°19'05.000"N	016°29'00.000"W
POTOX	12°26'00.000"N	015°54'54.000"W
ENBOT	12°30'00.000"N	015°22'55.490"W
KOMAB	12°44'48.000"N	014°28'02.000"W
BADIA	12°16'00.000"N	013°45'36.000"W
POGRA	11°40'00.000"N	014°10'36.000"W
GULAV	11°10'00.000"N	014°54'00.000"W
AKDAK	10°21'00.000"N	015°36'00.000"W
AMLIX	11°43'50.549"N	015°49'03.232"W
SENUB	11°41'55.006"N	015°43'15.927"W
ERMUD	11°39'59.101"N	015°37'27.968"W
OV601	11°50'22.576"N	015°26'23.555"W
OV602	11°40'02.677"N	014°41'10.427"W

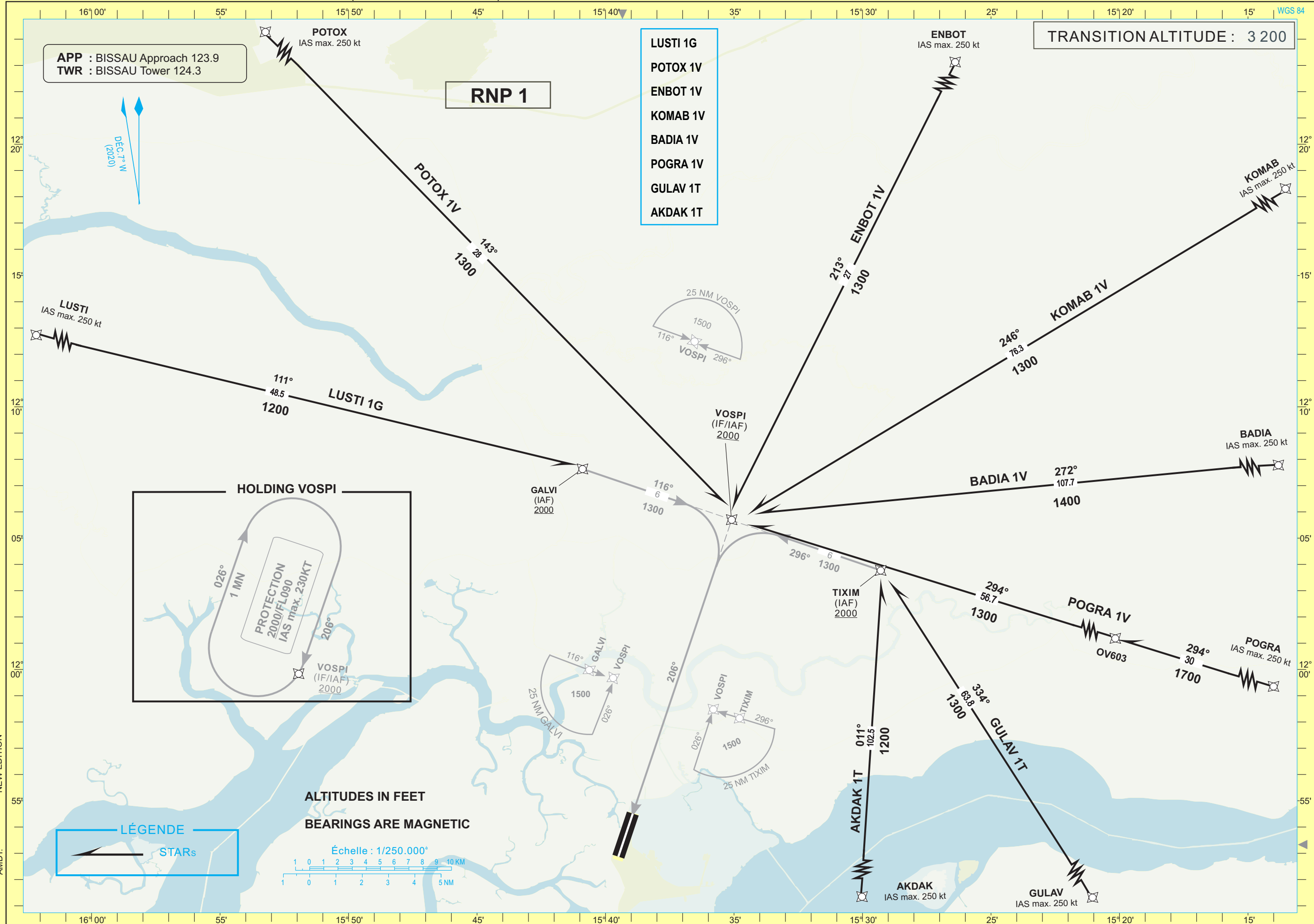
NEW EDITION

AMDT:



STANDARD ARRIVAL CHART-INSTRUMENTS (STAR RNP RWY 21)-ICAO

BISSAU/Osvaldo Vieira-(GGOV)





TABULAR DESCRIPTION											
STAR RNP RWY 21											
Serial Number	Path Descriptor	Waypoint Identifier	Fly-Over	Course °M(°T)	Magnetic Variation	Distance (NM)	Turn Direction	Altitude (ft)	Speed limit (Kt)	VPA/TCH (°/m)	Navigation Specification
LUSTI 1G											
10	IF	LUSTI	-	-		-	-	+2000	-250	-	RNP 1
20	TF	GALVI	-	111(103.5)		48.5	-	+2000	-230	-	RNP 1
POTOX 1V											
10	IF	POTOX	-			-	-	+2000	-250	-	RNP 1
20	TF	VOSPI	-	143(136.1)		28		+2000	-230	-	RNP 1
ENBOT 1V											
10	IF	ENBOT	-	-		-	-	+2000	-250	-	RNP 1
20	TF	VOSPI	-	213(206.2)		27		+2000	230	-	RNP 1
KOMAB 1V											
10	IF	KOMAB	-	-		-	-	+2000	-250	-	RNP 1
20	TF	VOSPI	-	246(239.4)		76.3		+2000	-230	-	RNP 1
BADIA 1V											
10	IF	BADIA	-	-		-	-	+2000	-250	-	RNP 1
20	TF	VOSPI	-	272(264.7)		107.7		+2000	-230	-	RNP 1
POGRA 1V											
10	IF	POGRA	-	-		-	-	+2000	-250	-	RNP 1
20	TF	OV603	-	294(287.3)		30		+2000	-250	-	RNP 1
30	TF	VOSPI	-	294(287.2)		56.7		+2000	-230	-	RNP 1
GULAV 1T											
10	IF	GULAV	-	-		-	-	+2000	-250	-	RNP 1
20	TF	TIXIM	-	334(327.1)		63.8		+2000	-230	-	RNP 1
AKDAK 1T											
10	IF	AKDAK	-	-		-	-	+2000	-250	-	RNP 1
20	TF	TIXIM	-	011(003.7)		102.5		+2000	-230	-	RNP 1

WAYPOINTS LIST		
STAR RNP RWY 21		
Waypoint Identifier	Coordinates	
OV603	11°48'56.490"N	014°39'48.288"W
LUSTI	12°19'05.000"N	016°29'00.000"W
POTOX	12°26'00.000"N	015°54'54.000"W
ENBOT	12°30'00.000"N	015°22'55.490"W
KOMAB	12°44'48.000"N	014°28'02.000"W
BADIA	12°16'00.000"N	013°45'36.000"W
POGRA	11°40'00.000"N	014°10'36.000"W
GULAV	11°10'00.000"N	014°54'00.000"W
AKDAK	10°21'00.000"N	015°36'00.000"W
GALVI	12°07'38.120"N	015°40'53.725"W
VOSPI	12°05'42.238"N	015°35'05.441"W
TIXIM	12°03'46.343"N	015°29'17.568"W

NEW EDITION

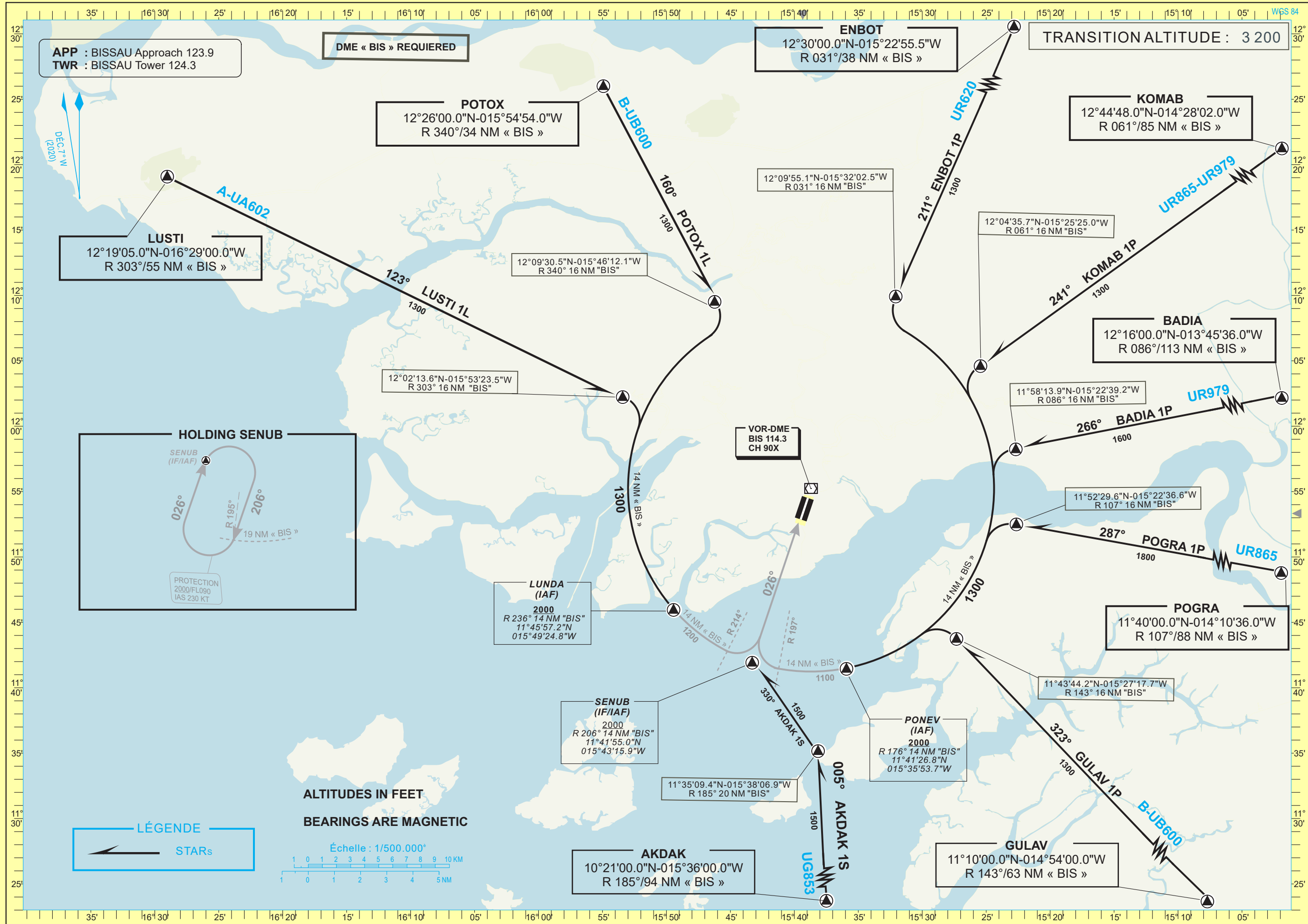
AMDT:



STANDARD ARRIVAL CHART-INSTRUMENTS (STAR VOR-DME RWY 03)-ICAO

BISSAU/Oswaldo Vieira-(GGOV)

RWY03





STANDARD ARRIVAL CHART-INSTRUMENTS (STAR VOR-DME RWY 21)-ICAO

BISSAU/Osvaldo Vieira-(GGOV) RWY 21

