

Phone : +(221) 76.026.88.15
 +(221) 33.957.49.37
Fax : +(221) 33.820.06.00
AFTN : GOOYNYX
E-mail : aim-goo@asecna.org
Web : <https://ais.asecna.aero>



AIRAC AIP SUP
NR 66/A/24GO
JULY 25 , 2024

BUREAU NOTAM INTERNATIONAL DE L'OUEST AFRICAIN

B.P. 8155 Aéroport International Blaise DIAGNE Dakar/Diass-SENEGAL

BENIN – BURKINA FASO – COTE D'IVOIRE – GUINEE BISSAU – MALI – MAURITANIE – NIGER – SENEGAL – TOGO

**MISE EN ŒUVRE DES PROCEDURES DE VOL REVISEES A L'AEROPORT
INTERNATIONAL BLAISE DIAGNE DE DAKAR DIASS**

***IMPLEMENTATION OF REVIEWED FLIGHT PROCEDURES AT BLAISE
DIAGNE INTERNATIONAL AIRPORT***

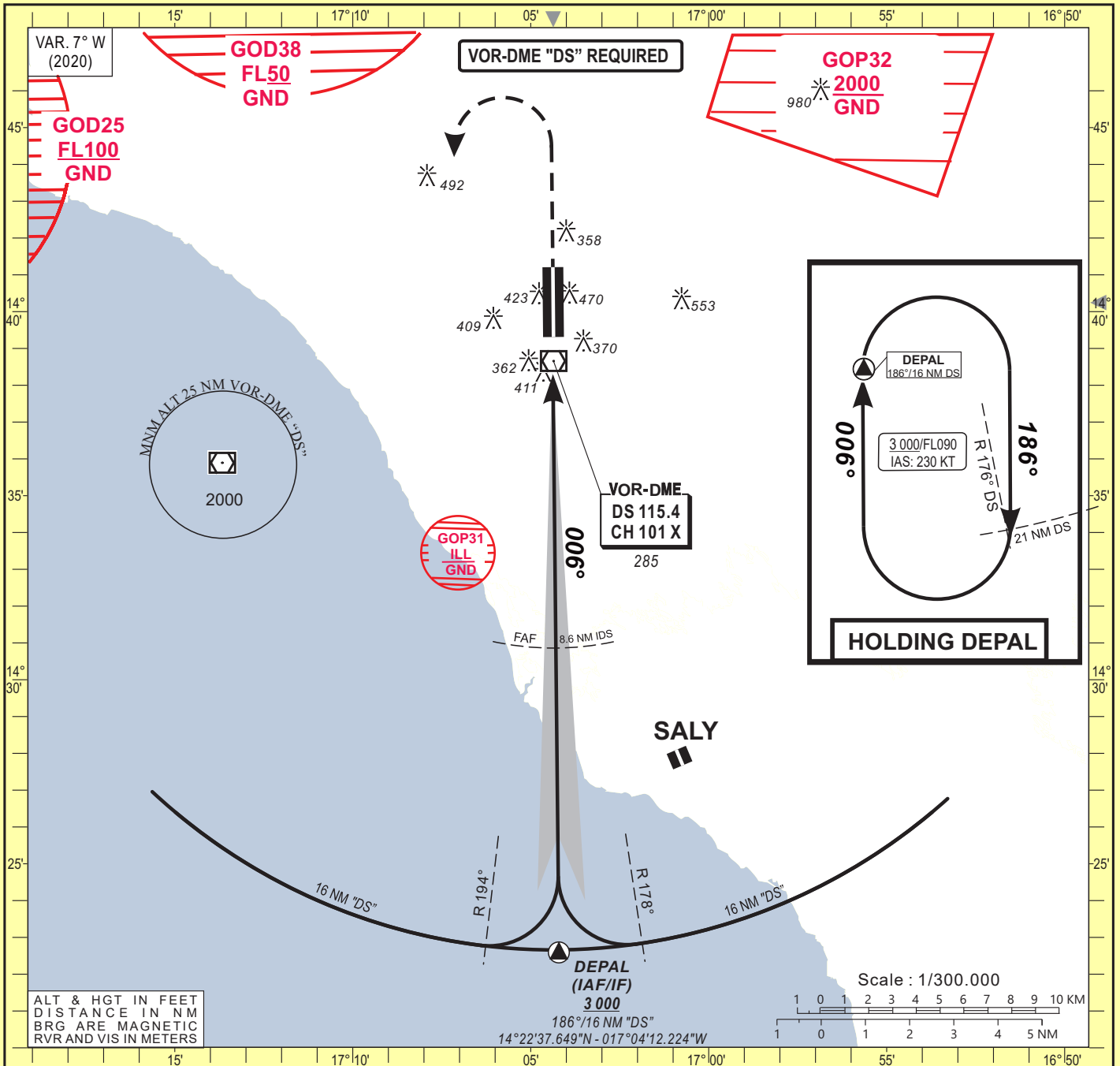
**GOBD
/
SENEGAL**

Mise en vigueur/Effective Date	11 Juillet 2024, July 11, 2024
Validité/Validity	PERM

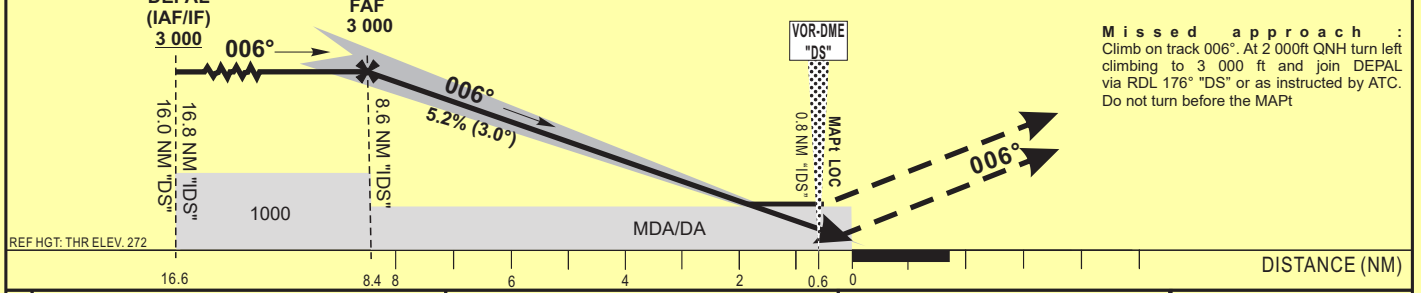
INSTRUMENT APPROACH CHART
Categories A-B-C-D

ELEV : 290 APP : 120.5
THR : 272 TWR : 118.8
HEIGHT RELATED TO THR RWY 01 ELEVATION

Blaise DIAGNE / Intl (GOBD)
ILS Z or LOC Z RWY 01
IDENT ILS "IDS" FREQ 110.1



TRANSITION ALTITUDE: 3 500	Distance to DME-ILS "IDS" (NM)	FAF	8	7	6	5	4	3	2
	Altitude (ft)	3 000	2 805	2 490	2 170	1 850	1 530	1 215	895



CAT	CAT. I				LOC-DME				Circling B				RVR for take-off: CAT. A - B - C - D: 400	
	OCA (OCH)	DA	DH	RVR 1	RVR 2	OCA (OCH)	MDA	MDH	RVR 1	RVR 2	OCA (OCH)	MDA		MDH
A	472 (200)	480 (200)	550	550	1000	627 (355)	630 (360)	900	1500	766 (476)	770 (480)	1500		
B	472 (200)	480 (200)	550	550	1000	627 (355)	630 (360)	1000	1500	782 (492)	790 (500)	1600		
C	479 (207)	480 (210)	600	600	1000	627 (355)	630 (360)	1000	1800	887 (597)	890 (600)	2400		
D	489 (217)	490 (220)	600	600	1000	627 (355)	630 (360)	1400	2000	979 (689)	980 (690)	3600		

Notes: **1** With approach lights
2 Without approach lights
B Daytime only. OCH and MDH AAL

- RDH: 15 m

Timing		FAF / THR 8.4 NM	
KT	MIN SEC	KT	MIN SEC
90	5 Min 36	140	3 Min 36
100	5 Min 02	150	3 Min 22
110	4 Min 35	160	3 Min 09
120	4 Min 12	170	2 Min 58
130	3 Min 53	180	2 Min 48