

Phone : +(221) 76.026.88.15
+(221) 33.957.49.37
Fax : +(221) 33.820.06.00
AFTN : GOOYNYX
E-mail : aim-goo@asecna.org
Web : <https://ais.asecna.aero>



AIRAC AIP SUP
NR 55/A/24GO
JUNE 13 , 2024

BUREAU NOTAM INTERNATIONAL DE L'OUEST AFRICAIN

B.P. 8155 Aéroport International Blaise DIAGNE Dakar/Diass-SENEGAL

BENIN – BURKINA FASO – COTE D'IVOIRE – GUINEE BISSAU – MALI – MAURITANIE – NIGER – SENEGAL – TOGO

**MISE EN ŒUVRE DES PROCEDURES DE VOL CCO/CDO ET DES
PROCEDURES DE VOL REVISEES A L'AEROPORT INTERNATIONAL BLAISE DIAGNE
DE DAKAR DIASS**

**IMPLEMENTATION OF CCO/CDO FLIGHT PROCEDURES AND
REVIEWED FLIGHT PROCEDURES AT BLAISE DIAGNE INTERNATIONAL AIRPORT**

**GOBD
/
SENEGAL**

Mise en vigueur/Effective Date	11 Juillet 2024, July 11, 2024
Validité/Validity	PERM

CE SUPPLEMENT ANNULE ET REMPLACE LE SUPPLEMENT NR 43/A/24GO DU 16 MAI 2024

THIS SUPPLEMENT CANCELS AND REPLACES THE SUPPLEMENT NR 43/A/24GO OF MAY 16th, 2024



STANDARD DEPARTURE CHART
INSTRUMENT (SID)
Categories A-B-C-D

APP 120.5
TWR 118.8

Blaise DIAGNE / Intl (GOBD)
RWY 01

LIGOV 1B, LIMAX 1B, BIKIS 1B, SAKLI 1B, NURAS 1B, ERIDI 1B, BIDAV 1B,

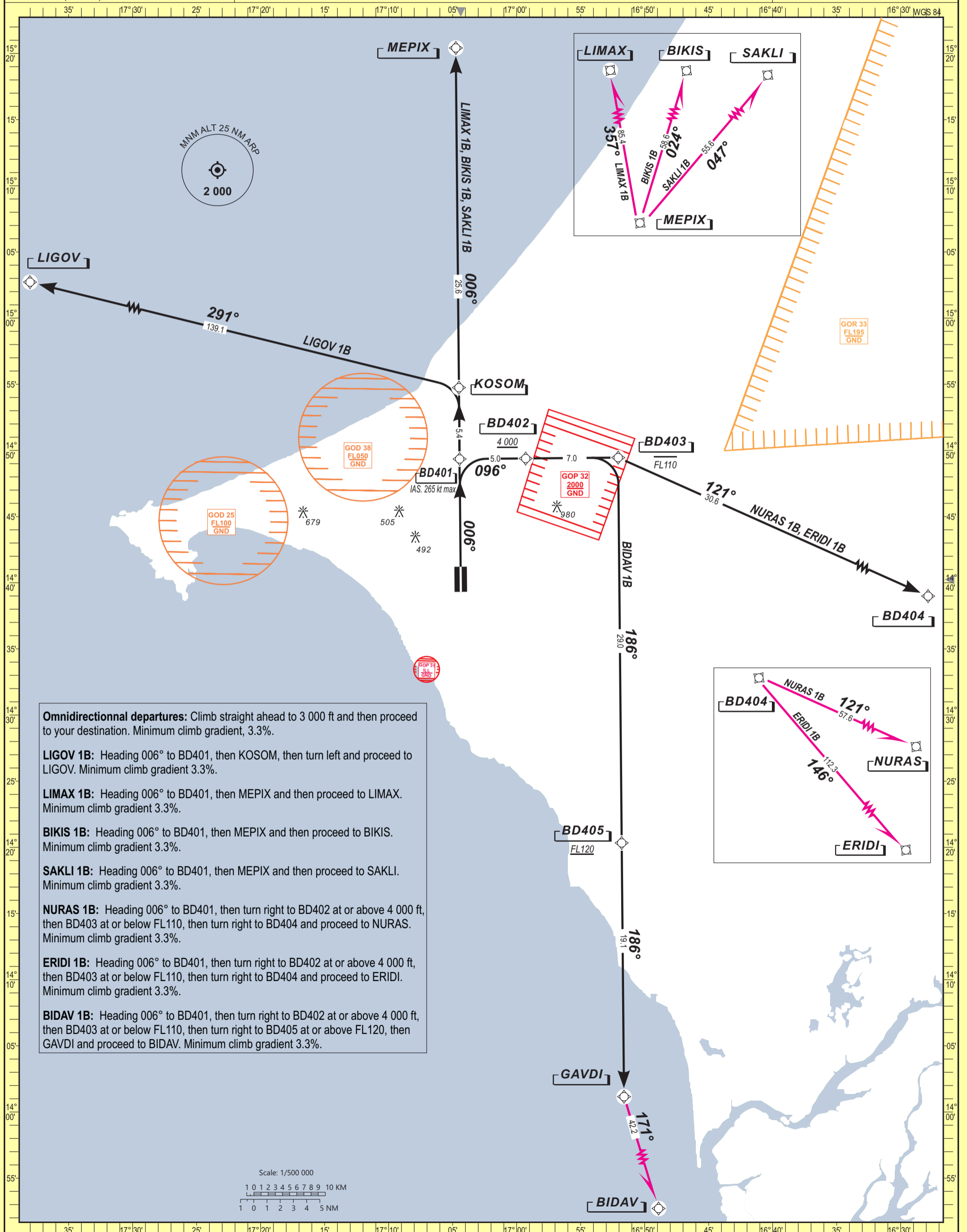
ELEV. & ALT IN FEET
DISTANCE IN NM
BRG ARE MAGNETIC
VAR 7°W(2020)

Notes:

CONTINUOUS CLIMB OPERATIONS (CCO)

TRANSITION ALTITUDE: 3 500

RNP 1



Omnidirectional departures: Climb straight ahead to 3 000 ft and then proceed to your destination. Minimum climb gradient, 3.3%.

LIGOV 1B: Heading 006° to BD401, then KOSOM, then turn left and proceed to LIGOV. Minimum climb gradient 3.3%.

LIMAX 1B: Heading 006° to BD401, then MEPIX and then proceed to LIMAX. Minimum climb gradient 3.3%.

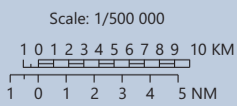
BIKIS 1B: Heading 006° to BD401, then MEPIX and then proceed to BIKIS. Minimum climb gradient 3.3%.

SAKLI 1B: Heading 006° to BD401, then MEPIX and then proceed to SAKLI. Minimum climb gradient 3.3%.

NURAS 1B: Heading 006° to BD401, then turn right to BD402 at or above 4 000 ft, then BD403 at or below FL110, then turn right to BD404 and proceed to NURAS. Minimum climb gradient 3.3%.

ERIDI 1B: Heading 006° to BD401, then turn right to BD402 at or above 4 000 ft, then BD403 at or below FL110, then turn right to BD404 and proceed to ERIDI. Minimum climb gradient 3.3%.

BIDAV 1B: Heading 006° to BD401, then turn right to BD402 at or above 4 000 ft, then BD403 at or below FL110, then turn right to BD405 at or above FL120, then GAVDI and proceed to BIDAV. Minimum climb gradient 3.3%.





TABULAR DESCRIPTION

Serial Number	Path Descriptor	Waypoint Ident.	Fly Over	Course °M (T)	Magnetic Variation	Distance (NM)	Turn Direction	Altitude (ft)	Speed Limit (kt)	NAV. Spec.
LIGOV 1B										
010	CF	BD401	-	006 (359.4)	-	-	-	-	-265	RNP 1
020	TF	KOSOM	-	006 (359.4)	-	5.4	-	-	-	RNP 1
030	TF	LIGOV	-	291 (284.1)	-	139.1	L	-	-	RNP 1
LIMAX 1B										
010	CF	BD401	-	006 (359.4)	-	-	-	-	-265	RNP 1
020	TF	KOSOM	-	006 (359.4)	-	5.4	-	-	-	RNP 1
030	TF	MEPIX	-	006 (359.4)	-	25.6	-	-	-	RNP 1
040	TF	LIMAX	-	357 (350.1)	-	85.4	L	-	-	RNP 1
BIKIS 1B										
010	CF	BD401	-	006 (359.4)	-	-	-	-	-265	RNP 1
020	TF	KOSOM	-	006 (359.4)	-	5.4	-	-	-	RNP 1
030	TF	MEPIX	-	006 (359.4)	-	25.6	-	-	-	RNP 1
040	TF	BIKIS	-	024 (017.0)	-	58.6	R	-	-	RNP 1
SAKLI 1B										
010	CF	BD401	-	006 (359.4)	-	-	-	-	-265	RNP 1
020	TF	KOSOM	-	006 (359.4)	-	5.4	-	-	-	RNP 1
030	TF	MEPIX	-	006 (359.4)	-	25.6	-	-	-	RNP 1
040	TF	SAKLI	-	047 (040.3)	-	55.6	R	-	-	RNP 1
NURAS 1B										
010	CF	BD401	-	006 (359.4)	-	-	-	-	-265	RNP 1
020	TF	BD402	-	096 (089.4)	-	5.0	R	+4000	-	RNP 1
030	TF	BD403	-	096 (089.4)	-	7.0	-	-FL110	-	RNP 1
040	TF	BD404	-	121 (113.9)	-	30.6	R	-	-	RNP 1
050	TF	NURAS	-	121 (113.9)	-	57.6	-	-	-	RNP 1
ERIDI 1B										
010	CF	BD401	-	006 (359.4)	-	-	-	-	-265	RNP 1
020	TF	BD402	-	096 (089.4)	-	5.0	R	+4000	-	RNP 1
030	TF	BD403	-	096 (089.4)	-	7.0	-	-FL110	-	RNP 1
040	TF	BD404	-	121 (113.9)	-	30.6	R	-	-	RNP 1
050	TF	ERIDI	-	146 (139.1)	-	112.3	R	-	-	RNP 1
BIDAV 1B										
010	CF	BD401	-	006 (359.4)	-	-	-	-	-265	RNP 1
020	TF	BD402	-	096 (089.4)	-	5.0	R	+4000	-	RNP 1
030	TF	BD403	-	096 (089.4)	-	7.0	-	-FL110	-	RNP 1
040	TF	BD405	-	186 (179.4)	-	29.0	R	+FL120	-	RNP 1
050	TF	GAVDI	-	186 (179.4)	-	19.1	-	-	-	RNP 1
060	TF	BIDAV	-	171 (163.8)	-	42.2	L	-	-	RNP 1

WAYPOINTS LIST

Waypoint	Latitude	Longitude	Waypoint	Latitude	Longitude
BD401	14°49'21.050"N	017°04'27.294"W	GAVDI	14°01'09.292"N	016°51'36.575"W
BD402	14°49'23.779"N	016°59'17.603"W	KOSOM	14°54'44.630"N	017°04'30.343"W
BD403	14°49'27.330"N	016°52'04.032"W	LIGOV	15°28'00.000"N	019°24'15.000"W
BD404	14°36'59.546"N	016°23'14.681"W	LIMAX	16°44'54.960"N	017°20'07.080"W
BD405	14°20'19.929"N	016°51'47.609"W	MEPIX	15°20'24.849"N	017°04'44.891"W
BIDAV	13°20'29.000"N	016°39'33.000"W	NURAS	14°13'20.000"N	015°29'03.000"W
BIKIS	16°16'41.160"N	016°46'57.000"W	SAKLI	16°02'56.700"N	016°27'25.700"W
ERIDI	13°11'36.000"N	015°07'49.000"W	-	-	-



STANDARD DEPARTURE CHART
INSTRUMENT (SID)
Categories A-B-C-D

APP 120.5
TWR 118.8

Blaise DIAGNE / Intl (GOBD)
RWY 19

LIGOV 1H, LIMAX 1H, BIKIS 1H, SAKLI 1H, NURAS 1H, ERIDI 1H, BIDAV 1H,

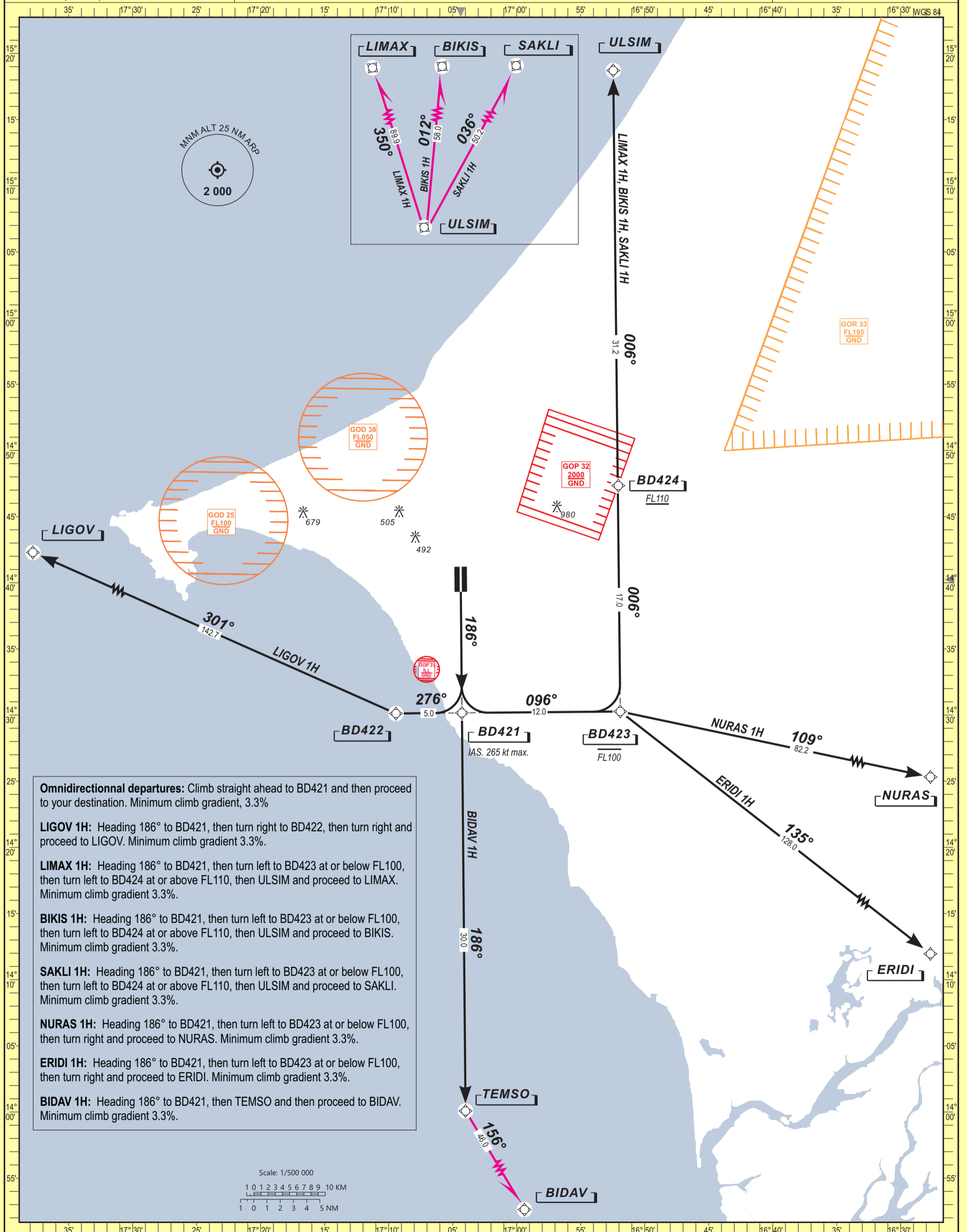
ELEV. & ALT IN FEET
DISTANCE IN NM
BRG ARE MAGNETIC
VAR 7° W (2020)

Notes:

CONTINUOUS CLIMB OPERATIONS (CCO)

TRANSITION ALTITUDE: 3 500

RNP 1



Omnidirectional departures: Climb straight ahead to BD421 and then proceed to your destination. Minimum climb gradient, 3.3%

LIGOV 1H: Heading 186° to BD421, then turn right to BD422, then turn right and proceed to LIGOV. Minimum climb gradient 3.3%.

LIMAX 1H: Heading 186° to BD421, then turn left to BD423 at or below FL100, then turn left to BD424 at or above FL110, then ULSIM and proceed to LIMAX. Minimum climb gradient 3.3%.

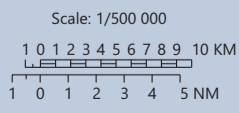
BIKIS 1H: Heading 186° to BD421, then turn left to BD423 at or below FL100, then turn left to BD424 at or above FL110, then ULSIM and proceed to BIKIS. Minimum climb gradient 3.3%.

SAKLI 1H: Heading 186° to BD421, then turn left to BD423 at or below FL100, then turn left to BD424 at or above FL110, then ULSIM and proceed to SAKLI. Minimum climb gradient 3.3%.

NURAS 1H: Heading 186° to BD421, then turn left to BD423 at or below FL100, then turn right and proceed to NURAS. Minimum climb gradient 3.3%.

ERIDI 1H: Heading 186° to BD421, then turn left to BD423 at or below FL100, then turn right and proceed to ERIDI. Minimum climb gradient 3.3%.

BIDAV 1H: Heading 186° to BD421, then TEMSO and then proceed to BIDAV. Minimum climb gradient 3.3%.





TABULAR DESCRIPTION

Serial Number	Path Descriptor	Waypoint Ident.	Fly Over	Course °M (T)	Magnetic Variation	Distance (NM)	Turn Direction	Altitude (ft)	Speed Limit (kt)	NAV. Spec.
LIGOV 1H										
010	CF	BD421	-	186 (179.4)	-	-	-	-	-265	RNP 1
020	TF	BD422	-	276 (269.4)	-	5.0	R	-	-	RNP 1
030	TF	LIGOV	-	301 (294.1)	-	142.7	R	-	-	RNP 1
LIMAX 1H										
010	CF	BD421	-	186 (179.4)	-	-	-	-	-265	RNP 1
020	TF	BD423	-	096 (089.4)	-	12.0	L	-FL100	-	RNP 1
030	TF	BD424	-	006 (359.4)	-	17.0	L	+FL110	-	RNP 1
040	TF	ULSIM	-	006 (359.4)	-	31.2	-	-	-	RNP 1
050	TF	LIMAX	-	350 (342.8)	-	89.9	L	-	-	RNP 1
BIKIS 1H										
010	CF	BD421	-	186 (179.4)	-	-	-	-	-265	RNP 1
020	TF	BD423	-	096 (089.4)	-	12.0	L	-FL100	-	RNP 1
030	TF	BD424	-	006 (359.4)	-	17.0	L	+FL110	-	RNP 1
040	TF	ULSIM	-	006 (359.4)	-	31.2	-	-	-	RNP 1
050	TF	BIKIS	-	012 (005.2)	-	58.0	R	-	-	RNP 1
SAKLI 1H										
010	CF	BD421	-	186 (179.4)	-	-	-	-	-265	RNP 1
020	TF	BD423	-	096 (089.4)	-	12.0	L	-FL100	-	RNP 1
030	TF	BD424	-	006 (359.4)	-	17.0	L	+FL110	-	RNP 1
040	TF	ULSIM	-	006 (359.4)	-	31.2	-	-	-	RNP 1
050	TF	SAKLI	-	036 (028.7)	-	50.2	R	-	-	RNP 1
NURAS 1H										
010	CF	BD421	-	186 (179.4)	-	-	-	-	-265	RNP 1
020	TF	BD423	-	096 (089.4)	-	12.0	L	-FL100	-	RNP 1
030	TF	NURAS	-	109 (101.7)	-	82.2	R	-	-	RNP 1
ERIDI 1H										
010	CF	BD421	-	186 (179.4)	-	-	-	-	-265	RNP 1
020	TF	BD423	-	096 (089.4)	-	12.0	L	-FL100	-	RNP 1
030	TF	ERIDI	-	135 (127.5)	-	128.0	R	-	-	RNP 1
BIDAV 1H										
010	CF	BD421	-	186 (179.4)	-	-	-	-	-265	RNP 1
020	TF	TEM SO	-	186 (179.4)	-	30.0	-	-	-	RNP 1
030	TF	BIDAV	-	156 (148.8)	-	46.0	L	-	-	RNP 1

WAYPOINTS LIST

Waypoint	Latitude	Longitude	Waypoint	Latitude	Longitude
BD421	14°30'09.701"N	017°04'16.467"W	LIGOV	15°28'00.000"N	019°24'15.000"W
BD422	14°30'06.883"N	017°09'25.707"W	LIMAX	16°44'54.960"N	017°20'07.080"W
BD423	14°30'16.003"N	016°51'54.284"W	NURAS	14°13'20.000"N	015°29'03.000"W
BD424	14°47'20.340"N	016°52'03.431"W	SAKLI	16°02'56.700"N	016°27'25.700"W
BIDAV	13°20'29.000"N	016°39'33.000"W	TEM SO	14°00'04.470"N	017°03'59.552"W
BIKIS	16°16'41.160"N	016°46'57.000"W	ULSIM	15°18'42.628"N	016°52'27.337"W
ERIDI	13°11'36.000"N	015°07'49.000"W	-	-	-



STANDARD ARRIVAL CHART
INSTRUMENT (STAR)
Categories A-B-C-D

APP 120.5
TWR 118.8

Blaise DIAGNE / Intl (GOBD)
RWY 01

LIGOV 1A, LIMAX 1A, BIKIS 1A, SAKLI 1A, NURAS 1A, ERIDI 1A, BIDA V 1A

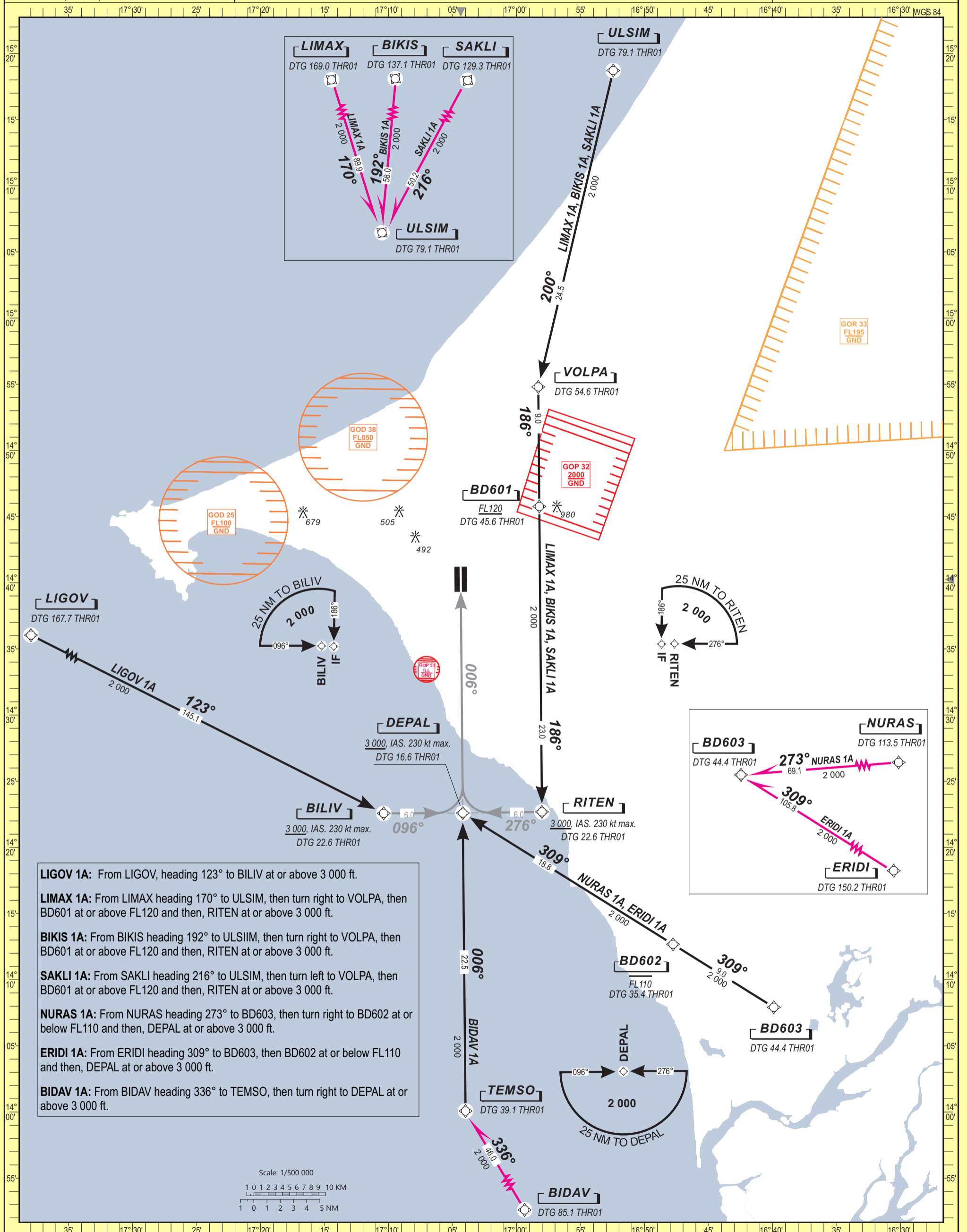
ELEV. & ALT IN FEET
DISTANCE IN NM
BRG ARE MAGNETIC
VAR 7° W (2020)

Notes:

CONTINUOUS DESCENT OPERATIONS (CDO)

TRANSITION ALTITUDE: 3 500

RNP 1



LIGOV 1A: From LIGOV, heading 123° to BILIV at or above 3 000 ft.

LIMAX 1A: From LIMAX heading 170° to ULSIM, then turn right to VOLPA, then BD601 at or above FL120 and then, RITEN at or above 3 000 ft.

BIKIS 1A: From BIKIS heading 192° to ULSIM, then turn right to VOLPA, then BD601 at or above FL120 and then, RITEN at or above 3 000 ft.

SAKLI 1A: From SAKLI heading 216° to ULSIM, then turn left to VOLPA, then BD601 at or above FL120 and then, RITEN at or above 3 000 ft.

NURAS 1A: From NURAS heading 273° to BD603, then turn right to BD602 at or below FL110 and then, DEPAL at or above 3 000 ft.

ERIDI 1A: From ERIDI heading 309° to BD603, then BD602 at or below FL110 and then, DEPAL at or above 3 000 ft.

BIDA V 1A: From BIDA V heading 336° to TEMSO, then turn right to DEPAL at or above 3 000 ft.



TABULAR DESCRIPTION

Serial Number	Path Descriptor	Waypoint Ident.	Fly Over	Course °M (T)	Magnetic Variation	Distance (NM)	Turn Direction	Altitude (ft)	Speed Limit (kt)	NAV. Spec.
LIGOV 1A										
010	IF	LIGOV	-	-	-	-	-	-	-	RNP 1
020	TF	BILIV	-	123 (116.4)	-	145.1	-	+3000	-230	RNP 1
LIMAX 1A										
010	IF	LIMAX	-	-	-	-	-	-	-	RNP 1
020	TF	ULSIM	-	170 (162.7)	-	89.9	-	-	-	RNP 1
030	TF	VOLPA	-	200 (193.4)	-	24.5	R	-	-	RNP 1
040	TF	BD601	-	186 (179.4)	-	9.0	L	+FL120	-	RNP 1
050	TF	RITEN	-	186 (179.4)	-	23.0	-	+3000	-230	RNP 1
BIKIS 1A										
010	IF	BIKIS	-	-	-	-	-	-	-	RNP 1
020	TF	ULSIM	-	192 (185.3)	-	58.0	-	-	-	RNP 1
030	TF	VOLPA	-	200 (193.4)	-	24.5	R	-	-	RNP 1
040	TF	BD601	-	186 (179.4)	-	9.0	L	+FL120	-	RNP 1
050	TF	RITEN	-	186 (179.4)	-	23.0	-	+3000	-230	RNP 1
SAKLI 1A										
010	IF	SAKLI	-	-	-	-	-	-	-	RNP 1
020	TF	ULSIM	-	216 (208.8)	-	50.2	-	-	-	RNP 1
030	TF	VOLPA	-	200 (193.4)	-	24.5	L	-	-	RNP 1
040	TF	BD601	-	186 (179.4)	-	9.0	L	+FL120	-	RNP 1
050	TF	RITEN	-	186 (179.4)	-	23.0	-	+3000	-230	RNP 1
NURAS 1A										
010	IF	NURAS	-	-	-	-	-	-	-	RNP 1
020	TF	BD603	-	273 (265.7)	-	69.1	-	-	-	RNP 1
030	TF	BD602	-	309 (301.8)	-	9.0	R	-FL110	-	RNP 1
040	TF	DEPAL	-	309 (301.8)	-	18.8	-	+3000	-230	RNP 1
ERIDI 1A										
010	IF	ERIDI	-	-	-	-	-	-	-	RNP 1
020	TF	BD603	-	309 (302.2)	-	105.8	-	-	-	RNP 1
030	TF	BD602	-	309 (301.8)	-	9.0	-	-FL110	-	RNP 1
040	TF	DEPAL	-	309 (301.8)	-	18.8	-	+3000	-230	RNP 1
BIDAV 1A										
010	IF	BIDAV	-	-	-	-	-	-	-	RNP 1
020	TF	TEMESO	-	336 (328.9)	-	46.0	-	-	-	RNP 1
030	TF	DEPAL	-	006 (359.4)	-	22.5	R	+3000	-230	RNP 1

WAYPOINTS LIST

Waypoint	Latitude	Longitude	Waypoint	Latitude	Longitude
BD601	14°45'45.572"N	016°58'13.706"W	LIGOV	15°28'00.000"N	019°24'15.000"W
BD602	14°12'40.601"N	016°47'46.970"W	LIMAX	16°44'54.960"N	017°20'07.080"W
BD603	14°07'54.671"N	016°39'54.656"W	NURAS	14°13'20.000"N	015°29'03.000"W
BIDAV	13°20'29.000"N	016°39'33.000"W	RITEN	14°22'40.874"N	016°58'01.342"W
BIKIS	16°16'41.160"N	016°46'57.000"W	SAKLI	16°02'56.700"N	016°27'25.700"W
BILIV	14°22'34.262"N	017°10'23.103"W	TEMESO	14°00'04.470"N	017°03'59.552"W
DEPAL	14°22'37.649"N	017°04'12.224"W	ULSIM	15°18'42.628"N	016°52'27.337"W
ERIDI	13°11'36.000"N	015°07'49.000"W	VOLPA	14°54'47.859"N	016°58'18.560"W



STANDARD ARRIVAL CHART
INSTRUMENT (STAR)
Categories A-B-C-D

APP 120.5
TWR 118.8

Blaise DIAGNE / Intl (GOBD)
RWY 19

LIGOV 1G, LIMAX 1G, BIKIS 1G, SAKLI 1G, NURAS 1G, ERIDI 1G, BIDAV 1G

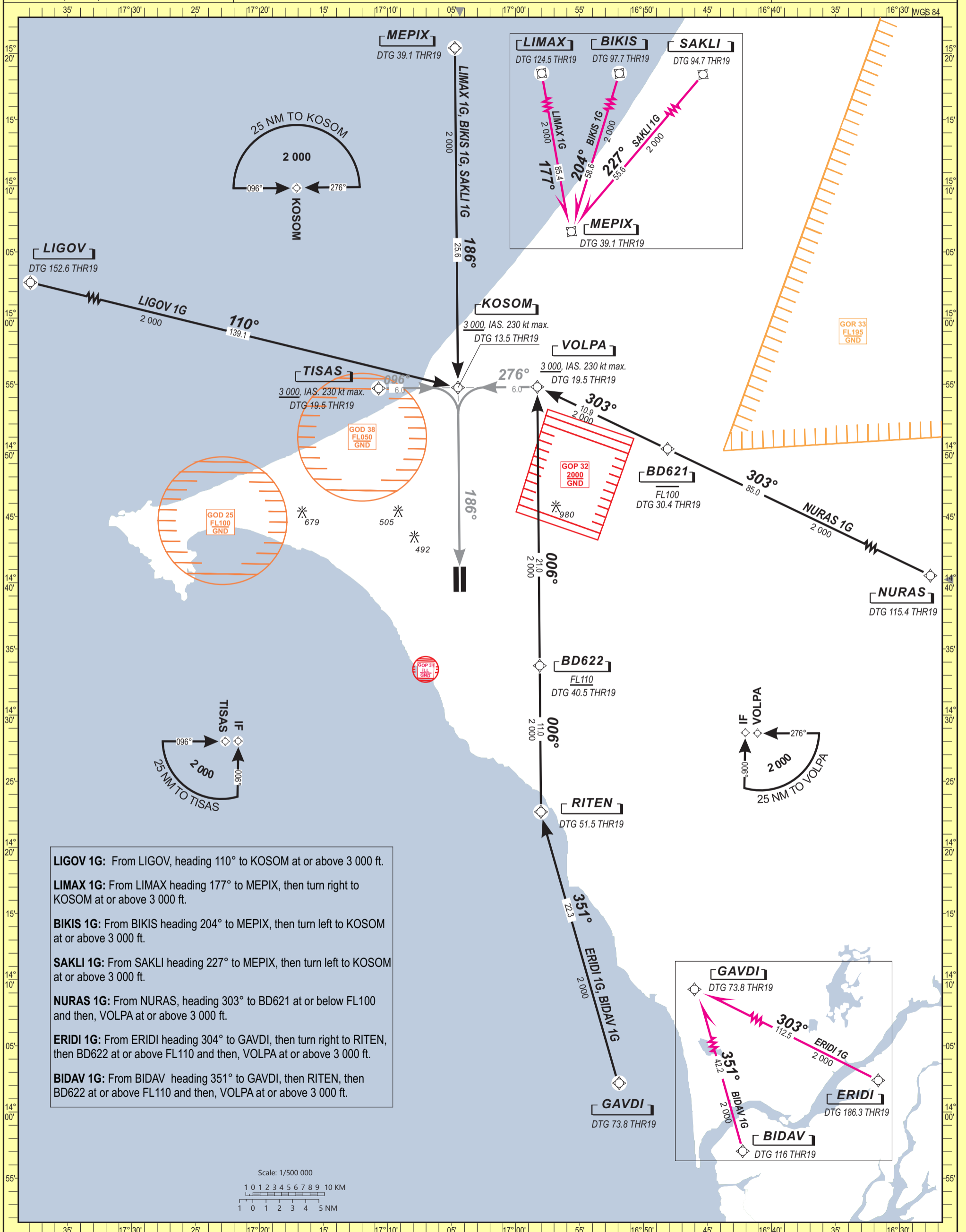
ELEV. & ALT IN FEET
DISTANCE IN NM
BRG ARE MAGNETIC
VAR 7° W (2020)

Notes:

CONTINUOUS DESCENT OPERATIONS (CDO)

TRANSITION ALTITUDE: 3 500

RNP 1



LIGOV 1G: From LIGOV, heading 110° to KOSOM at or above 3 000 ft.

LIMAX 1G: From LIMAX heading 177° to MEPIX, then turn right to KOSOM at or above 3 000 ft.

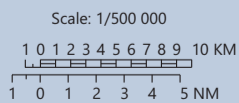
BIKIS 1G: From BIKIS heading 204° to MEPIX, then turn left to KOSOM at or above 3 000 ft.

SAKLI 1G: From SAKLI heading 227° to MEPIX, then turn left to KOSOM at or above 3 000 ft.

NURAS 1G: From NURAS, heading 303° to BD621 at or below FL100 and then, VOLPA at or above 3 000 ft.

ERIDI 1G: From ERIDI heading 304° to GAVDI, then turn right to RITEN, then BD622 at or above FL110 and then, VOLPA at or above 3 000 ft.

BIDAV 1G: From BIDAV heading 351° to GAVDI, then RITEN, then BD622 at or above FL110 and then, VOLPA at or above 3 000 ft.





TABULAR DESCRIPTION

Serial Number	Path Descriptor	Waypoint Ident.	Fly Over	Course °M (T)	Magnetic Variation	Distance (NM)	Turn Direction	Altitude (ft)	Speed Limit (kt)	NAV. Spec.
LIGOV 1G										
010	IF	LIGOV	-	-	-	-	-	-	-	RNP 1
020	TF	KOSOM	-	110 (103.5)	-	139.1	-	+3000	-230	RNP 1
LIMAX 1G										
010	IF	LIMAX	-	-	-	-	-	-	-	RNP 1
020	TF	MEPIX	-	177 (170.0)	-	85.4	-	-	-	RNP 1
030	TF	KOSOM	-	186 (179.4)	-	25.6	R	+3000	-230	RNP 1
BIKIS 1G										
010	IF	BIKIS	-	-	-	-	-	-	-	RNP 1
020	TF	MEPIX	-	204 (197.1)	-	58.6	-	-	-	RNP 1
030	TF	KOSOM	-	186 (179.4)	-	25.6	L	+3000	-230	RNP 1
SAKLI 1G										
010	IF	SAKLI	-	-	-	-	-	-	-	RNP 1
020	TF	MEPIX	-	227 (220.4)	-	55.6	-	-	-	RNP 1
030	TF	KOSOM	-	186 (179.4)	-	25.6	L	+3000	-230	RNP 1
NURAS 1G										
010	IF	NURAS	-	-	-	-	-	-	-	RNP 1
020	TF	BD621	-	303 (295.7)	-	85.0	-	-FL100	-	RNP 1
030	TF	VOLPA	-	303 (295.7)	-	10.9	-	+3000	-230	RNP 1
ERIDI 1G										
010	IF	ERIDI	-	-	-	-	-	-	-	RNP 1
020	TF	GAVDI	-	303 (296.2)	-	112.5	-	-	-	RNP 1
030	TF	RITEN	-	351 (343.8)	-	22.3	R	-	-	RNP 1
040	TF	BD622	-	006 (359.4)	-	11.0	R	+FL110	-	RNP 1
050	TF	VOLPA	-	006 (359.4)	-	21.0	-	+3000	-230	RNP 1
BIDAV 1G										
010	IF	BIDAV	-	-	-	-	-	-	-	RNP 1
020	TF	GAVDI	-	351 (343.8)	-	42.2	-	-	-	RNP 1
030	TF	RITEN	-	351 (343.8)	-	22.3	-	-	-	RNP 1
040	TF	BD622	-	006 (359.4)	-	11.0	R	+FL110	-	RNP 1
050	TF	VOLPA	-	006 (359.4)	-	21.0	-	+3000	-230	RNP 1

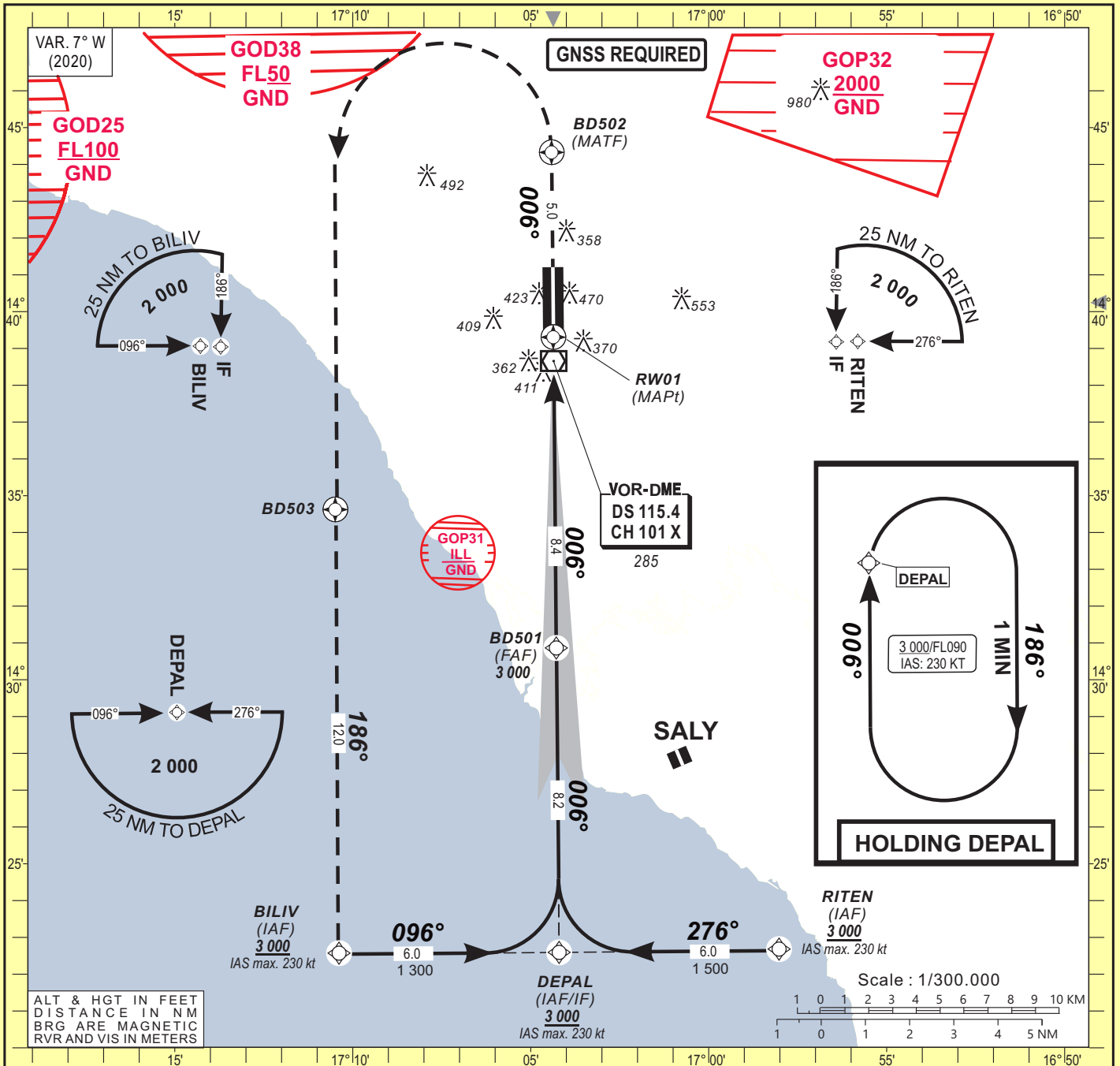
WAYPOINTS LIST

Waypoint	Latitude	Longitude	Waypoint	Latitude	Longitude
BD621	14°50'06.744"N	016°48'07.929"W	LIMAX	16°44'54.960"N	017°20'07.080"W
BD622	14°33'43.690"N	016°58'07.254"W	MEPIX	15°20'24.849"N	017°04'44.891"W
BIKIS	16°16'41.160"N	016°46'57.000"W	NURAS	14°13'20.000"N	015°29'03.000"W
ERIDI	13°11'36.000"N	015°07'49.000"W	RITEN	14°22'40.874"N	016°58'01.342"W
GAVDI	14°01'09.292"N	016°51'36.575"W	SAKLI	16°02'56.700"N	016°27'25.700"W
KOSOM	14°54'44.630"N	017°04'30.343"W	TISAS	14°54'41.232"N	017°10'42.123"W
LIGOV	15°28'00.000"N	019°24'15.000"W	VOLPA	14°54'47.859"N	016°58'18.560"W

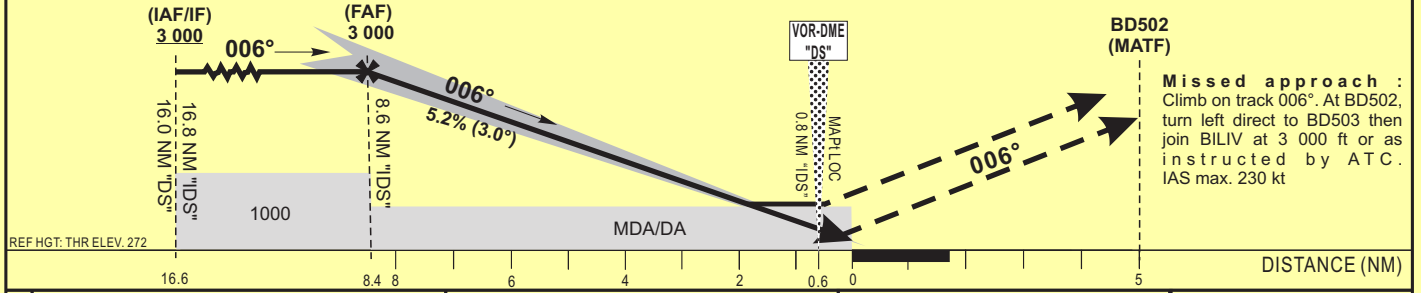
INSTRUMENT APPROACH CHART
Categories A-B-C-D

ELEV : 290 APP : 120.5
THR : 272 TWR : 118.8
HEIGHT RELATED TO THR RWY 01 ELEVATION

Blaise DIAGNE / Intl (GOBD)
ILS X or LOC X RWY 01
IDENT ILS "IDS" FREQ 110.1



TRANSITION ALTITUDE: 3 500	Distance to DME-ILS "IDS" (NM)	FAF	8	7	6	5	4	3	2
	Altitude (ft)	3 000	2 805	2 490	2 170	1 850	1 530	1 215	895



CAT	CAT. I				LOC-DME				Circling B				RVR for take-off: CAT. A - B - C - D: 400
	OCA (OCH)	DA	DH	RVR 1	RVR 2	OCA (OCH)	MDA	MDH	RVR 1	RVR 2	OCA (OCH)	MDA	
A	472 (200)	480 (200)	550	550	1000	627 (355)	630 (360)	900	1500	766 (476)	770 (480)	1500	
B	472 (200)	480 (200)	550	550	1000	627 (355)	630 (360)	1000	1500	782 (492)	790 (500)	1600	
C	479 (207)	480 (210)	600	600	1000	627 (355)	630 (360)	1000	1800	887 (597)	890 (600)	2400	
D	489 (217)	490 (220)	600	600	1000	627 (355)	630 (360)	1400	2000	979 (689)	980 (690)	3600	

Notes:
1 With approach lights
2 Without approach lights
B Daytime only. OCH and MDH AAL
 - Minimum temperature : 10° C
 - RDH: 15 m

**INSTRUMENT
APPROACH CHART**
Categories A-B-C-D

ELEV : 290

APP : 120.5

THR : 272

TWR : 118.8

HEIGHT RELATED TO THR RWY 01 ELEVATION

Blaise DIAGNE / Intl (GOBD)

ILS X or LOC X RWY 01

IDENT ILS "IDS" FREQ 110.1

TABULAR DESCRIPTION

Serial Number	Path Descriptor	Waypoint Identifier	Fly-Over	Course °M(°T)	Magnetic Variation	Distance (NM)	Turn Direction	Altitude (ft)	Speed limit (Kt)	VPA/TCH (°/m)	Navigation Specification
010	IF	BILIV	—	—	—	—	—	+3000	-230	—	RNP APCH
020	TF	DEPAL	—	096(089.4)	—	6.0	—	+3000	-230	—	RNP APCH
010	IF	RITEN	—	—	—	—	—	+3000	-230	—	RNP APCH
020	TF	DEPAL	—	276(269.4)	—	6.0	—	+3000	-230	—	RNP APCH
010	IF	DEPAL	—	—	—	—	—	+3000	-230	—	RNP APCH
020	TF	BD501	—	006(359.4)	—	8.2	—	@3000	—	—	N/A
030	TF	RW01	Y	006(359.4)	—	8.4	—	@322	—	3.0/15	N/A
010	IF	RW01	—	—	—	—	—	—	—	—	N/A
020	CF	BD502	Y	006(359.4)	+7.0	5.0	—	—	-230	—	RNP APCH
030	DF	BD503	—	—	—	—	L	—	-230	—	RNP APCH
040	TF	BILIV	—	—	—	12.0	—	+3000	-230	—	RNP APCH
010	IF	DEPAL	—	—	—	—	—	+3000	-230	—	RNP APCH
020	HM	DEPAL	—	006(359.4)	—	—	R	+3000	-230	—	RNP APCH

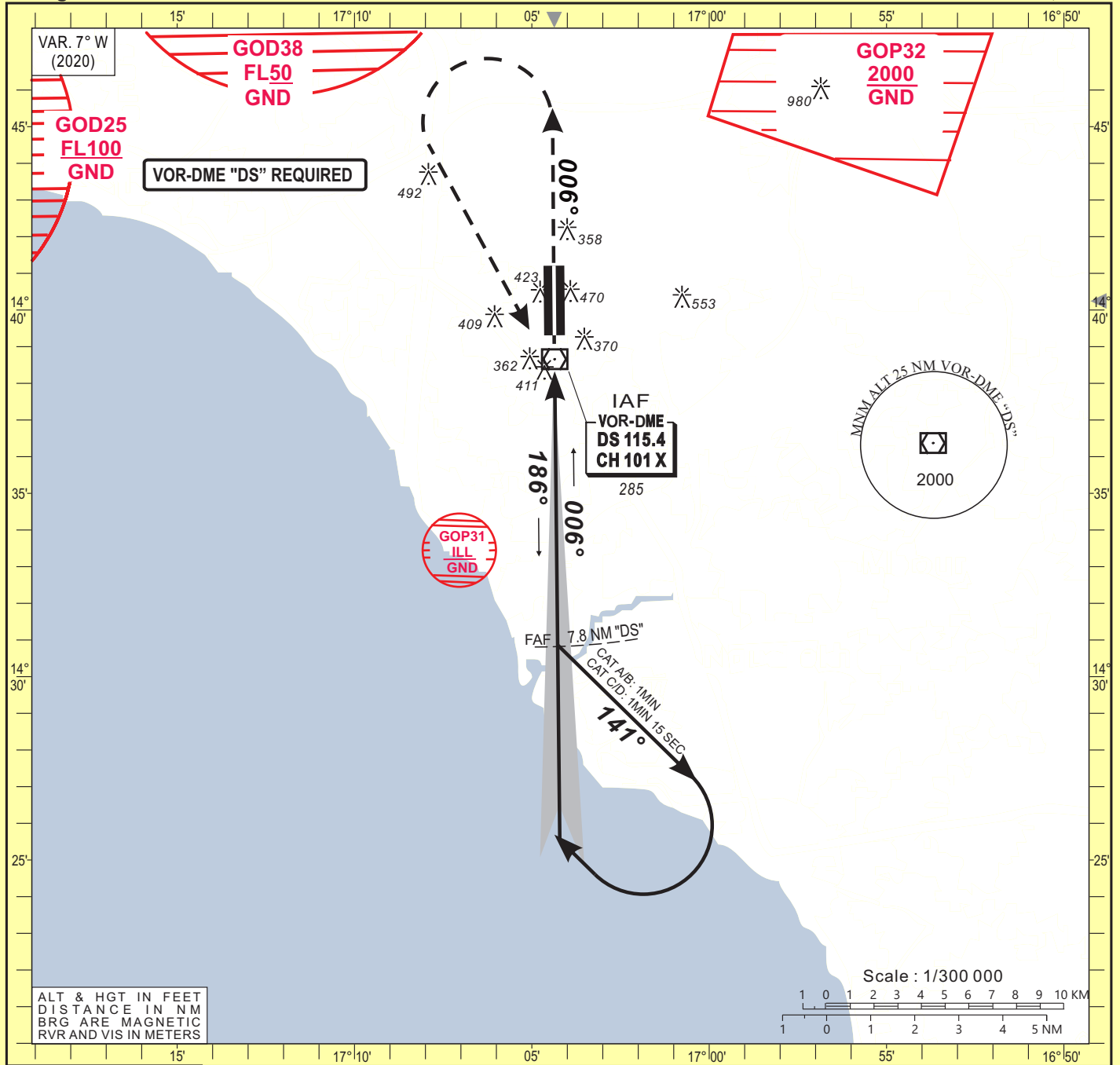
WAYPOINT LIST

Waypoint Identifier	Coordinates	
BILIV	14°22'34.262"N	017°10'23.103"W
DEPAL	14°22'37.649"N	017°04'12.224"W
RITEN	14°22'40.874"N	016°58'01.342"W
BD501	14°30'51.747"N	017°04'16.861"W
BD502	14°44'19.907"N	017°04'24.459"W
BD503	14°34'37.334"N	017°10'29.582"W
RW01	14°39'18.634"N	017°04'21.625"W

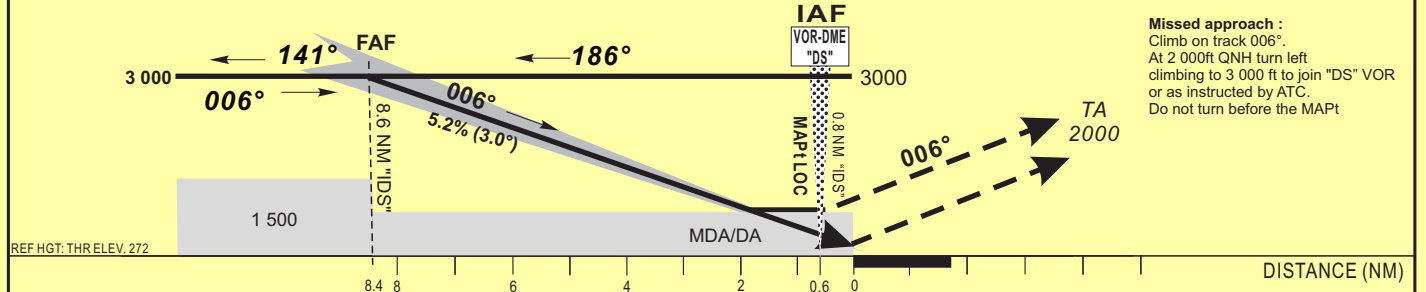
INSTRUMENT APPROACH CHART
Categories A-B-C-D

ELEV : 290 DIASS APP : 120.5
THR : 272 DIASS TWR : 118.8
HEIGHT RELATED TO THR RWY 01 ELEVATION

Blaise DIAGNE / Intl (GOBD)
ILS Y or LOC Y RWY 01
IDENT ILS "IDS" FREQ 110.1



TRANSITION ALTITUDE: 3 500	Distance to DME-ILS "IDS" (NM)	FAF	8	7	6	5	4	3	2
	Altitude (ft)	3 000	2 805	2 490	2 170	1 850	1 530	1 215	895



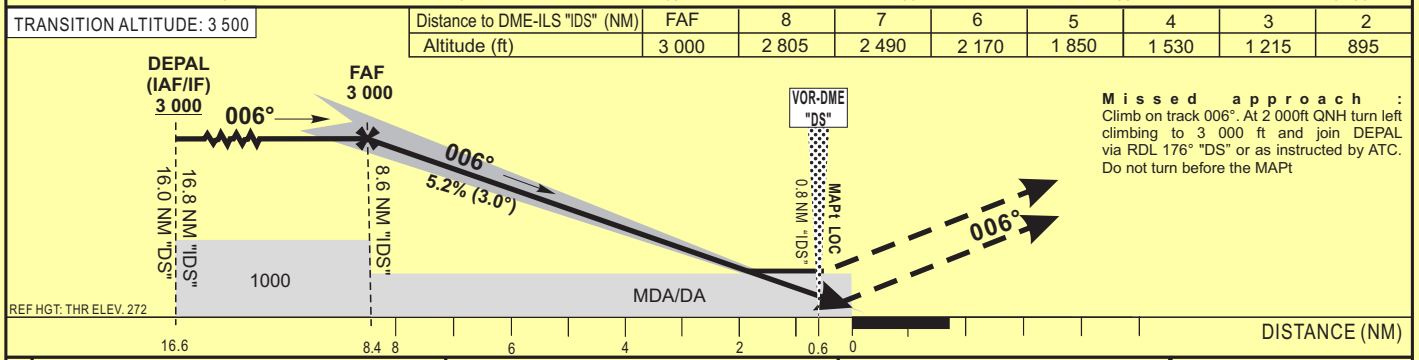
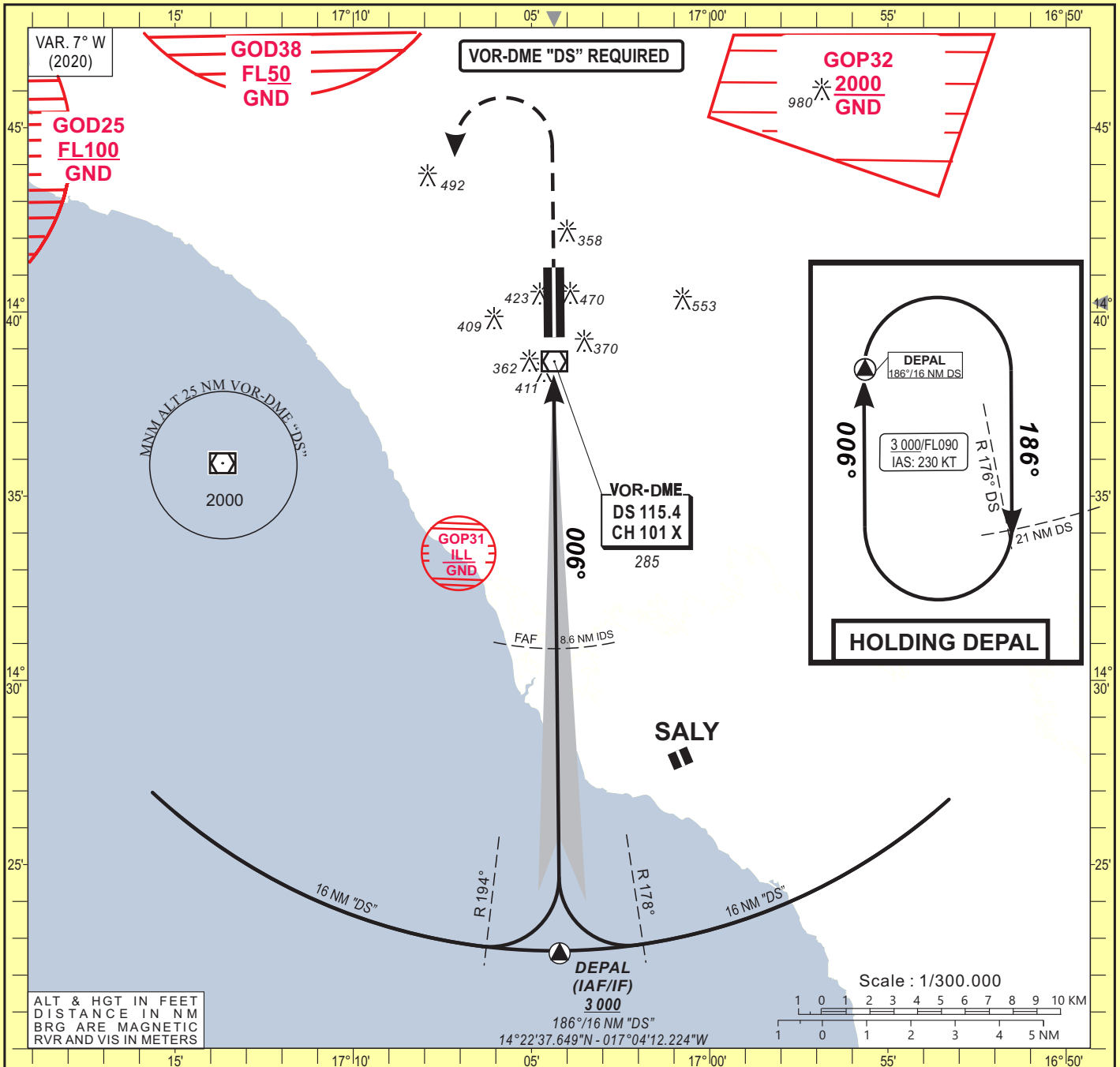
CAT	CAT. I				LOC-DME				Circling			RVR for take-off: CAT. A - B - C - D: 400					
	OCA (OCH)	DA	DH	RVR	RVR	OCA (OCH)	MDA	MDH	RVR	RVR	OCA (OCH)		MDA	MDH	VIS		
A	472 (200)	480 (200)	550	1000	627 (355)	630 (360)	900	1500	766 (476)	770 (480)	1500	Timing		FAF / THR 8.4 NM			
B	472 (200)	480 (200)	550	1000	627 (355)	630 (360)	1000	1500	782 (492)	790 (500)	1600	KT	MIN	SEC	KT	MIN	SEC
C	479 (207)	480 (210)	600	1000	627 (355)	630 (360)	1000	1800	887 (597)	890 (600)	2400	90	5	36	140	3	36
D	489 (217)	490 (220)	600	1000	627 (355)	630 (360)	1400	2000	979 (689)	980 (690)	3600	100	5	02	150	3	22
												110	4	35	160	3	09
												120	4	12	170	2	58
												130	3	53	180	2	48

Notes: With approach lights
 Without approach lights
 Daytime only. OCH and MDH AAL

INSTRUMENT APPROACH CHART
Categories A-B-C-D

ELEV : 290 APP : 120.5
THR : 272 TWR : 118.8
HEIGHT RELATED TO THR RWY 01 ELEVATION

Blaise DIAGNE / Intl (GOBD)
ILS Z or LOC Z RWY 01
IDENT ILS "IDS" FREQ 110.1



CAT	CAT. I				LOC-DME				Circling B				RVR for take-off: CAT. A - B - C - D: 400	
	OCA (OCH)	DA	DH	RVR 1	RVR 2	OCA (OCH)	MDA	MDH	RVR 1	RVR 2	OCA (OCH)	MDA		MDH
A	472 (200)	480 (200)	550	550	1000	627 (355)	630 (360)	900	1500	766 (476)	770 (480)	1500		
B	472 (200)	480 (200)	550	550	1000	627 (355)	630 (360)	1000	1500	782 (492)	790 (500)	1600		
C	479 (207)	480 (210)	600	600	1000	627 (355)	630 (360)	1000	1800	887 (597)	890 (600)	2400		
D	489 (217)	490 (220)	600	600	1000	627 (355)	630 (360)	1400	2000	979 (689)	980 (690)	3600		

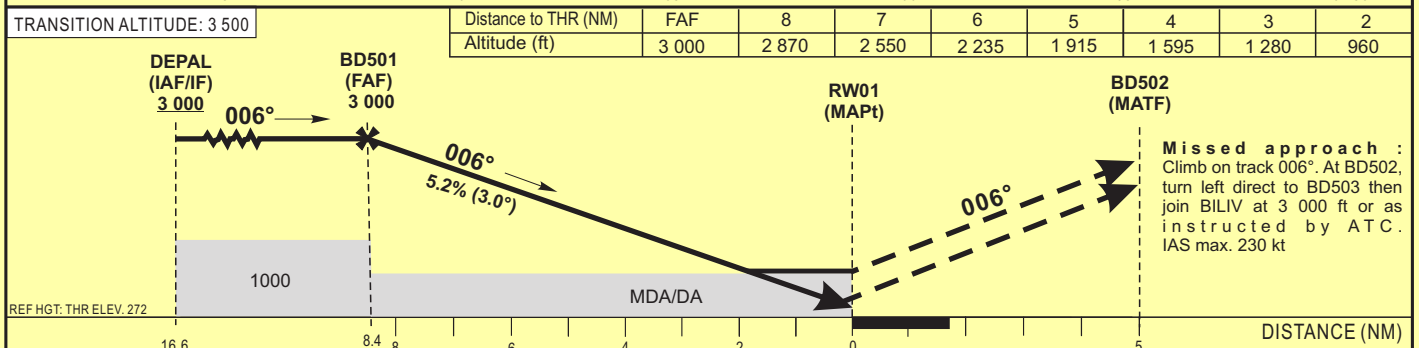
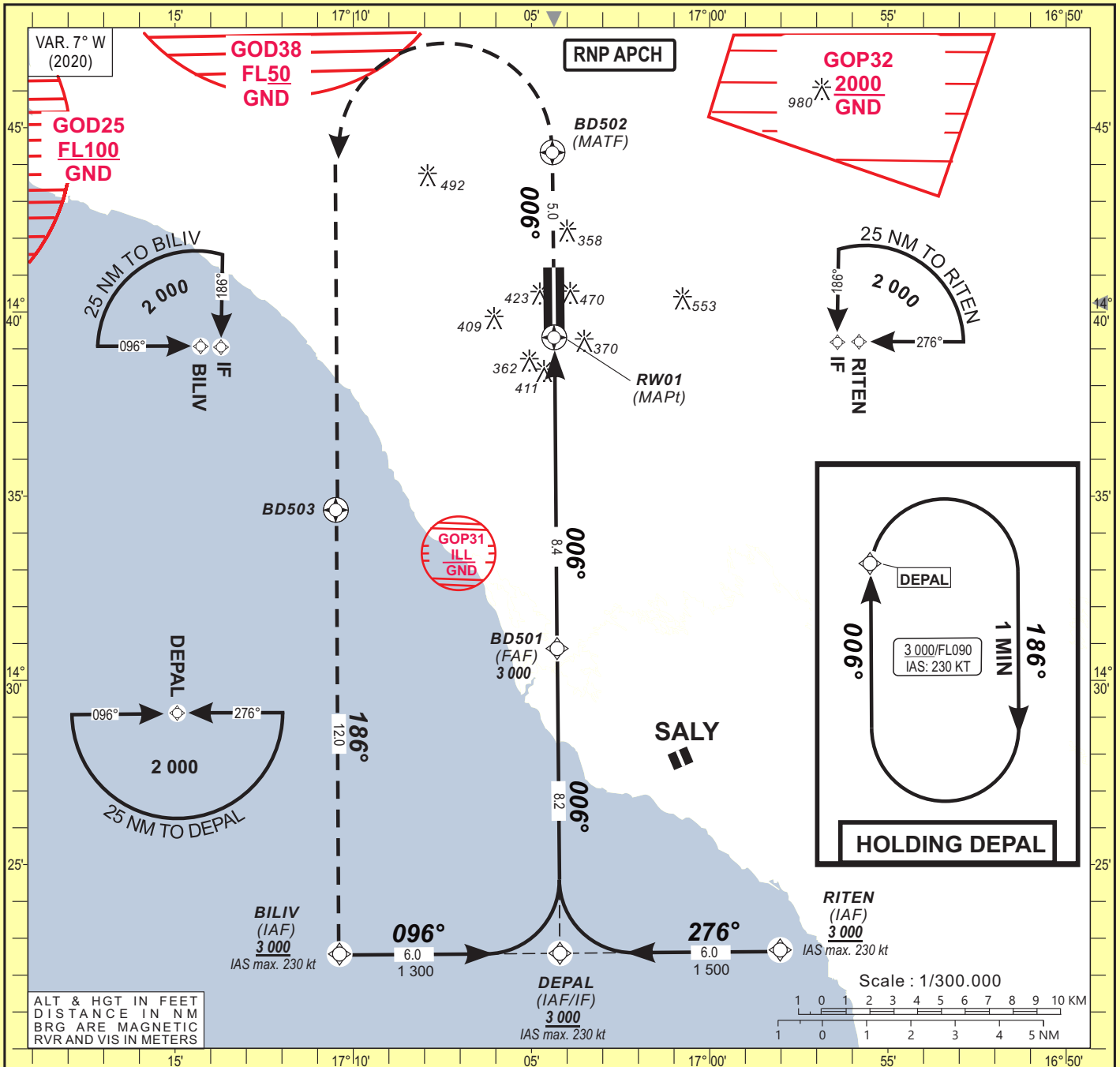
Notes:
1 With approach lights
2 Without approach lights
B Daytime only. OCH and MDH AAL
 - RDH: 15 m

Timing		FAF / THR 8.4 NM	
KT	MIN SEC	KT	MIN SEC
90	5 Min 36	140	3 Min 36
100	5 Min 02	150	3 Min 22
110	4 Min 35	160	3 Min 09
120	4 Min 12	170	2 Min 58
130	3 Min 53	180	2 Min 48

**INSTRUMENT
APPROACH CHART**
Categories A-B-C-D

ELEV : 290 APP : 120.5
THR : 272 TWR : 118.8
HEIGHT RELATED TO THR RWY 01 ELEVATION

**Blaise DIAGNE / Intl (GOBD)
RNP RWY 01**



CAT	LNAV/VNAV				LNAV				Circling 3				RVR for take-off: CAT. A - B - C - D: 400
	OCA (OCH)	DA	DH	RVR 1	RVR 2	OCA (OCH)	MDA	MDH	RVR 1	RVR 2	OCA (OCH)	MDA	
A	541 (269)	550 (270)	650	650	1200	657 (385)	660 (390)	900	1500	766 (476)	770 (480)	1500	Timing FAF / THR 8.4 NM KT MIN SEC KT MIN SEC
B	553 (281)	560 (290)	650	650	1200	657 (385)	660 (390)	1000	1500	782 (492)	790 (500)	1600	
C	561 (289)	570 (290)	650	650	1200	657 (385)	660 (390)	1000	1800	887 (597)	890 (600)	2400	
D	572 (300)	580 (300)	650	650	1200	657 (385)	660 (390)	1400	2000	979 (689)	980 (690)	3600	

Notes:
1 With approach lights
2 Without approach lights
3 Daytime only. OCH and MDH AAL
 - Minimum temperature : 10° C
 - RDH: 15 m

**INSTRUMENT
APPROACH CHART**
 Categories A-B-C-D

ELEV : 290

APP : 120.5

THR : 272

TWR : 118.8

 Blaise DIAGNE / Intl (GOBD)
 RNP RWY 01

HEIGHT RELATED TO THR RWY 01 ELEVATION

TABULAR DESCRIPTION

Serial Number	Path Descriptor	Waypoint Identifier	Fly-Over	Course °M(°T)	Magnetic Variation	Distance (NM)	Turn Direction	Altitude (ft)	Speed limit (Kt)	VPA/TCH (°/m)	Navigation Specification
010	IF	BILIV	—	—	—	—	—	+3000	-230	—	RNP APCH
020	TF	DEPAL	—	096(089.4)	—	6.0	—	+3000	-230	—	RNP APCH
010	IF	RITEN	—	—	—	—	—	+3000	-230	—	RNP APCH
020	TF	DEPAL	—	276(269.4)	—	6.0	—	+3000	-230	—	RNP APCH
010	IF	DEPAL	—	—	—	—	—	+3000	-230	—	RNP APCH
020	TF	BD501	—	006(359.4)	—	8.2	—	@3000	—	—	RNP APCH
030	TF	RW01	Y	006(359.4)	—	8.4	—	@322	—	3.0/15	RNP APCH
010	IF	RW01	—	—	—	—	—	—	—	—	RNP APCH
020	CF	BD502	Y	006(359.4)	+7.0	5.0	—	—	-230	—	RNP APCH
030	DF	BD503	—	—	—	—	L	—	-230	—	RNP APCH
040	TF	BILIV	—	—	—	12.0	—	+3000	-230	—	RNP APCH
010	IF	DEPAL	—	—	—	—	—	+3000	-230	—	RNP APCH
020	HM	DEPAL	—	006(359.4)	—	—	R	+3000	-230	—	RNP APCH

WAYPOINTS LIST

Waypoint Identifier	Coordinates	
BILIV	14°22'34.262"N	017°10'23.103"W
DEPAL	14°22'37.649"N	017°04'12.224"W
RITEN	14°22'40.874"N	016°58'01.342"W
BD501	14°30'51.747"N	017°04'16.861"W
BD502	14°44'19.907"N	017°04'24.459"W
BD503	14°34'37.334"N	017°10'29.582"W
RW01	14°39'18.634"N	017°04'21.625"W

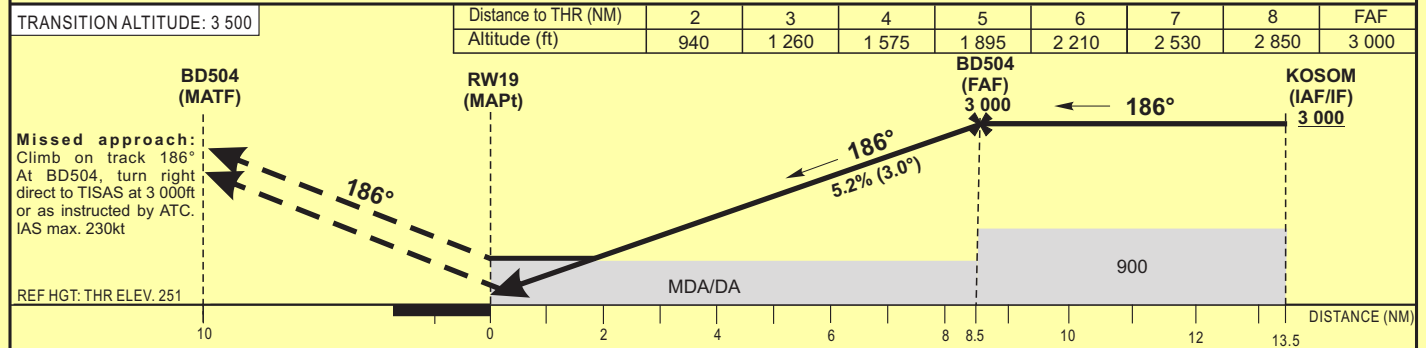
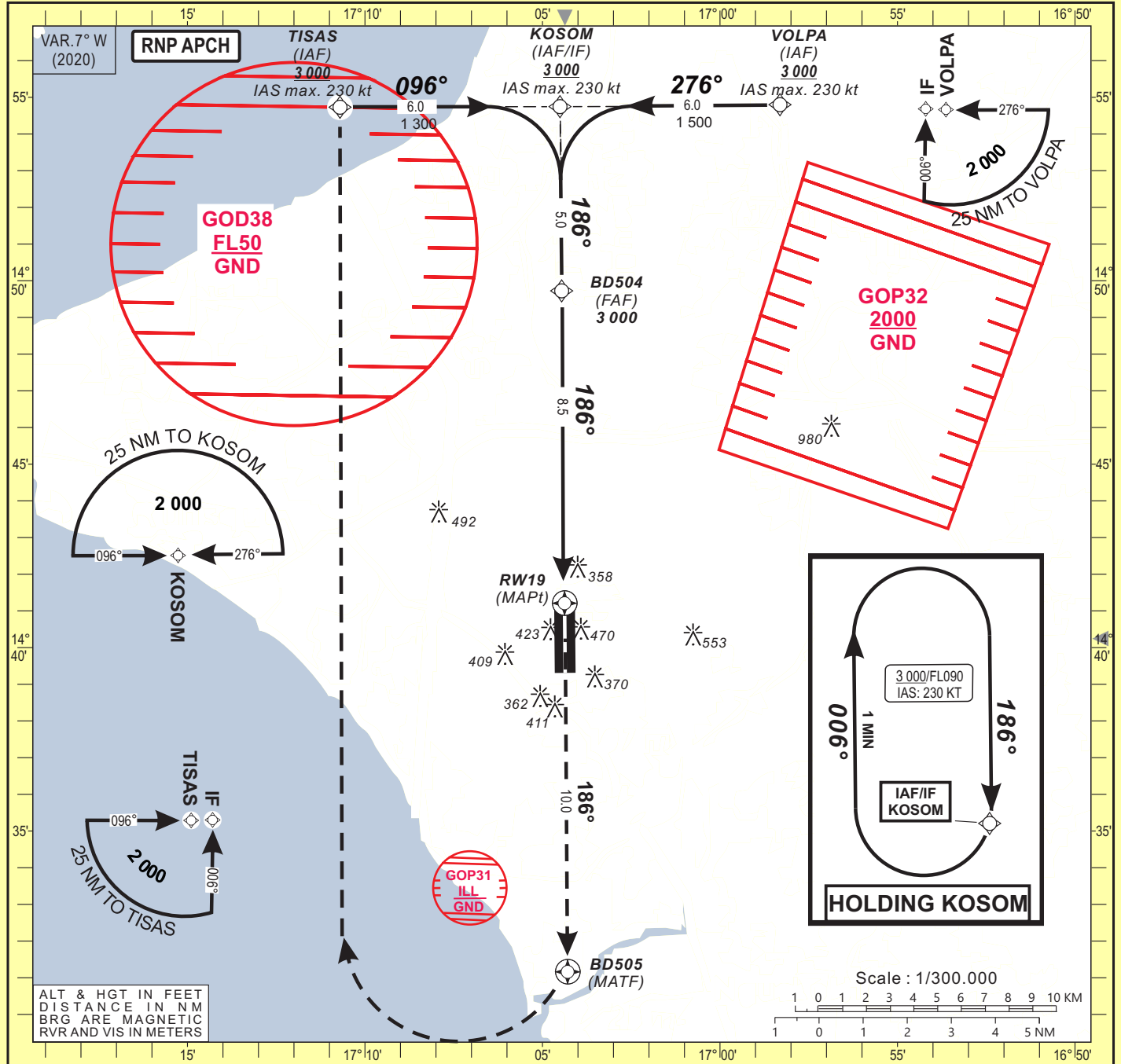
INSTRUMENT APPROACH CHART
Categories A-B-C-D

ELEV : 290
THR : 251

DIASS APP : 120.5
DIASS TWR : 118.8

Blaise DIAGNE / Intl (GOBD)
RNP RWY 19

HEIGHT RELATED TO THR RWY 19 ELEVATION



CAT	LNAV/VNAV				LNAV				Circling			RVR for take-off : CAT. A - B - C - D : 400				
	OCA (OCH)	DA	DH	RVR 1	RVR 2	OCA (OCH)	MDA	MDH	RVR 1	RVR 2	OCA (OCH)	MDA	MDH	VIS	Timing	FAF / THR
A	501 (250)	510 (250)	700	700	1000	620 (369)	620 (370)	1200	1500	766 (476)	770 (480)	1500	1500			
B	502 (251)	510 (260)	800	800	1200	620 (369)	620 (370)	1300	1500	782 (492)	790 (500)	1600	1600			
C	515 (264)	520 (270)	800	800	1200	620 (369)	620 (370)	1400	1800	887 (597)	890 (600)	2400	2400			
D	542 (291)	550 (300)	800	800	1200	620 (369)	620 (370)	1600	2000	979 (689)	980 (690)	3600	3600			

Notes:

- With approach lights
- Without approach lights
- Daytime only. OCH and MDH AAL

- Minimum temperature : 10° C
- RDH : 15 m

**INSTRUMENT
APPROACH CHART**
Categories A-B-C-D

ELEV : 290

APP : 120.5

THR : 251

TWR : 118.8

Blaise DIAGNE / Intl (GOBD)
RNP RWY 19

HEIGHT RELATED TO THR RWY 19 ELEVATION

TABULAR DESCRIPTION

Serial Number	Path Descriptor	Waypoint Identifier	Fly-Over	Course °M(°T)	Magnetic Variation	Distance (NM)	Turn Direction	Altitude (ft)	Speed limit (Kt)	VPA/TCH (°/m)	Navigation Specification
010	IF	TISAS	—	—	—	—	—	+3000	-230	—	RNP APCH
020	TF	KOSOM	—	096(089.4)	—	6.0	—	+3000	-230	—	RNP APCH
010	IF	VOLPA	—	—	—	—	—	+3000	-230	—	RNP APCH
020	TF	KOSOM	—	276(269.4)	—	6.0	—	+3000	-230	—	RNP APCH
010	IF	KOSOM	—	—	—	—	—	+3000	-230	—	RNP APCH
020	TF	BD504	—	186(179.4)	—	5.0	—	@3000	—	—	RNP APCH
030	TF	RW19	Y	186(179.4)	—	8.5	—	@301	—	3.0/15	RNP APCH
010	IF	RW19	—	—	—	—	—	—	—	—	RNP APCH
020	CF	BD505	Y	186(179.4)	+7.0	10.0	—	—	-230	—	RNP APCH
030	DF	TISAS	—	—	—	—	R	+3000	-230	—	RNP APCH
010	IF	KOSOM	—	—	—	—	—	+3000	-230	—	RNP APCH
020	HM	KOSOM	—	186(179.4)	—	—	R	+3000	-230	—	RNP APCH

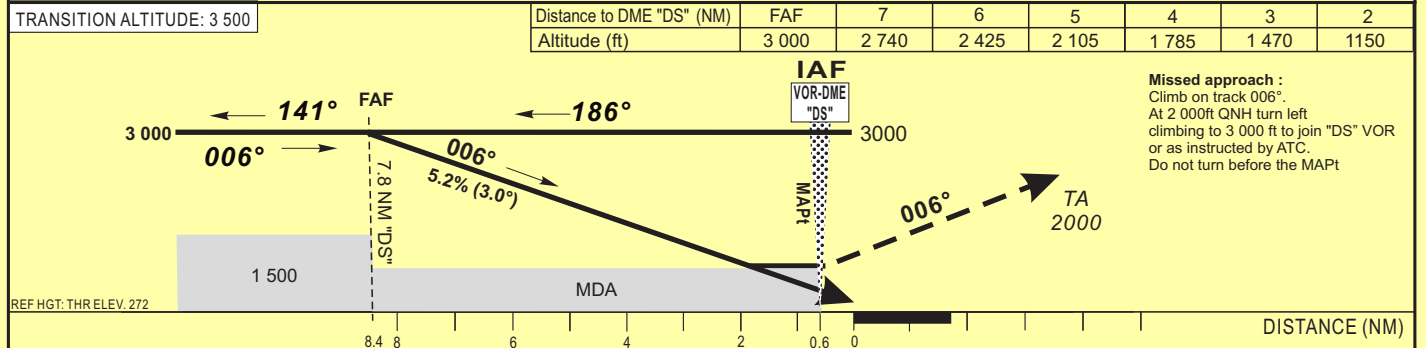
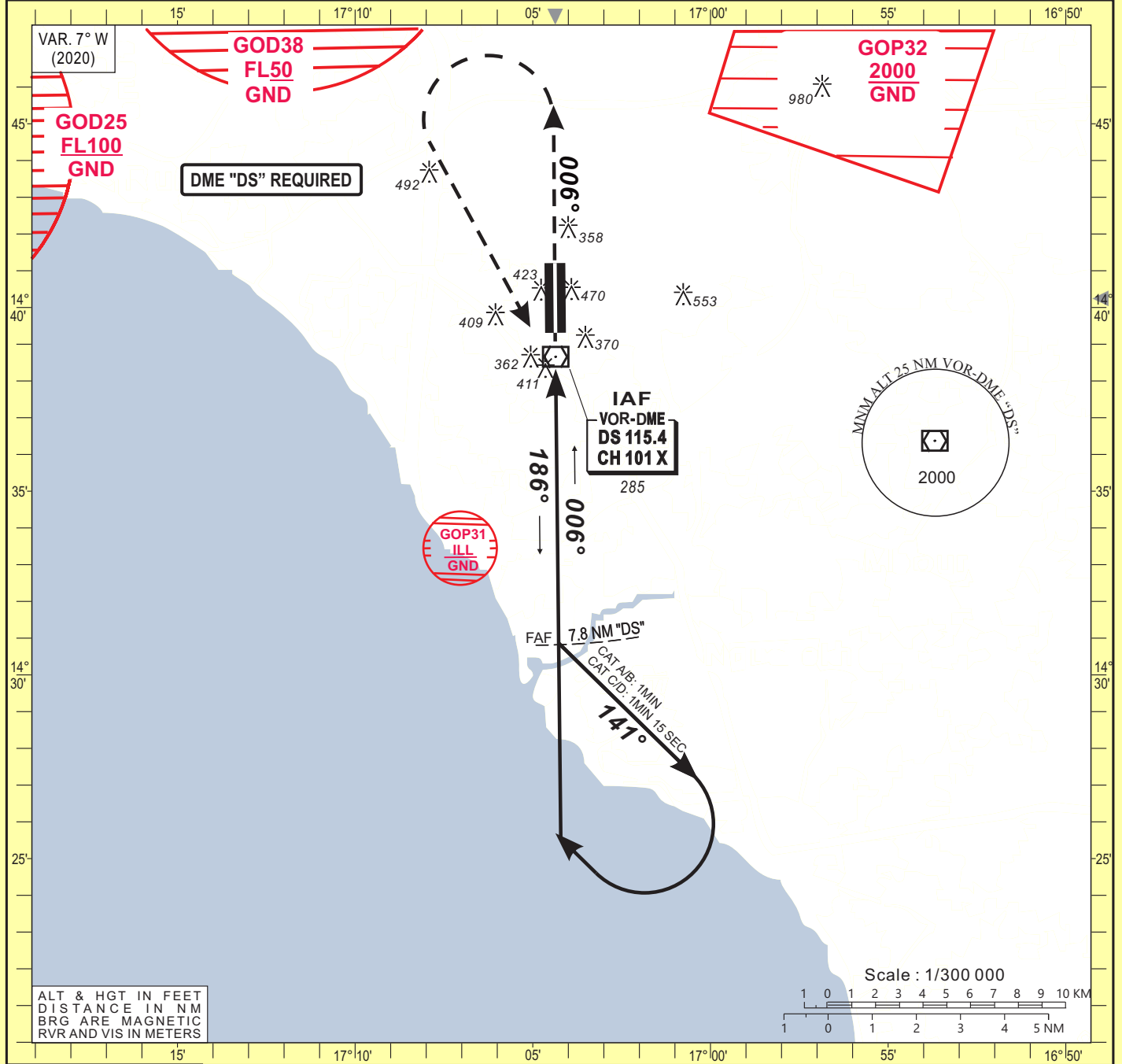
WAYPOINTS LIST

Waypoint Identifier	Coordinates	
KOSOM	14°54'44.630"N	017°04'30.343"W
TISAS	14°54'41.232"N	017°10'42.123"W
VOLPA	14°54'47.859"N	016°58'18.560"W
BD504	14°49'43.361"N	017°04'27.504"W
BD505	14°31'09.957"N	017°04'17.032"W
RW19	14°41'12.508"N	017°04'22.696"W

INSTRUMENT APPROACH CHART
Categories A-B-C-D

ELEV : 290 DIASS APP : 120.5
THR : 272 DIASS TWR : 118.8
HEIGHT RELATED TO THR RWY 01 ELEVATION

Blaise DIAGNE / Intl (GOBD)
VOR Y RWY 01
IDENT VOR "DS" FREQ 115.4



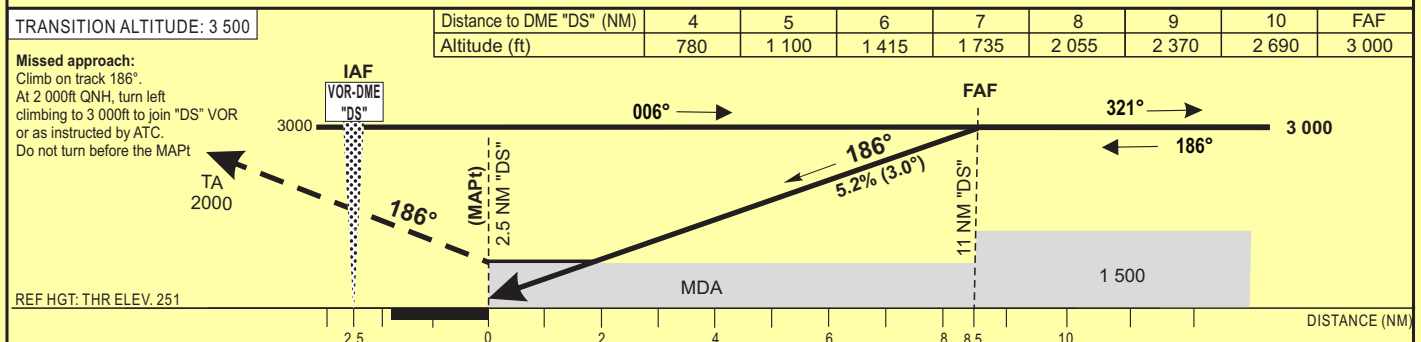
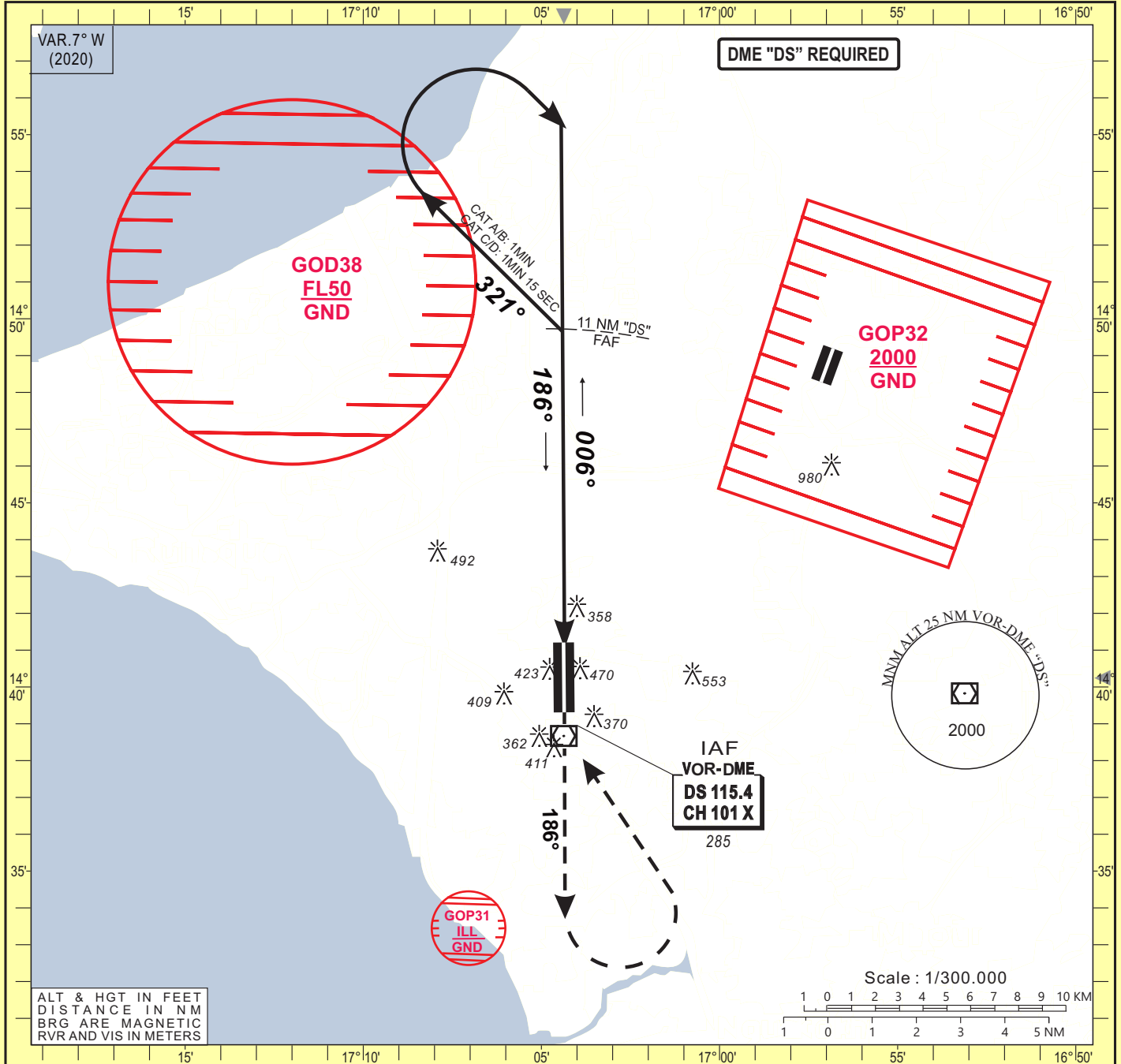
CAT	VOR-DME				Circling				RVR for take-off: CAT. A - B - C - D: 400
	OCA (OCH)	MDA	MDH	RVR ¹	RVR ²	OCA (OCH)	MDA	MDH	
A	657 (385)	660 (390)	900	1500	766 (476)	770 (480)	1500		
B	657 (385)	660 (390)	1000	1500	782 (492)	790 (500)	1600		
C	657 (385)	660 (390)	1000	1800	887 (597)	890 (600)	2400		
D	657 (385)	660 (390)	1400	2000	979 (689)	980 (690)	3600		

Notes:	Timing		FAF / THR	
	KT	MIN SEC	KT	MIN SEC
Notes: 1 With approach lights 2 Without approach lights 3 Daytime only. OCH and MDH AAL	90	5 Min 36	140	3 Min 36
	100	5 Min 02	150	3 Min 22
	110	4 Min 35	160	3 Min 09
	120	4 Min 12	170	2 Min 58
	130	3 Min 53	180	2 Min 48

INSTRUMENT APPROACH CHART
Categories A-B-C-D

ELEV : 290 DIASS APP : 120.5
THR : 251 DIASS TWR : 118.8
HEIGHT RELATED TO THR RWY 19 ELEVATION

Blaise DIAGNE / Intl (GOBD)
VOR Y RWY 19
IDENT VOR "DS" FREQ 115.4



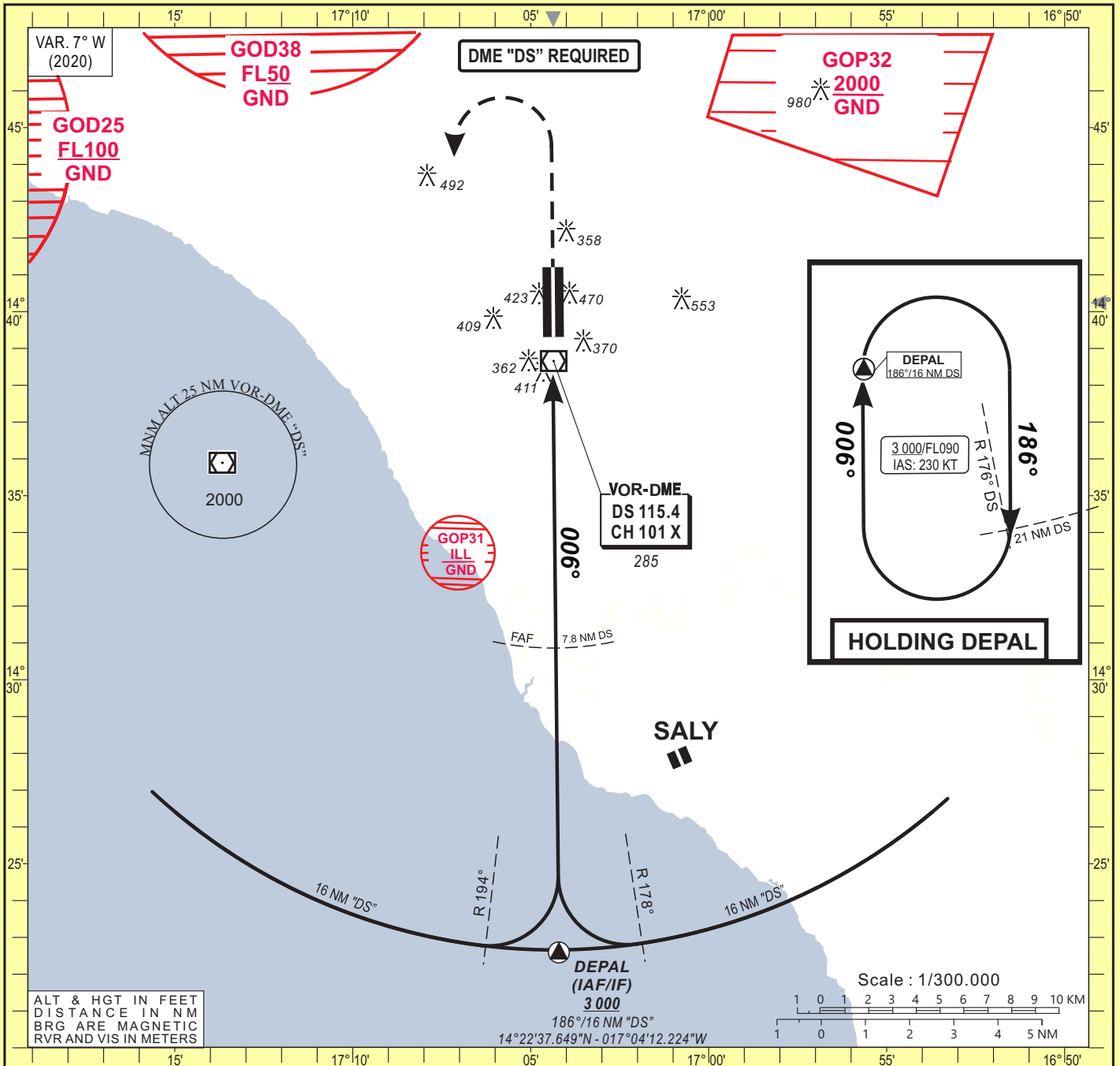
CAT	VOR-DME				Circling				RVR for take-off : CAT. A - B - C - D : 400	
	OCA (OCH)	MDA	MDH	RVR ¹	RVR ²	OCA (OCH)	MDA	MDH	VIS	Timing
A	620 (369)	620 (370)	1200	1500	766 (476)	770 (480)	1500			FAF / THR 8.5 NM
B	620 (369)	620 (370)	1300	1500	782 (492)	790 (500)	1600			KT MIN SEC KT MIN SEC
C	620 (369)	620 (370)	1400	1800	887 (597)	890 (600)	2400			90 5 Min 40 140 3 Min 39
D	620 (369)	620 (370)	1600	2000	979 (689)	980 (690)	3600			100 5 Min 06 150 3 Min 24
										110 4 Min 38 160 3 Min 11
										120 4 Min 15 170 3 Min 00
										130 3 Min 55 180 2 Min 50

Notes:
 1 With approach lights
 2 Without approach lights
 3 Daytime only. OCH and MDH AAL

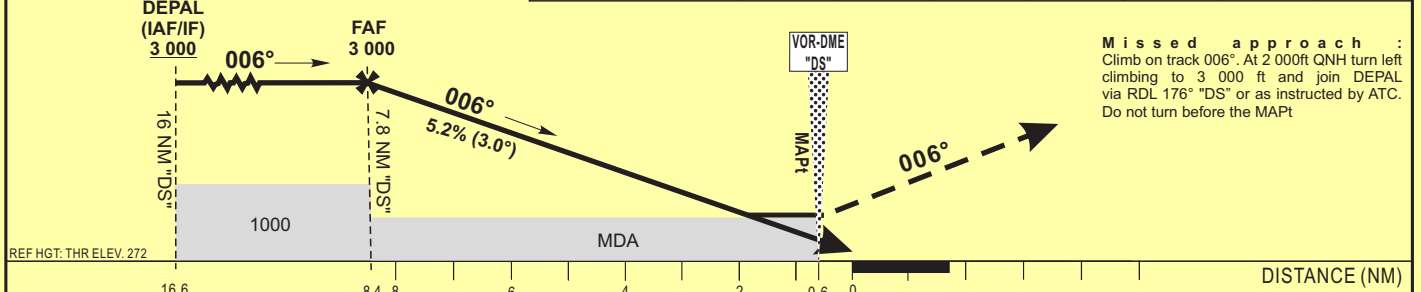
INSTRUMENT APPROACH CHART
Categories A-B-C-D

ELEV : 290 APP : 120.5
THR : 272 TWR : 118.8
HEIGHT RELATED TO THR RWY 01 ELEVATION

Blaise DIAGNE / Intl (GOBD)
VOR Z RWY 01
IDENT VOR "DS" FREQ 115.4



TRANSITION ALTITUDE: 3 500	Distance to DME "DS" (NM)	7	6	5	4	3	2
	Altitude (ft)	3 000	2 740	2 425	2 105	1 785	1 150



Missed approach :
Climb on track 006°. At 2 000ft QNH turn left climbing to 3 000 ft and join DEPAL via RDL 176° "DS" or as instructed by ATC. Do not turn before the MAPI

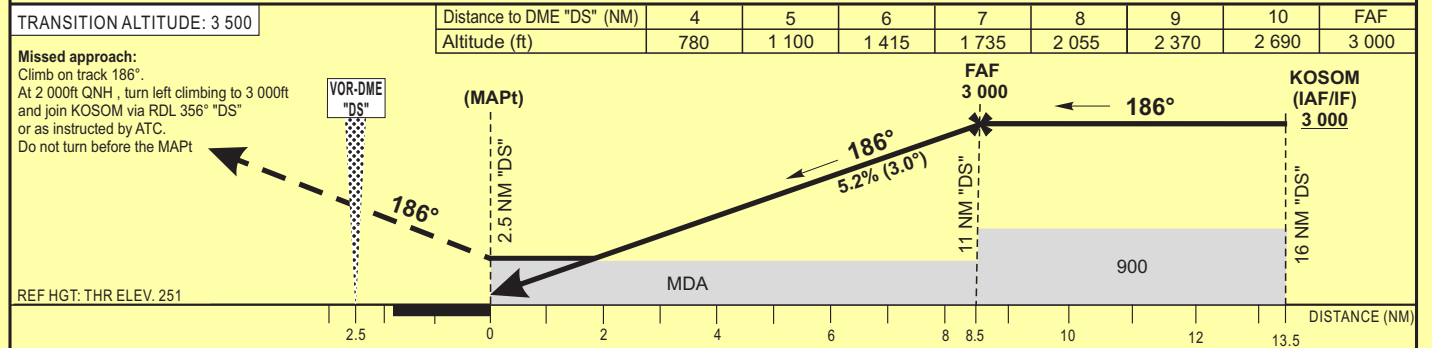
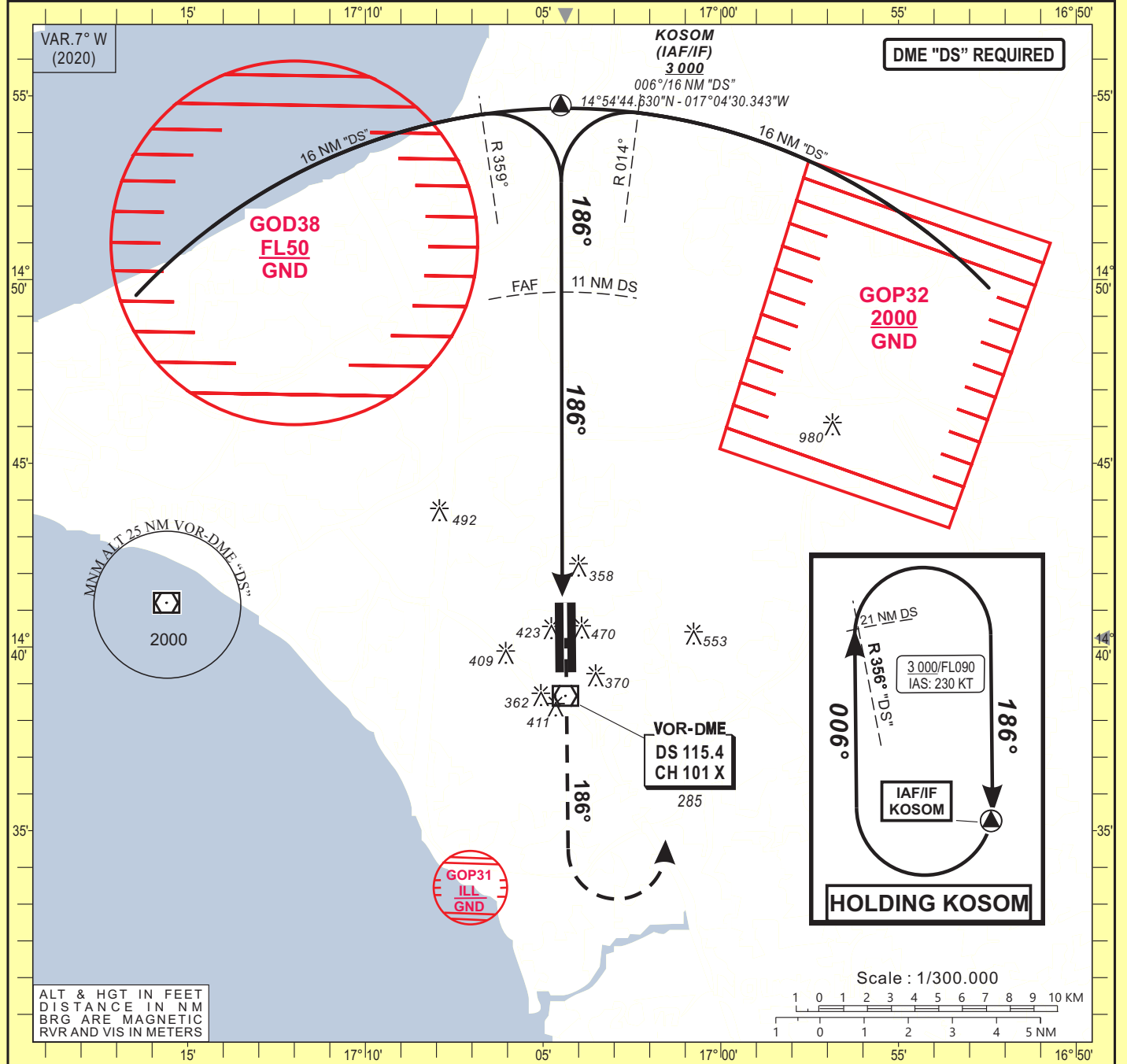
CAT	VOR-DME					Circling B				RVR for take-off: CAT. A - B - C - D: 400
	OCA (OCH)	MDA	MDH	RVR ¹	RVR ²	OCA (OCH)	MDA	MDH	VIS	
A	657 (385)	660	(390)	900	1500	766 (476)	770	(480)	1500	Timing FAF / THR 8.4 NM KT MIN SEC KT MIN SEC
B	657 (385)	660	(390)	1000	1500	782 (492)	790	(500)	1600	
C	657 (385)	660	(390)	1000	1800	887 (597)	890	(600)	2400	
D	657 (385)	660	(390)	1400	2000	979 (689)	980	(690)	3600	

- Notes:**
- 1** With approach lights
 - 2** Without approach lights
 - B** Daytime only. OCH and MDH AAL

INSTRUMENT APPROACH CHART
Categories A-B-C-D

ELEV : 290 DIASS APP : 120.5
THR : 251 DIASS TWR : 118.8
HEIGHT RELATED TO THR RWY 19 ELEVATION

Blaise DIAGNE / Intl (GOBD)
VOR Z RWY 19
IDENT VOR "DS" FREQ 115.4



CAT	VOR-DME				Circling				RVR for take-off : CAT. A - B - C - D : 400		
	OCA (OCH)	MDA MDH	RVR1	RVR2	OCA (OCH)	MDA MDH	VIS	KT	MIN SEC	KT	MIN SEC
A	620 (369)	620 (370)	1200	1500	766 (476)	770 (480)	1500				
B	620 (369)	620 (370)	1300	1500	782 (492)	790 (500)	1600				
C	620 (369)	620 (370)	1400	1800	887 (597)	890 (600)	2400				
D	620 (369)	620 (370)	1600	2000	979 (689)	980 (690)	3600				

Notes:

- 1** With approach lights
- 2** Without approach lights
- 3** Daytime only. OCH and MDH AAL

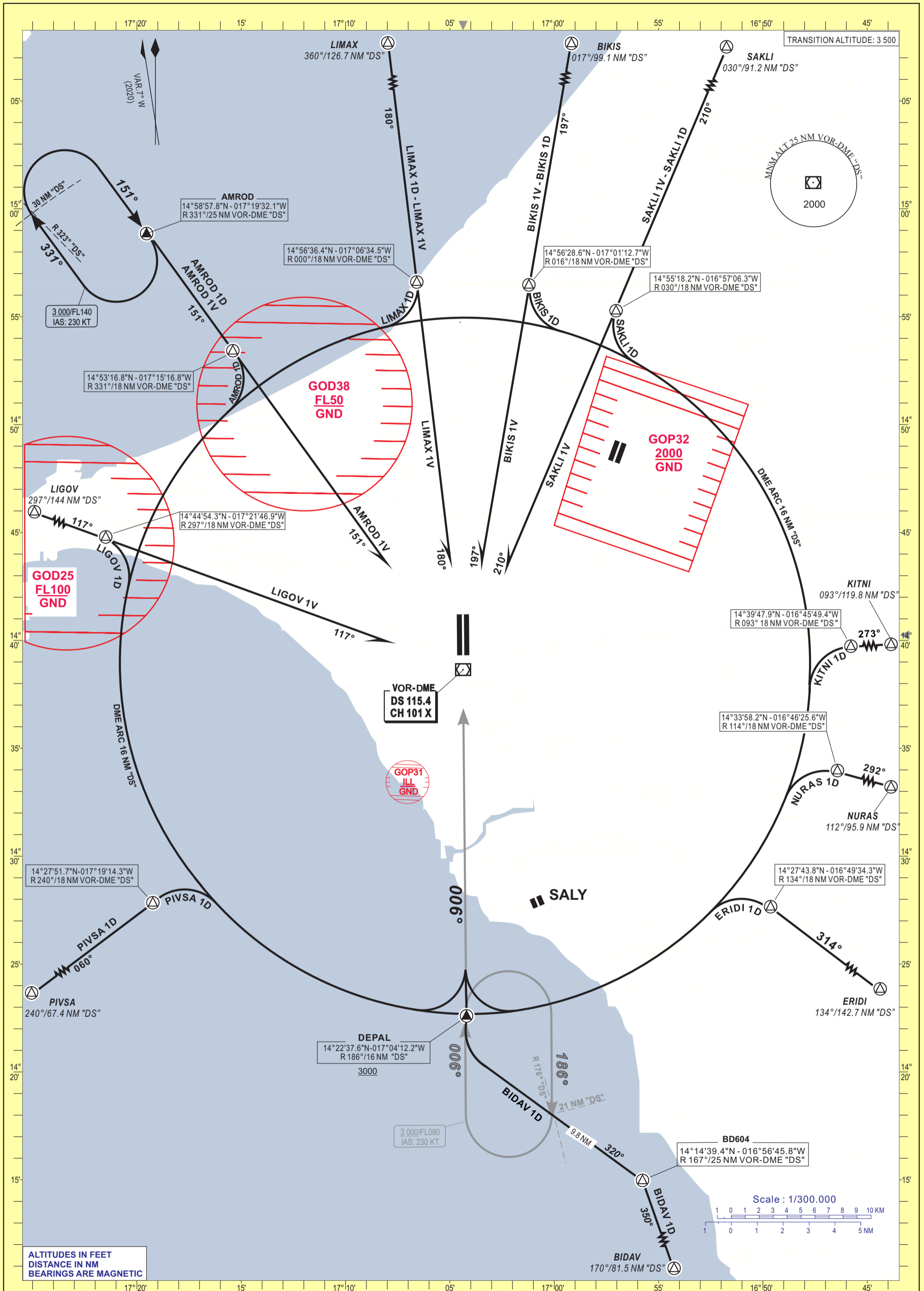
Timing		FAF / THR	
KT	MIN SEC	KT	MIN SEC
90	5 Min 40	140	3 Min 39
100	5 Min 06	150	3 Min 24
110	4 Min 38	160	3 Min 11
120	4 Min 15	170	3 Min 00
130	3 Min 55	180	2 Min 50

STANDARD ARRIVAL CHART - INSTRUMENT (STAR VOR-DME)

APP : 120.5
TWR : 118.8

RWY 01

PIVSA 1D-LIGOV 1V-LIGOV 1D-AMROD 1V-AMROD 1D-LIMAX 1V-LIMAX 1D
BIKIS 1V-BIKIS 1D-SAKLI 1V-SAKLI 1D-KITNI 1D-NURAS 1D-ERIDI 1D-BIDAV 1D



STANDARD ARRIVAL CHART - INSTRUMENT (STAR VOR-DME)

APP : 120.5
TWR : 118.8

Blaise DIAGNE / Intl (GOBD)
RWY 19

PIVSA 1V-PIVSA 1K-LIGOV 1K-AMROD 1K-LIMAX 1K-BIKIS 1K
SAKLI 1K-KITNI 1K-NURAS 1K-ERIDI 1V-ERIDI 1K-BIDAV 1V-BIDAV 1K

