

Phone : +(221) 76.026.88.15
 +(221) 33.957.49.37
Fax : +(221) 33.820.06.00
AFTN : GOOYNYX
E-mail : aim-goo@asecna.org
Web : <https://ais.asecna.aero>



AIRAC AIP SUP
NR 54/A/24GO
JUNE 13 , 2024

BUREAU NOTAM INTERNATIONAL DE L'OUEST AFRICAIN

B.P. 8155 Aéroport International Blaise DIAGNE Dakar/Diass-SENEGAL

BENIN – BURKINA FASO – COTE D'IVOIRE – GUINEE BISSAU – MALI – MAURITANIE – NIGER – SENEGAL – TOGO

MISE EN ŒUVRE DES NOUVELLES PROCEDURES DE VOL A L'AEROPORT DE SIKASSO

IMPLEMENTATION OF NEW FLIGHT PROCEDURES AT SIKASSO AIRPORT

GASO
/
MALI

Mise en vigueur/Effective Date	08 Aout 2024, <i>August 08, 2024</i>
Validité/Validity	PERM

INSTRUMENT APPROACH CHART

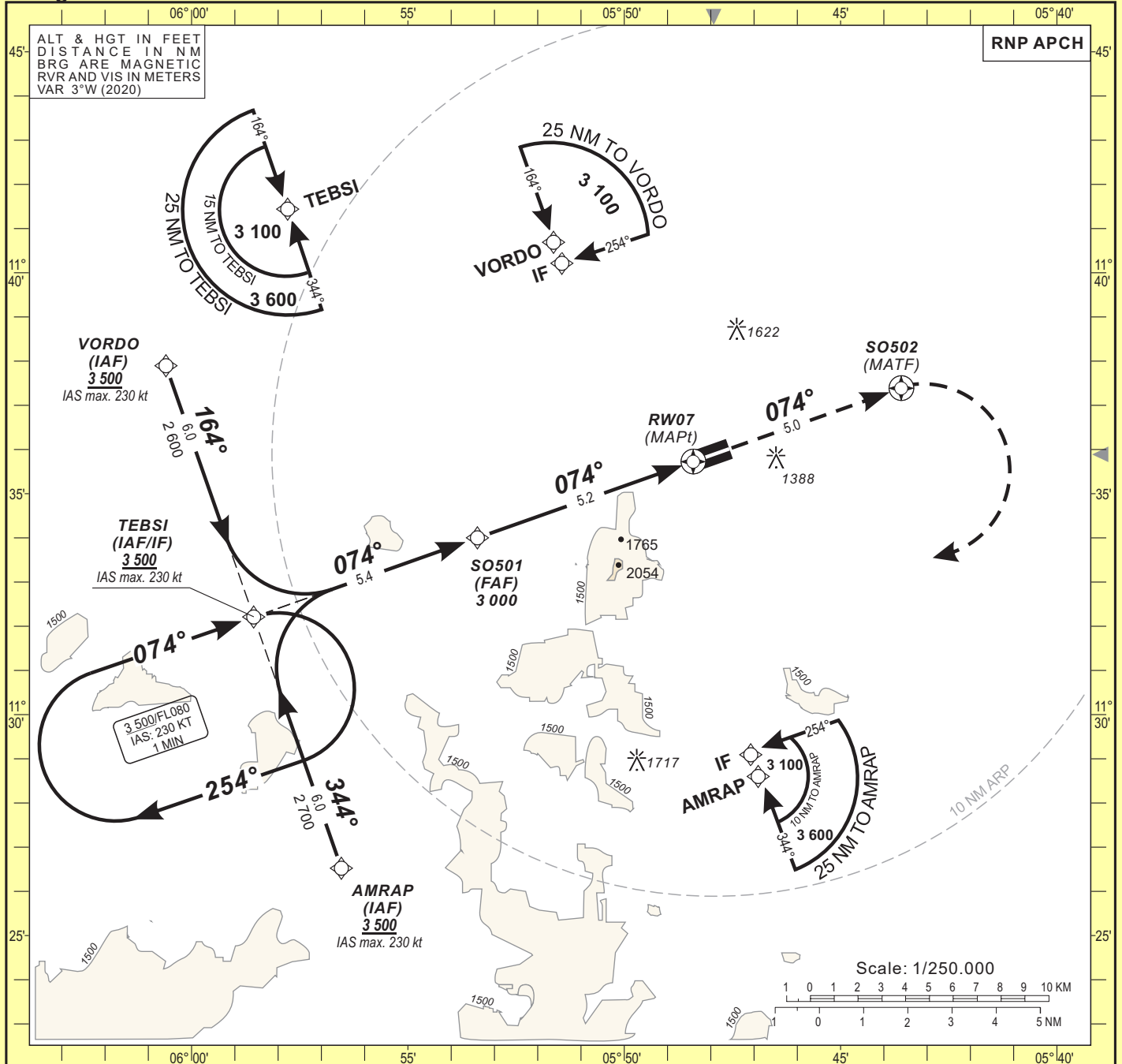
AERODROME ELEV: 1302
 THR RWY 07 ELEV: 1297
 HEIGHTS RELATED TO THR RWY 07 ELEV

SIKASSO (GASO)

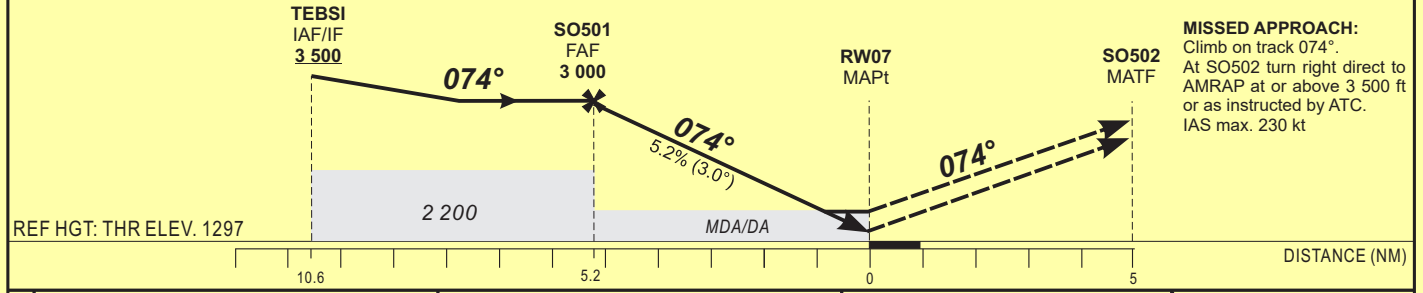
AFIS : Sikasso 118.1

RNP RWY 07

Categories **A-B-C**



TRANSITION ALTITUDE: 4 500	FAF	5	4	3	2	TO RW07 (NM)
	3 000	2 940	2 620	2 300	1 985	ALTITUDE (FT)



CAT	LNAV/VNAV				LNAV				CIRCLING 3				Timing	FAF / THR 5.2 NM
	OCA (OCH)	DA	DH	RVR ¹	RVR ²	OCA (OCH)	MDA	MDH	RVR ¹	RVR ²	OCA (OCH)	MDA		
A	1817 (520)	1820 (520)	900	1200	1939 (642)	1940 (650)	1500	1500	1949 (647)	1950 (650)	1500			
B	1829 (532)	1830 (540)	900	1200	1939 (642)	1940 (650)	1500	1500	2373 (1071)	2380 (1080)	1600			
C	1837 (540)	1840 (540)	900	1200	1939 (642)	1940 (650)	1800	2000	2497 (1195)	2500 (1200)	2400			
D	-	-	-	-	-	-	-	-	-	-	-			

Notes:

- 1** With approach lights
- 2** Without approach lights
- 3** Daytime only. OCH and MDH AAL

- Minimum temperature : 10° C
 - RDH: 15 m

KT	MIN	SEC	KT	MIN	SEC
90	3	Min 28	140	2	Min 14
100	3	Min 07	150	2	Min 05
110	2	Min 50	160	1	Min 57
120	2	Min 36	170		
130	2	Min 24	180		

TABULAR DESCRIPTION

RNP RWY 07

Serial Number	Path Descriptor	Waypoint Identifier	Fly-Over	Course °M(°T)	Magnetic Variation	Distance (NM)	Turn Direction	Altitude (ft)	Speed limit (Kt)	VPA/TCH (°/m)	Navigation Specification
010	IF	VORDO	—	—	—	—	—	+3500	-230	—	RNP APCH
020	TF	TEBSI	—	164(160.6)	—	6.0	—	+3500	-230	—	RNP APCH
010	IF	AMRAP	—	—	—	—	—	+3500	-230	—	RNP APCH
020	TF	TEBSI	—	344(340.6)	—	6.0	—	+3500	-230	—	RNP APCH
010	IF	TEBSI	—	—	—	—	—	+3500	-230	—	RNP APCH
020	TF	SO501	—	074(070.6)	—	5.4	—	@3000	—	—	RNP APCH
030	TF	RW07	Y	074(070.6)	—	5.2	—	@1347	—	3.0/15	RNP APCH
010	IF	RW07	—	—	—	—	—	—	—	—	RNP APCH
020	CF	SO502	Y	074(070.6)	—	5.0	—	—	-230	—	RNP APCH
030	DF	AMRAP	—	—	—	—	R	+3500	-230	—	RNP APCH
010	IF	TEBSI	—	—	—	—	—	+3500	-230	—	RNP APCH
020	HM	TEBSI	—	074(070.6)	—	—	R	+3500	-230	—	RNP APCH

WAYPOINT LIST
RNP RWY 07

Waypoint Identifier	Coordinates	
VORDO	11°37'53.687"N	006°00'35.501"W
TEBSI	11°32'12.528"N	005°58'33.847"W
AMRAP	11°26'31.353"N	005°56'32.274"W
SO501	11°34'00.017"N	005°53'23.601"W
SO502	11°37'23.421"N	005°43'35.597"W
RW07	11°35'43.691"N	005°48'24.048"W

INSTRUMENT APPROACH CHART

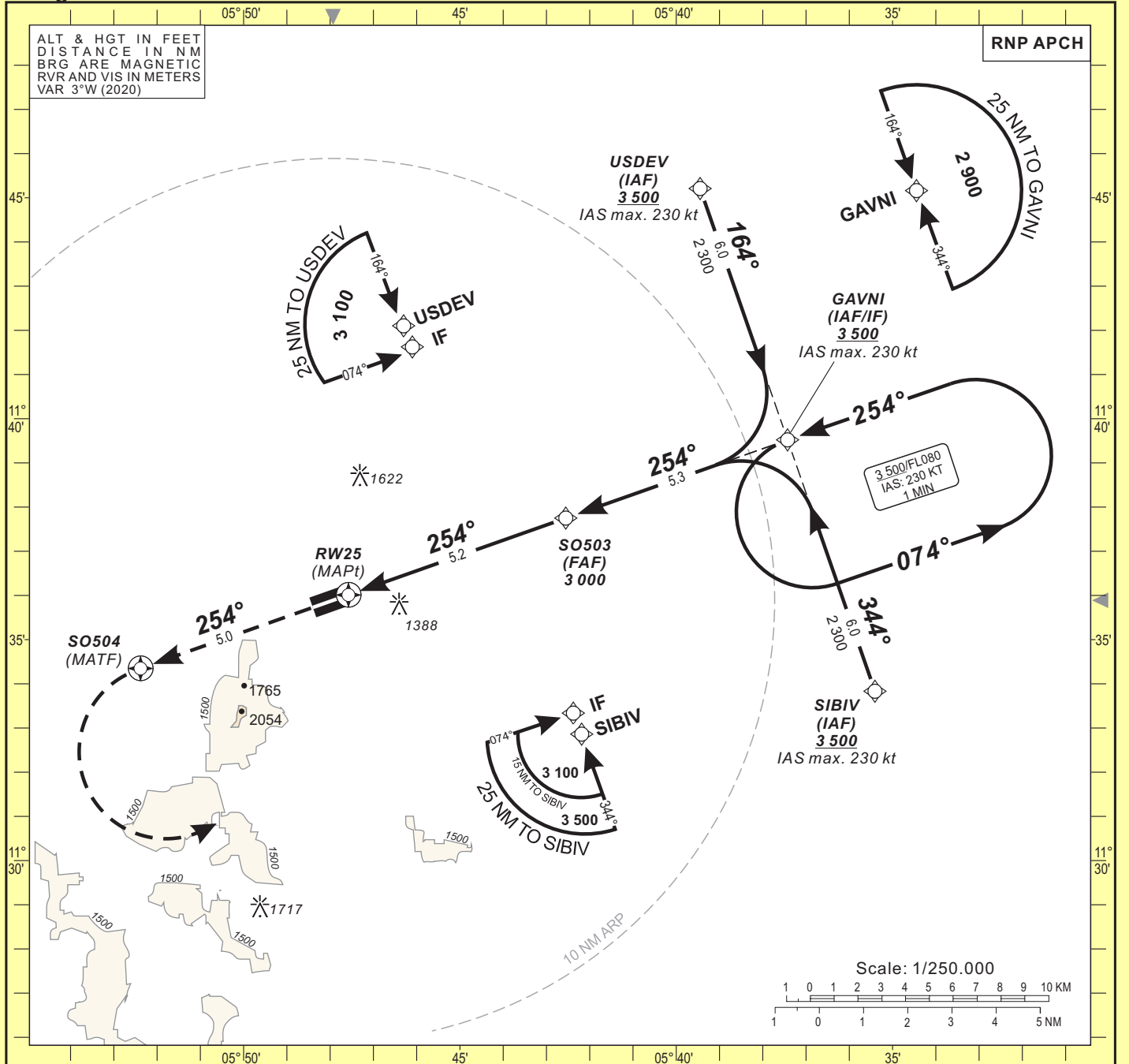
AERODROME ELEV: 1302
 THR RWY 25 ELEV: 1289
 HEIGHTS RELATED TO THR RWY 25 ELEV

AFIS : Sikasso 118.1

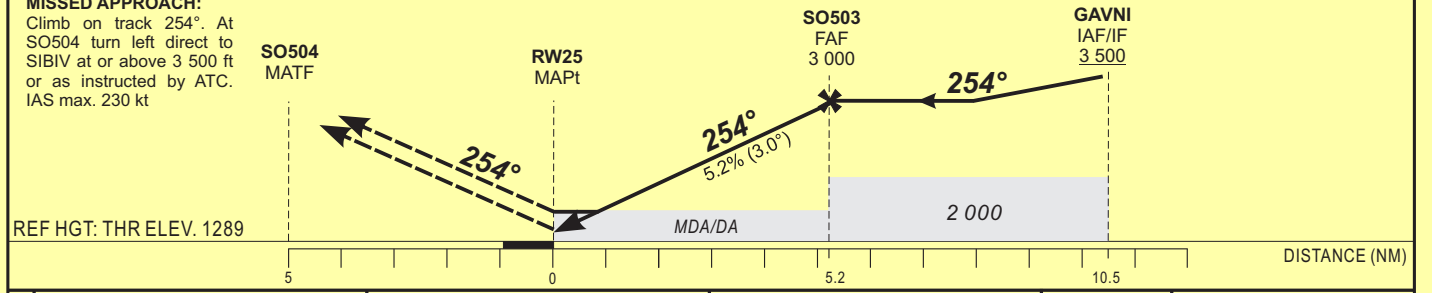
SIKASSO (GASO)

Categories **A-B-C**

RNP RWY 25



TRANSITION ALTITUDE: 4 500	TO RWY25 (NM)	2	3	4	5	FAF
	ALTITUDE (FT)	1 975	2 295	2 610	2 930	3 000



CAT	LNAV/VNAV				LNAV				CIRCLING 1				Timing	FAF / THR 5.2 NM		
	OCA (OCH)	DA	DH	RVR	OCA (OCH)	MDA	MDH	RVR	OCA (OCH)	MDA	MDH	VIS				
A	1644 (355)	1650 (360)	1200	1200	1844 (555)	1850 (560)	1500	1500	1949 (647)	1950 (650)	1500	1500	90	3 Min 28	140	2 Min 14
B	1656 (367)	1660 (370)	1200	1200	1844 (555)	1850 (560)	1500	1500	2373 (1071)	2380 (1080)	1600	1600	100	3 Min 07	150	2 Min 05
C	1675 (386)	1680 (390)	1200	1200	1844 (555)	1850 (560)	2000	2000	2497 (1195)	2500 (1200)	2400	2400	110	2 Min 50	160	1 Min 57
D	-	-	-	-	-	-	-	-	-	-	-	-	120	2 Min 36	170	-
													130	2 Min 24	180	-

Notes:

- RDH: 15 m
- Minimum temperature : 10° C
- **1** Daytime only. OCH and MDH AAL

TABULAR DESCRIPTION

RNP RWY 25

Serial Number	Path Descriptor	Waypoint Identifier	Fly-Over	Course °M(°T)	Magnetic Variation	Distance (NM)	Turn Direction	Altitude (ft)	Speed limit (Kt)	VPA/TCH (°/m)	Navigation Specification
010	IF	USDEV	—	—	—	—	—	+3500	-230	—	RNP APCH
020	TF	GAVNI	—	164(160.7)	—	6.0	—	+3500	-230	—	RNP APCH
010	IF	SIBIV	—	—	—	—	—	+3500	-230	—	RNP APCH
020	TF	GAVNI	—	344(340.7)	—	6.0	—	+3500	-230	—	RNP APCH
010	IF	GAVNI	—	—	—	—	—	+3500	-230	—	RNP APCH
020	TF	SO503	—	254(250.7)	—	5.3	—	@3000	—	—	RNP APCH
030	TF	RW25	Y	254(250.7)	—	5.2	—	@1339	—	3.0/15	RNP APCH
010	IF	RW25	—	—	—	—	—	—	—	—	RNP APCH
020	CF	SO504	Y	254(250.7)	—	5.0	—	—	-230	—	RNP APCH
030	DF	SIBIV	—	—	—	—	L	+3500	-230	—	RNP APCH
010	IF	GAVNI	—	—	—	—	—	+3500	-230	—	RNP APCH
020	HM	GAVNI	—	254(250.7)	—	—	L	+3500	-230	—	RNP APCH

WAYPOINT LIST

RNP RWY 25

Waypoint Identifier	Coordinates	
USDEV	11°45'12.503"N	005°39'26.878"W
GAVNI	11°39'31.200"N	005°37'25.598"W
SIBIV	11°33'49.880"N	005°35'24.401"W
SO503	11°37'44.994"N	005°42'33.163"W
SO504	11°34'21.123"N	005°52'22.641"W
RW25	11°36'00.920"N	005°47'34.237"W

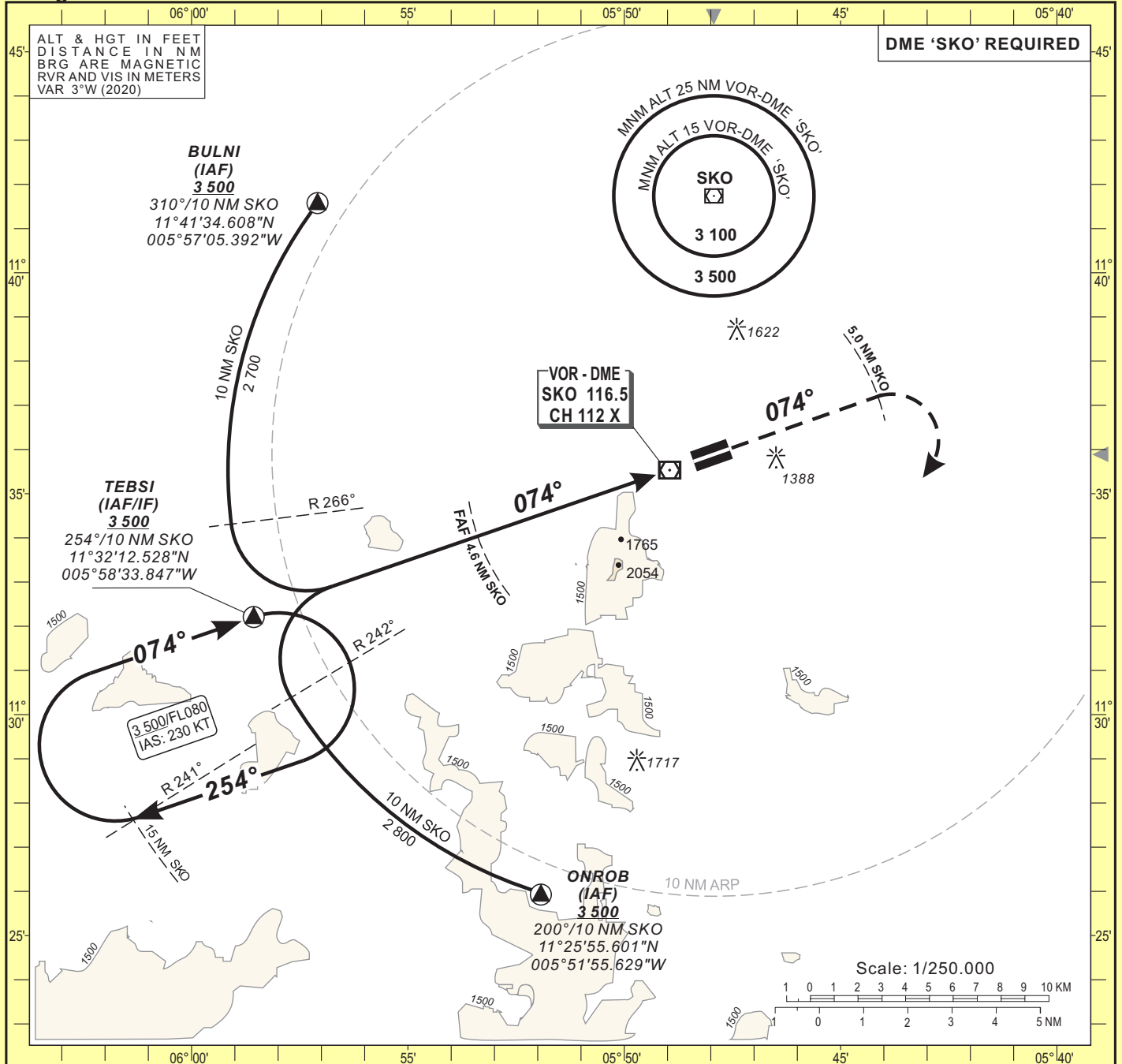
INSTRUMENT APPROACH CHART
Categories **A-B-C**

AERODROME ELEV: 1302
THR RWY 07 ELEV: 1297
HEIGHTS RELATED TO AERODROME ELEV

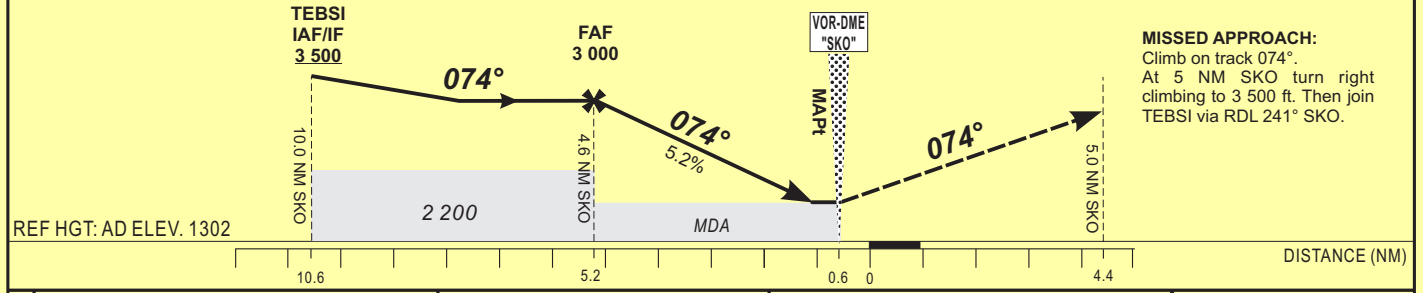
AFIS : Sikasso 118.1

SIKASSO (GASO)
VOR RWY 07

IDENT VOR « SKO » FREQ 116.5



TRANSITION ALTITUDE: 4 500	FAF	4	3	2	TO DME SKO (NM)
	3 000	2 815	2 500	2 180	ALTITUDE (FT)



CAT	VOR-DME				CIRCLING B				Timing	FAF / THR 5.2 NM	
	OCA (OCH)	MDA MDH	RVR 1	RVR 2	OCA (OCH)	MDA MDH	VIS				
A	1939 (637)	1940 (640)	1400	1500	1949 (647)	1950 (650)	1500	90	3 Min 28	140	2 Min 14
B	1939 (637)	1940 (640)	1500	1500	2373 (1071)	2380 (1080)	1600	100	3 Min 07	150	2 Min 05
C	1939 (637)	1940 (640)	1600	2000	2497 (1195)	2500 (1200)	2400	110	2 Min 50	160	1 Min 57
D	-	-	-	-	-	-	-	120	2 Min 36	170	-
								130	2 Min 24	180	-

Notes:

- 1** With approach lights
- 2** Without approach lights
- B** Daytime only. OCH and MDH AAL

INSTRUMENT APPROACH CHART

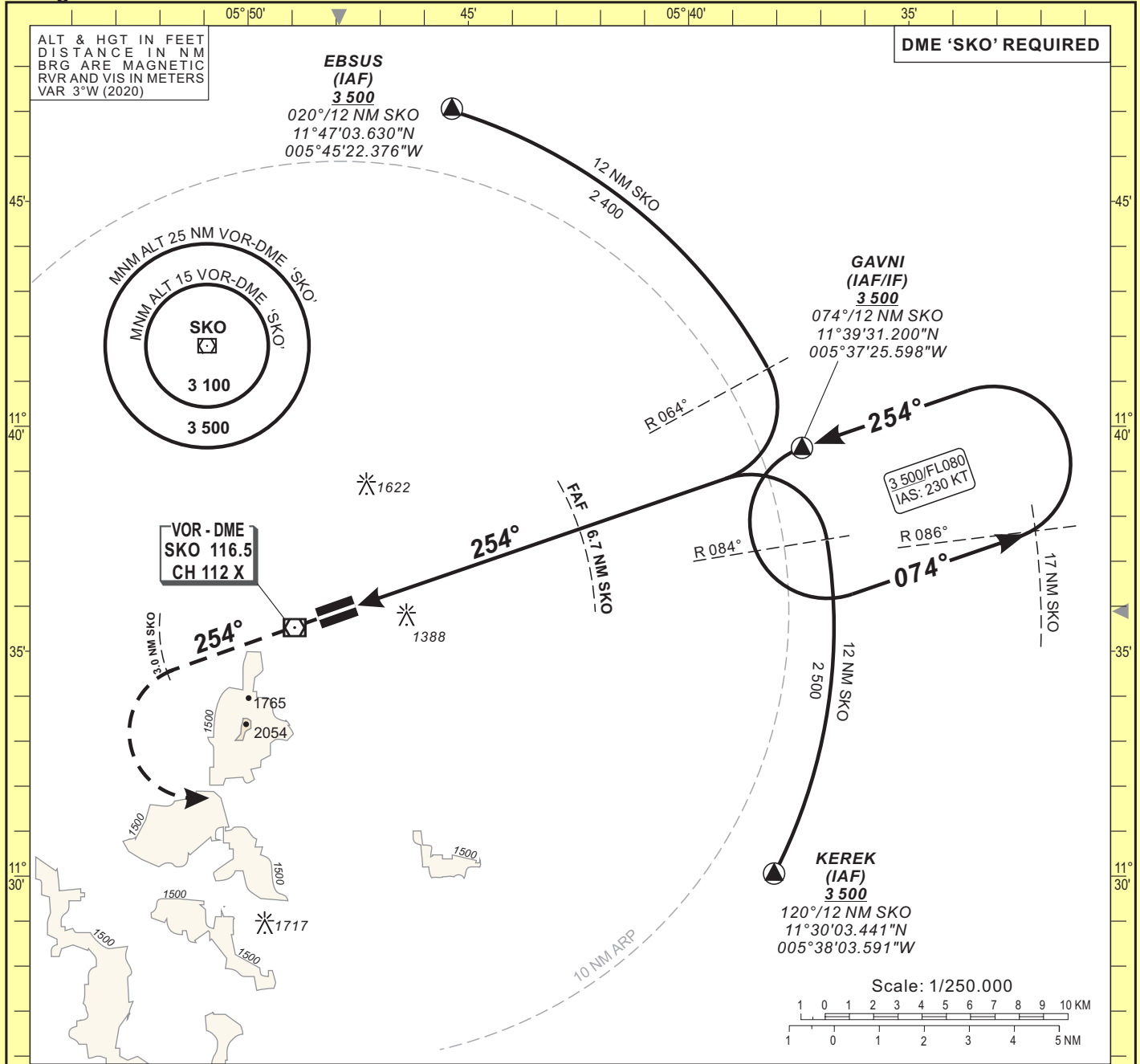
AERODROME ELEV: 1302
 THR RWY 25 ELEV: 1289
 HEIGHTS RELATED TO THR RWY 25 ELEV

AFIS : Sikasso 118.1

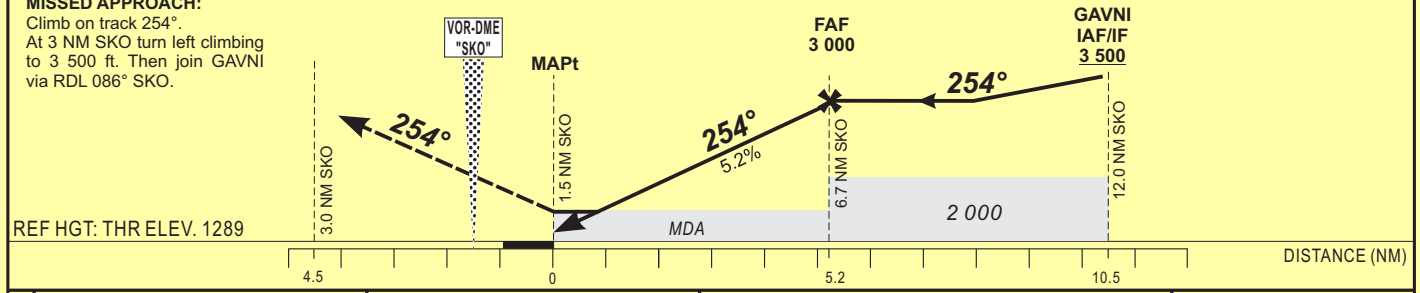
SIKASSO (GASO) VOR RWY 25

IDENT VOR « SKO » FREQ 116.5

Categories **A-B-C**



TRANSITION ALTITUDE: 4 500	TO DME SKO (NM)	3	4	5	6	FAF
	ALTITUDE (FT)	1 815	2 135	2 455	2 770	3 000



CAT	VOR-DME				CIRCLING 1				Timing	FAF / THR	
	OCA (OCH)	MDA MDH	RVR	OCA (OCH)	MDA MDH	VIS	KT	MIN SEC		KT	MIN SEC
A	1844 (555)	1850 (560)	1500	1949 (647)	1950 (650)	1500		90	3 Min 28	140	2 Min 14
B	1844 (555)	1850 (560)	1500	2373 (1071)	2380 (1080)	1600		100	3 Min 07	150	2 Min 05
C	1844 (555)	1850 (560)	2000	2497 (1195)	2500 (1200)	2400		110	2 Min 50	160	1 Min 57
D	-	-	-	-	-	-		120	2 Min 36	170	
								130	2 Min 24	180	

Notes:
1 Daytime only. OCH and MDH AAL