

Phone : +(221) 76.026.88.15
 +(221) 33.957.49.37
Fax : +(221) 33.820.06.00
AFTN : GOOYNYX
E-mail : aim-goo@asecna.org
Web : <https://ais.asecna.aero>



AIRAC AIP SUP
NR 53/A/24GO
JUNE 13 , 2024

BUREAU NOTAM INTERNATIONAL DE L'OUEST AFRICAIN

B.P. 8155 Aéroport International Blaise DIAGNE Dakar/Diass-SENEGAL

BENIN – BURKINA FASO – COTE D'IVOIRE – GUINEE BISSAU – MALI – MAURITANIE – NIGER – SENEGAL – TOGO

MISE EN ŒUVRE DES NOUVELLES PROCEDURES DE VOL A L'AEROPORT DE KAYES

IMPLEMENTATION OF NEW FLIGHT PROCEDURES AT KAYES AIRPORT

GAKD
/
MALI

Mise en vigueur/Effective Date	08 Aout 2024, <i>August 08, 2024</i>
Validité/Validity	PERM

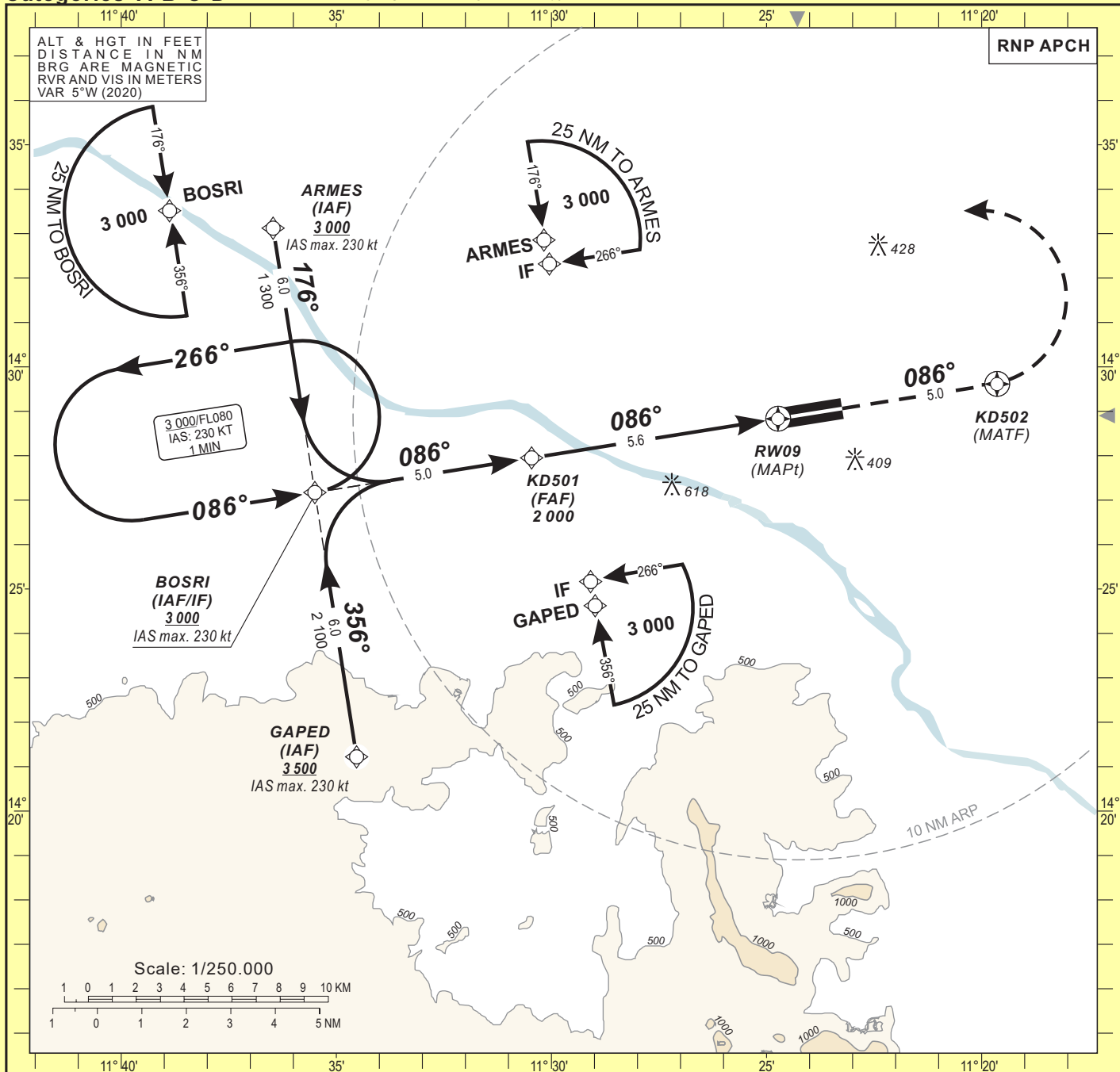
INSTRUMENT APPROACH CHART
Categories A-B-C-D

AERODROME ELEV: 168
THR RWY 09 ELEV: 158
HEIGHTS RELATED TO THR RWY 09 ELEV

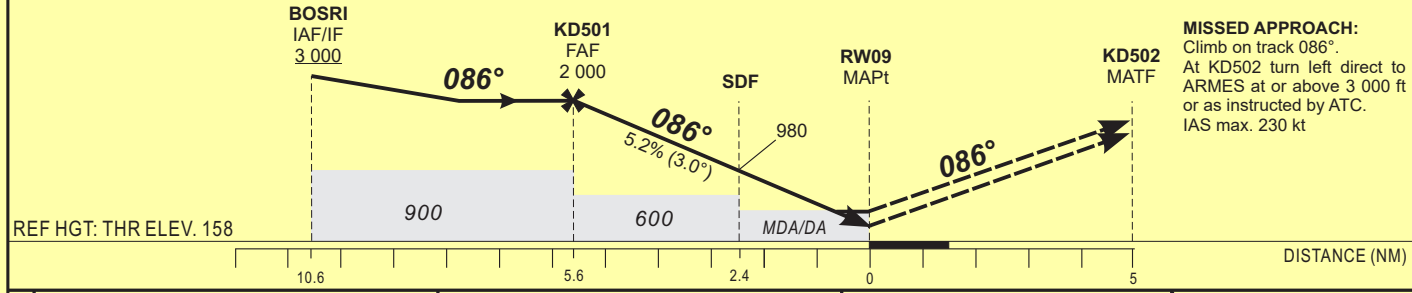
KAYES / Dag-Dag (GAKD)

TWR : Kayes 118.1

RNP RWY 09



TRANSITION ALTITUDE: 4 500	FAF	5	4	3	2	1	TO RWY09 (NM)
	2 000	1 800	1 480	1 165	845	525	ALTITUDE (FT)



CAT	LNAV/VNAV				LNAV				CIRCLING 3				Timing	FAF / THR 5.6 NM		
	OCA (OCH)	DA	DH	RVR ¹	RVR ²	OCA (OCH)	MDA	MDH	RVR ¹	RVR ²	OCA (OCH)	MDA			MDH	VIS
A	375 (217)	410 (250)	700	700	1000	505 (347)	510 (350)	1200	1500	704 (536)	710 (540)	1500	90	3 Min 44	140	2 Min 24
B	387 (229)	410 (250)	800	800	1200	505 (347)	510 (350)	1300	1500	704 (536)	710 (540)	1600	100	3 Min 22	150	2 Min 14
C	407 (249)	410 (250)	800	800	1200	505 (347)	510 (350)	1400	1800	1012 (844)	1020 (850)	2400	110	3 Min 03	160	2 Min 06
D	433 (275)	440 (280)	800	800	1200	505 (347)	510 (350)	1600	2000	1012 (844)	1020 (850)	3600	120	2 Min 48	170	1 Min 59
													130	2 Min 35	180	1 Min 52

Notes:

- 1** With approach lights
- 2** Without approach lights
- 3** Daytime only. OCH and MDH AAL

- Minimum temperature : 10° C
- RDH: 15 m

TABULAR DESCRIPTION

RNP RWY 09

Serial Number	Path Descriptor	Waypoint Identifier	Fly-Over	Course °M(°T)	Magnetic Variation	Distance (NM)	Turn Direction	Altitude (ft)	Speed limit (Kt)	VPA/TCH (°/m)	Navigation Specification
010	IF	ARMES	—	—	—	—	—	+3000	-230	—	RNP APCH
020	TF	BOSRI	—	176(171.0)	—	6.0	—	+3000	-230	—	RNP APCH
010	IF	GAPED	—	—	—	—	—	+3500	-230	—	RNP APCH
020	TF	BOSRI	—	356(351.0)	—	6.0	—	+3000	-230	—	RNP APCH
010	IF	BOSRI	—	—	—	—	—	+3000	-230	—	RNP APCH
020	TF	KD501	—	086(081.0)	—	5.0	—	@2000	—	—	RNP APCH
030	TF	RW09	Y	086(081.0)	—	5.6	—	@208	—	3.0/15	RNP APCH
010	IF	RW09	—	—	—	—	—	—	—	—	RNP APCH
020	CF	KD502	Y	086(081.0)	—	5.0	—	—	-230	—	RNP APCH
030	DF	ARMES	—	—	—	—	L	+3000	-230	—	RNP APCH
010	IF	BOSRI	—	—	—	—	—	+3000	-230	—	RNP APCH
020	HM	BOSRI	—	086(081.0)	—	—	L	+3000	-230	—	RNP APCH

WAYPOINT LIST
RNP RWY 09

Waypoint Identifier	Coordinates	
ARMES	14°33'07.308"N	011°36'28.163"W
GAPED	14°21'13.166"N	011°34'31.720"W
BOSRI	14°27'10.240"N	011°35'29.915"W
KD501	14°27'56.993"N	011°30'27.597"W
KD502	14°29'37.028"N	011°19'38.259"W
RW09	14°28'50.037"N	011°24'43.707"W

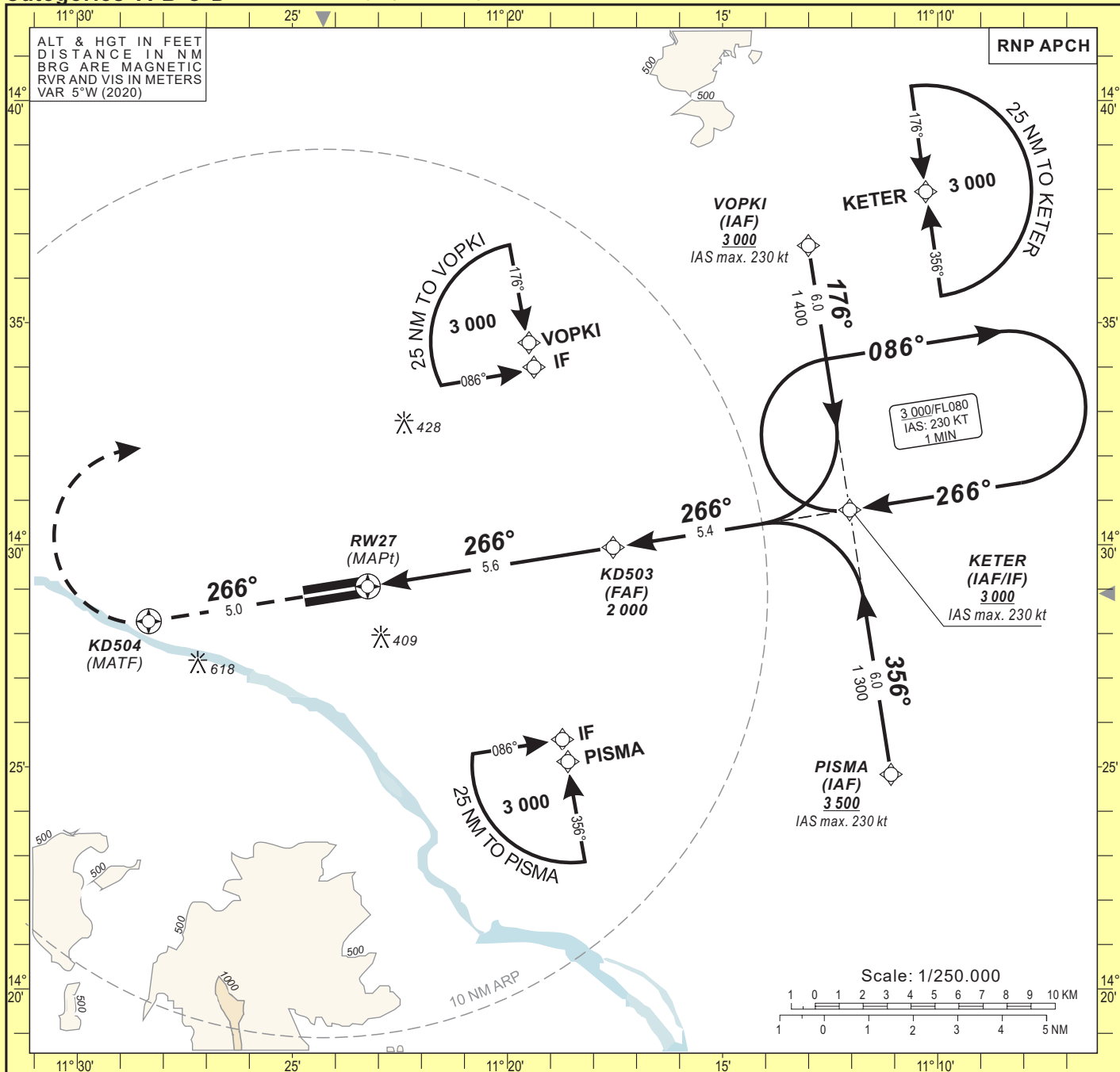
INSTRUMENT APPROACH CHART
Categories A-B-C-D

AERODROME ELEV: 168
THR RWY 27 ELEV: 168
HEIGHTS RELATED TO THR RWY 27 ELEV

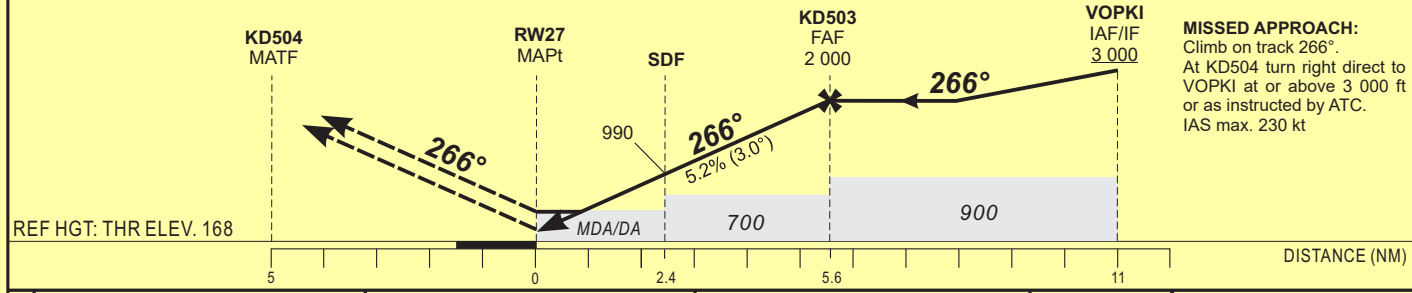
KAYES / Dag-Dag (GAKD)

TWR : Kayes 118.1

RNP RWY 27



TRANSITION ALTITUDE: 4 500	TO RW27 (NM)	1	2	3	4	5	FAF
	ALTITUDE (FT)	540	855	1 175	1 490	1 810	2 000



CAT	LNAV/VNAV				LNAV			CIRCLING 1			VIS	Timing	FAF / THR 5.6 NM			
	OCA (OCH)	DA	DH	RVR	OCA (OCH)	MDA	MDH	RVR	OCA (OCH)	MDA				MDH		
A	406 (238)	420 (250)		1000	522 (354)	530 (360)		1500	704 (536)	710 (540)		1500	90	3 Min 44	140	2 Min 24
B	418 (250)	420 (250)		1000	522 (354)	530 (360)		1500	704 (536)	710 (540)		1600	100	3 Min 22	150	2 Min 14
C	426 (258)	430 (260)		1200	522 (354)	530 (360)		1800	1012 (844)	1020 (850)		2400	110	3 Min 03	160	2 Min 06
D	437 (269)	440 (270)		1200	522 (354)	530 (360)		2000	1012 (844)	1020 (850)		3600	120	2 Min 48	170	1 Min 59
													130	2 Min 35	180	1 Min 52

Notes: - RDH: 15 m
- Minimum temperature : 10° C
- **1** Daytime only. OCH and MDH AAL

TABULAR DESCRIPTION

RNP RWY 27

Serial Number	Path Descriptor	Waypoint Identifier	Fly-Over	Course °M(°T)	Magnetic Variation	Distance (NM)	Turn Direction	Altitude (ft)	Speed limit (Kt)	VPA/TCH (°/m)	Navigation Specification
010	IF	VOPKI	—	—	—	—	—	+3000	-230	—	RNP APCH
020	TF	KETER	—	176(171.1)	—	6.0	—	+3000	-230	—	RNP APCH
010	IF	PISMA	—	—	—	—	—	+3500	-230	—	RNP APCH
020	TF	KETER	—	356(351.1)	—	6.0	—	+3000	-230	—	RNP APCH
010	IF	KETER	—	—	—	—	—	+3000	-230	—	RNP APCH
020	TF	KD503	—	266(261.1)	—	5.4	—	@2000	—	—	RNP APCH
030	TF	RW27	Y	266(261.1)	—	5.6	—	@218	—	3.0/15	RNP APCH
010	IF	RW27	—	—	—	—	—	—	—	—	RNP APCH
020	CF	KD504	Y	266(261.1)	—	5.0	—	—	-230	—	RNP APCH
030	DF	VOPKI	—	—	—	—	R	+3000	-230	—	RNP APCH
010	IF	KETER	—	—	—	—	—	+3000	-230	—	RNP APCH
020	HM	KETER	—	266(261.1)	—	—	R	+3000	-230	—	RNP APCH

WAYPOINT LIST

RNP RWY 27

Waypoint Identifier	Coordinates	
VOPKI	14°36'44.063"N	011°13'00.318"W
PISMA	14°24'49.732"N	011°11'05.095"W
KETER	14°30'46.901"N	011°12'02.681"W
KD503	14°29'56.323"N	011°17'32.620"W
KD504	14°28'16.681"N	011°28'20.071"W
RW27	14°29'03.750"N	011°23'14.649"W

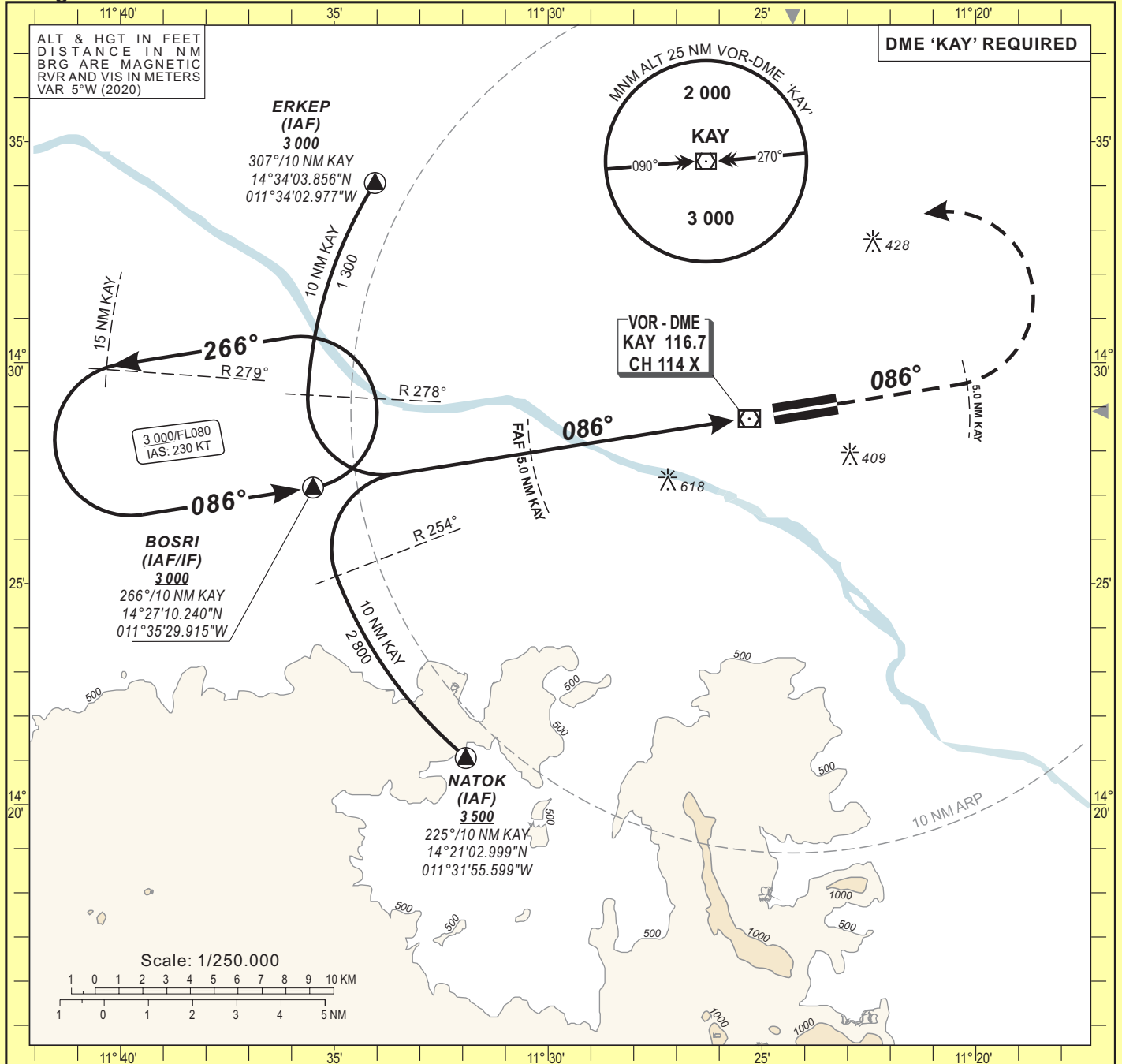
INSTRUMENT APPROACH CHART
Categories A-B-C-D

AERODROME ELEV: 168
THR RWY 09 ELEV: 158
HEIGHTS RELATED TO THR RWY 09 ELEV

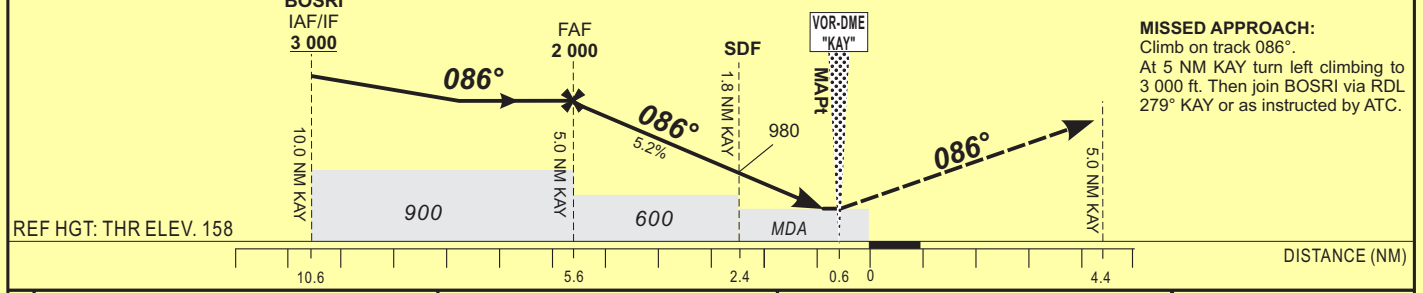
TWR : Kayes 118.1

KAYES Dag-Dag (GAKD) VOR RWY 09

IDENT VOR « KAY » FREQ 116.7



TRANSITION ALTITUDE: 4 500	FAF	4	3	2	1	TO DME KAY(NM)
	2 000	1 675	1 355	1 035	720	ALTITUDE (FT)



CAT	VOR-DME				CIRCLING 3				Timing	FAF / THR 5.6 NM		
	OCA (OCH)	MDA MDH	RVR 1	RVR 2	OCA (OCH)	MDA MDH	VIS	KT			MIN SEC	KT
A	519 (361)	520 (370)	1200	1500	704 (536)	710 (540)	1500		90	3 Min 44	140	2 Min 24
B	519 (361)	520 (370)	1300	1500	704 (536)	710 (540)	1600		100	3 Min 22	150	2 Min 14
C	519 (361)	520 (370)	1400	1800	1012 (844)	1020 (850)	2400		110	3 Min 03	160	2 Min 06
D	519 (361)	520 (370)	1600	2000	1012 (844)	1020 (850)	3600		120	2 Min 48	170	1 Min 59
									130	2 Min 35	180	1 Min 52

Notes:

- 1** With approach lights
- 2** Without approach lights
- 3** Daytime only. OCH and MDH AAL

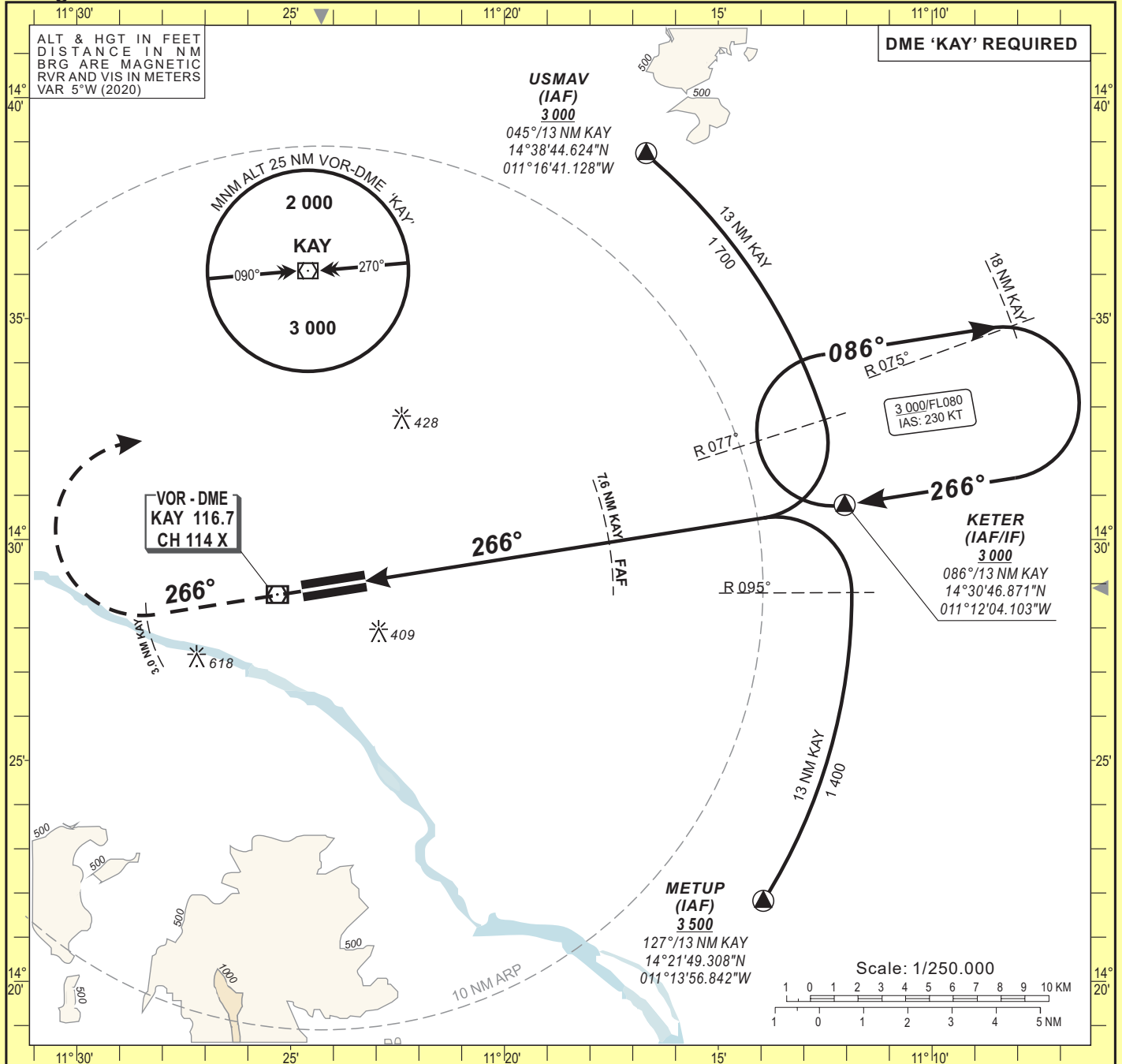
INSTRUMENT APPROACH CHART
Categories A-B-C-D

AERODROME ELEV: 168
THR RWY 27 ELEV: 168
HEIGHTS RELATED TO AD ELEV

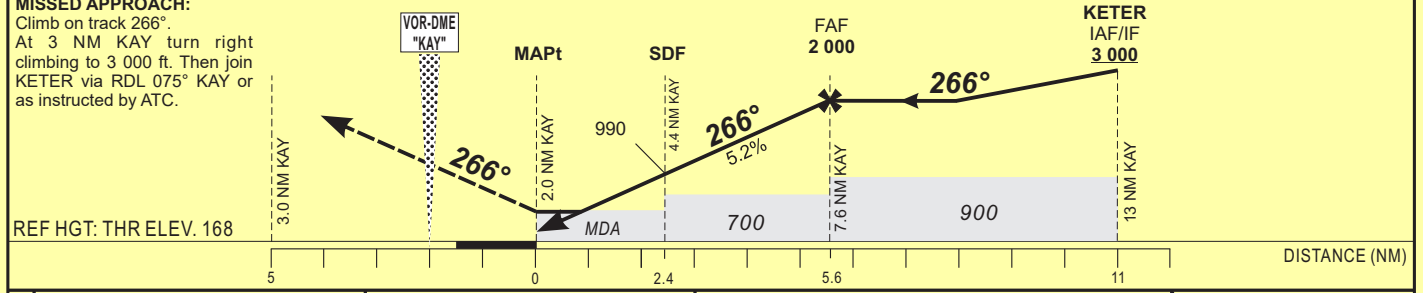
TWR : Kayes 118.1

KAYES Dag-Dag (GAKD) VOR RWY 27

IDENT VOR « KAY » FREQ 116.7



TRANSITION ALTITUDE: 4 500	TO DME KAY (NM)	1	2	3	4	5	FAF
	ALTITUDE (FT)	540	855	1 175	1 490	1 810	2 000



CAT	VOR-DME				CIRCLING 1				Timing	FAF / THR			
	OCA (OCH)	MDA MDH	RVR	OCA (OCH)	MDA MDH	VIS	KT	MIN		SEC	MIN	SEC	
A	535 (367)	540 (370)	1500	704 (536)	710 (540)	1500		90	3	44	140	2	24
B	535 (367)	540 (370)	1500	704 (536)	710 (540)	1600		100	3	22	150	2	14
C	535 (367)	540 (370)	1800	1012 (844)	1020 (850)	2400		110	3	03	160	2	06
D	535 (367)	540 (370)	2000	1012 (844)	1020 (850)	3600		120	2	48	170	1	59
								130	2	35	180	1	52

Notes:
1 Daytime only. OCH and MDH AAL