

Phone : +(221) 76.026.88.15  
          +(221) 33.957.49.37  
Fax :    +(221) 33.820.06.00  
AFTN :   GOOYNYX  
E-mail : aim-gooo@asecna.org  
Web :    <https:ais.asecna.aero>



**AIRAC AIP SUP**  
**NR 43/A/24GO**  
**MAY 16 , 2024**

**BUREAU NOTAM INTERNATIONAL DE L'OUEST AFRICAIN**

**B.P. 8155 Aéroport International Blaise DIAGNE Dakar/Diass-SENEGAL**

**BENIN – BURKINA FASO – COTE D'IVOIRE – GUINEE BISSAU – MALI – MAURITANIE – NIGER – SENEGAL – TOGO**

**MISE EN ŒUVRE DES PROCEDURES DE VOL CCO/CDO ET DES PROCEDURES DE VOL  
REVISEES DE L'AEROPORT INTERNATIONAL BLAISE DIAGNE DE DAKAR DIASS**

**IMPLEMENTATION OF CCO/CDO FLIGHT PROCEDURES AND REVISED FLIGHT  
PROCEDURES OF BLAISE DIAGNE INTERNATIONAL AIRPORT OF DAKAR DIASS**

/  
**GOBD**

<b>Mise en vigueur/Effective Date</b>	11 Juillet 2024, <i>July 11 2024</i>
<b>Validité/Validity</b>	PERM

**FIN/END**



STANDARD DEPARTURE CHART  
INSTRUMENT (SID)  
Categories A-B-C-D

APP 120.5  
TWR 118.8

Blaise DIAGNE / Intl (GOBD)  
RWY 01

LIGOV 1B, LIMAX 1B, BIKIS 1B, SAKLI 1B, NURAS 1B, ERIDI 1B, BIDAV 1B,

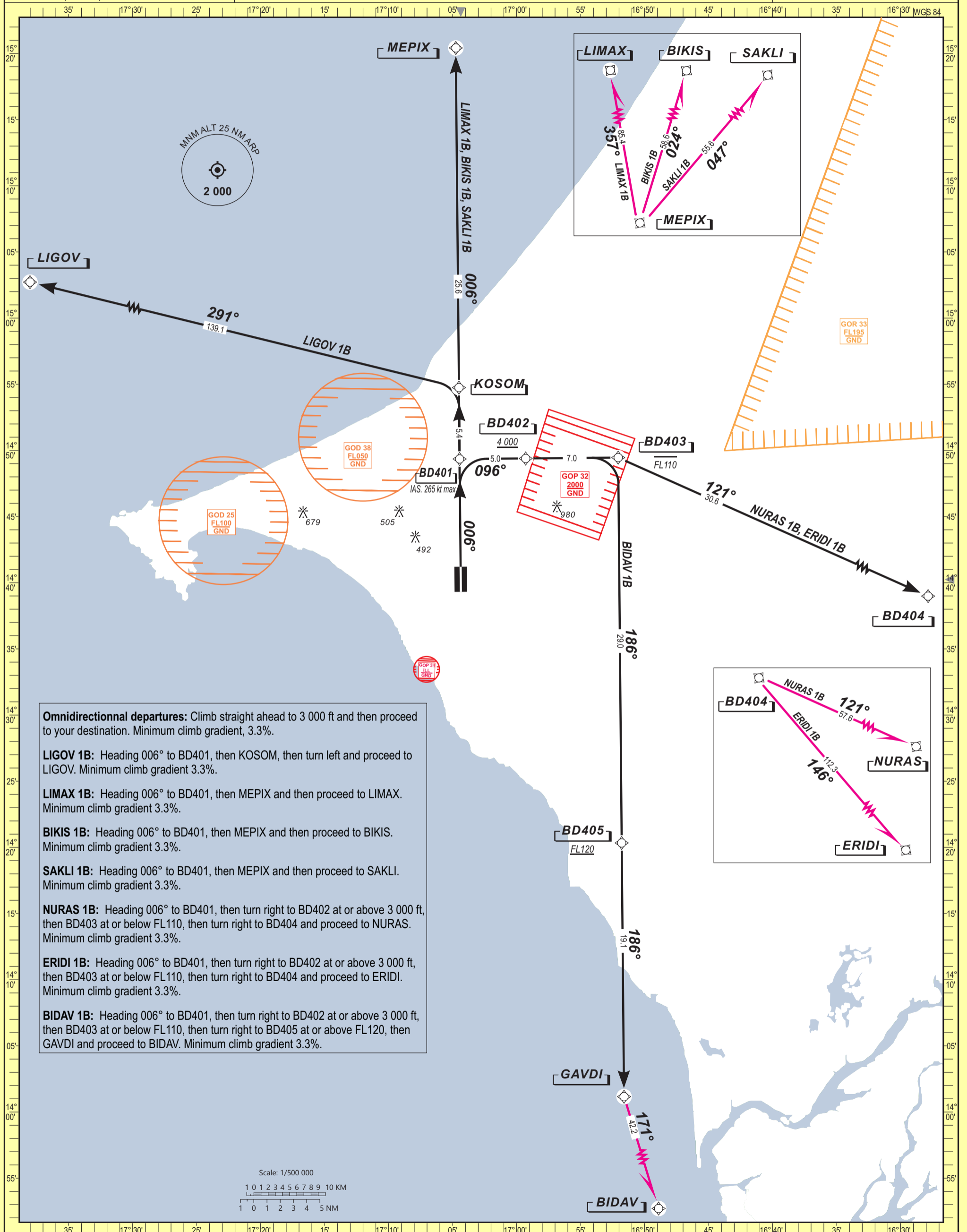
ELEV. & ALT IN FEET  
DISTANCE IN NM  
BRG ARE MAGNETIC  
VAR 7°W(2020)

Notes:

CONTINUOUS CLIMB OPERATIONS (CCO)

TRANSITION ALTITUDE: 3 500

RNP 1



**Omnidirectional departures:** Climb straight ahead to 3 000 ft and then proceed to your destination. Minimum climb gradient, 3.3%.

**LIGOV 1B:** Heading 006° to BD401, then KOSOM, then turn left and proceed to LIGOV. Minimum climb gradient 3.3%.

**LIMAX 1B:** Heading 006° to BD401, then MEPIX and then proceed to LIMAX. Minimum climb gradient 3.3%.

**BIKIS 1B:** Heading 006° to BD401, then MEPIX and then proceed to BIKIS. Minimum climb gradient 3.3%.

**SAKLI 1B:** Heading 006° to BD401, then MEPIX and then proceed to SAKLI. Minimum climb gradient 3.3%.

**NURAS 1B:** Heading 006° to BD401, then turn right to BD402 at or above 3 000 ft, then BD403 at or below FL110, then turn right to BD404 and proceed to NURAS. Minimum climb gradient 3.3%.

**ERIDI 1B:** Heading 006° to BD401, then turn right to BD402 at or above 3 000 ft, then BD403 at or below FL110, then turn right to BD404 and proceed to ERIDI. Minimum climb gradient 3.3%.

**BIDAV 1B:** Heading 006° to BD401, then turn right to BD402 at or above 3 000 ft, then BD403 at or below FL110, then turn right to BD405 at or above FL120, then GAVDI and proceed to BIDAV. Minimum climb gradient 3.3%.



### TABULAR DESCRIPTION

Serial Number	Path Descriptor	Waypoint Ident.	Fly Over	Course °M (T)	Magnetic Variation	Distance (NM)	Turn Direction	Altitude (ft)	Speed Limit (kt)	NAV. Spec.
<b>LIGOV 1B</b>										
010	CF	BD401	-	006 (359.4)	-	-	-	-	-265	RNP 1
020	TF	KOSOM	-	006 (359.4)	-	5.4	-	-	-	RNP 1
030	TF	LIGOV	-	291 (284.1)	-	139.1	L	-	-	RNP 1
<b>LIMAX 1B</b>										
010	CF	BD401	-	006 (359.4)	-	-	-	-	-265	RNP 1
020	TF	KOSOM	-	006 (359.4)	-	5.4	-	-	-	RNP 1
030	TF	MEPIX	-	006 (359.4)	-	25.6	-	-	-	RNP 1
040	TF	LIMAX	-	357 (350.1)	-	85.4	L	-	-	RNP 1
<b>BIKIS 1B</b>										
010	CF	BD401	-	006 (359.4)	-	-	-	-	-265	RNP 1
020	TF	KOSOM	-	006 (359.4)	-	5.4	-	-	-	RNP 1
030	TF	MEPIX	-	006 (359.4)	-	25.6	-	-	-	RNP 1
040	TF	BIKIS	-	024 (017.0)	-	58.6	R	-	-	RNP 1
<b>SAKLI 1B</b>										
010	CF	BD401	-	006 (359.4)	-	-	-	-	-265	RNP 1
020	TF	KOSOM	-	006 (359.4)	-	5.4	-	-	-	RNP 1
030	TF	MEPIX	-	006 (359.4)	-	25.6	-	-	-	RNP 1
040	TF	SAKLI	-	047 (040.3)	-	55.6	R	-	-	RNP 1
<b>NURAS 1B</b>										
010	CF	BD401	-	006 (359.4)	-	-	-	-	-265	RNP 1
020	TF	BD402	-	096 (089.4)	-	5.0	R	+4000	-	RNP 1
030	TF	BD403	-	096 (089.4)	-	7.0	-	-FL110	-	RNP 1
040	TF	BD404	-	121 (113.9)	-	30.6	R	-	-	RNP 1
050	TF	NURAS	-	121 (113.9)	-	57.6	-	-	-	RNP 1
<b>ERIDI 1B</b>										
010	CF	BD401	-	006 (359.4)	-	-	-	-	-265	RNP 1
020	TF	BD402	-	096 (089.4)	-	5.0	R	+4000	-	RNP 1
030	TF	BD403	-	096 (089.4)	-	7.0	-	-FL110	-	RNP 1
040	TF	BD404	-	121 (113.9)	-	30.6	R	-	-	RNP 1
050	TF	ERIDI	-	146 (139.1)	-	112.3	R	-	-	RNP 1
<b>BIDAV 1B</b>										
010	CF	BD401	-	006 (359.4)	-	-	-	-	-265	RNP 1
020	TF	BD402	-	096 (089.4)	-	5.0	R	+4000	-	RNP 1
030	TF	BD403	-	096 (089.4)	-	7.0	-	-FL110	-	RNP 1
040	TF	BD405	-	186 (179.4)	-	29.0	R	+FL120	-	RNP 1
050	TF	GAVDI	-	186 (179.4)	-	19.1	-	-	-	RNP 1
060	TF	BIDAV	-	171 (163.8)	-	42.2	L	-	-	RNP 1

### WAYPOINTS LIST

Waypoint	Latitude	Longitude	Waypoint	Latitude	Longitude
BD401	14°49'21.050"N	017°04'27.294"W	GAVDI	14°01'09.292"N	016°51'36.575"W
BD402	14°49'23.779"N	016°59'17.603"W	KOSOM	14°54'44.630"N	017°04'30.343"W
BD403	14°49'27.330"N	016°52'04.032"W	LIGOV	15°28'00.000"N	019°24'15.000"W
BD404	14°36'59.546"N	016°23'14.681"W	LIMAX	16°44'54.960"N	017°20'07.080"W
BD405	14°20'19.929"N	016°51'47.609"W	MEPIX	15°20'24.849"N	017°04'44.891"W
BIDAV	13°20'29.000"N	016°39'33.000"W	NURAS	14°13'20.000"N	015°29'03.000"W
BIKIS	16°16'41.160"N	016°46'57.000"W	SAKLI	16°02'56.700"N	016°27'25.700"W
ERIDI	13°11'36.000"N	015°07'49.000"W	-	-	-



STANDARD DEPARTURE CHART  
INSTRUMENT (SID)  
Categories A-B-C-D

APP 120.5  
TWR 118.8

Blaise DIAGNE / Intl (GOBD)  
RWY 19

LIGOV 1H, LIMAX 1H, BIKIS 1H, SAKLI 1H, NURAS 1H, ERIDI 1H, BIDA V 1H,

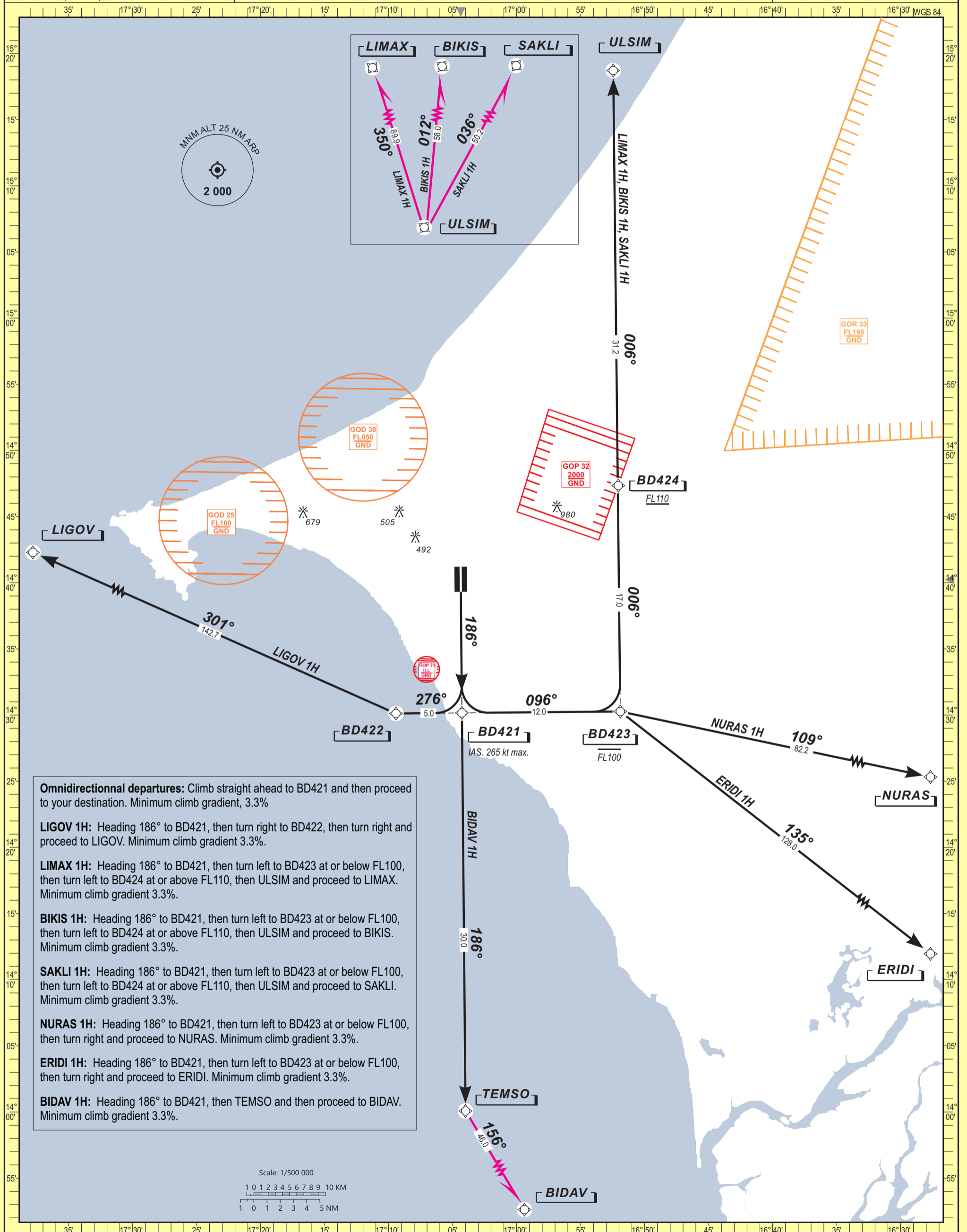
ELEV. & ALT IN FEET  
DISTANCE IN NM  
BRG ARE MAGNETIC  
VAR 7° W (2020)

Notes:

CONTINUOUS CLIMB OPERATIONS (CCO)

TRANSITION ALTITUDE: 3 500

RNP 1





### TABULAR DESCRIPTION

Serial Number	Path Descriptor	Waypoint Ident.	Fly Over	Course °M (T)	Magnetic Variation	Distance (NM)	Turn Direction	Altitude (ft)	Speed Limit (kt)	NAV. Spec.
<b>LIGOV 1H</b>										
010	CF	BD421	-	186 (179.4)	-	-	-	-	-265	RNP 1
020	TF	BD422	-	276 (269.4)	-	5.0	R	-	-	RNP 1
030	TF	LIGOV	-	301 (294.1)	-	142.7	R	-	-	RNP 1
<b>LIMAX 1H</b>										
010	CF	BD421	-	186 (179.4)	-	-	-	-	-265	RNP 1
020	TF	BD423	-	096 (089.4)	-	12.0	L	-FL100	-	RNP 1
030	TF	BD424	-	006 (359.4)	-	17.0	L	+FL110	-	RNP 1
040	TF	ULSIM	-	006 (359.4)	-	31.2	-	-	-	RNP 1
050	TF	LIMAX	-	350 (342.8)	-	89.9	L	-	-	RNP 1
<b>BIKIS 1H</b>										
010	CF	BD421	-	186 (179.4)	-	-	-	-	-265	RNP 1
020	TF	BD423	-	096 (089.4)	-	12.0	L	-FL100	-	RNP 1
030	TF	BD424	-	006 (359.4)	-	17.0	L	+FL110	-	RNP 1
040	TF	ULSIM	-	006 (359.4)	-	31.2	-	-	-	RNP 1
050	TF	BIKIS	-	012 (005.2)	-	58.0	R	-	-	RNP 1
<b>SAKLI 1H</b>										
010	CF	BD421	-	186 (179.4)	-	-	-	-	-265	RNP 1
020	TF	BD423	-	096 (089.4)	-	12.0	L	-FL100	-	RNP 1
030	TF	BD424	-	006 (359.4)	-	17.0	L	+FL110	-	RNP 1
040	TF	ULSIM	-	006 (359.4)	-	31.2	-	-	-	RNP 1
050	TF	SAKLI	-	036 (028.7)	-	50.2	R	-	-	RNP 1
<b>NURAS 1H</b>										
010	CF	BD421	-	186 (179.4)	-	-	-	-	-265	RNP 1
020	TF	BD423	-	096 (089.4)	-	12.0	L	-FL100	-	RNP 1
030	TF	NURAS	-	109 (101.7)	-	82.2	R	-	-	RNP 1
<b>ERIDI 1H</b>										
010	CF	BD421	-	186 (179.4)	-	-	-	-	-265	RNP 1
020	TF	BD423	-	096 (089.4)	-	12.0	L	-FL100	-	RNP 1
030	TF	ERIDI	-	135 (127.5)	-	128.0	R	-	-	RNP 1
<b>BIDAV 1H</b>										
010	CF	BD421	-	186 (179.4)	-	-	-	-	-265	RNP 1
020	TF	TEMZO	-	186 (179.4)	-	30.0	-	-	-	RNP 1
030	TF	BIDAV	-	156 (148.8)	-	46.0	L	-	-	RNP 1

### WAYPOINTS LIST

Waypoint	Latitude	Longitude	Waypoint	Latitude	Longitude
BD421	14°30'09.701"N	017°04'16.467"W	LIGOV	15°28'00.000"N	019°24'15.000"W
BD422	14°30'06.883"N	017°09'25.707"W	LIMAX	16°44'54.960"N	017°20'07.080"W
BD423	14°30'16.003"N	016°51'54.284"W	NURAS	14°13'20.000"N	015°29'03.000"W
BD424	14°47'20.340"N	016°52'03.431"W	SAKLI	16°02'56.700"N	016°27'25.700"W
BIDAV	13°20'29.000"N	016°39'33.000"W	TEMZO	14°00'04.470"N	017°03'59.552"W
BIKIS	16°16'41.160"N	016°46'57.000"W	ULSIM	15°18'42.628"N	016°52'27.337"W
ERIDI	13°11'36.000"N	015°07'49.000"W	-	-	-



STANDARD ARRIVAL CHART  
INSTRUMENT (STAR)  
Categories A-B-C-D

APP 120.5  
TWR 118.8

Blaise DIAGNE / Intl (GOBD)  
RWY 01

LIGOV 1A, LIMAX 1A, BIKIS 1A, SAKLI 1A, NURAS 1A, ERIDI 1A, BIDAV 1A

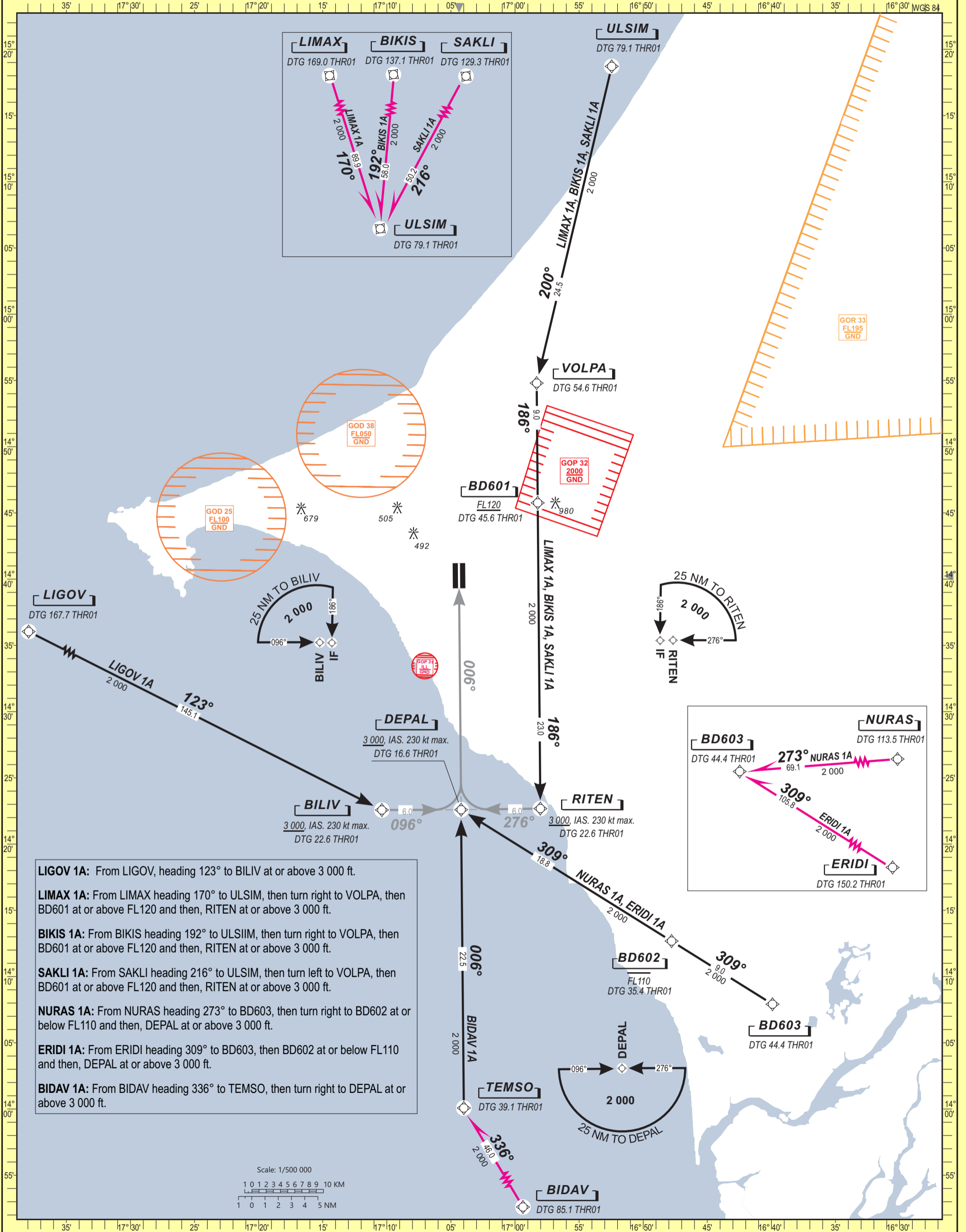
ELEV. & ALT IN FEET  
DISTANCE IN NM  
BRG ARE MAGNETIC  
VAR 7°W(2020)

Notes:

CONTINUOUS DESCENT OPERATIONS (CDO)

TRANSITION ALTITUDE: 3 500

RNP 1



**LIGOV 1A:** From LIGOV, heading 123° to BILIV at or above 3 000 ft.

**LIMAX 1A:** From LIMAX heading 170° to ULSIM, then turn right to VOLPA, then BD601 at or above FL120 and then, RITEN at or above 3 000 ft.

**BIKIS 1A:** From BIKIS heading 192° to ULSIM, then turn right to VOLPA, then BD601 at or above FL120 and then, RITEN at or above 3 000 ft.

**SAKLI 1A:** From SAKLI heading 216° to ULSIM, then turn left to VOLPA, then BD601 at or above FL120 and then, RITEN at or above 3 000 ft.

**NURAS 1A:** From NURAS heading 273° to BD603, then turn right to BD602 at or below FL110 and then, DEPAL at or above 3 000 ft.

**ERIDI 1A:** From ERIDI heading 309° to BD603, then BD602 at or below FL110 and then, DEPAL at or above 3 000 ft.

**BIDAV 1A:** From BIDAV heading 336° to TEMSO, then turn right to DEPAL at or above 3 000 ft.



## TABULAR DESCRIPTION

Serial Number	Path Descriptor	Waypoint Ident.	Fly Over	Course °M (T)	Magnetic Variation	Distance (NM)	Turn Direction	Altitude (ft)	Speed Limit (kt)	NAV. Spec.
<b>LIGOV 1A</b>										
010	IF	LIGOV	-	-	-	-	-	-	-	RNP 1
020	TF	BILIV	-	123 (116.4)	-	145.1	-	+3000	-230	RNP 1
<b>LIMAX 1A</b>										
010	IF	LIMAX	-	-	-	-	-	-	-	RNP 1
020	TF	ULSIM	-	170 (162.7)	-	89.9	-	-	-	RNP 1
030	TF	VOLPA	-	200 (193.4)	-	24.5	R	-	-	RNP 1
040	TF	BD601	-	186 (179.4)	-	9.0	L	+FL120	-	RNP 1
050	TF	RITEN	-	186 (179.4)	-	23.0	-	+3000	-230	RNP 1
<b>BIKIS 1A</b>										
010	IF	BIKIS	-	-	-	-	-	-	-	RNP 1
020	TF	ULSIM	-	192 (185.3)	-	58.0	-	-	-	RNP 1
030	TF	VOLPA	-	200 (193.4)	-	24.5	R	-	-	RNP 1
040	TF	BD601	-	186 (179.4)	-	9.0	L	+FL120	-	RNP 1
050	TF	RITEN	-	186 (179.4)	-	23.0	-	+3000	-230	RNP 1
<b>SAKLI 1A</b>										
010	IF	SAKLI	-	-	-	-	-	-	-	RNP 1
020	TF	ULSIM	-	216 (208.8)	-	50.2	-	-	-	RNP 1
030	TF	VOLPA	-	200 (193.4)	-	24.5	L	-	-	RNP 1
040	TF	BD601	-	186 (179.4)	-	9.0	L	+FL120	-	RNP 1
050	TF	RITEN	-	186 (179.4)	-	23.0	-	+3000	-230	RNP 1
<b>NURAS 1A</b>										
010	IF	NURAS	-	-	-	-	-	-	-	RNP 1
020	TF	BD603	-	273 (265.7)	-	69.1	-	-	-	RNP 1
030	TF	BD602	-	309 (301.8)	-	9.0	R	-FL110	-	RNP 1
040	TF	DEPAL	-	309 (301.8)	-	18.8	-	+3000	-230	RNP 1
<b>ERIDI 1A</b>										
010	IF	ERIDI	-	-	-	-	-	-	-	RNP 1
020	TF	BD603	-	309 (302.2)	-	105.8	-	-	-	RNP 1
030	TF	BD602	-	309 (301.8)	-	9.0	-	-FL110	-	RNP 1
040	TF	DEPAL	-	309 (301.8)	-	18.8	-	+3000	-230	RNP 1
<b>BIDAV 1A</b>										
010	IF	BIDAV	-	-	-	-	-	-	-	RNP 1
020	TF	TEMESO	-	336 (328.9)	-	46.0	-	-	-	RNP 1
030	TF	DEPAL	-	006 (359.4)	-	22.5	R	+3000	-230	RNP 1

## WAYPOINTS LIST

Waypoint	Latitude	Longitude	Waypoint	Latitude	Longitude
BD601	14°45'45.572"N	016°58'13.706"W	LIGOV	15°28'00.000"N	019°24'15.000"W
BD602	14°12'40.601"N	016°47'46.970"W	LIMAX	16°44'54.960"N	017°20'07.080"W
BD603	14°07'54.671"N	016°39'54.656"W	NURAS	14°13'20.000"N	015°29'03.000"W
BIDAV	13°20'29.000"N	016°39'33.000"W	RITEN	14°22'40.874"N	016°58'01.342"W
BIKIS	16°16'41.160"N	016°46'57.000"W	SAKLI	16°02'56.700"N	016°27'25.700"W
BILIV	14°22'34.262"N	017°10'23.103"W	TEMESO	14°00'04.470"N	017°03'59.552"W
DEPAL	14°22'37.649"N	017°04'12.224"W	ULSIM	15°18'42.628"N	016°52'27.337"W
ERIDI	13°11'36.000"N	015°07'49.000"W	VOLPA	14°54'47.859"N	016°58'18.560"W



STANDARD ARRIVAL CHART  
INSTRUMENT (STAR)  
Categories A-B-C-D

APP 120.5  
TWR 118.8

Blaise DIAGNE / Intl (GOBD)  
RWY 19

LIGOV 1G, LIMAX 1G, BIKIS 1G, SAKLI 1G, NURAS 1G, ERIDI 1G, BIDAV 1G

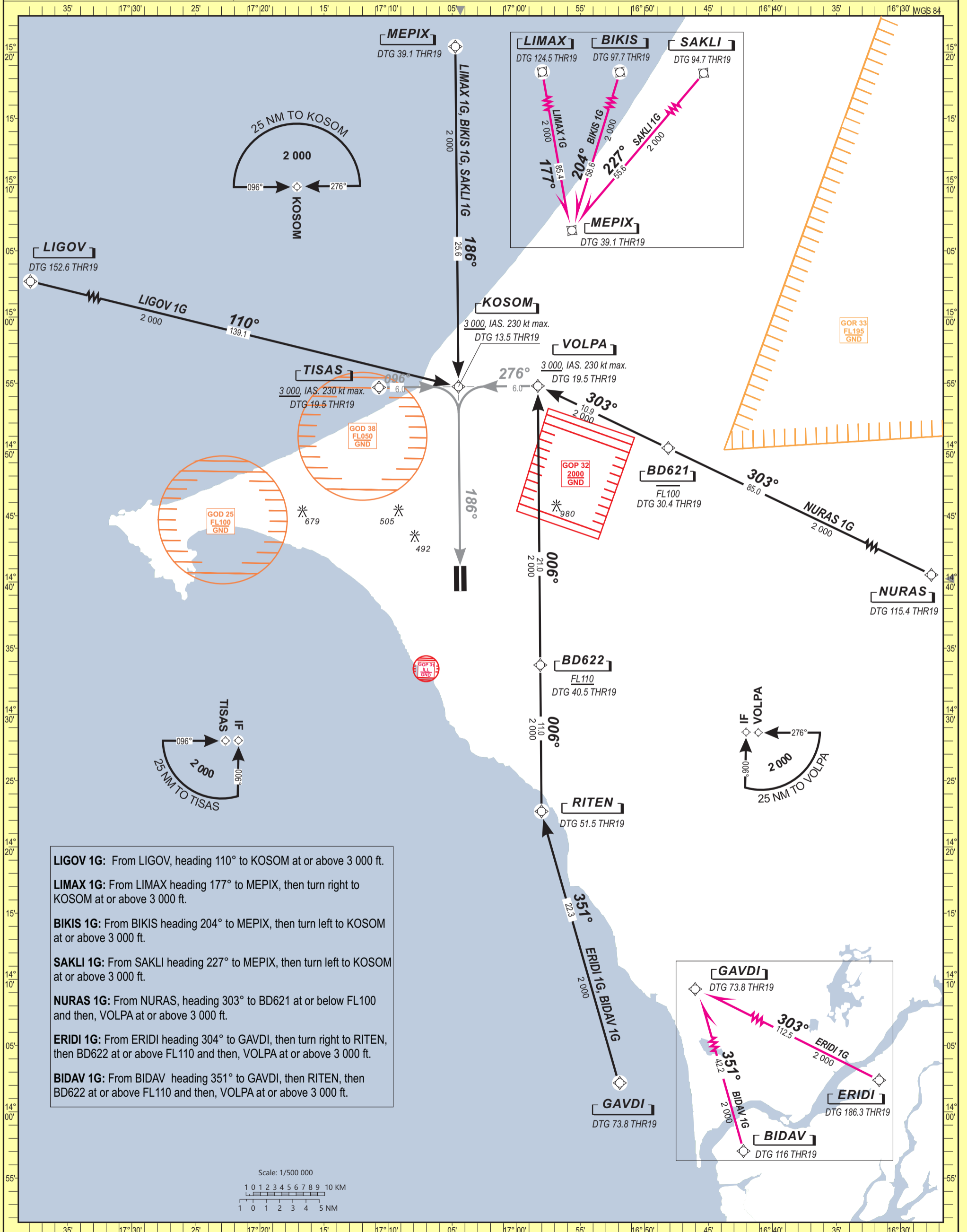
ELEV. & ALT IN FEET  
DISTANCE IN NM  
BRG ARE MAGNETIC  
VAR 7° W (2020)

Notes:

CONTINUOUS DESCENT OPERATIONS (CDO)

TRANSITION ALTITUDE: 3 500

RNP 1



**LIGOV 1G:** From LIGOV, heading 110° to KOSOM at or above 3 000 ft.

**LIMAX 1G:** From LIMAX heading 177° to MEPIX, then turn right to KOSOM at or above 3 000 ft.

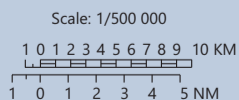
**BIKIS 1G:** From BIKIS heading 204° to MEPIX, then turn left to KOSOM at or above 3 000 ft.

**SAKLI 1G:** From SAKLI heading 227° to MEPIX, then turn left to KOSOM at or above 3 000 ft.

**NURAS 1G:** From NURAS, heading 303° to BD621 at or below FL100 and then, VOLPA at or above 3 000 ft.

**ERIDI 1G:** From ERIDI heading 304° to GAVDI, then turn right to RITEN, then BD622 at or above FL110 and then, VOLPA at or above 3 000 ft.

**BIDAV 1G:** From BIDAV heading 351° to GAVDI, then RITEN, then BD622 at or above FL110 and then, VOLPA at or above 3 000 ft.







### TABULAR DESCRIPTION

Serial Number	Path Descriptor	Waypoint Ident.	Fly Over	Course °M (T)	Magnetic Variation	Distance (NM)	Turn Direction	Altitude (ft)	Speed Limit (kt)	NAV. Spec.
<b>LIGOV 1G</b>										
010	IF	LIGOV	-	-	-	-	-	-	-	RNP 1
020	TF	KOSOM	-	110 (103.5)	-	139.1	-	+3000	-230	RNP 1
<b>LIMAX 1G</b>										
010	IF	LIMAX	-	-	-	-	-	-	-	RNP 1
020	TF	MEPIX	-	177 (170.0)	-	85.4	-	-	-	RNP 1
030	TF	KOSOM	-	186 (179.4)	-	25.6	R	+3000	-230	RNP 1
<b>BIKIS 1G</b>										
010	IF	BIKIS	-	-	-	-	-	-	-	RNP 1
020	TF	MEPIX	-	204 (197.1)	-	58.6	-	-	-	RNP 1
030	TF	KOSOM	-	186 (179.4)	-	25.6	L	+3000	-230	RNP 1
<b>SAKLI 1G</b>										
010	IF	SAKLI	-	-	-	-	-	-	-	RNP 1
020	TF	MEPIX	-	227 (220.4)	-	55.6	-	-	-	RNP 1
030	TF	KOSOM	-	186 (179.4)	-	25.6	L	+3000	-230	RNP 1
<b>NURAS 1G</b>										
010	IF	NURAS	-	-	-	-	-	-	-	RNP 1
020	TF	BD621	-	303 (295.7)	-	85.0	-	-FL100	-	RNP 1
030	TF	VOLPA	-	303 (295.7)	-	10.9	-	+3000	-230	RNP 1
<b>ERIDI 1G</b>										
010	IF	ERIDI	-	-	-	-	-	-	-	RNP 1
020	TF	GAVDI	-	303 (296.2)	-	112.5	-	-	-	RNP 1
030	TF	RITEN	-	351 (343.8)	-	22.3	R	-	-	RNP 1
040	TF	BD622	-	006 (359.4)	-	11.0	R	+FL110	-	RNP 1
050	TF	VOLPA	-	006 (359.4)	-	21.0	-	+3000	-230	RNP 1
<b>BIDAV 1G</b>										
010	IF	BIDAV	-	-	-	-	-	-	-	RNP 1
020	TF	GAVDI	-	351 (343.8)	-	42.2	-	-	-	RNP 1
030	TF	RITEN	-	351 (343.8)	-	22.3	-	-	-	RNP 1
040	TF	BD622	-	006 (359.4)	-	11.0	R	+FL110	-	RNP 1
050	TF	VOLPA	-	006 (359.4)	-	21.0	-	+3000	-230	RNP 1

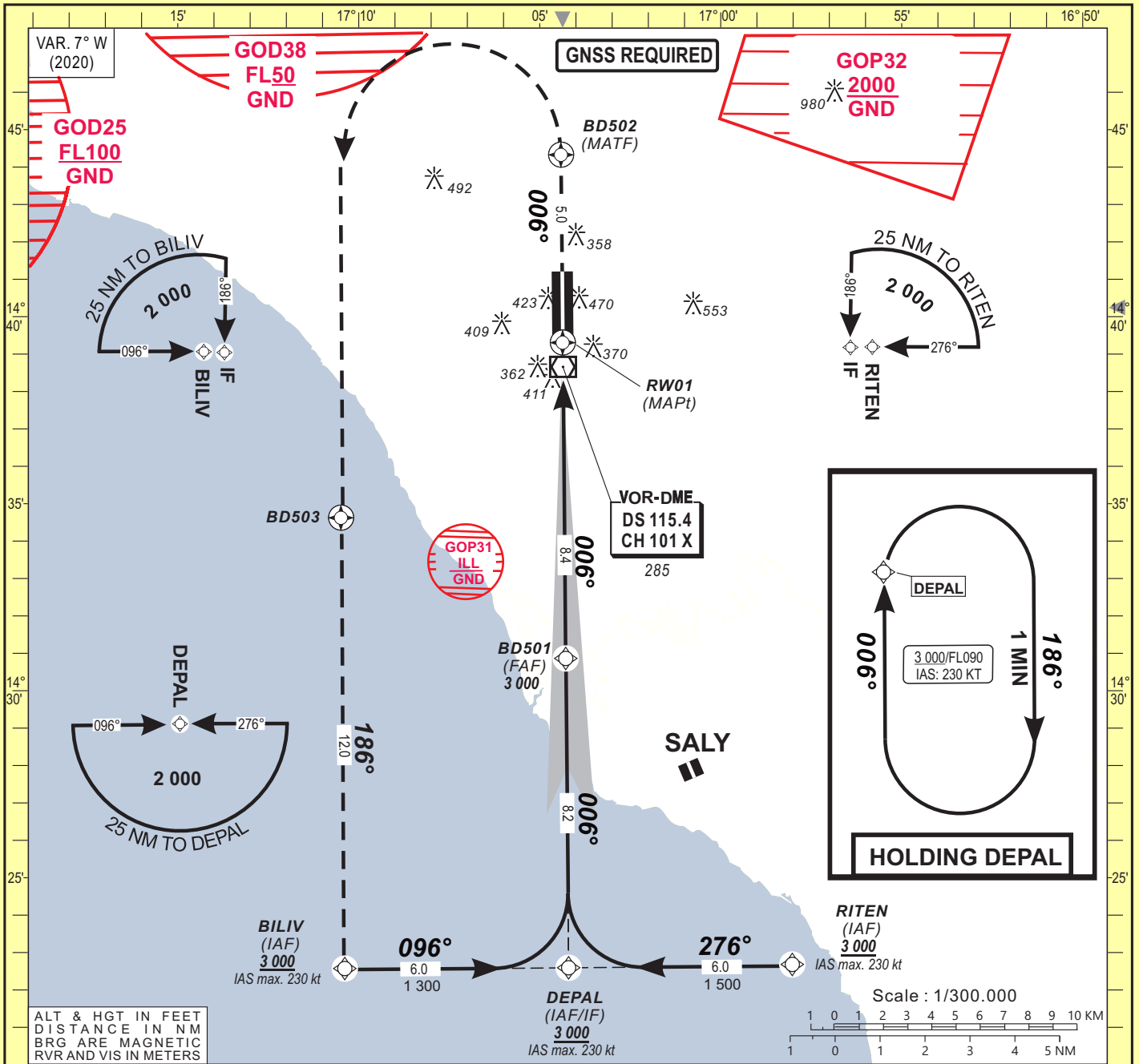
### WAYPOINTS LIST

Waypoint	Latitude	Longitude	Waypoint	Latitude	Longitude
BD621	14°50'06.744"N	016°48'07.929"W	LIMAX	16°44'54.960"N	017°20'07.080"W
BD622	14°33'43.690"N	016°58'07.254"W	MEPIX	15°20'24.849"N	017°04'44.891"W
BIKIS	16°16'41.160"N	016°46'57.000"W	NURAS	14°13'20.000"N	015°29'03.000"W
ERIDI	13°11'36.000"N	015°07'49.000"W	RITEN	14°22'40.874"N	016°58'01.342"W
GAVDI	14°01'09.292"N	016°51'36.575"W	SAKLI	16°02'56.700"N	016°27'25.700"W
KOSOM	14°54'44.630"N	017°04'30.343"W	TISAS	14°54'41.232"N	017°10'42.123"W
LIGOV	15°28'00.000"N	019°24'15.000"W	VOLPA	14°54'47.859"N	016°58'18.560"W

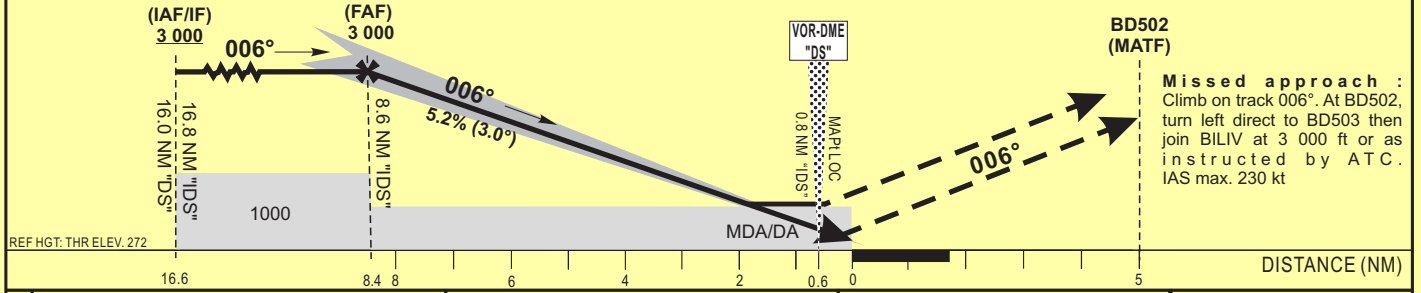
**INSTRUMENT APPROACH CHART**  
Categories A-B-C-D

ELEV : 290 APP : 120.5  
THR : 272 TWR : 118.8  
HEIGHT RELATED TO THR RWY 01 ELEVATION

Blaise DIAGNE / Intl (GOBD)  
ILS X or LOC X RWY 01  
IDENT ILS "IDS" FREQ 110.1



TRANSITION ALTITUDE: 3 500	Distance to DME-ILS "IDS" (NM)	FAF	8	7	6	5	4	3	2
	Altitude (ft)	3 000	2 805	2 490	2 170	1 850	1 530	1 215	895



CAT	CAT. I				LOC-DME				Circling <b>B</b>				RVR for take-off: CAT. A - B - C - D: 400	
	OCA (OCH)	DA	DH	RVR <b>1</b>	RVR <b>2</b>	OCA (OCH)	MDA	MDH	RVR <b>1</b>	RVR <b>2</b>	OCA (OCH)	MDA		MDH
A	472 (200)	480 (200)	550	550	1000	627 (355)	630 (360)	900	1500	766 (476)	770 (480)	1500		
B	472 (200)	480 (200)	550	550	1000	627 (355)	630 (360)	1000	1500	782 (492)	790 (500)	1600		
C	479 (207)	480 (210)	600	600	1000	627 (355)	630 (360)	1000	1800	887 (597)	890 (600)	2400		
D	489 (217)	490 (220)	600	600	1000	627 (355)	630 (360)	1400	2000	979 (689)	980 (690)	3600		

**Notes:**  
**1** With approach lights  
**2** Without approach lights  
**B** Daytime only. OCH and MDH AAL  
 - Minimum temperature : 10° C  
 - RDH: 15 m

**INSTRUMENT  
APPROACH CHART**  
**Categories A-B-C-D**

ELEV : 290

APP : 120.5

THR : 272

TWR : 118.8

HEIGHT RELATED TO THR RWY 01 ELEVATION

**Blaise DIAGNE / Intl (GOBD)**  
**ILS X or LOC X RWY 01**  
**IDENT ILS "IDS" FREQ 110.1**
**TABULAR DESCRIPTION**

Serial Number	Path Descriptor	Waypoint Identifier	Fly-Over	Course °M(°T)	Magnetic Variation	Distance (NM)	Turn Direction	Altitude (ft)	Speed limit (Kt)	VPA/TCH (°/m)	Navigation Specification
010	IF	BILIV	—	—	—	—	—	+3000	-230	—	RNP APCH
020	TF	DEPAL	—	096(089.4)	—	6.0	—	+3000	-230	—	RNP APCH
010	IF	RITEN	—	—	—	—	—	+3000	-230	—	RNP APCH
020	TF	DEPAL	—	276(269.4)	—	6.0	—	+3000	-230	—	RNP APCH
010	IF	DEPAL	—	—	—	—	—	+3000	-230	—	RNP APCH
020	TF	BD501	—	006(359.4)	—	8.2	—	@3000	—	—	N/A
030	TF	RW01	Y	006(359.4)	—	8.4	—	@322	—	3.0/15	N/A
010	IF	RW01	—	—	—	—	—	—	—	—	N/A
020	CF	BD502	Y	006(359.4)	+7.0	5.0	—	—	-230	—	RNP APCH
030	DF	BD503	—	—	—	—	L	—	-230	—	RNP APCH
040	TF	BILIV	—	—	—	12.0	—	+3000	-230	—	RNP APCH
010	IF	DEPAL	—	—	—	—	—	+3000	-230	—	RNP APCH
020	HM	DEPAL	—	006(359.4)	—	—	R	+3000	-230	—	RNP APCH

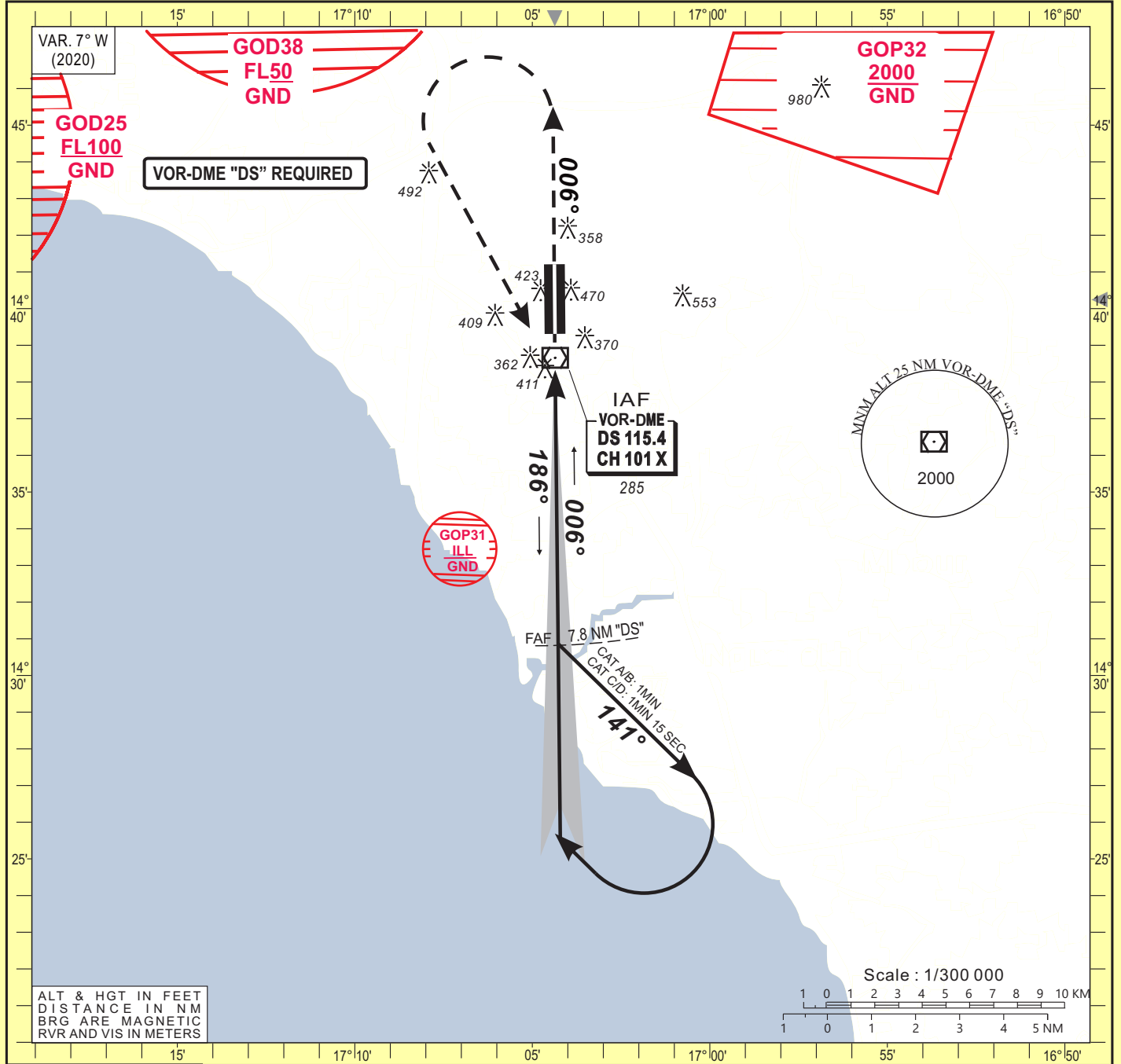
**WAYPOINT LIST**

Waypoint Identifier	Coordinates	
BILIV	14°22'34.262"N	017°10'23.103"W
DEPAL	14°22'37.649"N	017°04'12.224"W
RITEN	14°22'40.874"N	016°58'01.342"W
BD501	14°30'51.747"N	017°04'16.861"W
BD502	14°44'19.907"N	017°04'24.459"W
BD503	14°34'37.334"N	017°10'29.582"W
RW01	14°39'18.634"N	017°04'21.625"W

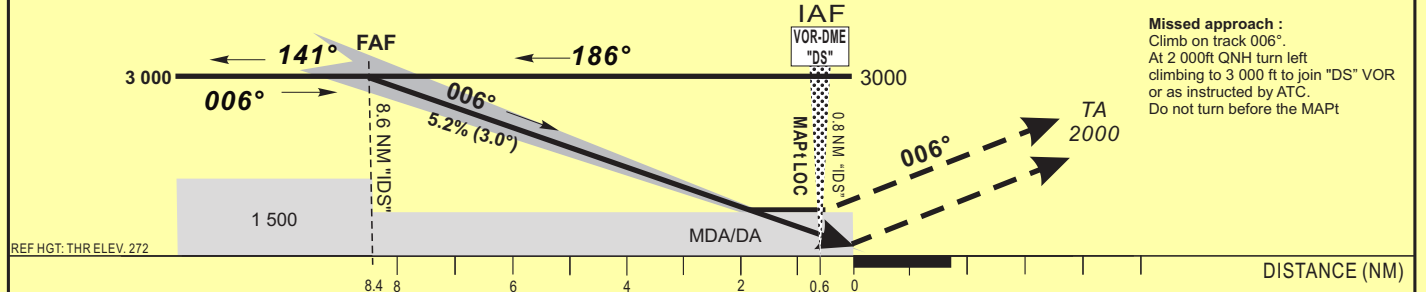
**INSTRUMENT APPROACH CHART**  
Categories A-B-C-D

ELEV : 290 DIASS APP : 120.5  
THR : 272 DIASS TWR : 118.8  
HEIGHT RELATED TO THR RWY 01 ELEVATION

**Blaise DIAGNE / Intl (GOBD)**  
ILS Y or LOC Y RWY 01  
IDENT ILS "IDS" FREQ 110.1



TRANSITION ALTITUDE: 3 500	Distance to DME-ILS "IDS" (NM)	FAF	8	7	6	5	4	3	2
	Altitude (ft)	3 000	2 805	2 490	2 170	1 850	1 530	1 215	895



CAT	CAT. I				LOC-DME				Circling <sup>3</sup>			RVR for take-off : CAT. A - B - C - D: 400		
	OCA (OCH)	DA	DH	RVR <sup>1</sup>	RVR <sup>2</sup>	OCA (OCH)	MDA	MDH	RVR <sup>1</sup>	RVR <sup>2</sup>	OCA (OCH)		MDA	MDH
A	472 (200)	480 (200)		550	1000	627 (355)	630 (360)		900	1500	766 (476)	770 (480)		1500
B	472 (200)	480 (200)		550	1000	627 (355)	630 (360)		1000	1500	782 (492)	790 (500)		1600
C	479 (207)	480 (210)		600	1000	627 (355)	630 (360)		1000	1800	887 (597)	890 (600)		2400
D	489 (217)	490 (220)		600	1000	627 (355)	630 (360)		1400	2000	979 (689)	980 (690)		3600

Timing FAF / THR 8.4 NM

KT	MIN	SEC	KT	MIN	SEC
90	5	Min 36	140	3	Min 36
100	5	Min 02	150	3	Min 22
110	4	Min 35	160	3	Min 09
120	4	Min 12	170	2	Min 58
130	3	Min 53	180	2	Min 48

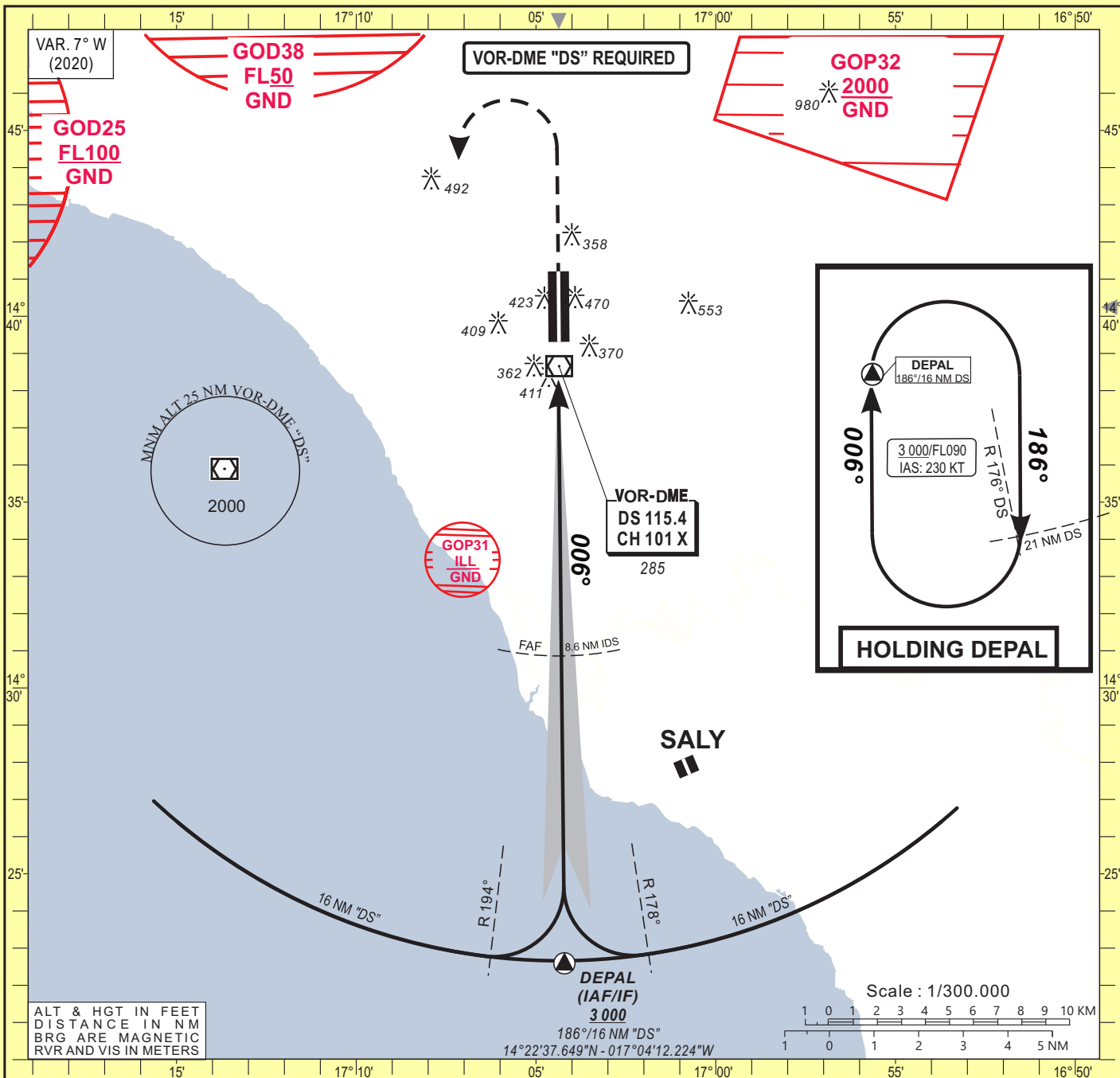
Notes: <sup>1</sup> With approach lights  
<sup>2</sup> Without approach lights  
<sup>3</sup> Daytime only. OCH and MDH AAL

- RDH: 15 m

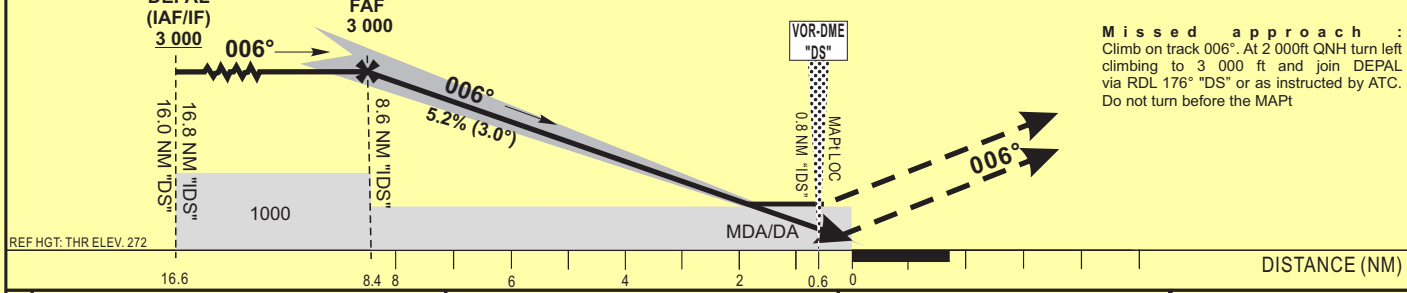
**INSTRUMENT APPROACH CHART**  
Categories A-B-C-D

ELEV : 290 APP : 120.5  
THR : 272 TWR : 118.8  
HEIGHT RELATED TO THR RWY 01 ELEVATION

Blaise DIAGNE / Intl (GOBD)  
ILS Z or LOC Z RWY 01  
IDENT ILS "IDS" FREQ 110.1



TRANSITION ALTITUDE: 3 500	Distance to DME-ILS "IDS" (NM)	FAF	8	7	6	5	4	3	2
	Altitude (ft)	3 000	2 805	2 490	2 170	1 850	1 530	1 215	895



**Missed approach :**  
Climb on track 006°. At 2 000ft QNH turn left climbing to 3 000 ft and join DEPAL via RDL 176° "DS" or as instructed by ATC. Do not turn before the MAPt

CAT	CAT. I				LOC-DME				Circling <b>B</b>				RVR for take-off: CAT. A - B - C - D: 400	
	OCA (OCH)	DA	DH	RVR <b>1</b>	RVR <b>2</b>	OCA (OCH)	MDA	MDH	RVR <b>1</b>	RVR <b>2</b>	OCA (OCH)	MDA		MDH
A	472 (200)	480 (200)	550	550	1000	627 (355)	630 (360)	900	1500	766 (476)	770 (480)	1500		
B	472 (200)	480 (200)	550	550	1000	627 (355)	630 (360)	1000	1500	782 (492)	790 (500)	1600		
C	479 (207)	480 (210)	600	600	1000	627 (355)	630 (360)	1000	1800	887 (597)	890 (600)	2400		
D	489 (217)	490 (220)	600	600	1000	627 (355)	630 (360)	1400	2000	979 (689)	980 (690)	3600		

Notes: **1** With approach lights  
**2** Without approach lights  
**B** Daytime only. OCH and MDH AAL

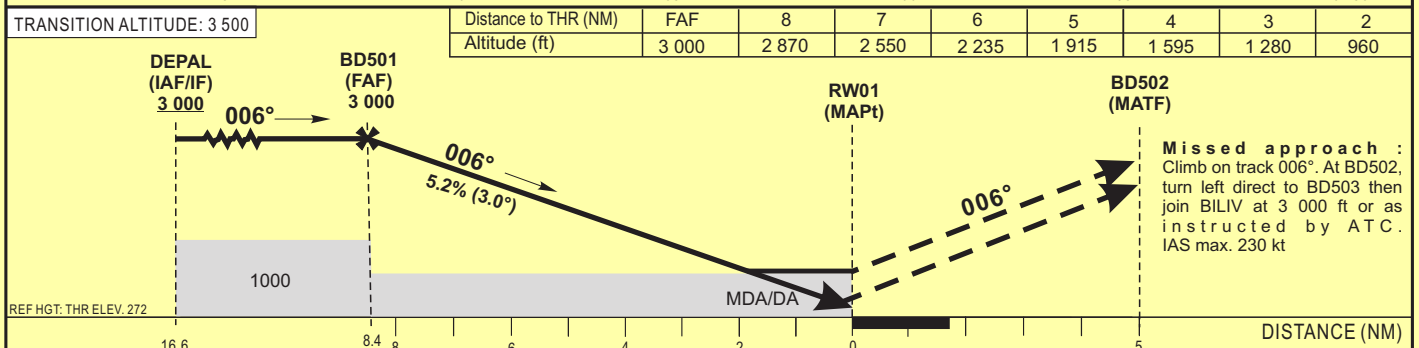
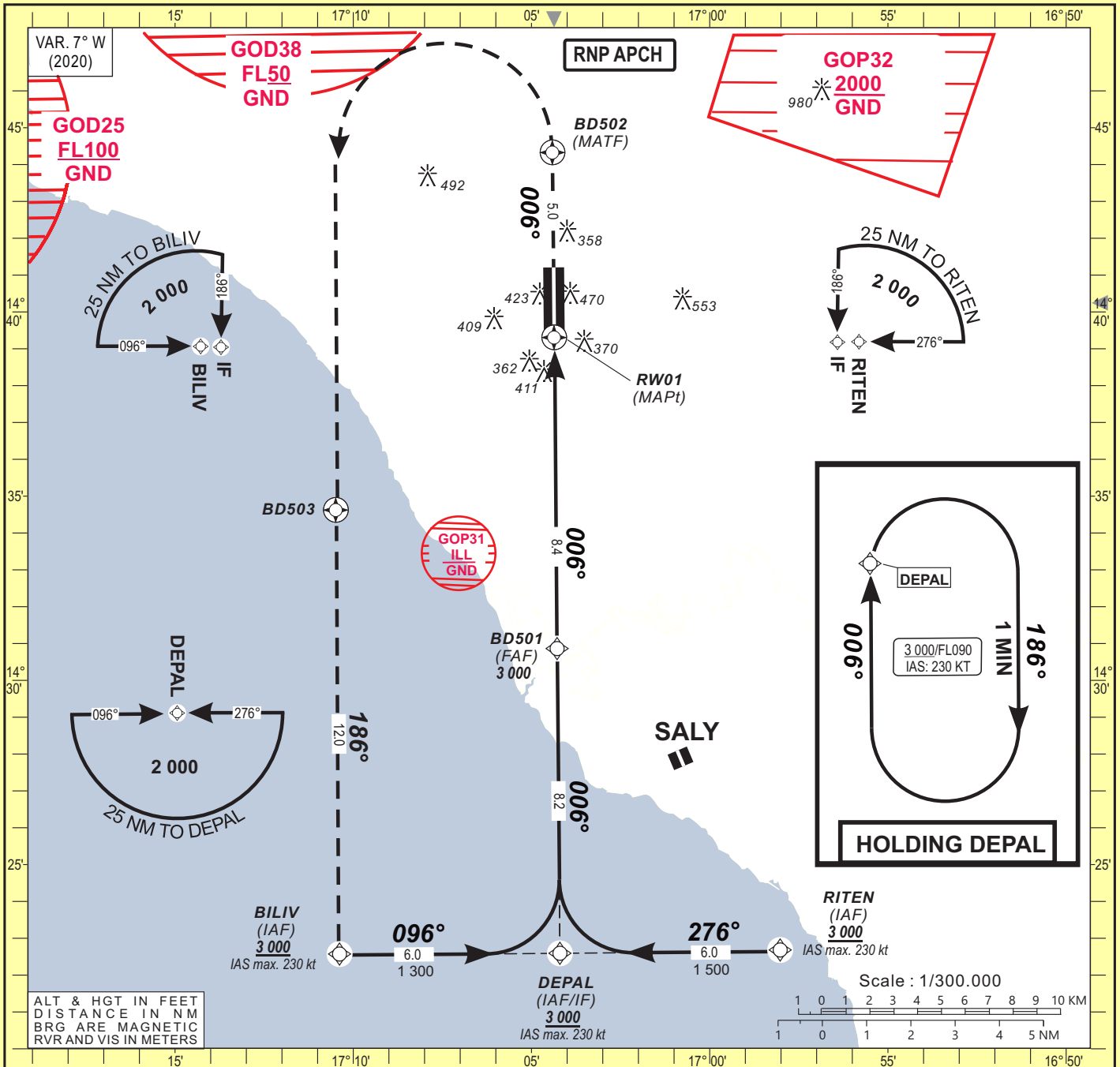
- RDH: 15 m

Timing		FAF / THR 8.4 NM	
KT	MIN SEC	KT	MIN SEC
90	5 Min 36	140	3 Min 36
100	5 Min 02	150	3 Min 22
110	4 Min 35	160	3 Min 09
120	4 Min 12	170	2 Min 58
130	3 Min 53	180	2 Min 48

**INSTRUMENT APPROACH CHART**  
Categories A-B-C-D

ELEV : 290 APP : 120.5  
THR : 272 TWR : 118.8  
HEIGHT RELATED TO THR RWY 01 ELEVATION

**Blaise DIAGNE / Intl (GOBD)**  
RNP RWY 01



CAT	LNAV/VNAV				LNAV				Circling <b>B</b>				RVR for take-off: CAT. A - B - C - D: 400
	OCA (OCH)	DA	DH	RVR <b>1</b>	RVR <b>2</b>	OCA (OCH)	MDA	MDH	RVR <b>1</b>	RVR <b>2</b>	OCA (OCH)	MDA	
A	541 (269)	550 (270)	650	650	1200	657 (385)	660 (390)	900	1500	766 (476)	770 (480)	1500	
B	553 (281)	560 (290)	650	650	1200	657 (385)	660 (390)	1000	1500	782 (492)	790 (500)	1600	
C	561 (289)	570 (290)	650	650	1200	657 (385)	660 (390)	1000	1800	887 (597)	890 (600)	2400	
D	572 (300)	580 (300)	650	650	1200	657 (385)	660 (390)	1400	2000	979 (689)	980 (690)	3600	

Notes: **1** With approach lights  
**2** Without approach lights  
**B** Daytime only. OCH and MDH AAL

- Minimum temperature : 10° C  
- RDH: 15 m

Timing		FAF / THR	
KT	MIN SEC	KT	MIN SEC
90	5 Min 36	140	3 Min 36
100	5 Min 02	150	3 Min 22
110	4 Min 35	160	3 Min 09
120	4 Min 12	170	2 Min 58
130	3 Min 53	180	2 Min 48

**INSTRUMENT  
APPROACH CHART**  
 Categories A-B-C-D

ELEV : 290

APP : 120.5

THR : 272

TWR : 118.8

 Blaise DIAGNE / Intl (GOBD)  
 RNP RWY 01

HEIGHT RELATED TO THR RWY 01 ELEVATION

**TABULAR DESCRIPTION**

Serial Number	Path Descriptor	Waypoint Identifier	Fly-Over	Course °M(°T)	Magnetic Variation	Distance (NM)	Turn Direction	Altitude (ft)	Speed limit (Kt)	VPA/TCH (°/m)	Navigation Specification
010	IF	BILIV	—	—	—	—	—	+3000	-230	—	RNP APCH
020	TF	DEPAL	—	096(089.4)	—	6.0	—	+3000	-230	—	RNP APCH
010	IF	RITEN	—	—	—	—	—	+3000	-230	—	RNP APCH
020	TF	DEPAL	—	276(269.4)	—	6.0	—	+3000	-230	—	RNP APCH
010	IF	DEPAL	—	—	—	—	—	+3000	-230	—	RNP APCH
020	TF	BD501	—	006(359.4)	—	8.2	—	@3000	—	—	RNP APCH
030	TF	RW01	Y	006(359.4)	—	8.4	—	@322	—	3.0/15	RNP APCH
010	IF	RW01	—	—	—	—	—	—	—	—	RNP APCH
020	CF	BD502	Y	006(359.4)	+7.0	5.0	—	—	-230	—	RNP APCH
030	DF	BD503	—	—	—	—	L	—	-230	—	RNP APCH
040	TF	BILIV	—	—	—	12.0	—	+3000	-230	—	RNP APCH
010	IF	DEPAL	—	—	—	—	—	+3000	-230	—	RNP APCH
020	HM	DEPAL	—	006(359.4)	—	—	R	+3000	-230	—	RNP APCH

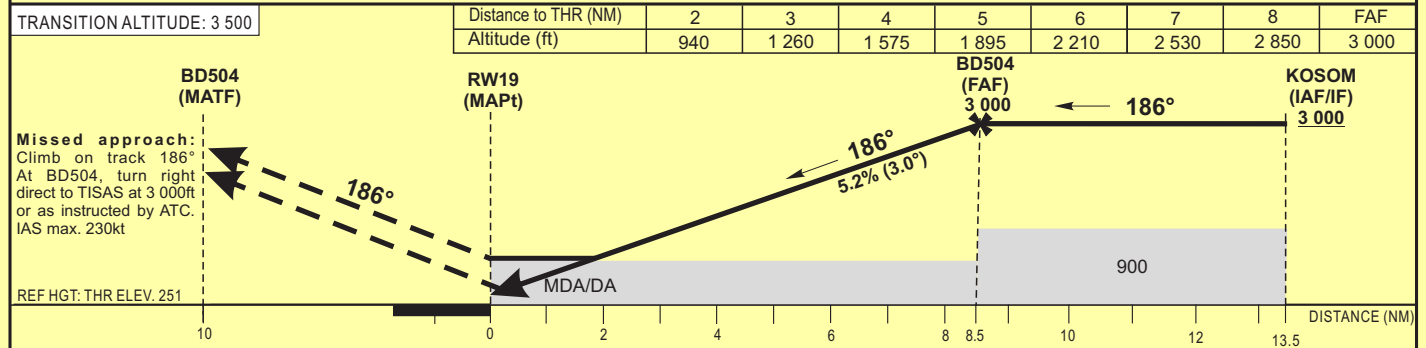
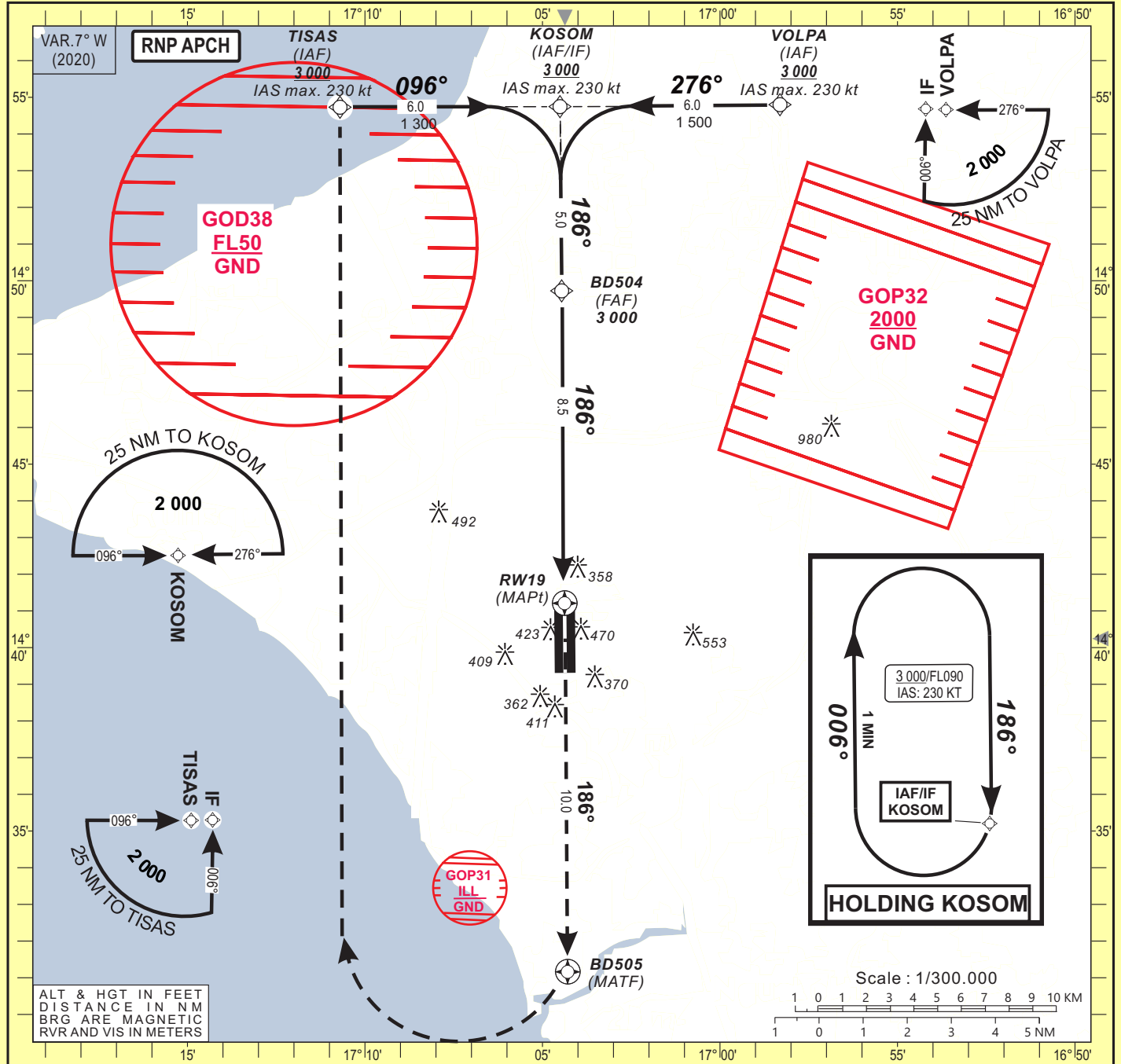
**WAYPOINTS LIST**

Waypoint Identifier	Coordinates	
BILIV	14°22'34.262"N	017°10'23.103"W
DEPAL	14°22'37.649"N	017°04'12.224"W
RITEN	14°22'40.874"N	016°58'01.342"W
BD501	14°30'51.747"N	017°04'16.861"W
BD502	14°44'19.907"N	017°04'24.459"W
BD503	14°34'37.334"N	017°10'29.582"W
RW01	14°39'18.634"N	017°04'21.625"W

**INSTRUMENT APPROACH CHART**  
Categories A-B-C-D

ELEV : 290 DIASS APP : 120.5  
THR : 251 DIASS TWR : 118.8  
HEIGHT RELATED TO THR RWY 19 ELEVATION

**Blaise DIAGNE / Intl (GOBD)**  
RNP RWY 19



CAT	LNAV/VNAV				LNAV				Circling			RVR for take-off : CAT. A - B - C - D : 400				
	OCA (OCH)	DA	DH	RVR 1	RVR 2	OCA (OCH)	MDA	MDH	RVR 1	RVR 2	OCA (OCH)	MDA	MDH	VIS	Timing	FAF / THR
A	501 (250)	510 (250)	700	700	1000	620 (369)	620 (370)	1200	1500	766 (476)	770 (480)	1500	1500		90	3 Min 39
B	502 (251)	510 (260)	800	800	1200	620 (369)	620 (370)	1300	1500	782 (492)	790 (500)	1600	1600		100	3 Min 24
C	515 (264)	520 (270)	800	800	1200	620 (369)	620 (370)	1400	1800	887 (597)	890 (600)	2400	2400		110	3 Min 11
D	542 (291)	550 (300)	800	800	1200	620 (369)	620 (370)	1600	2000	979 (689)	980 (690)	3600	3600		120	3 Min 00
															130	2 Min 50

Notes:   
 1 With approach lights   
 2 Without approach lights   
 3 Daytime only. OCH and MDH AAL   
 - Minimum temperature : 10° C   
 - RDH: 15 m



**INSTRUMENT  
APPROACH CHART**  
 Categories A-B-C-D

ELEV : 290

APP : 120.5

THR : 251

TWR : 118.8

 Blaise DIAGNE / Intl (GOBD)  
 RNP RWY 19

HEIGHT RELATED TO THR RWY 19 ELEVATION

**TABULAR DESCRIPTION**

Serial Number	Path Descriptor	Waypoint Identifier	Fly-Over	Course °M(°T)	Magnetic Variation	Distance (NM)	Turn Direction	Altitude (ft)	Speed limit (Kt)	VPA/TCH (°/m)	Navigation Specification
010	IF	TISAS	—	—	—	—	—	+3000	-230	—	RNP APCH
020	TF	KOSOM	—	096(089.4)	—	6.0	—	+3000	-230	—	RNP APCH
010	IF	VOLPA	—	—	—	—	—	+3000	-230	—	RNP APCH
020	TF	KOSOM	—	276(269.4)	—	6.0	—	+3000	-230	—	RNP APCH
010	IF	KOSOM	—	—	—	—	—	+3000	-230	—	RNP APCH
020	TF	BD504	—	186(179.4)	—	5.0	—	@3000	—	—	RNP APCH
030	TF	RW19	Y	186(179.4)	—	8.5	—	@301	—	3.0/15	RNP APCH
010	IF	RW19	—	—	—	—	—	—	—	—	RNP APCH
020	CF	BD505	Y	186(179.4)	+7.0	10.0	—	—	-230	—	RNP APCH
030	DF	TISAS	—	—	—	—	R	+3000	-230	—	RNP APCH
010	IF	KOSOM	—	—	—	—	—	+3000	-230	—	RNP APCH
020	HM	KOSOM	—	186(179.4)	—	—	R	+3000	-230	—	RNP APCH

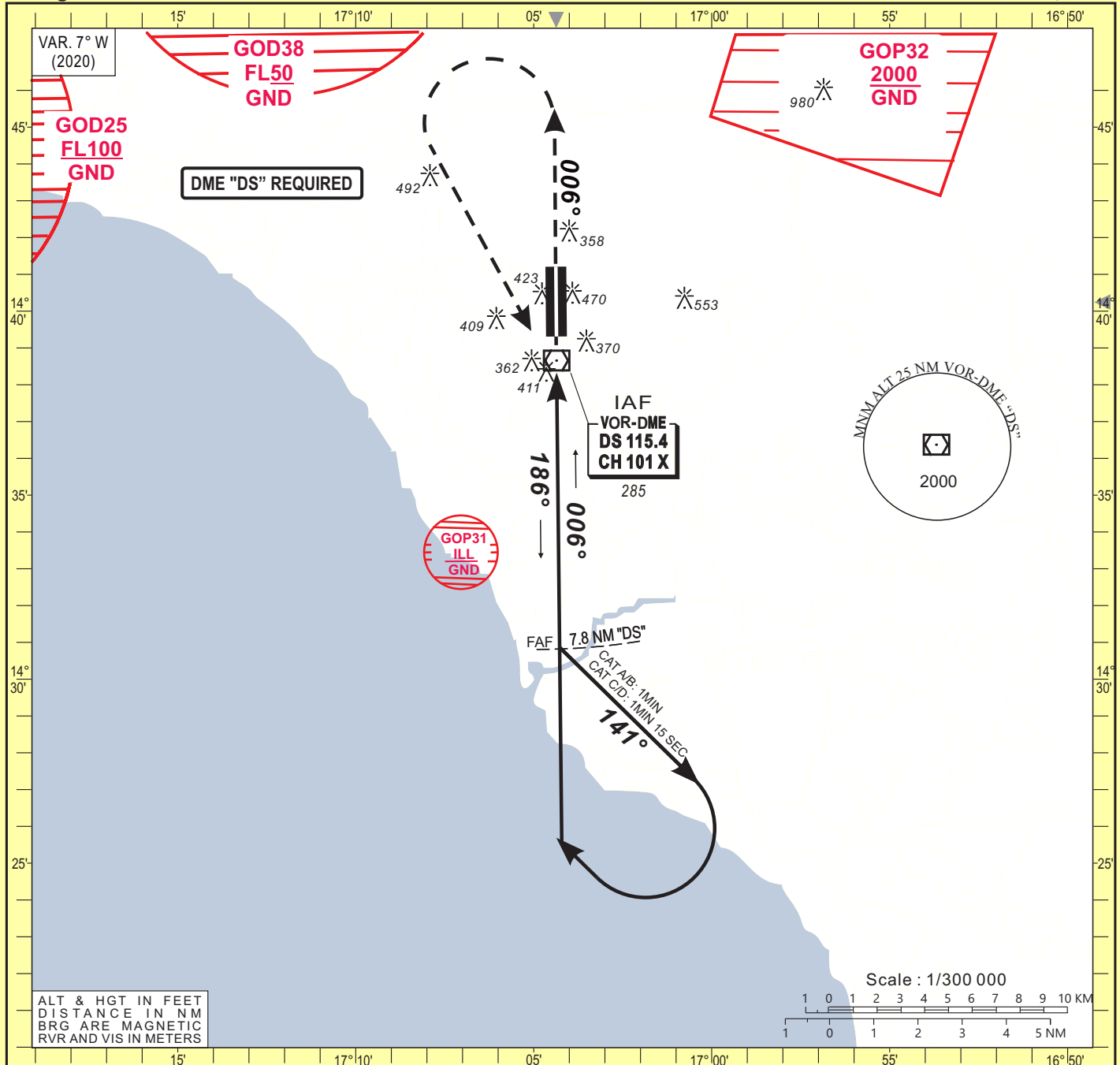
**WAYPOINTS LIST**

Waypoint Identifier	Coordinates	
KOSOM	14°54'44.630"N	017°04'30.343"W
TISAS	14°54'41.232"N	017°10'42.123"W
VOLPA	14°54'47.859"N	016°58'18.560"W
BD504	14°49'43.361"N	017°04'27.504"W
BD505	14°31'09.957"N	017°04'17.032"W
RW19	14°41'12.508"N	017°04'22.696"W

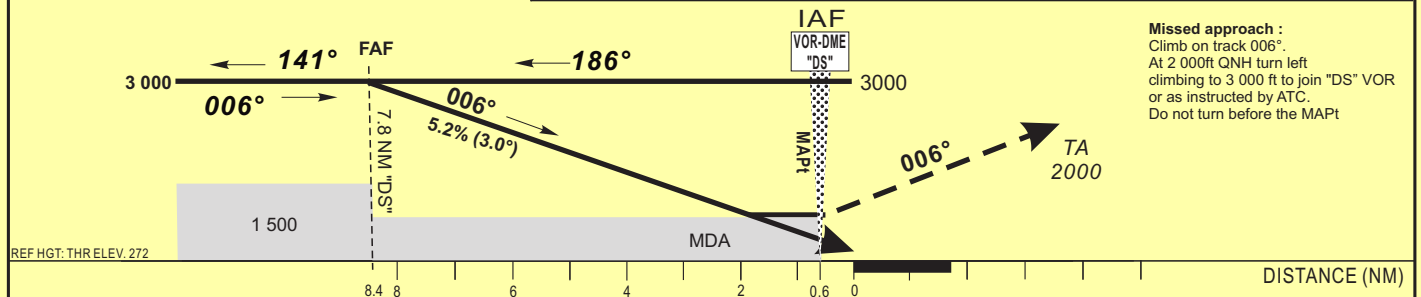
**INSTRUMENT APPROACH CHART**  
Categories A-B-C-D

ELEV : 290 DIASS APP : 120.5  
THR : 272 DIASS TWR : 118.8  
HEIGHT RELATED TO THR RWY 01 ELEVATION

**Blaise DIAGNE / Intl (GOBD)**  
VOR Y RWY 01  
IDENT VOR "DS" FREQ 115.4



TRANSITION ALTITUDE: 3 500	Distance to DME "DS" (NM)	FAF	7	6	5	4	3	2
	Altitude (ft)	3 000	2 740	2 425	2 105	1 785	1 470	1 150



CAT	VOR-DME				Circling				RVR for take-off : CAT. A - B - C - D: 400
	OCA (OCH)	MDA	MDH	RVR1	RVR2	OCA (OCH)	MDA	MDH	
A	657 (385)	660 (390)	900	1500	766 (476)	770 (480)	1500		
B	657 (385)	660 (390)	1000	1500	782 (492)	790 (500)	1600		
C	657 (385)	660 (390)	1000	1800	887 (597)	890 (600)	2400		
D	657 (385)	660 (390)	1400	2000	979 (689)	980 (690)	3600		

Notes:

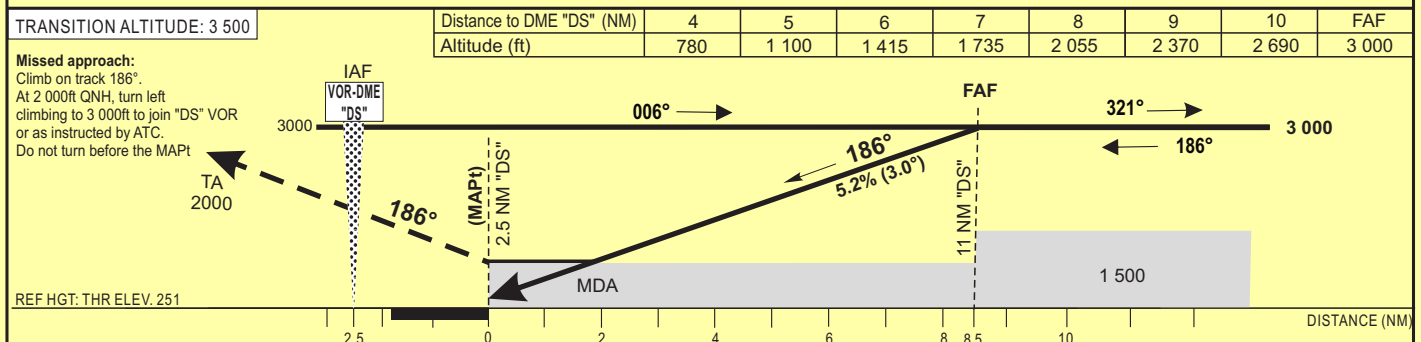
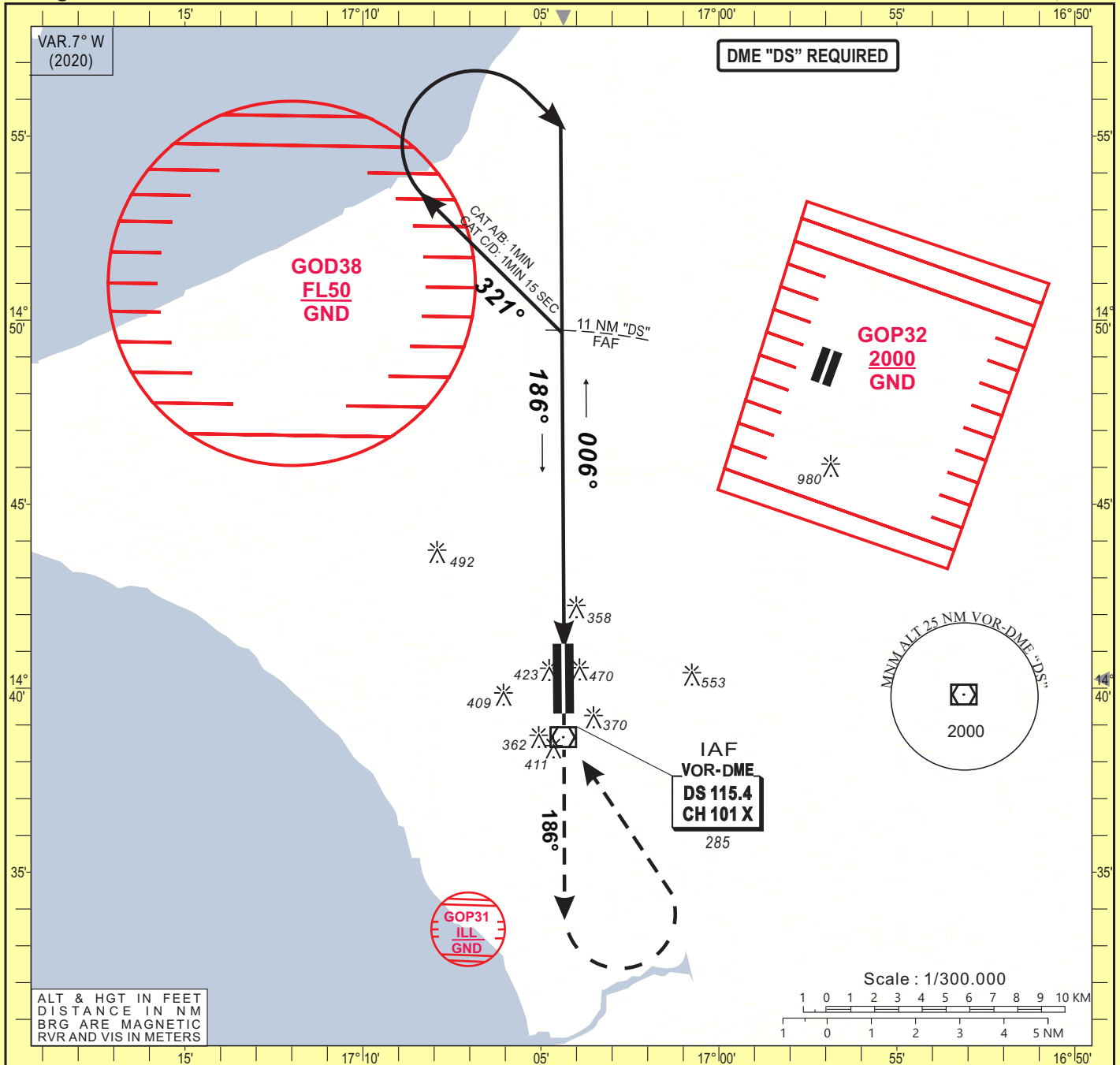
- 1 With approach lights
- 2 Without approach lights
- 3 Daytime only. OCH and MDH AAL

Timing	FAF / THR 8.4 NM						
	KT	MIN	SEC	KT	MIN	SEC	
90	5	Min	36	140	3	Min	36
100	5	Min	02	150	3	Min	22
110	4	Min	35	160	3	Min	09
120	4	Min	12	170	2	Min	58
130	3	Min	53	180	2	Min	48

**INSTRUMENT  
APPROACH CHART**  
Categories A-B-C-D

ELEV : 290 DIASS APP : 120.5  
THR : 251 DIASS TWR : 118.8  
HEIGHT RELATED TO THR RWY 19 ELEVATION

**Blaise DIAGNE / Intl (GOBD)**  
**VOR Y RWY 19**  
IDENT VOR "DS" FREQ 115.4



CAT	VOR-DME				Circling				RVR for take-off : CAT. A - B - C - D : 400
	OCA (OCH)	MDA	MDH	RVR <sup>1</sup>	RVR <sup>2</sup>	OCA (OCH)	MDA	MDH	
A	620 (369)	620 (370)	1200	1500	766 (476)	770 (480)	1500		
B	620 (369)	620 (370)	1300	1500	782 (492)	790 (500)	1600		
C	620 (369)	620 (370)	1400	1800	887 (597)	890 (600)	2400		
D	620 (369)	620 (370)	1600	2000	979 (689)	980 (690)	3600		

**Notes:**

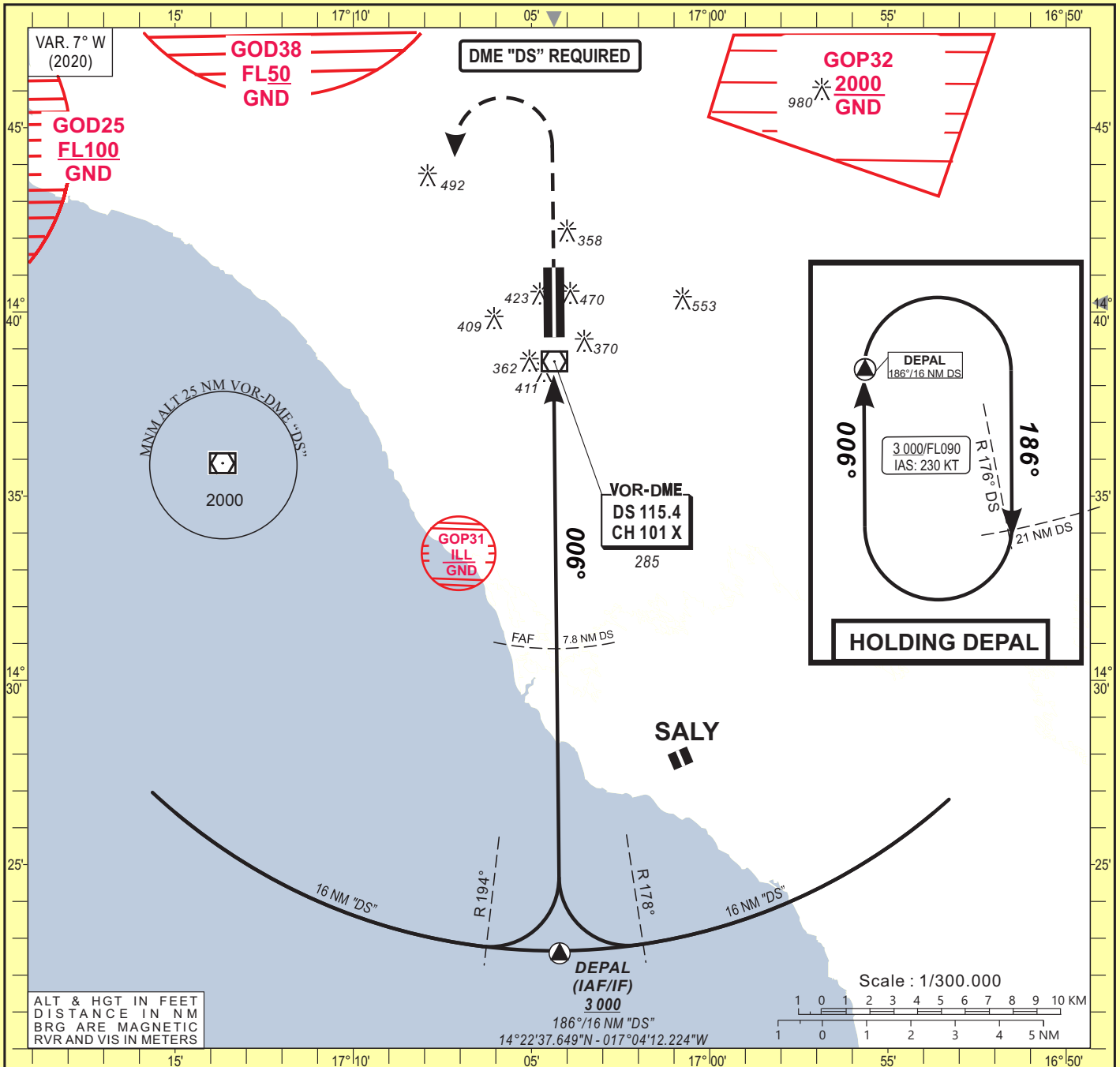
- <sup>1</sup> With approach lights
- <sup>2</sup> Without approach lights
- <sup>3</sup> Daytime only. OCH and MDH AAL

Timing		FAF / THR 8.5 NM	
KT	MIN SEC	KT	MIN SEC
90	5 Min 40	140	3 Min 39
100	5 Min 06	150	3 Min 24
110	4 Min 38	160	3 Min 11
120	4 Min 15	170	3 Min 00
130	3 Min 55	180	2 Min 50

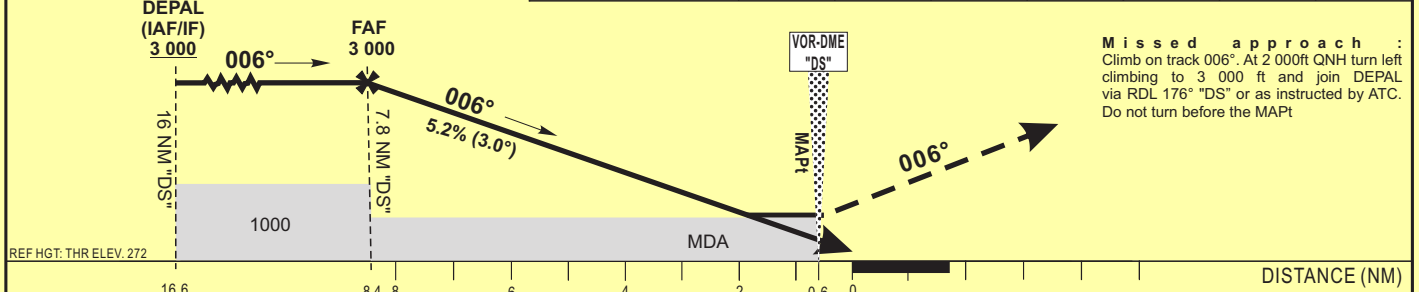
**INSTRUMENT APPROACH CHART**  
Categories A-B-C-D

ELEV : 290 APP : 120.5  
THR : 272 TWR : 118.8  
HEIGHT RELATED TO THR RWY 01 ELEVATION

**Blaise DIAGNE / Intl (GOBD)**  
VOR Z RWY 01  
IDENT VOR "DS" FREQ 115.4



TRANSITION ALTITUDE: 3 500	Distance to DME "DS" (NM)	7	6	5	4	3	2
	Altitude (ft)	3 000	2 740	2 425	2 105	1 785	1 150



CAT	VOR-DME				Circling <b>B</b>				RVR for take-off: CAT. A - B - C - D: 400
	OCA (OCH)	MDA	MDH	RVR <b>1</b>	RVR <b>2</b>	OCA (OCH)	MDA	MDH	
A	657 (385)	<b>660</b>	(390)	900	1500	766 (476)	<b>770</b>	(480)	1500
B	657 (385)	<b>660</b>	(390)	1000	1500	782 (492)	<b>790</b>	(500)	1600
C	657 (385)	<b>660</b>	(390)	1000	1800	887 (597)	<b>890</b>	(600)	2400
D	657 (385)	<b>660</b>	(390)	1400	2000	979 (689)	<b>980</b>	(690)	3600

**Notes:**

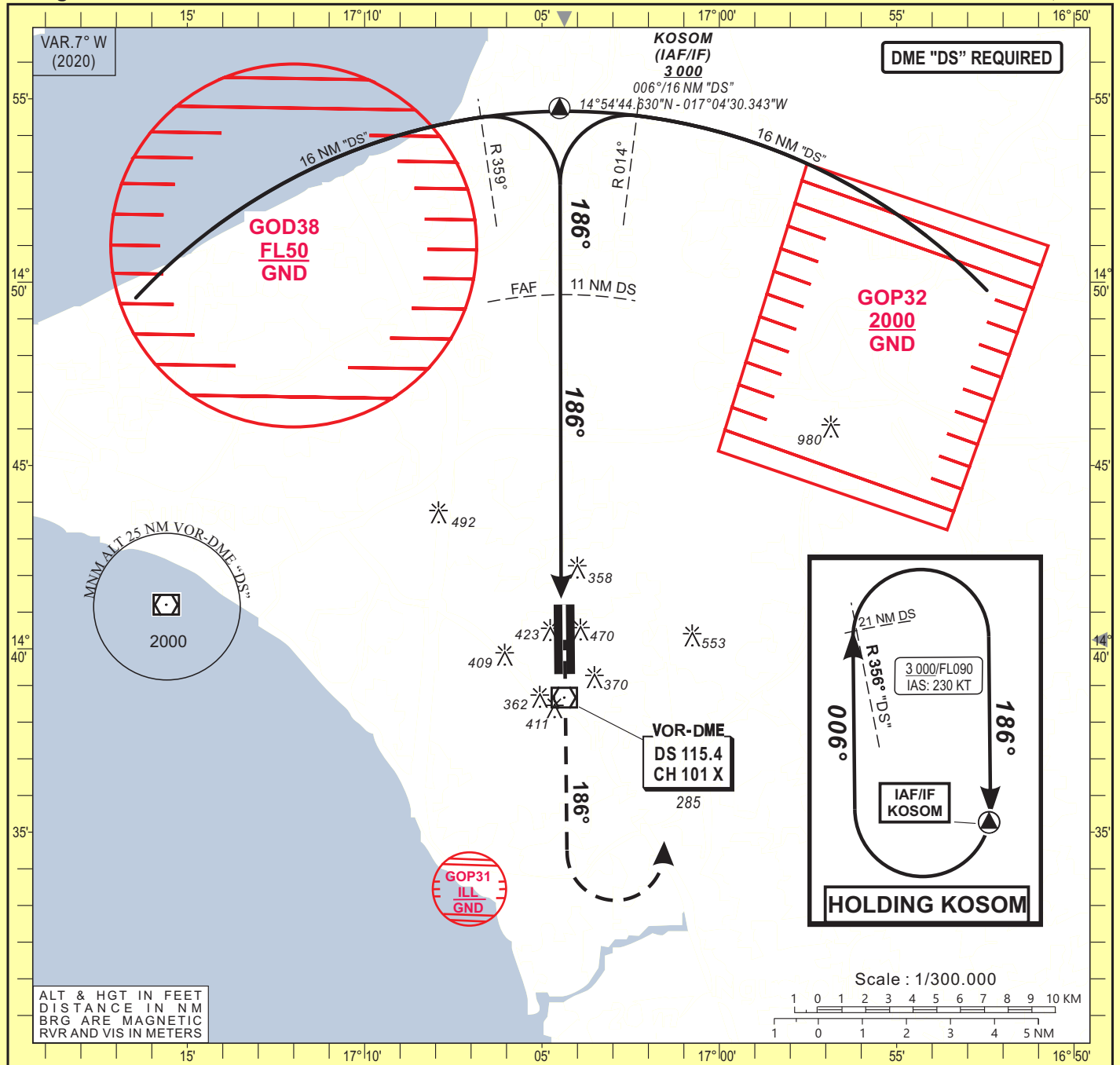
- 1** With approach lights
- 2** Without approach lights
- B** Daytime only. OCH and MDH AAL

KT	Timing				FAF / THR 8.4 NM	
	MIN	SEC	KT	MIN	SEC	
90	5	36	140	3	36	
100	5	02	150	3	22	
110	4	35	160	3	09	
120	4	12	170	2	58	
130	3	53	180	2	48	

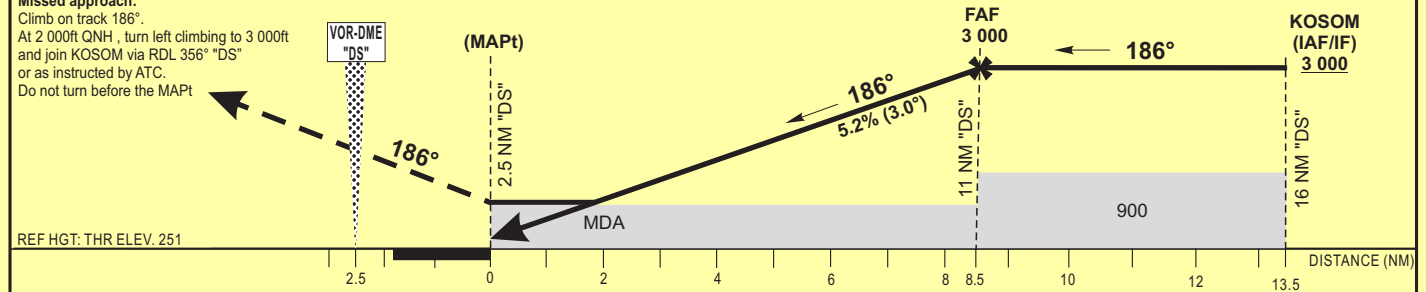
**INSTRUMENT APPROACH CHART**  
Categories A-B-C-D

ELEV : 290 DIASS APP : 120.5  
THR : 251 DIASS TWR : 118.8  
HEIGHT RELATED TO THR RWY 19 ELEVATION

**Blaise DIAGNE / Intl (GOBD)**  
**VOR Z RWY 19**  
IDENT VOR "DS" FREQ 115.4



TRANSITION ALTITUDE: 3 500	Distance to DME "DS" (NM)	4	5	6	7	8	9	10	FAF
	Altitude (ft)	780	1 100	1 415	1 735	2 055	2 370	2 690	3 000



CAT	VOR-DME				Circling				RVR for take-off : CAT. A - B - C - D : 400	
	OCA (OCH)	MDA	MDH	RVR1 RVR2	OCA (OCH)	MDA	MDH	VIS	KT	MIN SEC
A	620 (369)	620 (370)	1200	1500	766 (476)	770 (480)	1500		140	3 Min 39
B	620 (369)	620 (370)	1300	1500	782 (492)	790 (500)	1600		150	3 Min 24
C	620 (369)	620 (370)	1400	1800	887 (597)	890 (600)	2400		160	3 Min 11
D	620 (369)	620 (370)	1600	2000	979 (689)	980 (690)	3600		170	3 Min 00

**Notes:**  
 1 With approach lights  
 2 Without approach lights  
 3 Daytime only. OCH and MDH AAL

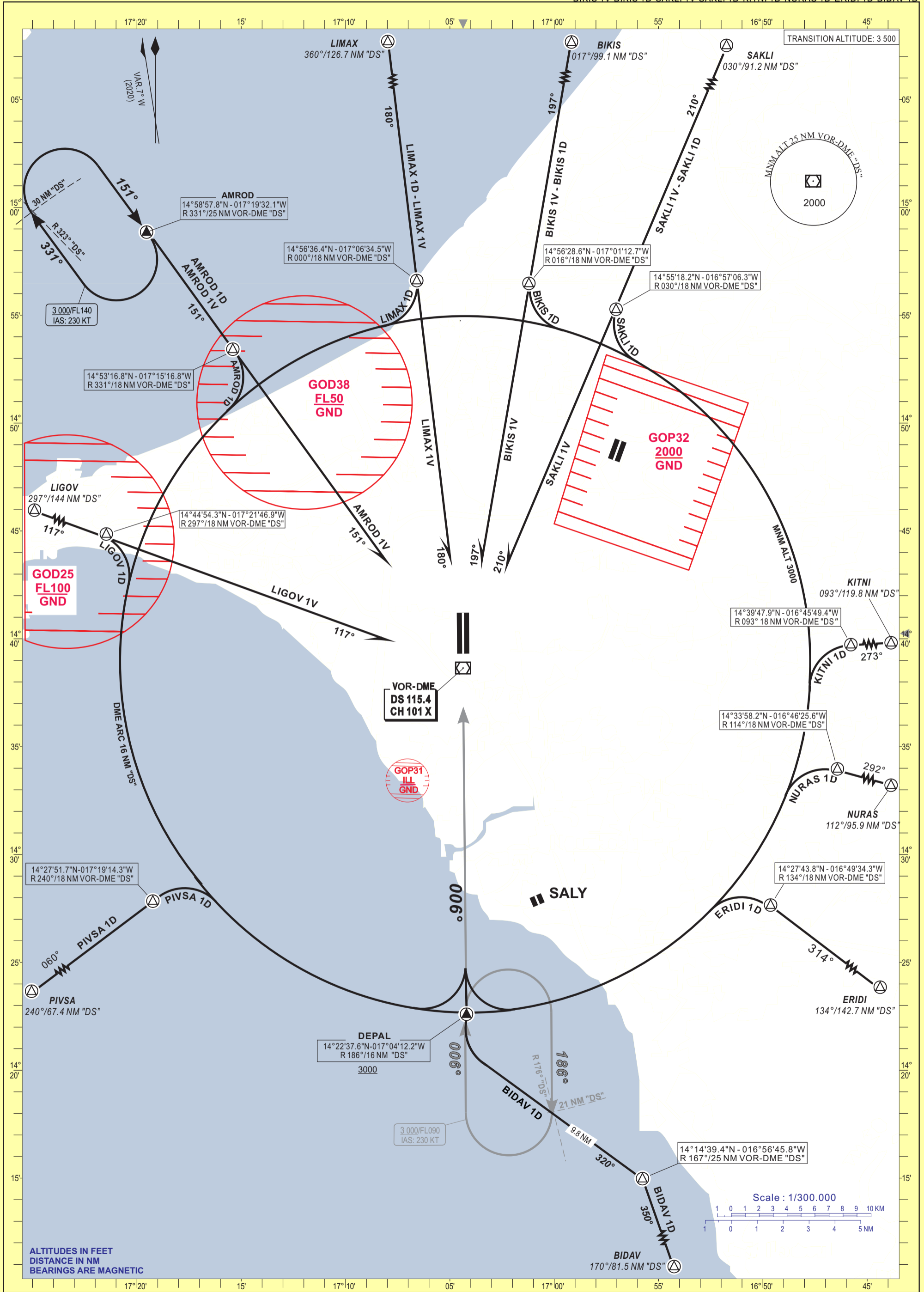
**Timing** FAF / THR 8.5 NM  
 90 5 Min 40 140 3 Min 39  
 100 5 Min 06 150 3 Min 24  
 110 4 Min 38 160 3 Min 11  
 120 4 Min 15 170 3 Min 00  
 130 3 Min 55 180 2 Min 50

STANDARD ARRIVAL CHART - INSTRUMENT (STAR VOR-DME)

APP : 120.5  
TWR : 118.8

Blaise DIAGNE / Intl (GOBD)  
RWY 01

PIVSA 1D-LIGOV 1V-LIGOV 1D-AMROD 1V-AMROD 1D-LIMAX 1V-LIMAX 1D  
BIKIS 1V-BIKIS 1D-SAKLI 1V-SAKLI 1D-KITNI 1D-NURAS 1D-ERIDI 1D-BIDAV 1D



STANDARD ARRIVAL CHART - INSTRUMENT (STAR VOR-DME)

APP : 120.5  
TWR : 118.8

PIVSA 1V-PIVSA 1K-LIGOV 1K-AMROD 1K-LIMAX 1K-BIKIS 1K  
SAKLI 1K-KITNI 1K-NURAS 1K-ERIDI 1K-BIDAV 1V-BIDAV 1K

