

Phone : +(221) 76.026.88.15
+(221) 33.957.49.37
Fax : +(221) 33.820.06.00
AFTN : GOOYNYX
E-mail : aim-gooo@asecna.org
Web : <https://ais.asecna.aero>



AIRAC AIP SUP
NR 34/A/24GO
MARCH 29, 2024

BUREAU NOTAM INTERNATIONAL DE L'OUEST AFRICAIN

B.P. 8155 Aéroport International Blaise DIAGNE Dakar/Diass-SENEGAL

BENIN – BURKINA FASO – COTE D'IVOIRE – GUINEE BISSAU – MALI – MAURITANIE – NIGER – SENEGAL – TOGO

CARTE D'APPROCHE AUX INSTRUMENTS RNP RWY 14 DE CAP SKIRRING

INSTRUMENTS APPROACH CHART RNP RWY 14 OF CAP SKIRRING

GOGS
/
SENEGAL

Mise en vigueur/Effective Date	18 Avril 2024/April 18,2024
Validité/Validity	PERM

Ce supplément annule et remplace le supplément NR 28/A/24GO du 21 mars 2024

This supplement cancels and replaces the supplement NR 28/A/24GO of March, 21st 2024

INSTRUMENT APPROACH CHART

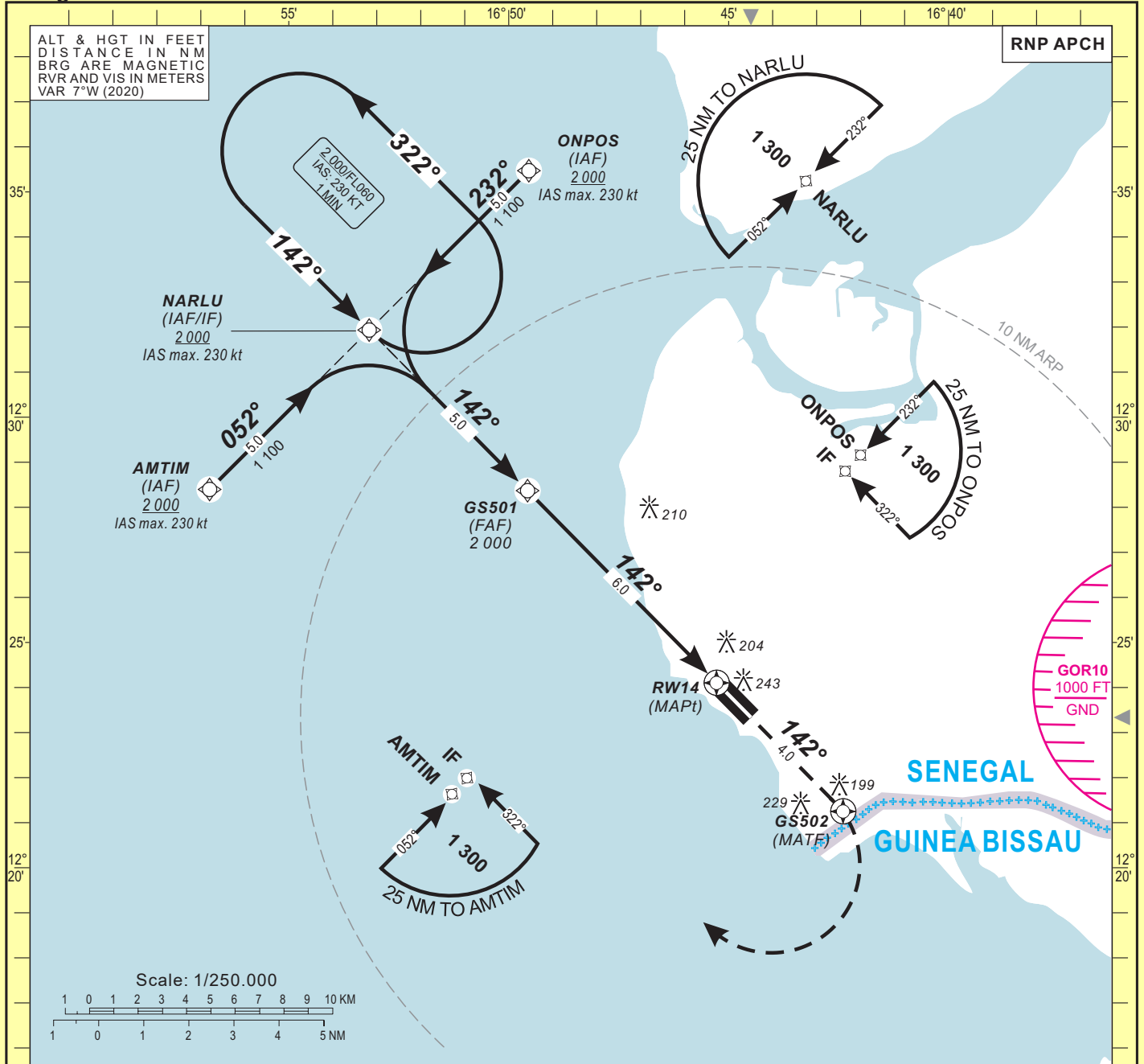
AERODROME ELEV: 55
 THR RWY 14 ELEV: 48
 HEIGHTS RELATED TO THR RWY 14 ELEV

TWR : Cap Skirring TWR 118.9
 APP : Cap Skirring TWR 118.9

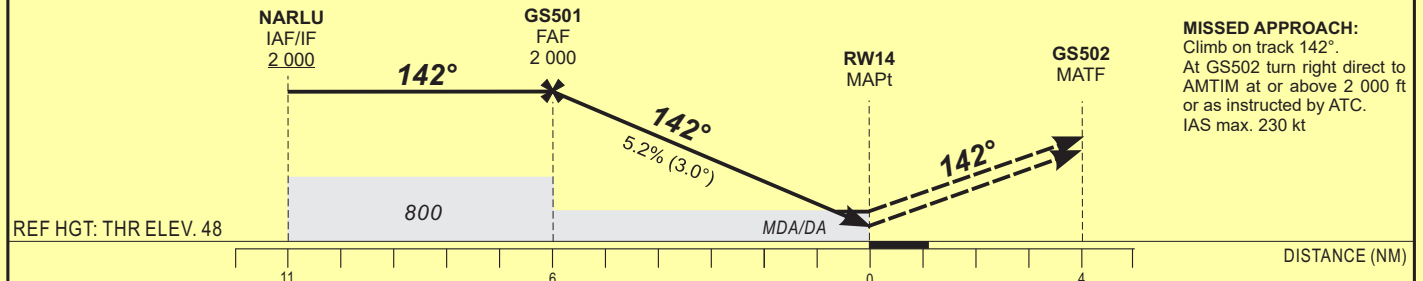
CAP SKIRRING (GOGS)

Categories **A-B-C**

RNP RWY 14



TRANSITION ALTITUDE: 3 100	FAF	5	4	3	2	1	TO RWY14 (NM)
	2 000	1 680	1 360	1 050	730	410	ALTITUDE (FT)



CAT	LNAV/VNAV				LNAV				CIRCLING (1)				RVR for take-off CAT. A-B-C : 400 m	
	OCA (OCH)	DA	DH	RVR	OCA (OCH)	MDA	MDH	RVR	OCA (OCH)	MDA	MDH	VIS	KT	MIN SEC
A	373 (325)	380 (330)	1200	-	489 (441)	490 (450)	1500	-	539 (484)	540 (490)	1500			
B	385 (337)	390 (340)	1200	-	489 (441)	490 (450)	1500	-	547 (492)	550 (500)	1600			
C	394 (346)	400 (350)	1200	-	489 (441)	490 (450)	1500	-	646 (591)	650 (600)	2400			
D	-	-	-	-	-	-	-	-	-	-	-			

Notes:	Timing		FAF / THR 6.0 NM	
	KT	MIN SEC	KT	MIN SEC
- (1) Daytime only. OCH and MDH AAL. - RDH : 15 m - Minimum temperature : 10 °C	90	4 Min 00	140	2 Min 34
	100	3 Min 36	150	2 Min 24
	110	3 Min 16	160	2 Min 15
	120	3 Min 00	170	-
	130	2 Min 46	180	-

**INSTRUMENT
APPROACH CHART**
Categories A-B-C

 AERODROME ELEV: 55
 THR RWY 14 ELEV: 48
 HEIGHTS RELATED TO THR RWY 14 ELEV

 TWR : Cap Skirring TWR 118.9
 APP : Cap Skirring TWR 118.9

CAP SKIRRING (GOGS)

RNP RWY 14

TABULAR DESCRIPTION

RNP RWY 14

Serial Number	Path Descriptor	Waypoint Identifier	Fly-Over	Course °M(°T)	Magnetic Variation	Distance (NM)	Turn Direction	Altitude (ft)	Speed limit (Kt)	VPA/TCH (°/m)	Navigation Specification
010	IF	AMTIM	—	—	—	—	—	+2000	-230	—	RNP APCH
020	TF	NARLU	—	052(045.2)	—	5.0	—	+2000	-230	—	RNP APCH
010	IF	ONPOS	—	—	—	—	—	+2000	-230	—	RNP APCH
020	TF	NARLU	—	232(225.2)	—	5.0	—	+2000	-230	—	RNP APCH
010	IF	NARLU	—	—	—	—	—	+2000	-230	—	RNP APCH
020	TF	GS501	—	142(135.2)	—	5.0	—	@2000	—	—	RNP APCH
030	TF	RW14	Y	142(135.2)	—	6.0	—	@98	—	3.0/15	RNP APCH
010	IF	RW14	—	—	—	—	—	—	—	—	RNP APCH
020	CF	GS502	Y	142(135.2)	+7.0	4.0	—	—	-230	—	RNP APCH
030	DF	AMTIM	—	—	—	—	R	+2000	-230	—	RNP APCH
010	IF	NARLU	—	—	—	—	—	+2000	-230	—	RNP APCH
020	HM	NARLU	—	142(135.2)	—	—	L	+2000	-230	—	RNP APCH

WAYPOINT LIST
RNP RWY 14
Waypoint Identifier
Coordinates

NARLU	12°31'55.970"N	016°53'10.309"W
AMTIM	12°28'23.711"N	016°56'48.001"W
ONPOS	12°35'28.180"N	016°49'32.519"W
GS501	12°28'22.075"N	016°49'34.282"W
GS502	12°21'15.181"N	016°42'23.576"W
RW14	12°24'06.380"N	016°45'16.231"W