

Phone : +(221) 76.026.88.15
+(221) 33.957.49.37
Fax : +(221) 33.820.06.00
AFTN : GOOONYX
E-mail : aim-gooo@asecna.org
Web : <https:ais.asecna.aero>



AIRAC AIP SUP
NR 113/A/24GO
12 DECEMBER, 2024

BUREAU NOTAM INTERNATIONAL DE L'OUEST AFRICAIN
B.P. 8155 Aéroport International Blaise DIAGNE Dakar/Diass-SENEGAL

BENIN – BURKINA FASO – COTE D'IVOIRE – GUINEE BISSAU – MALI – MAURITANIE – NIGER – SENEGAL – TOGO

**MISE A JOUR DES PROCEDURES DE VOL DE L'AEROPORT DE OUAGADOUGOU SUITE
AU DEMANTELEMENT DU NDB « OUA »**

***UPDATE OF OUAGADOUGOU AIRPORT FLIGHT PROCEDURES DUE TO
THE WITHDRAWAL OF THE "OUA" NDB***

DFFD

**/
BURKINA FASO**

| | |
|---------------------------------------|----------------------------------|
| Mise en vigueur/Effective Date | 23 Janvier 2025, January 23 2025 |
| Validité/Validity | Perm |

**CE SUPPLEMENT ANNULE ET REMPLACE LE SUPPLEMENT NR 105/A/24GO
THIS SUPPLEMENT CANCELS AND REPLACES THE SUPPLEMENT NR 105/A/24GO**

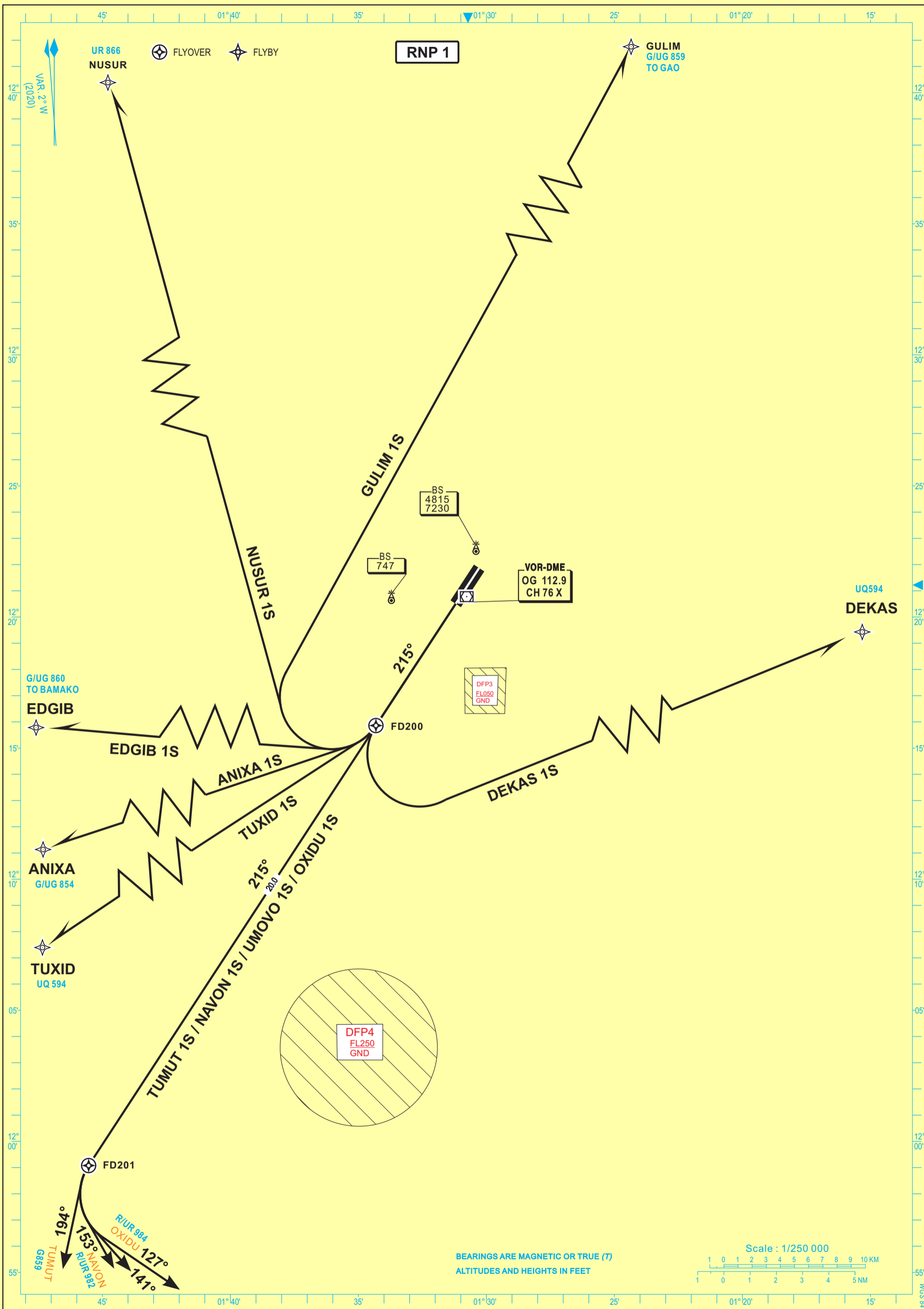


CORRECTIONS : NDB « OUA » withdrawn.

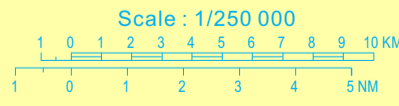
02AD2-DFD-SID-RNAV22

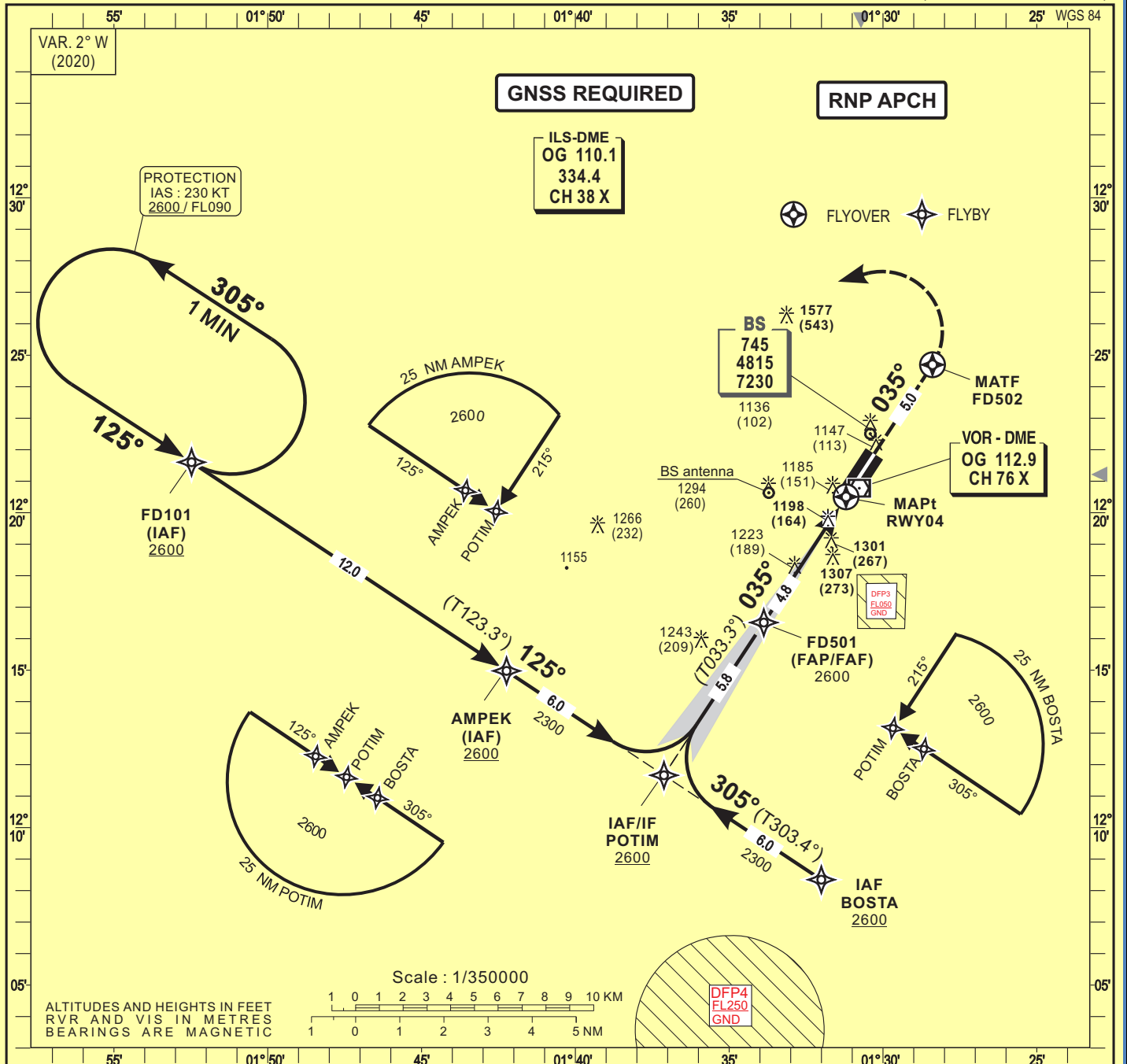
AERONAUTICAL INFORMATION SERVICE - ASECNA

23 JANUARY 2025

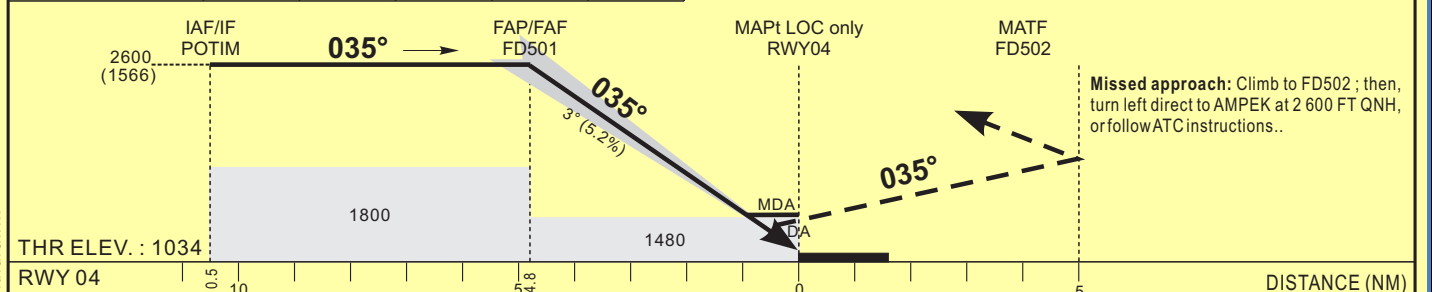


BEARINGS ARE MAGNETIC OR TRUE (T)
ALTITUDES AND HEIGHTS IN FEET





| | | | | | |
|----------------------|---------|------|------|------|----------------------------|
| Distance to THR (NM) | FAP/FAF | 4 | 3 | 2 | TRANSITION ALTITUDE : 3600 |
| Altitude (ft) | 2600 | 2300 | 1980 | 1660 | |



| CAT | CAT. 1 | | | | LOC | | | | Circling (3) | | | | RVR for take-off CATA - B - C - D : 400 | | |
|-----|------------|------------|------|---------------|------------|------------|-----------|---------------|--------------|------------|------|--------------------------------|--|------------|----------|
| | OCA (OCH) | DA | DH | RVR(1) RVR(2) | OCA (OCH) | MDA | MDH | RVR(1) RVR(2) | OCA (OCH) | MDA | MDH | VH | | | |
| A | 1330 (296) | 1330 (400) | 900 | 1500 | 1471 (437) | 1480 (440) | | 900 1500 | 1597 (559) | 1600 (560) | 1500 | Timing FAP/FAF - THR 4.8 NM | | | |
| B | 1339 (305) | 1340 (410) | 1000 | 1500 | | | 1000 1500 | 1603 (565) | 1610 (570) | 1600 | | | | | |
| C | 1349 (315) | 1350 (420) | 1000 | 1800 | | | 1000 1800 | 1701 (663) | 1710 (670) | 2400 | | | | | |
| D | 1359 (325) | 1360 (430) | 1400 | 2000 | | | 1400 2000 | 1971 (933) | 1980 (940) | 3600 | | | | | |
| | | | | | | | | | | | | | KT MIN SEC | KT MIN SEC | |
| | | | | | | | | | | | | 90 | 3 Min 12 | 140 | 2 Min 03 |
| | | | | | | | | | | | | 100 | 2 Min 53 | 150 | 1 Min 55 |
| | | | | | | | | | | | | 110 | 2 Min 37 | 160 | 1 Min 48 |
| | | | | | | | | | | | | 120 | 2 Min 24 | 170 | 1 Min 42 |
| | | | | | | | | | | | | 130 | 2 Min 13 | 180 | 1 Min 36 |

Notes :

- (1) With approach lights
- (2) Without approach lights
- Minimum temperature: 10°C
- (3) Daytime only
- OCH and MDH AAL

CORRECTIONS : NDB « OUA » withdrawn.

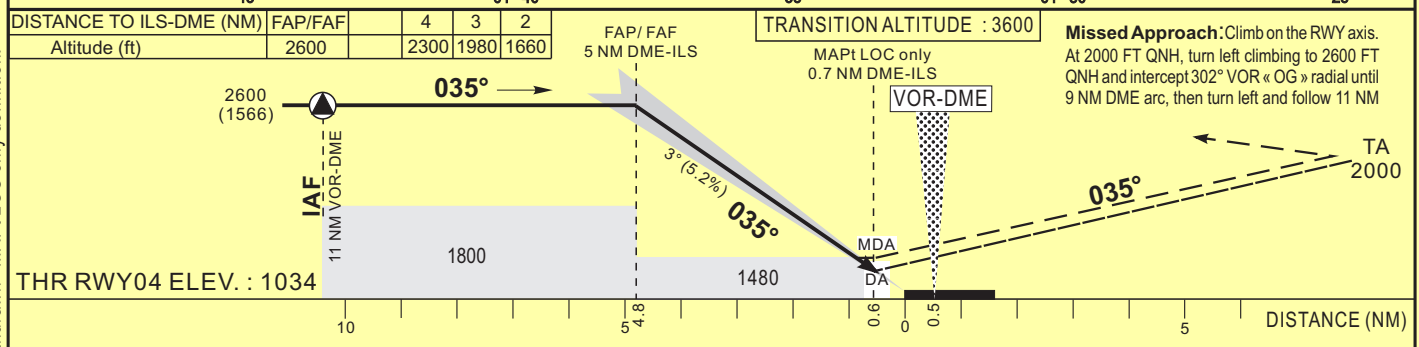
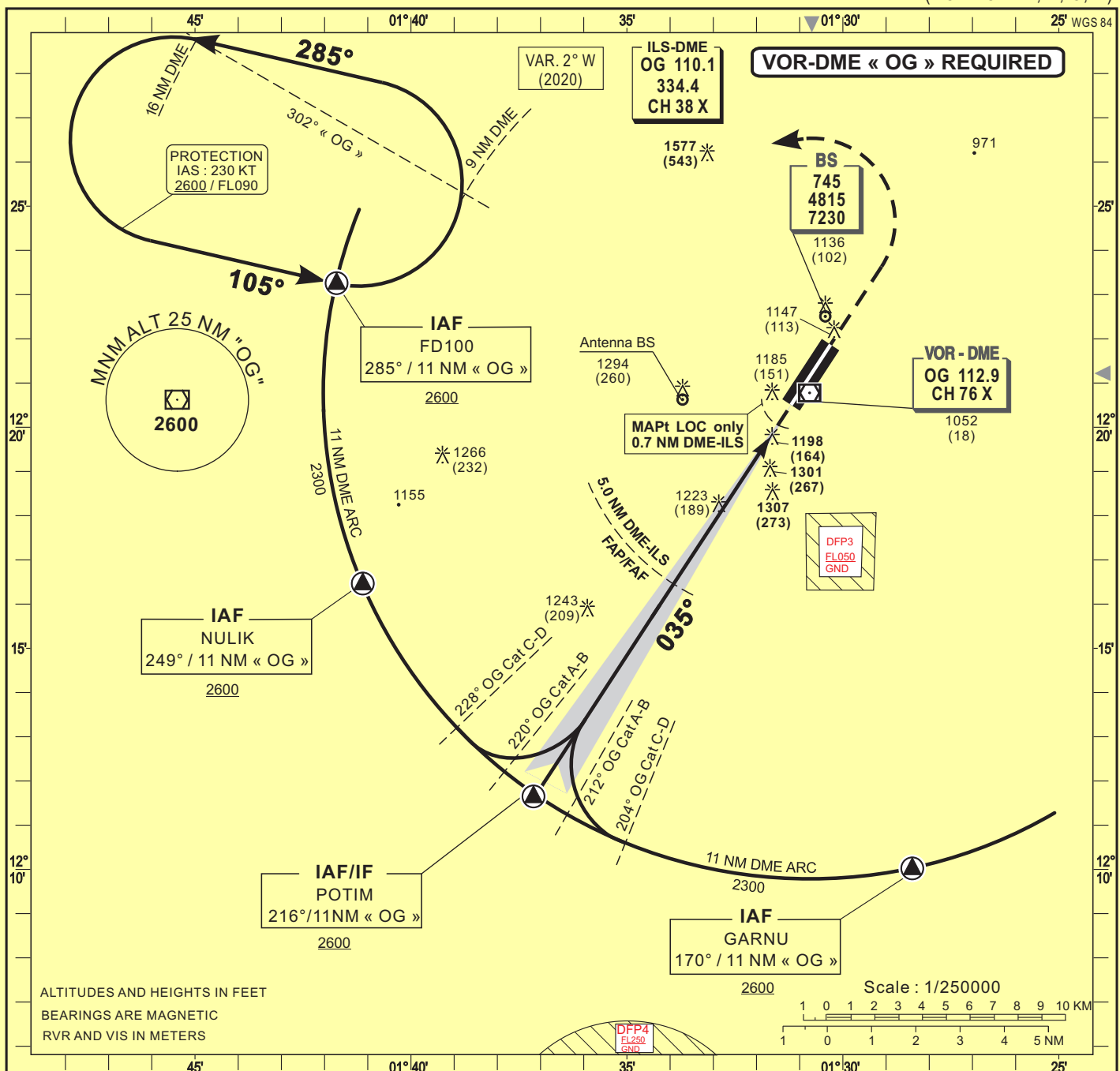
**INSTRUMENT
APPROACH
CHART-ICAO**

AERODROME ELEV 1038 FT

HEIGHTS RELATED TO THR RWY04 ELEV 1034 FT

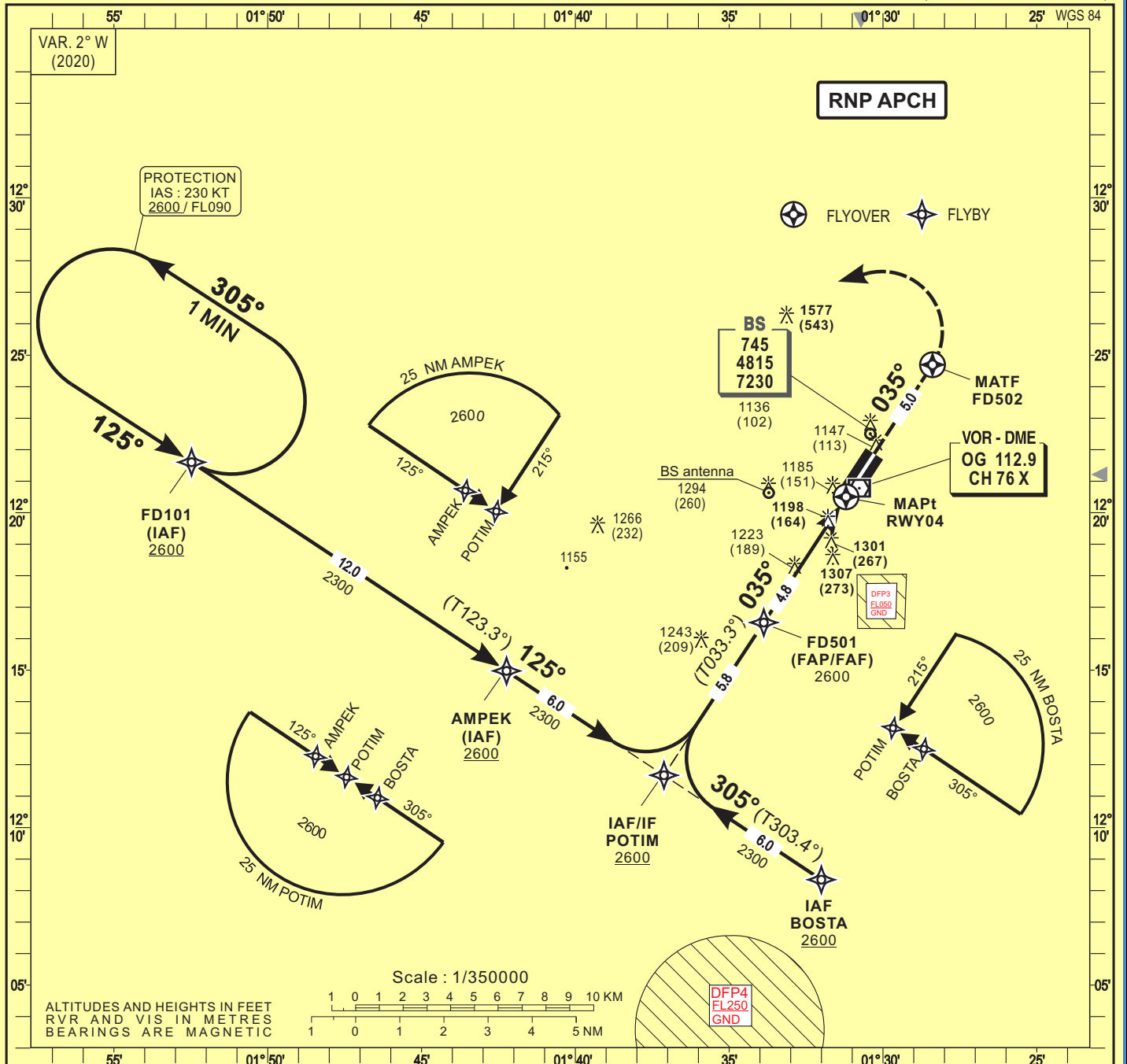
**APP 120.3
TWR 118.1**

**OUAGADOUGOU (DFFD)
ILS Z or LOC Z - RWY 04
(ACFT CAT A, B, C, D)**

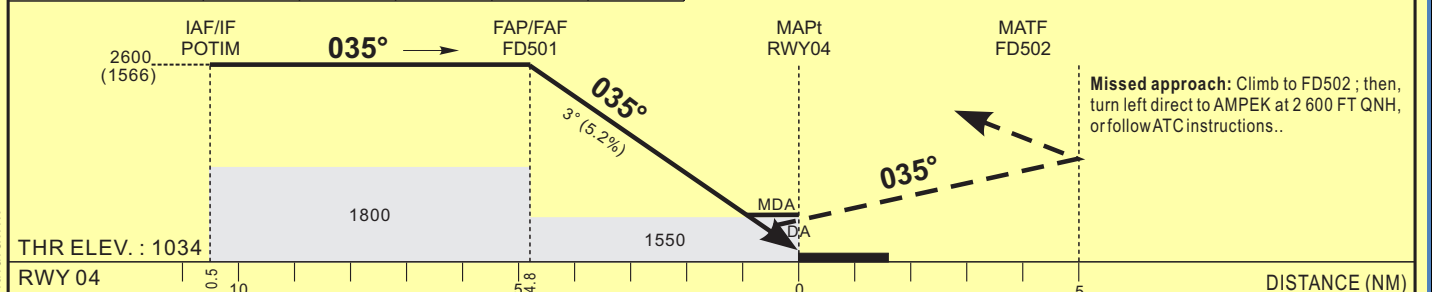


| CAT | CAT. 1 | | | | LOC | | | | Circling (3) | | | | RVR for take-off CAT A - B - C - D : 400 | | | | | | | | | |
|---|------------|------------|----|--------|--------|------------|------------|-----|--------------|--------|------------|------------|---|------|--------|---------------------|-----|----|-----|-----|-----|----|
| | OCA (OCH) | DA | DH | RVR(1) | RVR(2) | OCA (OCH) | MDA | MDH | RVR(1) | RVR(2) | OCA (OCH) | MDA | MDH | VH | Timing | FAP / THR 4.8 NM | | | | | | |
| A | 1330 (296) | 1330 (300) | | 600 | 1000 | 1471 (437) | 1480 (440) | | 900 | 1500 | 1597 (559) | 1600 (560) | 1500 | | | | | | | | | |
| B | 1339 (305) | 1340 (310) | | 600 | 1000 | | | | | 1000 | 1500 | 1603 (565) | 1610 (570) | 1600 | | | | | | | | |
| C | 1349 (315) | 1350 (320) | | 600 | 1000 | | | | | 1000 | 1800 | 1701 (663) | 1710 (670) | 2400 | | | | | | | | |
| D | 1359 (325) | 1360 (330) | | 650 | 1200 | | | | | 1400 | 2000 | 1971 (933) | 1980 (940) | 3600 | | | | | | | | |
| Notes : - (1) With approach lights - (2) Without approach lights - (3) Daytime only - OCH and MDH AAL | | | | | | | | | | | | | | | KT | MIN | SEC | KT | MIN | SEC | | |
| | | | | | | | | | | | | | | | 100 | 3 | Min | 12 | 140 | 2 | Min | 03 |
| | | | | | | | | | | | | | | | 110 | 2 | Min | 37 | 160 | 1 | Min | 55 |
| | | | | | | | | | | | | | | | 120 | 2 | Min | 24 | 170 | 1 | Min | 42 |
| | | | | | | | | | | | | | | | 130 | 2 | Min | 13 | 180 | 1 | Min | 36 |

CORRECTIONS : NDB « OUA » withdrawn - MAPt LOC only definition.



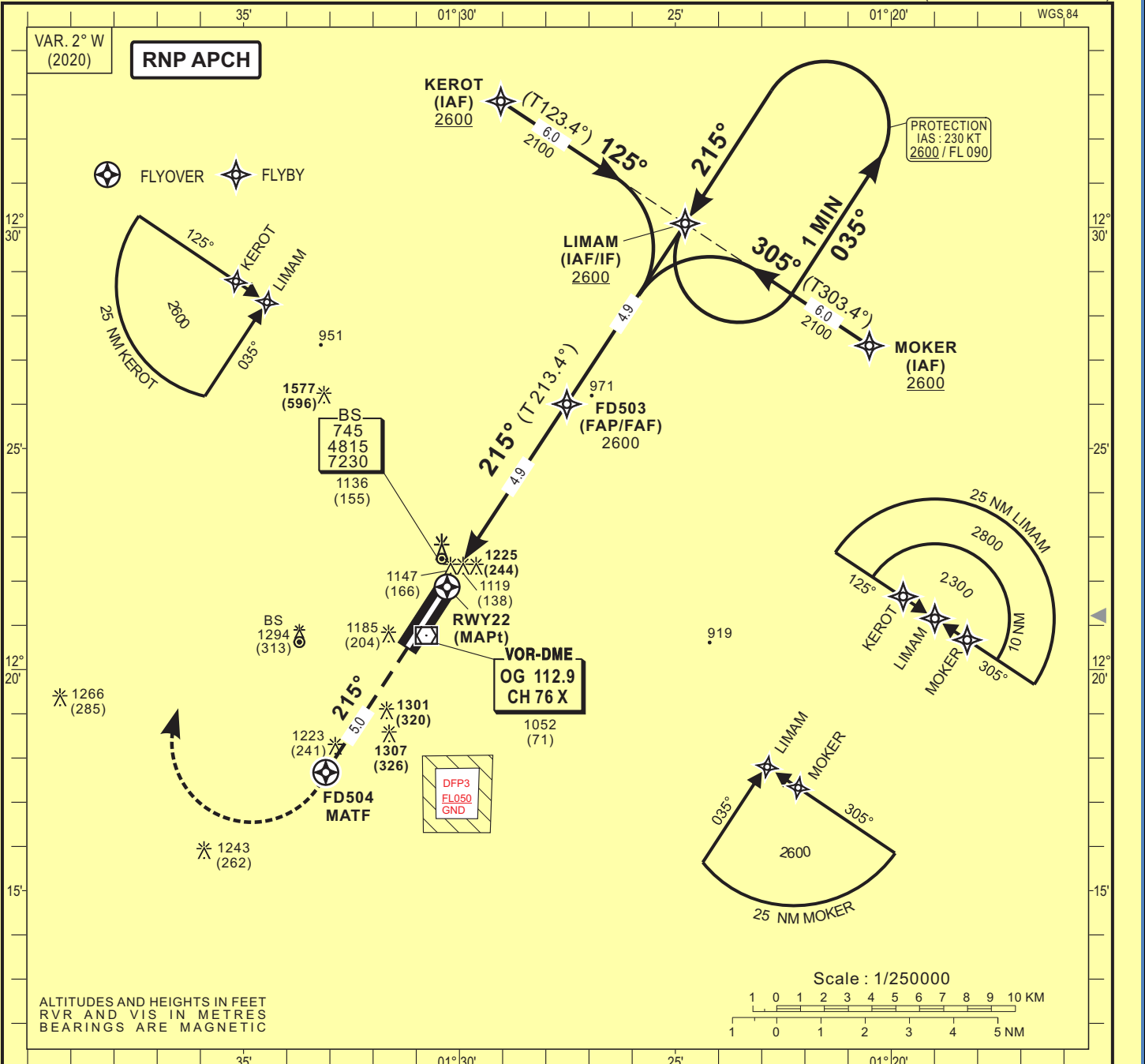
| | | | | | |
|----------------------|---------|------|------|------|----------------------------|
| Distance to THR (NM) | FAP/FAF | 4 | 3 | 2 | TRANSITION ALTITUDE : 3600 |
| Altitude (ft) | 2600 | 2360 | 2040 | 1720 | |



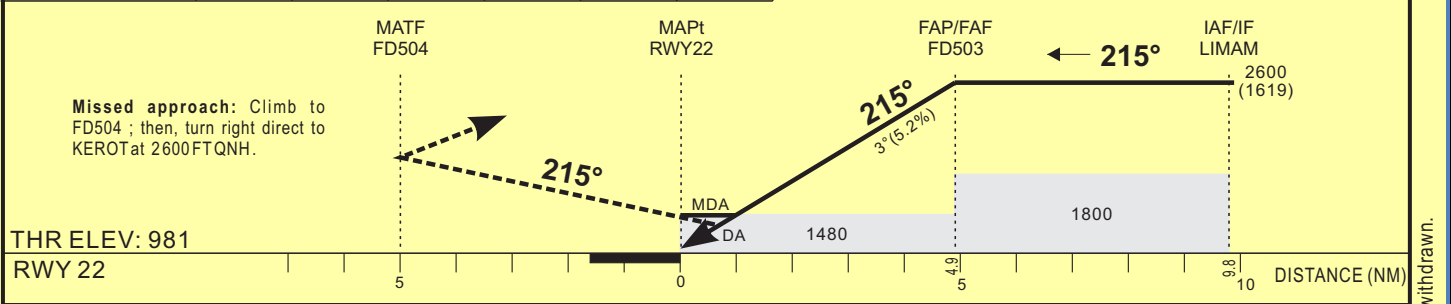
| CAT | LNAV/VNAV | | | | LNAV | | | | Circling (3) | | | | RVR for take-off CATA - B - C - D : 400 |
|-----|------------|------------|----|---------------|------------|------------|-----------|---------------|--------------|------------|---------------------------|------|---|
| | OCA (OCH) | DA | DH | RVR(1) RVR(2) | OCA (OCH) | MDA | MDH | RVR(1) RVR(2) | OCA (OCH) | MDA | MDH | VH | |
| A | 1429 (395) | 1430 (400) | | 900 1500 | 1547 (513) | 1550 (520) | | 900 1500 | 1597 (559) | 1600 (560) | | 1500 | Timing FAP/FAF - THR 4.8 NM KT MIN SEC KT MIN SEC |
| B | 1441 (407) | 1440 (410) | | 1000 1500 | | | 1000 1500 | 1603 (565) | 1610 (570) | 1600 | 110 2 Min 37 160 1 Min 48 | | |
| C | 1449 (415) | 1450 (420) | | 1000 1800 | | | 1000 1800 | 1701 (663) | 1710 (670) | 2400 | 120 2 Min 24 170 1 Min 42 | | |
| D | 1459 (425) | 1460 (430) | | 1400 2000 | | | 1400 2000 | 1971 (933) | 1980 (940) | 3600 | 130 2 Min 13 180 1 Min 36 | | |

Notes :
 - (1) With approach lights
 - (2) Without approach lights
 - Minimum temperature: 10°C
 - (3) Daytime only
 - OCH and MDH AAL

CORRECTIONS : NDB « OUA » withdrawn.



| | | | | | |
|----------------------|------|------|------|---------|----------------------------|
| Distance to THR (NM) | 2 | 3 | 4 | FAP/FAF | TRANSITION ALTITUDE : 3600 |
| Altitude (ft) | 1670 | 1990 | 2310 | 2600 | |



| CAT | LNAV/VNAV | | | | LNAV | | | | Circling (1) | | | | RVR for takeoff: | |
|-----|------------|------------|-----|------|------------|------------|-----|------|--------------|------------|------|----|------------------|-------|
| | OCA (OCH) | MDA | MDH | RVR | OCA (OCH) | MDA | MDH | RVR | OCA (OCH) | MDA | MDH | VH | CAT A - B - C | CAT D |
| A | 1356 (375) | 1360 (380) | | 1500 | | | | 1500 | 1597 (559) | 1600 (560) | 1500 | | 400 | 400 |
| B | 1365 (384) | 1370 (390) | | 1500 | 1471 (490) | 1480 (490) | | 1500 | 1603 (565) | 1610 (570) | 1600 | | | |
| C | 1376 (395) | 1380 (400) | | 1800 | | | | 1800 | 1701 (663) | 1710 (670) | 2400 | | | |
| D | 1384 (403) | 1390 (410) | | 2000 | | | | 2000 | 1971 (933) | 1980 (940) | 3600 | | | |

| Timing FAP/FAF - THR 4.9 NM | | | | | |
|-----------------------------|-----|-----|-----|-----|-----|
| KT | MIN | SEC | KT | MIN | SEC |
| 90 | 3 | 16 | 140 | 2 | 06 |
| 100 | 2 | 56 | 150 | 1 | 58 |
| 110 | 2 | 40 | 160 | 1 | 50 |
| 120 | 2 | 27 | 170 | 1 | 44 |
| 130 | 2 | 16 | 180 | 1 | 38 |

Notes: - (1) Daytime only
- OCH and MDH AAL
- Minimum temperature: 10°C

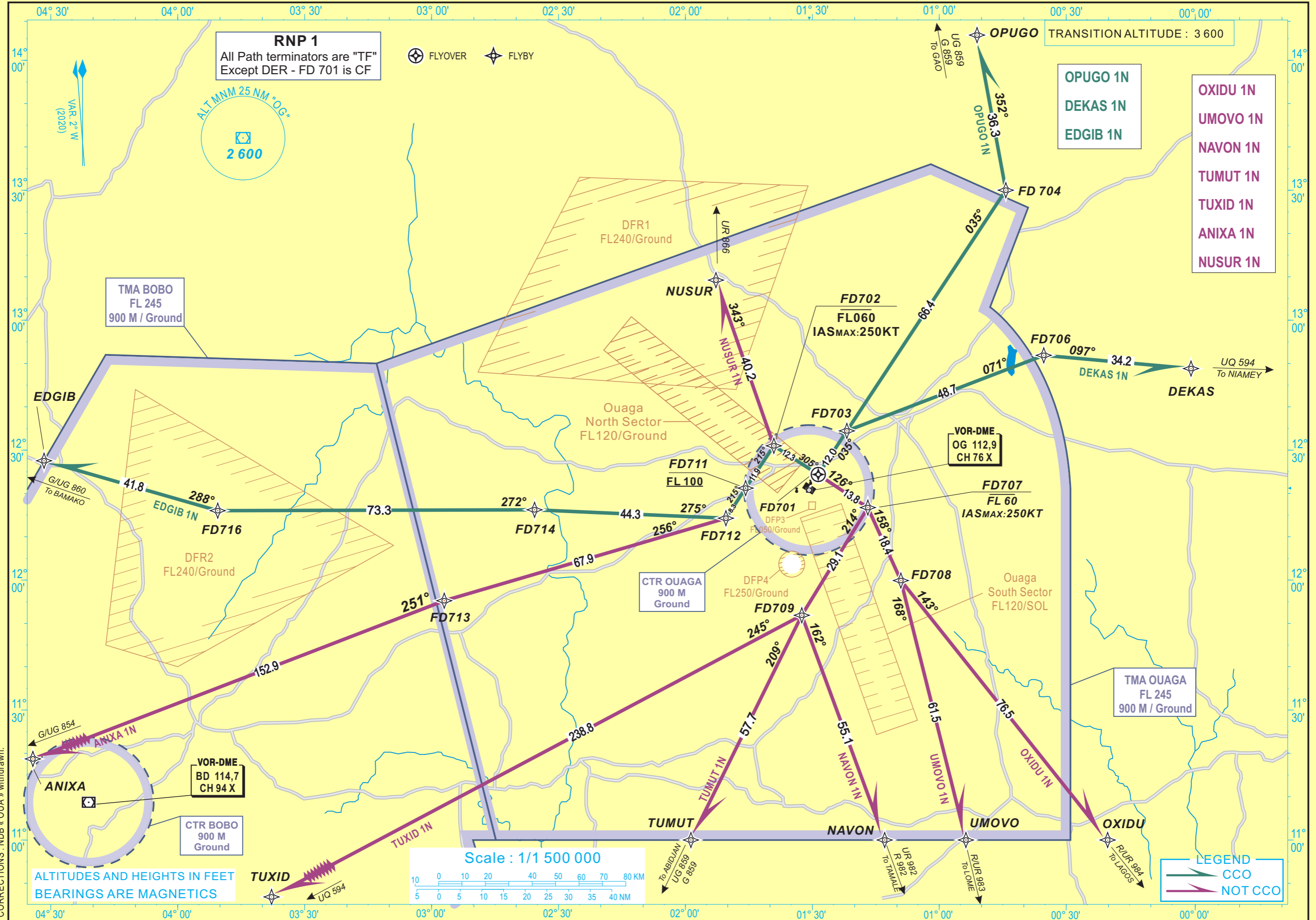
CORRECTIONS : NDB « OUA » withdrawn.

STANDARD DEPARTURE CHART
INSTRUMENTS (SID) - ICAO

ELEV. : 1038
THR : 1034
HEIGHTS RELATED TO THR AERODROME ELEVATION

OUAGA CONTROL 120.3
OUAGA TWR 118.1

OUAGADOUGOU (DFFD)
SID RNAV (GNSS) - RWY 04



STANDARD ARRIVAL CHART - INSTRUMENTS (STAR) - ICAO

ELEV. : 1038
 THR : 1034
 HEIGHTS RELATED TO AERODROME ELEVATION

OUAGA CONTROL 120.3
 OUAGA TWR 118.1

OUAGADOUGOU (DFFD)
 STAR RNAV - RWY 04

TRANSITION ALTITUDE : 3 600

PROCEDURE TO BE USED ACCORDING TO AIC NR 02 / A / 2002 DAKAR - 21 MARCH 2002

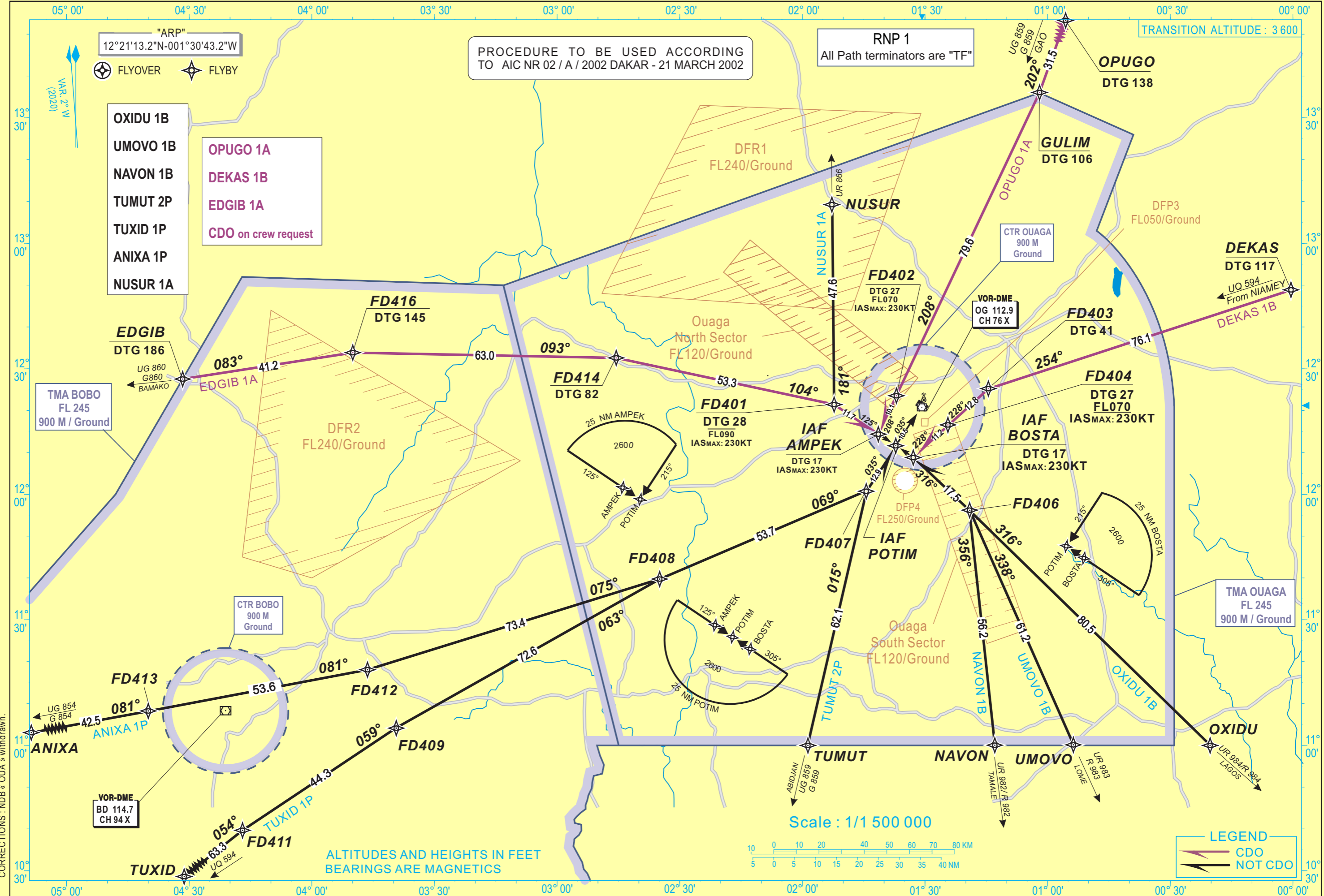
RNP 1
 All Path terminators are "TF"

"ARP"
 12°21'13.2"N-001°30'43.2"W

FLYOVER FLYBY

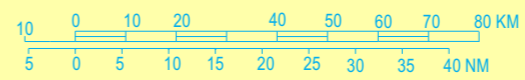
- OXIDU 1B
- UMOVO 1B
- NAVON 1B
- TUMUT 2P
- TUXID 1P
- ANIXA 1P
- NUSUR 1A

- OPUGO 1A
- DEKAS 1B
- EDGIB 1A
- CDO on crew request



CORRECTIONS : NDB « OUA » withdrawn.

ALTITUDES AND HEIGHTS IN FEET
 BEARINGS ARE MAGNETICS



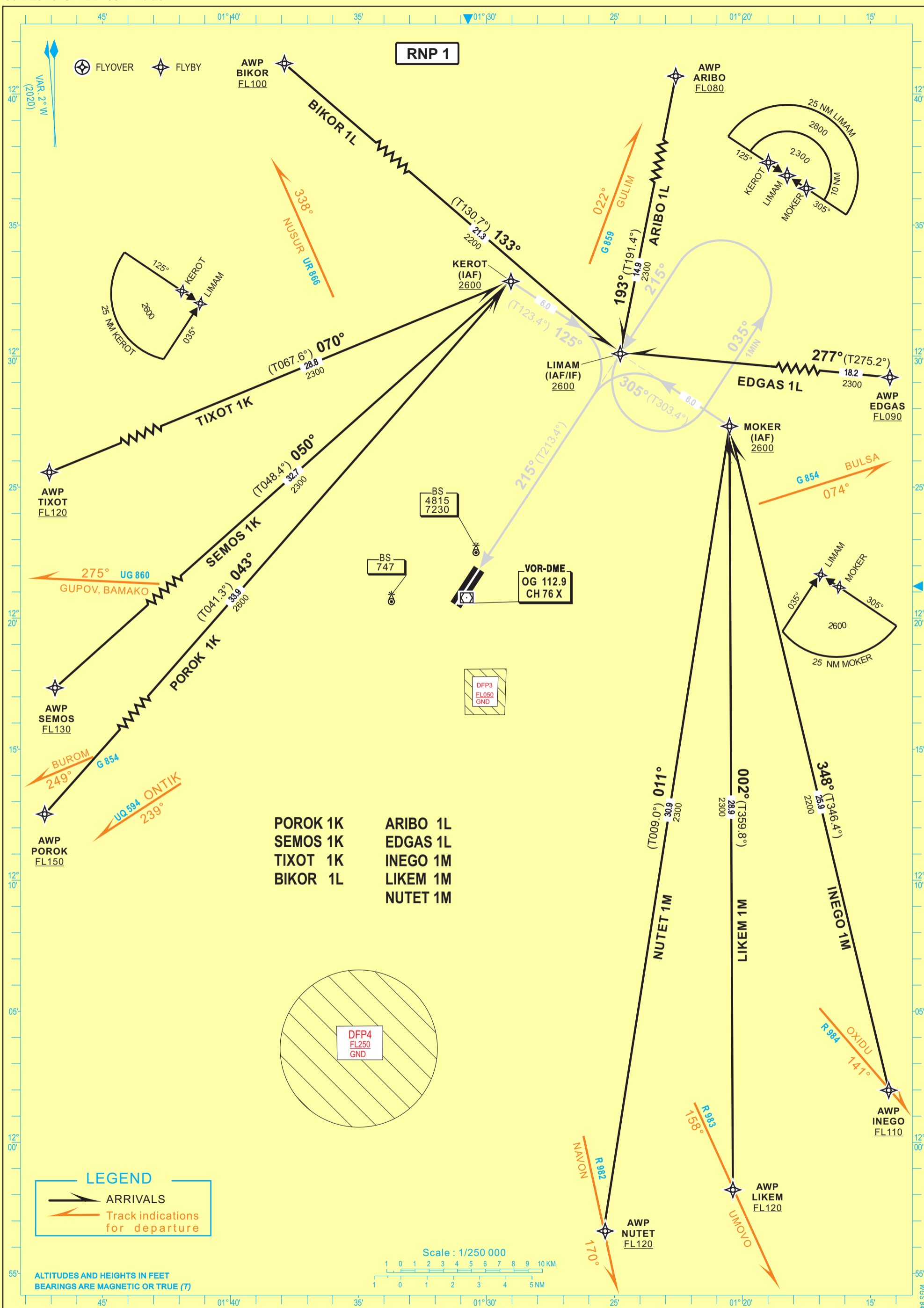
LEGEND
 CDO
 NOT CDO

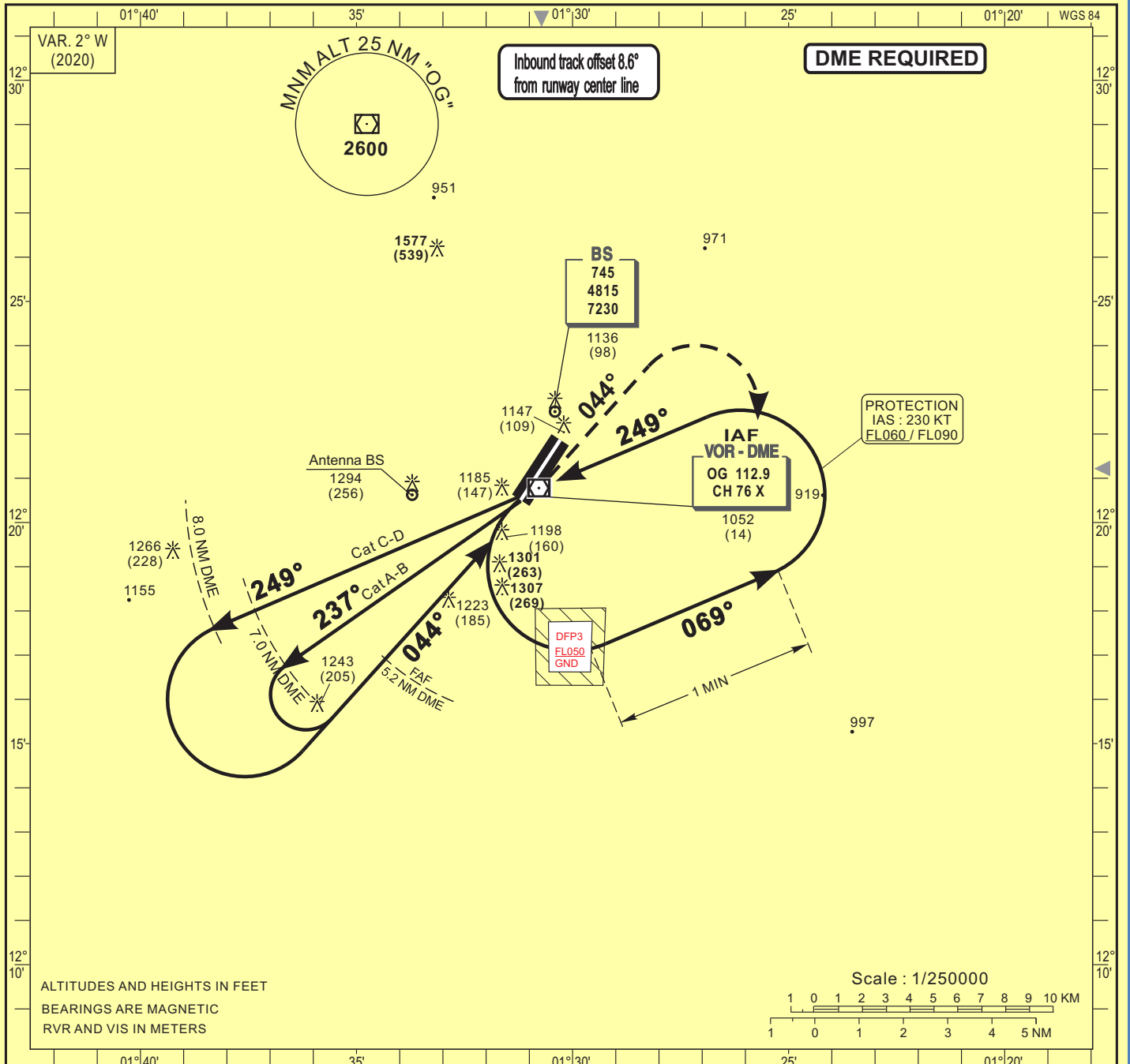
CORRECTIONS : NDB « OUA » withdrawn.

02AD2-DFPD-STAR-RNAV22

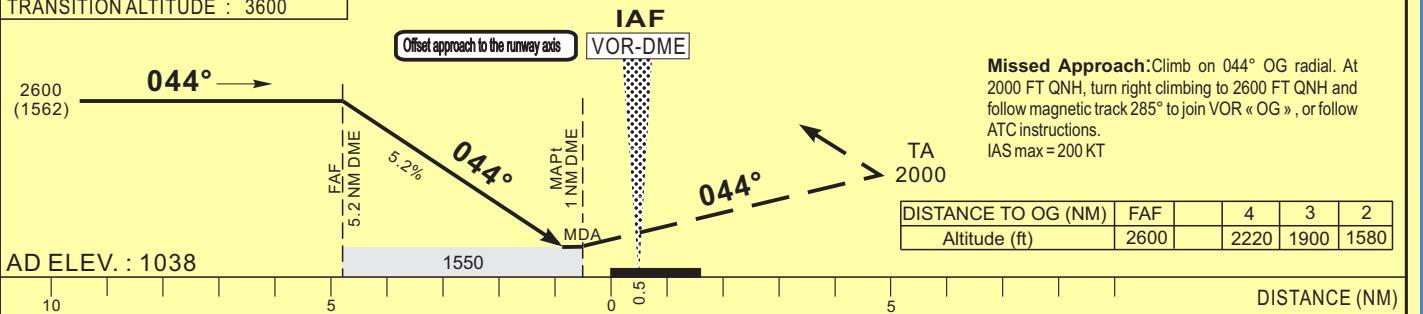
AERONAUTICAL INFORMATION SERVICE - ASECNA

23 JANUARY 2025





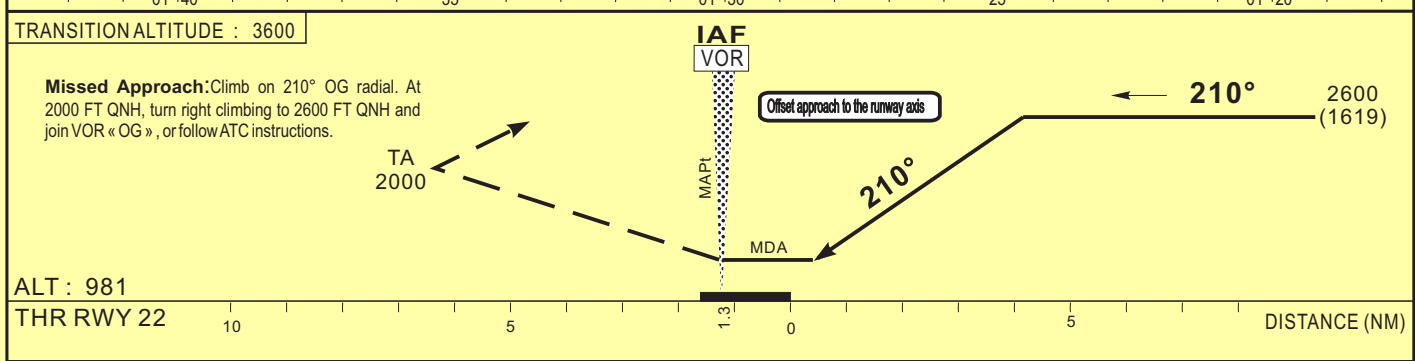
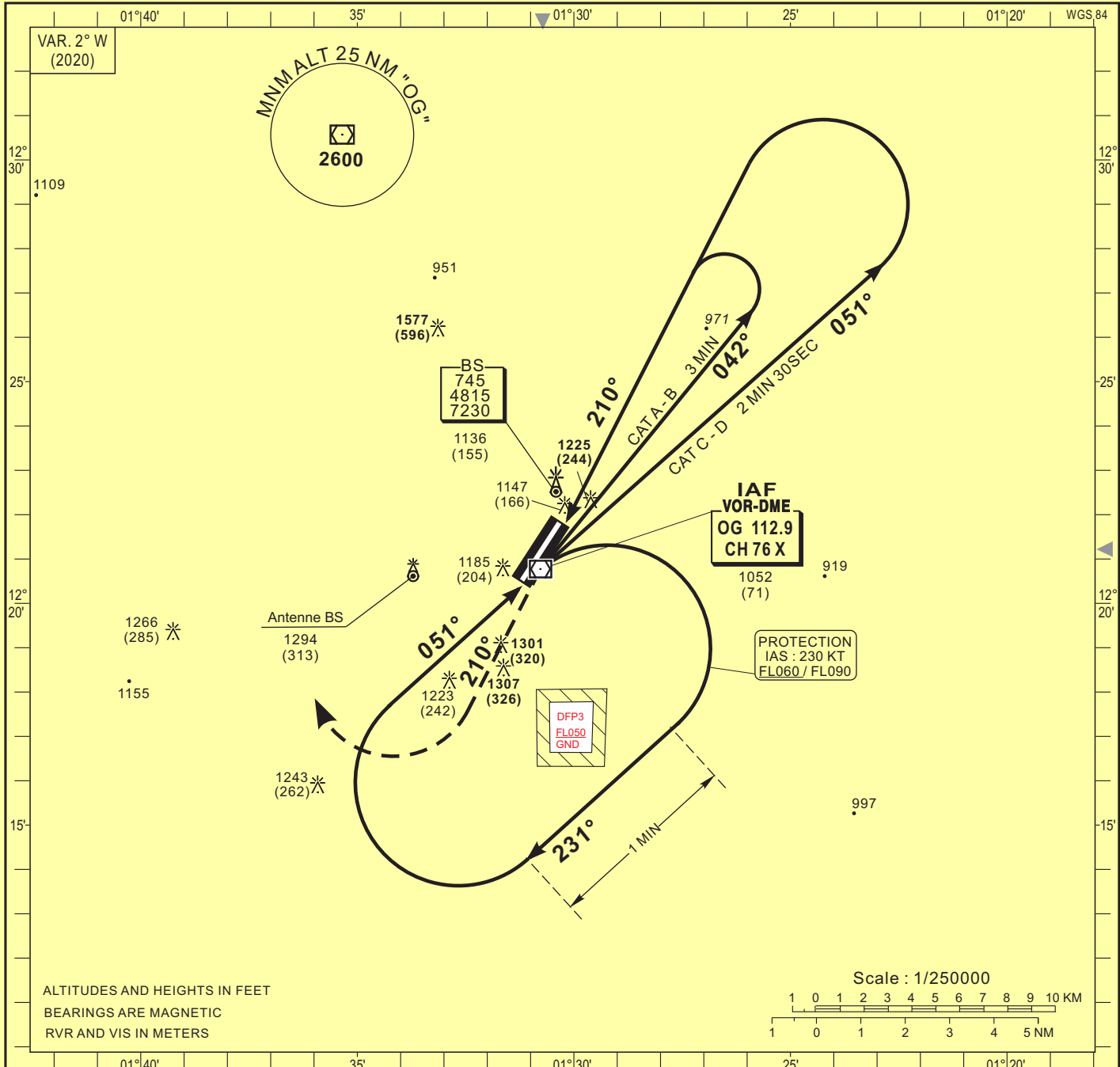
TRANSITION ALTITUDE : 3600



CORRECTIONS : NDB « OUA » withdrawn.

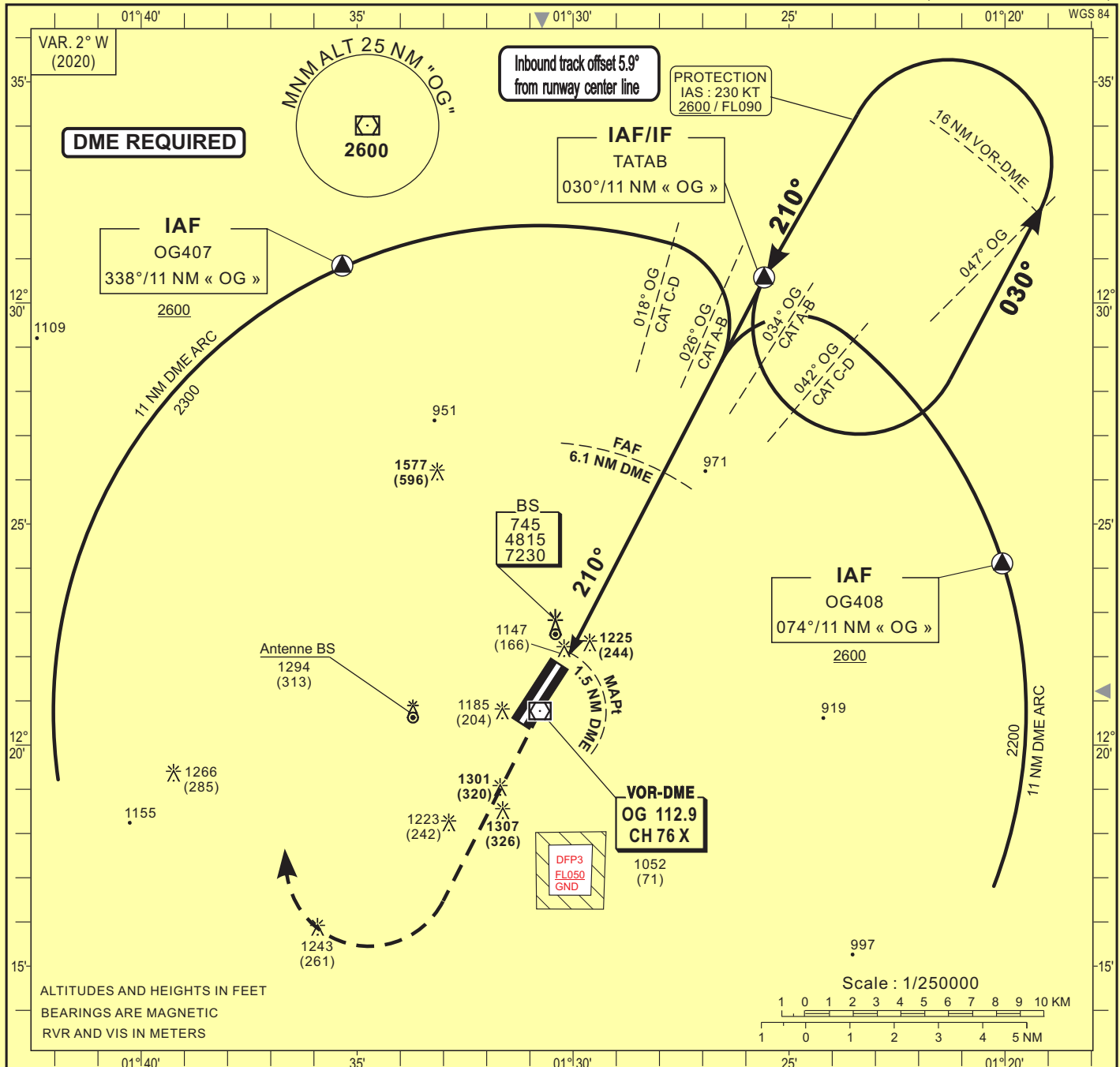
| CAT | VOR-DME | | | | CIRCLING (3) | | | | RVR for take-off CAT A - B - C - D : 400 | | | | | | | |
|-----|------------|------------|-----|--|--------------|--------|------------|------------|---|----|----------------------------|-----|-----|-----|-----|-----|
| | OCA (OCH) | MDA | MDH | | RVR(1) | RVR(2) | OCA (OCH) | MDA | MDH | VH | Timing FAF / THR 4.8 NM | | | | | |
| A | | | | | 900 | 1500 | 1597 (559) | 1600 (560) | 1500 | | KT | MIN | SEC | KT | MIN | SEC |
| B | 1547 (509) | 1550 (510) | | | 1000 | 1500 | 1603 (565) | 1610 (570) | 1600 | | 90 | 2 | 48 | 140 | 1 | 48 |
| C | | | | | 1000 | 1800 | 1701 (663) | 1710 (670) | 2400 | | 100 | 2 | 31 | 150 | 1 | 41 |
| D | | | | | 1400 | 2000 | 1971 (933) | 1980 (940) | 3600 | | 110 | 2 | 17 | 160 | 1 | 34 |
| | | | | | | | | | | | 120 | 2 | 06 | 170 | 1 | 29 |
| | | | | | | | | | | | 130 | 1 | 56 | 180 | 1 | 24 |

Notes : - (1) With approach lights - (2) Without approach lights
- (3) Daytime only - OCH and MDH AAL

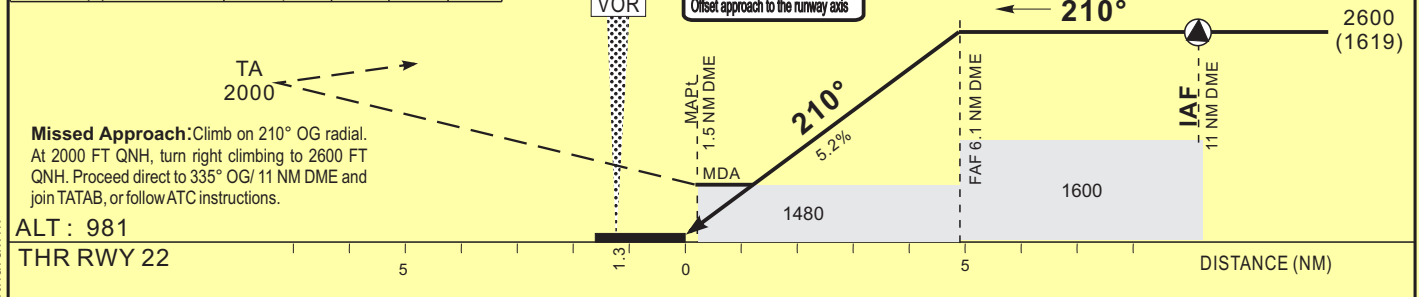


| CAT | VOR | | | Circling (1) | | | | RVR for take-off CATA - B - C - D : 400 | | | | |
|--|------------|------------|------|--------------|------------|------|------|--|--------|-----|--|--|
| | OCA (OCH) | MDA | MDH | RVR | OCA (OCH) | MDA | MDH | VH | Timing | | | |
| A | 1520 (539) | 1520 (540) | 1500 | 1597 (559) | 1600 (560) | 1500 | 2400 | 3600 | 90 | 140 | | |
| B | | | 1500 | 1603 (565) | 1610 (570) | 1600 | | | 100 | 150 | | |
| C | | | 2000 | 1701 (663) | 1710 (670) | 2400 | | | 110 | 160 | | |
| D | | | 2000 | 1971 (933) | 1980 (940) | 3600 | | | 120 | 170 | | |
| Notes : (1) Daytime only - OCH and MDH AAL | | | | | | | | | | | | |
| | | | | | | | | | 130 | 180 | | |

CORRECTIONS : NDB « OUA » withdrawn.



| | | | | |
|---------------------|------|------|------|------|
| DISTANCE TO OG (NM) | FAF | 4 | 3 | 2 |
| Altitude (ft) | 2600 | 2220 | 1900 | 1580 |



| CAT | VOR-DME | | | | Circling (1) | | | | RVR for take-off CAT A - B - C - D : 400 |
|-----|------------|------------|-----|------|--------------|------------|------|----|---|
| | OCA (OCH) | MDA | MDH | RVR | OCA (OCH) | MDA | MDH | VH | |
| A | | | | 1500 | 1597 (559) | 1600 (560) | 1500 | | Temps FAF / MAPt 4.7 NM KT MIN SEC KT MIN SEC 90 3 Min 08 140 2 Min 01 100 2 Min 49 150 1 Min 53 110 2 Min 34 160 1 Min 46 120 2 Min 21 170 1 Min 40 130 2 Min 10 180 1 Min 34 |
| B | 1471 (490) | 1480 (490) | | 1500 | 1603 (565) | 1610 (570) | 1600 | | |
| C | | | | 1800 | 1701 (663) | 1710 (670) | 2400 | | |
| D | | | | 2000 | 1971 (933) | 1980 (940) | 3600 | | |

Notes : (1) Daytime only - OCH and MDH AAL

CORRECTIONS : NDB « OUA » withdrawn.

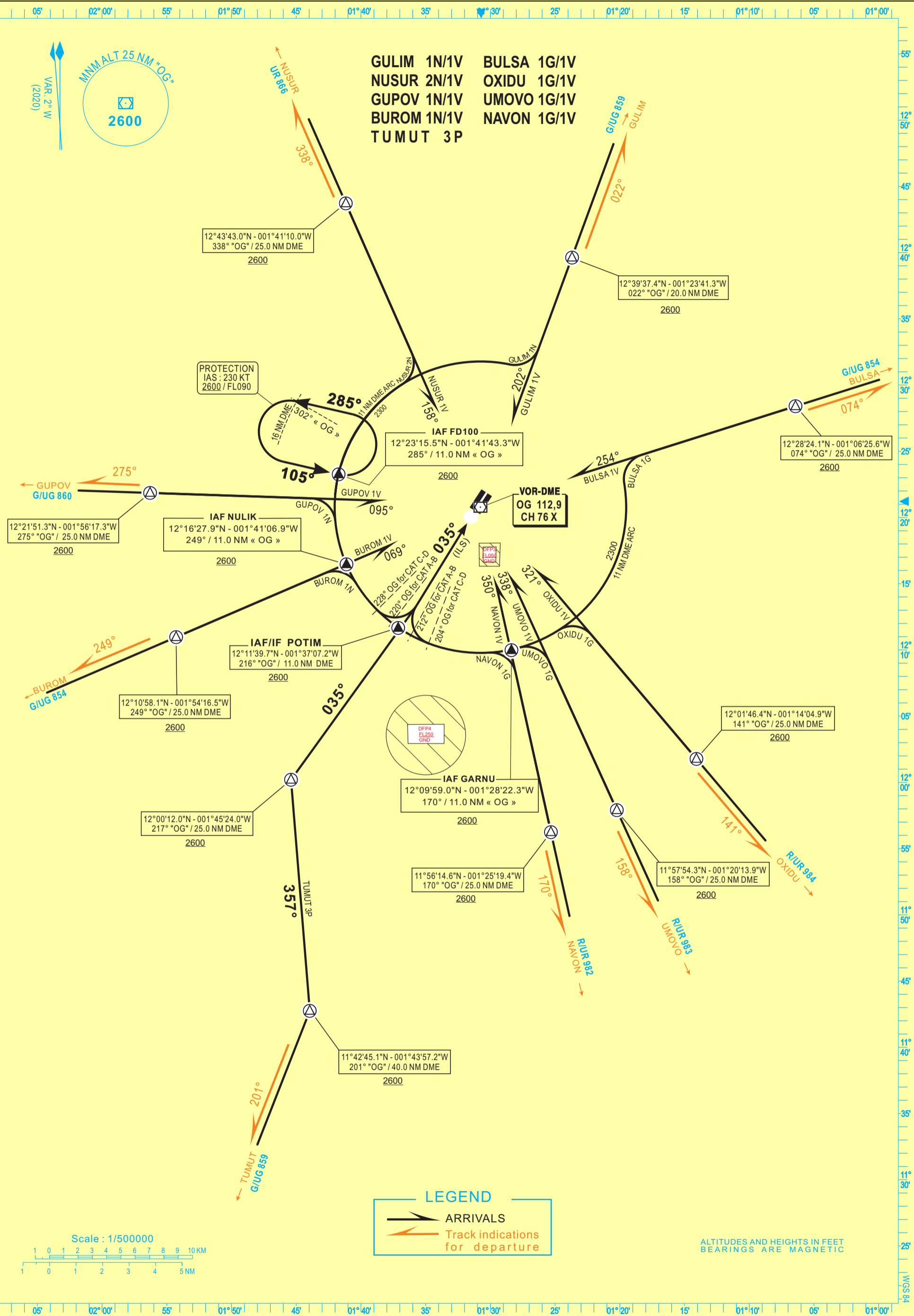
STANDARD ARRIVAL CHART
INSTRUMENT (STAR) - ICAO

TRANSITION ALTITUDE
3600

APP
120.3
TWR
118.1

OUGADDOUGOU (DFFD)
RWY 04

CORRECTIONS : NDB « OUA » withdrawn.



02AD2-DFFD-STAR-VORDME04

AERONAUTICAL INFORMATION SERVICE - ASECNA

23 JANUARY 2025



CORRECTIONS : NDB « OUA » withdrawn.

02AD2-DFPD-STAR-VORDME22

AERONAUTICAL INFORMATION SERVICE - ASEENA

23 JANUARY 2025

