

Phone : +(221) 77.519.79.01
+(221) 33.957.49.37
Fax : +(221) 33.820.06.00
AFTN : GOOYNYX
E-mail : dakarbni@asecna.org
Web : <https://aim.asecna.aero>



AIRAC AIP SUP
NR 21/B/23GO
NOVEMBER 30, 2023

BUREAU NOTAM INTERNATIONAL DE L'OUEST AFRICAIN
B.P. 8155 Aéroport International Blaise DIAGNE Dakar/Diass-SENEGAL

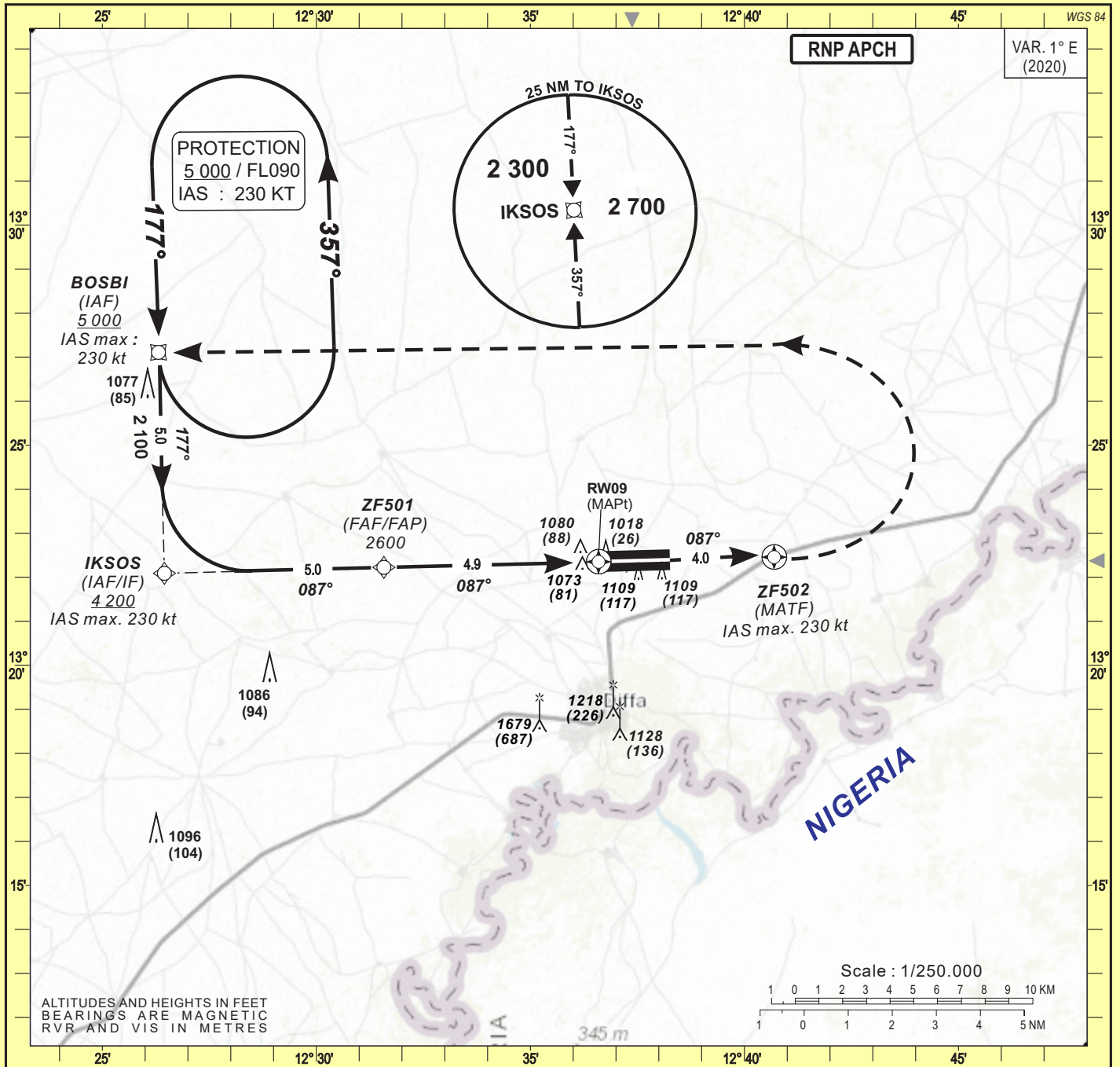
BENIN – BURKINA FASO – COTE D'IVOIRE – GUINEE BISSAU – MALI – MAURITANIE – NIGER – SENEGAL – TOGO

**CARTE D'APPROCHE ET TABLEAU DE PROPOSITION DE CODAGE
DE LA PROCEDURE RNP RWY09 DE L'AERODROME DE DIFFA**

**APPROACH CHART AND PROPOSAL CODING TABLE FOR THE RNP
RWY09 PROCEDURE OF DIFFA AERODROME**

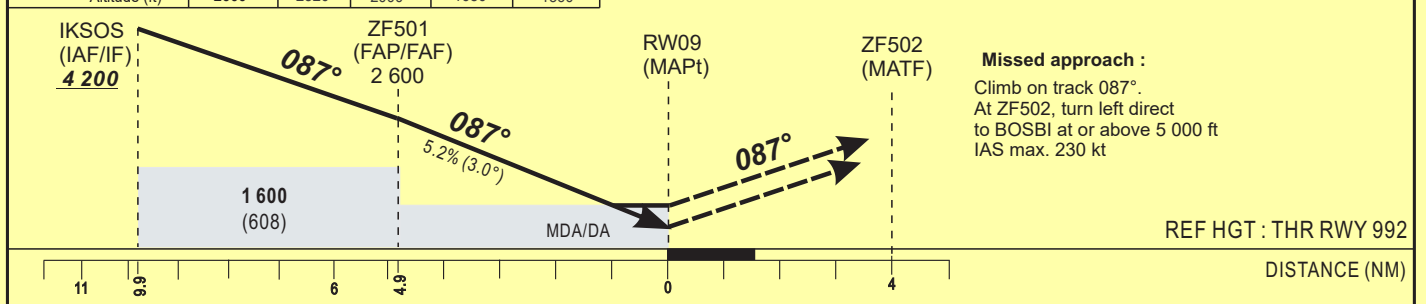
DRZF
/
NIGER

Mise en vigueur / Effective Date	28 décembre 2023, december <i>28 2023</i>
Validité / Validity	Perm



Distance to THR 09 (NM)	4	3	2	1	
Altitude (ft)	2600	2320	2000	1680	1360

TRANSITION ALTITUDE : 4 000



CAT	LNAV/VNAV				LNAV			CIRCLING(1)			RVR for take-off CATA - B - C : 400			
	OCA (OCH)	DA	DH	RVR	OCA (OCH)	MDA	MDH	RVR	OCA (OCH)	MDA	MDH	VIS	Timing	FAF / THR
A	1210 (218)	1250 (250)		1000	1326 (334)	1330 (340)		1500	1423 (431)	1430 (440)		1500		
B	1222 (230)	1250 (250)		1000	1326 (334)	1330 (340)		1500	1423 (431)	1500 (500)		1600		
C	1230 (238)	1250 (250)		1000	1326 (334)	1330 (340)		1800	2073 (1081)	2080 (1090)		2400		

KT	MIN	SEC	KT	MIN	SEC
90	3	16	140	2	06
100	2	56	150	1	58
110	2	40	160	1	50
120	2	27	170		
130	2	16	180		

Notes : - (1) Daytime only. OCH and MDH AAL
- RDH: 15 m
- Minimum temperature : 10°

TABULAR DESCRIPTION

RNP RWY 09

Serial Number	Path Descriptor	Waypoint Identifier	Fly-Over	Course °M(°T)	Magnetic Variation	Distance (NM)	Turn Direction	Altitude (ft)	Speed limit (Kt)	VPA/TC H	Navigation Specification
10	IF	BOSBI	—	—	—	—	—	+5000	-230	—	RNP APCH
20	TF	IKSOS	—	177(178.4)	—	5.0	—	+4200	-230	—	RNP APCH
10	IF	IKSOS	—	—	—	—	—	+4200	-230	—	RNP APCH
20	TF	ZF501	—	087(088.4)	—	5.0	—	@2600	—	—	RNP APCH
30	TF	RW09	Y	087(088.4)	1.0	4.9	—	@1042	—	-3/15	RNP APCH
10	IF	RW09	Y	—	1.0	—	—	—	—	—	RNP APCH
20	TF	ZF502	Y	087(088.4)	—	4.0	—	—	-230	—	RNP APCH
30	DF	BOSBI	—	—	—	—	L	+5000	-230	—	RNP APCH
10	IF	BOSBI	—	—	—	—	—	+5000	-230	—	RNP APCH
20	HM	BOSBI	—	177(178.4)	—	—	L	+5000	-230	—	RNP APCH

WAYPOINTS LIST

RNP RWY 09

Waypoint Identifier	Coordinates	
BOSBI	13°27'06.392"N	012°26'18.643"E
IKSOS	13°22'05.186"N	012°26'27.019"E
ZF501	13°22'13.333"N	012°31'34.656"E
RW09	13°22'21.209"N	012°36'35.872"E
ZF502	13°22'27.570"N	012°40'41.990"E