

AGENCE POUR LA SÉCURITÉ DE LA NAVIGATION AÉRIENNE EN AFRIQUE ET A MADAGASCAR

Phone : +(221) 33.957.49.17
 +(221) 77.519.79.01
Fax : +(221) 33.820.06.00
AFTN : GOOOYNYX
E-mail : bnidakar@asecna.org
Web : https:ais.asecna.aero



AIP SUP
NR 99/A/21GO

22 october 2021

BUREAU NOTAM INTERNATIONAL DE L'OUEST AFRICAIN
B.P. 8155 Aéroport International Blaise DIAGNE Dakar/Diass – SENEGAL

BENIN – BURKINA FASO – COTE D'IVOIRE – GUINEE BISSAU – MALI – MAURITANIE – NIGER – SENEGAL – TOGO

MISE A JOUR DES PROCEDURES D'APPROCHE AUX INSTRUMENTS RNAV ET ILS ALIGNEES SUR LES NOUVEAUX VOR ET ILS DE L'AERODROME DE NIAMEY

UPDATE OF RNAV AND ILS INSTRUMENT APPROACH PROCEDURES ALIGNED ON THE VOR AND ILS NEW POSITIONS AT NIAMEY AERODROME.

/
NIGER

Mise en vigueur/effective Date	22 OCTOBRE à 0000 TU / 22th OCTOBER at 0000UTC
Validité/Validity	24 FEVRIER à 0000 TU / 24th FEBRUARY at 0000UTC

Suite au déplacement des aides à la navigation VOR et LOC de Niamey, les procédures d'approche RNAV et ILS de Niamey sont mises à jour pour tenir compte de leur positionnement dans les opérations d'atterrissage et de décollage sur la piste 09R / 27L de 3000m.	<i>Further to the relocation of the VOR and LOC navigation aids from Niamey, the RNAV and ILS approach procedures from Niamey are updated to take into account their positioning in the landing and take-off operations on runway 09R / 27L of 3000m.</i>
Les 800m d'extension de piste comptés à partir du THR 27L sont encore inutilisables pendant cette période	<i>The 800m of runway extension counted from THR 27L is still unusable during this period</i>

CE SUP AIP COMPREND 01 PAGE ET 05 APPENDICES

THIS AIP SUP INCLUDES 01 PAGE AND 05 APPENDICES

12AD2-DRRN-IAC-ILS09R
12AD2-DRRN-IAC-RNP09R
12AD2-DRRN-IAC-RNP09R-DATA
12AD2-DRRN-IAC-RNP27L
12AD2-DRRN-IAC-RNP27L-DATA

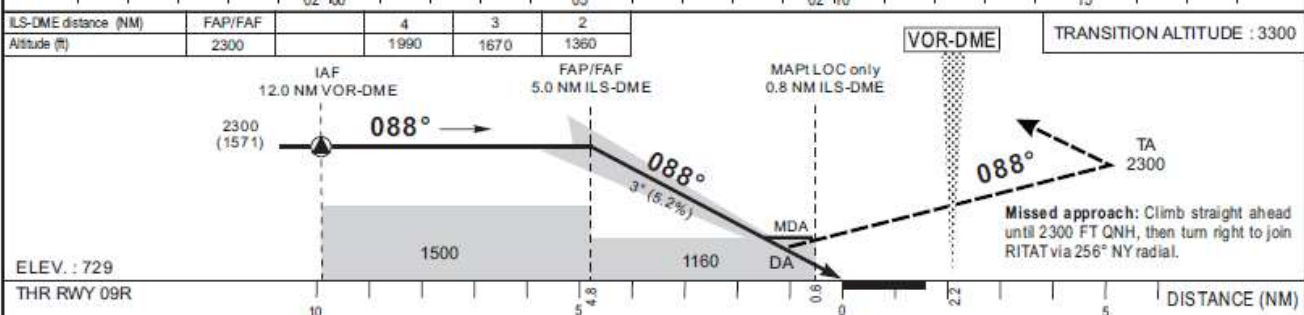
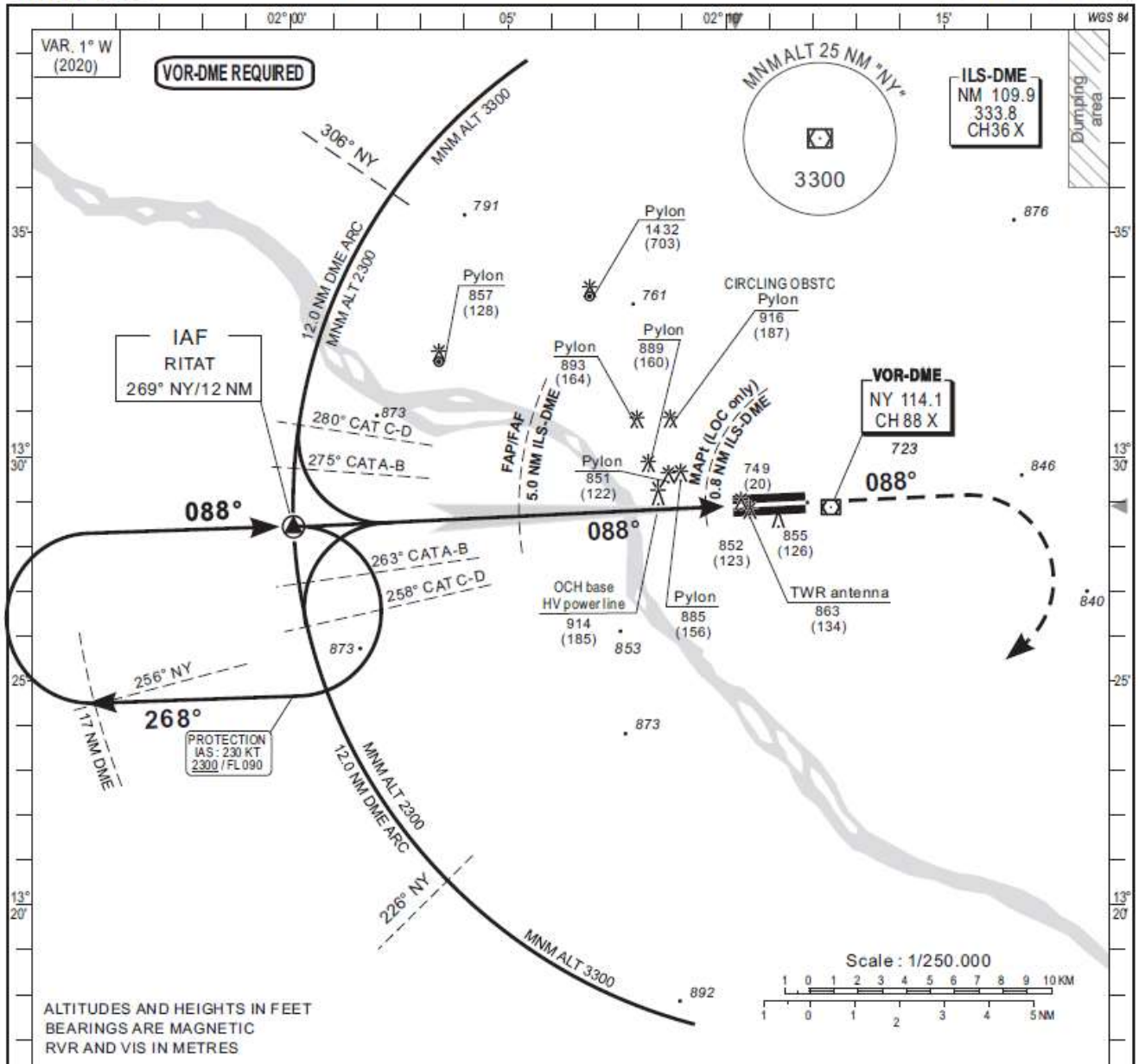
FIN / END

**INSTRUMENT
APPROACH
CHART-ICAO**

AERODROME ELEV 732 FT
HEIGHTS RELATED TO THR RWY09R - ELEV 729 FT

APP 131.3
TWR 119.7

NIAMEY / Diiori Hamani (DRRN)
ILS or LOC - RWY 09R
(ACFT CAT A, B, C, D)



CAT	CAT.1				LOC				CIRCLING (3)			RVR for take-off: CAT A - B - C - D : 400	
	OCA (OCH)	DA	DH	RVR(1) RVR(2)	OCA (OCH)	MDA	MDH	RVR(1) RVR(2)	OCA (OCH)	MDA	MDH		VIS
A	888 (159)			900 1500	1160 (431)	1160	(440)	900 1500	1211 (479)	1220	(480)	1500	Timing FAP-FAF / MAPt 4.0 NM KT MIN SEC KT MIN SEC
B	900 (171)	930	(200)	1000 1500			1000 1500	1224 (492)	1230	(500)	1600	90 2 Min 40 140 1 Min 43	
C	909 (180)			1000 1800			1000 1800	1323 (591)	1330	(600)	2400	100 2 Min 24 150 1 Min 36	
D	919 (190)			1400 2000			1400 2000	1421 (689)	1430	(690)	3600	110 2 Min 11 160 1 Min 30	
													120 2 Min 00 170 1 Min 25
													130 1 Min 51 180 1 Min 20

Notes: (1) With approach line - Without approach line - (3) Daytime only

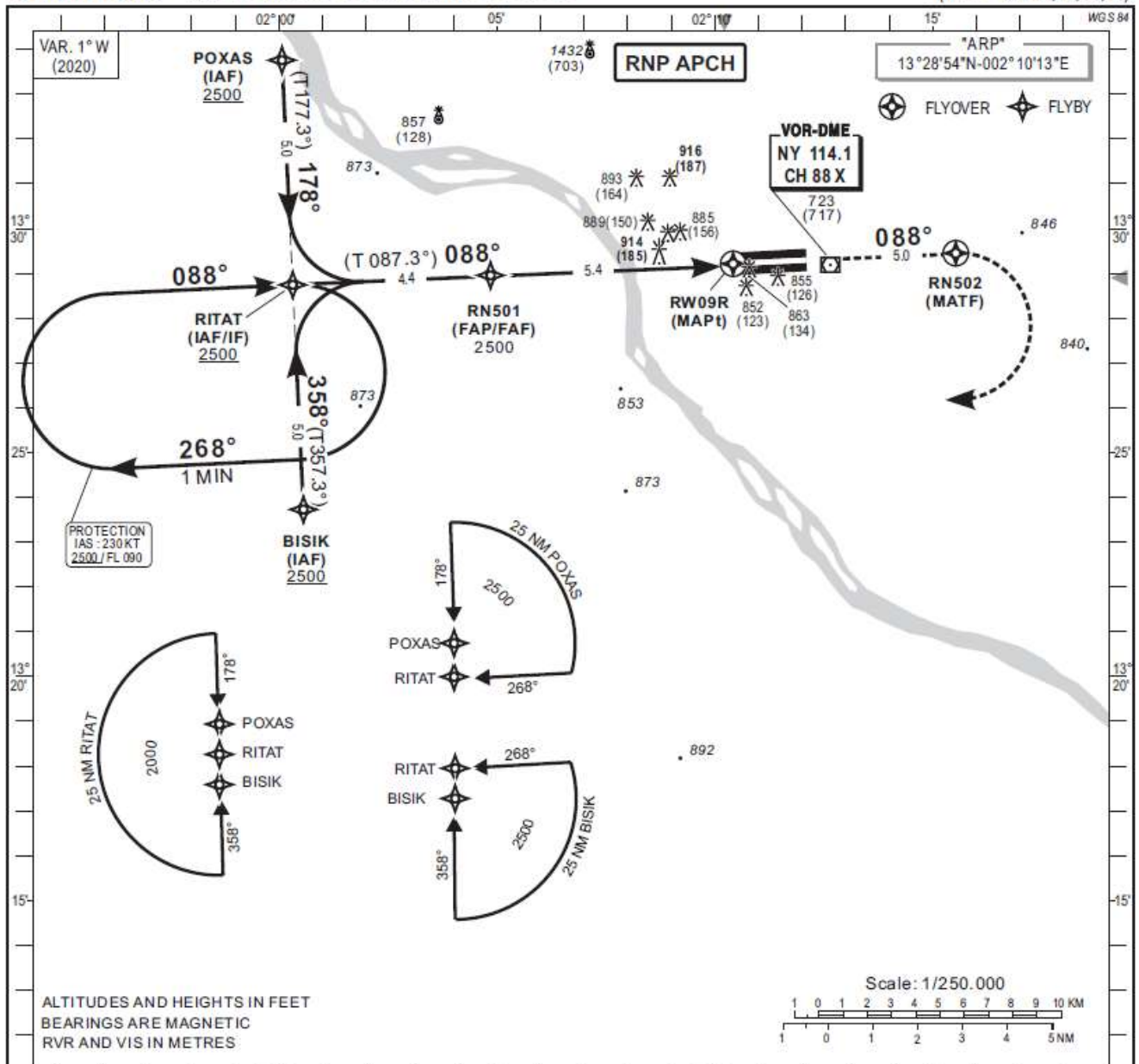
CORRECTIONS : New version.

**INSTRUMENT
APPROACH
CHART-ICAO**

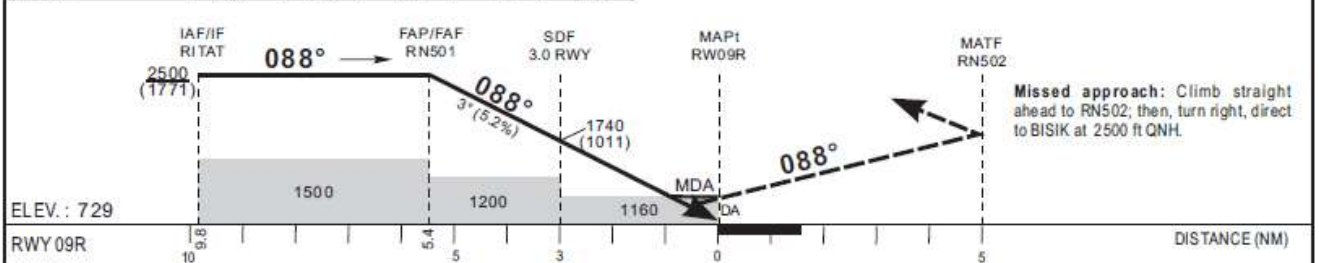
AERODROME ELEV 732 FT
HEIGHTS RELATED TO THR RWY09R - ELEV 729 FT

APP 131.3
TWR 119.7

NIAMEY / Diori Hamani (DRRN)
RNP - RWY 09R
(ACFT CATA, B, C, D)



Distance to THR (NM)	FAP/FAF	5	4	3	2
Altitude (ft)	2500	2380	2060	1740	1420



CAT	LNAV/VNAV					LNAV				CIRCLING (3)			RVR for take off CAT A - B - C - D : 400	
	OCA (OCH)	DA	DH	RVR(1)	RVR(2)	OCA (OCH)	MDA	MDH	RVR(1)	RVR(2)	OCA (OCH)	MDA		MDH
A	976 (248)	980 (250)	900	900	1500	1160 (431)	1160 (440)		900	1500	1211 (479)	1220 (480)	1500	Timing : FAF/THR: 5.4 NM
B	985 (256)	990 (260)	1000	1000	1500				1000	1500	1224 (492)	1230 (500)	1600	
C	993 (264)	1000 (270)	1000	1000	1800				1000	1800	1323 (591)	1330 (600)	2400	
D	1020 (291)	1020 (300)	1400	2000					1400	2000	1421 (689)	1430 (690)	3600	

Notes : - Minimum temperature: 10° - RDH : 15 m
 - (1) With approach lights - (2) Without approach lights
 - (3) OCH and MDHAAL - Daytime only

TABULAR DESCRIPTION

RNP RWY 09R

Serial Number	Path Descriptor	Waypoint Identifier	Fly- Over	Course °M(°T)	Magnetic Variation	Distance (NM)	Turn Direction	Altitude (ft)	Speed limit (Kt)	VPA / TCH	Navigation Specification
10	IF	POXAS	-					+2500	230	-	RNP APCH
20	TF	RITAT	-	178(177.3)		5.0		+2500	230	-	RNP APCH
10	IF	BISIK	-					+2500	230	-	RNP APCH
20	TF	RITAT	-	358(357.3)		5.0		+2500	230	-	RNP APCH
10	IF	RITAT	-					+2500	230	-	RNP APCH
20	TF	RN501	-	088(087.3)		4.4		@2500	-	-	RNP APCH
30	TF	RW09R	Y	088(087.3)	+1.0	5.4		@779	-	-3/15	RNP APCH
40	TF	RN502	Y	088(087.3)		5.0	R	-	-	-	RNP APCH
50	DF	BISIK	-					+2500	-	-	
10	IF	RITAT	-					+2500	230	-	RNP APCH
20	HM	RITAT	Y	088(087.3)			R	+2500	230	-	RNP APCH

RNP RWY 09R		
Waypoint Identifier	Coordinates	
POXAS	13°33'26.500"N	001°59'50.100"E
RITAT	13°28'25.600"N	002°00'04.900"E
BISIK	13°23'24.600"N	002°00'19.600"E
RN501	13°28'38.300"N	002°04'37.100"E
RW09R	13°28'53.800"N	002°10'09.900"E
RN502	13°29'08.000"N	002°15'17.400"E

INSTRUMENT APPROACH CHART-ICAO

AERODROME ELEV 732 FT

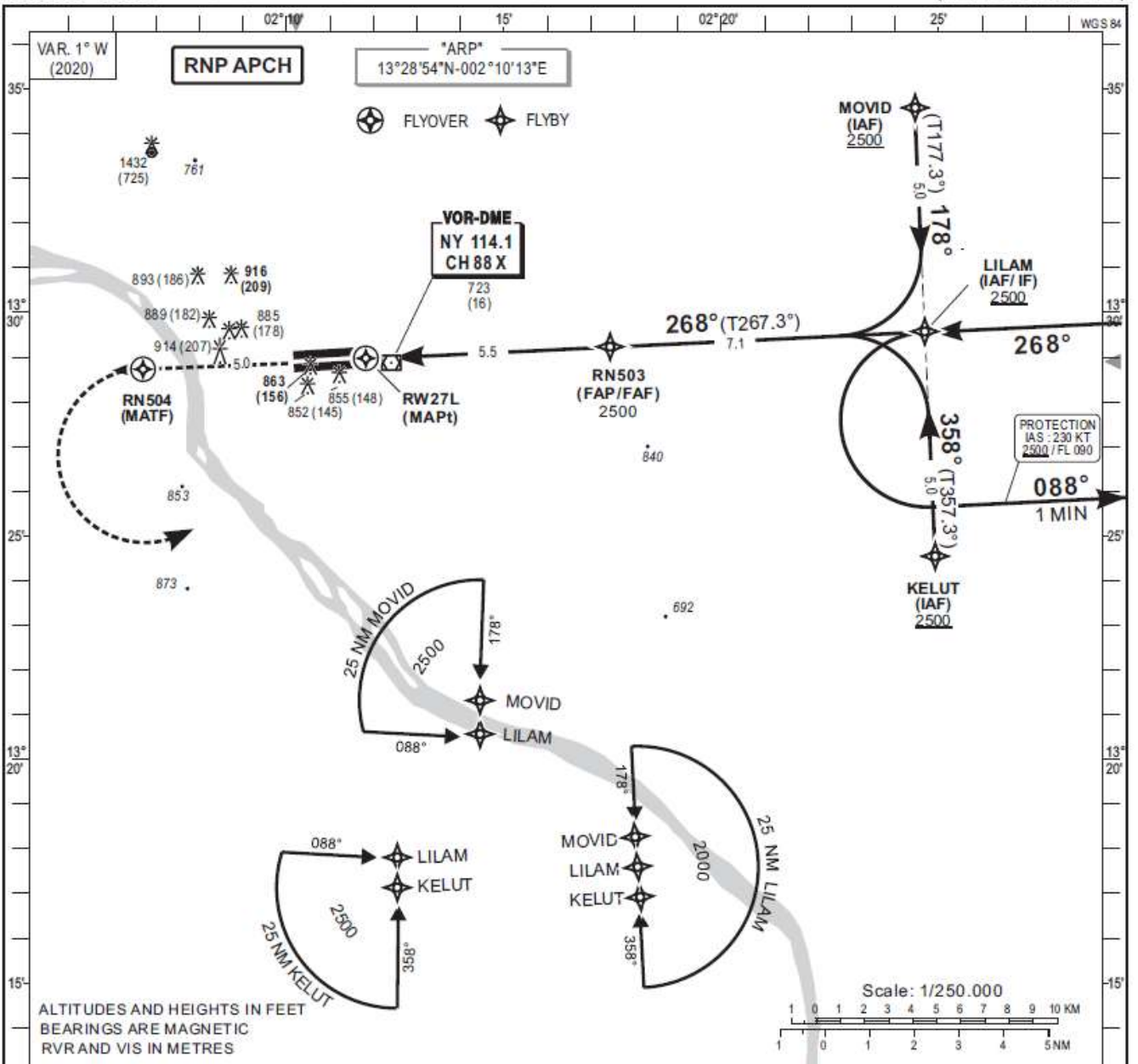
APP 131.3
TWR 119.7

NIAMEY / Diiori Hamani (DRRN)

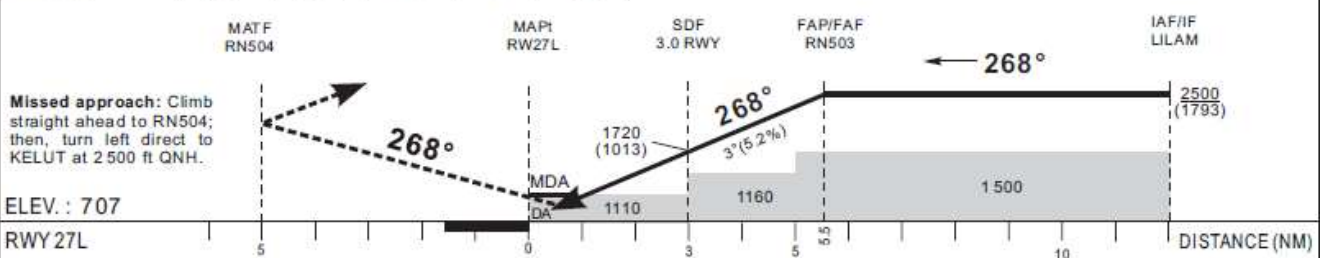
RNP - RWY 27L

(ACFT CAT A, B, C, D)

HEIGHTS RELATED TO THR RWY 27L - ELEV 707 FT



Distance to THR (NM)	2	3	4	5	FAP/FAF	TRANSITION ALTITUDE: 3300
Altitude (ft)	1400	1720	2030	2350	2500	



CAT	LNAV/VNAV			LNAV				CIRCLING (1)				RVR for take off CAT A - B - C - D : 400	
	OCA (OCH)	DA	DH	RVR	OCA (OCH)	MDA	MDH	RVR	OCA (OCH)	MDA	MDH		VIS
A	924 (217)			1500				1500	1211 (479)	1220 (480)		1500	Timing FAF / THR 5.5 NM KT MIN SEC KT MIN SEC 90 3 Min 40 140 2 Min 21 100 3 Min 18 150 2 Min 12 110 3 Min 00 160 2 Min 04 120 2 Min 45 170 1 Min 56 130 2 Min 32 180 1 Min 50
B	934 (227)	960 (250)		1500	1109 (402)	1110 (410)		1500	1224 (492)	1230 (500)		1600	
C	955 (248)			1800				1800	1323 (591)	1330 (600)		2400	
D	982 (275)	990 (280)	2000					2000	1421 (689)	1430 (690)		3600	

Notes:
 - Minimum temperature: 10°
 - (1) OCH and MDH AAL - Daytime only
 - RDH : 15 m

CORRECTIONS : New version.

TABULAR DESCRIPTION

RNP RWY 27L

Serial Number	Path Descriptor	Waypoint Identifier	Fly- Over	Course °M(°T)	Magnetic Variation	Distance (NM)	Turn Direction	Altitude (ft)	Speed limit (Kt)	VPA / TCH	Navigation Specification
10	IF	MOVID	-					+2500	230	-	RNP APCH
20	TF	LILAM	-	178(177.3)		5.0		+2500	230	-	RNP APCH
10	IF	KELUT	-					+2500	230	-	RNP APCH
20	TF	LILAM	-	358(357.3)		5.0		+2500	230	-	RNP APCH
10	IF	LILAM	-					+2500	230	-	RNP APCH
20	TF	RN503	-	268(267.3)		7.1		@2500		-	RNP APCH
30	TF	RW27L	Y	268(267.3)	+1.0	5.5		@757	-	-3/15	RNP APCH
40	TF	RN504	Y	268(267.3)		5.0	L		-	-	RNP APCH
50	DF	KELUT	-					+2500			
10	IF	LILAM	-					+2500	230	-	RNP APCH
20	HM	LILAM	Y	268(267.3)			L	+2500	230	-	RNP APCH

RNP RWY 27L		
Waypoint Identifier	Coordinates	
MOVID	13°34'34.700"N	002°24'26.900"E
LILAM	13°29'33.700"N	002°24'41.100"E
KELUT	13°24'32.700"N	002°24'55.400"E
RN503	13°29'13.900"N	002°17'26.700"E
RW27L	13°28'58.400"N	002°11'49.600"E
RN504	13°28'44.200"N	002°06'42.100"E