

Phone : +(221) 33.857.49.37
 +(221) 77.519.79.01
 Fax : +(221) 33.820.06.00
 AFTN : GOOONYX
 E-mail : bnidakar@asecna.org
 Web : https:ais.asecna.aero



AIRAC AIP SUP
N° 22/A/21GO
FEBRUARY 25, 2021

BUREAU NOTAM INTERNATIONAL DE L'OUEST AFRICAIN

B.P. 8155 Aéroport International Blaise DIAGNE Dakar/Diass – SENEGAL

BENIN – BURKINA FASO – COTE D'IVOIRE – GUINEE BISSAU – MALI – MAURITANIE – NIGER–SENEGAL–TOGO

**MISE A JOUR DES PROCEDURES D'APPROCHE AUX INSTRUMENTS RNAV ET ILS ALIGNEES SUR
 LES NOUVEAUX VOR ET ILS DE L'AERODROME DE NIAMEY**

**UPDATE OF RNAV AND ILS INSTRUMENT APPROACH PROCEDURES ALIGNED ON THE VOR AND ILS NEW
 POSITIONS AT NIAMEY AERODROME.**

NIGER

DATE D'ENTREE EN VIGUEUR / EFFECTIVE DATE	25 MARS à 0000 TU / 25 th MARCH at 0000UTC
VALIDITE / VALIDITY	09 SEPTEMBRE à 0000 TU / 09 th SEPTEMBRE at 0000UTC

Suite au déplacement des aides à la navigation VOR et LOC de Niamey, les procédures d'approche RNAV et ILS de Niamey sont mises à jour pour tenir compte de leur positionnement dans les opérations d'atterrissage et de décollage sur la piste 09R / 27L de 3000m.	<i>Further to the relocation of the VOR and LOC navigation aids from Niamey, the RNAV and ILS approach procedures from Niamey are updated to take into account their positioning in the landing and take-off operations on runway 09R / 27L of 3000m.</i>
Les 800m d'extension de piste comptés à partir du THR 27L sont encore inutilisables pendant cette période	<i>The 800m of runway extension counted from THR 27L is still unusable during this period</i>

CE SUP AIP COMPREND 01 PAGES ET 05 APPENDICES

THIS AIP SUP INCLUDES 01 PAGE AND 05 APPENDICES

- 12AD2-DRRN-IAC-ILS09R
- 12AD2-DRRN-IAC-RNP09R
- 12AD2-DRRN-IAC-RNP09R-DATA
- 12AD2-DRRN-IAC-RNP2L
- 12AD2-DRRN-IAC-RNP2L-DATA

FIN / END

**INSTRUMENT
APPROACH
CHART-ICAO**

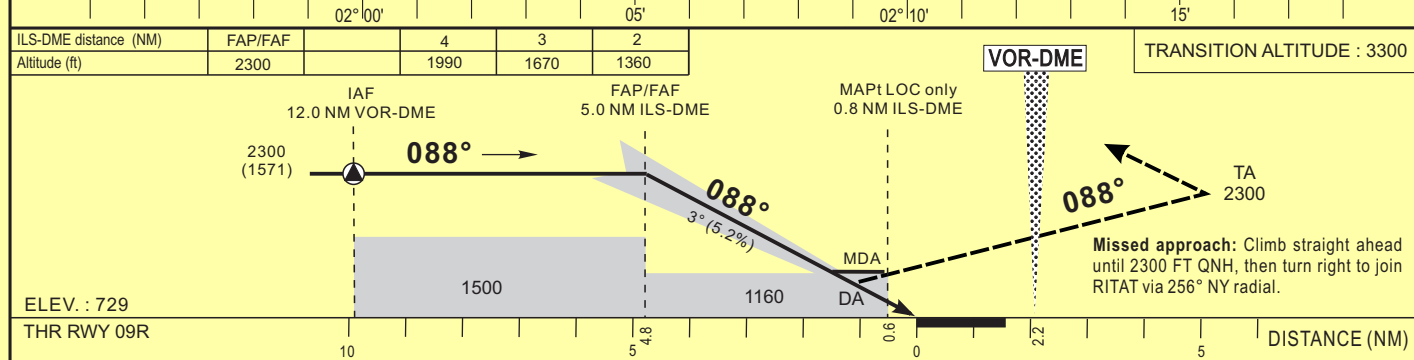
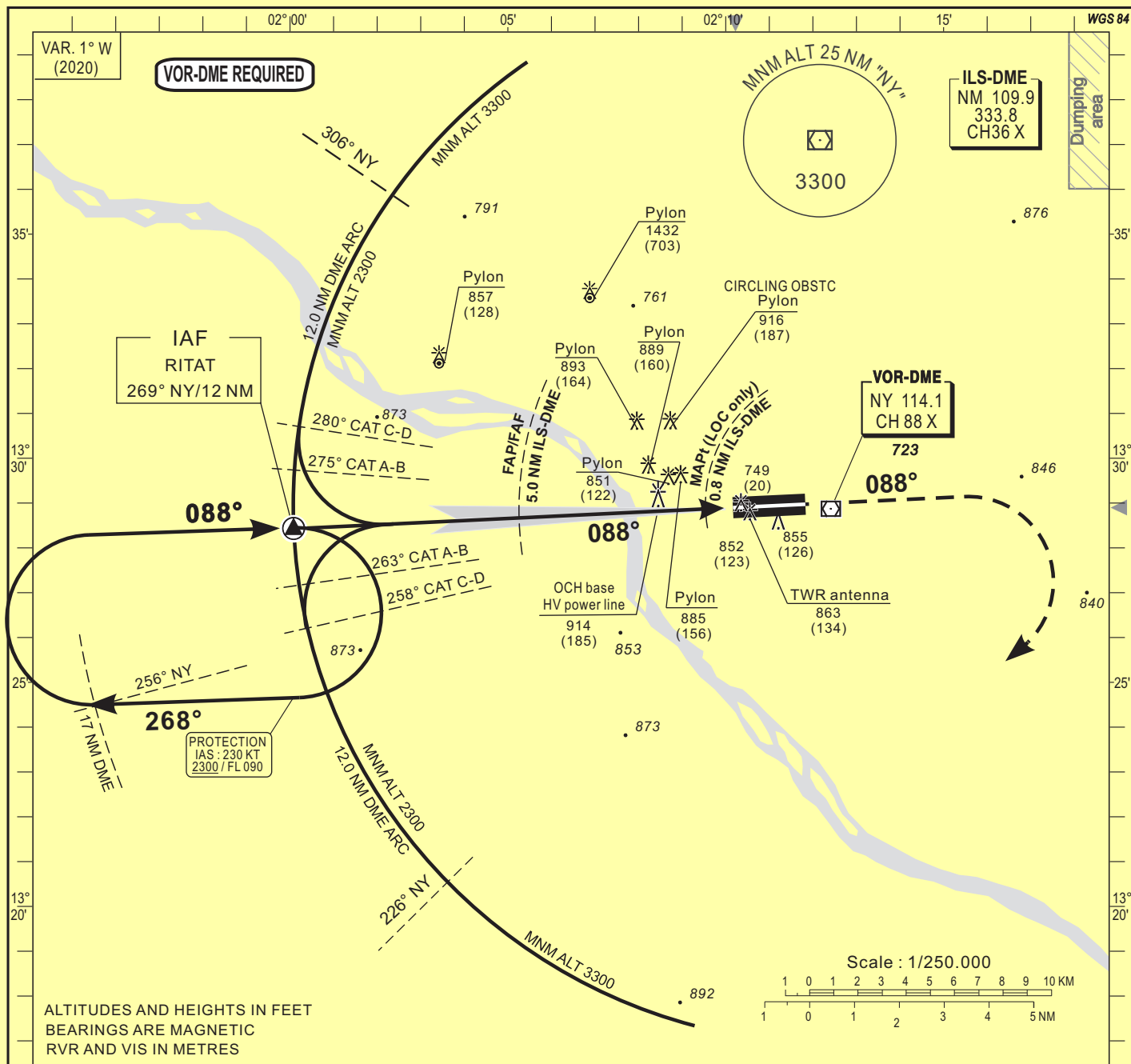
AERODROME ELEV 732 FT

HEIGHTS RELATED TO THR RWY09R - ELEV 729 FT

APP 131.3
TWR 119.7

NIAMEY / Diori Hamani (DRRN)

ILS or LOC - RWY 09R
(ACFT CAT A, B, C, D)



CORRECTIONS : New version.	CAT.1				LOC				CIRCLING (3)				RVR for take - off : CATA - B - C - D : 400				
	OCA (OCH)	DA	DH	RVR(1)RVR(2)	OCA (OCH)	MDA	MDH	RVR(1)RVR(2)	OCA (OCH)	MDA	MDH	VIS	Timing FAP-FAF / MAPt 4.0 NM				
A	888 (159)			900 1500				900 1500	1211 (479)	1220 (480)	1500	KT MIN SEC					
B	900 (171)	930 (200)		1000 1500	1160 (431)	1160 (440)		1000 1500	1224 (492)	1230 (500)	1600	90	2	Min 40	140	1	Min 43
C	909 (180)			1000 1800				1000 1800	1323 (591)	1330 (600)	2400	100	2	Min 24	150	1	Min 36
D	919 (190)			1400 2000				1400 2000	1421 (689)	1430 (690)	3600	110	2	Min 11	160	1	Min 30
												120	2	Min 00	170	1	Min 25
												130	1	Min 51	180	1	Min 20

Notes: (1) With approach line - Without approach line - (3) Daytime only

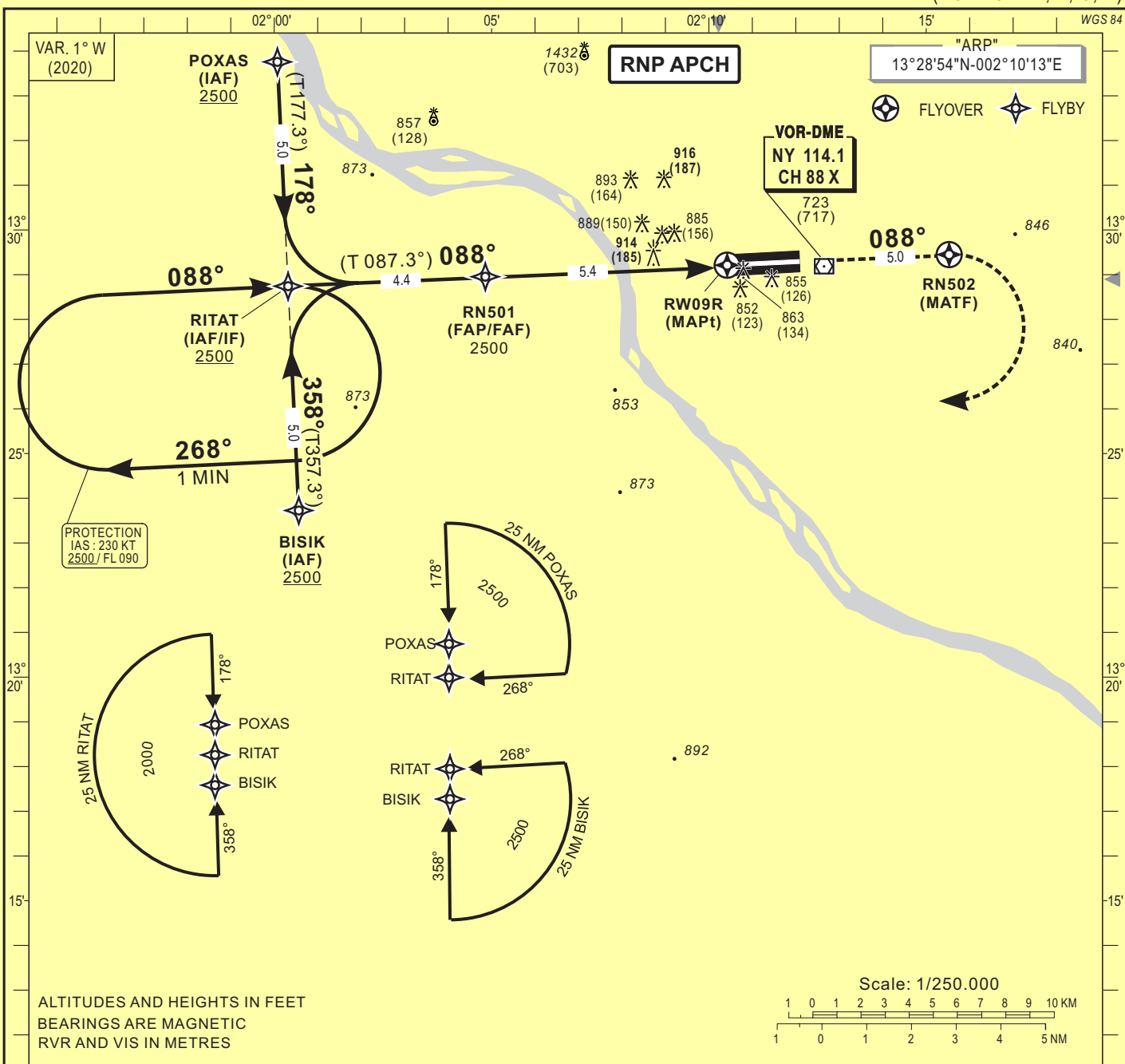
INSTRUMENT APPROACH CHART-ICAO

AERODROME ELEV 732 FT

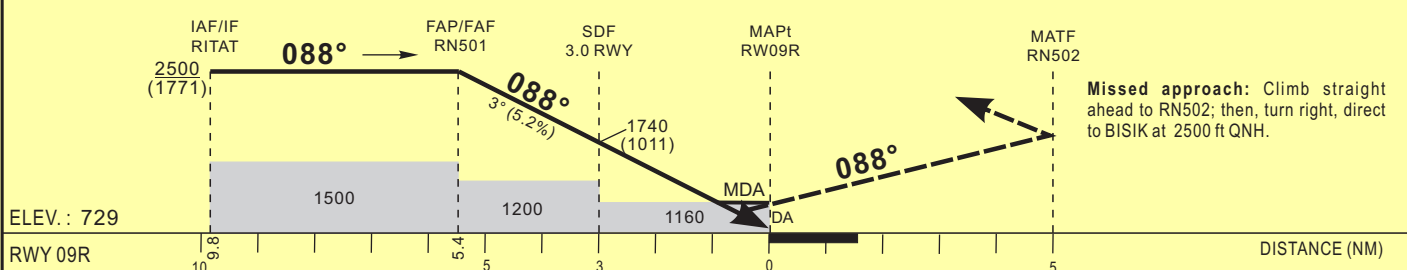
HEIGHTS RELATED TO THR RWY09R - ELEV 729 FT

APP 131.3
TWR 119.7

NIAMEY / Diiori Hamani (DRRN)
RNP - RWY 09R
(ACFT CAT A, B, C, D)



Distance to THR (NM)	FAP/FAF	5	4	3	2
Altitude (ft)	2500	2380	2060	1740	1420



CAT	LNAV/VNAV				LNAV				CIRCLING (3)				RVR for take off CATA - B - C - D : 400	
	OCA (OCH)	DA	DH	RVR(1)	RVR(2)	OCA (OCH)	MDA	MDH	RVR(1)	RVR(2)	OCA (OCH)	MDA		MDH
A	976 (248)	980 (250)		900	1500				900	1500	1211 (479)	1220 (480)		1500
B	985 (256)	990 (260)		1000	1500	1160 (431)	1160	(440)	1000	1500	1224 (492)	1230 (500)		1600
C	993 (264)	1000 (270)		1000	1800				1000	1800	1323 (591)	1330 (600)		2400
D	1020 (291)	1020 (300)		1400	2000				1400	2000	1421 (689)	1430 (690)		3600

Notes : - Minimum temperature: 10° - RDH : 15 m
 - (1) With approach lights - (2) Without approach lights
 - (3) OCH and MDH AAL - Daytime only

Timing : FAF/THR 5.4 NM					
KT	MIN	SEC	KT	MIN	SEC
90	3	Min 36	140	2	Min 19
110	2	Min 57	160	2	Min 01
120	2	Min 42	170	1	Min 54
130	2	Min 30	180	1	Min 48

TABULAR DESCRIPTION

RNP RWY 09R

Serial Number	Path Descriptor	Waypoint Identifier	Fly- Over	Course °M(°T)	Magnetic Variation	Distance (NM)	Turn Direction	Altitude (ft)	Speed limit (Kt)	VPA / TCH	Navigation Specification
10	IF	POXAS	-					+2500	230	-	RNP APCH
20	TF	RITAT	-	178(177.3)		5.0		+2500	230	-	RNP APCH
10	IF	BISIK	-					+2500	230	-	RNP APCH
20	TF	RITAT	-	358(357.3)		5.0		+2500	230	-	RNP APCH
10	IF	RITAT	-					+2500	230	-	RNP APCH
20	TF	RN501	-	088(087.3)		4.4		@2500	-	-	RNP APCH
30	TF	RW09R	Y	088(087.3)	+1.0	5.4		@779	-	-3/15	RNP APCH
40	TF	RN502	Y	088(087.3)		5.0	R	-	-	-	RNP APCH
50	DF	BISIK	-					+2500	-		
10	IF	RITAT	-					+2500	230	-	RNP APCH
20	HM	RITAT	Y	088(087.3)			R	+2500	230	-	RNP APCH

RNP RWY 09R		
Waypoint Identifier	Coordinates	
POXAS	13°33'26.500"N	001°59'50.100"E
RITAT	13°28'25.600"N	002°00'04.900"E
BISIK	13°23'24.600"N	002°00'19.600"E
RN501	13°28'38.300"N	002°04'37.100"E
RW09R	13°28'53.800"N	002°10'09.900"E
RN502	13°29'08.000"N	002°15'17.400"E

INSTRUMENT APPROACH CHART-ICAO

AERODROME ELEV 732 FT

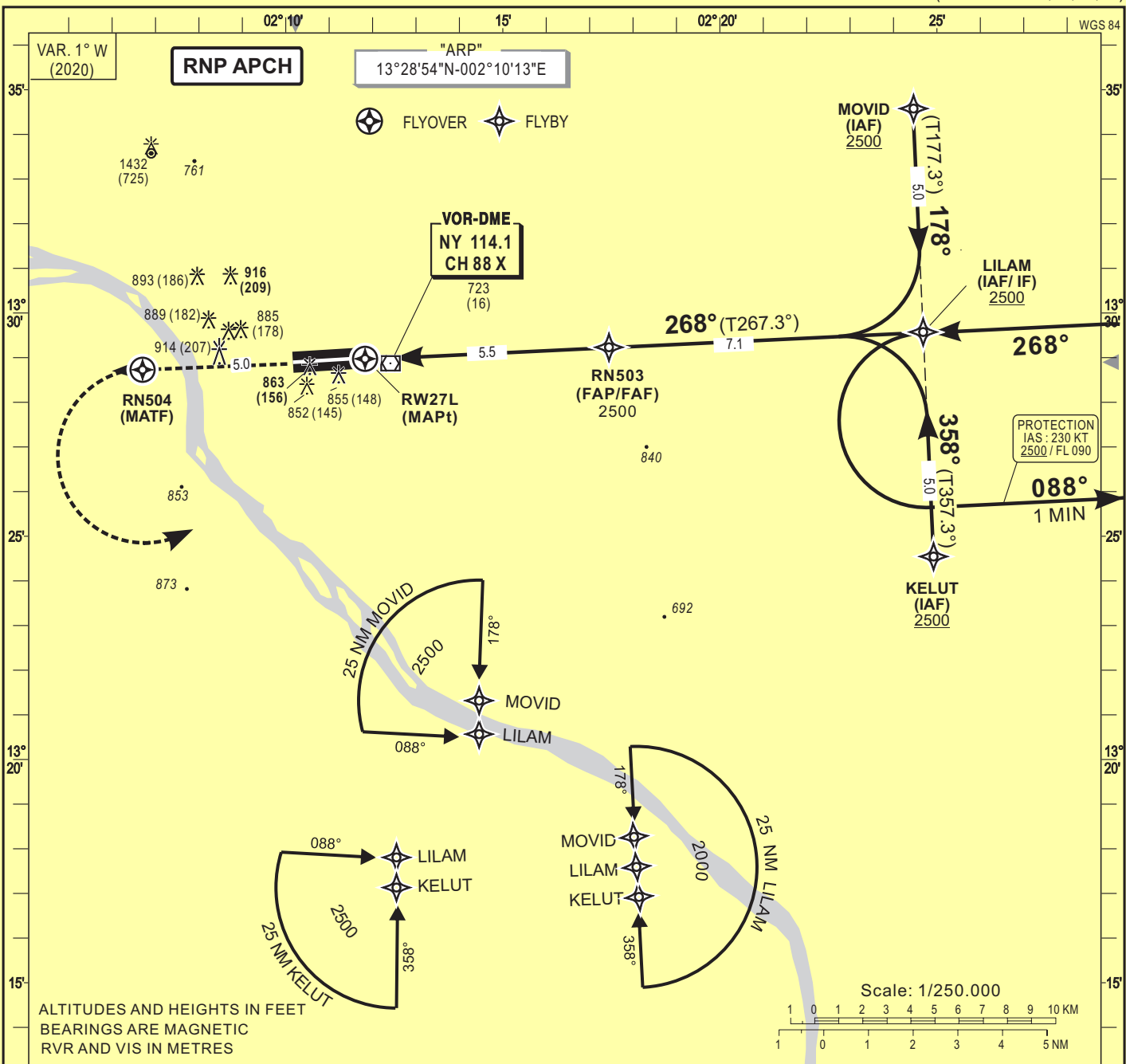
APP 131.3
TWR 119.7

NIAMEY / Diiori Hamani (DRRN)

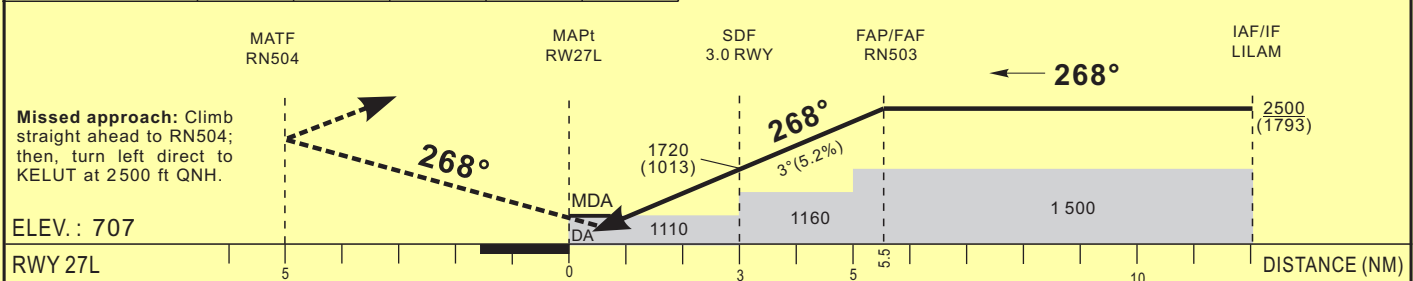
RNP - RWY 27L

HEIGHTS RELATED TO THR RWY27L - ELEV 707 FT

(ACFT CAT A, B, C, D)



Distance to THR (NM)	2	3	4	5	FAP/FAF	TRANSITION ALTITUDE: 3300
Altitude (ft)	1400	1720	2030	2350	2500	



CAT	LNAV/VNAV				LNAV				CIRCLING (1)				RVR for take off CAT A - B - C - D : 400			
	OCA (OCH)	DA	DH	RVR	OCA (OCH)	MDA	MDH	RVR	OCA (OCH)	MDA	MDH	VIS	Timing		FAF / THR 5.5 NM	
A	924 (217)			1500				1500	1211 (479)	1220 (480)		1500	90	3 Min 40	140	2 Min 21
B	934 (227)	960 (250)		1500	1109 (402)	1110 (410)		1500	1224 (492)	1230 (500)		1600	100	3 Min 18	150	2 Min 12
C	955 (248)			1800				1800	1323 (591)	1330 (600)		2400	110	3 Min 00	160	2 Min 04
D	982 (275)	990 (280)		2000				2000	1421 (689)	1430 (690)		3600	120	2 Min 45	170	1 Min 56
													130	2 Min 32	180	1 Min 50

Notes :

- Minimum temperature: 10°
- (1) OCH and MDH AAL - Daytime only
- RDH : 15 m

CORRECTIONS : New version.

TABULAR DESCRIPTION

RNP RWY 27L

Serial Number	Path Descriptor	Waypoint Identifier	Fly- Over	Course °M(°T)	Magnetic Variation	Distance (NM)	Turn Direction	Altitude (ft)	Speed limit (Kt)	VPA / TCH	Navigation Specification
10	IF	MOVID	-					+2500	230	-	RNP APCH
20	TF	LILAM	-	178(177.3)		5.0		+2500	230	-	RNP APCH
10	IF	KELUT	-					+2500	230	-	RNP APCH
20	TF	LILAM	-	358(357.3)		5.0		+2500	230	-	RNP APCH
10	IF	LILAM	-					+2500	230	-	RNP APCH
20	TF	RN503	-	268(267.3)		7.1		@2500		-	RNP APCH
30	TF	RW27L	Y	268(267.3)	+1.0	5.5		@757		-3/15	RNP APCH
40	TF	RN504	Y	268(267.3)		5.0	L				RNP APCH
50	DF	KELUT	-					+2500			
10	IF	LILAM	-					+2500	230	-	RNP APCH
20	HM	LILAM	Y	268(267.3)			L	+2500	230	-	RNP APCH

RNP RWY 27L		
Waypoint Identifier	Coordinates	
MOVID	13°34'34.700"N	002°24'26.900"E
LILAM	13°29'33.700"N	002°24'41.100"E
KELUT	13°24'32.700"N	002°24'55.400"E
RN503	13°29'13.900"N	002°17'26.700"E
RW27L	13°28'58.400"N	002°11'49.600"E
RN504	13°28'44.200"N	002°06'42.100"E