

Phone : +(221) 33.957.49.37  
: +(221) 77.519.79.01  
Fax : +(221) 33.820.06.00  
AFTN : GOOYNYX  
E-mail : bnidakar@asecna.org  
Web : <https://aim.asecna.aero>



**AIP SUP NR 10/A/20GO**  
**FEBRUARY 25, 2020**

**BUREAU NOTAM INTERNATIONAL DE L'OUEST AFRICAIN**  
B.P. 8155 Aéroport International Blaise DIAGNE Dakar/Diass-SENEGAL

**BENIN – BURKINA FASO – COTE D'IVOIRE – GUINEE BISSAU – MALI – MAURITANIE – NIGER–SENEGAL–TOGO**

**MISE A JOUR DES PROCEDURES D'APPROCHE AUX INSTRUMENTS RNAV  
DE L'AEROPORT MILITAIRE Léopolod Sédar SENGHOR (AMLSS) DE DAKAR**  
*Update of Dakar (AMLSS) RNAV Instrument approach procedures*

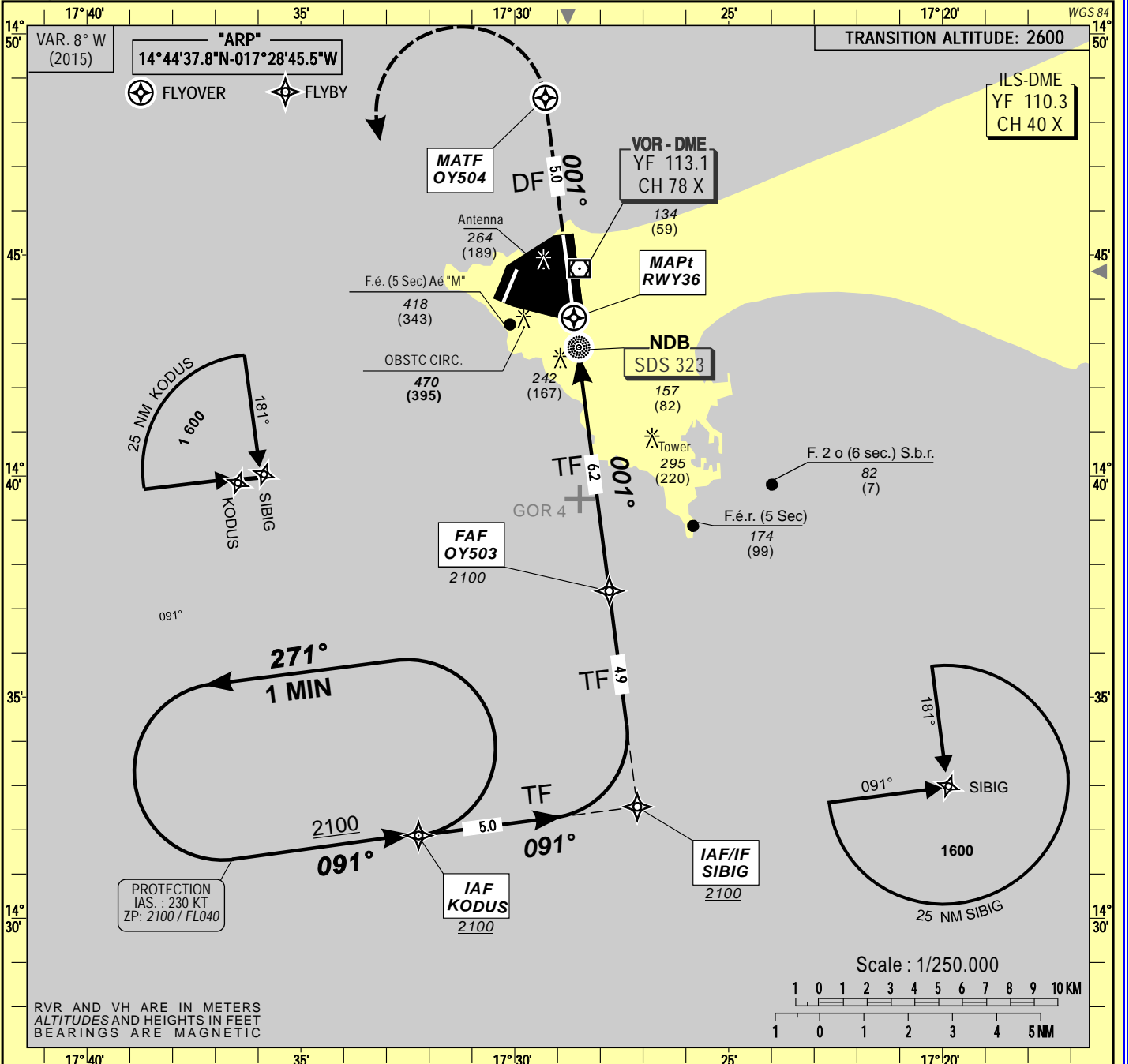
**SENEGAL**

Ce supplément remplace le SUP 80/A/19GO du 20 décembre 2019

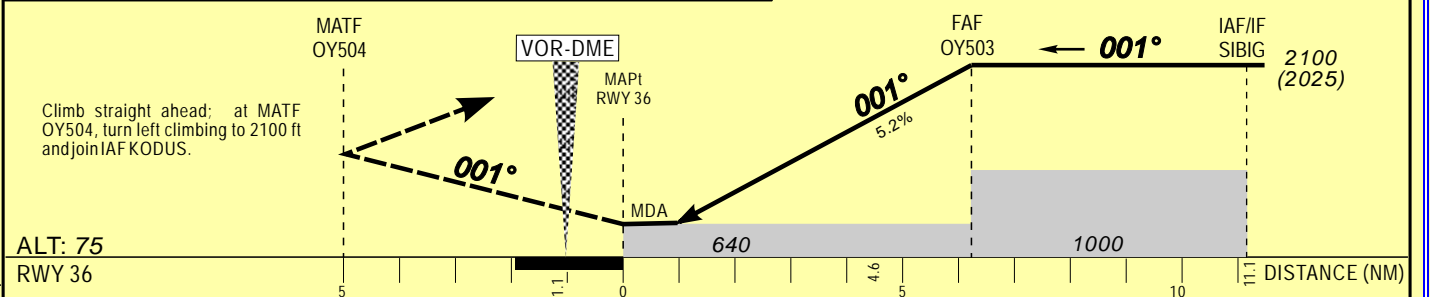
*This AIP SUP replaces AIP SUP 80/A/19GO of 20<sup>th</sup> december 2019*

<b>Mise en vigueur / Effective date :</b>	<b>25 FEVRIER / 25 FEBRUARY 2020</b>
<b>Validité / Validity :</b>	<b>PERM</b>

**CE SUP AIP COMPREND 01 PAGES ET 04 APPENDICES**  
**THIS AIP SUP INCLUDES 01 PAGE AND 04 APPENDICES**



Distance to THR 18 (NM)	FAP/FAF	6	5	4	3	2
Altitude (ft)	2 100	2040	1720	1400	1080	760



CAT	LNAV				CIRCLING (3)				VIS
	OCA (OCH)	MDA	MDH	RVR(1)	RVR(2)	OCA (OCH)	MDA	MDH	
A	634 (559)	640 (560)		1000	1500	765 (680)	770 (680)		1500
B	634 (559)	640 (560)		1200	1500	765 (680)	770 (680)		1600
C	634 (559)	640 (560)		1200	2000	864 (779)	870 (780)		2400
D	634 (559)	640 (560)		1600	2000	864 (779)	870 (780)		3600

PROCEDURE TO BE USED ACCORDING TO AIC NR 10 / A /06GO - 20 JULY 2006.

RVR for take-off		CAT A - B - C : 400	
		CAT D : 400	
Timing		FAF / THR 6.2 NM	
KT	MIN SEC	KT	MIN SEC
90	4 Min 08	140	2 Min 39
100	3 Min 43	150	2 Min 29
110	3 Min 23	160	2 Min 20
120	3 Min 06	170	2 Min 11
130	2 Min 52	180	2 Min 04

Notes : (1) With approach lights - (2) Without approach lights - (3) Daytime only

CORRECTIONS : TAA, Tabular description identification

TABULAR DESCRIPTION

RNAV(GNSS) RWY36

Serial Number	Path Descriptor	Waypoint Identifier	Fly Over	Course °M(°T)	Magnetic Variation	Distance (NM)	Turn Direction	Altitude (ft)	Speed limit (Kt)	VPA/TCH	Navigation Specification
10	IF	KODUS	—	—	—	—	—	+ 2100	230	—	RNP APCH
20	TF	SIBIG	—	091(082.5)	—	5.00	—	+ 2100	230	—	RNP APCH
10	IF	SIBIG	—	—	—	—	—	+ 2100		—	RNP APCH
20	TF	OY503	—	001(352.6)	—	4.9	—	@2100		—	RNP APCH
30	TF	RWY36	Y	001(352.6)	—	6.2	—	@640	—	-3/15	RNP APCH
40	DF	RWY36	—	001(352.6)	8.0	—	—	—	—	—	RNP APCH
50	DF	OY504	Y	—	—	—	—	—	—	—	RNP APCH
60	DF	KODUS	—	—	—	—	—	+2100	230	—	RNP APCH

WAYPOINT LIST

RNAV(GNSS) RWY 36

Waypoint Identifier	Coordinates	
KODUS	14°31'52.300"N	017°32'14.900"W
SIBIG	14°32'31.200"N	017°27'08.200"W
OY503	14°37'24.000"N	017°27'47.400"W
RWY36	14°43'34.500"N	017°28'37.000"W
OY504	14°48'33.200"N	017°29'17.100"W

CHANGE : TAA , Tabula description identification

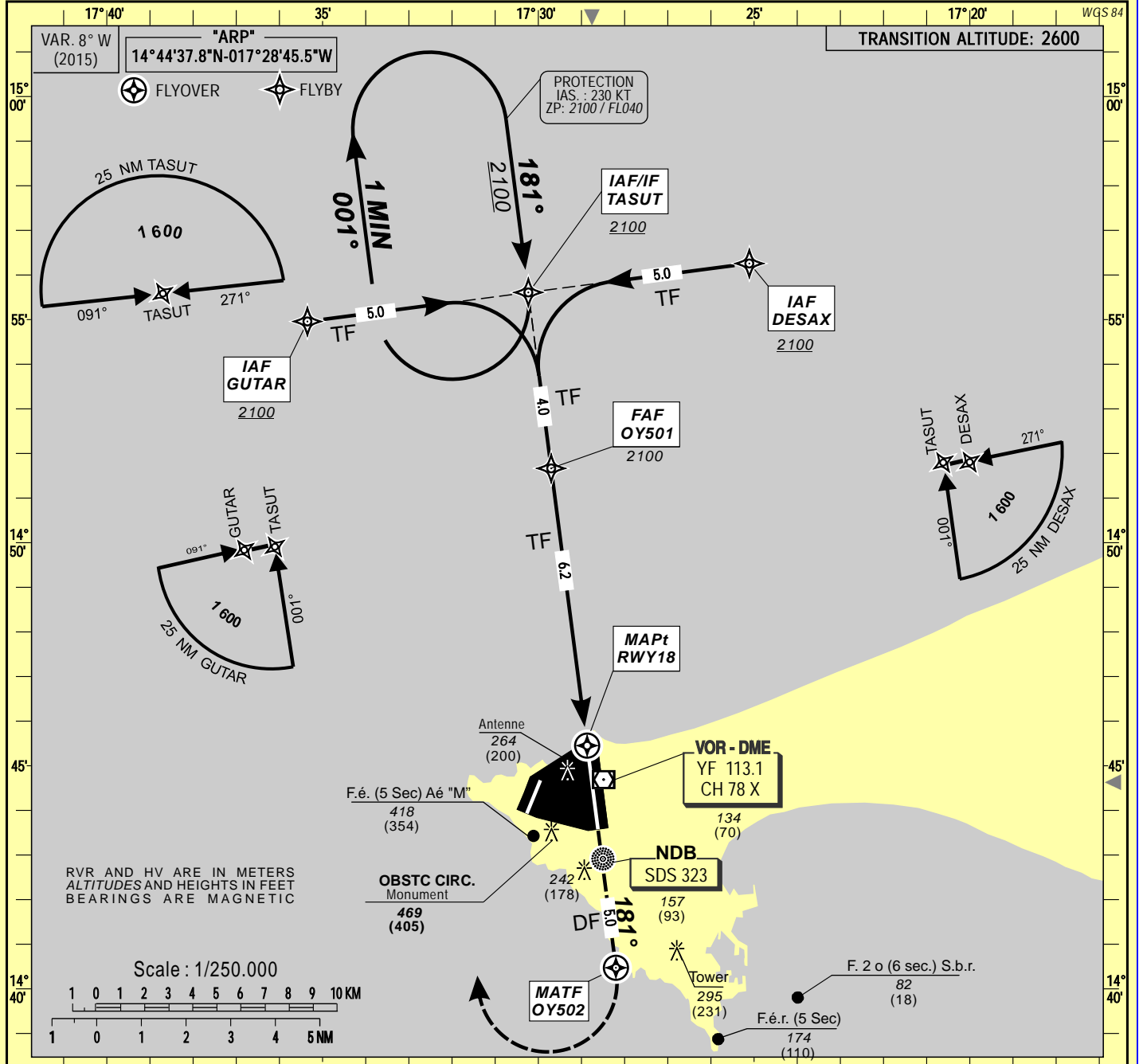
**INSTRUMENTS  
APPROACH CHART**  
Categories A-B-C-D

ELEV. : 85  
THR : 64

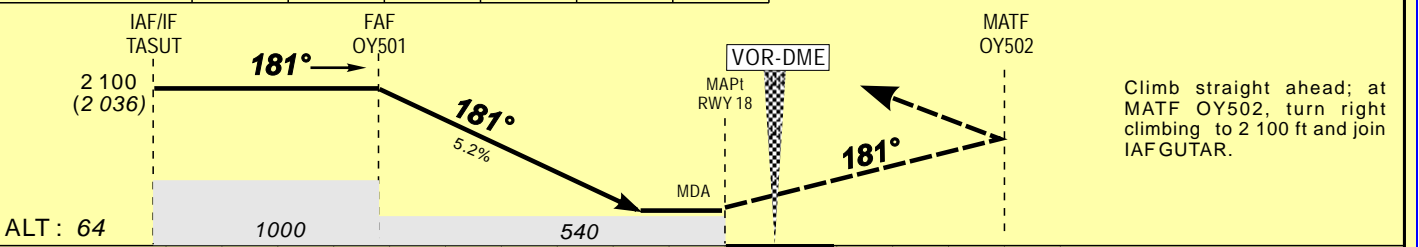
APP: DIASS APP: 120.5  
AFIS : DAKAR-YOFF: 118.1

DAKAR-YOFF / Militaire (GOOY)  
RNAV(GNSS)- RWY 18

HEIGHTS RELATED TO THR RWY18 ELEVATION



Distance to THR 18 (NM)	FAF	6	5	4	3	2
Altitude (ft)	2 100	2030	1710	1390	1070	750



THR RWY 18	10	5	0	5	
	10	5	0	5	DISTANCE (NM)

CAT	LNAV			CIRCLING (3)		
	OCA (OCH)	MDA MDH	RVR	OCA (OCH)	MDA MDH	VIS
A	532 (468)	540 (470)	1500	765 (680)	770 (680)	1500
B	532 (468)	540 (470)	1500	765 (680)	770 (680)	1600
C	532 (468)	540 (470)	2000	864 (779)	870 (780)	2400
D	532 (468)	540 (470)	2000	864 (779)	870 (780)	3600

PROCEDURE TO BE USED ACCORDING TO  
AIC NR 10 / A /06GO - 20 JULY 2006.

RVR for take-off		CAT A - B - C : 400	
		CAT D : 400	
Timing:		FAF / THR	
		6.2 NM	
KT	MIN SEC	KT	MIN SEC
90	4 Min 10	140	2 Min 40
100	3 Min 45	150	2 Min 30
110	3 Min 24	160	2 Min 20
120	3 Min 07	170	2 Min 12
130	2 Min 53	180	2 Min 05

Notes : (1) With approach lights - (2) Without approach lights - (3) Daytime only

CHANGE : NIL

TABULAR DESCRIPTION

RNAV(GNSS) RWY18

Serial Number	Path Descriptor	Waypoint Identifier	Fly Over	Course °M(°T)	Magnetic Variation	Distance (NM)	Turn Direction	Altitude (ft)	Speed limit (Kt)	VPA/ TCH	Navigation Specification
10	IF	GUTAR	—	—	—	—	—	+ 2100	230	—	RNP APCH
20	TF	TASUT	—	091(082.5)	—	5.00	—	+ 2100	230	—	RNP APCH
10	IF	DESAX	—	—	—	—	—	+ 2100	230	—	RNP APCH
20	TF	TASUT	—	271(262.6)	—	5.00	—	+ 2100	230	—	RNP APCH
10	IF	TASUT	—	—	—	—	—	+ 2100		—	RNP APCH
20	TF	OY501	—	181(172.6)	—	4.0	—	@2100		—	RNP APCH
30	TF	RWY18	Y	181(172.6)	—	6.2	—	@540	—	-3/15	RNP APCH
40	DF	RWY18	—	181(172.6)	8.0	—	—	—	—	—	RNP APCH
50	DF	OY502	Y	—	—	—	—	—	—	—	RNP APCH
60	DF	GUTAR	—	—	—	—	—	+2100	230	—	RNP APCH

WAYPOINT LIST

RNAV(GNSS) RWY18

Waypoint Identifier	Coordinates	
GUTAR	14°54'57.500"N	017°35'21.100"W
DESAX	14°56'15.500"N	017°25'06.600"W
TASUT	14°55'36.500"N	017°30'13.900"W
OY501	14°51'39.900"N	017°29'42.100"W
RWY18	14°45'27.100"N	017°28'52.100"W
OY502	14°40'28.300"N	017°28'12.100"W