

Phone : +(221) 33.957.49.37
Fax : +(221) 33.820.06.00

AFTN : GOOOYNYX

E-mail : bnidakar@asecna.org

Web : www.ais-asecna.org



AIRAC AIP SUP
NR 02/A/19GO
03 JANUARY 2019

BUREAU NOTAM INTERNATIONAL DE L'OUEST AFRICAIN

B.P. 8155 Aéroport International Léopold Sédar SENGHOR Dakar/Yoff-SENEGAL

BENIN – BURKINA FASO – COTE D'IVOIRE – GUINEE BISSAU – MALI – MAURITANIE – NIGER – SENEGAL – TOGO

CARTES D'APPROCHE RNAV(GNSS) DE MOPTI

RNAV (GNSS) APPROACH CHARTS OF MOPTI

/
MALI

Effective date	31 January 2019
Validity	PERMANENT

Mise à jour des cartes d'approche PBN de l'aéroport de MOPTI.

Updating PBN approach charts of MOPTI Airport.

MODIFIER/MODIFY ATLAS

**INSTRUMENT
APPROACH
CHART-ICAO**

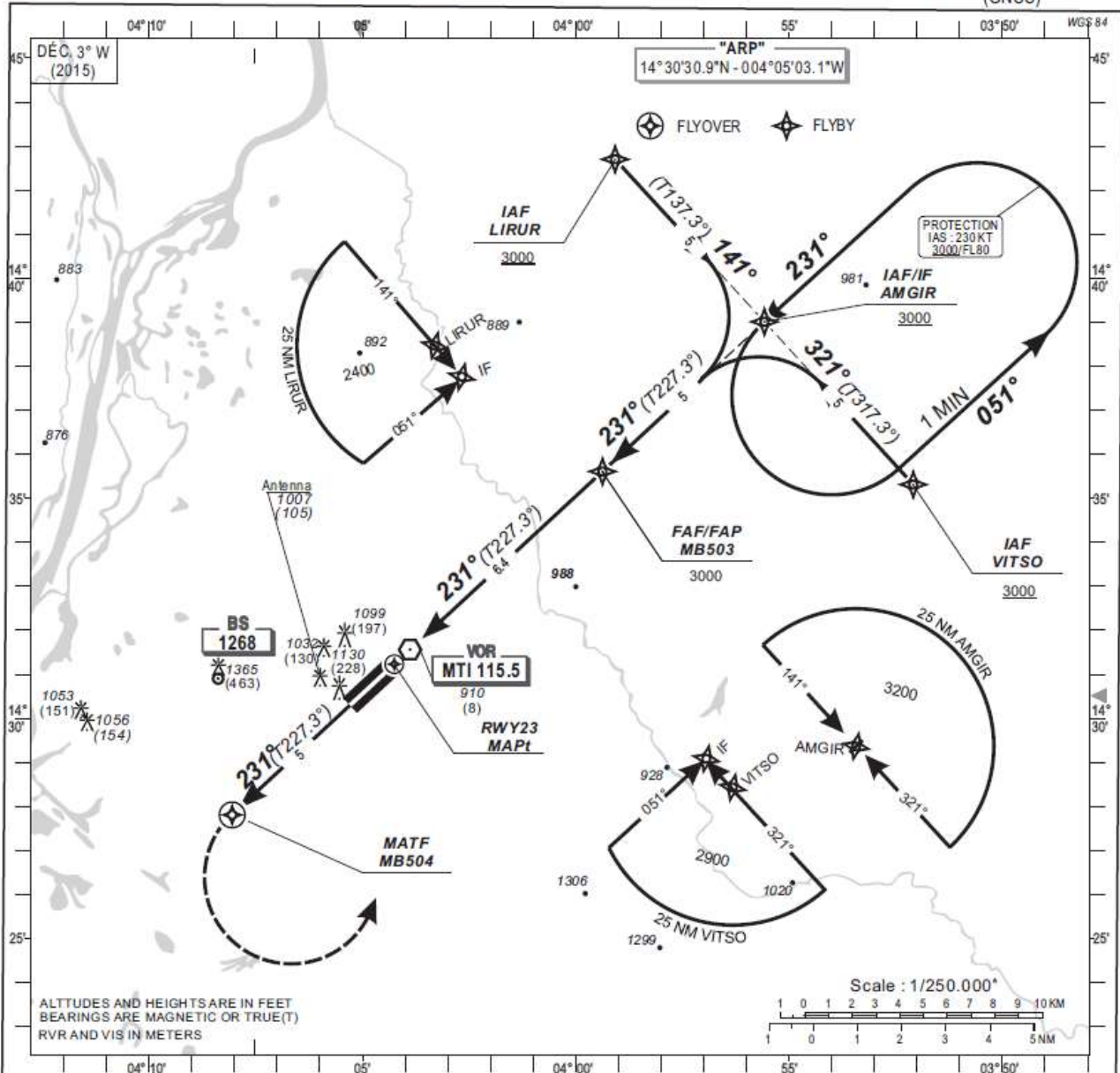
AERODROME ELEV 910 FT

HEIGHTS RELATED TO
THR RWY23 - ELEV 902 FT

APP 118.2
TWR 118.2

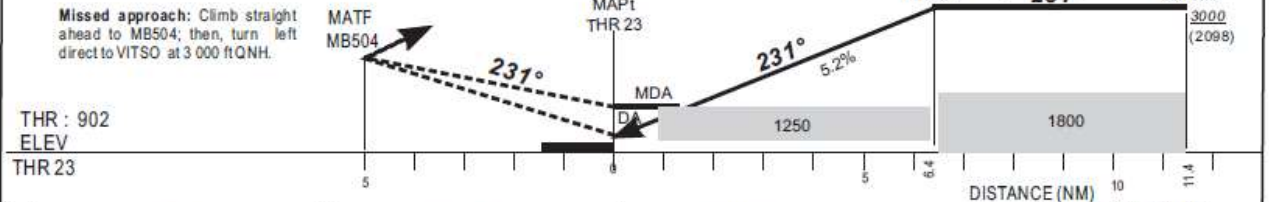
MOPTI / Ambodédjo (GAMB)

RNAV (GNSS) - RWY 23



Distance to THR(NM)	2	3	4	5	FAF/FAF
Altitude(ft)	1590	1910	2230	2550	3000

TRANSITION ALTITUDE 3500



CAT	LNAV				LNAV/VNAV				CIRCLING (*)				RVR for take-off CAT A - B - C : 400 CAT D : 400
	OCA (OCH)	MDA	MDH	RVR	OCA (OCH)	DA	DH	RVR	OCA (OCH)	MDA	MDH	VIS	
A	1243 (341)	1250 (350)	1500	1500	1152 (250)	1160 (250)	1500	1500	1456 (546)	1460 (550)	1500	1500	Timing FAF/THR : 6.4 NM KT MIN SEC KT MIN SEC 90 4 Min 16 140 2 Min 45 100 3 Min 50 150 2 Min 34 110 3 Min 29 160 2 Min 24 120 3 Min 12 170 2 Min 16 130 2 Min 57 180 2 Min 08
B	1243 (341)	1250 (350)	1500	1500	1164 (262)	1170 (270)	1500	1500	1601 (691)	1610 (700)	1600	1600	
C	1243 (341)	1250 (350)	1800	1800	1184 (282)	1190 (290)	1800	1800	1759 (849)	1760 (850)	2400	2400	
D	1243 (341)	1250 (350)	2000	2000	1211 (309)	1220 (310)	2000	2000	1759 (849)	1760 (850)	3600	3600	

Notes :
- (*) OCH and MDH AAL - Daytime only
- RDH: 15 m Minimum temperature: 10°C

CORRECTIONS : PBN update

TABULAR DESCRIPTION

RNAV (GNSS)- RWY23

Serial Number	Path Descriptor	Waypoint Identifier	Fly- Over	Course °M(°T)	Magnetic Variation	Distance (NM)	Turn Direction	Altitude (ft)	Speed limit (Kt)	VPA / TCH	Navigation Specification
10	IF	VISTO	-					+3000	230	-	RNP APCH
20	TF	AMGIR	-	321 (317.3)		5.00		+3000	230	-	RNP APCH
10	IF	LIRUR	-					+3000	230	-	RNP APCH
20	TF	AMGIR	-	141 (137.3)		5.00		+3000	230	-	RNP APCH
10	IF	AMGIR	-					+3000	230	-	RNP APCH
20	TF	MB503	-	231 (227.3)		5.00		@3000	230	-	RNP APCH
30	TF	RWY23	Y	231 (227.3)		6.40		@952	-	-3/50	RNP APCH
40	FA	RWY23		231 (227.3)	+3.00				-	-	RNP APCH
50	DF	MB504	Y			5.0	L		-	-	RNP APCH
60	DF	VISTO	-					+3000	230	-	RNP APCH

WAYPOINTS LIST

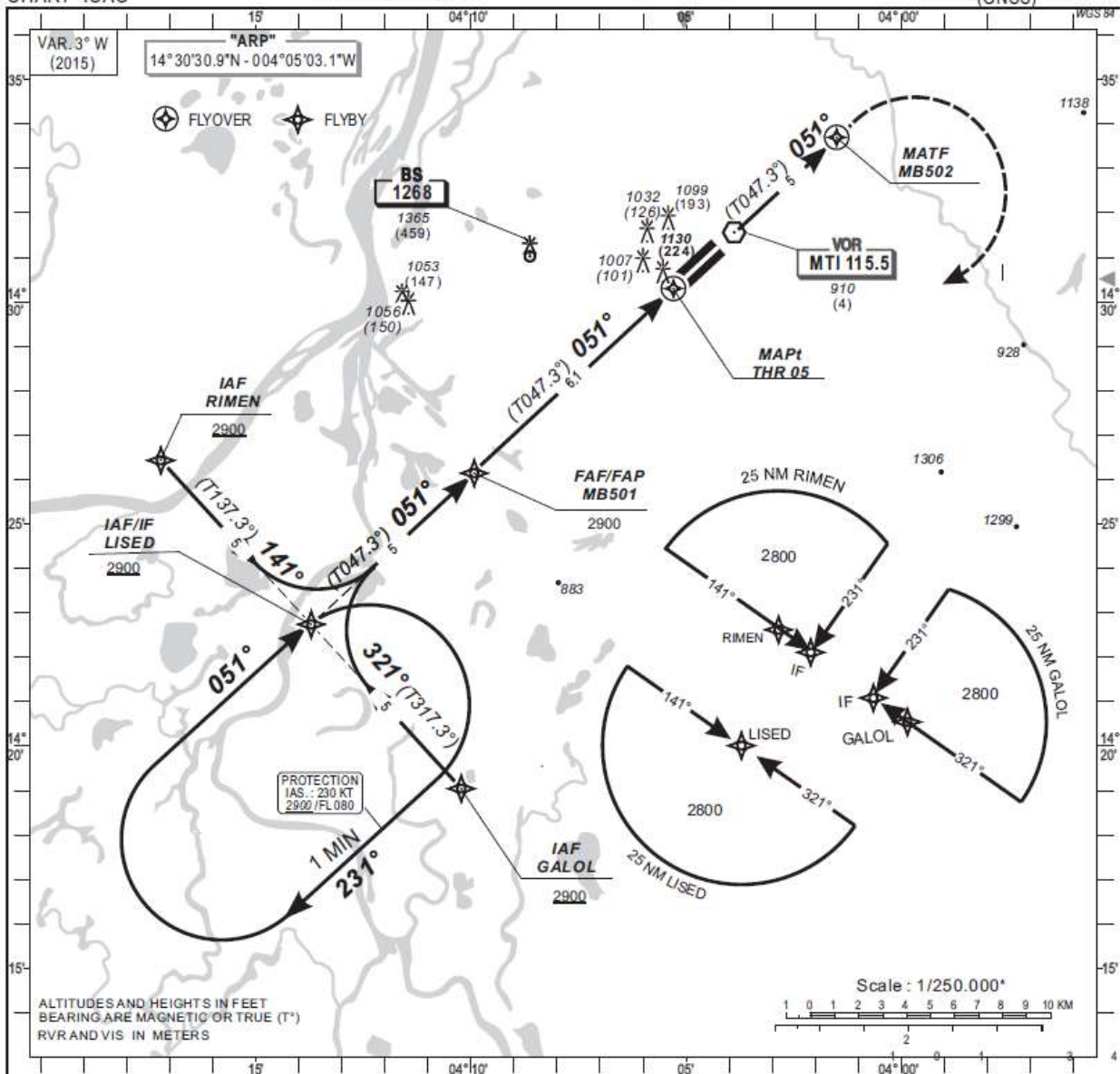
RNAV (GNSS)- RWY23		
Waypoint Identifier	Coordinates	
VITSO	14°35'18.7560'' N	003°52'05.2940'' W
LIRUR	14°42'41.9530'' N	003°59'04.6230'' W
AMGIR	14°39'00.4930'' N	003°55'34.6490'' W
MB503	14°35'36.5020'' N	003°59'22.3580'' W
RWY23	14°31'13.9040'' N	004°04'15.2140'' W
MB504	14°27'49.7700'' N	004°08'02.6580'' W

**INSTRUMENT
APPROACH
CHART - ICAO**

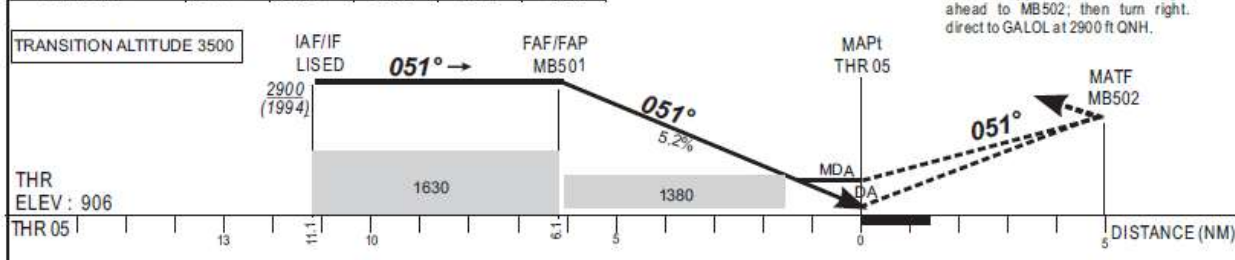
AERODROME ELEV 910 FT
HEIGHTS RELATED TO
THR RWY05 - ELEV 906 FT

APP 118.2
TWR 118.2

MOPTI / Ambodédjo (GAMB)
RNAV (GNSS) - RWY 05



Distance to THR(NM)	5	4	3	2
Altitude(ft)	2900	2550	2230	1910



CAT	RNAV				RNAV/VNAV				CIRCLING (*)				RVR for take-off CAT A - B - C : 400 CAT D : 400	
	OCA (OCH)	MDA	MDH	RVR(1)	RVR(2)	OCA (OCH)	DA	DH	RVR(1)	RVR(2)	OCA (OCH)	MDA		MDH
A	1376 (470)	1380 (470)	1400	1500	1244 (338)	1250 (340)	1400	1500	1456 (546)	1460 (550)	1500			
B	1376 (470)	1380 (470)	1500	1500	1257 (351)	1260 (360)	1500	1500	1601 (691)	1610 (700)	1600			
C	1376 (470)	1380 (470)	1600	2000	1276 (370)	1280 (370)	1600	2000	1759 (849)	1760 (850)	2400			
D	1376 (470)	1380 (470)	1800	2000	1290 (384)	1290 (390)	1800	2000	1759 (849)	1760 (850)	3600			

Notes: - (1) With approach lights - (2) Without approach lights
- (*) OCH and MDH AAL - Daytime only
- RDH: 15 m Minimum temperature: 10°C

KT	MIN SEC	KT	MIN SEC
90	4 Min 04	140	2 Min 37
100	3 Min 40	150	2 Min 26
110	3 Min 20	160	2 Min 17
120	3 Min 03	170	2 Min 09
130	2 Min 49	180	2 Min 02

31 JANUARY 2019

AERONAUTICAL INFORMATION SERVICE - ASECA

905 D-1F

TABULAR DESCRIPTION

RNAV _(GNSS) RWY 05											
Serial Number	Path Descriptor	Waypoint Identifier	Fly-Over	Course °M(°T)	Magnetic Variation	Distance (NM)	Turn Direction	Altitude (ft)	Speed limit (Kt)	VPA/TCH	Navigation Specification
10	IF	GALOL	—	—	—	—	—	+2900	230	—	RNP APCH
20	TF	LISED	—	321(317.3)	—	5	—	+2900	230	—	RNP APCH
10	IF	RIMEN	—	—	—	—	—	+2900	230	—	RNP APCH
20	TF	LISED	—	141(137.3)	—	5	—	+2900	230	—	RNP APCH
10	IF	LISED	—	—	—	—	—	+2900	230	—	RNP APCH
20	TF	MB501	—	051(047.3)	—	5	—	@2900	—	—	RNP APCH
30	TF	RWY05	Y	051(047.3)	—	6.1	—	@956	—	-3/50	RNP APCH
40	FA	RWY05	—	051(047.3)	+3	—	—	—	—	—	RNP APCH
50	DF	MB502	Y	—	—	—	—	—	—	—	RNP APCH
60	DF	GALOL	—	—	—	—	R	+2900	230	—	RNP APCH
			—	—	—	—				—	

WAYPOINTS LIST

RNAV _(GNSS) RWY 05		
Waypoint Identifier	Coordinates	
GALOL	14°19'02.5530"N	004°10'13.3980"W
RIMEN	14°26'25.7600"N	004°17'12.2160"W
LISED	14°22'44.3150"N	004°13'42.6470"W
MB501	14°26'08.5420"N	004°09'55.3760"W
RWY05	14°30'17.9120"N	04°05'17.60180"W
MB502	14°33'42.0010"N	004°01'30.0900"W