

Phone : +(242) 05 377 95 54

+(242) 05 377 95 64

AFTN : FCCCYNXX

E-mail :
bnibrazza@asecna.org

bnibrazza@yahoo.fr

Web :
<https://aim.asecna.aero>



BUREAU NOTAM INTERNATIONAL

DE L'AFRIQUE CENTRALE

B.P. 660 BRAZZAVILLE – CONGO

AIRAC AIP SUP

NR 28/A/22FC

MAR 24th, 2022

CAMEROUN – CENTRAFRIQUE – CONGO – GABON – GUINEE ÉQUATORIALE – SAO TOME – TCHAD

OUESSO (CONGO)

FCOU

**MISE A JOUR DES PROCEDURES D'APPROCHE GNSS
UPDATE OF GNSS APPROACH PROCEDURES**

Effective date	21 APR 2022
Validity	PERM

Dans le cadre de la prise en compte de la nouvelle déclinaisons magnétique, les volets de procédures de l'aérodrome de OUESSO sont mis à jour.

In the framework of taking into account the new magnetic variations, the procedures of OUESSO aerodrome are updated

ANNEXES/APPENDICES

05AD2-FCOU-IAC-RNAV01

05AD2-FCOU-IAC-RNAV19

CE SUP AIP COMPORTE 01 PAGE ET 02 ANNEXES/

THIS AIP SUP HAS 01 PAGE AND 02 APPENDICES

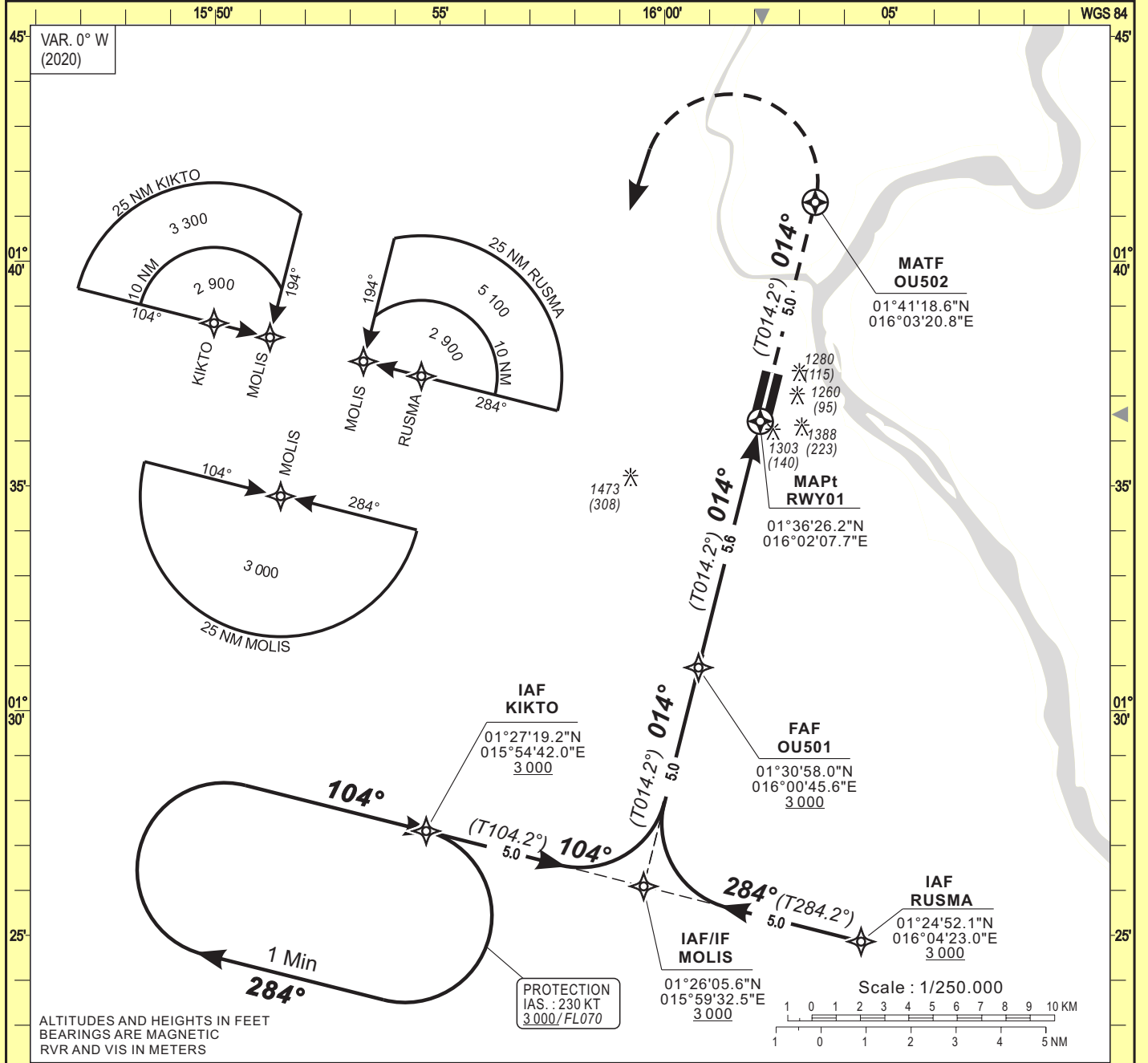
INSTRUMENT APPROACH CHART
Categories A-B-C-D

ELEV. : 1168
THR : 1165
HEIGHTS RELATED TO THR 01 ELEVATION

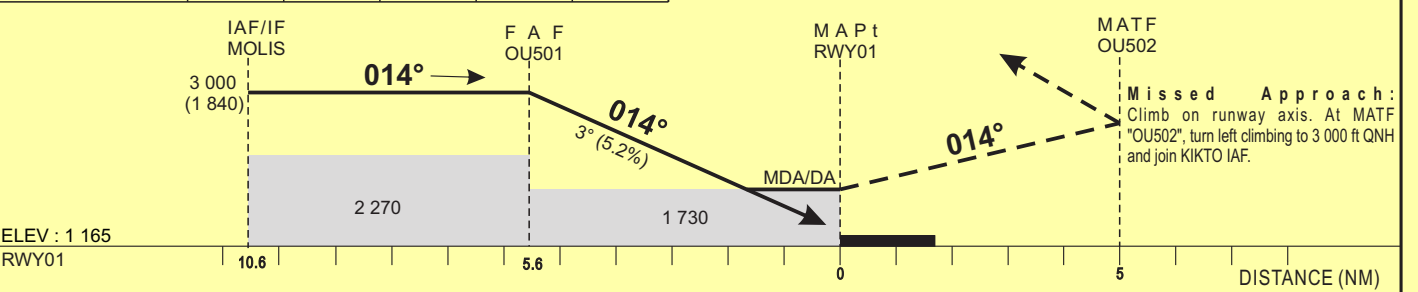
AFIS: 118.1

OUESSO (FCOU)

RNP - RWY 01



Distance to THR (NM)	FAP/FAF	4	3	2	TRANSITION ALTITUDE : 6 000
Altitude (ft)	3 000	2 490	2 170	1 860	



CAT	LNAV				LNAV/VNAV				Circling (*)				RVR for take-off CATA - B - C - D : 400
	OCA (OCH)	MDA	MDH	RVR	OCA (OCH)	DA	DH	RVR	OCA (OCH)	MDA	MDH	VH	
A	1726 (558)	1730 (560)	1500	1437 (272)	1440 (280)	1500	1644 (476)	1650 (480)	1500				
B	1726 (558)	1730 (560)	1500	1447 (282)	1450 (290)	1500	1699 (531)	1700 (540)	1600				
C	1726 (558)	1730 (560)	2000	1457 (292)	1460 (300)	1800	1926 (758)	1930 (760)	2400				
D	1726 (558)	1730 (560)	2000	1467 (302)	1470 (310)	2000	2054 (886)	2060 (890)	3600				

Notes : - (*) Daytime only - OCH and MDH AAL - Minimum temperature: 15° C - RDH 15 m.
- LNAV/VNAV not authorized with a remote QNH.

PROCEDURE TO BE USED ACCORDING TO AIC NR 02/A/2002 DAKAR - 21 MARCH 2002

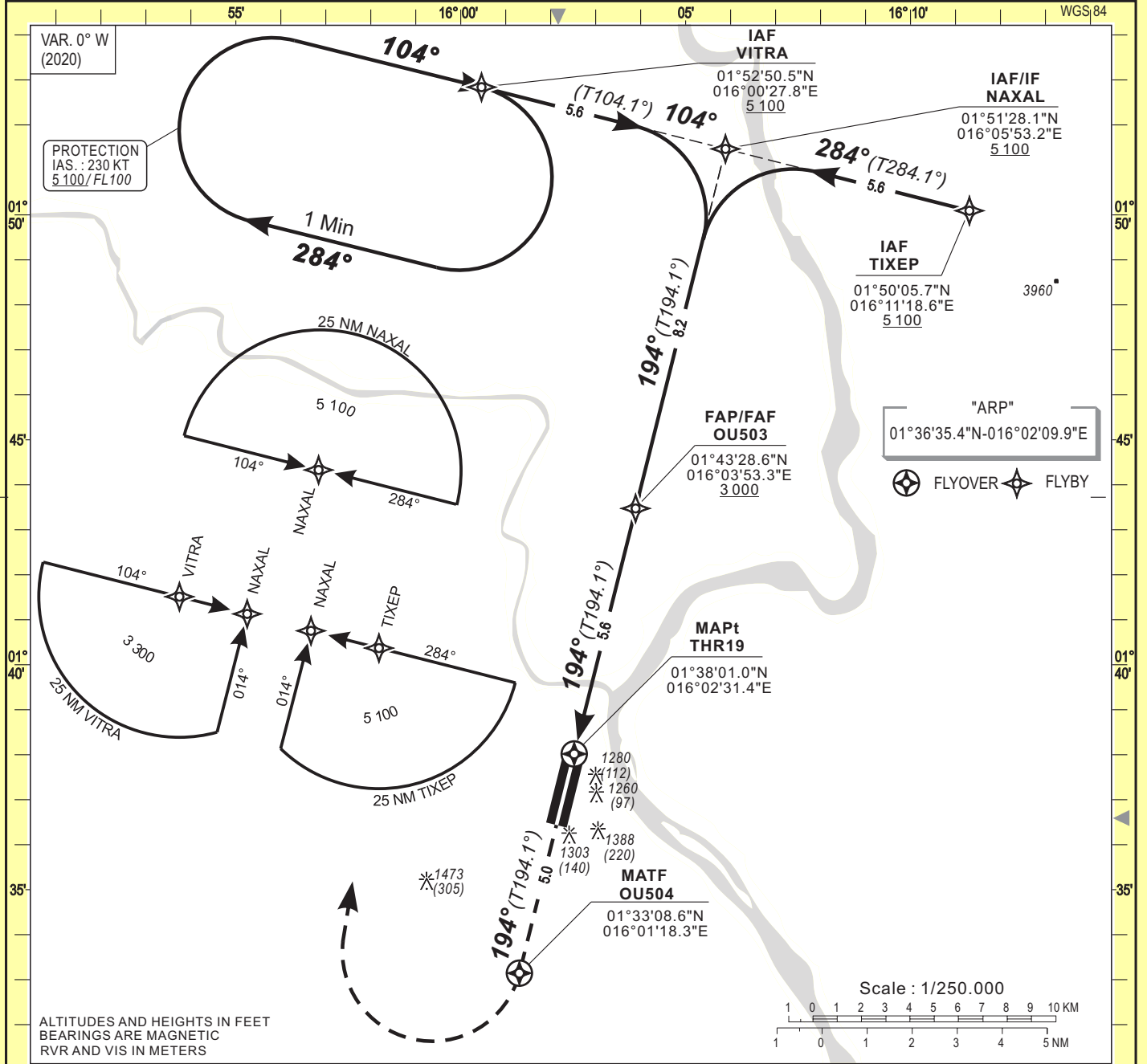
CORRECTIONS : Magnetic variation, altitude table.

INSTRUMENT APPROACH CHART
Categories A-B-C-D

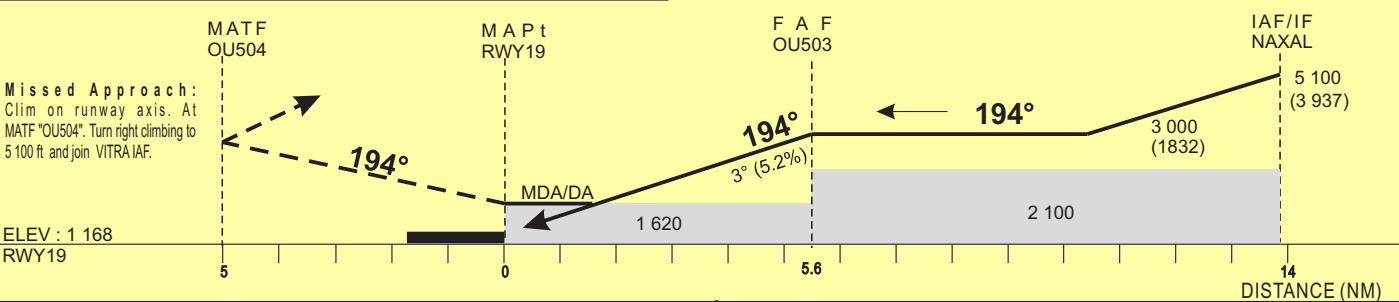
ELEV. : 1168
THR : 1168
HEIGHTS RELATED TO THR 19 ELEVATION

AFIS: 118.1

OUESSO (FCOU)
RNP - RWY 19



Distance to THR (NM)	FAP/FAF	4	3	2	TRANSITION ALTITUDE : 6 000
Altitude (ft)	3 000	2 500	2 180	1 860	



CAT	LNAV				LNAV/VNAV				M V L (*)				RVR for take-off CATA - B - C - D : 400
	OCA (OCH)	MDA	MDH	RVR	OCA (OCH)	DA	DH	RVR	OCA (OCH)	MDA	MDH	VH	
A	1618 (450)	1620 (450)	1500	1430 (262)	1430 (270)	1500	1644 (476)	1650 (480)	1500				
B	1618 (450)	1620 (450)	1500	1440 (272)	1440 (280)	1500	1699 (531)	1700 (540)	1600				
C	1618 (450)	1620 (450)	2000	1450 (282)	1450 (290)	1800	1926 (758)	1930 (760)	2400				
D	1618 (450)	1620 (450)	2000	1460 (292)	1460 (300)	2000	2054 (886)	2060 (890)	3600				

Notes : - (*) Daytime only - OCH and MDH AAL - Minimum temperature: 15° C - RDH 15 m.
- LNAV/VNAV not authorized with a remote QNH.

PROCEDURE TO BE USED ACCORDING TO AIC NR 02/A/2002 DAKAR - 21 MARCH 2002

Timing		FAP / THR	
KT	MIN SEC	KT	MIN SEC
100	3 Min 22	150	2 Min 14
110	3 Min 03	160	2 Min 06
120	2 Min 48	170	1 Min 59
130	2 Min 35	180	1 Min 52

CORRECTIONS : Magnetic variation, altitude table.