

Phone : +(242) 05 377 95 54  
+(242) 05 377 95 64  
AFTN : FCCCNYX  
E-mail : bnibrazza@yahoo.fr  
aim-fccc@asecna.org  
Web : https://aim.asecna.aero



**BUREAU NOTAM INTERNATIONAL  
DE L'AFRIQUE CENTRALE**

B.P. 660 BRAZZAVILLE - CONGO

CAMEROUN – CENTRAFRIQUE – CONGO – GABON – GUINEE ÉQUATORIALE – SAO TOME – TCHAD

**AIRAC AIP SUP**

**NR 54/B/26FC**

**11 JUN 2026**

**TCHIBANGA/ Antoine de Padoue MBOUMBOU  
MIYAKOU- FOOT**

**MISE A JOUR DES PROCEDURES DE VOL IFR  
IFR FLIGHT PROCEDURES UPDATE**

Effective date	<b>09 JUL 2026</b>
Validity	<b>PERM</b>

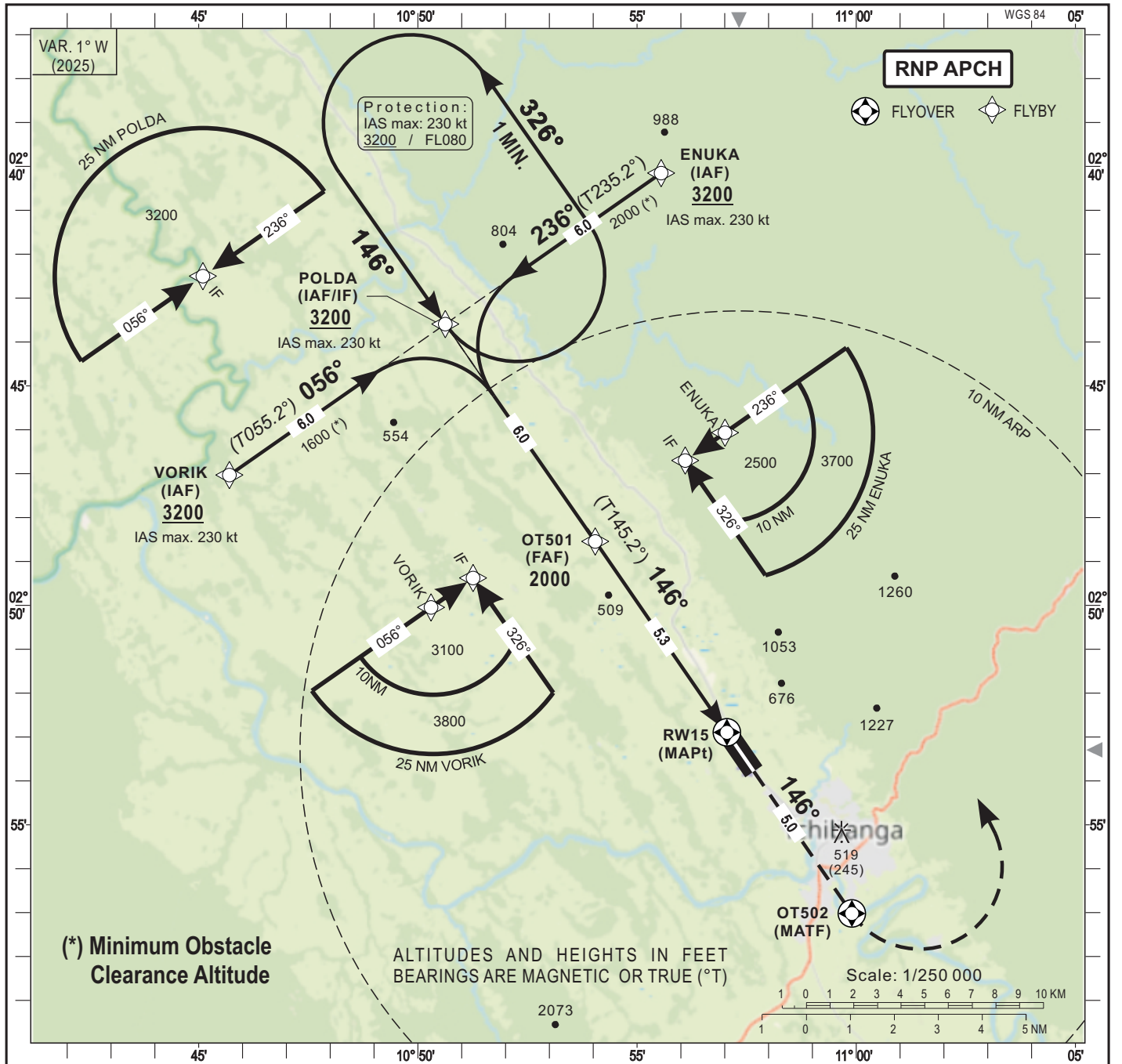
Ce SUP d'AIP informe les usagers sur la mise à jour  
procédures de vol IFR de l'aérodrome de TCHIBANGA  
/Antoine de Padoue MBOUMBOU MIYAKOU

*This AIP SUP informs users of the update of IFR flight  
procedures at TCHIBANGA /Antoine de Padoue  
MBOUMBOU MIYAKOU aerodrome*

**ASECNA AIP MOFIFY PAGES**

07AD2-FOOT-IAC-RNP 15  
07AD2-FOOT-IAC-RNP 15-DATA  
07AD2-FOOT-IAC-RNP 33  
07AD2-FOOT-IAC-RNP 33-DATA

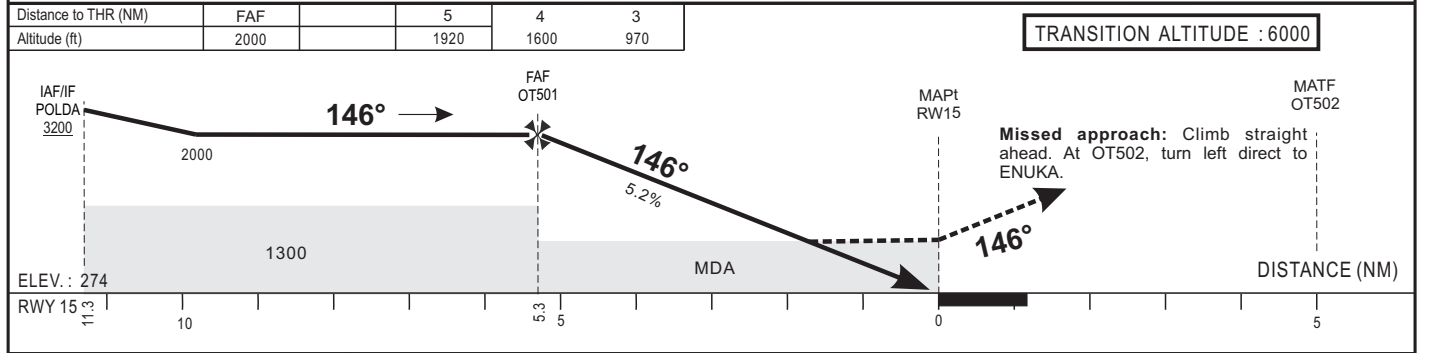
***CE SUP AIP COMPORTE 01 PAGE ET 04 ANNEXES /  
THIS AIP SUP HAS 01 PAGE AND 04 ANNEXES***



(\*) Minimum Obstacle Clearance Altitude

ALTITUDES AND HEIGHTS IN FEET  
BEARINGS ARE MAGNETIC OR TRUE (°T)

**TRANSITION ALTITUDE : 6000**



CAT	LNAV				Circling <b>1</b>			RVR for take-off: CATA-B-C-D: 400
	OCA (OCH)	MDA	MDH	RVR	OCA (OCH)	MDA	MDH	
A				1500	971 (697)	980 (700)	1500	
B				1500	1348 (1074)	1350 (1080)	1600	
C	755 (481)	760 (490)		2000	1621 (1347)	1630 (1350)	2400	
D				2000	1654 (1380)	1660 (1380)	3600	

Timing		FAF / THR 5.3 NM	
KT	MIN SEC	KT	MIN SEC
90	3 Min 32	140	2 Min 16
100	3 Min 11	150	2 Min 07
110	2 Min 53	160	1 Min 59
120	2 Min 39	170	1 Min 52
130	2 Min 27	180	1 Min 46

Notes: - RDH : 15 m  
**1** Daytime only

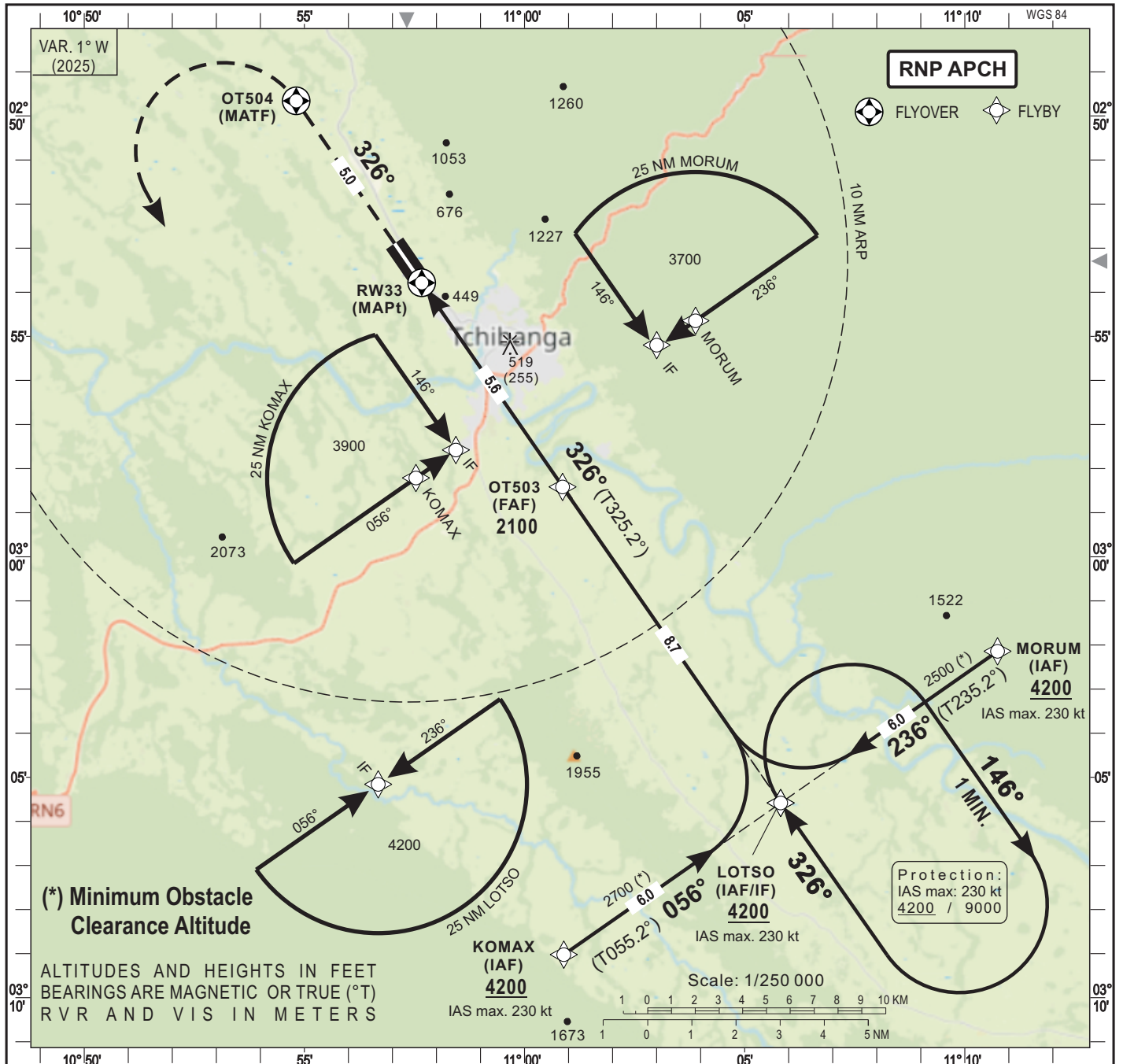
CORRECTIONS: AD Name

**TABULAR DESCRIPTION**

**RNP RWY 15**

Serial Number	Path Descriptor	Waypoint Identifier	Fly-Over	Course °M(°T)	Magnetic Variation	Distance (NM)	Turn Direction	Altitude (ft)	Speed limit (Kt)	VPA / TCH	Navigation Specification
10	IF	ENUKA	-					+3200	-230	-	RNP APCH
20	TF	POLDA	-	236(235.2)		6.0		+3200	-230	-	RNP APCH
10	IF	VORIK	-					+3200	-230	-	RNP APCH
20	TF	POLDA	-	056(055.2)		6.0		+3200	-230	-	RNP APCH
10	IF	POLDA	-					+3200	-230	-	RNP APCH
20	TF	OT501	-	146(145.2)		6.0		@2000	-	-	RNP APCH
30	TF	RW15	Y	146(145.2)	+1.0	5.3		@324	-	-3/15	RNP APCH
40	CF	OT502	Y	146(145.2)			L	-	-	-	RNP APCH
50	DF	ENUKA	-					+3200	-230	-	RNP APCH
10	IF	POLDA	-					+3200	-230	-	RNP APCH
20	HM	POLDA	Y	146(145.2)			L	+3200	-230	-	RNP APCH

RNP RWY 15		
Waypoint Identifier	Coordinates	
ENUKA	02°40'09.189"S	010°55'32.964"E
POLDA	02°43'35.573"S	010°50'37.498"E
VORIK	02°47'01.937"S	010°45'42.004"E
OT501	02°48'32.708"S	010°54'02.726"E
RW15	02°52'53.528"S	010°57'02.881"E
OT502	02°57'01.134"S	010°59'53.935"E



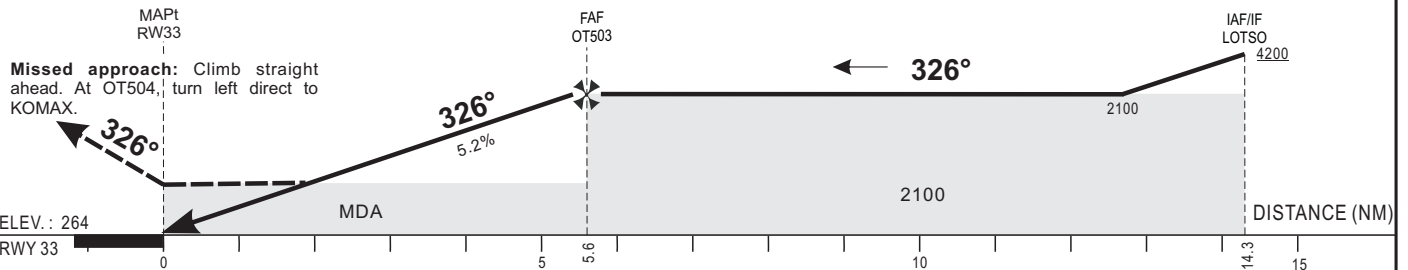
**(\*) Minimum Obstacle Clearance Altitude**

ALTITUDES AND HEIGHTS IN FEET  
BEARINGS ARE MAGNETIC OR TRUE (°T)  
RVR AND VIS IN METERS

**TRANSITION ALTITUDE : 6000**

Distance to THR (NM)	3	4	5	FAF
Altitude (ft)	960	1590	1970	2100

**Missed approach:** Climb straight ahead. At OT504, turn left direct to KOMAX.



CORRECTIONS: AD Name

CAT	LNAV				Circling <b>1</b>			
	OCA (OCH)	MDA	MDH	RVR	OCA (OCH)	MDA	MDH	VIS
A				1500	971 (697)	980 (700)		1500
B				1500	1348 (1074)	1350 (1080)		1600
C	696 (432)	700 (440)		2000	1621 (1347)	1630 (1350)		2400
D				2000	1654 (1380)	1660 (1380)		3600

RVR for take-off:  
CATA-B-C-D: 400

KT	Timing		FAF / THR 5.6 NM		
	MIN	SEC	KT	MIN SEC	
90	3	44	140	2	24
100	3	22	150	2	14
110	3	03	160	2	06
120	2	48	170	1	59
130	2	35	180	1	52

Notes: - RDH: 15 m  
**1** Daytime only

**TABULAR DESCRIPTION**

**RNP RWY 33**

Serial Number	Path Descriptor	Waypoint Identifier	Fly- Over	Course °M(°T)	Magnetic Variation	Distance (NM)	Turn Direction	Altitude (ft)	Speed limit (Kt)	VPA / TCH	Navigation Specification
10	IF	MORUM	-					+4200	-230	-	RNP APCH
20	TF	LOTSO	-	236(235.2)		6.0		+4200	230	-	RNP APCH
10	IF	KOMAX	-					+4200	-230	-	RNP APCH
20	TF	LOTSO	-	056(055.2)		6.0		+4200	-230	-	RNP APCH
10	IF	LOTSO	-					+4200	-230	-	RNP APCH
20	TF	OT503	-	326(325.2)		8.7		@2100	-	-	RNP APCH
30	TF	RW33	Y	326(325.2)	+1.0	5.6		@314	-	-3/15	RNP APCH
40	CF	OT504	Y	326(325.2)			L	-	-230	-	RNP APCH
50	DF	KOMAX	-					+4200	-230	-	RNP APCH
10	IF	LOTSO	-					+4200	-230	-	RNP APCH
20	HM	LOTSO	Y	326(325.2)			R	+4200	-230	-	RNP APCH

RNP RWY 33		
Waypoint Identifier	Coordinates	
MORUM	03°02'08.651"S	011°10'44.599"E
LOTSO	03°05'35.072"S	011°05'49.065"E
KOMAX	03°09'01.470"S	011°00'53.499"E
OT503	02°58'24.956"S	011°00'51.848"E
RW33	02°53'47.029"S	010°57'39.839"E
OT504	02°49'39.418"S	010°54'48.801"E