

Phone : +(242) 05 377 95 54
+(242) 05 377 95 64
AFTN : FCCCYNXX
E-mail : bnibrazza@yahoo.fr
aim-fccc@asecna.org
Web : https://aim.asecna.aero



**BUREAU NOTAM INTERNATIONAL
DE L'AFRIQUE CENTRALE**

B.P. 660 BRAZZAVILLE - CONGO

CAMEROUN – CENTRAFRIQUE – CONGO – GABON – GUINEE ÉQUATORIALE – SAO TOME – TCHAD

AIRAC AIP SUP

NR 52/B/26FC

11 JUN 2026

OYEM/EWORMEKOK - FOGO

MISE A JOUR DES PROCEDURES DE VOL IFR IFR FLIGHT PROCEDURES UPDATE

Effective date	09 JUL 2026
Validity	PERM

Ce SUP d'AIP informe les usagers sur la mise à jour des procédures de vol IFR de l'aérodrome de OYEM/EWORMEKOK

This AIP SUP informs users of the update of IFR flight procedures at OYEM/EWORMEKOK aerodrome

ASECNA AIP MODIFY PAGES

07AD2-FOGO-IAC-RNP 03
07AD2-FOGO-IAC-RNP 03-DATA
07AD2-FOGO-IAC-RNP 21
07AD2-FOGO-IAC-RNP 21-DATA

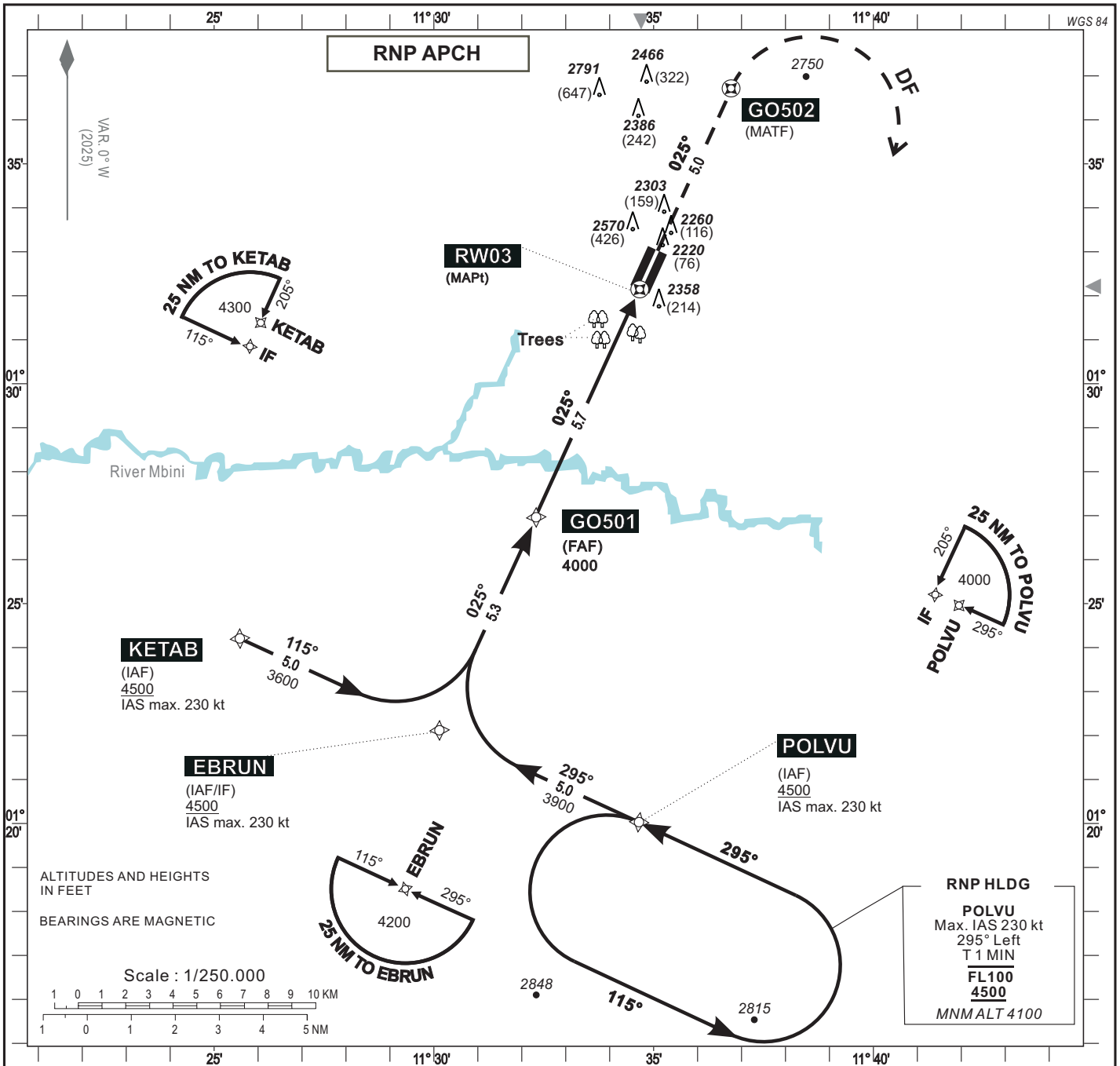
***CE SUP AIP COMPORTE 01 PAGE ET 04 ANNEXES /
THIS AIP SUP HAS 01 PAGE AND 04 ANNEXES***

**INSTRUMENT
APPROACH CHART**
Categories A-B-C-D

AERODROME ELEV : 2165
THR RWY 03 ELEV : 2144
HEIGHTS RELATED TO THR RWY 03 ELEVATION

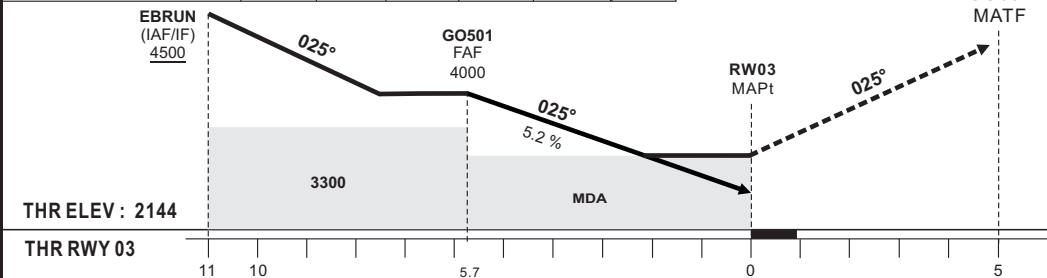
AFIS : OYEM INFORMATION 118.4

OYEM / EWORMEKOK (FOGO)
RNP RWY 03



Distance to THR 03 (NM)	FAF	5	4	3	2	RW03
Altitude (ft)	4000	3790	3470	3150	2835	

TRANSITION ALTITUDE : 6000



MISSED APPROACH
Climb straight ahead.
At GO502, turn right direct to POLVU at/or above 4500 ft.
IAS max. 230 kt.

CORRECTIONS: AD Name

CAT	LNAV					CIRCLING (1)				
	OCA	OCH	MDA	MDH	RVR	OCA	OCH	MDA	MDH	VIS
A					1500	2866	(701)	2870	(710)	1500
B	2688	(544)	2690	(550)	1500	2993	(828)	3000	(830)	1600
C					2000	3185	(1020)	3190	(1020)	2400
D					2000	3209	(1044)	3210	(1050)	3600

Timing : FAF/THR 5.7 NM					
KT	MIN	SEC	KT	MIN	SEC
90	3	Min 48	140	2	Min 27
100	3	Min 25	150	2	Min 17
110	3	Min 07	160	2	Min 08
120	2	Min 51	170	2	Min 01
130	2	Min 38	180	1	Min 54

Notes : (1) Daytime only. OCH and MDH AAL
RVR AND VIS IN METERS
TCH : 15 m

TABULAR DESCRIPTION

RNP RWY 03											
Serial Number	Path Descriptor	Waypoint Identifier	Fly-Over	Course °M(°T)	Magnetic Variation	Distance (NM)	Turn Direction	Altitude (ft)	Speed limit (Kt)	VPA/TCH (°/m)	Navigation Specification
10	IF	POLVU	-	-	-	-	-	+4500	-230	-	RNP APCH
20	TF	EBRUN	-	295 (294.6)	-	5.0	-	+4500	-230	-	RNP APCH
10	IF	KETAB	-	-	-	-	-	+4500	-230	-	RNP APCH
20	TF	EBRUN	-	115 (114.6)	-	5.0	-	+4500	-230	-	RNP APCH
10	IF	EBRUN	-	-	-	-	-	+4500	-230	-	RNP APCH
20	TF	GO501	-	025 (024.6)	-	5.3	-	@4000	-	-	RNP APCH
30	TF	RW03	Y	025 (024.6)	0	5.7	-	@2194	-	-3.0/15	RNP APCH
40	CF	GO502	Y	025 (024.6)	-	-	-	-	-230	-	RNP APCH
50	DF	POLVU	-	-	-	-	R	+4500	-230	-	RNP APCH
10	IF	POLVU	-	-	-	-	-	+4500	-230	-	RNP APCH
20	HM	POLVU	Y	295 (294.6)	-	-	L	+4500	-230	-	RNP APCH

WYPOINTS LIST

RNP RWY 03		
Waypoint Identifier	Latitude	Longitude
GO501	01°26'57.611"N	011°32'19.724"E
GO502	01°36'42.977"N	011°36'45.593"E
RW03	01°32'08.786"N	011°34'41.052"E
EBRUN	01°22'06.963"N	011°30'07.730"E
KETAB	01°24'12.280"N	011°25'35.285"E
POLVU	01°20'01.637"N	011°34'40.166"E

CORRECTIONS: AD Name

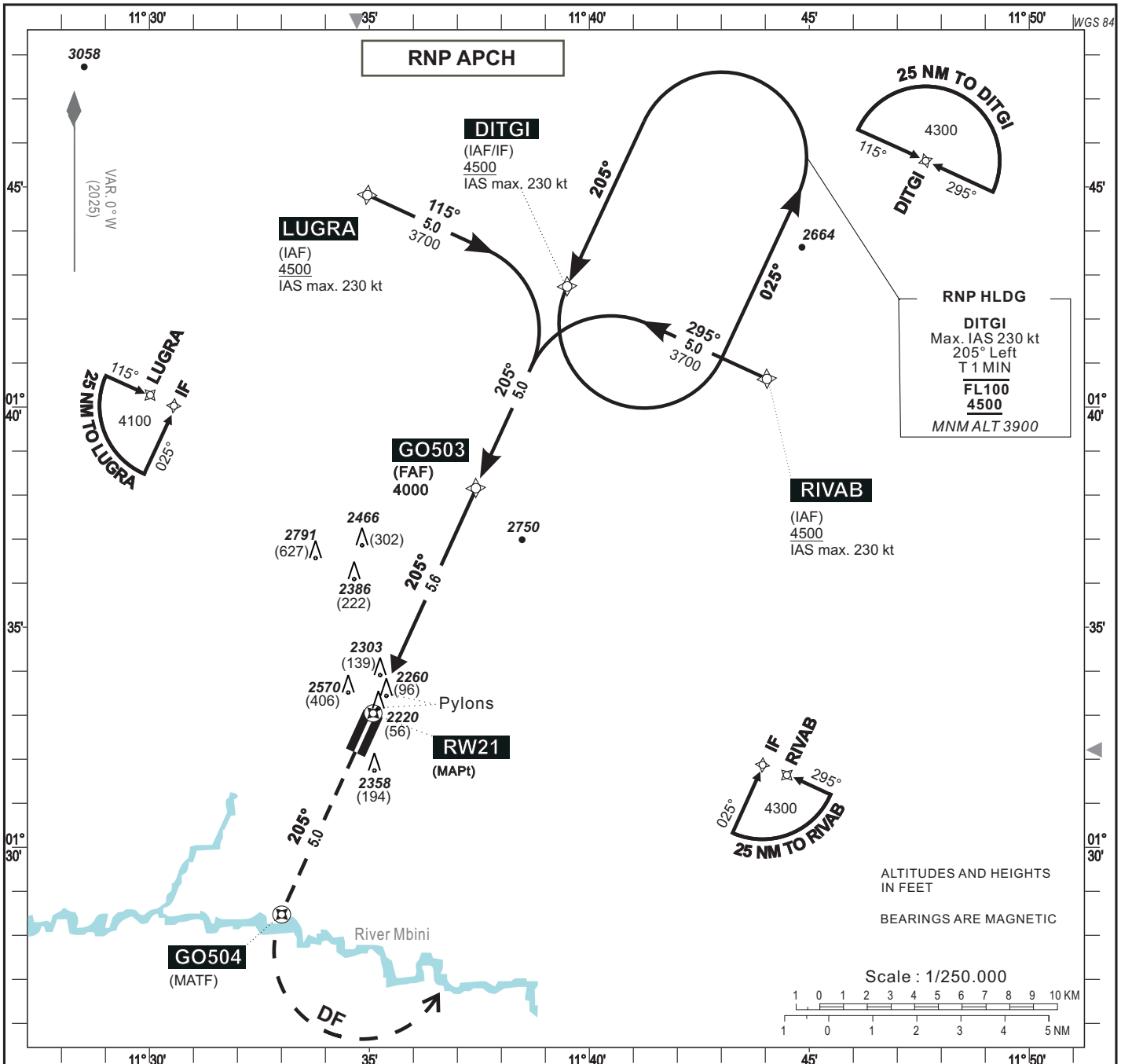
INSTRUMENT APPROACH CHART
Categories A-B-C-D

AERODROME ELEV : 2165
THR RWY 21 ELEV : 2164

AFIS : OYEM INFORMATION 118.4

OYEM / EWORMEKOK (FOGO)
RNP RWY 21

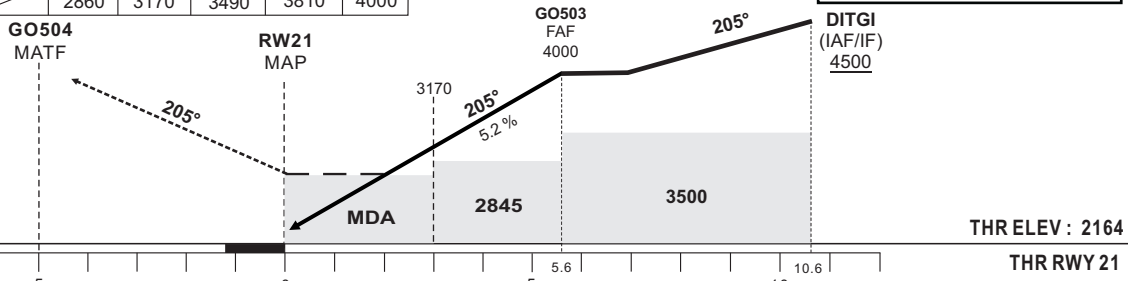
HEIGHTS RELATED TO THR RWY 21 ELEVATION



Distance to THR 21 (NM)	RW21	2	3	4	5	FAF
Altitude (ft)		2860	3170	3490	3810	4000

TRANSITION ALTITUDE : 6000

MISSED APPROACH
GO504 MATF
Climb straight ahead.
At GO504, turn left direct to RIVAB at/or above 4500 ft.
IAS max. 230 kt.
Do not turn before MAPt



DISTANCE (NM)	5	0	5	5.6	10	10.6	THR RWY 21
---------------	---	---	---	-----	----	------	------------

CAT	LNAV			CIRCLING (1)			VIS	Timing : FAF/THR 5.6 NM
	OCA	OCH	MDA MDH	OCA	OCH	MDA MDH		
A				1500	2866 (701)	2870 (710)	1500	
B	2709 (545)	2710 (550)		1500	2993 (828)	3000 (830)	1600	
C				2000	3185 (1020)	3190 (1020)	2400	
D				2000	3209 (1044)	3210 (1050)	3600	

Notes : (1) Daytime only. OCH and MDH AAL
RVR AND VIS IN METERS
TCH : 15 m

90	3 Min 44	140	2 Min 24
100	3 Min 22	150	2 Min 14
110	3 Min 03	160	2 Min 06
120	2 Min 48	170	1 Min 59
130	2 Min 35	180	1 Min 52

CORRECTIONS: AD Name

TABULAR DESCRIPTION

RNP RWY 21

Serial Number	Path Descriptor	Waypoint Identifier	Fly-Over	Course °M(°T)	Magnetic Variation	Distance (NM)	Turn Direction	Altitude (ft)	Speed limit (Kt)	VPA/TCH (°/m)	Navigation Specification
10	IF	LUGRA	-	-	-	-	-	+4500	-230	-	RNP APCH
20	TF	DITGI	-	115 (114.6)	-	5.0	-	+4500	-230	-	RNP APCH
10	IF	RIVAB	-	-	-	-	-	+4500	-230	-	RNP APCH
20	TF	DITGI	-	295 (294.6)	-	5.0	-	+4500	-230	-	RNP APCH
10	IF	DITGI	-	-	-	-	-	+4500	-230	-	RNP APCH
20	TF	GO503	-	205 (204.6)	-	5.0	-	@4000	-	-	RNP APCH
30	TF	RW21	Y	205 (204.6)	0	5.6	-	@2214	-	-3.0/15	RNP APCH
40	CF	GO504	Y	205 (204.6)	-	-	-	-	-230	-	RNP APCH
50	DF	RIVAB	-	-	-	-	L	+4500	-230	-	RNP APCH
10	IF	DITGI	-	-	-	-	-	+4500	-230	-	RNP APCH
20	HM	DITGI	Y	205 (204.6)	-	-	L	+4500	-230	-	RNP APCH

WYPOINTS LIST

RNP RWY 21

Waypoint Identifier	Latitude	Longitude
GO503	01°38'09.695"N	011°37'24.984"E
GO504	01°28'27.856"N	011°33'00.710"E
RW21	01°33'02.049"N	011°35'05.244"E
DITGI	01°42'43.884"N	011°39'29.538"E
LUGRA	01°44'49.219"N	011°34'57.058"E
RIVAB	01°40'38.537"N	011°44'02.008"E

CORRECTIONS: AD Name