

Phone : +(242) 05 377 95 54  
+(242) 05 377 95 64  
AFTN : FCCCNYX  
E-mail : bnibrazza@yahoo.fr  
aim-fccc@asecna.org  
Web : https://aim.asecna.aero



**BUREAU NOTAM INTERNATIONAL  
DE L'AFRIQUE CENTRALE**

**B.P. 660 BRAZZAVILLE - CONGO**

**AIRAC AIP SUP**

**NR 27/B/26FC**

**27 APR 2026**

**CAMEROUN – CENTRAFRIQUE – CONGO – GABON – GUINEE ÉQUATORIALE – SAO TOME – TCHAD**

# MAYUMBA - FOOY

## NOUVELLES PROCEDURES DE VOL IFR NEW IFR FLIGHT PROCEDURES

*This AIRAC AIP SUP Cancels and Replaces AIRAC AIP SUP NR13/B/26FC  
WEF 14 MAY 2026*

Effective date	14 MAY 2026
Validity	PERM

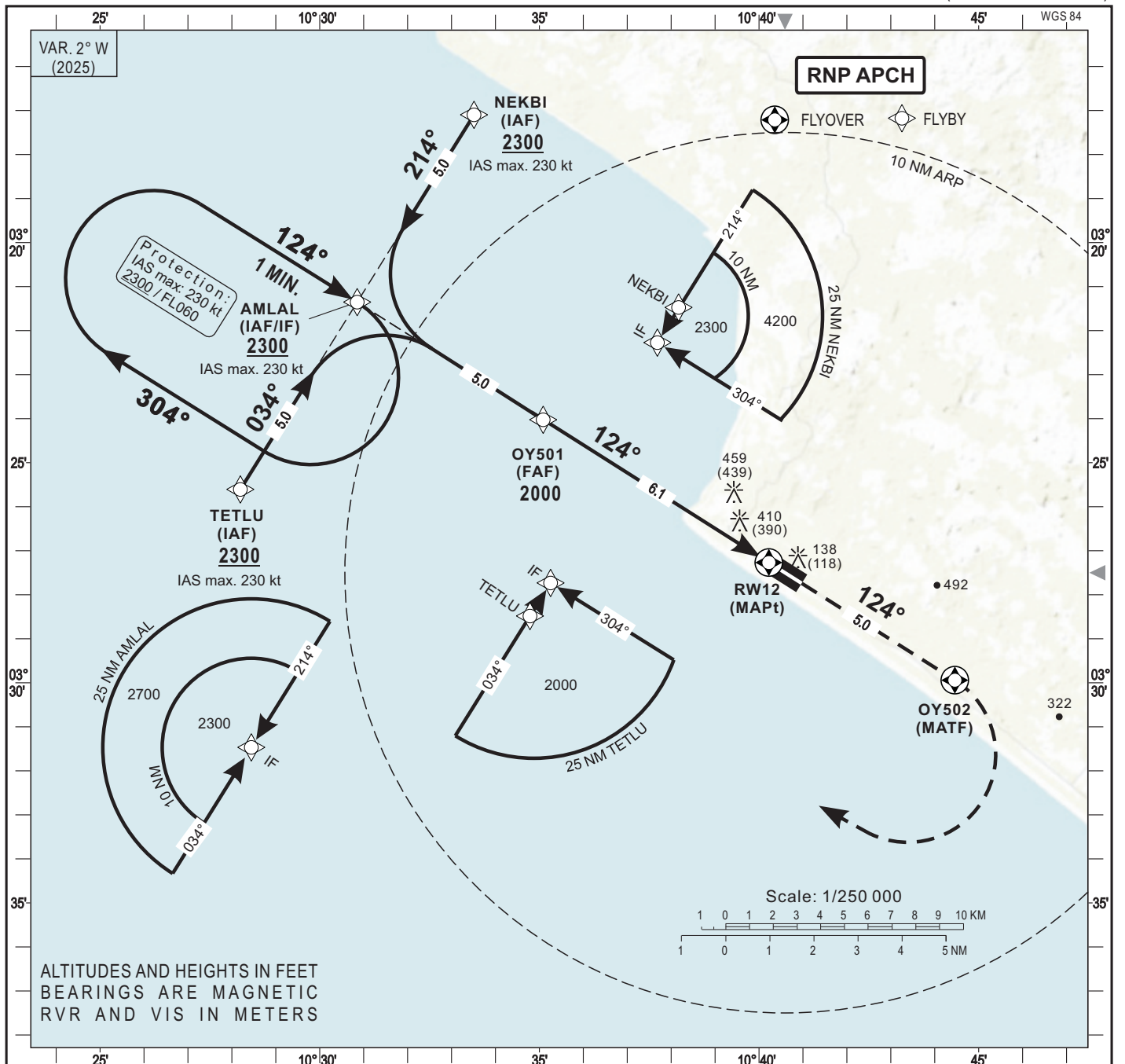
Le présent SUP AIP AIRAC remplace le SUP AIP AIRAC NR13/B/26FC, relatif à la mise en œuvre de nouvelles procédures de vol IFR à l'aérodrome de MAYUMBA (FOOY). Il est publié afin de corriger le cap de la procédure RNP RWY 30 (vue de profil vertical) et de garantir l'intégrité opérationnelle et la sécurité des vols IFR. Toutes les autres informations publiées dans le SUP AIP AIRAC NR13/B/26FC demeurent inchangées.

*This AIRAC AIP Supplement replaces AIRAC AIP SUP NR13/B/26FC, related to the implementation of new IFR flight procedures at MAYUMBA aerodrome (FOOY). It is issued in order to correct the RNP RWY 30 course (vertical profile view) and to ensure the operational integrity and safety of IFR flight operations. All other information contained in AIRAC AIP SUP NR13/B/26FC remains unchanged.*

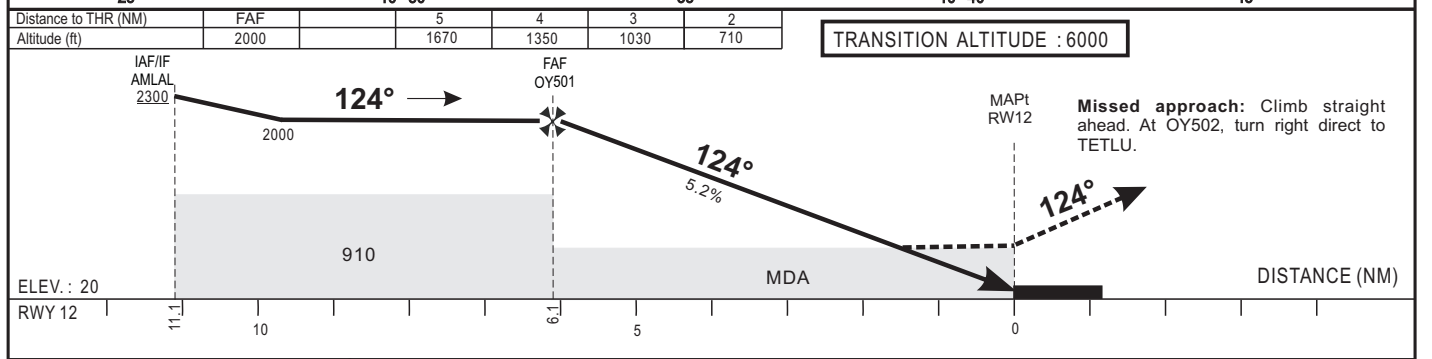
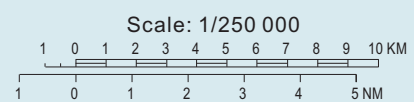
### ASECNA AIP INSERT PAGES

07AD2-FOOY-IAC-RNP12  
07-AD2-FOOY-IAC-RNP12-DATA  
07AD2-FOOY-IAC-RNP30  
07-AD2-FOOY-IAC-RNP30-DATA

***CE SUP AIP COMPORTE 01 PAGE ET 04 ANNEXES /  
THIS AIP SUP HAS 01 PAGE AND 04 ANNEXES***



ALTITUDES AND HEIGHTS IN FEET  
BEARINGS ARE MAGNETIC  
RVR AND VIS IN METERS



CAT	LNAV				Circling <b>1</b>				RVR for take-off: CATA-B-C: 400
	OCA (OCH)	MDA	MDH	RVR	OCA (OCH)	MDA	MDH	VIS	
A				1500	754 (734)	760 (740)		1500	Timing FAF / THR 6.1 NM KT   MIN SEC   KT   MIN SEC 100   3 Min 40   150   2 Min 26 110   3 Min 20   160   2 Min 17 120   3 Min 03   170   2 Min 09 130   2 Min 49   180   2 Min 02
B	657 (637)	660 (640)		1500	814 (794)	820 (800)		1600	
C				2000	965 (945)	970 (950)		2400	

Notes : - RDH : 15 m  
**1** Daytime only

CORRECTIONS : New edition.

**TABULAR DESCRIPTION**

**RNP RWY 12**

Serial Number	Path Descriptor	Waypoint Identifier	Fly- Over	Course °M(°T)	Magnetic Variation	Distance (NM)	Turn Direction	Altitude (ft)	Speed limit (Kt)	VPA / TCH	Navigation Specification
10	IF	NEKBI	-					+2300	-230	-	RNP APCH
20	TF	AMLAL	-	214(212.1)		5.0		+2300	-230	-	RNP APCH
10	IF	TETLU	-					+2300	-230	-	RNP APCH
20	TF	AMLAL	-	034(032.1)		5.0		+2300	-230	-	RNP APCH
10	IF	AMLAL	-					+2300	-230	-	RNP APCH
20	TF	OY501	-	124(122.1)		5.0		@2000	-	-	RNP APCH
30	TF	RW12	Y	124(122.1)	+2.0	6.1		@70	-	-3/15	RNP APCH
40	CF	OY502	Y	124(122.1)		5.0	R	-	-	-	RNP APCH
50	DF	TETLU	-					+2300	-230	-	RNP APCH
10	IF	AMLAL	-					+2300	-230	-	RNP APCH
20	HM	AMLAL	Y	124(122.1)			R	+2300	-230	-	RNP APCH

RNP RWY 12		
Waypoint Identifier	Coordinates	
NEKBI	03°17'05.926"S	010°33'30.701"E
AMLAL	03°21'21.211"S	010°30'51.148"E
TETLU	03°25'36.488"S	010°28'11.571"E
OY501	03°24'01.563"S	010°35'05.173"E
RW12	03°27'16.023"S	010°40'13.304"E
OY502	03°29'56.348"S	010°44'27.372"E

**INSTRUMENT  
APPROACH  
CHART-ICAO**

**AERODROME ELEV 20 FT**

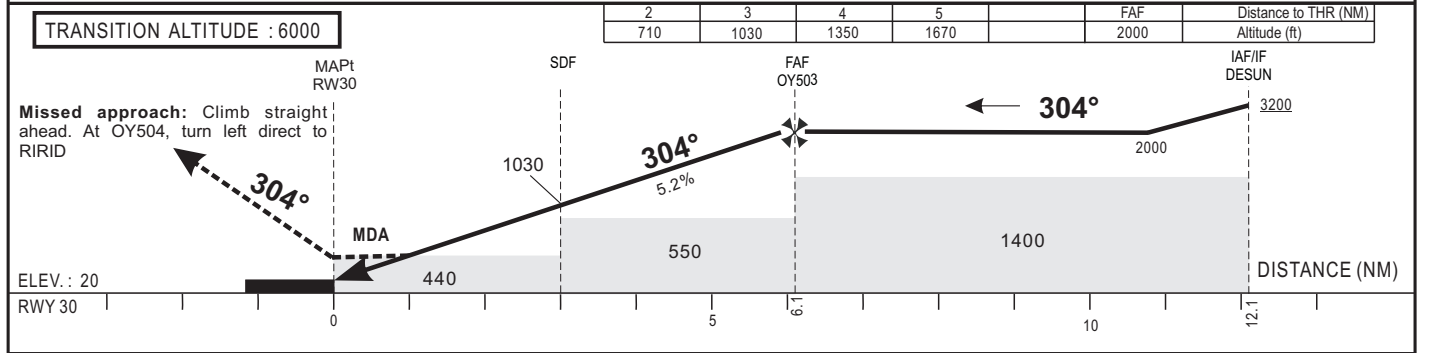
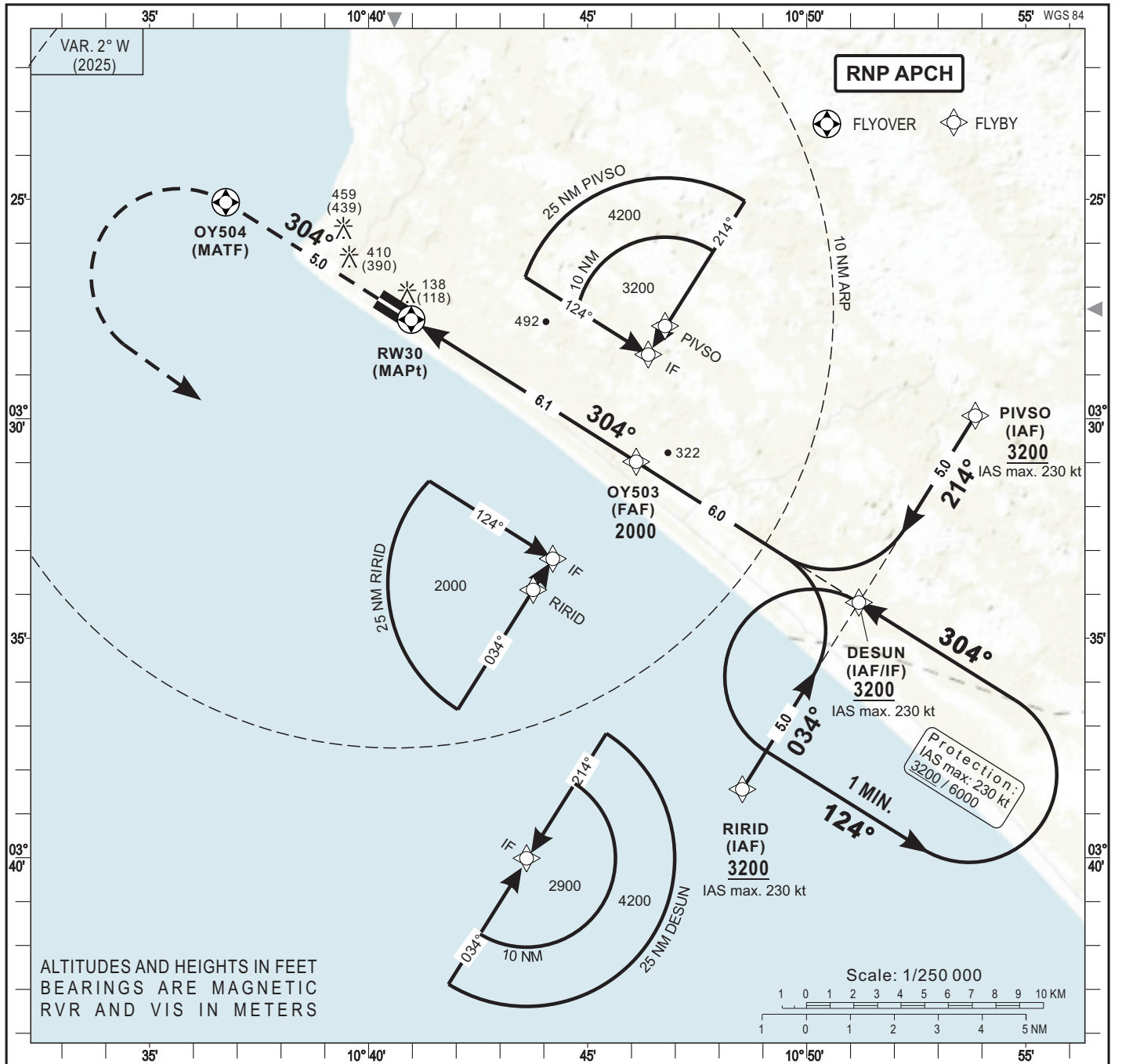
**AFIS ---**

**MAYUMBA (FOOY)**

RNP - RWY 30

(ACFT CAT A, B, C)

HEIGHTS RELATED TO THR RWY30 - ELEV 20 FT



CAT	LNAV				Circling <b>1</b>				RVR for take-off: CATA-B-C: 400
	OCA (OCH)	MDA	MDH	RVR	OCA (OCH)	MDA	MDH	VH	
A				1500	754 (734)	760 (740)	1500		Timing FAF / THR 6.1 NM KT   MIN SEC   KT   MIN SEC 100   3 Min 40   150   2 Min 26 110   3 Min 20   160   2 Min 17 120   3 Min 03   170   2 Min 09 130   2 Min 49   180   2 Min 02
B	434 (414)	440 (420)		1500	814 (794)	820 (800)	1600		
C				2000	965 (945)	970 (950)	2400		

Notes: - RDH: 15 m  
**1** Daytime only

CORRECTIONS : New edition.

**TABULAR DESCRIPTION**

**RNP RWY 30**

Serial Number	Path Descriptor	Waypoint Identifier	Fly- Over	Course °M(°T)	Magnetic Variation	Distance (NM)	Turn Direction	Altitude (ft)	Speed limit (Kt)	VPA / TCH	Navigation Specification
10	IF	PIVSO	-					+3200	-230	-	RNP APCH
20	TF	DESUN	-	214(212.1)		5.0		+3200	-230	-	RNP APCH
10	IF	RIRID	-					+3200	-230	-	RNP APCH
20	TF	DESUN	-	034(032.1)		5.0		+3200	-230	-	RNP APCH
10	IF	DESUN	-					+3200	-230	-	RNP APCH
20	TF	OY503	-	304(302.1)		6.0		@2000	-	-	RNP APCH
30	TF	RW30		304(302.1)	+2.0	6.1		@70	-	-3/15	RNP APCH
40	CF	OY504		304(302.1)			L	-	-230	-	RNP APCH
50	DF	RIRID	-					+3200	-230	-	RNP APCH
10	IF	DESUN	-					+3200	-230	-	RNP APCH
20	HM	DESUN	Y	304(302.1)			L	+3200	-230	-	RNP APCH

RNP RWY 30		
Waypoint Identifier	Coordinates	
PIVSO	03°29'55.834"S	010°53'50.895"E
DESUN	03°34'11.175"S	010°51'11.397"E
RIRID	03°38'26.509"S	010°48'31.875"E
OY503	03°30'58.838"S	010°46'06.462"E
RW30	03°27'44.410"S	010°40'58.291"E
OY504	03°25'04.022"S	010°36'44.272"E