

Phone : +(242) 05 377 95 54
+(242) 05 377 95 64
AFTN : FCCCNYX
E-mail : bnibrazza@yahoo.fr
aim-fccc@asecna.org
Web : https://aim.asecna.aero



**BUREAU NOTAM INTERNATIONAL
DE L'AFRIQUE CENTRALE**

B.P. 660 BRAZZAVILLE - CONGO

AIRAC AIP SUP

NR 25/B/26FC

16 APR 2026

CAMEROUN – CENTRAFRIQUE – CONGO – GABON – GUINEE ÉQUATORIALE – SAO TOME – TCHAD

KOULAMOUTOU - FOGK

NOUVELLES PROCEDURES DE VOL IFR *NEW IFR FLIGHT PROCEDURES*

This AIRAC AIP SUP Cancels and Replaces NR 17/B/26FC

Effective date	14 MAY 2026
Validity	PERM

Ce SUP d'AIP informe les usagers sur la publication des nouvelles procédures de vol IFR de l'aérodrome de KOULAMOUTOU

This AIP SUP inform users of the publication of new IFR flight procedures at KOULAMOUTOU aerodrome

ASECNA AIP INSERT PAGES

07AD2-FOGK-IAC-RNP15
07AD2-FOGK-IAC-RNP15-DATA
07AD2-FOGK-IAC-RNP33
07AD2-FOGK-IAC-RNP33-DATA

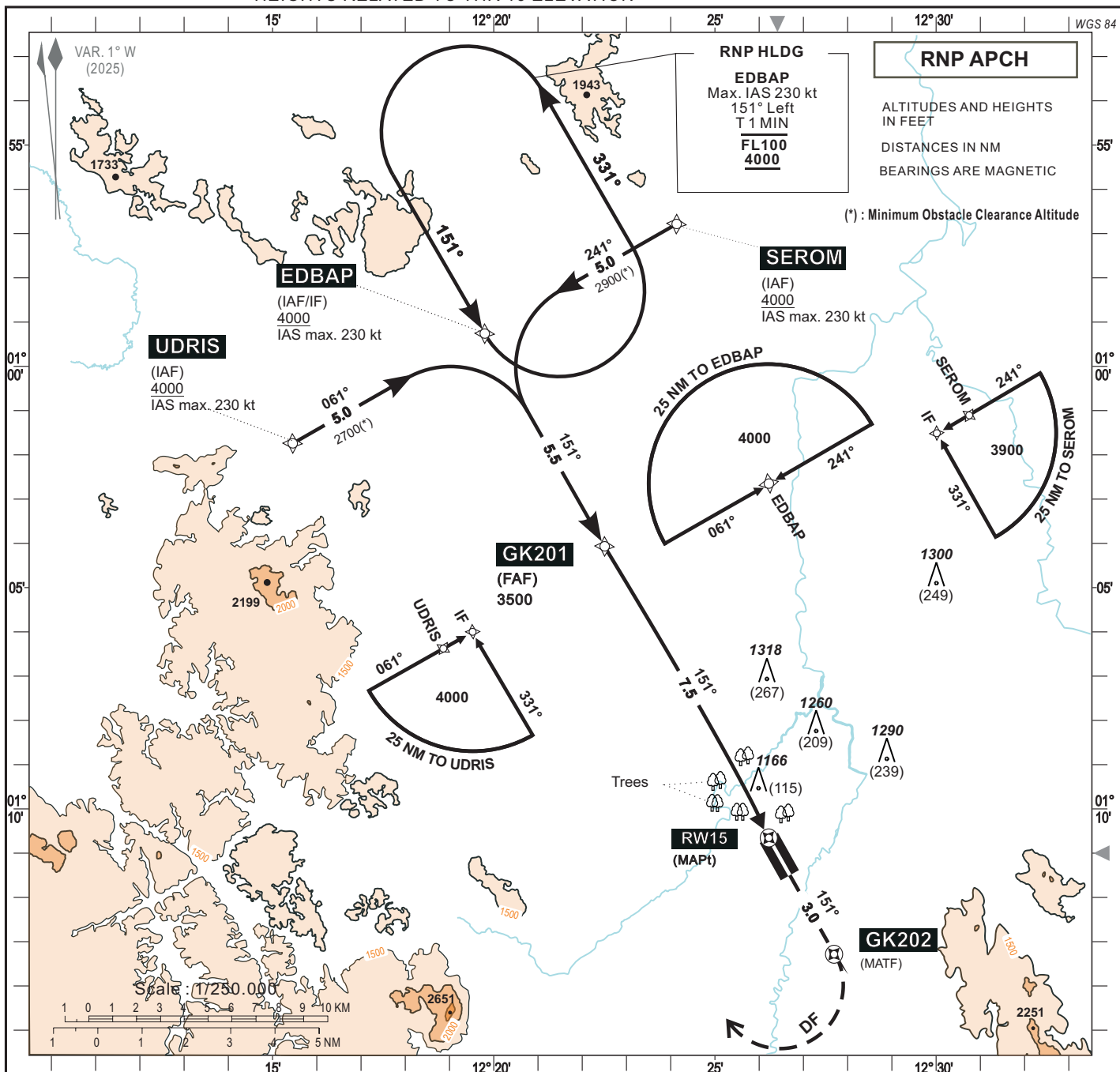
***CE SUP AIP COMPORTE 01 PAGE ET 04 ANNEXES /
THIS AIP SUP HAS 01 PAGE AND 04 ANNEXES***

INSTRUMENT APPROACH CHART
Categories A-B-C-D

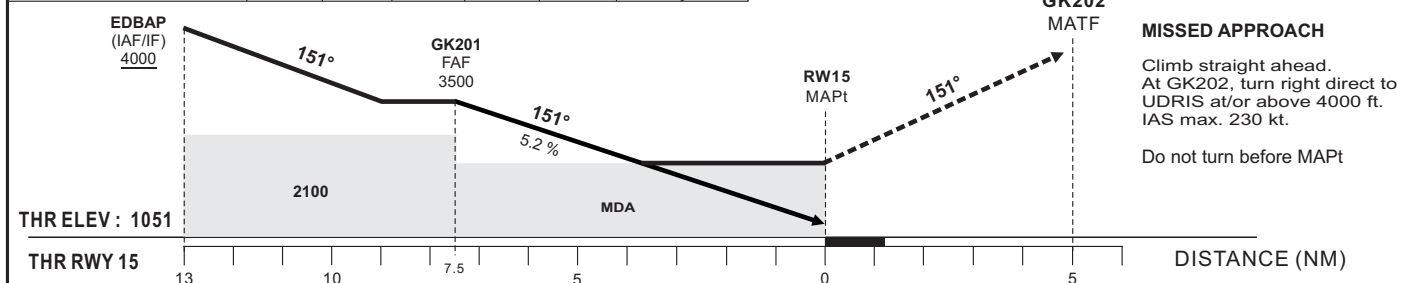
AERODROME ELEV : 1051
THR RWY 15 ELEV : 1051
HEIGHTS RELATED TO THR 15 ELEVATION

AFIS : KOULAMOUTOU INFORMATION 122.75

KOULAMOUTOU (FOGK)
RNP RWY 15



Distance to THR 15 (NM)	FAF	7	6	5	4	3	RW15
Altitude (ft)	3500	3330	3015	2695	2375	2060	



CAT	LNAV					CIRCLING (1)					Timing : FAF/THR 7.5 NM	
	OCA	OCH	MDA	MDH	RVR	OCA	OCH	MDA	MDH	VIS		
A					1500	1867 (816)	1870 (820)	1500			90 5 Min 00	140 3 Min 13
B	1786 (735)	1790 (740)			1500	1900 (849)	1900 (850)	1600			100 4 Min 30	150 3 Min 00
C					2000	2573 (1522)	2580 (1530)	2400			110 4 Min 05	160 2 Min 49
D					2000	2573 (1522)	2580 (1530)	3600			120 3 Min 45	170 2 Min 39
											130 3 Min 28	180 2 Min 30

Notes: (1) Daytime only. OCH and MDH AAL
RVR AND VIS IN METERS
TCH : 15 m

NEW EDITION

TABULAR DESCRIPTION

RNP RWY 15

Serial Number	Path Descriptor	Waypoint Identifier	Fly-Over	Course °M(°T)	Magnetic Variation	Distance (NM)	Turn Direction	Altitude (ft)	Speed limit (Kt)	VPA/TCH (°/m)	Navigation Specification
10	IF	UDRIS	-	-	-	-	-	+4000	-230	-	RNP APCH
20	TF	EDBAP	-	061 (060.4)	-	5.0	-	+4000	-230	-	RNP APCH
10	IF	SEROM	-	-	-	-	-	+4000	-230	-	RNP APCH
20	TF	EDBAP	-	241 (240.4)	-	5.0	-	+4000	-230	-	RNP APCH
10	IF	EDBAP	-	-	-	-	-	+4000	-230	-	RNP APCH
20	TF	GK201	-	151 (150.4)	-	5.5	-	@3500	-	-	RNP APCH
30	TF	RW15	Y	151 (150.4)	+1	7.5	-	@1101	-	-3.0/15	RNP APCH
40	CF	GK202	Y	151 (150.4)	-	-	-	-	-230	-	RNP APCH
50	DF	UDRIS	-	-	-	-	R	+4000	-230	-	RNP APCH
10	IF	EDBAP	-	-	-	-	-	+4000	-230	-	RNP APCH
20	HM	EDBAP	-	151 (150.4)	-	-	L	+4000	-230	-	RNP APCH

WAYPOINTS LIST

RNP RWY 15

Waypoint Identifier	Latitude	Longitude
GK201	01°04'04.177"S	012°22'30.239"E
GK202	01°13'16.609"S	012°27'41.787"E
SEROM	00°56'46.949"S	012°24'08.075"E
UDRIS	01°01'44.588"S	012°15'27.130"E
EDBAP	00°59'15.771"S	012°19'47.605"E
RW15	01°10'39.300"S	012°26'13.067"E

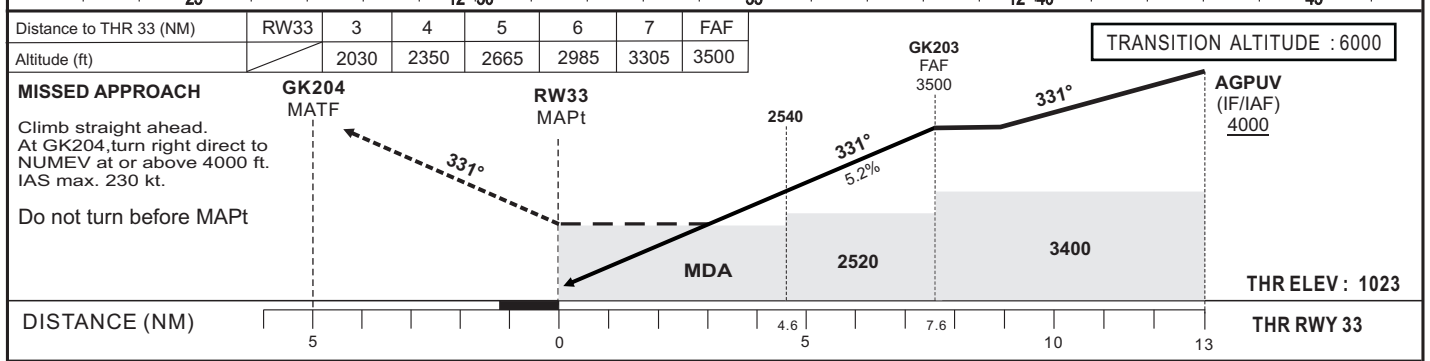
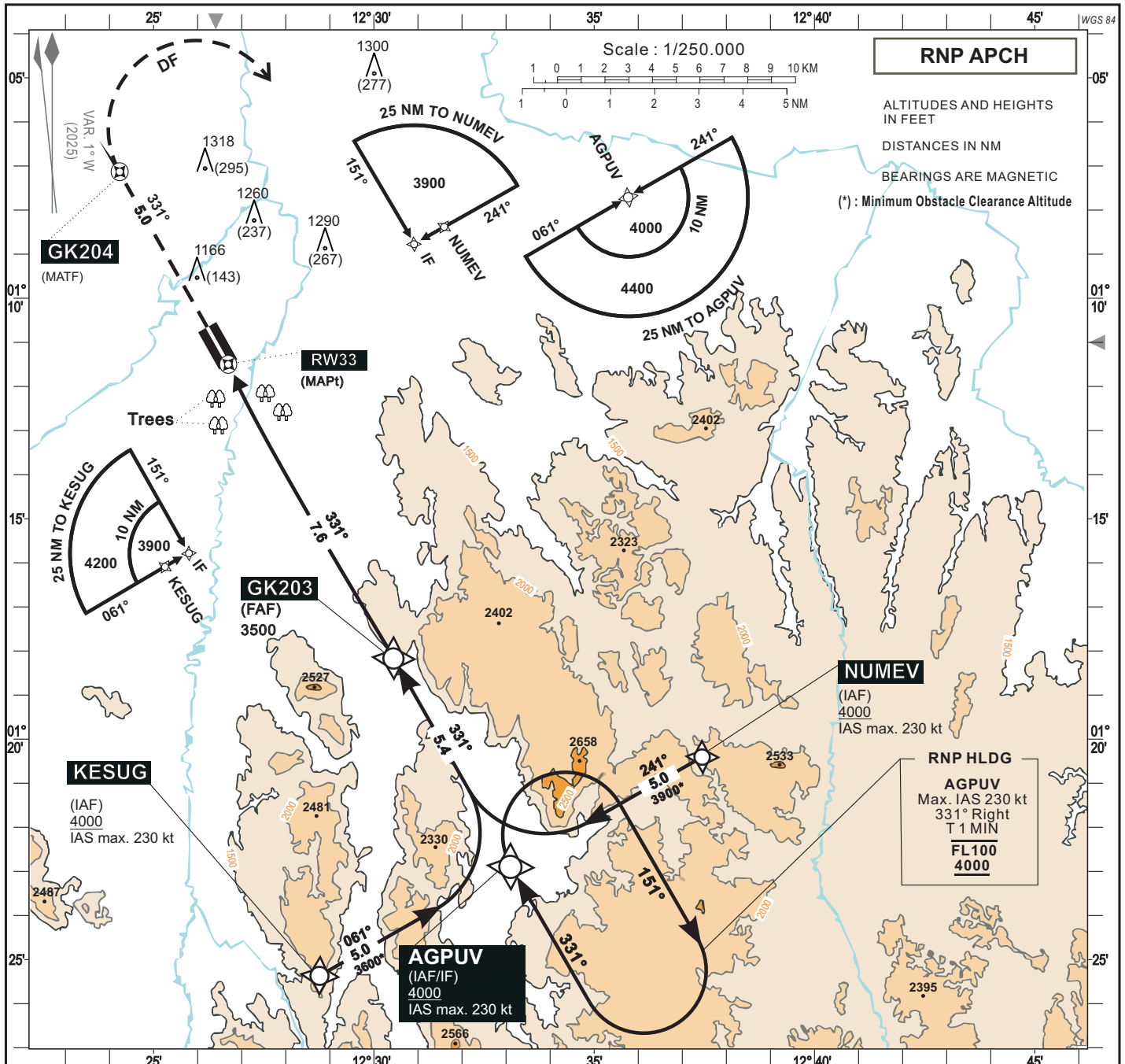
NEW EDITION

INSTRUMENT APPROACH CHART
Categories A-B-C-D

AERODROME ELEV : 1051
THR RWY 33 ELEV : 1023
HEIGHTS RELATED TO THR RWY 33 ELEVATION

AFIS : KOULAMOUTOU INFORMATION 122.75

KOULAMOUTOU (FOGK)
RNP RWY 33



CAT	LNAV					CIRCLING (1)					Timing : FAF/THR 7.6 NM
	OCA	OCH	MDA	MDH	RVR	OCA	OCH	MDA	MDH	VIS	
A					1500	1867 (816)	1870 (820)	1500			KT MIN SEC KT MIN SEC 90 5 Min 04 140 3 Min 15 100 4 Min 34 150 3 Min 02 110 4 Min 09 160 2 Min 51 120 3 Min 48 170 2 Min 41 130 3 Min 30 180 2 Min 32
B	1798 (775)	1800 (780)			1500	1900 (849)	1900 (850)	1600			
C					2000	2573 (1522)	2580 (1530)	2400			
D					2000	2573 (1522)	2580 (1530)	3600			

Notes : (1) Daytime only. OCH and MDH AAL
RVR AND VIS IN METERS
TCH : 15 m

TABULAR DESCRIPTION

RNP RWY 33

Serial Number	Path Descriptor	Waypoint Identifier	Fly-Over	Course °M(°T)	Magnetic Variation	Distance (NM)	Turn Direction	Altitude (ft)	Speed limit (Kt)	VPA/TCH (°/m)	Navigation Specification
10	IF	KESUG	-	-	-	-	-	+4000	-230	-	RNP APCH
20	TF	AGPUV	-	061 (060.4)	-	5.0	-	+4000	-230	-	RNP APCH
10	IF	NUMEV	-	-	-	-	-	+4000	-230	-	RNP APCH
20	TF	AGPUV	-	241 (240.4)	-	5.0	-	+4000	-230	-	RNP APCH
10	IF	AGPUV	-	-	-	-	-	+4000	-230	-	RNP APCH
20	TF	GK203	-	331 (330.4)	-	5.4	-	@3500	-	-	RNP APCH
30	TF	RW33	Y	331 (330.4)	+1	7.6	-	@1073	-	-3.0/15	RNP APCH
40	CF	GK204	Y	331 (330.4)	-	-	-	-	-230	-	RNP APCH
50	DF	NUMEV	-	-	-	-	R	+4000	-230	-	RNP APCH
10	IF	AGPUV	-	-	-	-	-	+4000	-230	-	RNP APCH
20	HM	AGPUV	-	331 (330.4)	-	-	R	+4000	-230	-	RNP APCH

WAYPOINTS LIST

RNP RWY 33

Waypoint Identifier	Latitude	Longitude
GK203	01°18'09.791"S	012°30'27.145"E
GK204	01°07'07.769"S	012°24'13.773"E
KESUG	01°25'21.779"S	012°28'46.356"E
NUMEV	01°20'24.099"S	012°37'27.351"E
AGPUV	01°22'52.943"S	012°33'06.858"E
RW33	01°11'29.953"S	012°26'41.634"E

NEW EDITION