

Phone : +(242) 05 377 95 54
+(242) 05 377 95 64
AFTN : FCCCNYX
E-mail : bnibrazza@yahoo.fr
aim-fccc@asecna.org
Web : https://aim.asecna.aero



**BUREAU NOTAM INTERNATIONAL
DE L'AFRIQUE CENTRALE**

B.P. 660 BRAZZAVILLE - CONGO

CAMEROUN – CENTRAFRIQUE – CONGO – GABON – GUINEE ÉQUATORIALE – SAO TOME – TCHAD

AIRAC AIP SUP

NR 24/B/26FC

16 APR 2026

BAMENDA - FKKV

NOUVELLES PROCEDURES DE VOL IFR *NEW IFR FLIGHT PROCEDURES*

Effective date	11 JUN 2026
Validity	PERM

Ce SUP d'AIP informe les usagers sur la publication des nouvelles procédures de vol IFR de l'aérodrome de BAMENDA

This AIP SUP inform users of the publication of new IFR flight procedures at BAMENDA aerodrome

ASECNA AIP INSERT PAGES

03AD2-FKKV-IAC-RNP17
03AD2-FKKV-IAC-RNP17-DATA
03AD2-FKKV-IAC-RNP35
03AD2-FKKV-IAC-RNP35-DATA

***CE SUP AIP COMPORTE 01 PAGE ET 04 ANNEXES /
THIS AIP SUP HAS 01 PAGE AND 04 ANNEXES***

INSTRUMENT APPROACH CHART CATEGORIES A-B-C

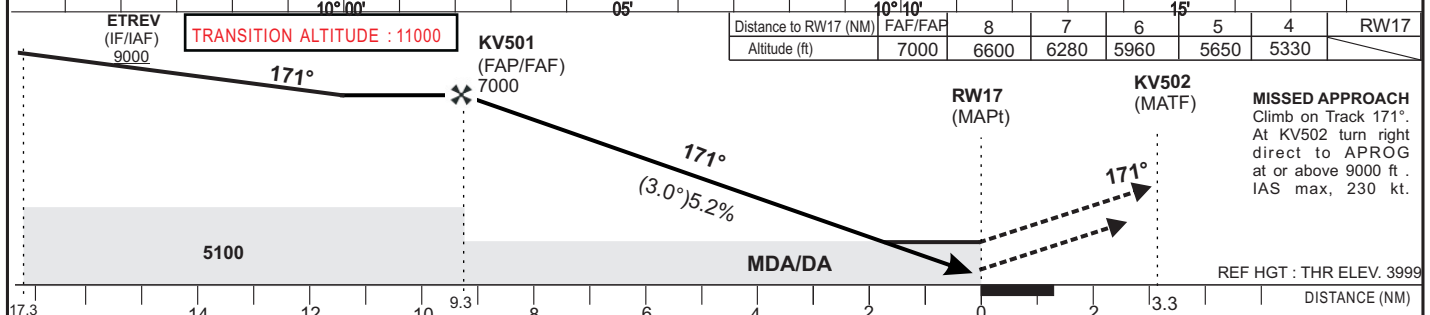
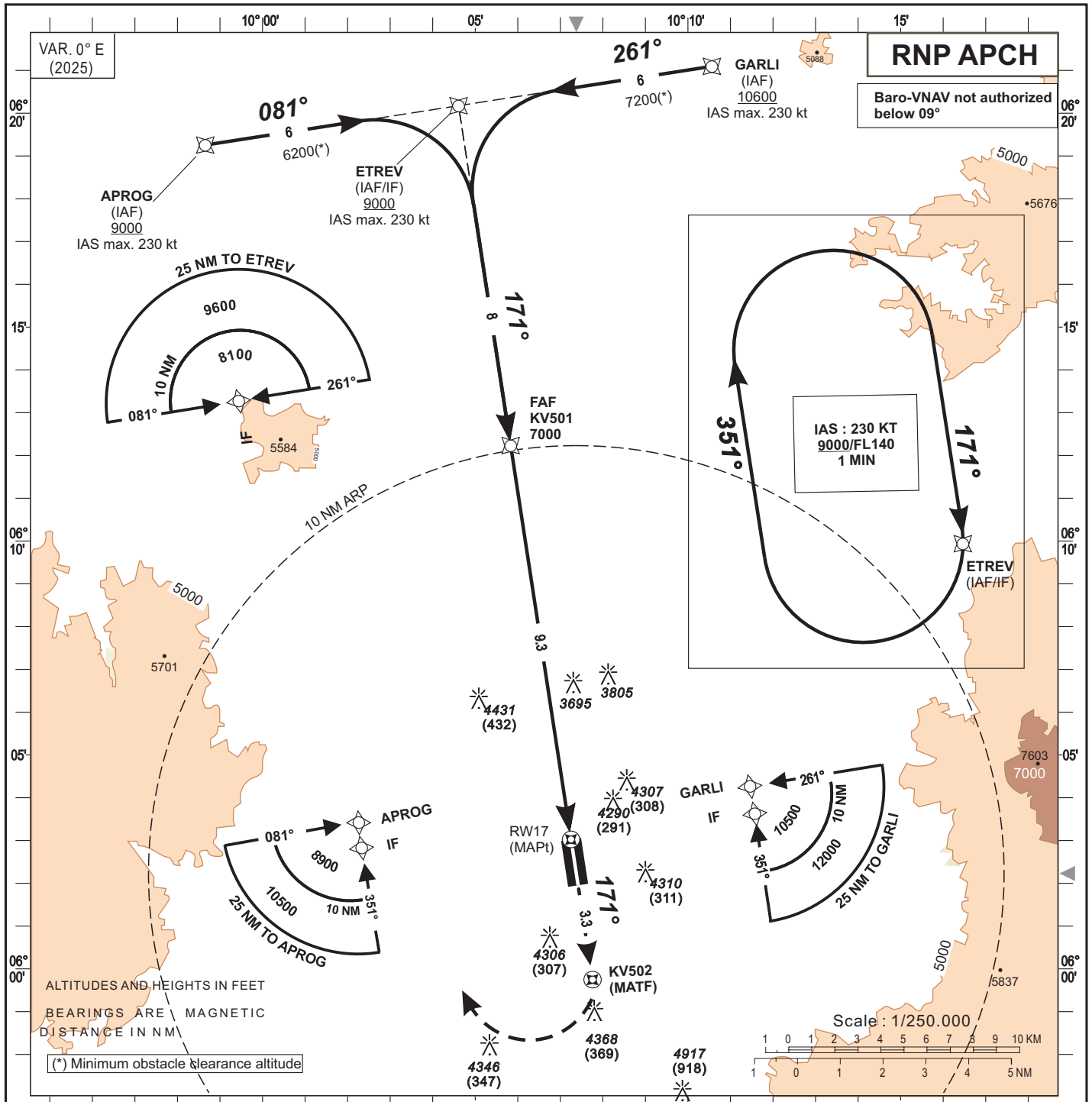
AERODROME ELEV : 4065
THR RWY 17 ELEV : 3999

BAMENDA INFORMATION : 120.875

BAMENDA (FKKV)

HEIGHTS RELATED TO THR RWY 17 ELEVATION

RNP RWY 17



CAT	LNAV/VNAV				LNAV				CIRCLING(2)				Timing FAF / THR 9.3 NM	
	OCA (OCH)	DA	DH	RVR(1)	OCA (OCH)	MDA MDH	RVR(1)	OCA (OCH)	MDA MDH	VIS	KT	MIN SEC	KT	MIN SEC
A	4985 (986)	4990 (990)		1200	5014 (1015)	5020 (1020)	1500	5659 (1594)	5660 (1600)	1500	90	6 Min 12	140	3 Min 59
B	4985 (986)	4990 (990)		1200	5014 (1015)	5020 (1020)	1500	5659 (1594)	5660 (1600)	1600	100	5 Min 35	150	3 Min 43
C	4985 (986)	4990 (990)		1200	5014 (1015)	5020 (1020)	2000	5659 (1594)	5660 (1600)	2400	110	5 Min 04	160	3 Min 29
D											120	4 Min 39	170	3 Min 17
											130	4 Min 18	180	3 Min 06

(1) Without approach lights
(2) OCH and MDH AAL - Daytime only

Minimum temperature: 09°
RVR AND VIS IN METERS

CHANGE: FIRST EDITION

TABULAR DESCRIPTION

RNP RWY 17

Serial Number	Path Descriptor	Waypoint Identifier	Fly-Over	Course °M(°T)	Magnetic Variation	Distance (NM)	Turn Direction	Altitude (ft)	Speed limit (Kt)	VPA/TCH	Navigation Specification
010	IF	GARLI	—	—	—	—	—	+10600	-230	—	RNP APCH
020	TF	ETREV	—	261(261.2)	—	6.0	—	+9000	-230	—	RNP APCH
010	IF	APROG	—	—	—	—	—	+9000	-230	—	RNP APCH
020	TF	ETREV	—	081(081.2)	—	6.0	—	+9000	-230	—	RNP APCH
010	IF	ETREV	—	—	—	—	—	+9000	-230	—	RNP APCH
020	TF	KV501	—	171(171.2)	—	8.0	—	@7000	—	—	RNP APCH
030	TF	RW17	Y	171(171.2)	-0.0	9.3	—	@4049	—	-3.0/15	RNP APCH
040	CF	KV502	Y	171(171.2)	-0.0	3.3	—	—	-230	—	RNP APCH
050	DF	APROG	—	171(171.2)	—	—	R	—	—	—	RNP APCH
010	IF	ETREV	—	—	—	—	—	+9000	-230	—	RNP APCH
020	HM	ETREV	Y	171(171.2)	—	—	R	+9000	-230	—	RNP APCH

WAYPOINTS LIST

RNP RWY 17		
Waypoint Identifier	Coordinates	
GARLI	06°21'05.713"N	010°10'33.783"E
ETREV	06°20'10.548"N	010°04'36.458"E
APROG	06°19'15.314"N	009°58'39.154"E
KV501	06°12'13.884"N	010°05'50.002"E
RW17	06°03'01.530"N	010°07'15.176"E
KV502	05°59'44.902"N	010°07'45.485"E

CHANGE : FIRST EDITION

TABULAR DESCRIPTION

RNP RWY 35

Serial Number	Path Descriptor	Waypoint Identifier	Fly-Over	Course °M(°T)	Magnetic Variation	Distance (NM)	Turn Direction	Altitude (ft)	Speed limit (Kt)	VPA/TCH	Navigation Specification
010	IF	NEPDO	—	—	—	—	—	+11200	-230	—	RNP APCH
020	TF	KEKIS	—	081(081.2)	—	6.0	—	+11200	-230	—	RNP APCH
010	IF	ONUDI	—	—	—	—	—	+11200	-230	—	RNP APCH
020	TF	KEKIS	—	261(261.2)	—	6.0	—	+11200	-230	—	RNP APCH
010	IF	KEKIS	—	—	—	—	—	+11200	-230	—	RNP APCH
020	TF	KV503	—	351(351.2)	—	12.3	—	@8400	—	—	RNP APCH
030	TF	RW35	Y	351(351.2)	-0.0	12.7	—	@4101	—	-3.3/15	RNP APCH
040	CF	KV504	Y	351(351.2)	-0.0	7.0	—	—	-230	—	RNP APCH
050	DF	NEPDO	—	351(351.2)	—	—	L	—	—	—	RNP APCH
010	IF	ONUDI	—	—	—	—	—	+11200	-230	—	RNP APCH
020	HM	ONUDI	Y	351(351.2)	—	—	R	+11200	-230	—	RNP APCH

WAYPOINTS LIST

RNP RWY 35		
Waypoint Identifier	Coordinates	
NEPDO	05°36'12.316"N	010°05'17.699"E
KEKIS	05°37'07.474"N	010°11'14.550"E
ONUDI	05°38'02.572"N	010°17'11.420"E
KV503	05°49'45.986"N	010°09'17.762"E
RW35	06°01'57.196"N	010°07'25.093"E
KV504	06°08'54.283"N	010°06'20.788"E

CHANGE: FIRST EDITION