

Phone : +(242) 05 377 95 54
 +(242) 05 377 95 64
 Fax : NIL
 AFTN : FCCCNYX
 E-mail : bnibrazza@yahoo.fr:
 aim-fccc@asecna.org
 Web : https://aim.asecna.aero



**BUREAU NOTAM INTERNATIONAL
 DE L'AFRIQUE CENTRALE**
 B.P. 660 BRAZZAVILLE - CONGO

**AIRAC AIP SUP
 NR 45/A/24FC
 06 AUG 2024**

CAMEROUN – CENTRAFRIQUE – CONGO – GABON – GUINEE ÉQUATORIALE – SAO TOME – TCHAD

PORT-GENTIL- FOOG

MISE A JOUR DES INFORMATIONS AÉRONAUTIQUES UPDATE OF AERONAUTICAL INFORMATION

<i>Effective date</i>	03 OCT 2024
<i>Validity</i>	PERM

Ce Supplément d'AIP AIRAC a pour objet d'informer les usagers sur la mise à jour des sous-sections AD2 de l'AIP ASECNA concernant l'aérodromes de PORT-GENTIL

The purpose of this AIRAC AIP Supplement is to inform users on the update of the sub-sections AD2 of ASECNA AIP concerning PORT-GENTIL aerodrome.

FOOG—AD 2.8 AIRES DE TRAFIC, VOIES DE CIRCULATION ET EMPLACEMENTS DE VÉRIFICATION APRONS, TAXIWAYS AND CHECK LOCATIONS

1	Surface de l'aire de trafic <i>Apron surface</i>	AIRES HELICOPTERES : Béton bitumineux / Asphaltic concrete AST AVIATION LEGERE (AL) : Béton bitumineux / Asphaltic concrete AST NORD : Béton bitumineux / Asphaltic concrete AST SUD : Béton bitumineux / Asphaltic concrete
	Résistance de l'aire de trafic <i>Apron strength</i>	AIRES HELICOPTERES : 10 TN (3 aires à 172.5 M du seuil-03 seuil 02- QDR 180°: 75 X15 M - 35 X 15 M - 32.5 X 15 M) AST AVIATION LEGERE (AL) : (1200 M2) 35 TN AST NORD : (12 640 M2) B777-200 AST SUD : (14 280 M2) B777-200
2	Largeur des voies de circulation <i>TWY width</i>	TWY A : 30 M TWY B : 25 M TWY HEL UNK TWY C:8.5 M TWY THR03 : 23 M TWY D : 23 M
	Surface des voies de circulation <i>TWY surface</i>	TWY A : Béton bitumineux / Asphaltic concrete TWY B : Béton bitumineux / Asphaltic concrete TWY HEL UNK TWY C: Béton bitumineux / Asphaltic concrete TWY THR03 TWY D : Béton bitumineux Asphaltic concrete
	Résistance des voies de circulation <i>TWY strength</i>	TWY A : PCN 23/F/B/W/T TWY B : PCN 23/F/B/W/T TWY HEL UNK TWY C: PCN 23/F/B/W/T TWY THR03 TWY D : PCN 40/F/B/W/T

**FOOG — AD 2.12 CARACTÉRISTIQUES PHYSIQUES DES PISTES /
RUNWAY PHYSICAL CHARACTERISTICS**

Numéro de piste RWY NR	Relèvements VRAI et MAG <i>True and Mag Bearing</i>	Dimensions des RWY (M) <i>Dimensions of RWY (M)</i>	Résistance (PCN) et revêtement des RWY et SWY <i>Strength (PCN) and surface of RWY and SWY</i>	Coordonnées du seuil <i>Threshold THR Coordinates</i>	Altitude du seuil et du point le plus élevé de la TDZ <i>THR elevation and highest elevation of TDZ of precision RWY</i>
1	2	3	4	5	6
03 02	022.30° VRAI 024° MAG	2600 x 45	40 / F / B / W / T Béton bitumineux / Asphaltic concrete	00°43'32.27"S 008°44'55.50"E ----- GUND NIL	THR : 4M / 13.1FT
24 20	202.30° VRAI 204° MAG	2600 x 45	40 / F / B / W / T Béton bitumineux / Asphaltic concrete	00°42'13.96"S 008°45'27.47"E ----- GUND NIL	THR : 3M / 9.8FT TDZ : 4M / 13.1FT

FOOG — AD 2.13 DISTANCES DÉCLARÉES / DECLARED DISTANCES

Désignation de la piste RWY NR	TORA (M)	TODA (M)	ASDA (M)	LDA (M)	Observations <i>Remarks</i>
1	2	3	4	5	6
03 02	2600	2600	2660	2600	PA = 60 M SWY = 60 M
24 20	2600	2600	2660	2600	PA = 60 M SWY = 60 M

**FOOG — AD 2.14 DISPOSITIF LUMINEUX D'APPROCHE ET BALISAGE LUMINEUX DE
PISTE
APPROACH AND RUNWAY LIGHTING**

Désignation de la piste RWY Designator	Type et intensité du balisage lumineux d'approche <i>Approach lighting type, length intensity</i>	Couleur des feux de seuil et barres <i>THR Lights colour wing bar lights WBAR</i>	PAPI Position/Pente <i>Location/Slope MEHT (FT)</i>	Zone de toucher des roues TDZ, LGT, length
1	2	3	4	5
03 02	- RTILS	Vert / Green LIH/LIL	Gauche / Left 3°	Néant Balisage diurne
24 20	- 420 M - LIH/LIL unidirectionnelle balle traçante + RTILS	Vert / Green LIH/LIL	Gauche / Left 3°	Néant Balisage diurne

**FOOG — AD 2.15 AUTRES DISPOSITIFS LUMINEUX, ALIMENTATION AUXILIAIRE
OTHER LIGHTING, SECONDARY POWER SUPPLY**

2	Emplacement et éclairage de l'anémomètre/ <i>Anemometer location and lighting</i> Indicateur de sens d'atterrissage <i>LDI location and lighting</i>	NIL 1 manche à air lumineuse à 315 M du seuil 03 seuil 02 1 manche à air lumineuse à 300 M du seuil 24 seuil 20 1 manche à air lumineuse entre TWY A et TWY B	1 lighted windsock at 315 M from THR03 THR02 1 lighted windsock at 300 M from THR24 THR20 1 lighted windsock between TWY A and TWY B
---	---	--	---

**FOOG — AD 2.19 AIDES DE RADIONAVIGATION ET D'ATERRISSAGE /
RADIO NAVIGATION AND LANDING AIDS**

Type d'Aide/Déclinaison Type of Aid/Magnetic Variation	Identification Identification	Fréquences (MHZ-KHZ) Frequency	Heures de fonctionnement Hours of operation	Coordonnées antenne émission Site of antenna coordinates	Altitude de l'antenne Elevation of DME antenna	Observations Remarks
1	2	3	4	5	6	7
DVOR/DME 2°W (2020)	PG	112.3 MHz Ch 70X	H24	00°43'43.60"S 008°44'50.90"E	9M (30FT)	P. DVOR : 100 W P. DME : 1KW 376 M seuil 03 seuil 02 QDR 203°
ILS/GP 21 ILS/GP 20 2°W (2020)	PO	331.4 MHz	H24	00°42'24.30"S 008°45'27.20"E	15M (49FT)	P : 100 W 296,9 M seuil 21 seuil 20 QDR 025° CAT. II jusqu'au seuil de piste
ILS/LOC 21 ILS/LOC 20 CAT. II 2°W (2020)	PO	109.1 MHz	H24	00°43'40.90"S 008°44'51.84"E	7M (23FT)	300 M seuil 03 seuil 02 QDR 024°

**ENR 4.1 AIDES DE RADIO NAVIGATION DE ROUTE /
RADIO NAVIGATION AIDS - EN-ROUTE**

NOM et TYPE de la Station/Déclinaison Name of station Magnetic Variation	IDENTIFICATION ID	FRÉQUENCE (MHZ-KHZ) Frequency	HEURES DE SERVICE Hours of Operation	COORDONNÉES Coordinates	ALTITUDE DE L'ANTENNE Antenna elevation	OBSERVATIONS Remarks
1	2	3	4	5	6	7
PORT GENTIL DVOR-DME 2°W (2020)	PG	112.3 MHz Ch 70X	H24	00°43'43.60"S 008°44'50.90"E	9M (30FT)	P. DVOR : 100 W P. DME : 1KW 376 M seuil 03 seuil 02 QDR 203°

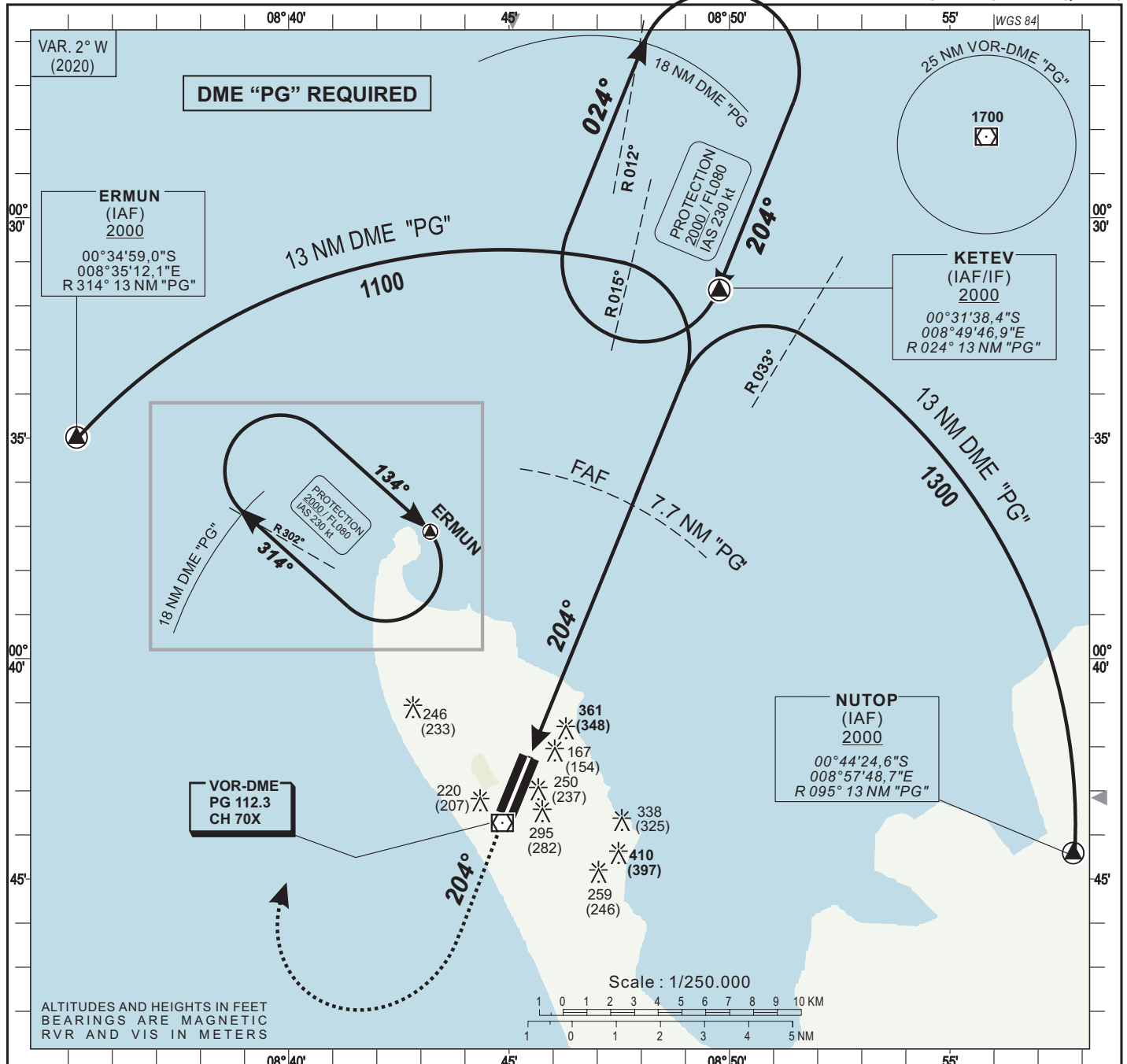
ASECNA AIP MODIFY PAGE

- 07AD-2. FOOG-4;
- 07AD-2. FOOG -7;
- 07AD-2. FOOG-8;
- 07AD-2. FOOG-10;
- 07 ENR4-1-1

CE SUP AIP COMPORTE 3 PAGES ET 11 ANNEXES /

THIS AIP SUP HAS 3 PAGES AND 11 APPENDICES

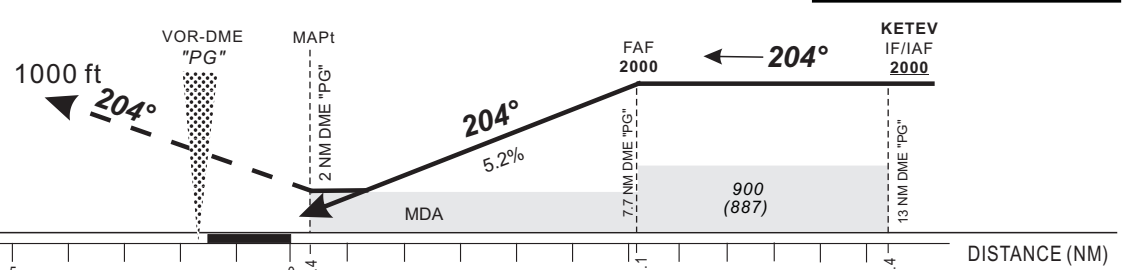
HEIGHTS RELATED TO AERODROME ELEVATION



Distance to DME « PG » (NM)	RWY 20	4	5	6	7	FAF
Altitude (ft)		830	1145	1465	1780	2000

TRANSITION ALTITUDE : 3 100

Missed approach: Climb up to 1000 ft on R 204, then turn right climbing to 2000 ft, join KETEV via R012 or as instructed by ATC.
Do not turn before MAPt.



CAT	VOR-DME				Circling (*)				Timing	FAF / THR 6.1 NM
	OCA (OCH)	MDA MDH	RVR(1)	RVR(2)	OCA (OCH)	MDA MDH	VIS			
A	607 (594)	610 (600)	1400	1500	657 (644)	660 (650)	1500	90 4 Min 04	140 2 Min 37	
B	607 (594)	610 (600)	1500	1500	657 (644)	660 (650)	1600	100 3 Min 40	150 2 Min 26	
C	607 (594)	610 (600)	1600	2000	804 (791)	810 (800)	2400	110 3 Min 20	160 2 Min 17	
								120 3 Min 03		
								130 2 Min 49		

Notes :
(1) With approach lighting
(2) Without approach lighting
(*) Daytime only. OCH and MDH AAL

: NEW EDITION
AMDT

**INSTRUMENT
APPROACH
CHART-ICAO**

AERODROME ELEV : 13
THR RWY 02 ELEV : 13

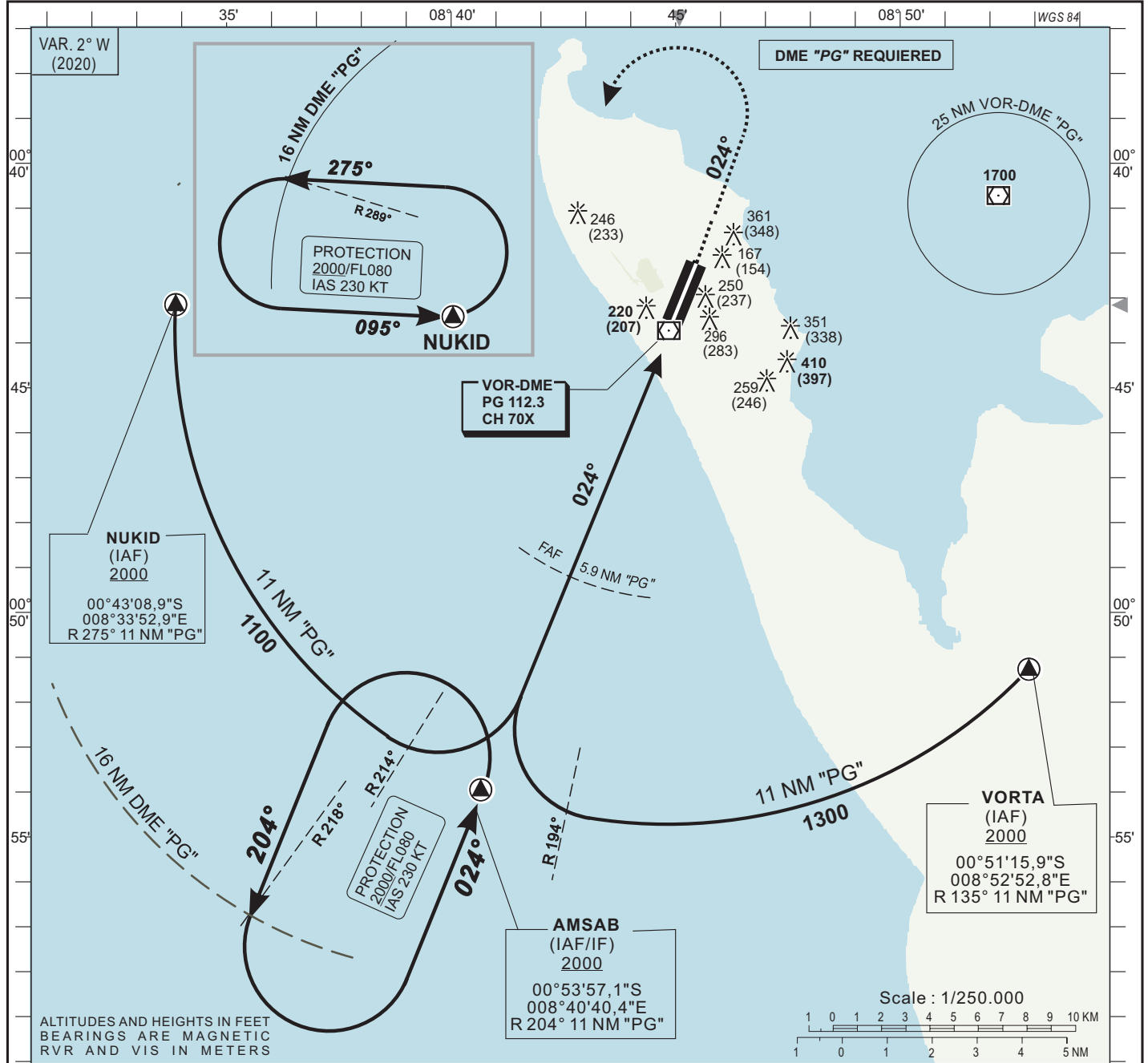
APP : Port-Gentil Tower on 118.3
TWR: Port-Gentil Tower on 118.3

Port-Gentil (FOOG)

VOR Z RWY 02

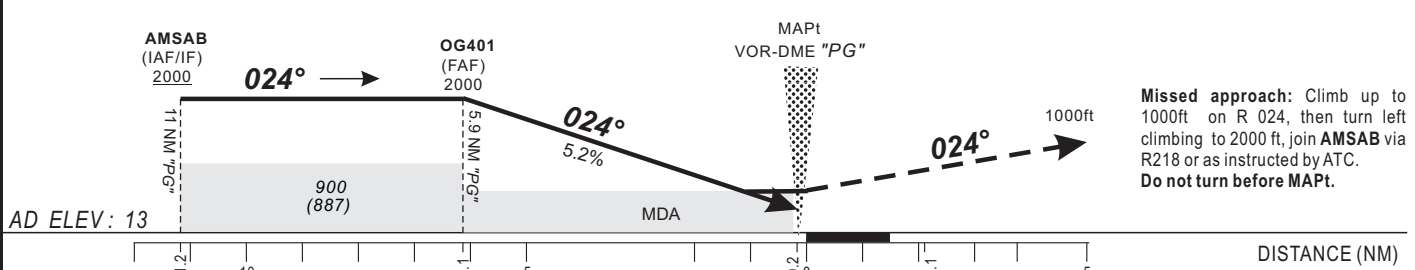
HEIGHTS RELATED TO AERODROME ELEVATION

IDENT VOR « PG » FREQ 112.3



Distance to DME « PG » (NM)	FAF	5	4	3	2	1	RWY02
Altitude (ft)	2 000	1720	1400	1080	765	445	

TRANSITION ALTITUDE : 3 100

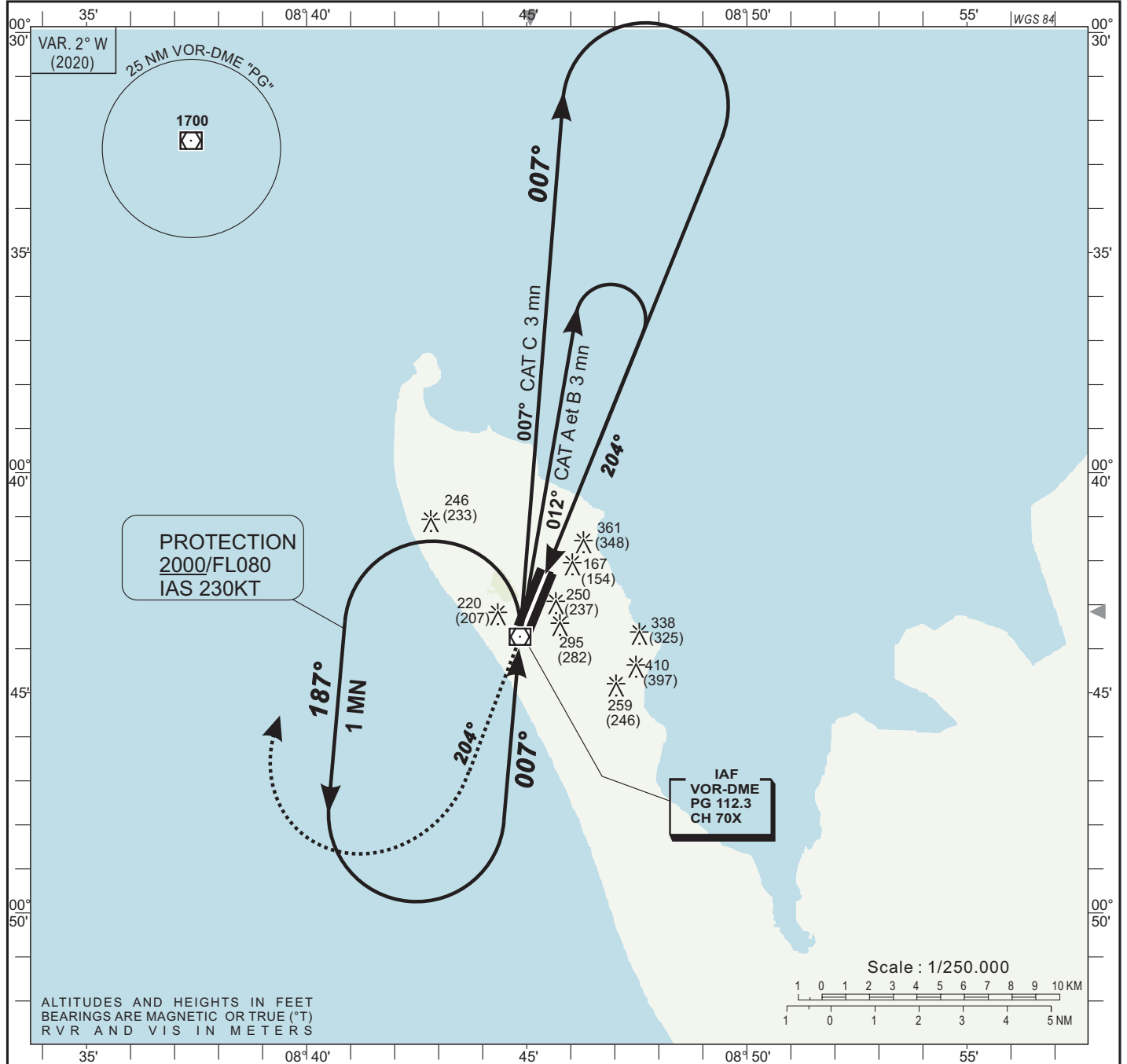


CAT	VOR-DME				Circling (*)				VIS
	OCA (OCH)	MDA	MDH	RVR	OCA (OCH)	MDA	MDH	MDH	
A	405 (392)	410 (400)	1500	657 (644)	660 (650)	1500			
B	405 (392)	410 (400)	1500	657 (644)	660 (650)	1600			
C	405 (392)	410 (400)	1800	804 (791)	810 (800)	2400			
D									

KT	FAF / THR		KT	THR	
	MIN	SEC		MIN	SEC
90	4	04	140	2	37
100	3	40	150	2	26
110	3	20	160	2	17
120	3	03			
130	2	49			

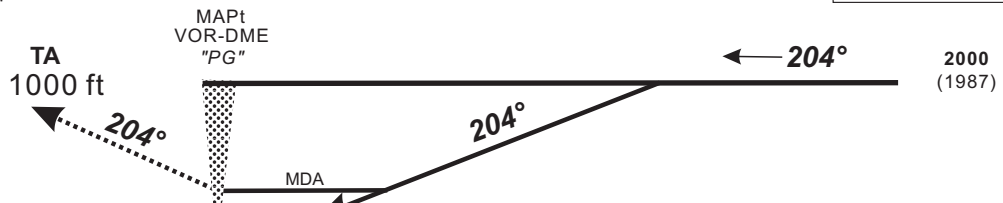
Notes : (*) Daytime only. OCH and MDH AAL

AMDT : NEW EDITION



Missed approach: Climb up to 1000 ft on R 204, then turn right climbing to 2000 ft, join VOR "PG" or as instructed by ATC.
Do not turn before MAPt.

TRANSITION ALTITUDE : 3 100



AERODROME ELEV : 13

THR RWY 20 | 5 0 5 10 | DISTANCE (NM)

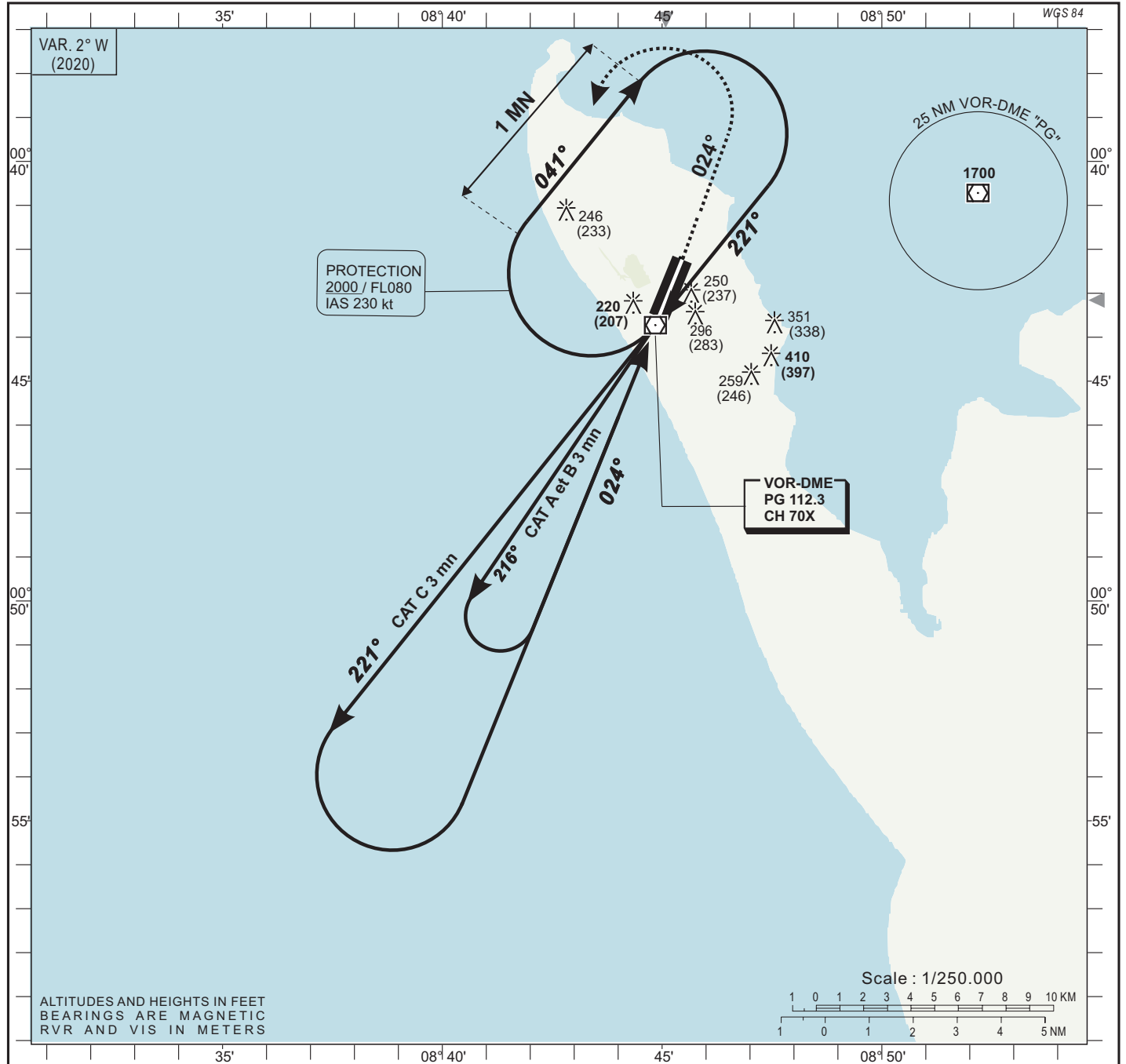
NEW EDITION

CAT	VOR				Circling (*)				Timing FAF / THR
	OCA (OCH)	MDA MDH	RVR(1)	RVR(2)	OCA (OCH)	MDA MDH	VIS		
A	657 (644)	660 (650)	1500	1500	657 (644)	660 (650)	1500		
B	657 (644)	660 (650)	1500	1500	657 (644)	660 (650)	1600		
C	657 (644)	660 (650)	1800	2000	804 (791)	810 (800)	2400		

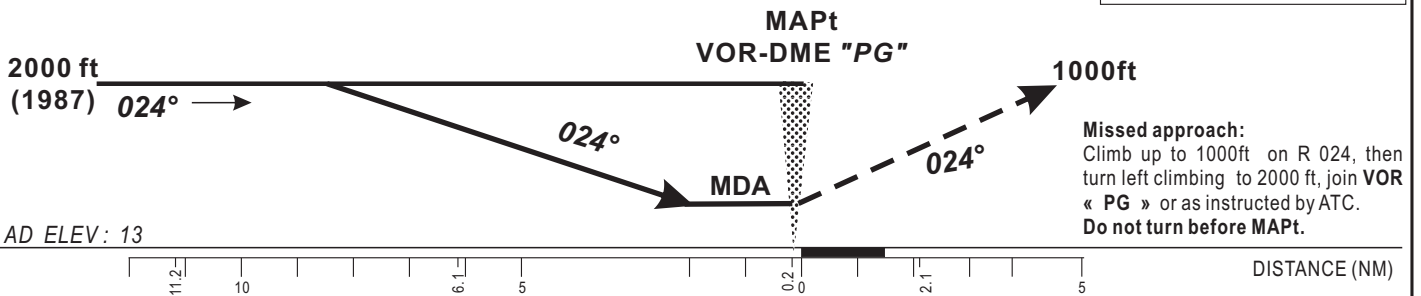
AMD T:

Notes : (1) With approach lighting
(2) Without approach lighting
(*) Daytime only. OCH and MDH AAL

KT	MIN	SEC	KT	MIN	SEC
90			140		
100			150		
110			160		
120			170		
130			180		



TRANSITION ALTITUDE : 3 100



CAT	VOR				Circling (*)				VIS	Timing
	OCA (OCH)	MDA	MDH	RVR	OCA (OCH)	MDA	MDH	VIS		
A	444 (431)	450 (440)	1500	657 (644)	660 (650)	1500				
B	444 (431)	450 (440)	1500	657 (644)	660 (650)	1600				
C	444 (431)	450 (440)	1800	804 (791)	810 (800)	2400				

KT	MIN	SEC	KT	MIN	SEC
90			140		
100			150		
110			160		
120					
130					

Notes : (*) Daytime only. OCH and MDH AAL

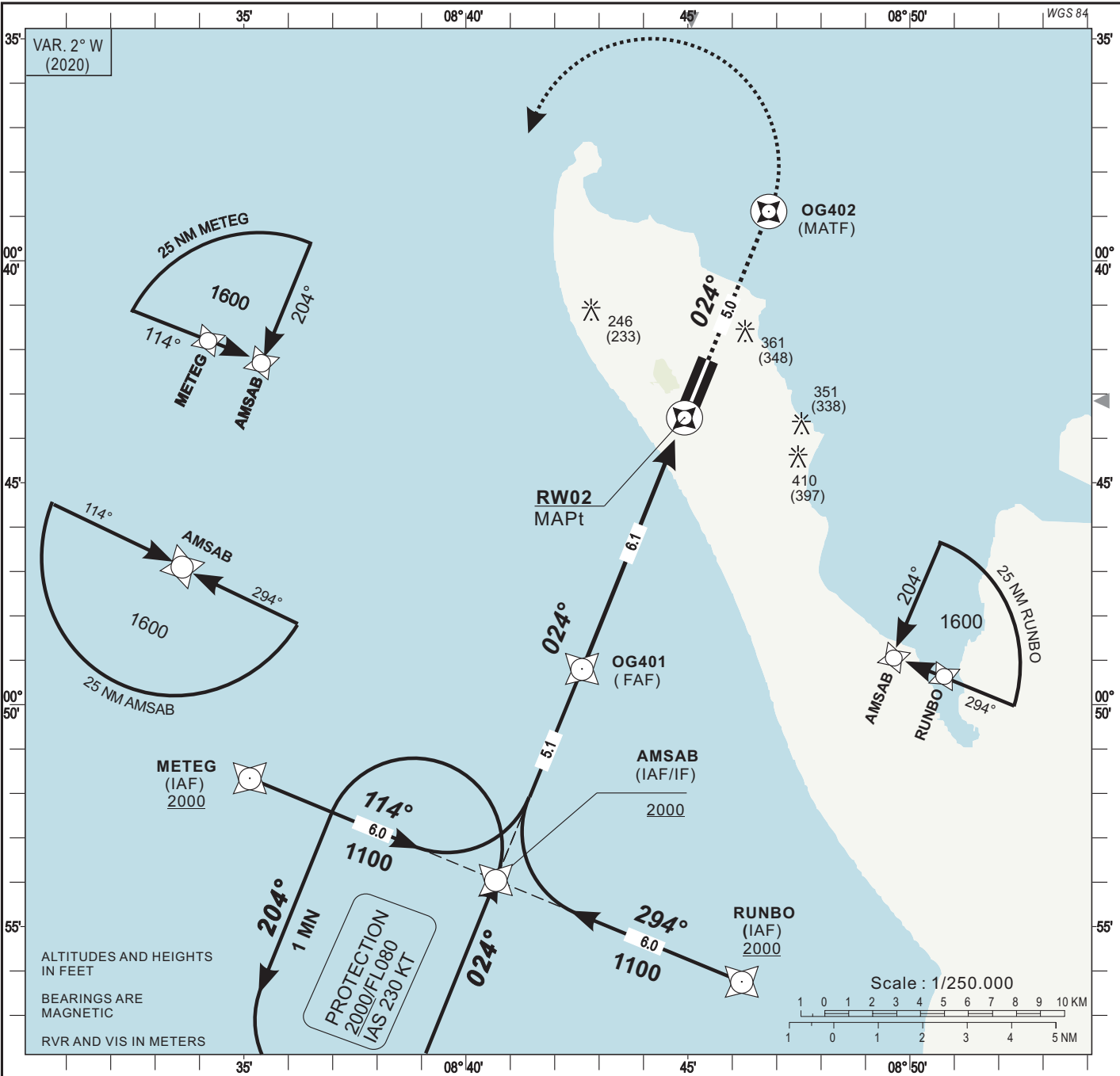
AMDT

INSTRUMENT
APPROACH
CHART-ICAO

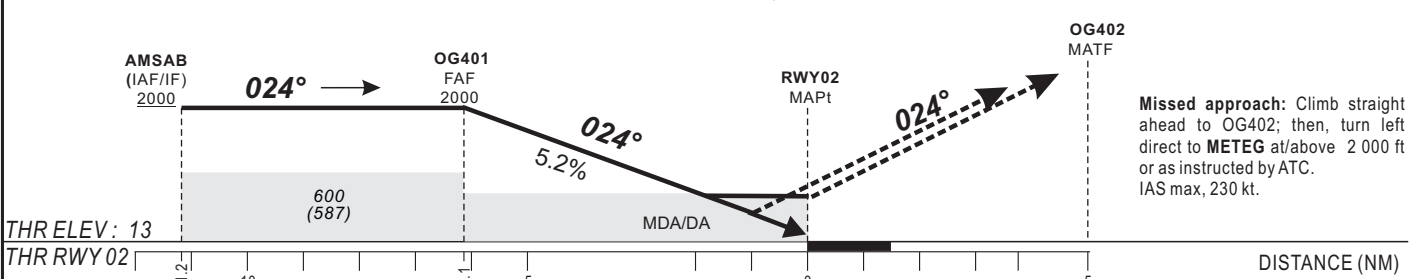
AERODROME ELEV : 13
THR RWY 02 ELEV : 13
HEIGHTS RELATED TO THRESHOLD 02 ELEVATION

APP : Port-Gentil Tower on 118.3
TWR: Port-Gentil Tower on 118.3

Port-Gentil (FOOG)
RNP RWY 02
(ACFT CAT A-B-C)



Distance to THR 02 (NM)	FAF	6	5	4	3	2	RWY 02
Altitude (ft)	2000	1975	1655	1335	1020	700	



NEW EDITION	CAT	LNAV/VNAV			LNAV			Circling (*)				Timing
		OCA (OCH)	DA	DH	RVR	OCA (OCH)	MDA	MDH	RVR	OCA (OCH)	MDA	
A		323 (310)	330 (310)		1200	440 (427)	440 (430)	1500	657 (644)	660 (650)	1500	
B		336 (323)	340 (330)		1200	440 (427)	440 (430)	1500	657 (644)	660 (650)	1600	
C		354 (341)	360 (350)		1200	440 (427)	440 (430)	1800	804 (791)	810 (800)	2400	
D												

Notes : (*) Daytime only. OCH and MDH AAL

RDH: 15 m

Timing		FAF / THR	
		6.1 NM	
KT	MIN SEC	KT	MIN SEC
90	4 Min 04	140	2 Min 37
100	3 Min 40	150	2 Min 26
110	3 Min 20	160	2 Min 17
120	3 Min 03		
130	2 Min 49		

TABULAR DESCRIPTION

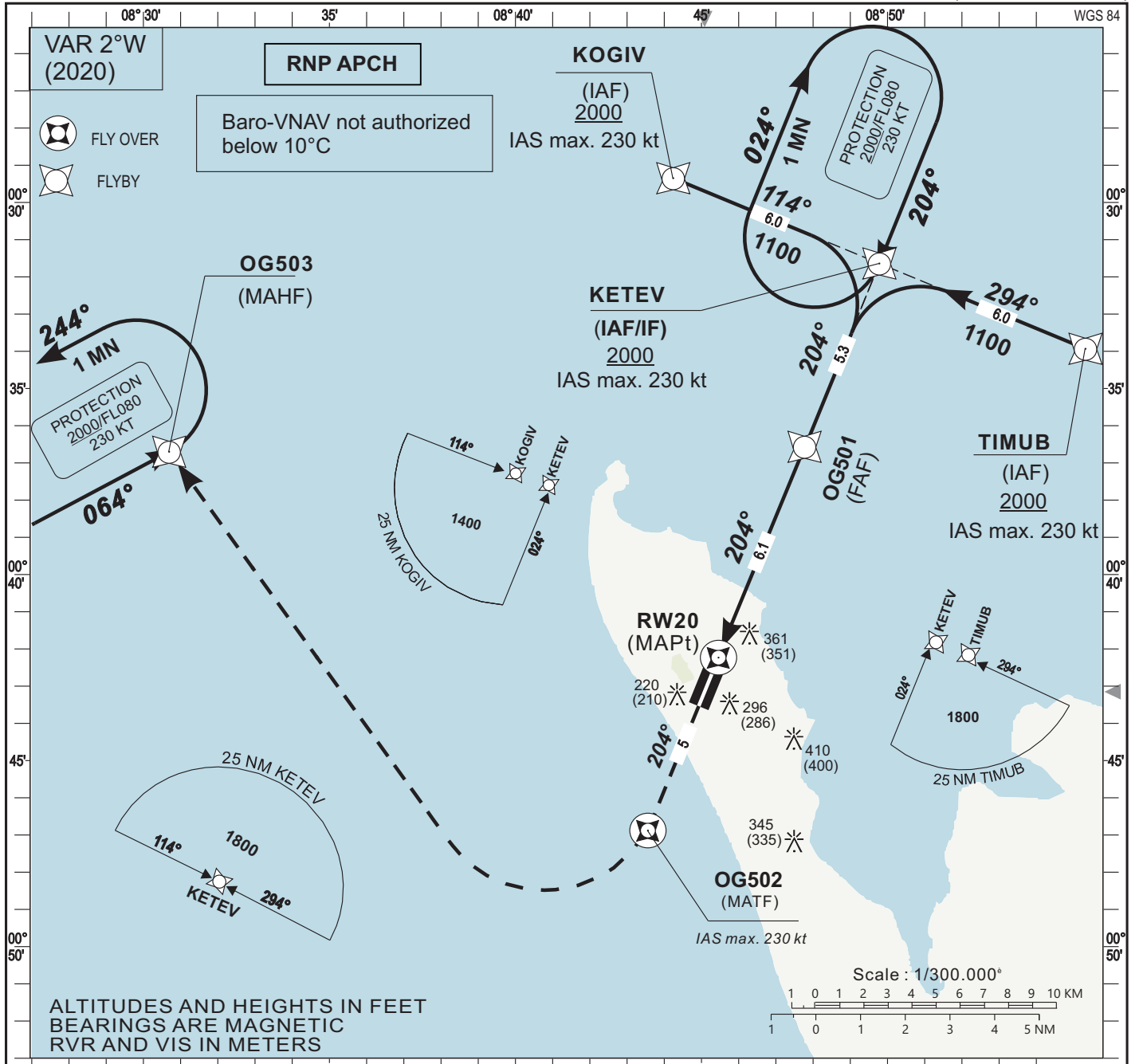
RNP RWY 02											
Serial Number	Path Descriptor	Waypoint Identifier	Fly-Over	Course °M(°T)	Magnetic Variation	Distance (NM)	Turn Direction	Altitude (ft)	Speed limit (Kt)	VPA/TCH (°/m)	Navigation Specification
10	IF	METEG	-	-		-	-	+2000	-230	-	RNP APCH
20	TF	AMSAB	-	114(112.3)		6.0	-	+2000	-230	-	RNP APCH
10	IF	RUNBO	-			-	-	+2000	-230	-	RNP APCH
20	TF	AMSAB	-	294(292.3)		6.0		+2000	-230	-	RNP APCH
10	IF	AMSAB	-	-		-	-	+2000	-230	-	RNP APCH
20	TF	OG401	-	24(22.3)		5.1	-	@2000	-	-	RNP APCH
30	TF	RW02	Y	24(22.3)	+2	6.1	-	@63	-	-3.0/15	RNP APCH
40	CF	OG402	Y	24(22.3)		5.0	-	-	-230	-	RNP APCH
50	DF	METEG	-	-		-	L	+2000	-230	-	RNP APCH
10	IF	AMSAB	-	-		-	-	+2000	-230	-	RNP APCH
20	HM	AMSAB	-	24(22.3)		-	L	+2000	-230	-	RNP APCH

WAYPOINTS LIST

RNP RWY 02

Waypoint Identifier	Coordinates	
OG401	00°49'11.699"S	008°42'36.924"E
OG402	00°38'53.419"S	008°46'49.339"E
METEG	00°51'39.530"S	008°35'08.002"E
AMSAB	00°53'57.059"S	008°40'40.418"E
RUNBO	00°56'14.579"S	008°46'12.840"E
RW02	00°43'32.270"S	008°44'55.500"E

AMDT : NEW EDITION

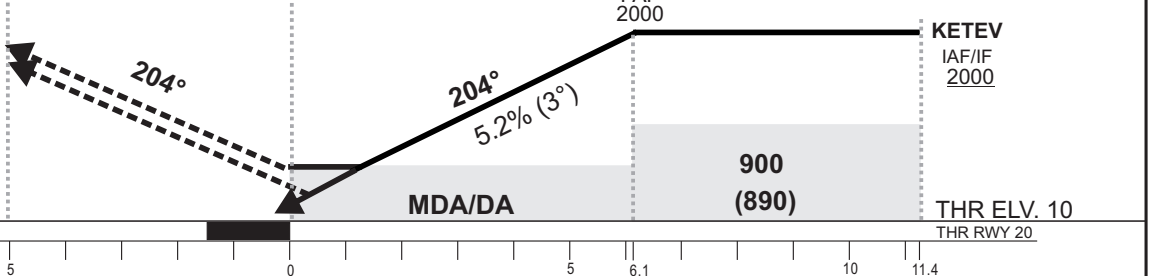


Distance to RWY20 (NM)	RW20	2	3	4	5	6	FAF
Altitude (ft)		700	1015	1330	1650	1970	2000

TRANSITION ALTITUDE : 3100

MISSED APPROACH

Climb on Track 204°. At OG502, turn right direct to OG503 at/above 2 000 ft or as instructed by ATC. IAS max, 230 kt



CAT	LNAV/VNAV				LNAV					CIRCLING (*)				Timing FAF/THR 6.1 NM
	OCA (OCH)	DA	DH	RVR	OCA (OCH)	MDA	MDH	RVR(1)	RVR(2)	OCA (OCH)	MDA	MDH	VIS	
A	478 (468)	480 (470)	1200		607 (597)	610 (600)	1400	1500		657 (644)	660 (650)	1500		KT MIN SEC KT MIN SEC 90 4 Min 04 140 2 Min 37 100 3 Min 40 150 2 Min 26 110 3 Min 20 160 2 Min 17 120 3 Min 03 130 2 Min 49
B	490 (480)	490 (480)	1200		607 (597)	610 (600)	1500	1500		657 (644)	660 (650)	1600		
C	497 (487)	500 (490)	1200		607 (597)	610 (600)	1600	2000		804 (791)	810 (800)	2400		

Notes: (1) With approach light
(2) Without approach light
(*) Day time only. OCH and MDH AAL.

RDH: 15 m

NEW EDITION
AMDT

TABULAR DESCRIPTION											
RNP RWY 20											
Serial Number	Path Descriptor	Waypoint Identifier	Fly-Over	Course °M(°T)	Magnetic Variation	Distance (NM)	Turn Direction	Altitude (ft)	Speed limit (Kt)	VPA/TCH (°/m)	Navigation Specification
10	IF	KOGIV	-	-		-	-	+2000	-230	-	RNP APCH
20	TF	KETEV	-	114 (112.3)		6.0	-	+2000	-230	-	RNP APCH
10	IF	TIMUB	-	-		-	-	+2000	-230	-	RNP APCH
20	TF	KETEV	-	294 (292.3)		6.0		+2000	-230	-	RNP APCH
10	IF	KETEV	-	-		-	-	+2000	-230	-	RNP APCH
20	TF	OG501	-	204 (202.3)		5.3	-	@2000	-	-	RNP APCH
30	TF	RW20	Y	204 (202.3)	+2	6.1	-	@60	-	-3.0/15	RNP APCH
40	CF	OG502	Y	204 (202.3)		5.0	-	-	-230	-	RNP APCH
50	DF	OG503	-	-		-	R	+2000	-230	-	RNP APCH
10	IF	KETEV	-	-		-	-	+2000	-230	-	RNP APCH
20	HM	KETEV	-	204 (202.3)		-	R	+2000	-230	-	RNP APCH
10	IF	OG503	-	-		-	-	+2000	-230	-	RNP APCH
20	HM	OG503	-	64 (061.7)		-	L	+2000	-230	-	RNP APCH

WAYPOINTS LIST		
RNP RWY 20		
Waypoint Identifier	Coordinates	
OG501	00°36'34.004"S	008°47'46.253"E
OG502	00°46'52.810"S	008°43'33.628"E
KOGIV	00°29'20.905"S	008°44'14.522"E
KETEV	00°31'38.421"S	008°49'46.917"E
TIMUB	00°33'55.932"S	008°55'19.316"E
OG503	00°36'42.031"S	008°30'41.543"E
RW20	00°42'13.960"S	008°45'27.470"E

: NEW EDITION

AMDT

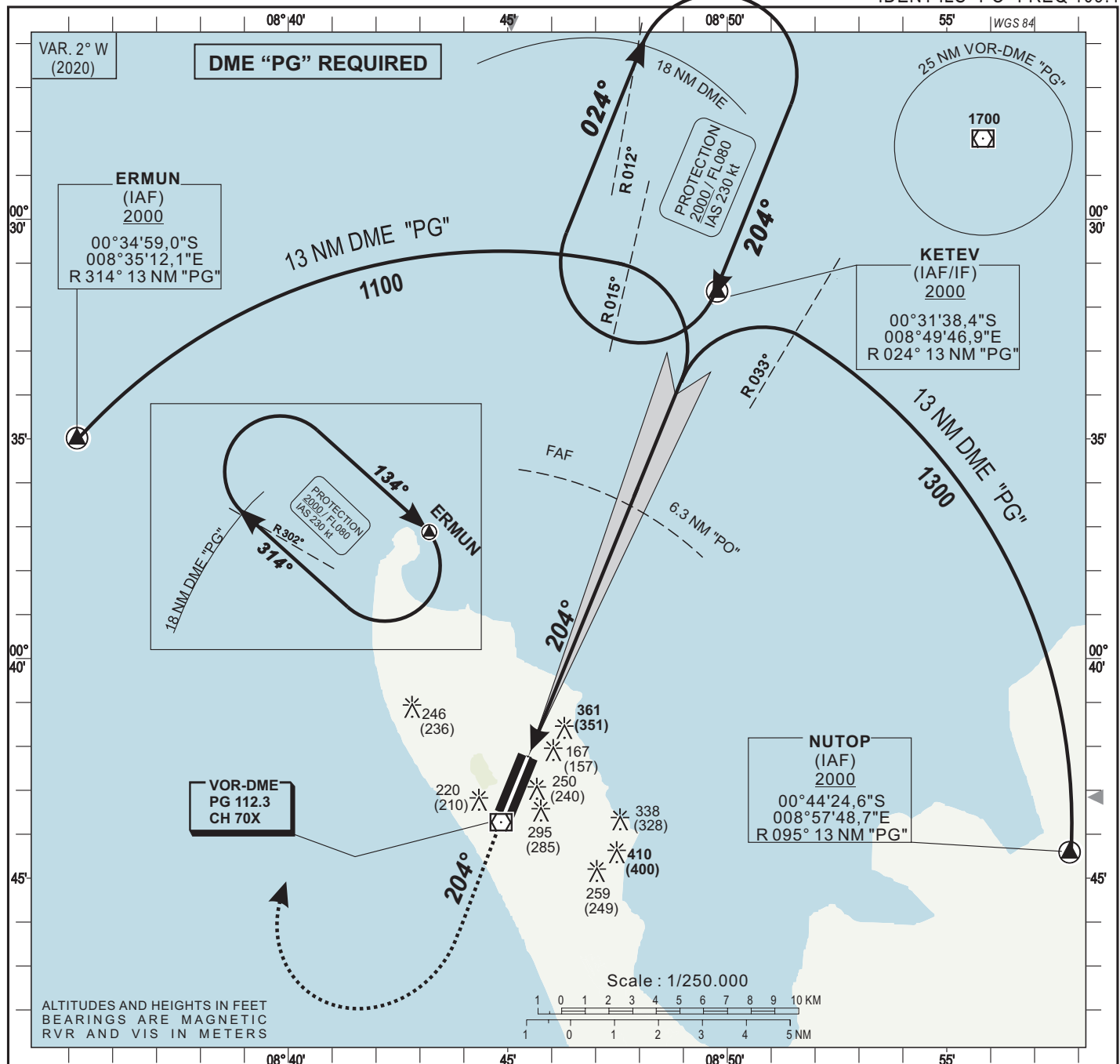
INSTRUMENT
APPROACH
CHART-ICAO

AERODROME ELEV :13
THR RWY 20 ELEV : 10

APP : Port Gentil Tower on 118.3
TWR : Port Gentil Tower on 118.3

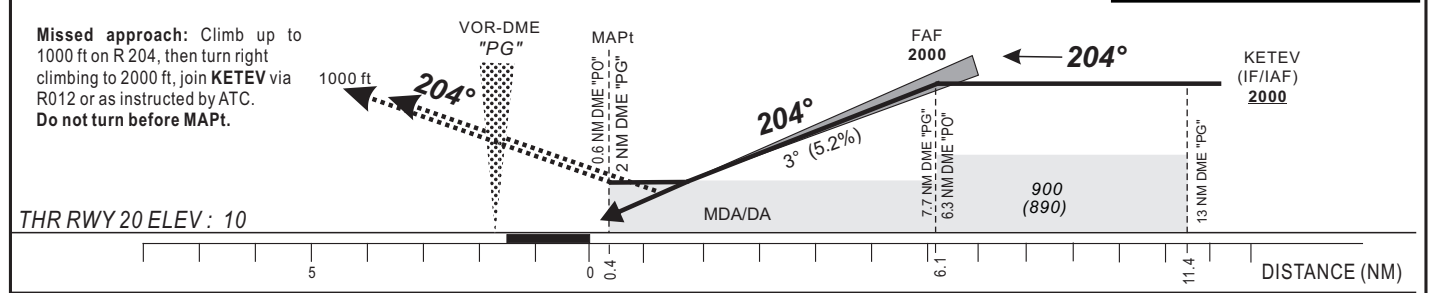
Port-Gentil (FOOG)
ILS Z or LOC Z RWY 20
IDENT ILS "PO" FREQ 109.1

HEIGHTS RELATED TO THR RWY 20 ELEVATION



Distance to DME « PO » (NM)	RWY 20	2	3	4	5	6	FAF
Altitude (ft)		630	950	1270	1590	1905	2000

TRANSITION ALTITUDE : 3 100



CAT	CAT I				LOC-DME				Circling (*)				Timing
	OCA (OCH)	DA	DH	RVR(1) RVR(2)	OCA (OCH)	MDA MDH	RVR(1) RVR(2)	OCA (OCH)	MDA MDH	VIS			
A	227 (217)	230 (220)		700 1000	444 (434)	450 (440)	1200 1500	657 (644)	660 (650)	1500	Timing FAF / THR 6.1 NM 90 4 Min 04 140 2 Min 37 100 3 Min 40 150 2 Min 26 110 3 Min 20 160 2 Min 17 120 3 Min 03 130 2 Min 49		
B	236 (226)	240 (230)		700 1000	444 (434)	450 (440)	1300 1500	657 (644)	660 (650)	1600			
C	246 (236)	250 (240)		700 1000	444 (434)	450 (440)	1400 1800	804 (791)	810 (800)	2400			

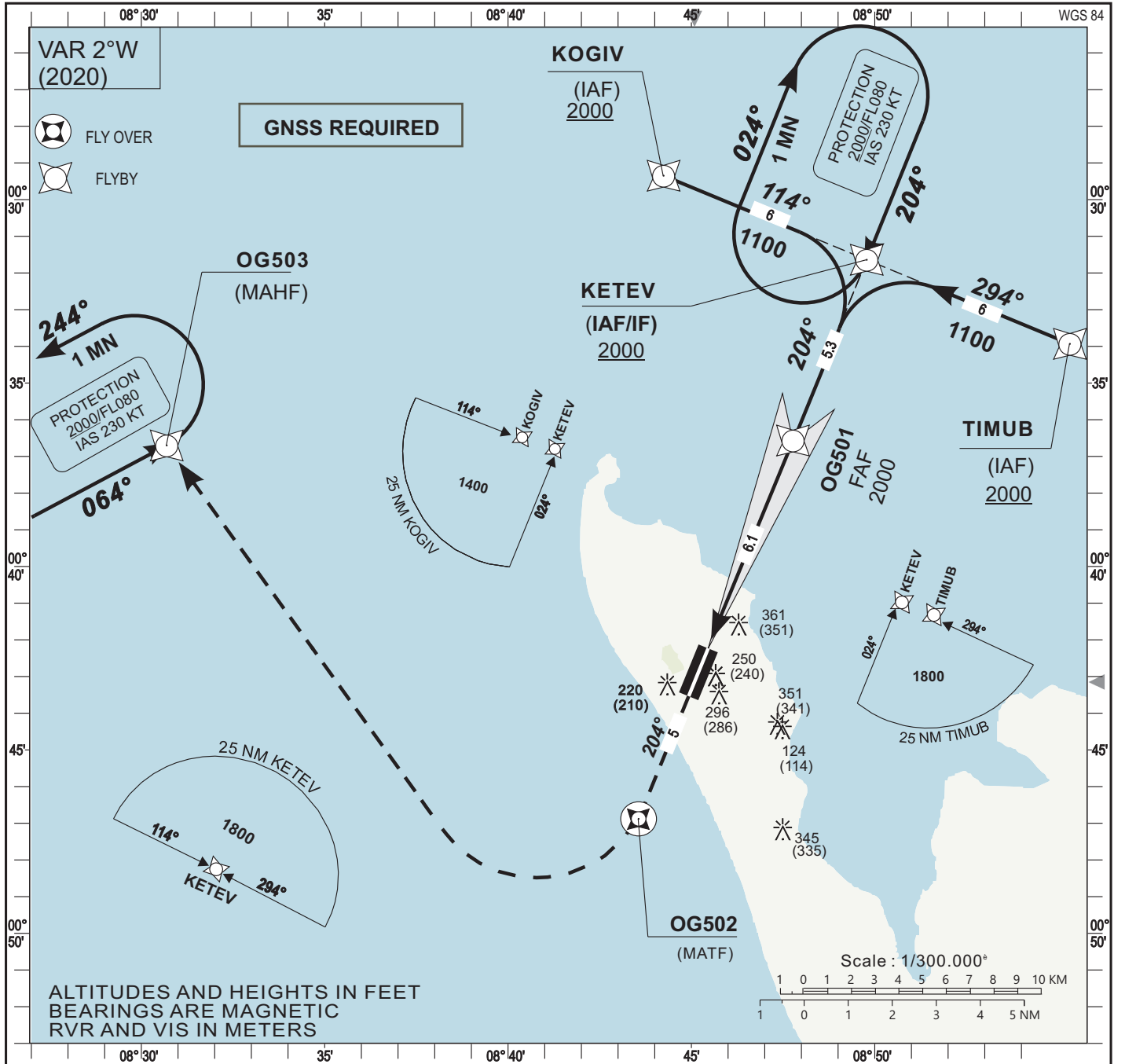
Notes : (1) With approach lighting
(2) Without approach lighting
(*) Daytime only. OCH and MDH AAL

RDH: 15 m

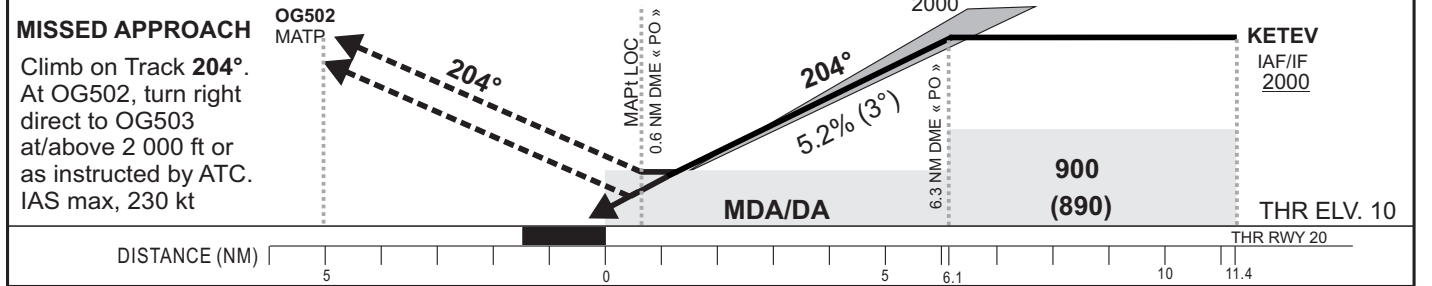
INSTRUMENT
APPROACH
CHART-ICAO

AERODROME ELV: 13 **APP** :Port-Gentil TWR on 118.3
THR RWY 20 ELEV: 10 **TWR** :Port-Gentil TWR on 118.3
HEIGHTS RELATED TO THR RWY 20 ELEV.

Port-Gentil (FOOG)
ILS Y or LOC Y RWY 20
IDENT ILS « PO » FREQ 109.1



Distance to ILS DME « PO »	THR 20	2	3	4	5	6	FAF
Altitude (ft)		630	950	1270	1590	1905	2000



CAT	CAT. I					LOC-DME					CIRCLING (*)				Timing				
	OCA (OCH)	DA	DH	RVR(1)	RVR(2)	OCA (OCH)	MDA	MDH	RVR(1)	RVR(2)	OCA (OCH)	MDA	MDH	VIS					
A	227 (217)	230 (220)	700	1000	444 (434)	450 (440)	1200	1500	657 (644)	660 (650)	1500	Timing							
B	236 (226)	240 (230)	700	1000	444 (434)	450 (440)	1300	1500	657 (644)	660 (650)	1600	FAF/THR 6.1 NM							
C	246 (236)	250 (240)	700	1000	444 (434)	450 (440)	1400	1800	804 (791)	810 (800)	2400	KT	MIN	SEC	KT	MIN	SEC		
												90	4	Min	04	140	2	Min	37
												100	3	Min	40	150	2	Min	26
												110	3	Min	20	160	2	Min	17
												120	3	Min	03				
												130	2	Min	49				

Notes: (1) With approach light
(2) Without approach light
(*) Day time only. OCH and MDH AAL

RDH: 15 m

: NEW EDITION
AMDT

TABULAR DESCRIPTION

ILS Y or LOC Y RWY 20

Serial Number	Path Descriptor	Waypoint Identifier	Fly-Over	Course °M(°T)	Magnetic Variation	Distance (NM)	Turn Direction	Altitude (ft)	Speed limit (Kt)	VPA/TCH (°/m)	Navigation Specification
10	IF	KOGIV	-	-		-	-	+2000	-230	-	RNP APCH
20	TF	KETEV	-	114 (112.3)		6.0	-	+2000	-230	-	RNP APCH
10	IF	TIMUB	-			-	-	+2000	-230	-	RNP APCH
20	TF	KETEV	-	294 (292.3)		6.0		+2000	-230	-	RNP APCH
10	IF	KETEV	-	-		-	-	+2000	-230	-	RNP APCH
20	TF	OG501	-	204 (202.3)		5.3	-	@2000	-	-	N/A
30	TF	RW20	Y	204 (202.3)	+2	6.1	-	@60	-	-3.0/15	N/A
40	CF	OG502	Y	204 (202.3)		5.0	-	-	-230	-	RNP APCH
50	DF	OG503	-	-		-	R	+2000	-230	-	RNP APCH
10	IF	KETEV	-	-		-	-	+2000	-230	-	RNP APCH
20	HM	KETEV	-	204 (202.3)		-	R	+2000	-230	-	RNP APCH
10	IF	OG503	-	-		-	-	+2000	-230	-	RNP APCH
20	HM	OG503	-	64 (061.7)		-	L	+2000	-230	-	RNP APCH

WAYPOINTS LIST

ILS Y or LOC Y RWY 20

Waypoint Identifier	Coordinates	
OG501	00°36'34.004"S	008°47'46.253"E
OG502	00°46'52.810"S	008°43'33.628"E
KOGIV	00°29'20.905"S	008°44'14.522"E
KETEV	00°31'38.421"S	008°49'46.917"E
TIMUB	00°33'55.932"S	008°55'19.316"E
OG503	00°36'42.031"S	008°30'41.543"E
RW20	00°42'13.960"S	008°45'27.470"E

:NEW EDITION
AMDT