

Tel : +(261) 20.76.581.13
 +(261) 33.23.370.01
 Fax : NIL
 AFTN : FMMYNYX
 E-mail : aim-fmmm@asecna.org
 AntananarivoNOF@gmail.com
 Web : https://aim.asecna.aero



**BUREAU NOTAM INTERNATIONAL
 D'ANTANANARIVO**
 B.P. 46 Ivato Aéroport Antananarivo -
 MADAGASCAR

**AIRAC AIP SUP
 NR 28/A/26FM
 19 JUN 2026**

LA REUNION* - MADAGASCAR - MAYOTTE* - UNION DES COMORES

* The AIC, AMDT, AIP and AIP SUP concerning these islands are published on <https://sia.aviation-civile.gouv.fr>

FMCH

NOUVEAUX DEPARTS NORMALISES AUX INSTRUMENTS
NEW STANDARD INSTRUMENT DEPARTURES

<i>Effective date :</i>	06 AUG 2026
<i>Validity :</i>	PERM

Les nouveaux départs normalisés aux instruments (SID) de l'aéroport de MORONI/PRINCE SAID IBRAHIM sont publiés dans le présent supplément d'AIP avant leur insertion dans l'AIP.

The new standard instrument departures (SID) of MORONI/PRINCE SAID IBRAHIM airport are published in this AIP supplement before inserting them in the AIP.

Les pages annexées au présent SUP AIP sont à insérer dans l'AIP ASECNA. Ces pages sont :

The pages attached to this AIP SUP shall be inserted in ASECNA AIP. These pages are:

SID	AIP page	AIP page date
<ul style="list-style-type: none"> ▪ SOLAL 1D ▪ KINAN 1D ▪ VOHID 1D (RWY 20)	16AD2-FMCH-SID-RNP20	06 AUG 2026
	16AD2-FMCH-SID-RNP20-DATA	06 AUG 2026

THIS AIP SUP HAS 01 PAGE AND 2 APPENDICES

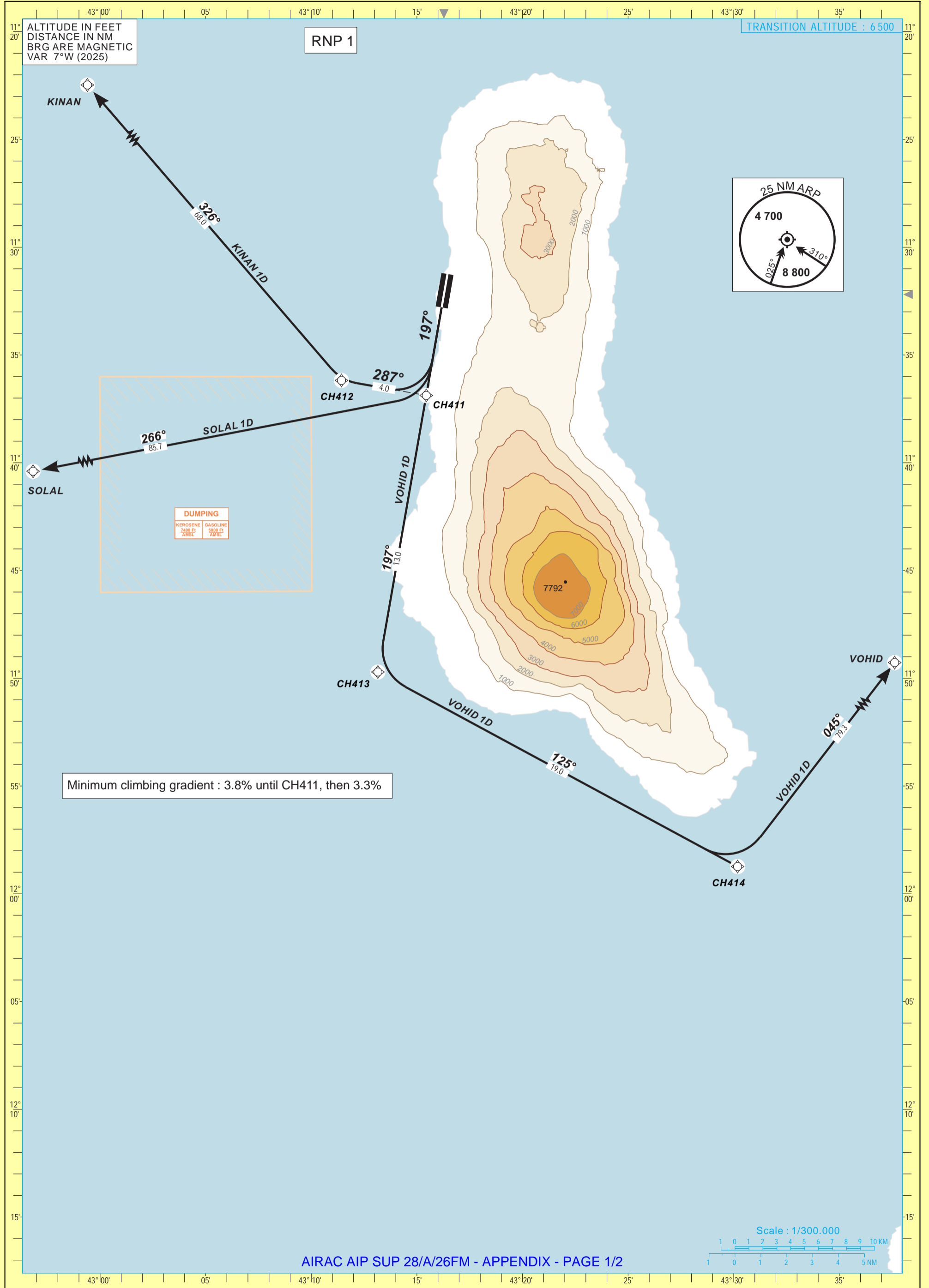


STANDARD DEPARTURE CHART
INSTRUMENT (SID RNP)
Categories A-B-C-D

APP 119.7
TWR 118.1

MORONI /Prince SAID IBRAHIM (FMCH)
RWY 20

SOLAL 1D - KINAN 1D - VOHID 1D





STANDARD DEPARTURE CHART
INSTRUMENT (SID RNP)
Categories A - B - C - D

APP 119.7
 TWR 118.1

MORONI /Prince SAID IBRAHIM (FMCH)

RWY 20

SOLAL 1D - KINAN 1D - VOHID 1D

TABULAR DESCRIPTION

Serial Number	Path Descriptor	Waypoint Identifier	Fly-Over	Course °M(°T)	Magnetic Variation	Distance (NM)	Turn Direction	Altitude (ft)	Speed limit (Kt)	Navigation Specification
KINAN 1D										
010	CF	CH411	—	197(190.0)	—	—	—	—	-265	RNP 1
020	TF	CH412	—	287(280.0)	—	4.0	R	—	—	RNP 1
030	TF	KINAN	—	326(319.0)	—	68.0	R	—	—	RNP 1
SOLAL 1D										
010	CF	CH411	—	197(190.0)	—	—	—	—	-265	RNP 1
020	TF	SOLAL	—	266(259.0)	—	85.7	R	—	—	RNP 1
VOHID 1D										
010	CF	CH411	—	197(190.0)	—	—	—	—	-265	RNP 1
020	TF	CH413	—	197(190.0)	—	13.0	—	—	—	RNP 1
030	TF	CH414	—	125(118.3)	—	19.0	L	—	—	RNP 1
040	TF	VOHID	—	045(037.9)	—	79.3	L	—	—	RNP 1

WAYPOINT LIST

Waypoint	Latitude	Longitude
KINAN	10°44'34.410"S	042°26'08.330"E
SOLAL	11°53'06.000"S	041°49'36.000"E
VOHID	10°55'46.000"S	044°19'40.000"E
CH411	11°36'52.668"S	043°15'26.625"E
CH412	11°36'10.885"S	043°11'25.786"E
CH413	11°49'42.651"S	043°13'09.168"E
CH414	11°58'44.303"S	043°30'11.090"E