

Tel : +(261) 20.76.581.13
 +(261) 33.23.370.01
 Fax : NIL
 AFTN : FMMMYNYX
 E-mail : aim-fmmm@asecna.org
 AntananarivoNOF@gmail.com
 Web : https://aim.asecna.aero



**BUREAU NOTAM INTERNATIONAL
 D'ANTANANARIVO**
 B.P. 46 Ivato Aéroport Antananarivo -
 MADAGASCAR

**AIRAC AIP SUP
 NR 27/A/26FM
 19 JUN 2026**

LA REUNION* - MADAGASCAR - MAYOTTE* - UNION DES COMORES

* The AIC, AMDT, AIP and AIP SUP concerning these islands are published on <https://sia.aviation-civile.gouv.fr>

FMCH

**NOUVELLES PROCEDURES D'APPROCHE AUX INSTRUMENTS
 NEW INSTRUMENT APPROACH PROCEDURES**

<i>Effective date :</i>	06 AUG 2026
<i>Validity :</i>	PERM

Les cartes qui sont relatives aux nouvelles procédures d'approche aux instruments de l'aéroport de MORONI/PRINCE SAID IBRAHIM sont publiées dans le présent supplément d'AIP avant leur insertion dans l'AIP.

The charts that are relative to the new instrument approach procedures of MORONI/PRINCE SAID IBRAHIM airport are published in this AIP supplement before inserting them in the AIP.

Les cartes (IAC) suivantes sont à retirer de l'AIP ASECNA à compter du 06 août 2026 :

The following IAC shall be withdrawn from the ASECNA AIP with effect from August 06th 2026 :

Procedure name	AIP page	AIP page date
ILS X or LOC X RWY 02	16AD2-FMCH-IAC-ILSX02	08 NOVEMBER 2018
ILS Y or LOC Y RWY 02	16AD2-FMCH-IAC-ILSY02	08 NOVEMBER 2018
ILS Z or LOC Z RWY 02	16AD2-FMCH-IAC-ILSZ02	08 NOVEMBER 2018
RNAV(GNSS) - RWY 02	16AD2-FMCH-IAC-RNAV02	08 NOVEMBER 2018
VOR - RWY 02	16AD2-FMCH-IAC-VOR02	08 NOVEMBER 2018
VPT- RWY 20	16AD2-FMCH-IAC-VPT20	08 NOVEMBER 2018

Les cartes (IAC) annexées au présent SUP AIP sont à insérer dans l'AIP ASECNA. Ces cartes sont :

The IAC attached to this AIP supplement shall be inserted in ASECNA AIP. These charts are :

Procedure name	AIP page	AIP page date
ILS Y or LOC Y RWY 02	16AD2-FMCH-IAC-ILSY02	06 AUG 2026
	16AD2-FMCH-IAC-ILSY02-DATA	06 AUG 2026
ILS Z or LOC Z RWY 02	16AD2-FMCH-IAC-ILSZ02	06 AUG 2026
	16AD2-FMCH-IAC-ILSZ02-DATA	06 AUG 2026
RNP RWY 02	16AD2-FMCH-IAC-RNP02	06 AUG 2026
	16AD2-FMCH-IAC-RNP02-DATA	06 AUG 2026
RNP RWY 20	16AD2-FMCH-IAC-RNP20	06 AUG 2026
	16AD2-FMCH-IAC-RNP20-DATA	06 AUG 2026
VOR RWY 02	16AD2-FMCH-IAC-VOR02	06 AUG 2026

Les codes de nom à cinq lettres (5LNC) suivants sont à insérer dans l'AIP ASECNA « 00 ENR 4.4 » :

The following five-letter name codes (5LNC) shall be inserted in ASECNA AIP « 00 ENR 4.4 » :

INDICATIF CODÉ 1	COORDONNÉES 2	ROUTE ATS ou AUTRE ROUTE 3
APMED	11°45'08.13"S 043°04'39.22"E	MORONI IAF
ESTAV	11°55'36.50"S 043°12'05.93"E	MORONI IAF
NIBIV	11°16'48.16"S 043°22'20.81"E	MORONI IAF
TIKOB	11°15'28.95"S 043°11'35.03"E	MORONI IAF
AVENO	11°55'22.13"S 043°10'51.89"E	MORONI IAF

Les SUP AIP et NOTAM ci-après seront sans objet à compter du 06 août 2026 :

The following AIP SUP and NOTAM will become void from August 06th 2026 :

AIP SUP & NOTAM	SUBJECT
AIP SUP 49/A/17FM	IAC update
AIP SUP 67/A/17FM	Correction of the AIP SUP 49/A/17FM
NOTAM A1618/22	IAP 'ILS Y OR LOC Y RWY 02' IF PSN
NOTAM A1619/22	IAP 'ILS Z OR LOC Z RWY 02' IF PSN

THIS AIP SUP HAS 02 PAGES AND 8 APPENDICES



INSTRUMENT APPROACH CHART
Categories A-B-C-D

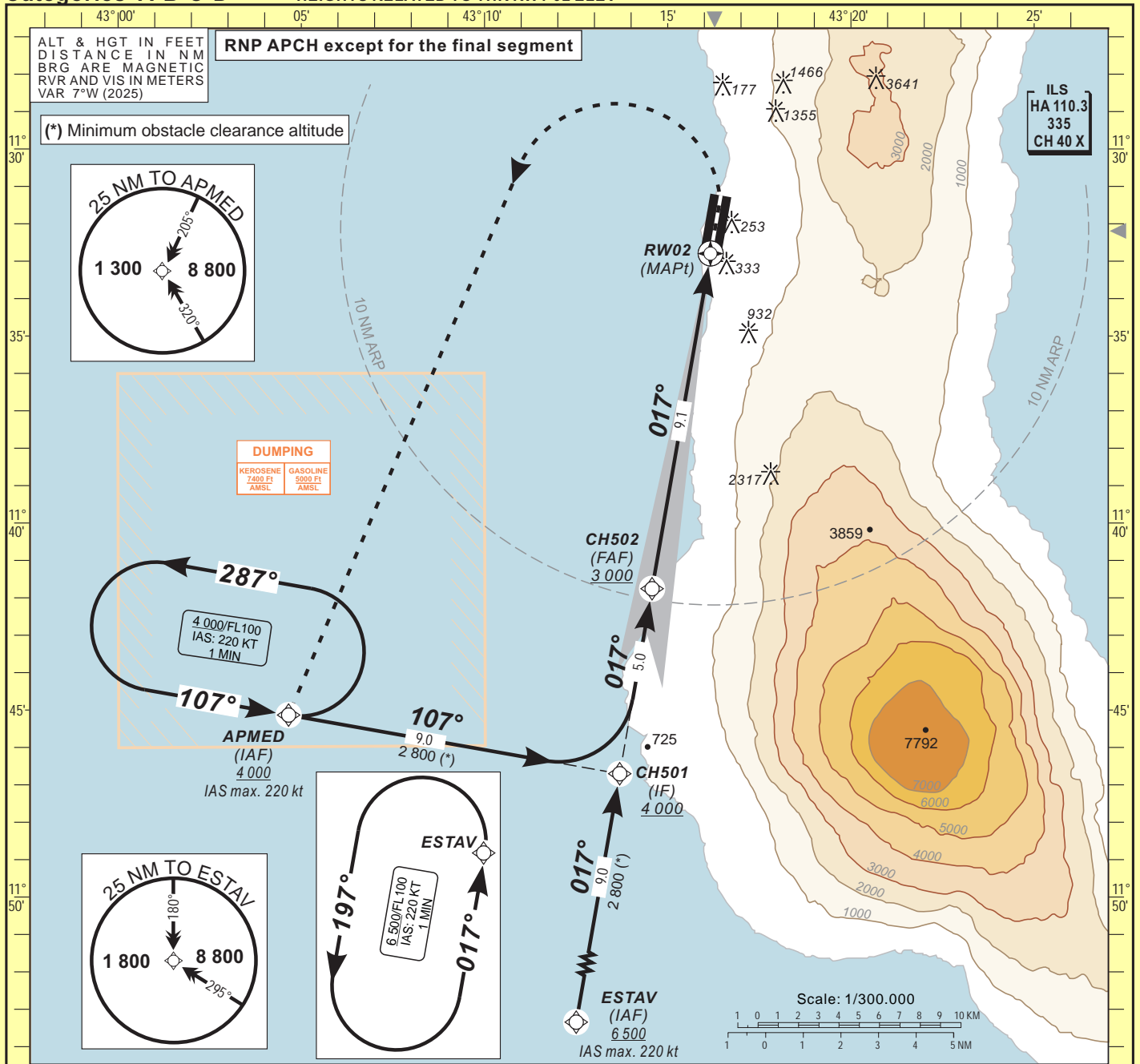
AERODROME ELEV: 93
THR RWY 02 ELEV: 65

APP : 119.7
TWR : 118.1

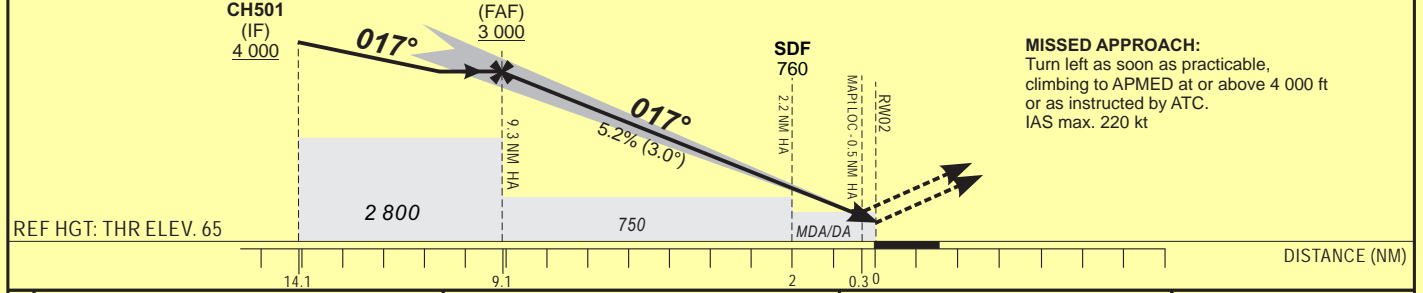
MORONI /Prince SAID IBRAHIM (FMCH)

ILS Y or LOC Y RWY 02

HEIGHTS RELATED TO THR RWY 02 ELEV



TRANSITION ALTITUDE: 6 500	FAF	9	8	7	6	5	4	3	2	TO HA DME (NM)
	3 000	2 920	2 600	2 280	1 970	1 650	1 330	1 010	690	ALTITUDE (FT)



MISSED APPROACH:
Turn left as soon as practicable, climbing to APMED at or above 4 000 ft or as instructed by ATC. IAS max. 220 kt

CAT	CAT. I				LOC-DME				Timing	FAF / THR		
	OCA (OCH)	DA	DH	RVR ¹	RVR ²	OCA (OCH)	MDA	MDH		RVR ¹	RVR ²	9.1 NM
A	433 (368)	440 (370)	1300	1300	1700	618 (553)	620 (560)	2100	2500			
B	445 (380)	450 (380)	1300	1300	1700	618 (553)	620 (560)	2100	2500			
C	454 (389)	460 (390)	1400	1400	1800	618 (553)	620 (560)	2100	2500			
D	464 (399)	470 (400)	1400	1400	1800	618 (553)	620 (560)	2100	2500			

Notes:
¹ With approach lights
² Without approach lights
 - RDH: 15 m
AIRAC AIP SUP 27/A/26FM - APPENDIX - PAGE 1/8


**INSTRUMENT
APPROACH CHART
Categories A-B-C-D**

 AERODROME ELEV: 93
 THR RWY 02 ELEV: 65
 HEIGHTS RELATED TO THR RWY 02 ELEV

 APP : 119.7
 TWR : 118.1

MORONI /Prince SAID IBRAHIM (FMCH)
ILS Y or LOC Y RWY 02
TABULAR DESCRIPTION

Serial Number	Path Descriptor	Waypoint Identifier	Fly-Over	Course °M(°T)	Magnetic Variation	Distance (NM)	Turn Direction	Altitude (ft)	Speed limit (Kt)	VPA/TCH (°/m)	Navigation Specification
010	IF	APMED	—	—	—	—	—	+4000	-220	—	RNP APCH
020	TF	CH501	—	107(100.0)	—	9.0	—	+4000	—	—	RNP APCH
010	IF	ESTAV	—	—	—	—	—	+6500	-220	—	RNP APCH
020	TF	CH501	—	017(010.0)	—	9.0	—	+4000	—	—	RNP APCH
010	IF	CH501	—	—	—	—	—	+4000	—	—	RNP APCH
020	TF	CH502	—	017(010.0)	—	5.0	—	+3000	—	—	N/A
030	CF	RW02	Y	017(010.0)	—	9.1	—	@115	—	3.0/15	N/A
040	DF	APMED	—	—	—	—	L	+4000	-220	—	RNP APCH
010	IF	ESTAV	—	—	—	—	—	+6500	-220	—	RNP APCH
020	HM	ESTAV	—	017(010.0)	—	—	L	+6500	-220	—	RNP APCH
010	IF	APMED	—	—	—	—	—	+4000	-220	—	RNP APCH
020	HM	APMED	—	107(100.0)	—	—	L	+4000	-220	—	RNP APCH

WAYPOINT LIST

Waypoint Identifier	Coordinates	
APMED	11°45'08.128"S	043°04'39.220"E
ESTAV	11°55'36.500"S	043°12'05.926"E
CH501	11°46'42.277"S	043°13'41.388"E
CH502	11°41'45.480"S	043°14'34.378"E
RW02	11°32'47.531"S	043°16'10.342"E



INSTRUMENT APPROACH CHART
Categories A-B-C-D

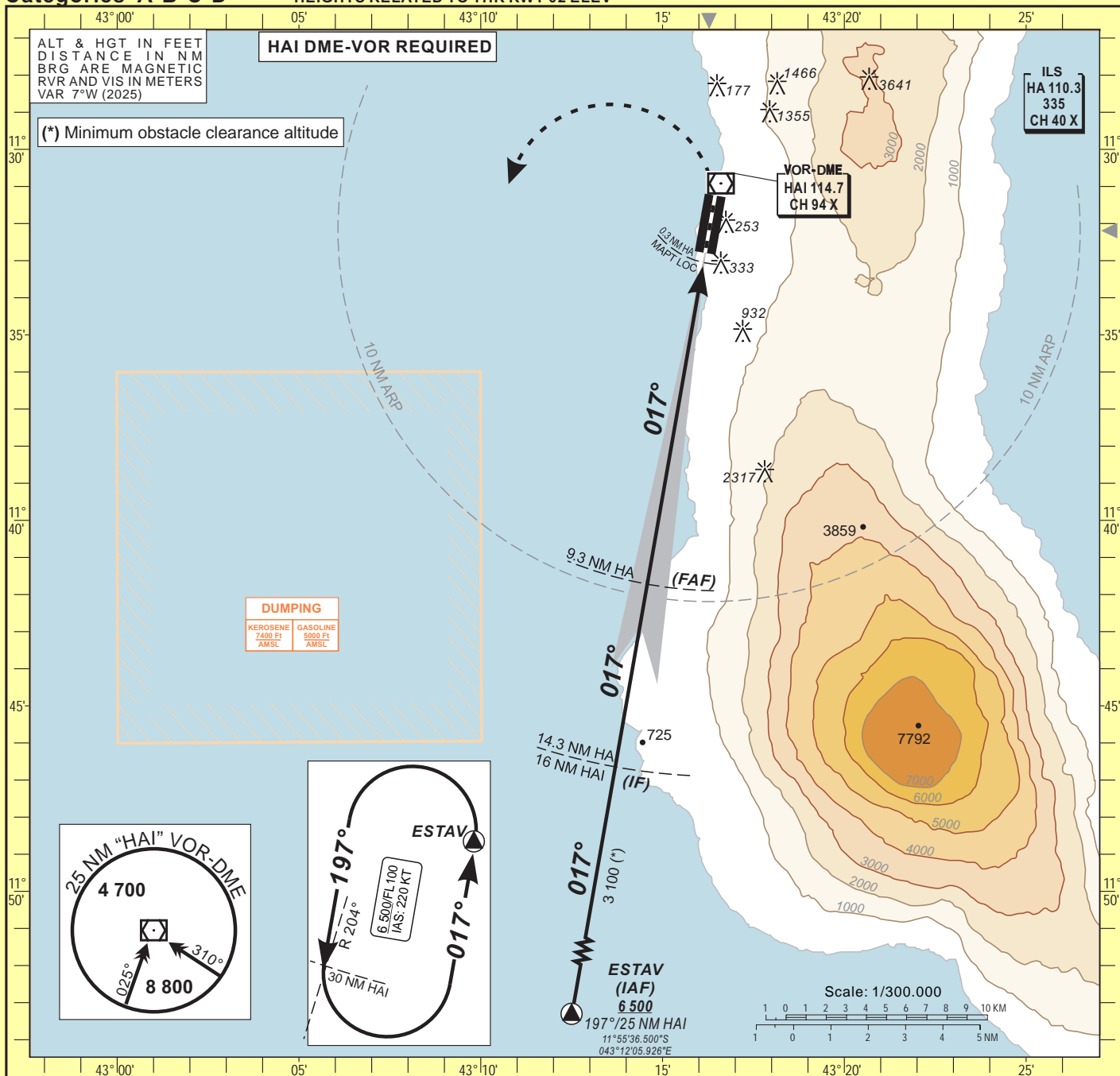
AERODROME ELEV: 93
THR RWY 02 ELEV: 65

APP : 119.7
TWR : 118.1

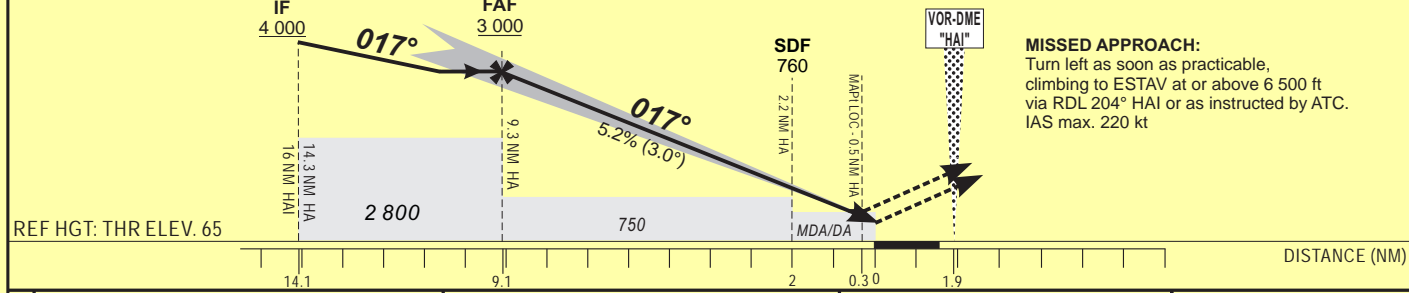
MORONI /Prince SAID IBRAHIM (FMCH)

ILS Z or LOC Z RWY 02

HEIGHTS RELATED TO THR RWY 02 ELEV



TRANSITION ALTITUDE: 6 500	FAF	9	8	7	6	5	4	3	2	TO HA DME (NM)
	3 000	2 920	2 600	2 280	1 970	1 650	1 330	1 010	690	ALTITUDE (FT)



CAT	CAT. I				LOC-DME				Timing	FAF / THR				
	OCA (OCH)	DA	DH	RVR ¹	RVR ²	OCA (OCH)	MDA	MDH		RVR ¹	RVR ²	KT	MIN SEC	KT
A	433 (368)	440 (370)	1300	1300	1700	618 (553)	620 (560)	2100	2500		90	6 Min 04	140	3 Min 54
B	445 (380)	450 (380)	1300	1300	1700	618 (553)	620 (560)	2100	2500		100	5 Min 28	150	3 Min 38
C	454 (389)	460 (390)	1400	1400	1800	618 (553)	620 (560)	2100	2500		110	4 Min 58	160	3 Min 25
D	464 (399)	470 (400)	1400	1400	1800	618 (553)	620 (560)	2100	2500		120	4 Min 33	170	3 Min 13
											130	4 Min 12	180	3 Min 02

Notes:
¹ With approach lights
² Without approach lights
 - RDH: 15 m
AIRAC AIP SUP 27/A/26FM - APPENDIX - PAGE 3/8



INSTRUMENT APPROACH CHART
Categories A-B-C-D

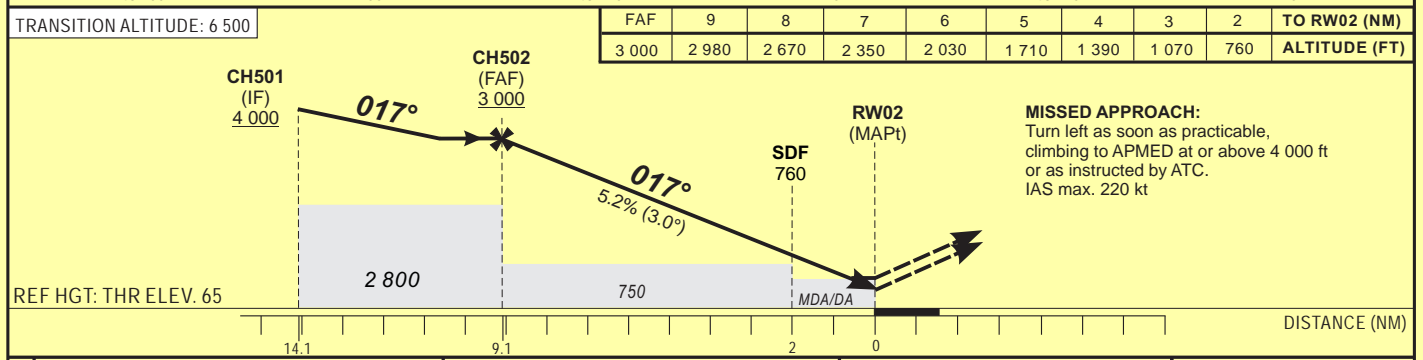
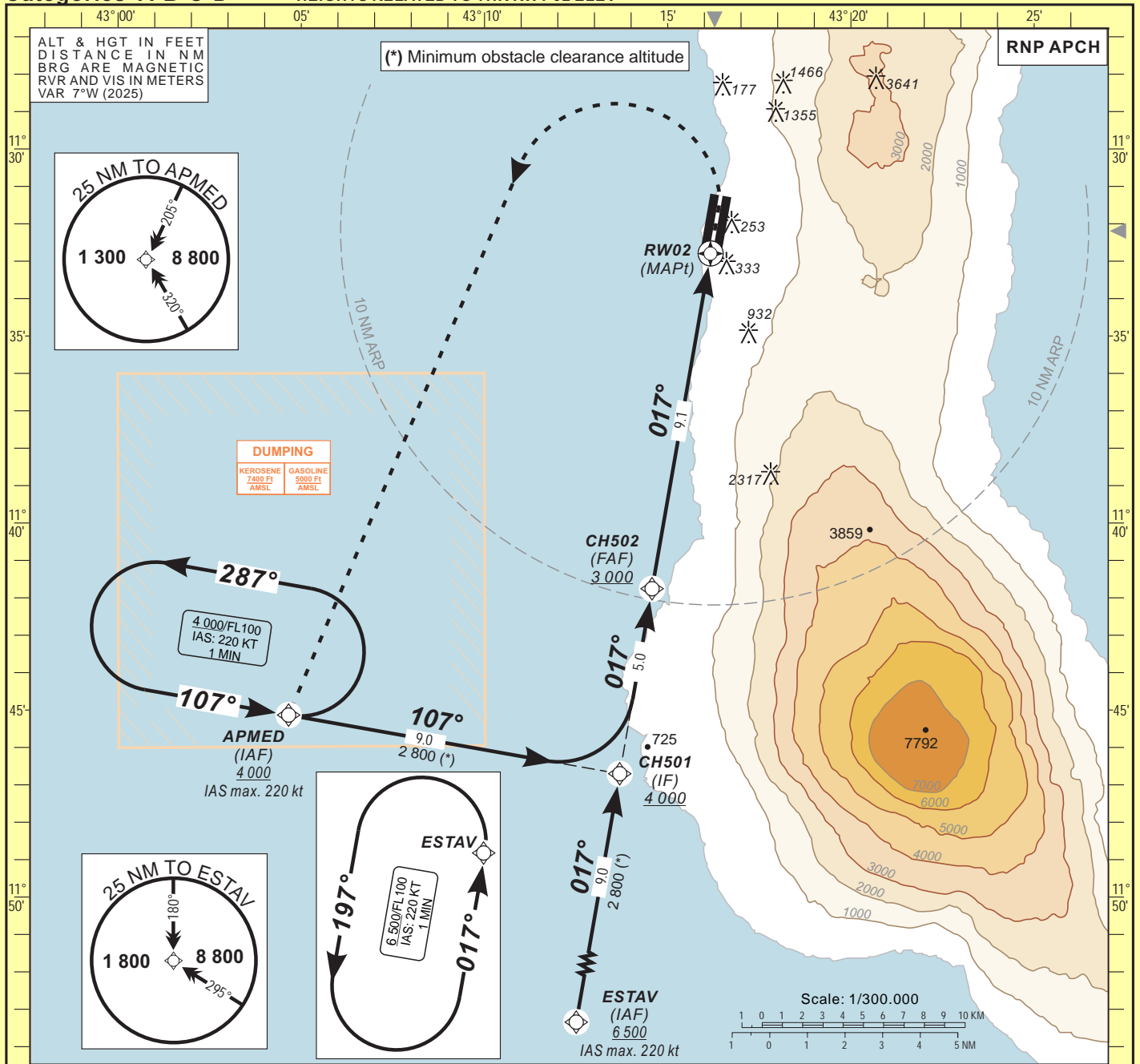
AERODROME ELEV: 93
THR RWY 02 ELEV: 65

APP : 119.7
TWR : 118.1

MORONI /Prince SAID IBRAHIMI (FMCH)

RNP RWY 02

HEIGHTS RELATED TO THR RWY 02 ELEV



CAT	LNAV VNAV				LNAV				Timing	FAF / THR 9.1 NM				
	OCA (OCH)	DA	DH	RVR ¹	RVR ²	OCA (OCH)	MDA	MDH		RVR ¹	RVR ²	KT	MIN SEC	KT
A	638 (573)	640 (580)		2200	2600	730 (665)	730 (670)		2700	3100			140	3 Min 54
B	638 (573)	640 (580)		2200	2600	730 (665)	730 (670)		2700	3100			150	3 Min 38
C	639 (574)	640 (580)		2200	2600	730 (665)	730 (670)		2700	3100			160	3 Min 25
D	650 (585)	650 (590)		2300	2700	730 (665)	730 (670)		2700	3100			170	3 Min 13
													180	3 Min 02

Notes: ¹ With approach lights
² Without approach lights

- RDH: 15 m


**INSTRUMENT
APPROACH CHART**
Categories A-B-C-D

 AERODROME ELEV: 93
 THR RWY 02 ELEV: 65

 APP : 119.7
 TWR : 118.1

MORONI /Prince SAID IBRAHIM (FMCH)
RNP RWY 02

HEIGHTS RELATED TO THR RWY 02 ELEV

TABULAR DESCRIPTION

Serial Number	Path Descriptor	Waypoint Identifier	Fly-Over	Course °M(°T)	Magnetic Variation	Distance (NM)	Turn Direction	Altitude (ft)	Speed limit (Kt)	VPA/TCH (°/m)	Navigation Specification
010	IF	APMED	—	—	—	—	—	+4000	-220	—	RNP APCH
020	TF	CH501	—	107(100.0)	—	9.0	—	+4000	—	—	RNP APCH
010	IF	ESTAV	—	—	—	—	—	+6500	-220	—	RNP APCH
020	TF	CH501	—	017(010.0)	—	9.0	—	+4000	—	—	RNP APCH
010	IF	CH501	—	—	—	—	—	+4000	—	—	RNP APCH
020	TF	CH502	—	017(010.0)	—	5.0	—	+3000	—	—	RNP APCH
030	CF	RW02	Y	017(010.0)	—	9.1	—	@115	—	3.0/15	RNP APCH
040	DF	APMED	—	—	—	—	L	+4000	-220	—	RNP APCH
010	IF	ESTAV	—	—	—	—	—	+6500	-220	—	RNP APCH
020	HM	ESTAV	—	017(010.0)	—	—	L	+6500	-220	—	RNP APCH
010	IF	APMED	—	—	—	—	—	+4000	-220	—	RNP APCH
020	HM	APMED	—	107(100.0)	—	—	L	+4000	-220	—	RNP APCH

WAYPOINT LIST

Waypoint Identifier	Coordinates	
APMED	11°45'08.128"S	043°04'39.220"E
ESTAV	11°55'36.500"S	043°12'05.926"E
CH501	11°46'42.277"S	043°13'41.388"E
CH502	11°41'45.480"S	043°14'34.378"E
RW02	11°32'47.531"S	043°16'10.342"E



**INSTRUMENT
APPROACH CHART**
Categories A-B-C-D

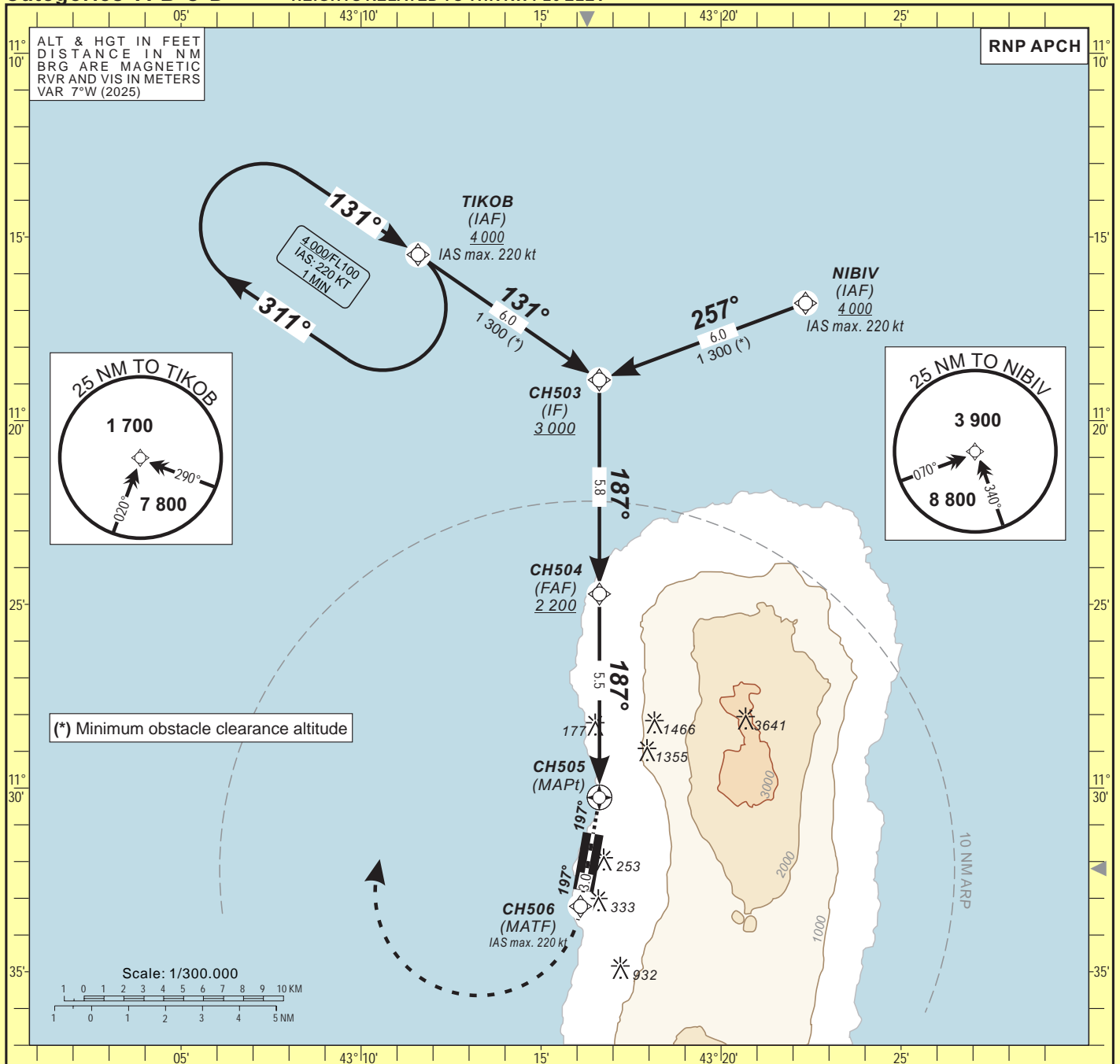
AERODROME ELEV: 93
THR RWY 20 ELEV: 78

APP : 119.7
TWR : 118.1

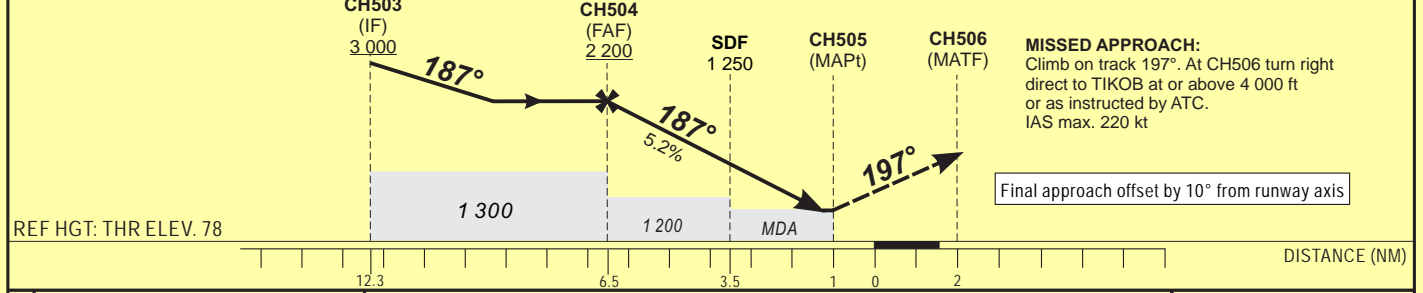
MORONI /Prince SAID IBRAHIM (FMCH)

RNP RWY 20

HEIGHTS RELATED TO THR RWY 20 ELEV



TRANSITION ALTITUDE: 6 500	FAF	5	4	3	2	TO RW20 (NM)
	2 200	2 040	1 720	1 410	1 090	ALTITUDE (FT)



CAT	LNAV				Timing	FAF / THR 6.5 NM				
	OCA (OCH)	MDA	MDH	RVR		KT	MIN	SEC	KT	MIN
A	879 (801)	880 (810)	880 (810)	3800	90	4	Min 20	140	2	Min 47
B	879 (801)	880 (810)	880 (810)	3800	100	3	Min 54	150	2	Min 36
C	879 (801)	880 (810)	880 (810)	3800	110	3	Min 33	160	2	Min 26
D	879 (801)	880 (810)	880 (810)	3800	120	3	Min 15	170	2	Min 18
					130	3	Min 00	180	2	Min 10



**INSTRUMENT
APPROACH CHART
Categories A-B-C-D**

AERODROME ELEV: 93
THR RWY 20 ELEV: 78
HEIGHTS RELATED TO THR RWY 20 ELEV

APP : 119.7
TWR : 118.1

MORONI /Prince SAID IBRAHIM (FMCH)

RNP RWY 20

TABULAR DESCRIPTION

Serial Number	Path Descriptor	Waypoint Identifier	Fly-Over	Course °M(°T)	Magnetic Variation	Distance (NM)	Turn Direction	Altitude (ft)	Speed limit (Kt)	VPA/TCH (°/m)	Navigation Specification
010	IF	NIBIV	—	—	—	—	—	+4000	-220	—	RNP APCH
020	TF	CH503	—	257(249.7)	—	6.0	—	+3000	—	—	RNP APCH
010	IF	TIKOB	—	—	—	—	—	+4000	-220	—	RNP APCH
020	TF	CH503	—	131(124.4)	—	6.0	—	+3000	—	—	RNP APCH
010	IF	CH503	—	—	—	—	—	+3000	—	—	RNP APCH
020	TF	CH504	—	187(180.0)	—	5.8	—	+2200	—	—	RNP APCH
030	TF	CH505	Y	187(180.0)	—	5.5	—	+450	—	—	RNP APCH
040	CF	CH506	—	197(190.0)	—	3.0	—	—	-220	—	RNP APCH
050	DF	TIKOB	—	—	—	—	R	+4000	—	—	RNP APCH
010	IF	TIKOB	—	—	—	—	—	+4000	-220	—	RNP APCH
020	HM	TIKOB	—	131(124.4)	—	—	R	+4000	-220	—	RNP APCH

WAYPOINT LIST

Waypoint Identifier	Coordinates	
NIBIV	11°16'48.161"S	043°22'20.809"E
TIKOB	11°15'28.946"S	043°11'35.028"E
CH503	11°18'53.563"S	043°16'37.135"E
CH504	11°24'43.144"S	043°16'37.320"E
CH505	11°30'15.200"S	043°16'37.497"E
CH506	11°33'13.285"S	043°16'05.750"E



INSTRUMENT APPROACH CHART
Categories A-B-C-D

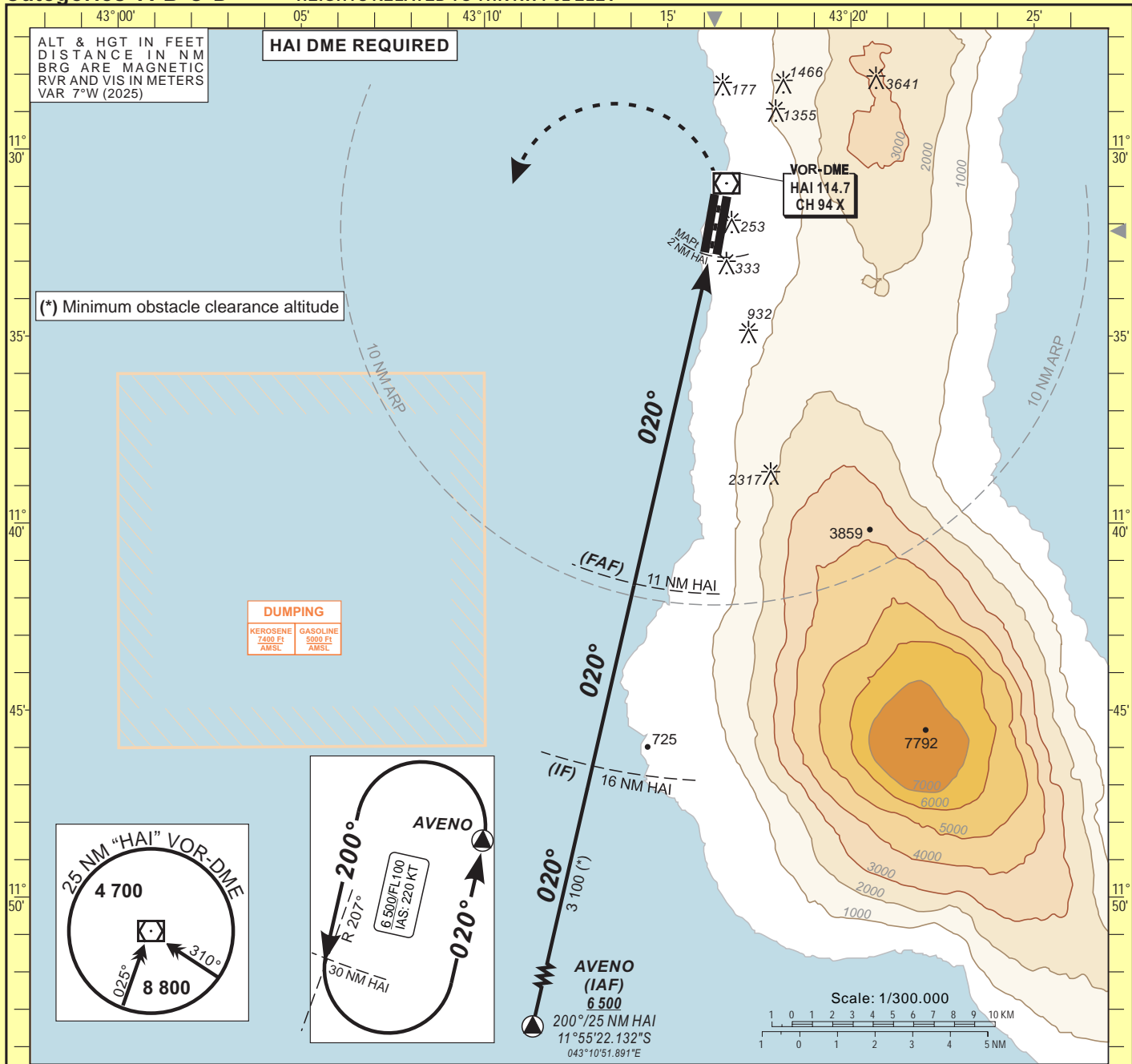
AERODROME ELEV: 93
THR RWY 02 ELEV: 65

APP : 119.7
TWR : 118.1

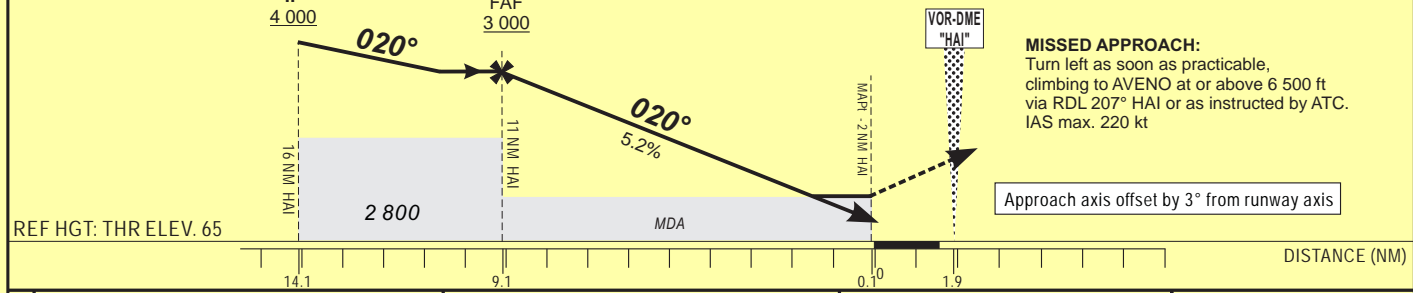
MORONI /Prince SAID IBRAHIM (FMCH)

VOR RWY 02

HEIGHTS RELATED TO THR RWY 02 ELEV



TRANSITION ALTITUDE: 6 500	FAF	10	9	8	7	6	5	4	TO HAI DME (NM)
	3 000	2 700	2 380	2 060	1 740	1 420	1 110	790	ALTITUDE (FT)



CAT	VOR-DME				Timing	FAF / THR	
	OCA (OCH)	MDA MDH	RVR 1	RVR 2		KT	MIN SEC
A	1273 (1208)	1280 (1210)	5000	5000	90	6 Min 04	140 3 Min 54
B	1273 (1208)	1280 (1210)	5000	5000	100	5 Min 28	150 3 Min 38
C	1273 (1208)	1280 (1210)	5000	5000	110	4 Min 58	160 3 Min 25
D	1273 (1208)	1280 (1210)	5000	5000	120	4 Min 33	170 3 Min 13
					130	4 Min 12	180 3 Min 02

Notes:
 1 With approach lights
 2 Without approach lights

AIRAC AIP SUP 27/A/26FM - APPENDIX - PAGE 8/8