

Tel : + (261) 20.76.581.13
 + (261) 33.23.370.01
 Fax : NIL
 AFTN : FMMYNYX
 E-mail : aim-fmmm@asecna.org
 AntananarivoNOF@gmail.com
 Web : https://aim.asecna.aero



**BUREAU NOTAM INTERNATIONAL
 D'ANTANANARIVO**
 B.P. 46 Ivato Aéroport Antananarivo -
 MADAGASCAR

**AIRAC AIP SUP
 NR 35/B/25FM
 09 APR 2025**

LA REUNION* - MADAGASCAR - MAYOTTE* - UNION DES COMORES

* The AIC, AMDT, AIP and AIP SUP concerning these islands are published on <https://sia.aviation-civile.gouv.fr>

AIP SUP 28/B/25FM IS REPLACED BY THIS AIP SUP

FMNR

NOUVELLES PROCEDURES D'APPROCHE AUX INSTRUMENTS
NEW INSTRUMENT APPROACH PROCEDURES

<i>Effective date :</i>	15 MAY 2025
<i>Validity :</i>	PERM

Les cartes corrigées qui sont relatives aux nouvelles procédures d'approche aux instruments « RNP - RWY 14 » et « RNP - RWY 32 » concernant l'aérodrome de MAROANTSETRA sont publiées dans le présent supplément d'AIP avant leur insertion dans l'AIP.

Les corrections sont comme suit :

The corrected charts that are relative to the new instruments approach procedure « RNP - RWY 14 » and « RNP - RWY 32 » concerning MAROANTSETRA aerodrome are published in this AIP supplement before inserting them in the AIP.

The corrections are as follow :

IAP IDENT	CHART IDENT	CORRECTIONS
RNP - RWY 14	09AD2-FMNR-IAC-RNP14	HOLDING OVER EXEPI ❖ Minimum FL for holding : • Read « FL090 » instead of « 9000 »
	09AD2-FMNR-IAC-RNP14-DATA (TABULAR DESCRIPTION)	HOLDING OVER EXEPI ❖ Minimum FL for holding (Column 'Altitude') : • Read « +FL090 » instead of « +6200 »
RNP - RWY32	09AD2-FMNR-IAC-RNP32	HOLDING OVER IBSAG ❖ Minimum FL for holding : • Read « FL090 » instead of « 9000 »
	09AD2-FMNR-IAC-RNP32-DATA (TABULAR DESCRIPTION)	HOLDING OVER IBSAG ❖ Inbound track (Column 'Course') : • Read « 053(040.6) » instead of « 233(220.6) » ❖ Minimum FL for holding (Column 'Altitude'): • Read « +FL090 » instead of « +5700 »

AMEND ASECNA AIP :

- 09AD2-FMNR-IAC-RNP14
- 09AD2-FMNR-IAC-RNP32
- 09AD2-FMNR-IAC-RNP14-DATA
- 09AD2-FMNR-IAC-RNP32-DATA

INSERT THE FOLLOWING 5LNC IN ASECNA AIP « 00 ENR 4.4 » :

INDICATIF CODÉ 1	COORDONNÉES 2	ROUTE ATS ou AUTRE ROUTE 3
UMTAS	15°14'14.67"S 049°26'53.42"E	IAF/IF 09AD2-FMNR-IAC-RNP14
DUVTA	15°18'49.12"S 049°22'51.01"E	IAF 09AD2-FMNR-IAC-RNP14
EXEPI	15°09'40.14"S 049°30'55.66"E	IAF 09AD2-FMNR-IAC-RNP14
NETAP	15°39'39.26"S 049°57'30.41"E	IAF/IF 09AD2-FMNR-IAC-RNP32
GADKU	15°35'04.41"S 050°01'32.75"E	IAF 09AD2-FMNR-IAC-RNP32
IBSAG	15°44'14.03"S 049°53'27.90"E	IAF 09AD2-FMNR-IAC-RNP32

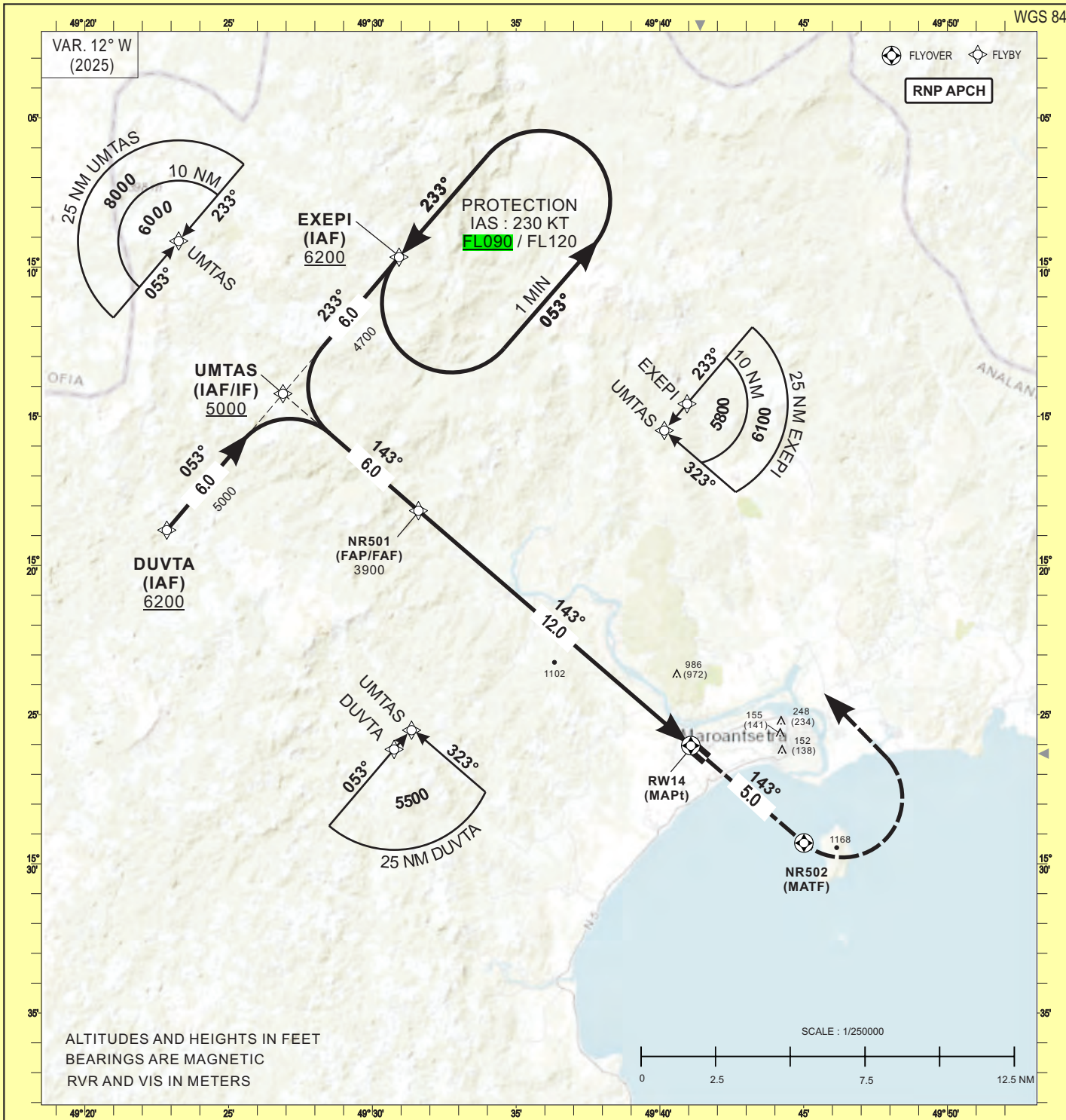
THIS AIP SUP HAS 02 PAGES AND 2 APPENDICES

INSTRUMENT
APPROACH
CHART-ICAO

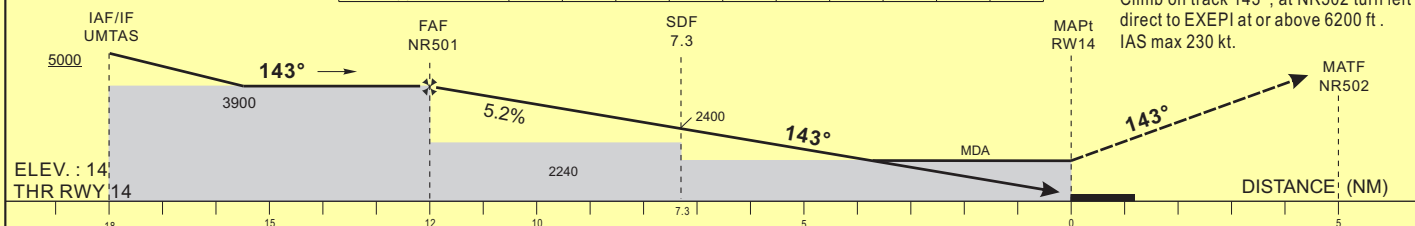
AERODROME ELEV 15 FT
HEIGHTS RELATED TO THR RWY14 ELEV 14 FT

AFIS 119.8
A/G 5484

MAROANTSETRA (FMNR)
RNP - RWY 14
(ACFT CAT A, B, C)



TRANSITION ALTITUDE : 4500	DME distance to THR (NM)	FAF	11	10	9	8	7	6	5	4
	Altitude (ft)	3900	3540	3220	2910	2590	2270	1960	1640	1330



CAT	LNAV			CIRCLING I			VIS	RVR for take-off CATA - B - C : 400
	OCA (OCH)	MDA	MDH	OCA (OCH)	MDA	MDH		
A	1249 (1235)	1250 (1240)	1500	942 (927)	950 (930)	1500		Timing FAF - THR 12.0 NM KT MIN SEC KT MIN SEC 90 8 00 140 5 09 100 7 12 150 4 48 110 6 33 160 4 30 120 6 00 170 130 5 32 180
B			1500	1282 (1267)	1290 (1270)	1600		
C			2000	1651 (1636)	1660 (1640)	2400		

Notes : - RDH = 50 feet
 Without approach light - Daytime only - OCH and MDH AAL

CORRECTIONS : New version:

INSTRUMENT
APPROACH
CHART-ICAO

AERODROME ELEV 15 FT
HEIGHTS RELATED TO DTHR RWY14 ELEV 14 FT

AFIS 119.8
A/G 5484

MAROANTSETRA (FMNR)
RNP - RWY 14
(ACFT CAT A, B, C)

TABULAR DESCRIPTION

RNP RWY 14

Serial Number	Path Descriptor	Waypoint Identifier	Fly- Over	Course °M(°T)	Magnetic Variation	Distance (NM)	Turn Direction	Altitude (ft)	Speed limit (Kt)	VPA / TCH	Navigation Specification
10	IF	DUVTA	-					+6200	230	-	RNP APCH
20	TF	UMTAS	-	053(040.6)		6.0		+5000	230	-	RNP APCH
10	IF	EXEPI	-					+6200	230	-	RNP APCH
20	TF	UMTAS	-	233(220.6)		6.0		+5000	230	-	RNP APCH
10	IF	UMTAS	-					+5000	230	-	RNP APCH
20	TF	NR501	-	143(130.6)		6.0		@3900	-	-	RNP APCH
30	TF	RW14	Y	143(130.6)	+12.0	12.0		@64	-	-3/15	RNP APCH
40	TF	NR502	Y	143(130.6)		5.0	L	-	-		RNP APCH
50	DF	EXEPI	-					+6200	-		RNP APCH
10	IF	EXEPI	-					+FL090	230	-	RNP APCH
20	HM	EXEPI	Y	233(220.6)			L	+FL090	230	-	RNP APCH

WAYPOINT LIST

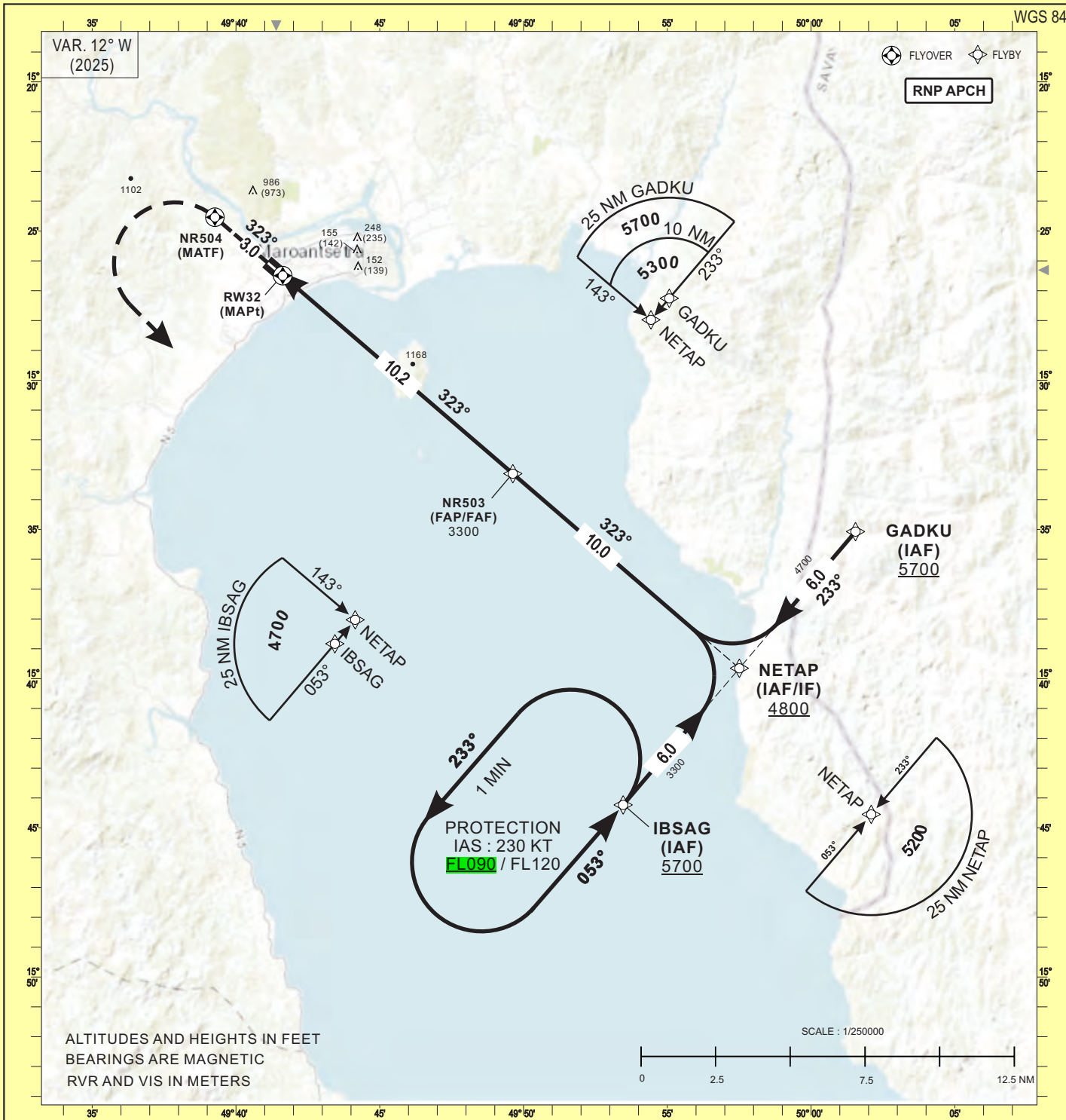
RNP RWY 14		
Waypoint Identifier	Coordinates	
NR501	15°18'09.989"S	049°31'36.144"E
UMTAS	15°14'14.666"S	049°26'53.422"E
DUVTA	15°18'49.123"S	049°22'51.008"E
EXEPI	15°09'40.135"S	049°30'55.661"E
NR502	15°29'18.118"S	049°45'00.469"E
RW14	15°26'02.262"S	049°41'04.438"E

INSTRUMENT
APPROACH
CHART-ICAO

AERODROME ELEV 15 FT
HEIGHTS RELATED TO THR RWY14 ELEV 13 FT

AFIS 119.8
A/G 5484

MAROANTSETRA (FMNR)
RNP - RWY32
(ACFT CAT A, B, C)



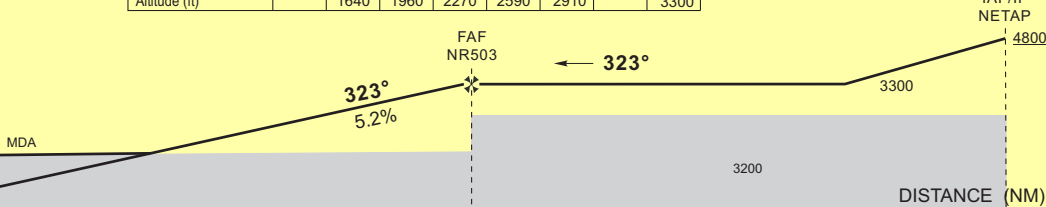
TRANSITION ALTITUDE : 4500

DME distance to THR (NM)	5	6	7	8	9	FAF
Altitude (ft)	1640	1960	2270	2590	2910	3300

Missed approach:

Climb on track 323°, at MAPt NR504 turn left direct to IBSAG at or above 5700 ft. IAS max 230 kt.

ELEV. : 13
THR RWY 32



CORRECTIONS : New version.

CAT	LNAV			CIRCLING			VIS
	OCA (OCH)	MDA MDH	RVR	OCA (OCH)	MDA MDH		
A			1500	942 (927)	950 (930)	1500	
B	1385 (1372)	1390 (1380)	1500	1282 (1267)	1290 (1270)	1600	
C			2000	1651 (1636)	1660 (1640)	2400	

RVR for take-off
CATA - B - C : 400

Timing		FAF - THR	
KT	MIN SEC	KT	MIN SEC
90	6 Min 48	140	4 Min 22
100	6 Min 07	150	4 Min 05
110	5 Min 34	160	3 Min 50
120	5 Min 06		
130	4 Min 42		

Notes : - RDH = 50 feet

■ Without approach light - Daytime only - OCH and MDH AAL

INSTRUMENT
APPROACH
CHART-ICAO

AERODROME ELEV 15 FT
HEIGHTS RELATED TO THR RWY14 ELEV 13 FT

AFIS 119.8
A/G 5484

MAROANTSETRA (FMNR)
RNP - RWY32
(ACFT CAT A, B, C)

TABULAR DESCRIPTION

RNP RWY 32

Serial Number	Path Descriptor	Waypoint Identifier	Fly- Over	Course °M(°T)	Magnetic Variation	Distance (NM)	Turn Direction	Altitude (ft)	Speed limit (Kt)	VPA / TCH	Navigation Specification
10	IF	GADKU	-					+5700	230	-	RNP APCH
20	TF	NETAP	-	233(220.6)		6.0		+4800	230	-	RNP APCH
10	IF	IBSAG	-					+5700	230	-	RNP APCH
20	TF	NETAP	-	053(040.6)		6.0		+4800	230	-	RNP APCH
10	IF	NETAP	-					+4800	230	-	RNP APCH
20	TF	NR503	-	323(310.6)		10.0		@3300	-	-	RNP APCH
30	TF	RW32	Y	323(310.6)	+12.0	10.2		@63	-	-3/15	RNP APCH
40	TF	NR504	Y	323(310.6)		3.0	L	-	-		RNP APCH
50	DF	IBSAG	-					+5700	-		RNP APCH
10	IF	IBSAG	-					+FL090	230	-	RNP APCH
20	HM	IBSAG	Y	053(040.6)			L	+FL090	230	-	RNP APCH

WAYPOINT LIST

RNP RWY 32		
Waypoint Identifier	Coordinates	
NR503	15°33'07.930"S	049°49'37.688"E
NETAP	15°39'39.261"S	049°57'30.412"E
GADKU	15°35'04.412"S	050°01'32.745"E
IBSAG	15°44'14.034"S	049°53'27.898"E
NR504	15°24'32.145"S	049°39'15.906"E
RW32	15°26'29.687"S	049°41'37.476"E