

Tel : +(261) 20.76.581.13  
 +(261) 33.23.370.01  
 Fax : NIL  
 AFTN : FMMMYNYX  
 E-mail : aim-fmmm@asecna.org  
 AntananarivoNOF@gmail.com  
 Web : https://aim.asecna.aero



**BUREAU NOTAM INTERNATIONAL  
 D'ANTANANARIVO**  
 B.P. 46 Ivato Aéroport Antananarivo -  
 MADAGASCAR

**AIRAC AIP SUP  
 NR 28/B/25FM  
 20 MAR 2025**

LA REUNION\* - MADAGASCAR - MAYOTTE\* - UNION DES COMORES

\* The AIC, AMDT, AIP and AIP SUP concerning these islands are published on <https://sia.aviation-civile.gouv.fr>

**FMNR**  
**NOUVELLES PROCEDURES D'APPROCHE AUX INSTRUMENTS**  
**NEW INSTRUMENT APPROACH PROCEDURES**

Effective date :	15 MAY 2025
Validity :	PERM

Les cartes qui sont relatives aux nouvelles procédures d'approche aux instruments « RNP - RWY 14 » et « RNP - RWY 32 » concernant l'aérodrome de MAROANTSETRA sont publiées dans le présent supplément d'AIP avant leur insertion dans l'AIP.

*The charts that are relative to the new instruments approach procedure « RNP - RWY 14 » and « RNP - RWY 32 » concerning MAROANTSETRA aerodrome are published in this AIP supplement before inserting them in the AIP.*

**AMEND ASECNA AIP :**

- 09AD2-FMNR-IAC-RNP14
- 09AD2-FMNR-IAC-RNP32
- 09AD2-FMNR-IAC-RNP14-DATA
- 09AD2-FMNR-IAC-RNP32-DATA

**INSERT THE FOLLOWING 5LNC IN ASECNA AIP « 00 ENR 4.4 » :**

INDICATIF CODÉ 1	COORDONNÉES 2	ROUTE ATS ou AUTRE ROUTE 3
UMTAS	15°14'14.67"S 049°26'53.42"E	IAF/IF 09AD2-FMNR-IAC-RNP14
DUVTA	15°18'49.12"S 049°22'51.01"E	IAF 09AD2-FMNR-IAC-RNP14
EXEPI	15°09'40.14"S 049°30'55.66"E	IAF 09AD2-FMNR-IAC-RNP14
NETAP	15°39'39.26"S 049°57'30.41"E	IAF/IF 09AD2-FMNR-IAC-RNP32
GADKU	15°35'04.41"S 050°01'32.75"E	IAF 09AD2-FMNR-IAC-RNP32
IBSAG	15°44'14.03"S 049°53'27.90"E	IAF 09AD2-FMNR-IAC-RNP32

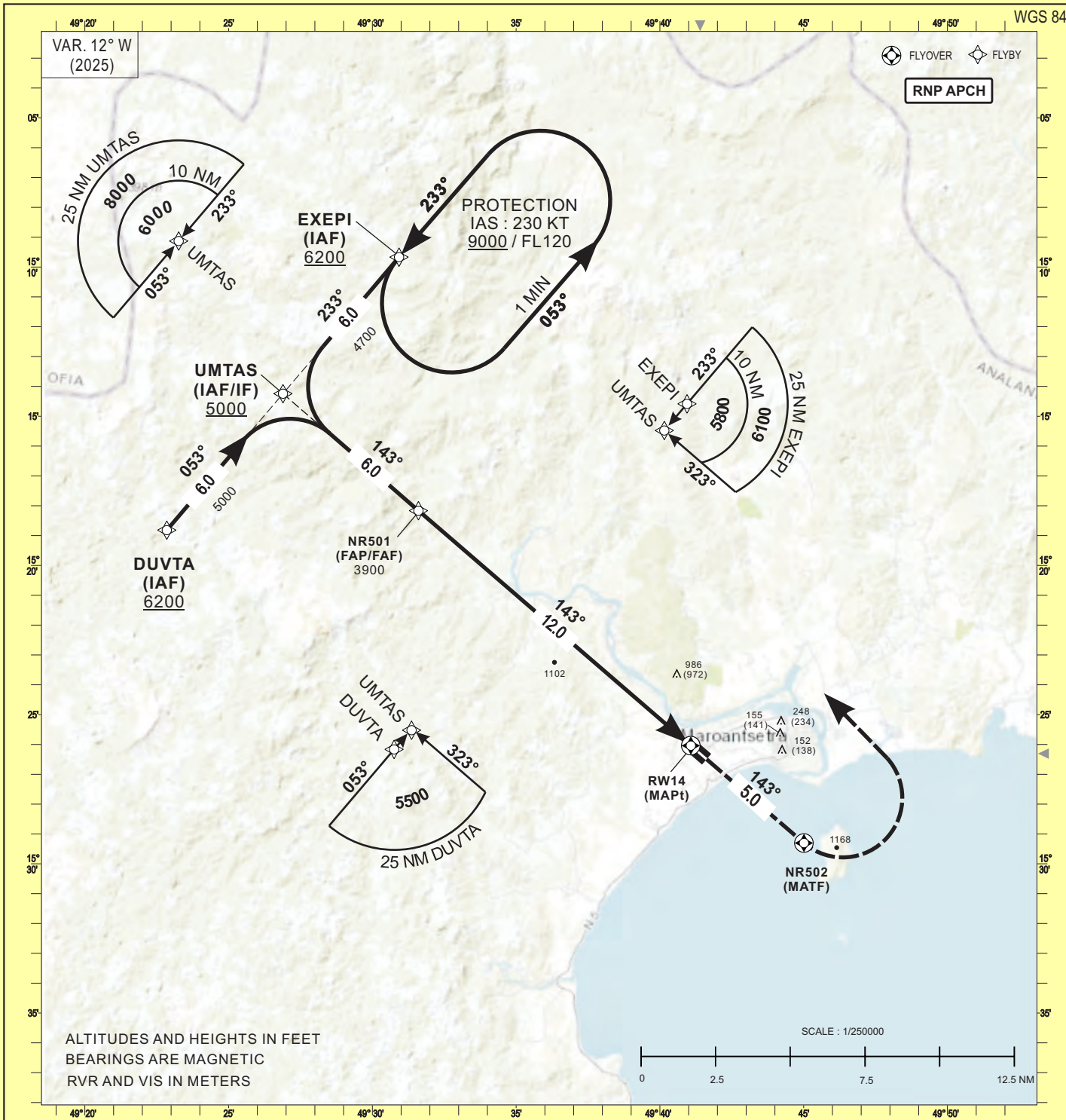
THIS AIP SUP HAS 01 PAGE AND 2 APPENDICES

INSTRUMENT  
APPROACH  
CHART-ICAO

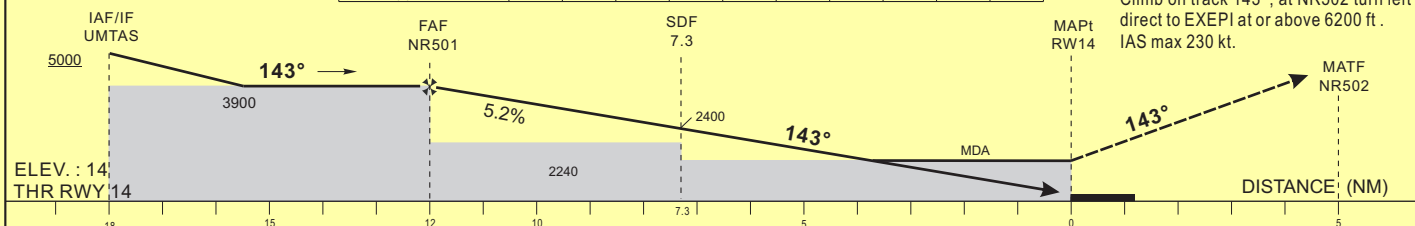
AERODROME ELEV 15 FT  
HEIGHTS RELATED TO THR RWY14 ELEV 14 FT

AFIS 119.8  
A/G 5484

MAROANTSETRA (FMNR)  
RNP - RWY 14  
(ACFT CAT A, B, C)



TRANSITION ALTITUDE : 4500	DME distance to THR (NM)	FAF	11	10	9	8	7	6	5	4
	Altitude (ft)	3900	3540	3220	2910	2590	2270	1960	1640	1330



CORRECTIONS : New version:	LNAV		CIRCLING <b>I</b>				RVR for take-off CATA - B - C : 400	
	OCA (OCH)	MDA MDH	RVR	OCA (OCH)	MDA MDH	VIS		
	A	1249 (1235)	1250 (1240)	1500	942 (927)	950 (930)		1500
	B			1500	1282 (1267)	1290 (1270)		1600
C			2000	1651 (1636)	1660 (1640)	2400		

**Notes :** - RDH = 50 feet  
 ■ Without approach light - Daytime only - OCH and MDH AAL

Timing		FAF - THR	
		12.0 NM	
KT	MIN SEC	KT	MIN SEC
90	8 Min 00	140	5 Min 09
100	7 Min 12	150	4 Min 48
110	6 Min 33	160	4 Min 30
120	6 Min 00	170	
130	5 Min 32	180	

INSTRUMENT  
APPROACH  
CHART-ICAO

AERODROME ELEV 15 FT  
HEIGHTS RELATED TO DTHR RWY14 ELEV 14 FT

AFIS 119.8  
A/G 5484

MAROANTSETRA (FMNR)  
RNP - RWY 14  
(ACFT CAT A, B, C)

**TABULAR DESCRIPTION**

**RNP RWY 14**

Serial Number	Path Descriptor	Waypoint Identifier	Fly- Over	Course °M(°T)	Magnetic Variation	Distance (NM)	Turn Direction	Altitude (ft)	Speed limit (Kt)	VPA / TCH	Navigation Specification
10	IF	DUVTA	-					+6200	230	-	RNP APCH
20	TF	UMTAS	-	053(040.6)		6.0		+5000	230	-	RNP APCH
10	IF	EXEPI	-					+6200	230	-	RNP APCH
20	TF	UMTAS	-	233(220.6)		6.0		+5000	230	-	RNP APCH
10	IF	UMTAS	-					+5000	230	-	RNP APCH
20	TF	NR501	-	143(130.6)		6.0		@3900	-	-	RNP APCH
30	TF	RW14	Y	143(130.6)	+12.0	12.0		@64	-	-3/15	RNP APCH
40	TF	NR502	Y	143(130.6)		5.0	L	-	-		RNP APCH
50	DF	EXEPI	-					+6200	-		RNP APCH
10	IF	EXEPI	-					+6200	230	-	RNP APCH
20	HM	EXEPI	Y	233(220.6)			L	+6200	230	-	RNP APCH

**WAYPOINT LIST**

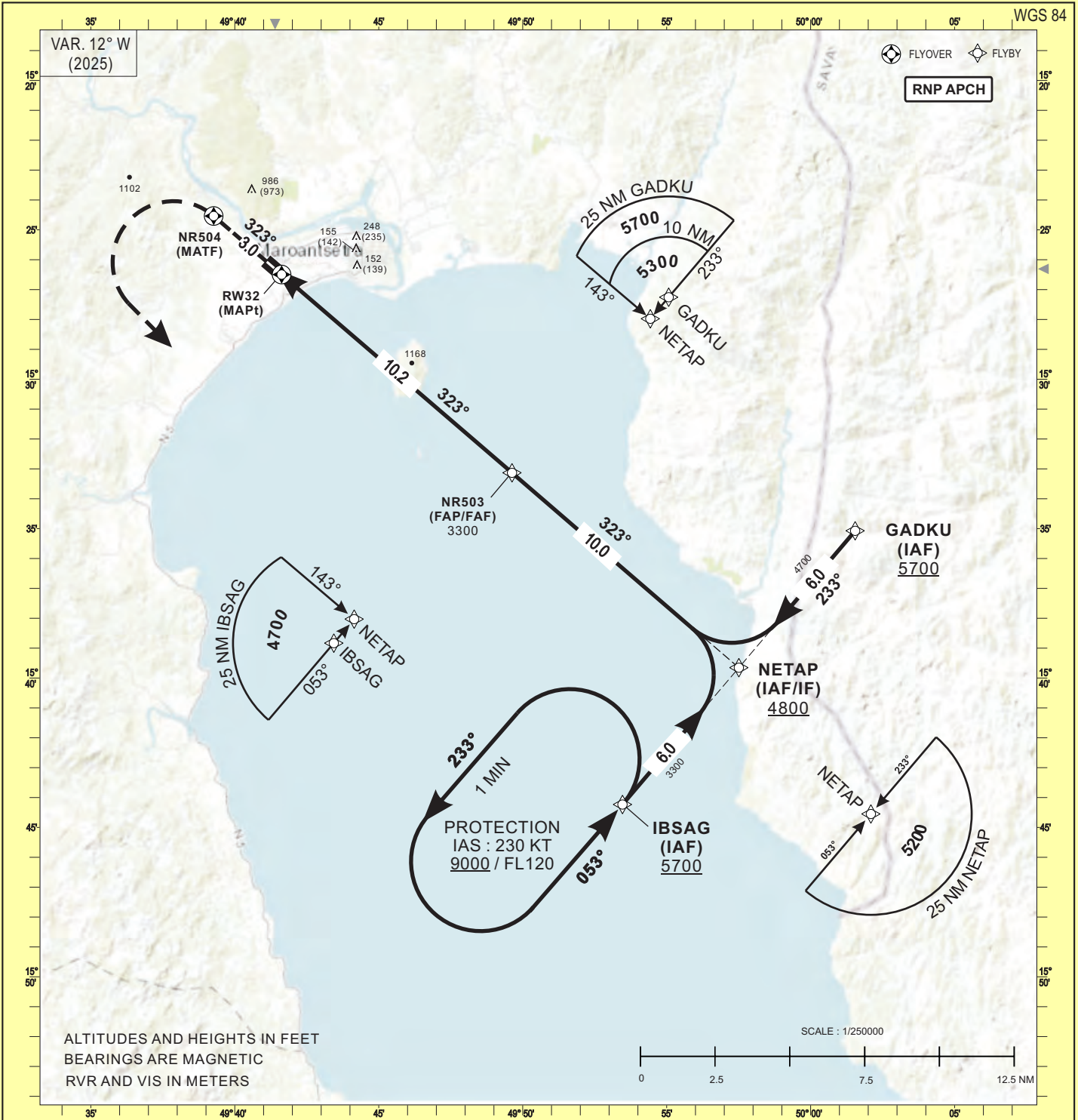
RNP RWY 14		
Waypoint Identifier	Coordinates	
NR501	15°18'09.989"S	049°31'36.144"E
UMTAS	15°14'14.666"S	049°26'53.422"E
DUVTA	15°18'49.123"S	049°22'51.008"E
EXEPI	15°09'40.135"S	049°30'55.661"E
NR502	15°29'18.118"S	049°45'00.469"E
RW14	15°26'02.262"S	049°41'04.438"E

INSTRUMENT  
APPROACH  
CHART-ICAO

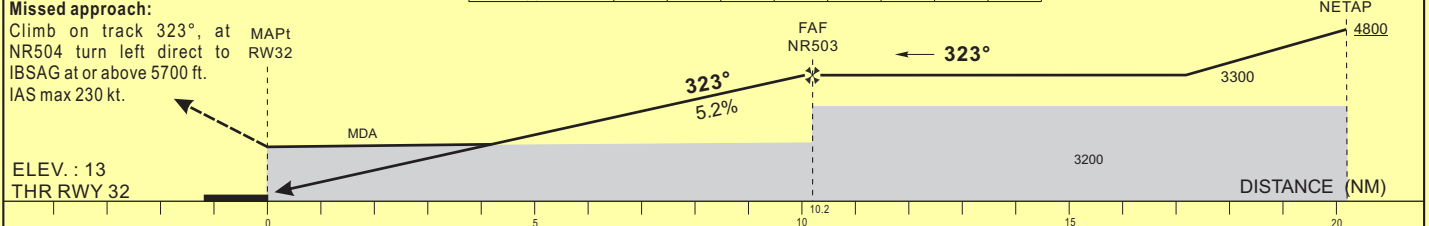
AERODROME ELEV 15 FT  
HEIGHTS RELATED TO THR RWY14 ELEV 13 FT

AFIS 119.8  
A/G 5484

MAROANTSETRA (FMNR)  
RNP - RWY32  
(ACFT CAT A, B, C)



TRANSITION ALTITUDE : 4500	DME distance to THR (NM)	5	6	7	8	9	FAF
	Altitude (ft)	1640	1960	2270	2590	2910	3300



CAT	LNAV			CIRCLING <b>I</b>			VIS	RVR for take-off CATA - B - C : 400
	OCA (OCH)	MDA MDH	RVR	OCA (OCH)	MDA MDH			
A	1385 (1372)	1390 (1380)	1500	942 (927)	950 (930)	1500		
B			1500	1282 (1267)	1290 (1270)	1600		
C			2000	1651 (1636)	1660 (1640)	2400		

Notes : - RDH = 50 feet  
 ■ Without approach light - Daytime only - OCH and MDH AAL

KT	MIN SEC		KT	MIN SEC	
	90	100		110	120
90	6	48	140	4	22
100	6	07	150	4	05
110	5	34	160	3	50
120	5	06			
130	4	42			

CORRECTIONS : New version.

**TABULAR DESCRIPTION**

**RNP RWY 32**

Serial Number	Path Descriptor	Waypoint Identifier	Fly- Over	Course °M(°T)	Magnetic Variation	Distance (NM)	Turn Direction	Altitude (ft)	Speed limit (Kt)	VPA / TCH	Navigation Specification
10	IF	GADKU	-					+5700	230	-	RNP APCH
20	TF	NETAP	-	233(220.6)		6.0		+4800	230	-	RNP APCH
10	IF	IBSAG	-					+5700	230	-	RNP APCH
20	TF	NETAP	-	053(040.6)		6.0		+4800	230	-	RNP APCH
10	IF	NETAP	-					+4800	230	-	RNP APCH
20	TF	NR503	-	323(310.6)		10.0		@3300	-	-	RNP APCH
30	TF	RW32	Y	323(310.6)	+12.0	10.2		@63	-	-3/15	RNP APCH
40	TF	NR504	Y	323(310.6)		3.0	L	-	-		RNP APCH
50	DF	IBSAG	-					+5700	-		RNP APCH
10	IF	IBSAG	-					+5700	230	-	RNP APCH
20	HM	IBSAG	Y	233(220.6)			L	+5700	230	-	RNP APCH

**WAYPOINT LIST**

RNP RWY 32		
Waypoint Identifier	Coordinates	
NR503	15°33'07.930"S	049°49'37.688"E
NETAP	15°39'39.261"S	049°57'30.412"E
GADKU	15°35'04.412"S	050°01'32.745"E
IBSAG	15°44'14.034"S	049°53'27.898"E
NR504	15°24'32.145"S	049°39'15.906"E
RW32	15°26'29.687"S	049°41'37.476"E