

Tel : +(261) 20.76.581.13  
 +(261) 33.23.370.01  
 Fax : NIL  
 AFTN : FMMYNYX  
 E-mail : aim-fmmm@asecna.org  
 AntananarivoNOF@gmail.com  
 Web : https://aim.asecna.aero



**BUREAU NOTAM INTERNATIONAL  
 D'ANTANANARIVO**  
 B.P. 46 Ivato Aéroport Antananarivo -  
 MADAGASCAR

**AIRAC AIP SUP  
 NR 44/A/24FM  
 11 SEP 2024**

LA REUNION\* - MADAGASCAR - MAYOTTE\* - UNION DES COMORES

\* The AIC, AMDT, AIP and AIP SUP concerning these islands are published on <https://sia.aviation-civile.gouv.fr>

## FMNN

### Nouvelles procédures d'approche aux instruments

#### *New instrument approach procedures*

<i>Effective date :</i>	<b>31 OCT 2024</b>
<i>Validity :</i>	<b>PERM</b>

Les cartes qui sont relatives aux nouvelles procédures d'approche aux instruments « RNP RWY 05 » et « RNP RWY 23 » concernant l'aéroport de NOSY-BE / FASCENE sont publiées dans le présent supplément d'AIP avant leur insertion dans l'AIP.

The charts that are relative to the new instruments approach procedure « RNP RWY 05 » and « RNP RWY 23 » concerning NOSY-BE / FASCENE airport are published in this AIP supplement before inserting them in the AIP.

#### AMEND ASECNA AIP :

- 09AD2-FMNN-IAC-RNP05
- 09AD2-FMNN-IAC-RNP23
- 09AD2-FMNN-IAC-RNP05-DATA
- 09AD2-FMNN-IAC-RNP23-DATA

#### INSERT THE FOLLOWING 5LNC IN ASECNA AIP SECTION « 00 ENR 4.4 » :

- APDEK
- NIBOS
- DULGA
- OKNUD
- EGTOB
- TIKUX

THIS AIP SUP HAS 01 PAGE AND 2 APPENDICES

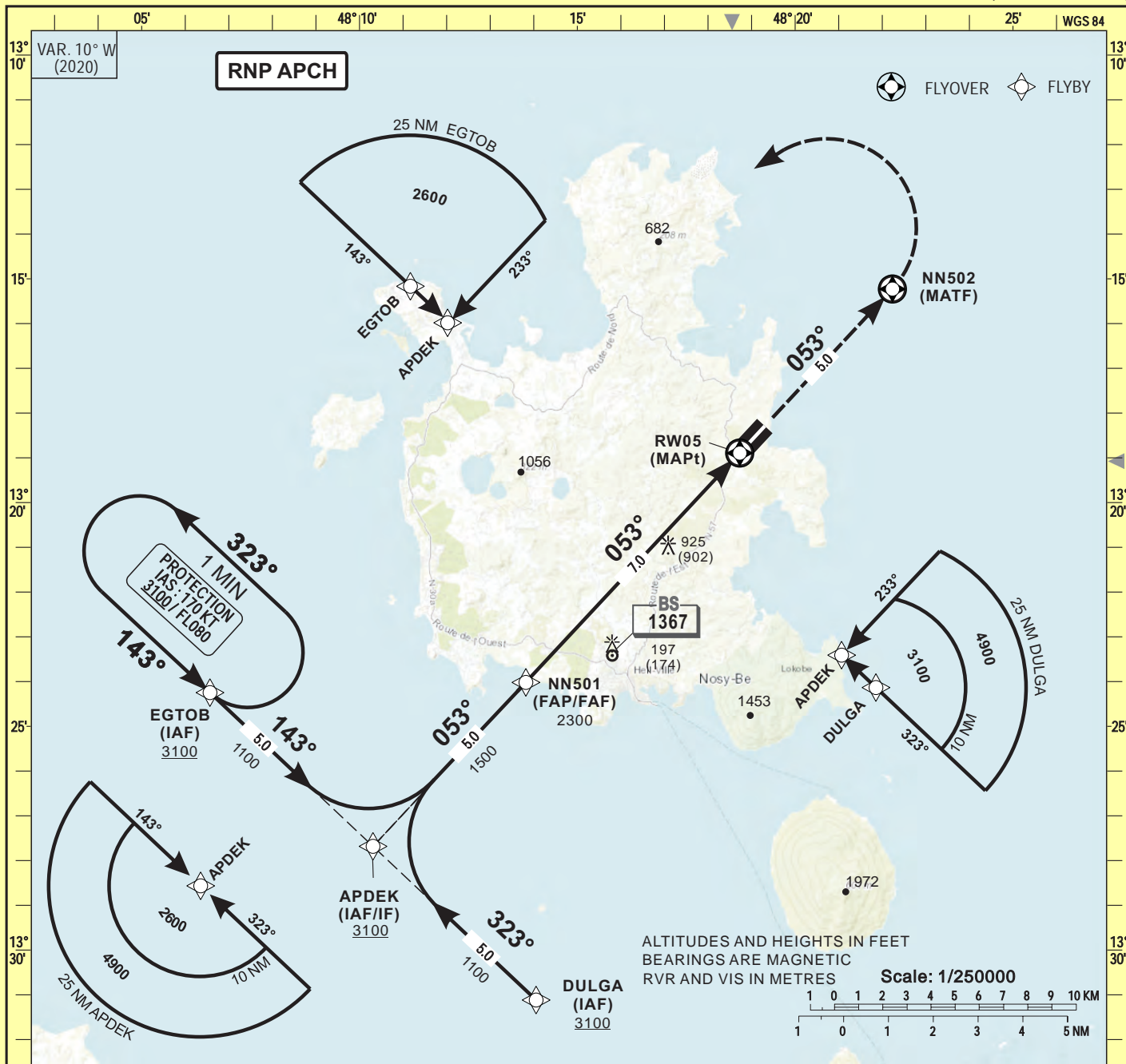
**INSTRUMENT  
APPROACH  
CHART-ICAO**

**AERODROME ELEV 39 FT**

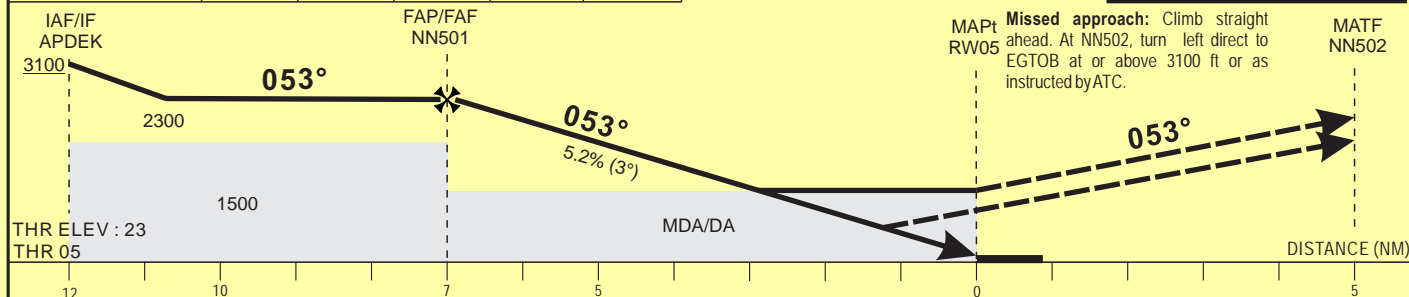
**HEIGHTS RELATED TO THR RWY05 - ELEV 23 FT**

**TWR : Nosy-Be Tower 119.3  
Nosy-Be Radio 5484**

**NOSY-BE (FMNN)  
RNP - RWY 05  
(ACFT CAT A, B)**



Distance to THR 05 (NM)		FAP/FAF	6	5	4
Altitude (ft)		2300	1990	1670	1350



CAT	LNAV/VNAV			LNAV			Circling <b>1</b>			RVR for take-off CATA - B : 400
	OCA (OCH)	MDA (MDH)	RVR	OCA (OCH)	MDA (MDH)	RVR	OCA (OCH)	MDA (MDH)	VIS	
A	1055 (1032)	1060 (1040)	1200	1172 (1149)	1180 (1150)	1500	1063 (1024)	1070 (1030)	1500	<b>Timing</b> FAF / THR 7.0 NM KT MIN . SEC 90 4 Min 40 100 4 Min 12 110 3 Min 49 120 3 Min 30 130 3 Min 14
B	1068 (1045)	1070 (1050)	1200			1500	1221 (1182)	1230 (1190)	1600	

**Notes :** **1** Daytime only - OCH and MDH AAL  
- RDH : 50  
- Minimum temperature : 10° C

CORRECTIONS : First edition

**TABULAR DESCRIPTION**

**RNP RWY 05**

Serial Number	Path Descriptor	Waypoint Identifier	Fly- Over	Course °M(°T)	Magnetic Variation	Distance (NM)	Turn Direction	Altitude (ft)	Speed limit (Kt)	VPA / TCH	Navigation Specification
10	IF	DULGA	-		-	-	-	+3100	180	-	RNP APCH
20	TF	APDEK	-	323 (313.1)	-	5.0	-	+3100	180	-	RNP APCH
10	IF	EGTOB	-	-	-	-	-	+3100	180	-	RNP APCH
20	TF	APDEK	-	143 (133.2)	-	5.0	-	+3100	180	-	RNP APCH
10	IF	APDEK	-	-	-	-	-	+3100	180	-	RNP APCH
20	TF	NN501	-	053 (043.0)	-	5.0	-	@2300	-	-	RNP APCH
30	TF	RW05	Y	053 (043.0)	+10.0	7.0	-	@73	-	-3/15	RNP APCH
40	TF	NN502	Y	053 (043.0)	-	5.0	L	-	-	-	RNP APCH
50	DF	EGTOB	-	-	-	-	-	-	-	-	RNP APCH
10	IF	EGTOB	-	-	-	-	-	+3100	170	-	RNP APCH
20	HM	EGTOB	Y	143 (133.2)	-	-	L	+3100	170	-	RNP APCH

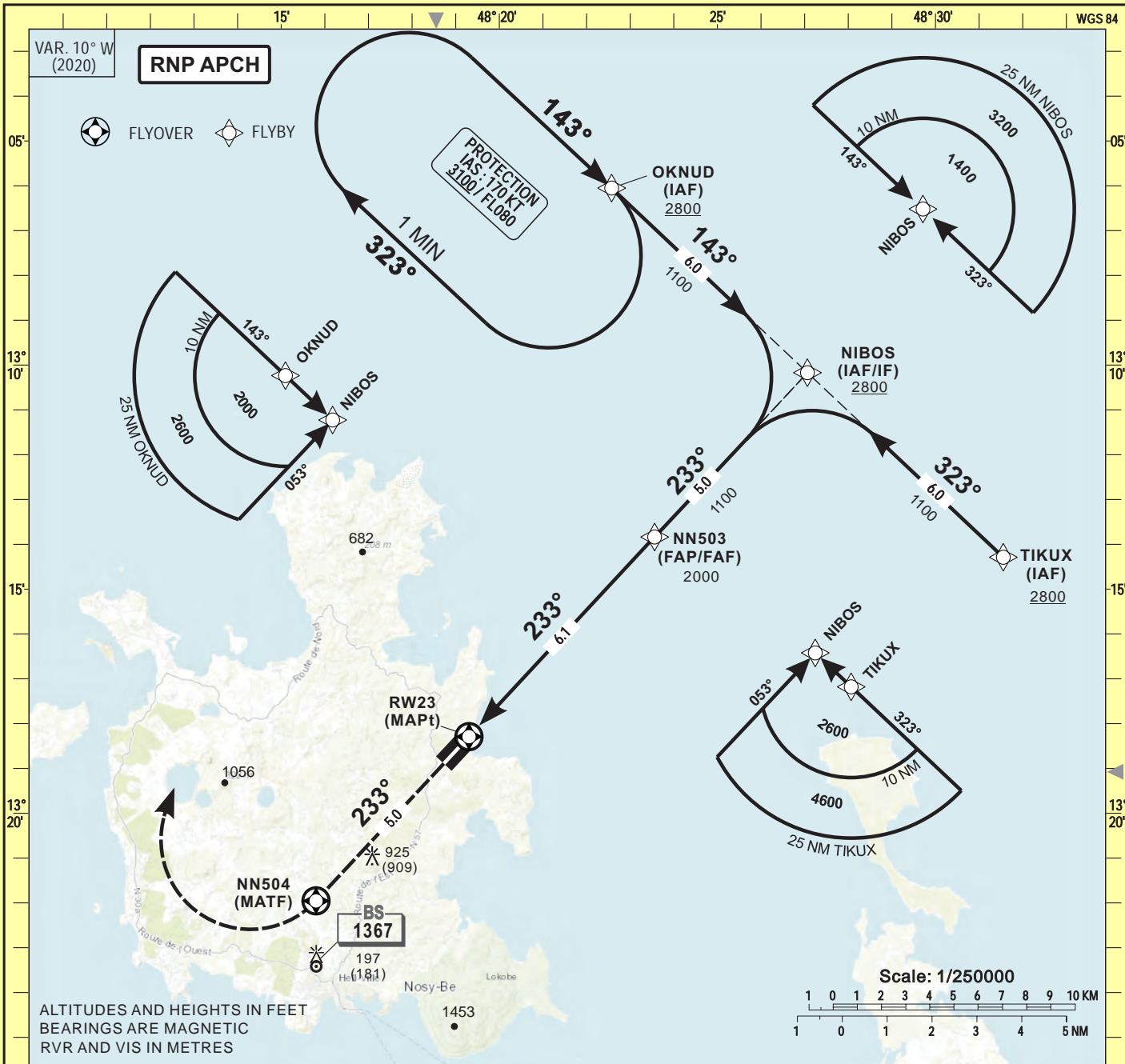
RNP RWY 05		
Waypoint Identifier	Coordinates	
NN501	13°24'01.140"S	048°13'49.201"E
APDEK	13°27'40.935"S	048°10'18.636"E
DULGA	13°31'06.993"S	048°14'03.286"E
EGTOB	13°24'14.822"S	048°06'34.092"E
NN502	13°15'13.631"S	048°22'13.932"E
RW05	13°18'53.545"S	048°18'43.621"E

**INSTRUMENT APPROACH CHART-ICAO**

**AERODROME ELEV 39 FT**  
**HEIGHTS RELATED TO THR RWY23 - ELEV 16 FT**

**TWR : Nosy-Be Tower 119.3**  
**Nosy-Be Radio 5484**

**NOSY-BE (FMNN)**  
**RNP - RWY 23**  
**(ACFT CAT A, B, C, D)**

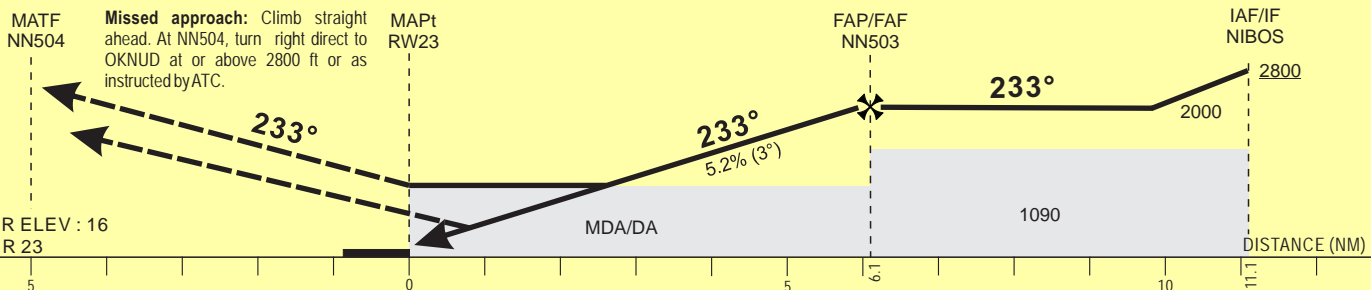


ALTITUDES AND HEIGHTS IN FEET  
 BEARINGS ARE MAGNETIC  
 RVR AND VIS IN METRES

Scale: 1/250000

**TRANSITION ALTITUDE : 3500**

2	3	4	5	FAP/FAF	Distance to THR 23 (NM)
710	1030	1340	1660	2000	



CAT	LNAV/VNAV			LNAV			Circling 1			RVR for take-off CATA - B - C - D : 400
	OCA (OCH)	MDA (MDH)	RVR	OCA (OCH)	MDA (MDH)	RVR	OCA (OCH)	MDA (MDH)	VIS	
A	470 (454)	470 (460)	1200	676 (660)	680 (660)	1500	1063 (1024)	1070 (1030)	1500	Timing FAF / THR 6.1 NM KT MIN . SEC 90 4 Min 04 140 2 Min 37 100 3 Min 40 150 2 Min 26 110 3 Min 20 160 2 Min 17 120 3 Min 03 170 2 Min 09 130 2 Min 49 180 2 Min 02
B	482 (466)	490 (470)				1500	1221 (1182)	1230 (1190)	1600	
C	502 (486)	510 (490)				2000	1490 (1451)	1490 (1460)	2400	
D	529 (513)	530 (520)				2000	1890 (1851)	1890 (1860)	3600	

**Notes :** 1 Daytime only - OCH and MDH AAL  
 - RDH : 50  
 - Minimum temperature : 10° C

CORRECTIONS : First edition

**TABULAR DESCRIPTION**

**RNP RWY 23**

Serial Number	Path Descriptor	Waypoint Identifier	Fly- Over	Course °M(°T)	Magnetic Variation	Distance (NM)	Turn Direction	Altitude (ft)	Speed limit (Kt)	VPA / TCH	Navigation Specification
10	IF	OKNUD	-	-	-	-	-	+2800	230	-	RNP APCH
20	TF	NIBOS	-	143 (133.1)	-	6.0	-	+2800	230	-	RNP APCH
10	IF	TIKUX	-	-	-	-	-	+2800	230	-	RNP APCH
20	TF	NIBOS	-	323 (313.1)	-	6.0	-	+2800	230	-	RNP APCH
10	IF	NIBOS	-	-	-	-	-	+2800	230	-	RNP APCH
20	TF	NN503	-	233 (223.1)	-	5.0	-	@2000	-	-	RNP APCH
30	TF	RW23	Y	233 (223.1)	+10.0	6.1	-	@66	-	-3/15	RNP APCH
40	TF	NN504	Y	233 (223.1)	-	5.0	R	-	-	-	RNP APCH
50	DF	OKNUD	-	-	-	-	-	-	-	-	RNP APCH
10	IF	OKNUD	-	-	-	-	-	+2800	230	-	RNP APCH
20	HM	OKNUD	Y	143 (133.1)	-	-	R	+2800	230	-	RNP APCH

RNP RWY 23		
Waypoint Identifier	Coordinates	
NN503	13°13'50.190"S	048°23'33.677"E
NIBOS	13°10'10.203"S	048°27'03.838"E
OKNUD	13°06'03.033"S	048°22'34.548"E
TIKUX	13°14'17.293"S	048°31'33.278"E
NN504	13°21'57.275"S	048°15'47.807"E
RW23	13°18'17.397"S	048°19'18.201"E