

Tel : +(261) 20.76.581.13  
 +(261) 33.23.370.01  
 Fax : NIL  
 AFTN : FMMYNYX  
 E-mail : aim-fmmm@asecna.org  
 AntananarivoNOF@gmail.com  
 Web : https://aim.asecna.aero



**BUREAU NOTAM INTERNATIONAL  
 D'ANTANANARIVO**  
 B.P. 46 Ivato Aéroport Antananarivo -  
 MADAGASCAR

**AIRAC AIP SUP  
 NR 38/A/24FM  
 07 AUG 2024**

**LA REUNION\* - MADAGASCAR - MAYOTTE\* - UNION DES COMORES**

\* The AIC, AMDT, AIP and AIP SUP concerning these islands are published on <https://sia.aviation-civile.gouv.fr>

**FMSD**

**Nouvelles procédures d'approche aux instruments**

*New instrument approach procedures*

<i>Effective date :</i>	<b>05 SEP 2024</b>
<i>Validity :</i>	<b>PERM</b>

Les cartes qui sont relatives aux nouvelles procédures d'approche aux instruments « RNP RWY 08 » et « RNP RWY 26 » concernant l'aéroport de TOLAGNARO / MARILLAC sont publiées dans le présent supplément d'AIP avant leur insertion dans l'AIP.

The charts that are relative to the new instruments approach procedure « RNP RWY 08 » and « RNP RWY 26 » concerning TOLAGNARO / MARILLAC airport are published in this AIP supplement before inserting them in the AIP.

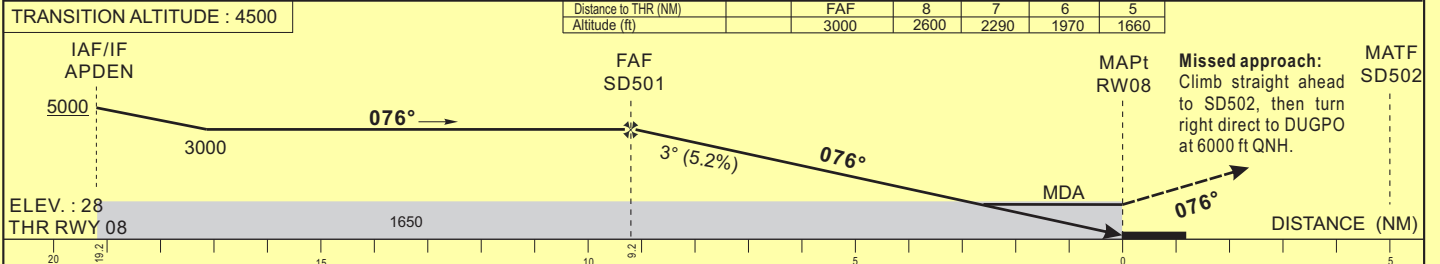
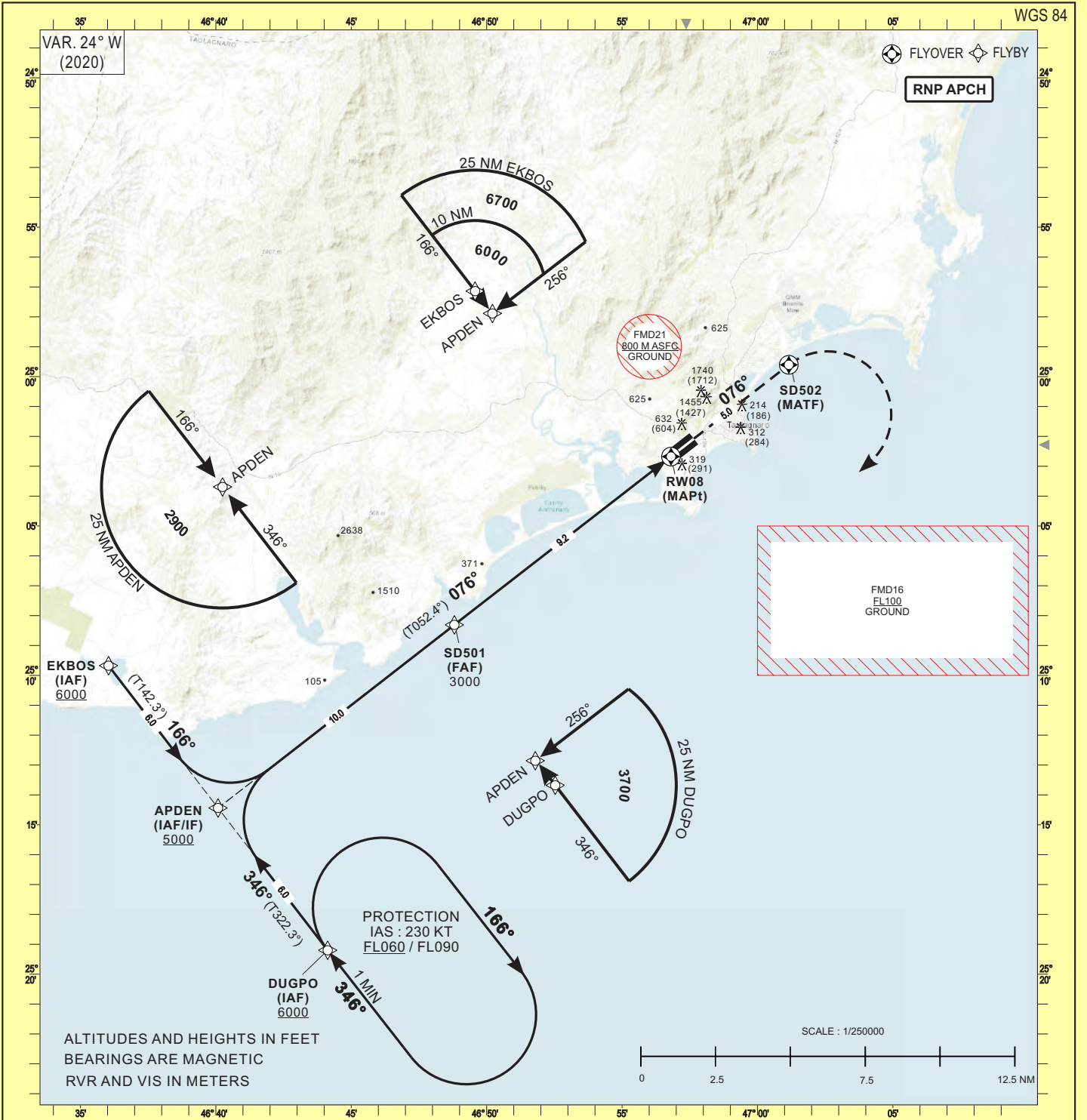
**AMEND ASECNA AIP :**

- 09AD2-FMSD-IAC-RNP08
- 09AD2-FMSD-IAC-RNP26
- 09AD2-FMSD-IAC-RNP08-DATA
- 09AD2-FMSD-IAC-RNP26-DATA

**INSERT THE FOLLOWING 5LNC IN ASECNA AIP SECTION « 00 ENR 4.4 » :**

- DUGPO
- IBMOK
- APDEN
- NEREG
- EKBOS
- TIBAT

THIS AIP SUP HAS 01 PAGE AND 2 APPENDICES



CAT	LNAV				CIRCLING <b>1</b>				RVR for take-off CATA - B - C : 400
	OCA (OCH)	MDA	MDH	RVR	OCA (OCH)	MDA	MDH	RVR	
A				1500	2036 (2005)	2040 (2010)		1500	<b>Timing</b> FAF - THR 9.2 NM KT   MIN SEC   KT   MIN SEC 90   6 Min 08   140   3 Min 57 100   5 Min 31   150   3 Min 41 110   5 Min 01   160   3 Min 27 120   4 Min 36 130   4 Min 15
B	1647 (1619)	1650 (1620)		1500	2300 (2269)	2300 (2270)	1600		
C				2000	2684 (2653)	2690 (2660)	2400		

Notes: **1** Daytime only - OCH and MDH AAL  
- RDH : 50

CORRECTIONS : New version.

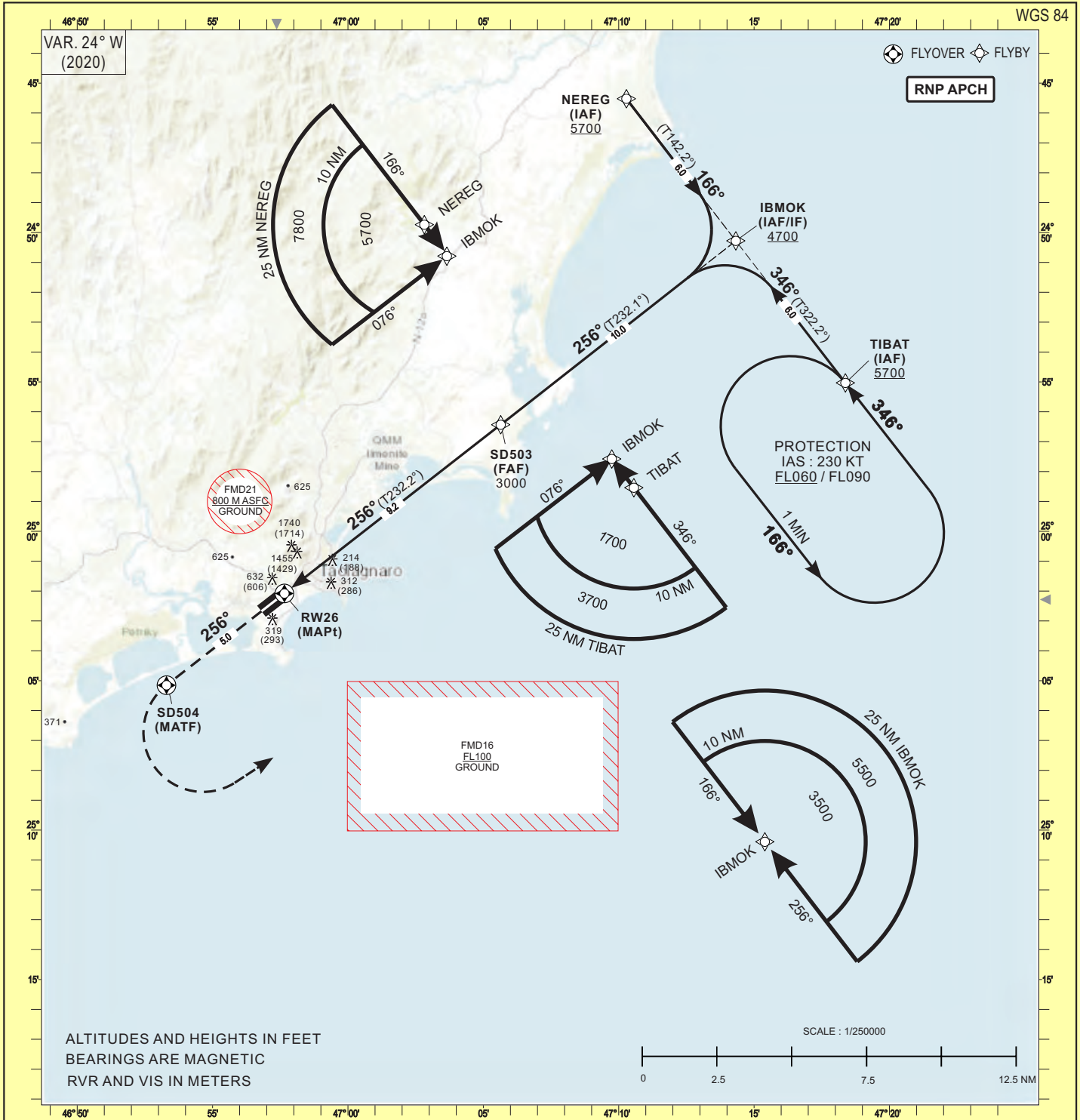
**TABULAR DESCRIPTION**

**RNP RWY 08**

Serial Number	Path Descriptor	Waypoint Identifier	Fly- Over	Course °M(°T)	Magnetic Variation	Distance (NM)	Turn Direction	Altitude (ft)	Speed limit (Kt)	VPA / TCH	Navigation Specification
10	IF	DUGPO	-					+6000	230	-	RNP APCH
20	TF	APDEN	-	346(322.3)		6.0		+5000	230	-	RNP APCH
10	IF	EKBOS	-					+6000	230	-	RNP APCH
20	TF	APDEN	-	166(142.3)		6.0		+5000	230	-	RNP APCH
10	IF	APDEN	-					+5000	230	-	RNP APCH
20	TF	SD501	-	076(052.4)		10.0		@3000	-	-	RNP APCH
30	TF	RW08	Y	076(052.4)	+24.0	9.2		@78	-	-3/15	RNP APCH
40	TF	SD502	Y	076(052.4)		5.0		-	-	-	RNP APCH
50	DF	DUGPO					R	+6000	230	-	RNP APCH
10	IF	DUGPO	-					+6000	230	-	RNP APCH
20	HM	DUGPO	Y	346(322.3)			R	+6000	230	-	RNP APCH

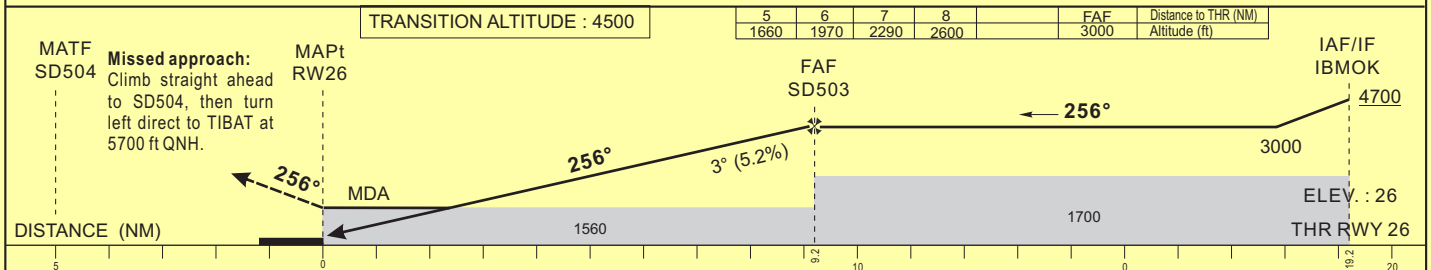
**WAYPOINT LIST**

RNP RWY 08		
Waypoint Identifier	Coordinates	
DUGPO	25°19'12.018"S	046°44'07.765"E
APDEN	25°14'26.332"S	046°40'04.832"E
EKBOS	25°09'40.531"S	046°36'02.215"E
SD501	25°08'18.575"S	046°48'48.452"E
RW08	25°02'40.569"S	046°56'48.297"E
SD502	24°59'36.259"S	047°01'09.382"E



ALTITUDES AND HEIGHTS IN FEET  
BEARINGS ARE MAGNETIC  
RVR AND VIS IN METERS

SCALE : 1/250000



CAT	LNAV			CIRCLING <b>I</b>			RVR for take-off CATA - B - C : 400
	OCA (OCH)	MDA MDH	RVR	OCA (OCH)	MDA MDH	RVR	
A			1500	2036 (2005)	2040 (2010)	1500	<b>Timing</b> FAF - THR 9.2 NM 90 6 Min 08 140 3 Min 57 100 5 Min 31 150 3 Min 41 110 5 Min 01 160 3 Min 27 120 4 Min 36 130 4 Min 15
B	1553 (1527)	1560 (1530)	1500	2300 (2269)	2300 (2270)	1600	
C			2000	2684 (2653)	2690 (2660)	2400	

**Notes:** **I** Daytime only - OCH and MDH AAL  
- RDH : 50

CORRECTIONS : New version.

**TABULAR DESCRIPTION**

**RNP RWY 26**

Serial Number	Path Descriptor	Waypoint Identifier	Fly- Over	Course °M(°T)	Magnetic Variation	Distance (NM)	Turn Direction	Altitude (ft)	Speed limit (Kt)	VPA / TCH	Navigation Specification
10	IF	NEREG	-					+5700	230	-	RNP APCH
20	TF	IBMOK	-	166(142.2)		6.0		+4700	230	-	RNP APCH
10	IF	TIBAT	-					+5700	230	-	RNP APCH
20	TF	IBMOK	-	346(322.2)		6.0		+4700	230	-	RNP APCH
10	IF	IBMOK	-					+4700	230	-	RNP APCH
20	TF	SD503	-	256(232.1)		10.0		@3000	-	-	RNP APCH
30	TF	RW26	Y	256(232.1)	+24.0	9.2		@76	-	-3/15	RNP APCH
40	TF	SD504	Y	256(232.1)		5.0		-	-	-	RNP APCH
50	DF	TIBAT					L	+5700	-	-	RNP APCH
10	IF	TIBAT	-					+5700	230	-	RNP APCH
20	HM	TIBAT	Y	346(322.2)			L	+5700	230	-	RNP APCH

**WAYPOINT LIST**

RNP RWY 26		
Waypoint Identifier	Coordinates	
IBMOK	24°50'16.771"S	047°14'19.500"E
NEREG	24°45'31.414"S	047°10'17.022"E
TIBAT	24°55'02.015"S	047°18'22.287"E
SD503	24°56'26.038"S	047°05'38.423"E
RW26	25°02'04.764"S	046°57'39.048"E
SD504	25°05'08.970"S	046°53'17.789"E