

Phone : +(261) 20.22.581.13
 +(261) 20.22.581.14
 +(261) 33.23.370.01
 Fax : +(261) 20.22.581.15

AFTN : FMMMYNYX

E-mail : bnifmmi@asecna.org
 AntananarivoNOF@gmail.com

Web : www.ais-asecna.org



**BUREAU NOTAM INTERNATIONAL
 D'ANTANANARIVO**
 B.P. 46 Ivato Aéroport Antananarivo -
 MADAGASCAR

**AIP SUP
 NR 67/A/17FM
 18 DEC 2017**

MADAGASCAR - UNION DES COMORES

FMCH

CORRECTION OF THE AIP SUP 49/A/17FM

Mise en vigueur / Effective date :	18 DEC 2017
Validité / Validity :	PERM

Deux cartes annexées au supplément d'AIP n°49/A/17FM ont été corrigées. Ces cartes sont :

Two charts annexed to the AIP supplement n°49/A/17FM have been corrected. These charts are :

IAC ID	IAP NAME	AIP SUP REFERENCE
1601 D-1D	RNAV(GNSS) - RWY 02	APPENDIX 1/2 - PAGE 5/6
1601 D-1E	ILS X or LOC X RWY 02	APPENDIX 1/2 - PAGE 6/6

La correction porte essentiellement sur le MSA et l'indication de secteur du cisaillement de vent.

The correction concerns mainly the MSA and the wind shear sector indication.

CORRECT AIP SUP NR 49/A/17FM

THIS AIP SUP HAS 1 PAGE AND 2 APPENDICES

INSTRUMENT
APPROACH CHART-ICAO
Categories A-B-C-D

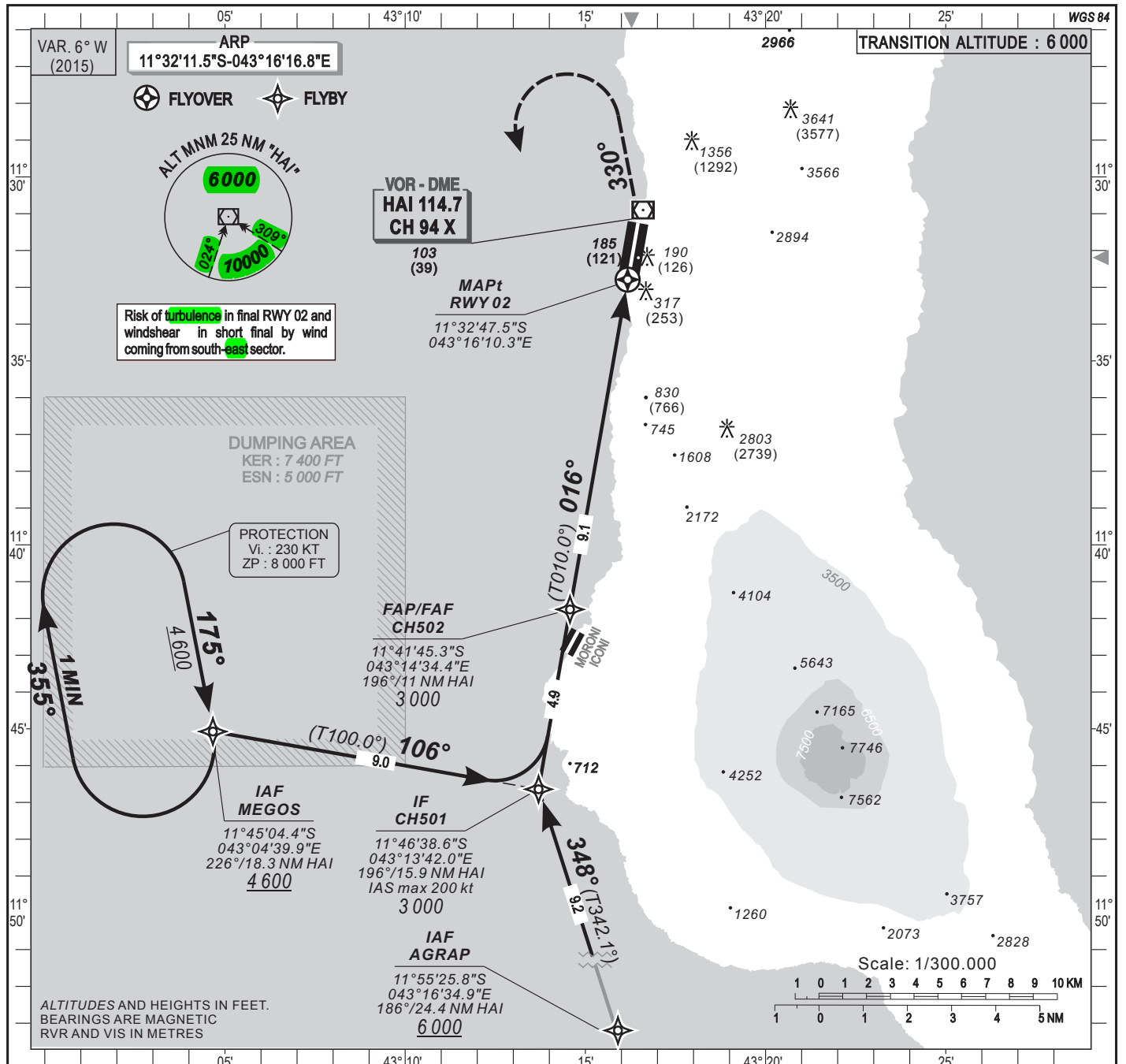
ELEV. : 93
THR : 64

MORONI Approach : 119.7
MORONI Tower : 118.1

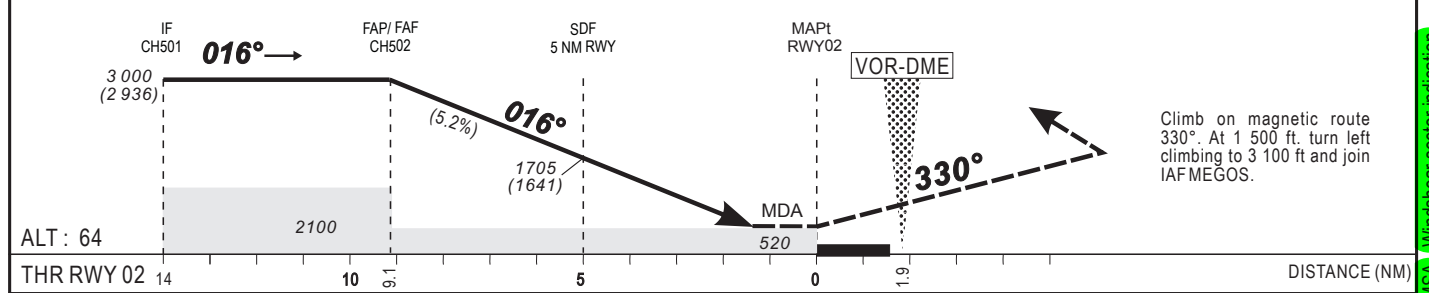
MORONI / Prince SAID IBRAHIM (FMCH)

RNAV_(GNSS)- RWY 02

HEIGHTS RELATED TO THR 02 ELEVATION



Distance to THR02 (NM)	FAP/FAF	9	8	7	6	5	4	3	2
Altitude (ft)	3 000	2 980	2 660	2 345	2 025	1 705	1 390	1 070	750



CAT	LNAV				LNAV/VNAV				RVR for take-off	
	OCA (OCH)	MDA MDH	RVR(1)	RVR(2)	OCA (OCH)	DA MDH	RVR(1)	RVR(2)	CATA - B - C : 400	CAT D : 400
A	517 (453)	520 (460)	1000	1500	436 (372)	440 (380)	900	1500		
B	517 (453)	520 (460)	1200	1500	436 (372)	440 (380)	1000	1500		
C	517 (453)	520 (460)	1200	2000	436 (372)	440 (380)	1000	1800		
D	517 (453)	520 (460)	1600	2000	436 (372)	440 (380)	1400	2000		

Notes: - (1) With approach lights
- (2) Without approach lights
- Climbing sectors for take-off : between radials 293° and 189° HAI.
- Minimum temperature: 10°.

PROCEDURE TO USED ACCORDING TO AIC NR 02 / A / 2002 DAKAR - 21 MARCH 2002

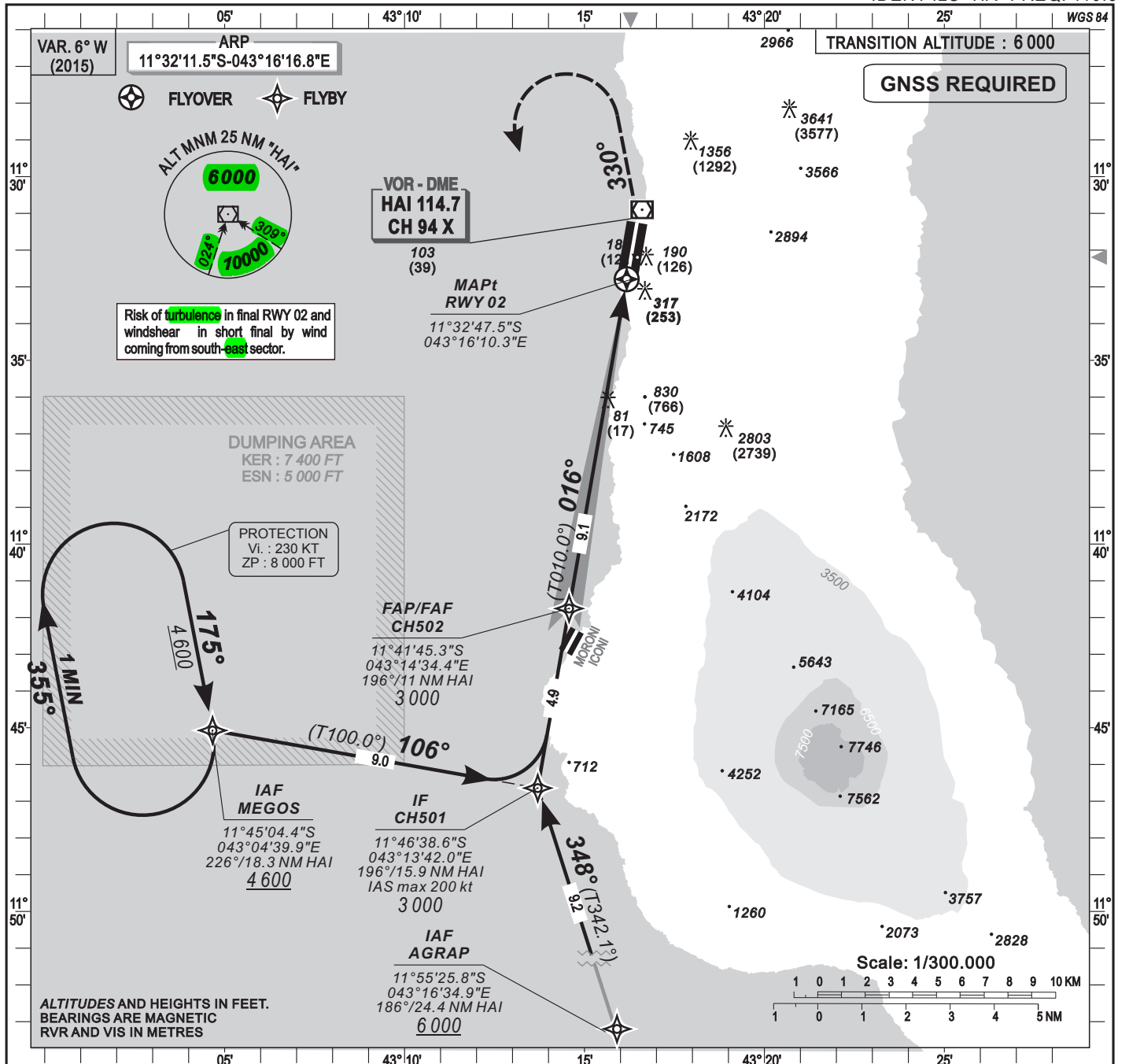
Timing		FAF / THR 9.1 NM	
KT	MIN . SEC	KT	MIN . SEC
100	5 Min 28	150	3 Min 38
110	4 Min 58	160	3 Min 25
120	4 Min 33	170	3 Min 13
130	4 Min 12	180	3 Min 02

CORRECTIONS : ICAO format - MSA Windshear sector indication

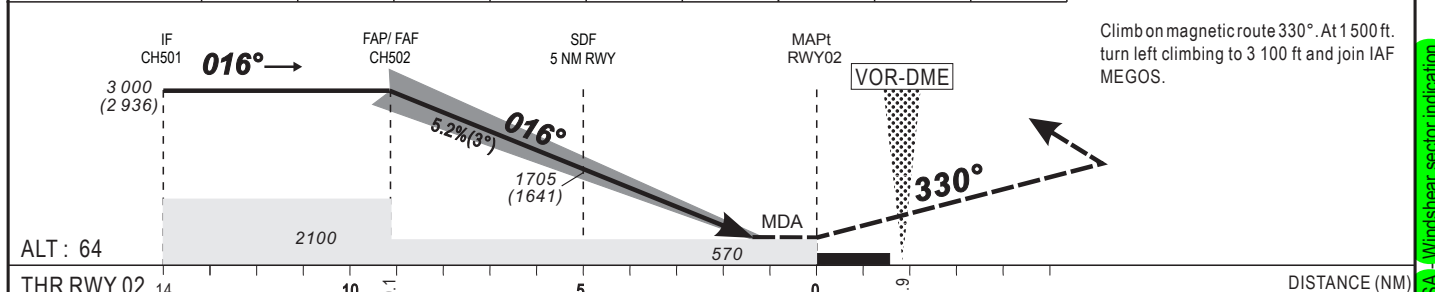
INSTRUMENT APPROACH CHART-ICAO
Categories A-B-C-D

ELEV. : 93 MORONI Approach : 119.7
THR : 64 MORONI Tower : 118.1
HEIGHTS RELATED TO THR 02 ELEVATION

MORONI / Prince SAID IBRAHIM (FMCH)
ILS X or LOC X RWY 02
IDENT ILS "HA" FREQ. 110.3



Distance to THR02 (NM)	FAP/FAF	9	8	7	6	5	4	3	2
Altitude (ft)	3 000	2 980	2 660	2 345	2 025	1 705	1 390	1 070	750



CAT	Cat. 1				LOC				RVR for take-off CAT A - B - C : 400 CAT D : 400
	OCA (OCH)	DA	DH	RVR(1) RVR(2)	OCA (OCH)	MDA MDH	RVR(1) RVR(2)		
A	320 (256)	320 (260)	650	1200	563 (499)	570 (500)	1000 1500		
B	332 (268)	340 (270)	650	1200	563 (499)	570 (500)	1200 1500		
C	340 (276)	340 (280)	650	1200	563 (499)	570 (500)	1200 2000		
D	351 (287)	360 (290)	650	1200	563 (499)	570 (500)	1600 2000		

Notes: - (1) With approach lights - (2) Without approach lights ;
- Climbing sectors for take-off : between radials 293° and 189° HAI ;
- RDH: 50 ft.

PROCEDURE TO USED ACCORDING TO AIC NR 02 / A / 2002 DAKAR - 21 MARCH 2002

Timing FAF / THR 9.1 NM					
KT	MIN.	SEC	KT	MIN.	SEC
90	6	Min 04	140	3	Min 54
100	5	Min 28	150	3	Min 38
110	4	Min 58	160	3	Min 25
120	4	Min 33	170	3	Min 13
130	4	Min 12	180	3	Min 02

FORMULAIRE D'ENQUÊTE DE SATISFACTION CLIENTS
CUSTOMERS SATISFACTION SURVEY FORM

F2 - ANTANANARIVO NOF

Les clients sont priés de participer aux enquêtes en retournant le formulaire rempli au BNI Antananarivo de préférence par email.

The customers are kindly requested to participate to the surveys by sending back the filled form to Antananarivo NOF by email in preference.

INFORMATION SUR LE CLIENT / CUSTOMER INFORMATION :

Date : _____

Name : _____ Organization : _____

Position : _____ Email : _____

NIVEAU DE SATISFACTION / SATISFACTION LEVEL :

Niveau /Level	Smiley	Meaning / Signification	Pourcentage / Percentage
1		non satisfaisant / not satisfactory	0...20%
2		peu satisfaisant / somewhat satisfactory	21...40%
3		satisfaisant / satisfactory	41...60%
4		très satisfaisant / very satisfactory	61...80%
5		entièrement satisfaisant / Entirely satisfactory	81...100%

2 AIP SUP 67/A/17FM



2.1 Suffisance des informations : *Information sufficiency :*

2.2 Exactitude des informations : *Information accuracy :*

2.3 Cohérence des informations : *Information coherence :*

2.4 Exhaustivité des renvois à l'AIP : *Comprehensiveness of the AIP references :*

2.5 Observations / Remarks