

Phone : +(261) 20.22.581.13
+(261) 20.22.581.14
+(261) 33.23.370.01
Fax : +(261) 20.22.581.15

AFTN : FMMMYNYX
E-mail : bnitana@asecna.org
AntananarivoNOF@gmail.com
Web : www.ais-asecna.org



**BUREAU NOTAM INTERNATIONAL
D'ANTANANARIVO**
B.P. 46 Ivato Aéroport Antananarivo -
MADAGASCAR

**AIRAC AIP SUP
NR 49/A/17FM
09 NOV 2017**

MADAGASCAR - UNION DES COMORES

FMCH IAC UPDATE

Mise en vigueur / Effective date : 07 DEC 2017

Validité / Validity : PERM

Ont été mises à jour les cartes d'approche aux instruments ci-après :

-) '1601 G-2' : ILS Z or LOC Z RWY 02
-) '1601 G-3' : ILS Y or LOC Y RWY 02
-) '1601 H-5' : VOR - RWY 02
-) '1601 H-6' : VPT- RWY 20
-) '1601 D-1D' : RNAV(GNSS) - RWY 02
-) '1601 D-1E' : ILS X or LOC X RWY 02

Ces cartes concernent l'aéroport de MORONI/Prince Saïd Ibrahim.

Have been updated the following Instrument approach charts :

-) '1601 G-2' : ILS Z or LOC Z RWY 02
-) '1601 G-3' : ILS Y or LOC Y RWY 02
-) '1601 H-5' : VOR - RWY 02
-) '1601 H-6' : VPT- RWY 20
-) '1601 D-1D' : RNAV(GNSS) - RWY 02
-) '1601 D-1E' : ILS X or LOC X RWY 02

These chart concerns the MORONI/Prince Saïd Ibrahim airport.

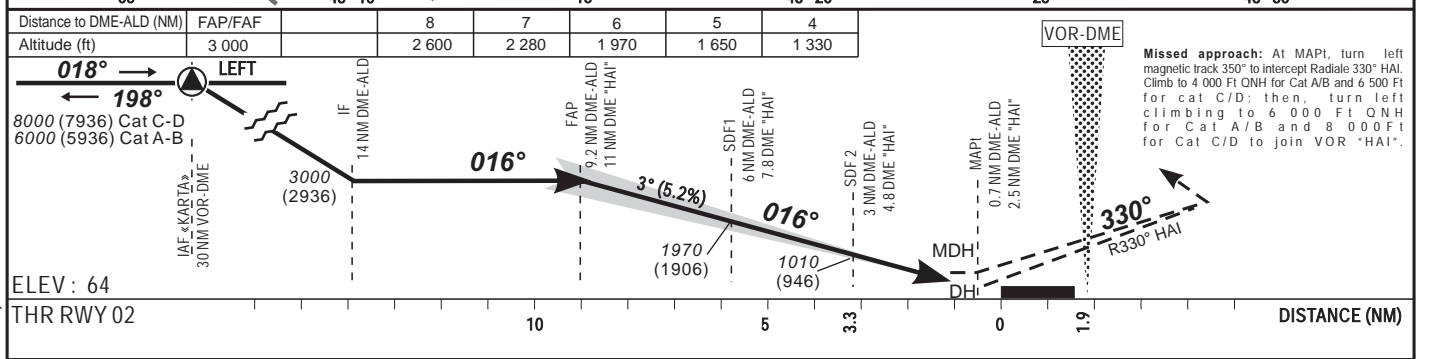
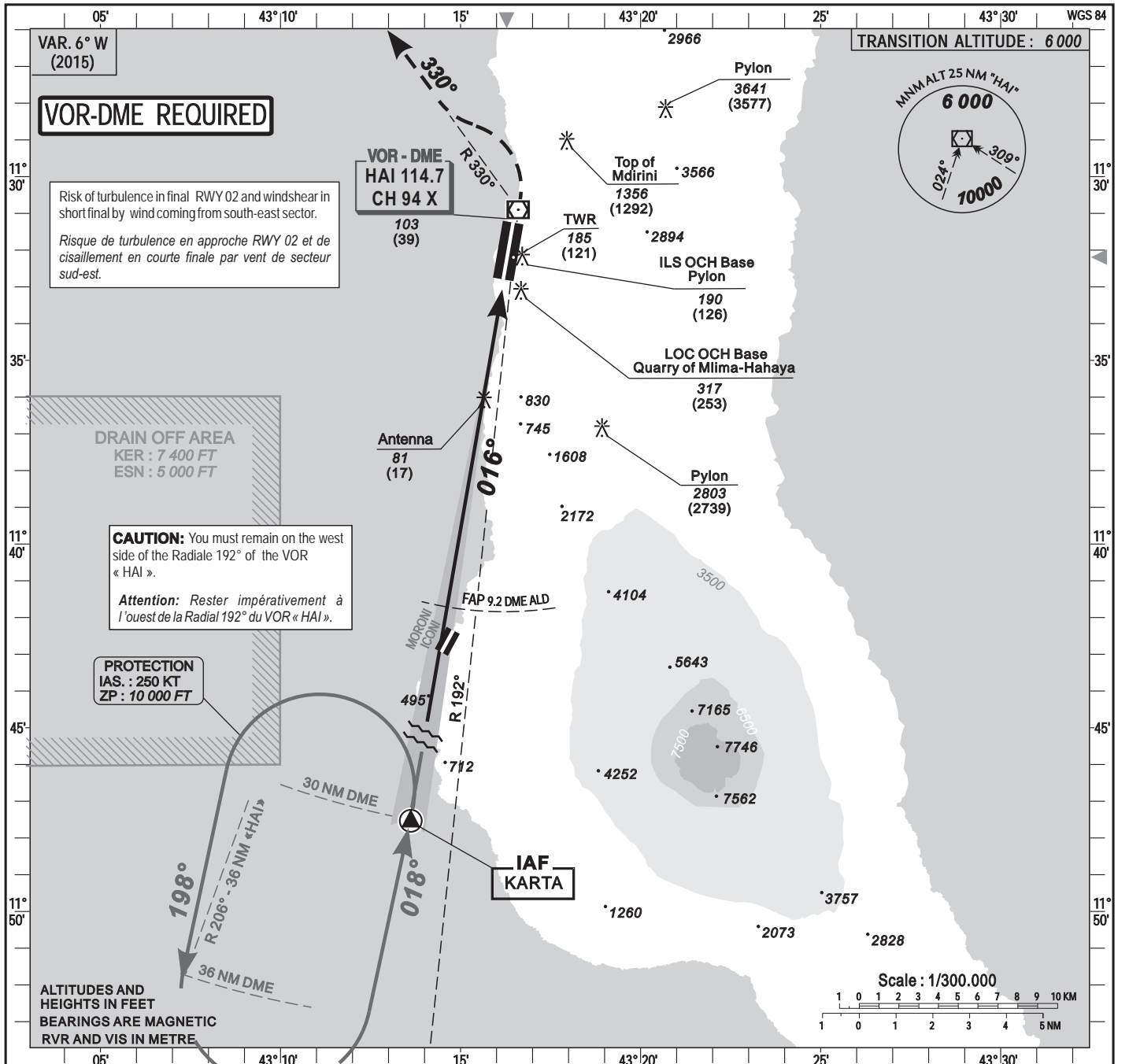
MODIFY ASECNA AIP ATLAS

THIS AIP SUP HAS 1 PAGE AND 2 APPENDICES

INSTRUMENT APPROACH CHART-ICAO Categories A-B-C-D

ELEV.: 93 MORONI Approach : 119.7
 THR.: 64 MORONI Tower : 118.1
 HEIGHTS RELATED TO RWY02 THRESHOLD ELEVATION

MORONI / Prince SAID IBRAHIM (FMCH)
 ILS Z or LOC Z RWY 02
 IDENT ILS «HA» FREQ 110.3



CAT	Cat.1				LOC			RVR for take-off: CAT A - B - C : 400 CAT D : 400	
	OCA (OCH)	DA	DH	RVR	OCA (OCH)	MDA	MDH	RVR	
A	320 (256)	320 (260)	1200	563 (499)	570 (500)	1500			
B	332 (268)	340 (270)	1200	563 (499)	570 (500)	1500			
C	340 (276)	340 (280)	1200	563 (499)	570 (500)	2000			
D	351 (287)	360 (290)	1200	563 (499)	570 (500)	2000			

Notes:

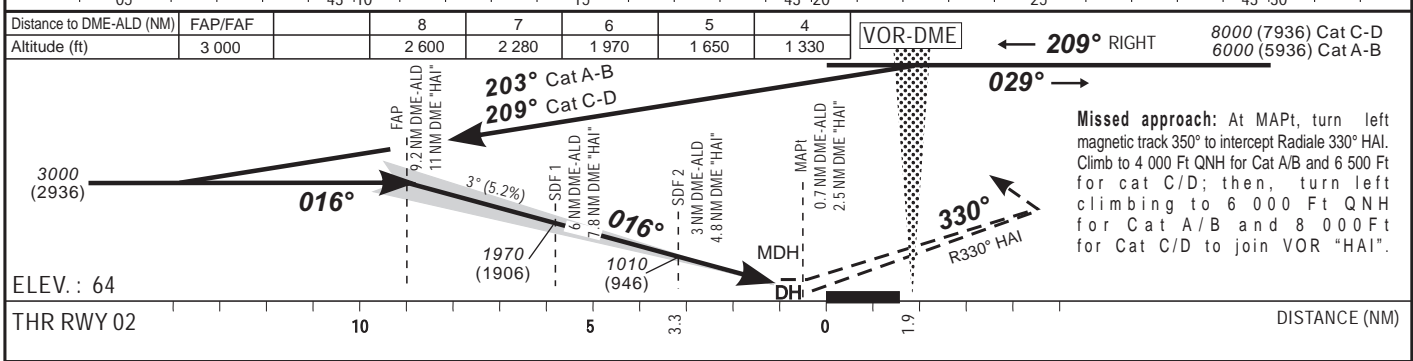
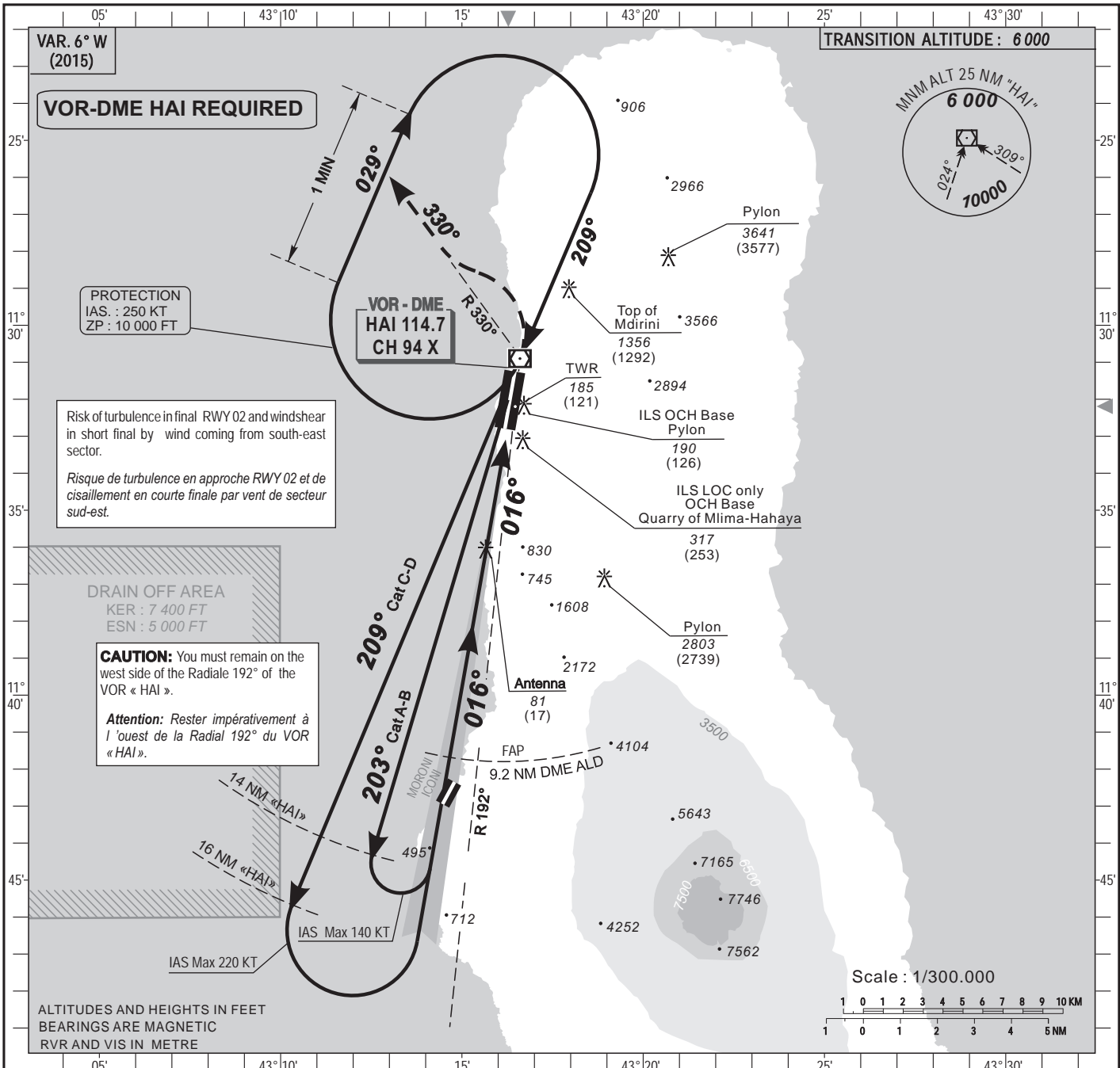
KT	Timing		FAP / Seuil 9 NM	
	MIN	SEC	KT	MIN SEC
90	6	00	140	3 Min 51
100	5	24	150	3 Min 36
110	4	55	160	3 Min 22
120	4	30	170	3 Min 11
130	4	09	180	3 Min 00

CORRECTIONS : Cat. 1 minima (DA/DH) - Distance/Altitude table - ICAO format

INSTRUMENT
APPROACH CHART-ICAO
Categories A-B-C-D

ELEV.: 93 MORONI Approach : 119.7
THR.: 64 MORONI Tower : 118.1
HEIGHTS RELATED TO RWY 02 THRESHOLD ELEVATION

MORONI / Prince SAID IBRAHIM (FMCH)
ILS Y or LOC Y RWY 02
IDENT ILS «HA» FREQ 110.3



CAT	Cat.1				LOC				RVR for take-off			
	OCA (OCH)	DA	DH	RVR	OCA (OCH)	MDA	MDH	RVR	CAT A - B - C : 400 CAT D : 400			
A	320 (256)	320 (260)	1200	563 (499)	570 (500)	1500						
B	332 (268)	340 (270)	1200	563 (499)	570 (500)	1500						
C	340 (276)	340 (280)	1200	563 (499)	570 (500)	2000						
D	351 (287)	360 (290)	1200	563 (499)	570 (500)	2000						

Timing		FAP / THR 9 NM	
KT	MIN SEC	KT	MIN SEC
90	6 Min 00	140	3 Min 51
100	5 Min 24	150	3 Min 36
110	4 Min 55	160	3 Min 22
120	4 Min 30	170	3 Min 11
130	4 Min 09	180	3 Min 00

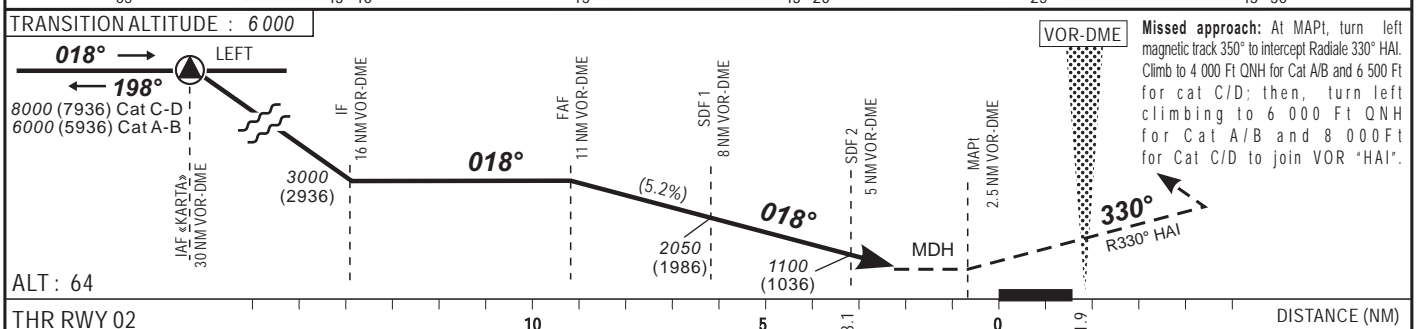
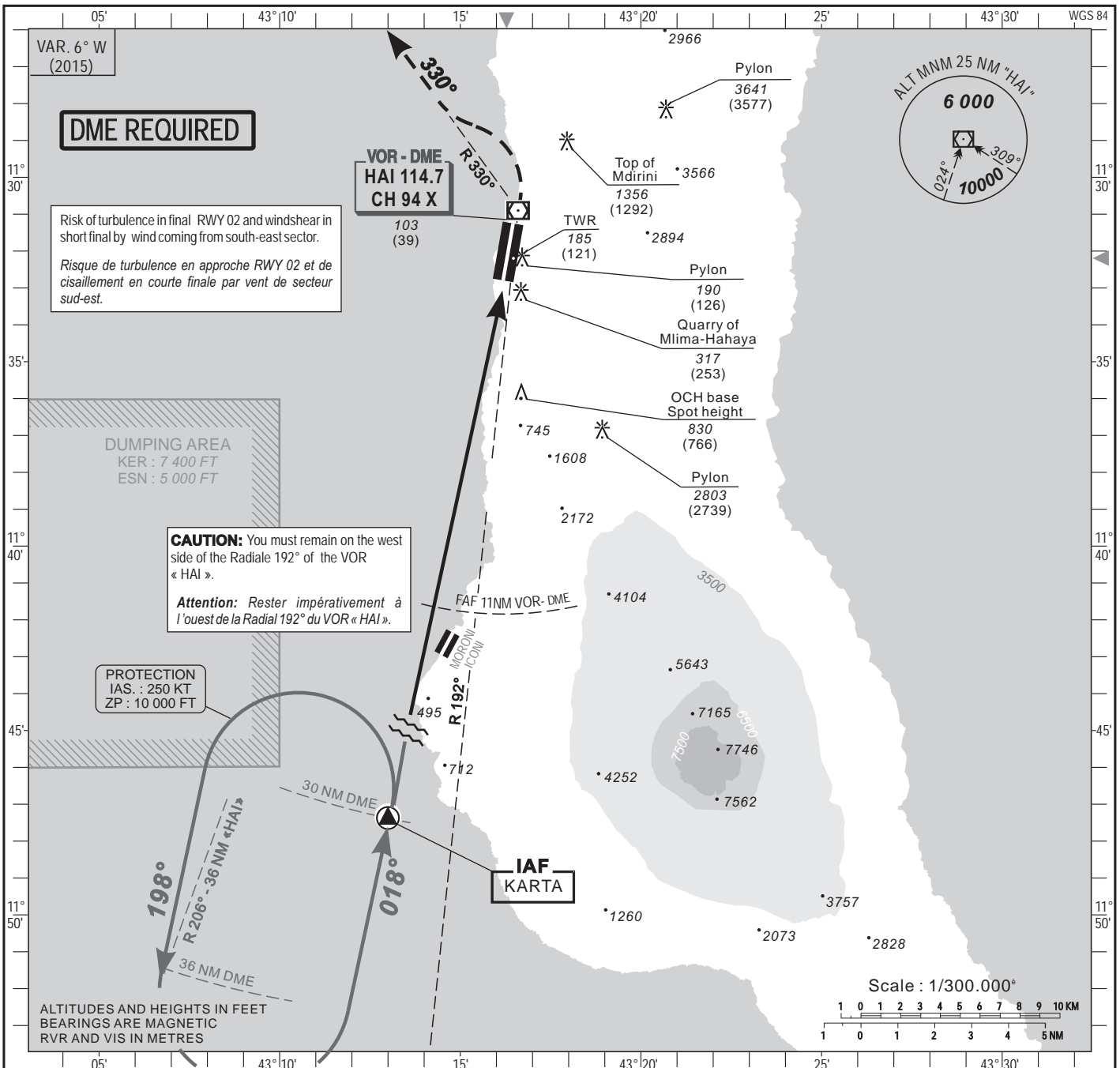
Notes :

CORRECTIONS : IF indication deletion - Cat. 1 minima (DA/DH) - Distance/Altitude table - ICAO format

INSTRUMENT
APPROACH CHART-ICAO
Categories A-B-C-D

ELEV : 93 MORONI Approach : 119.7
THR : 64 MORONI Tower : 118.1
HEIGHTS RELATED TO RWY 02 THRESHOLD ELEVATION

MORONI / Prince SAID IBRAHIM (FMCH)
VOR - RWY 02
IDENT VOR «HAI» FREQ 114.7



Missed approach: At MAPI, turn left magnetic track 350° to intercept Radiale 330° HAI. Climb to 4 000 Ft QNH for Cat A/B and 6 500 Ft for cat C/D; then, turn left climbing to 6 000 Ft QNH for Cat A/B and 8 000 Ft for Cat C/D to join VOR «HAI».

CAT	VOR-DME			RVR for take-off	
	OCA (OCH)	MDA MDH	RVR	CAT A - B - C	CAT D
A	1076 (1012)	1080 (1020)	1500	400	400
B	1076 (1012)	1080 (1020)	1500		
C	1076 (1012)	1080 (1020)	2000		
D	1076 (1012)	1080 (1020)	2000		

Timing		FAF / THR 9 NM	
KT	MIN SEC	KT	MIN SEC
90	6 Min 00	140	3 Min 51
100	5 Min 24	150	3 Min 36
110	4 Min 55	160	3 Min 22
120	4 Min 30	170	3 Min 11
130	4 Min 09	180	3 Min 00

Notes :

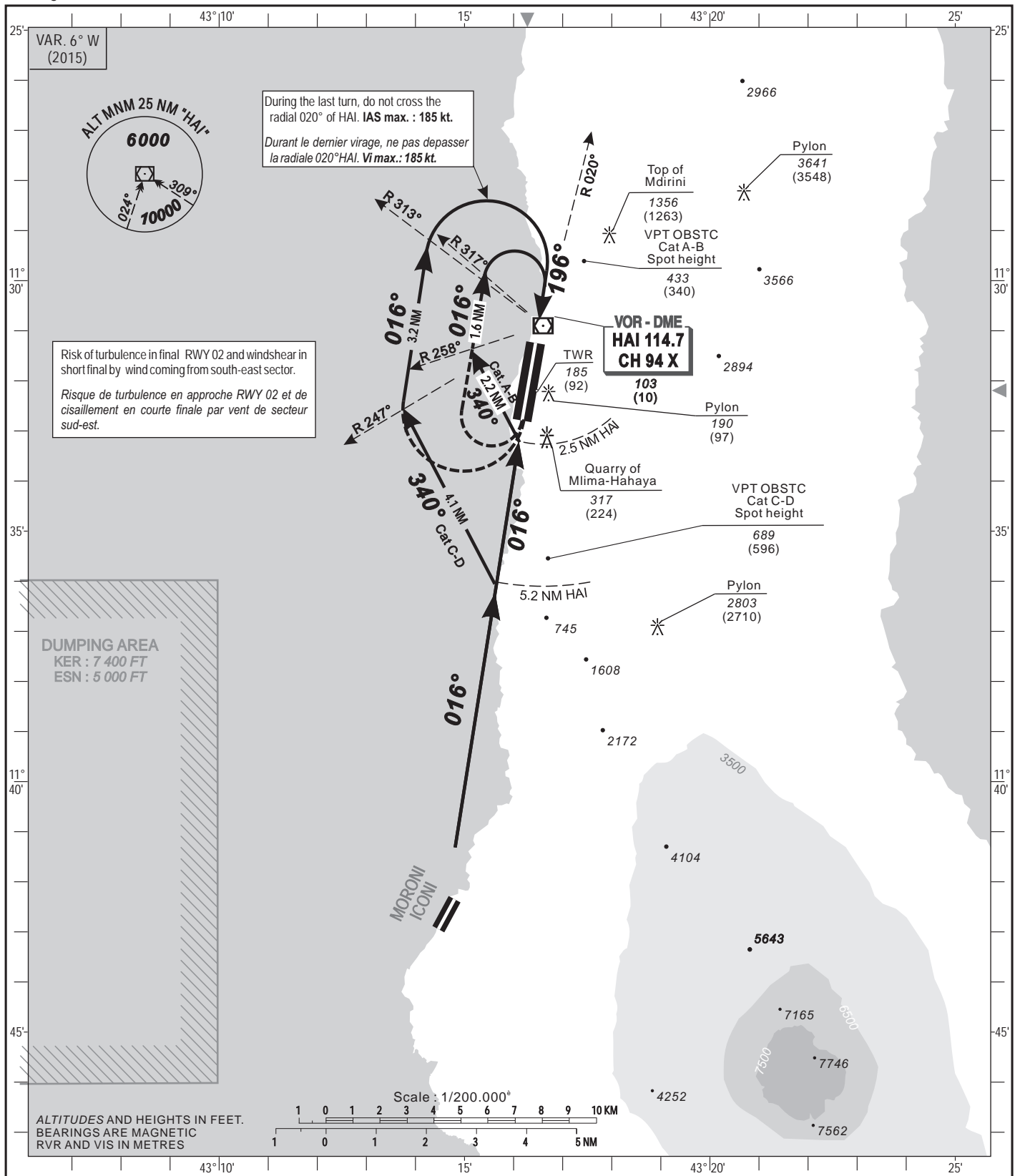
CORRECTIONS : SDF 2 distance information from THR RWY02 - ICAO format

INSTRUMENT APPROACH CHART-ICAO Categories A-B-C-D

ELEV: 93 MORONI Approach : 119.7
 MORONI Tower : 118.1
 HEIGHTS RELATED TO AERODROME ELEVATION

MORONI / Prince SAID IBRAHIM (FMCH)

VPT- RWY 20



ALT: 93
 TRANSITION ALTITUDE: 6000

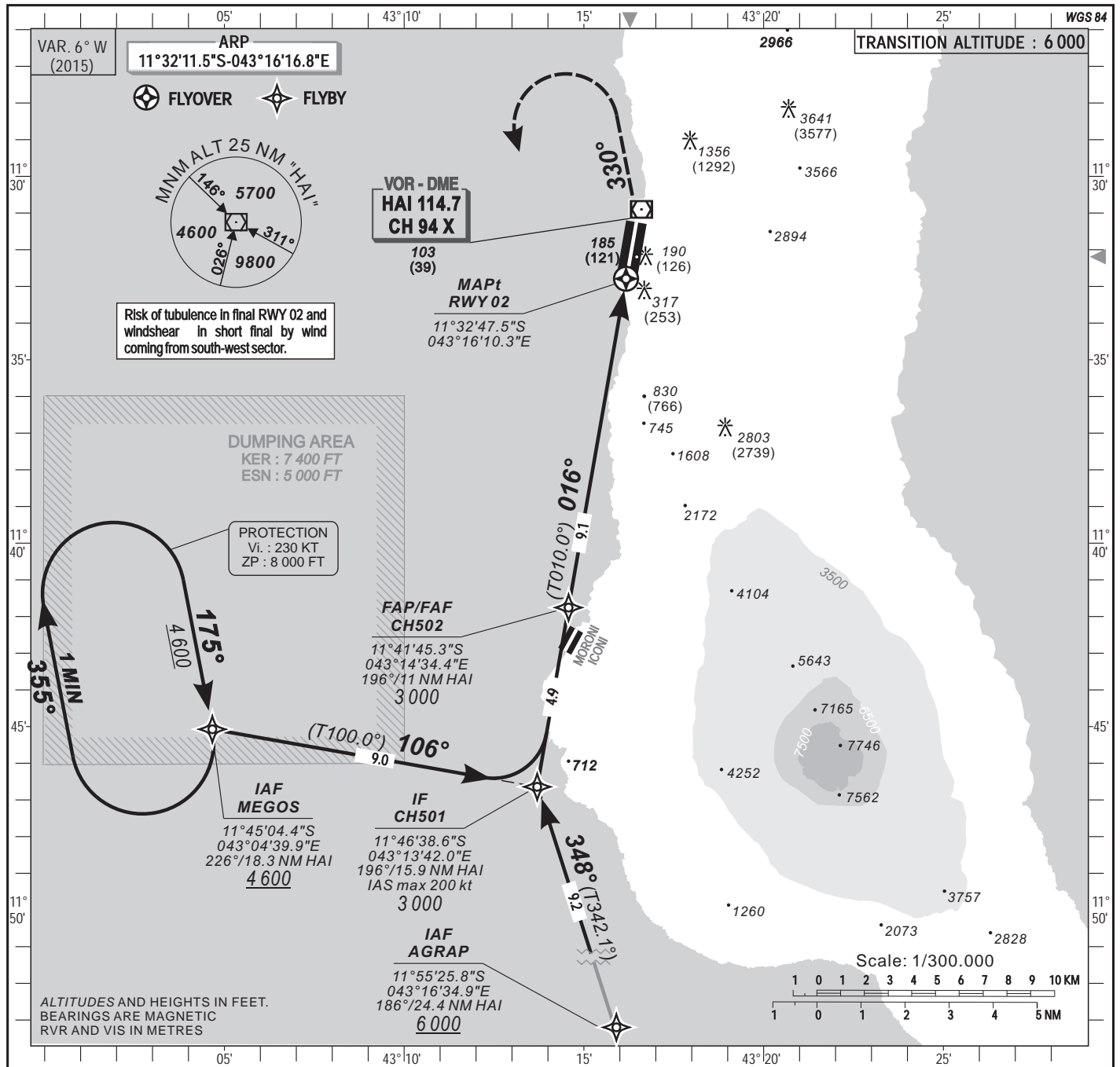
CORRECTIONS: : CAO format

CAT	MVI				VIS for take-off CAT A-B-C-D : 400					
	OCA (OCH)	MDA	MDH	RVR						
A	728 (635)	730 (640)		1500						
B	728 (635)	730 (640)		1600						
C	1083 (990)	1090 (990)		2400						
D	1083 (990)	1090 (990)		3600						
Notes : (*) Protection radial: 020° HAI.					Timing					
					KT	MIN	SEC	KT	MIN	SEC
					90			140		
					100			150		
					110			160		
120			170							
130			180							

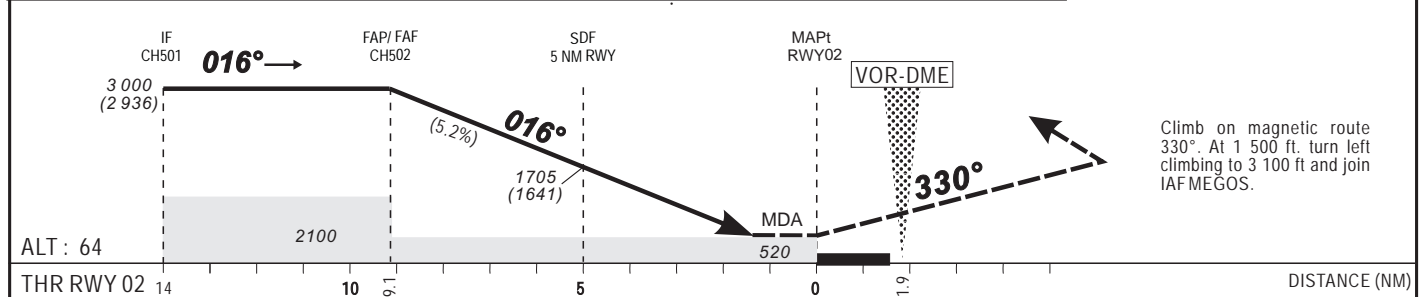
INSTRUMENT APPROACH CHART-ICAO
Categories A-B-C-D

ELEV. : 93 MORONI Approach : 119.7
THR : 64 MORONI Tower : 118.1
HEIGHTS RELATED TO THR 02 ELEVATION

MORONI / Prince SAID IBRAHIM (FMCH)
RNAV(GNSS) - RWY 02



Distance to THR02 (NM)	FAP/FAF	9	8	7	6	5	4	3	2
Altitude (ft)	3 000	2 980	2 660	2 345	2 025	1 705	1 390	1 070	750



CAT	LNAV				LNAV/VNAV				RVR for take-off	
	OCA (OCH)	MDA MDH	RVR(1)	RVR(2)	OCA (OCH)	DA MDH	RVR(1)	RVR(2)	CATA - B - C	CAT D
A	517 (453)	520 (460)	1000	1500	436 (372)	440 (380)	900	1500	400	400
B	517 (453)	520 (460)	1200	1500	436 (372)	440 (380)	1000	1500		
C	517 (453)	520 (460)	1200	2000	436 (372)	440 (380)	1000	1800		
D	517 (453)	520 (460)	1600	2000	436 (372)	440 (380)	1400	2000		

KT	MIN . SEC		KT	MIN . SEC	
	MIN	SEC		MIN	SEC
90	6	04	140	3	54
100	5	28	150	3	38
110	4	58	160	3	25
120	4	33	170	3	13
130	4	12	180	3	02

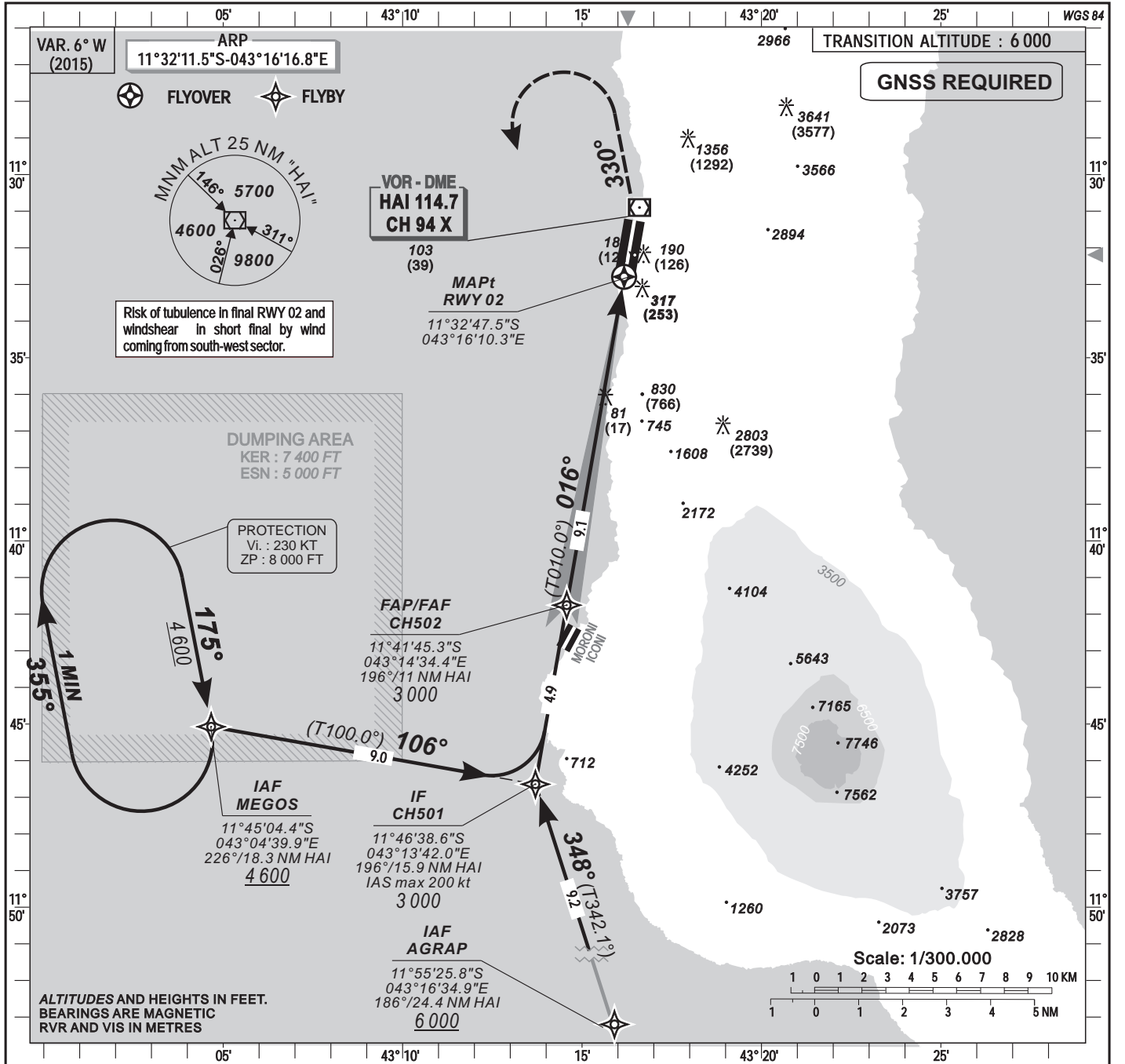
- Notes:
- (1) With approach lights
 - (2) Without approach lights
 - Climbing sectors for take-off : between radials 293° and 189° HAI.
 - Minimum temperature: 10°.

PROCEDURE TO USED ACCORDING TO AIC NR 02 / A / 2002 DAKAR - 21 MARCH 2002

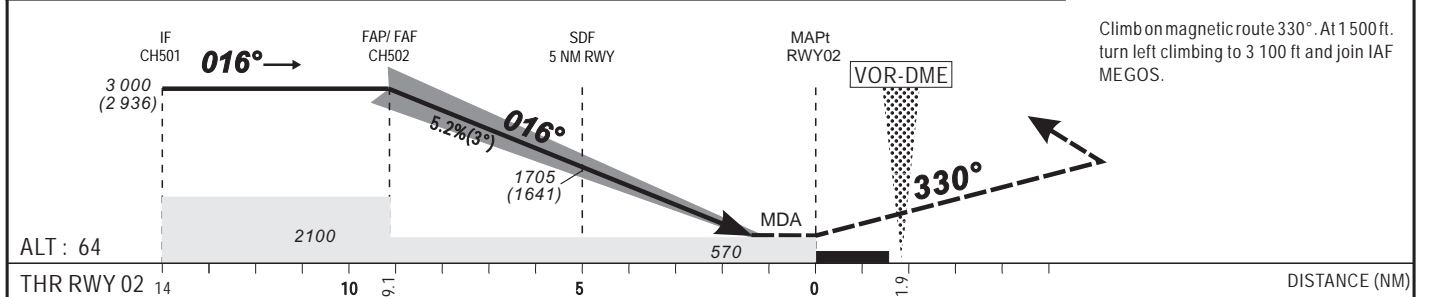
INSTRUMENT APPROACH CHART-ICAO
Categories A-B-C-D

ELEV. : 93 MORONI Approach : 119.7
THR : 64 MORONI Tower : 118.1
HEIGHTS RELATED TO THR 02 ELEVATION

MORONI / Prince SAID IBRAHIM (FMCH)
ILS X or LOC X RWY 02
IDENT ILS "HA" FREQ. 110.3



Distance to THR02 (NM)	FAP/FAF	9	8	7	6	5	4	3	2
Altitude (ft)	3 000	2 980	2 660	2 345	2 025	1 705	1 390	1 070	750



CAT	Cat. 1				LOC				RVR for take-off CAT A - B - C : 400 CAT D : 400
	OCA (OCH)	DA	DH	RVR(1)	RVR(2)	OCA (OCH)	MDA MDH	RVR(1)	
A	320 (256)	320 (260)	650	1200	563 (499)	570 (500)	1000	1500	Timing FAF / THR 9.1 NM KT MIN. SEC KT MIN. SEC 90 6 Min 04 140 3 Min 54 100 5 Min 28 150 3 Min 38 110 4 Min 58 160 3 Min 25 120 4 Min 33 170 3 Min 13 130 4 Min 12 180 3 Min 02
B	332 (268)	340 (270)	650	1200	563 (499)	570 (500)	1200	1500	
C	340 (276)	340 (280)	650	1200	563 (499)	570 (500)	1200	2000	
D	351 (287)	360 (290)	650	1200	563 (499)	570 (500)	1600	2000	

Notes: - (1) With approach lights - (2) Without approach lights ;
- Climbing sectors for take-off : between radials 293° and 189° HAI ;
- RDH: 50 ft.

PROCEDURE TO USED ACCORDING TO AIC NR 02 / A / 2002 DAKAR - 21 MARCH 2002

FORMULAIRE D'ENQUÊTE DE SATISFACTION CLIENTS CUSTOMERS SATISFACTION SURVEY FORM

ANTANANARIVO NOF - AIRAC AIP SUP NR 49/A/17FM

INFORMATION SUR LE CLIENT / CUSTOMER INFORMATION :

Date: _____






Organisation : _____

Nom et prénoms / Name : _____

Fonction / Position : _____

Email(s): _____

NIVEAU DE SATISFACTION / SATISFACTION LEVEL :

Niveau /Level	Smiley	Meaning / Signification	Pourcentage / Percentage
1		non satisfaisant / <i>not satisfactory</i>	0...20%
2		peu satisfaisant / <i>somewhat satisfactory</i>	21...40%
3		satisfaisant / <i>satisfactory</i>	41...60%
4		très satisfaisant / <i>very satisfactory</i>	61...80%
5		entièrement satisfaisant / <i>Entirely satisfactory</i>	81...100%

2 AIP SUPPLEMENT (SUP)



2.1 Suffisance des informations : <i>Information sufficiency :</i>	<input type="checkbox"/>	<input type="checkbox"/>	<input type="checkbox"/>	<input type="checkbox"/>	<input type="checkbox"/>
2.2 Exactitude des informations : <i>Information accuracy :</i>	<input type="checkbox"/>	<input type="checkbox"/>	<input type="checkbox"/>	<input type="checkbox"/>	<input type="checkbox"/>
2.3 Cohérence des informations : <i>Information coherence :</i>	<input type="checkbox"/>	<input type="checkbox"/>	<input type="checkbox"/>	<input type="checkbox"/>	<input type="checkbox"/>
2.4 Exhaustivité des renvois à l'AIP : <i>Comprehensiveness of the AIP references :</i>	<input type="checkbox"/>	<input type="checkbox"/>	<input type="checkbox"/>	<input type="checkbox"/>	<input type="checkbox"/>

2.5 Observations / Remarks