

Phone : +(261) 20.22.581.13
+(261) 20.22.581.14
+(261) 33.23.370.01
Fax : +(261) 20.22.581.15

AFTN : FMMMYNYX

E-mail : bnifmmi@asecna.org
AntananarivoNOF@gmail.com

Web : www.ais-asecna.org



**BUREAU NOTAM INTERNATIONAL
D'ANTANANARIVO**

**B.P. 46 Ivato Aéroport Antananarivo -
MADAGASCAR**

**AIP SUP
NR 22/A/15FM
31 JUL 2015**

LA REUNION - MADAGASCAR - MAYOTTE - UNION DES COMORES

FMMT – TOAMASINA

Instrument approach chart *RNAV(GNSS) - RWY 01*

Mise en vigueur / *Effective date* : **31 JUL 2015**

Validité / *Validity* : **PERM**

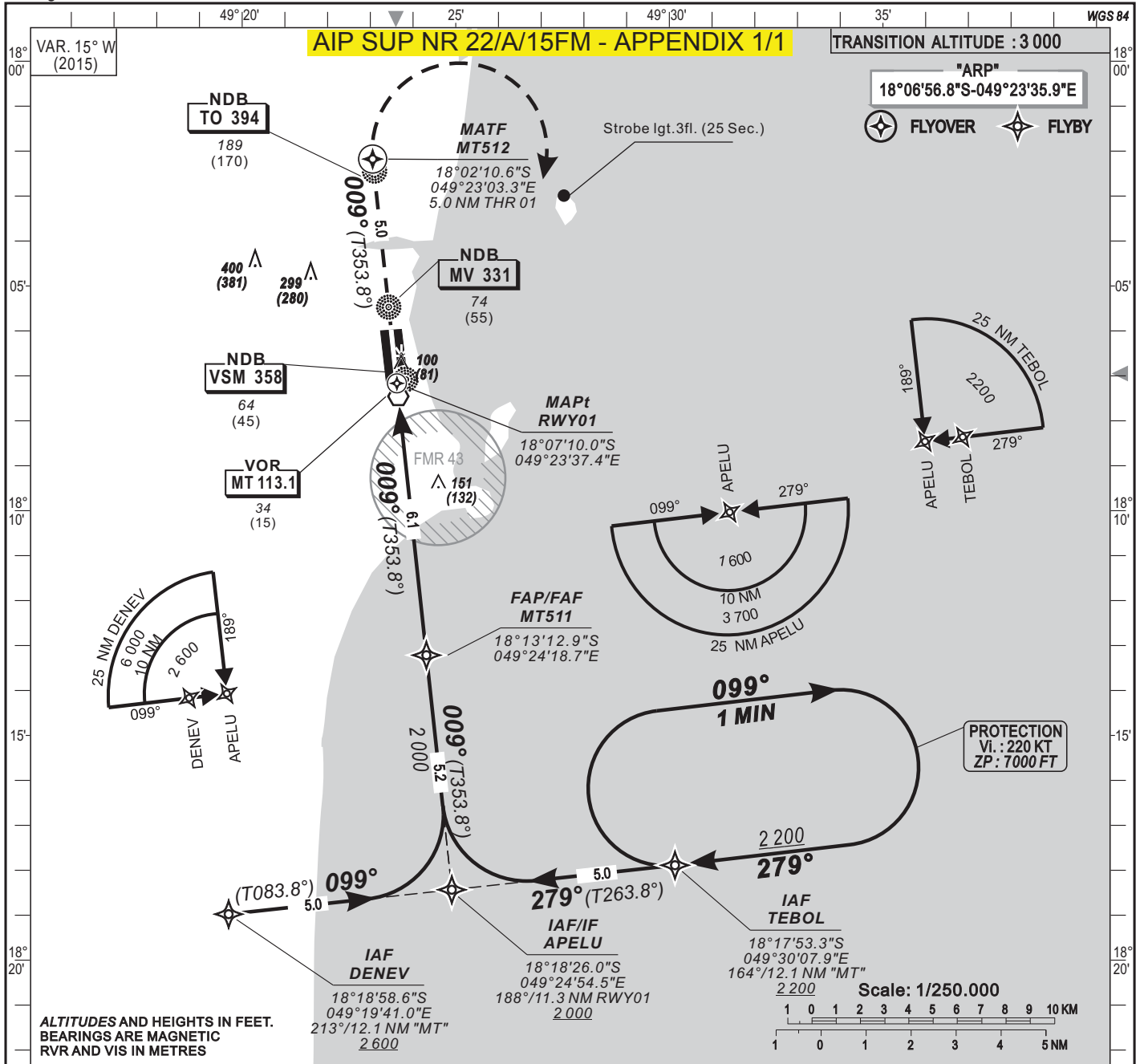
La carte d'approche aux instruments RNAV(GNSS) - RWY 01 de l'aérodrome de TOAMASINA a été corrigée (axe de longitude).

The instrument approach chart RNAV(GNSS) – RWY 01 of TOAMASINA aerodrome has been corrected (longitude axis).

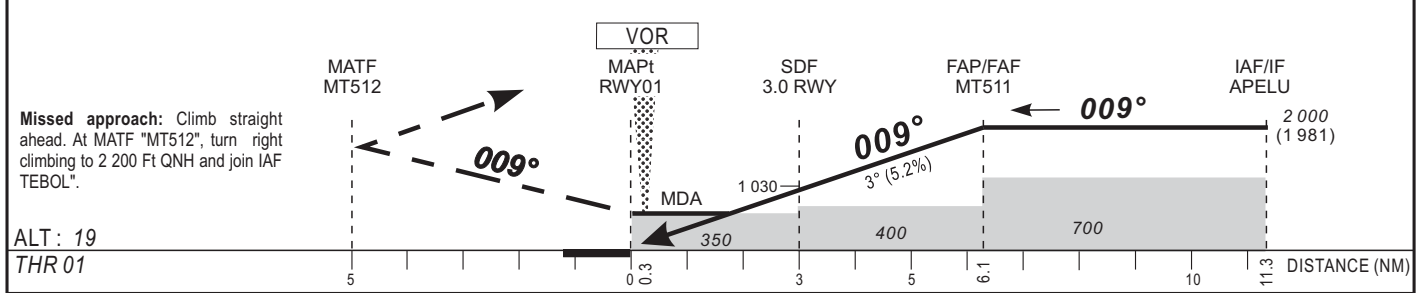
MODIFY ASECNA AIP CHART NR 809 I - 1D

THIS AIP SUP HAS 1 PAGE AND ONE APPENDIX

HEIGHTS RELATED TO THR 01 ELEVATION



Distance to THR 01 (NM)	FAP/FAF	8	7	6	5	4	3	2	1	- RDH: 50 ft
Altitude (ft)	2 000			1 980	1 660	1 345	1 025	705	390	- Minimum temperature : 15°.



CAT	LNAV			LNAV/VNAV			Circling(*)				RVR for take-off CATA - B - C : 400	
	OCA (OCH)	MDA	MDH	RVR	OCA (OCH)	DA	DH	RVR	OCA (OCH)	MDA		MDH
A	346 (327)	350 (330)	1500	268 (249)	270 (250)	1500	594 (572)	600 (580)	1500			
B	346 (327)	350 (330)	1500	268 (249)	270 (250)	1500	594 (572)	600 (580)	1600			
C	346 (327)	350 (330)	1800	268 (249)	270 (250)	1600	693 (671)	700 (680)	2400			
D												

Timing		FAF / THR 6.1 NM	
KT	MIN . SEC	KT	MIN . SEC
90	4 Min 04	140	2 Min 37
100	3 Min 40	150	2 Min 26
110	3 Min 20	160	2 Min 17
120	3 Min 03	170	2 Min 09
130	2 Min 49	180	2 Min 02

Notes : - (*)-Daytime only.

PROCEDURE TO BE USED ACCORDING TO AIC NR 05 / 06 FM - 07 SEPTEMBER 2006

CORRECTIONS : Magnetic variation - takeoff RVR