

Phone : +(261) 20.22.581.13
 +(261) 20.22.581.14
 +(261) 33.23.370.01
 Fax : +(262) 20.22.581.15

AFTN : FMMMYNYX

E-mail : bnitana@asecna.org
 AntananarivoNOF@gmail.com

Web : www.ais-asecna.org



AIRAC AIP SUP
NR 18/A/14FM
02 OCT 2014

BUREAU NOTAM INTERNATIONAL D'ANTANANARIVO
 B.P. 46 Ivato Aéroport Antananarivo - MADAGASCAR

LA REUNION - MADAGASCAR - MAYOTTE - UNION DES COMORES

FMMI – Antananarivo / Ivato

MISE A JOUR DES PROCEDURES D'APPROCHE AUX INSTRUMENTS CONVENTIONNELLES

UPDATE OF THE CONVENTIONAL INSTRUMENT APPROACH PROCEDURES

Mise en vigueur / Effective date :	13 NOVEMBER 2014
Validité / Validity :	PERM

Les procédures d'approche aux instruments conventionnelles de l'aéroport d'Antananarivo/Ivato ont été mises à jour.

The conventional instrument approach procedures of Antananarivo/Ivato airport have been updated.

Les mises à jour portent essentiellement sur :

The updates are focused on :

- les minima opérationnels de décollage (RVR)
- la représentation de MOCA (partie grisée)
- le tableau distance/altitude
- la version anglaise

- *RVR operational minima*
- *MOCA indication (gray-shaded area)*
- *altitude/distance table*
- *english version*

MODIFY ASECNA ATLAS CHARTS:

<i>Chart number</i>	<i>Title</i>
811 V-2	ILS Z or LOC Z - RWY 11
811 V-3	ILS Y or LOC Y - RWY 11
811 V-4	VOR - RWY 11
811 V-5	NDB - RWY 11
811 V-6	VOR Z - RWY 29
811 V-7	VOR Y - RWY 29
811 H-8	NDB - RWY 29

CE SUPPLÉMENT AIP COMPORTE UNE PAGE ET SEPT ANNEXES
 THIS SUPPLEMENT AIP HAS ONE PAGE AND SEVEN APPENDICES

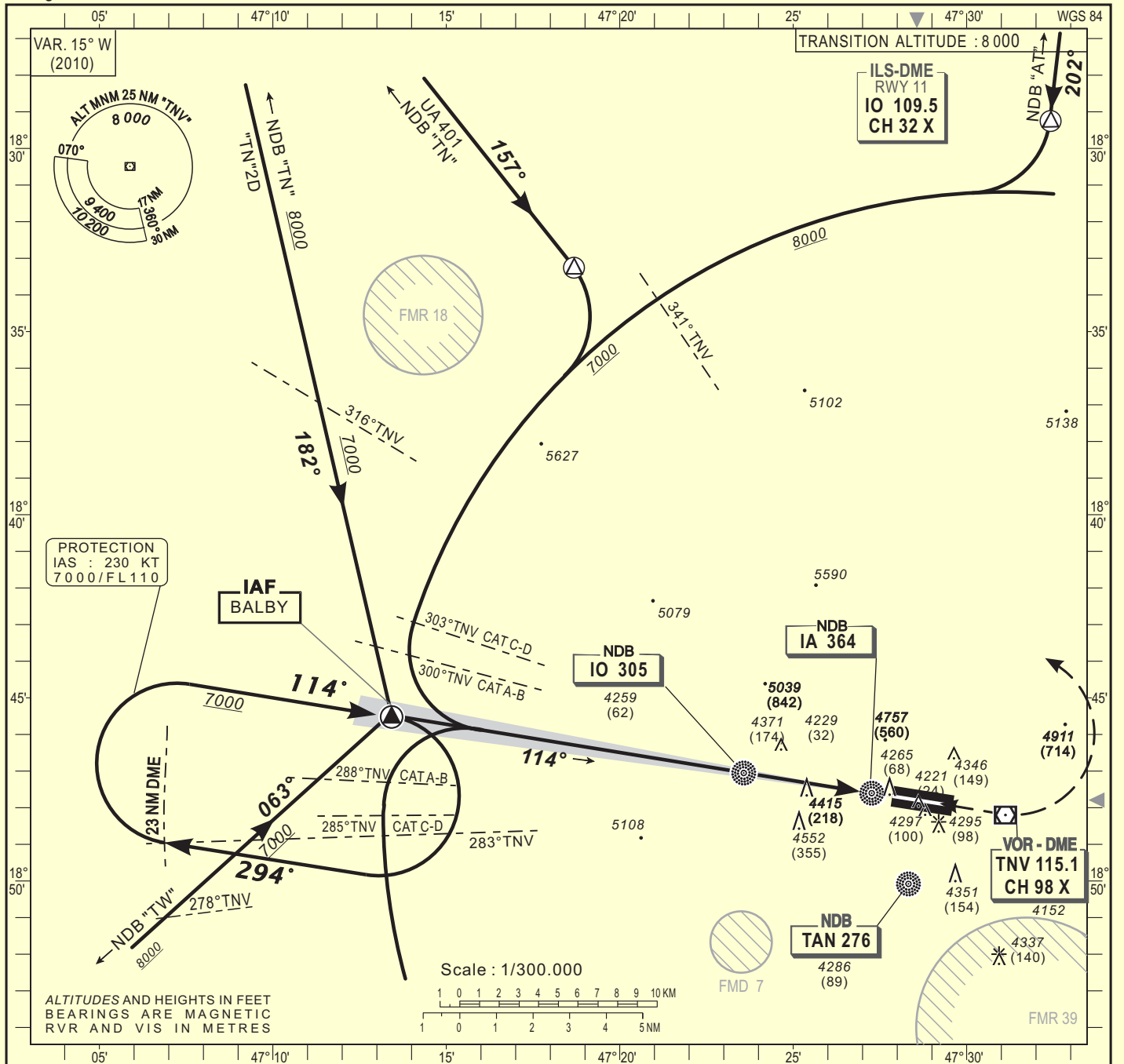
INSTRUMENT APPROACH CHART Categories A-B-C-D

ELV : 4198
THR : 4197

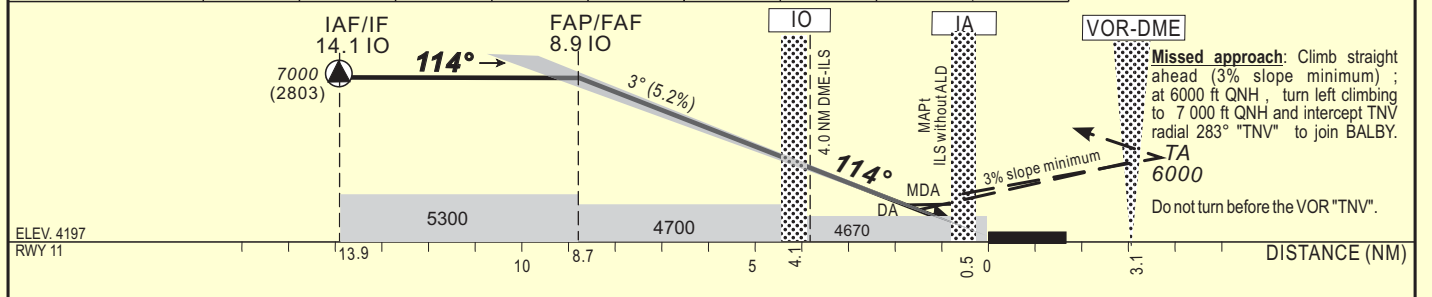
APP : ANTANANARIVO APPROACH 125.7
TWR : IVATO TOWER 120.1

ANTANANARIVO - Ivato (FMMI)
ILS Z or LOC Z - RWY 11
IDENT ILS "IO" FREQ 109.5

HEIGHTS RELATED TO THR RWY 11



Distance to ILS "IO" (NM)	FAP/FAF	8	7	6	5	4	3	2	1
Altitude (ft)	7000	6730	6400	6080	5760	5450	5130	4810	4490



CAT	Cat. 1				LOC				CIRCLING (3)				RVR for take-off: CATA - B - C : 400 CAT D : 400
	OCA (OCH)	DA	DH	RVR(1) RVR(2)	OCA (OCH)	MDA MDH	RVR(1) RVR(2)	OCA (OCH)	MDA MDH	VIS			
A	4395 (198)	4400 (200)		550 1000	4661 (464)	4670 (470)	1000 1500	5052 (855)	5060 (860)	1500			
B	4407 (210)	4410 (210)		600 1000	4661 (464)	4670 (470)	1200 1500	5052 (855)	5060 (860)	1600			
C	4415 (218)	4420 (220)		600 1000	4661 (464)	4670 (470)	1200 2000	5305 (1108)	5310 (1110)	2400			
D	4426 (229)	4430 (230)		600 1000	4661 (464)	4670 (470)	1600 2000	5433 (1236)	5440 (1240)	3600			

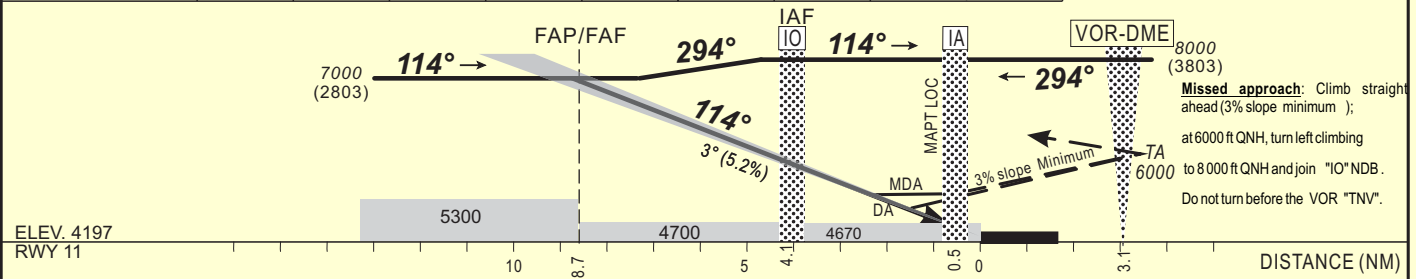
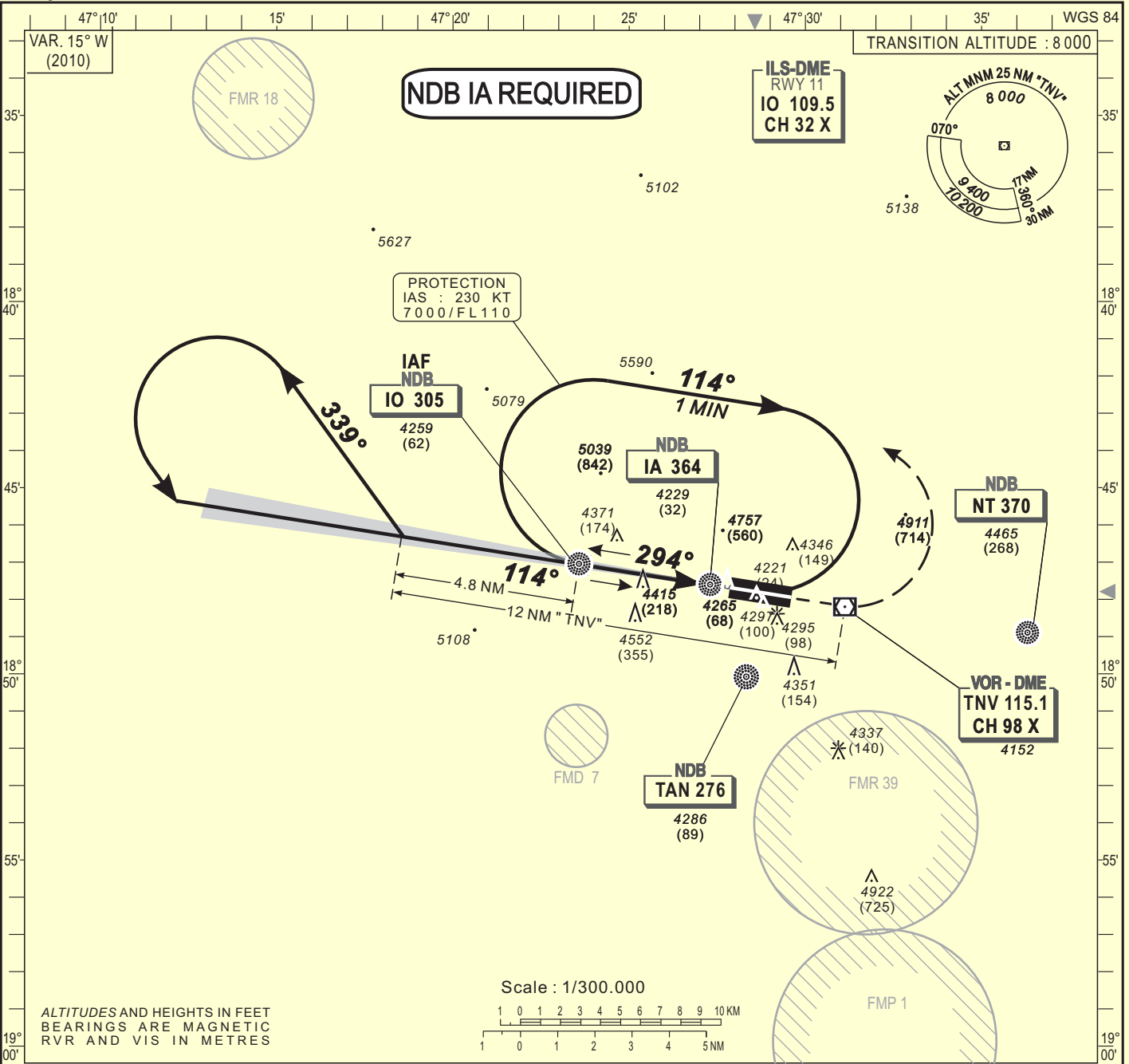
Notes : (1) With approach lights - (2) Without approach lights - (3) North of aerodrome - Daytime only - OCH and MDH AAL

Timing	FAF / THR 8.7 NM						
	KT	MIN	SEC	KT	MIN	SEC	
90	5	Min	48	140	3	Min	44
100	5	Min	13	150	3	Min	29
110	4	Min	45	160	3	Min	16
120	4	Min	21	170	3	Min	04
130	4	Min	01	180	2	Min	54

AIRAC AIP SUP NR 18/A/14FM - APPENDIX 1/7

CORRECTIONS : English edition - Minima for take-off.

HEIGHTS RELATED TO THR RWY 11



CAT	Cat.1				LOC				CIRCLING (3)				RVR for take-off: CATA - B - C : 400 CAT D : 400
	OCA (OCH)	DA	DH	RVR(1)RVR(2)	OCA (OCH)	MDA MDH	RVR(1)RVR(2)	OCA (OCH)	MDA MDH	VIS			
A	4395 (198)	4400 (200)		550 1000	4661 (464)	4670 (470)	1000 1500	5052 (855)	5060 (860)	1500	Timing IO / THR 4.1 NM		
B	4407 (210)	4410 (210)		600 1000	4661 (464)	4670 (470)	1200 1500	5052 (855)	5060 (860)	1600			
C	4415 (218)	4420 (220)		600 1000	4661 (464)	4670 (470)	1200 2000	5305 (1108)	5310 (1110)	2400			
D	4426 (229)	4430 (230)		600 1000	4661 (464)	4670 (470)	1600 2000	5433 (1236)	5440 (1240)	3600			

Notes : (1) With approach lights - (2) Without approach lights
(3) North of aerodrome - Daytime only - OCH and MDH AAL

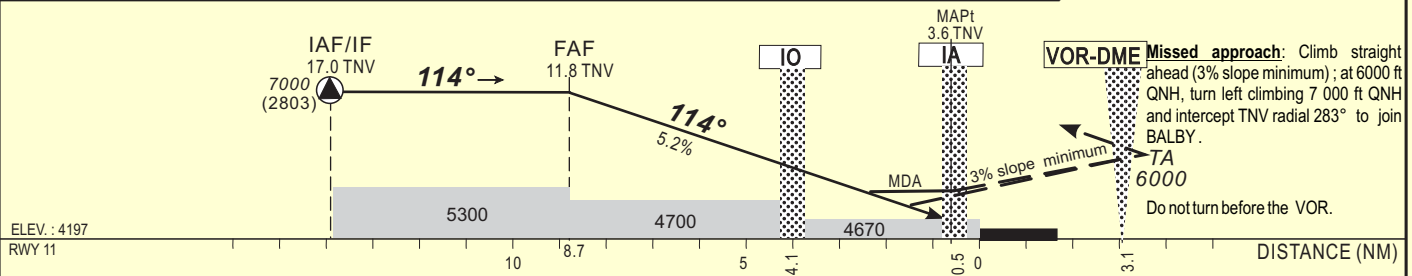
AIRAC AIP SUP NR 18/A/14FM - APPENDIX 2/7

CORRECTIONS : English edition - Minima for take-off.

HEIGHTS RELATED TO THR RWY 11



Distance to TNV (NM)	FAF	11	10	9	8	7	6	5	4
Altitude (ft)	7000	6800	6480	6160	5840	5520	5210	4890	4570



CAT	VOR-DME				CIRCLING (3)				RVR for take-off: CATA - B - C : 400 CAT D : 400
	OCA (OCH)	MDA	MDH	RVR(1)	RVR(2)	OCA (OCH)	MDA	MDH	
A	4661 (464)	4670 (470)		1000	1500	5052 (855)	5060 (860)		1500
B	4661 (464)	4670 (470)		1200	1500	5052 (855)	5060 (860)		1600
C	4661 (464)	4670 (470)		1200	2000	5305 (1108)	5310 (1110)		2400
D	4661 (464)	4670 (470)		1600	2000	5433 (1236)	5440 (1240)		3600

Notes : (1) With approach lights - (2) Without approach lights
(3) North aerodrome - Daytime only - OCH and MDH AAL

Timing "IO" / THR		Timing "IO" / THR	
KT	MIN SEC	KT	MIN SEC
90	2 Min 44	140	1 Min 45
100	2 Min 28	150	1 Min 38
110	2 Min 14	160	1 Min 32
120	2 Min 03	170	1 Min 27
130	1 Min 54	180	1 Min 22

CORRECTIONS : English edition - Minima for take-off.

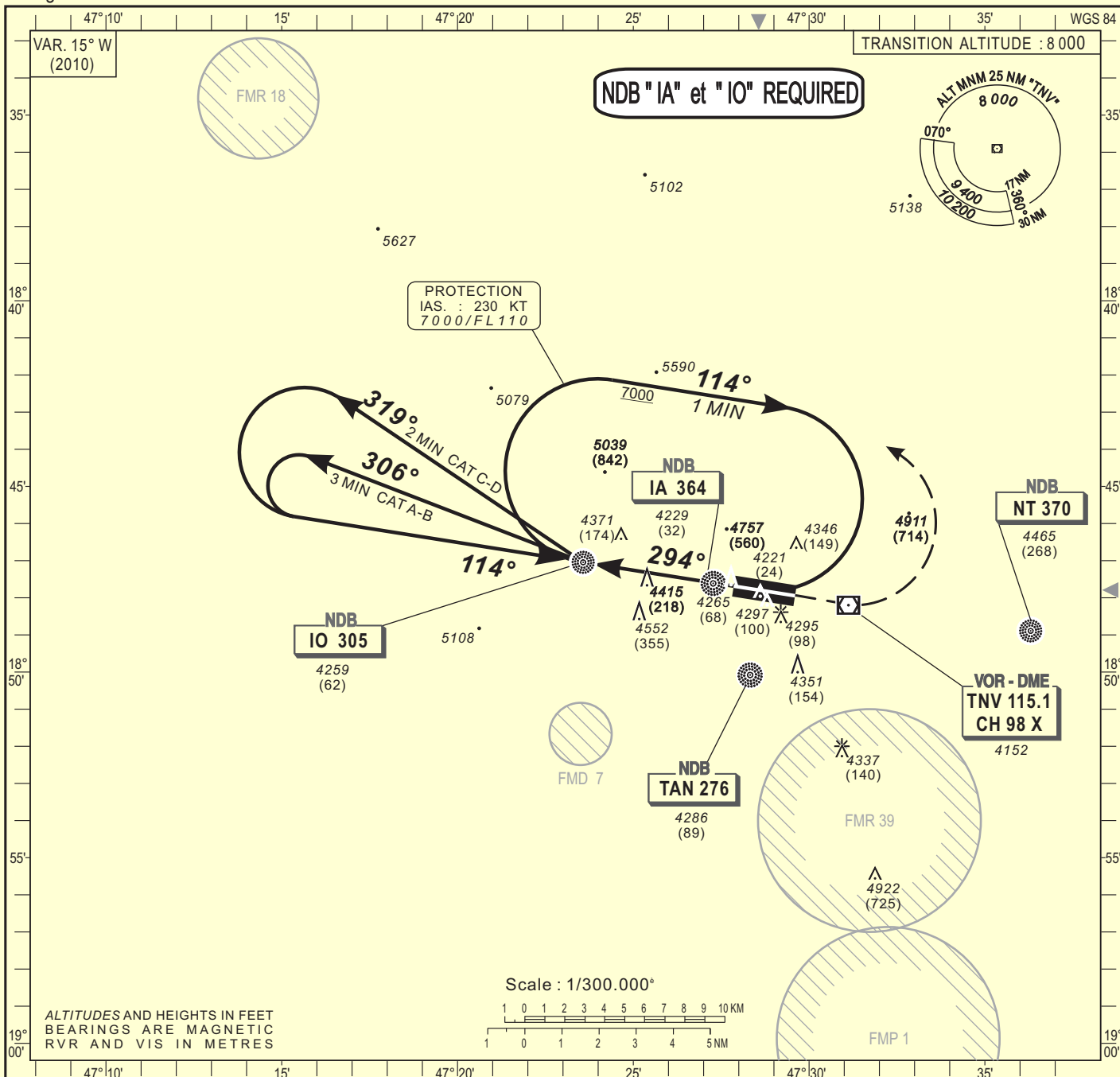
INSTRUMENT
APPROACH CHART
Categories A-B-C-D

ELV. : 4198
THR : 4197

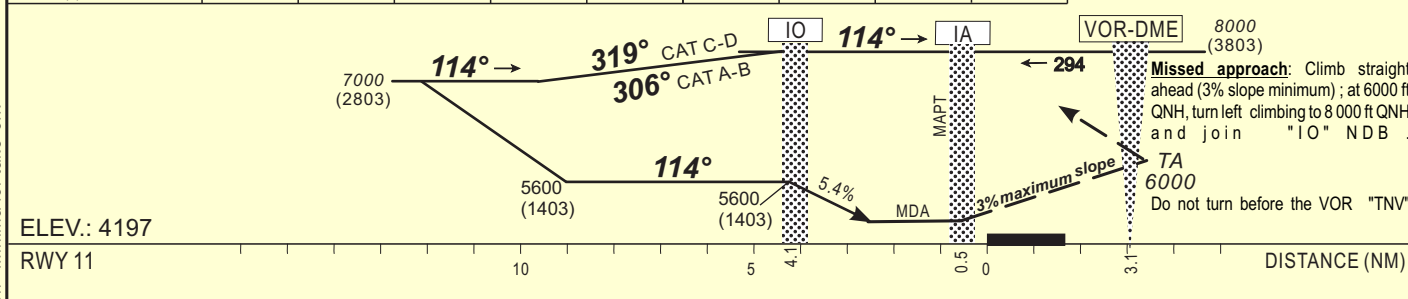
APP : ANTANANARIVO APPROACH 125.7
TWR : IVATO TOWER 120.1

ANTANANARIVO - Ivato (FMFI)
NDB - RWY 11
IDENT NDB "IO" FREQ 305

HEIGHTS RELATED TO THR RWY 11



Distance (NM)	FAF	8	7	6	5	4	3	2	1
Altitude (ft)									



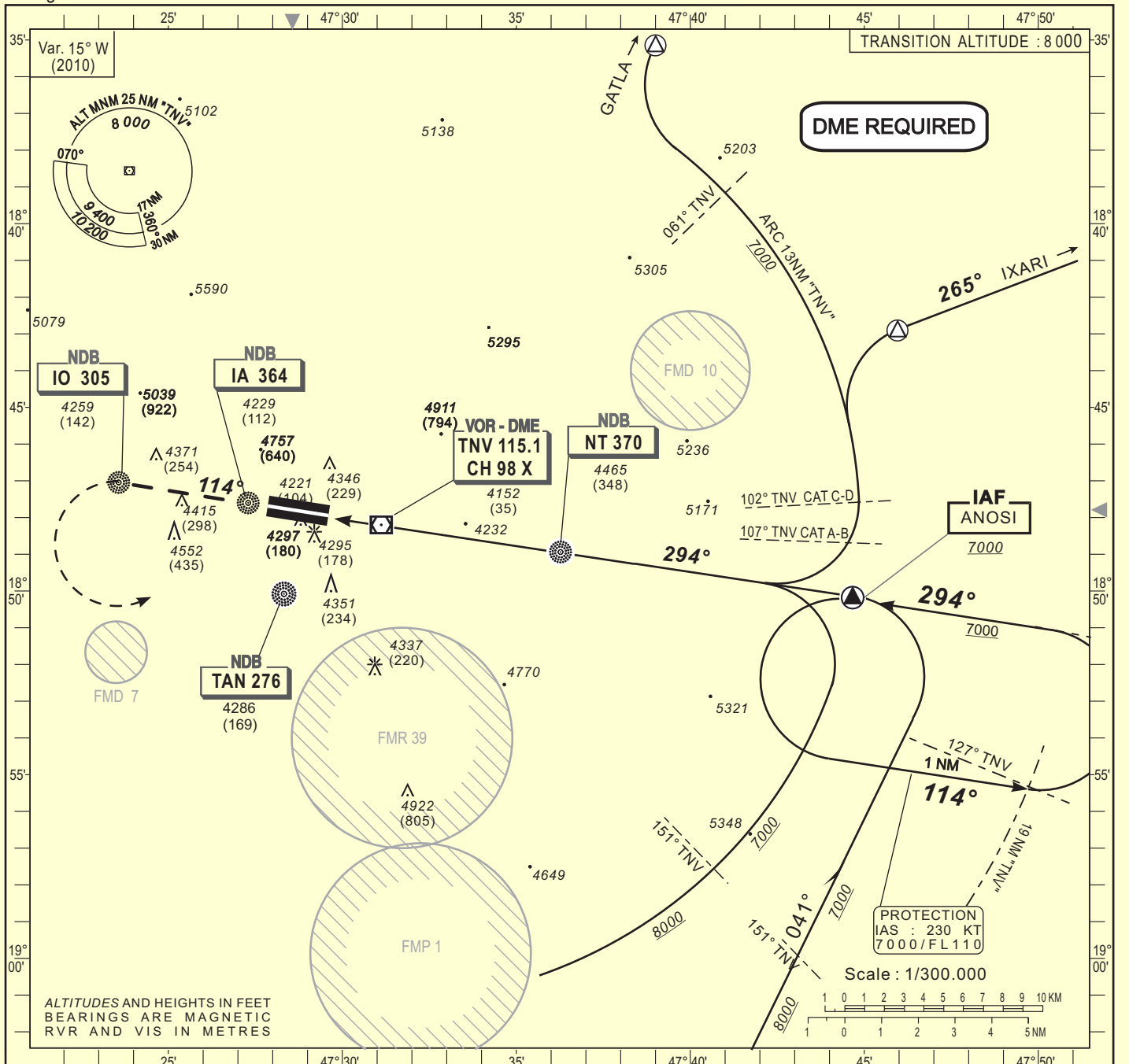
CAT	NDB				CIRCLING (3)			RVR for take-off:	
	OCA (OCH)	MDA MDH	RVR(1)	RVR(2)	OCA (OCH)	MDA MDH	VIS	CATA - B - C	CAT D
A	4710 (513)	4710 (520)	1000	1500	5052 (855)	5060 (860)	1500	400	400
B	4710 (513)	4710 (520)	1200	1500	5052 (855)	5060 (860)	1600	Timing "IO" / THR 4.1 NM	
C	4710 (513)	4710 (520)	1200	2000	5305 (1108)	5310 (1110)	2400	KT	MIN SEC
D	4710 (513)	4710 (520)	1600	2000	5433 (1236)	5440 (1240)	3600	140	1 Min 45

Notes : (1) With approach lights - (2) Without approach lights
(3) North of aerodrome - Daytime only - OCH and MDH AAL

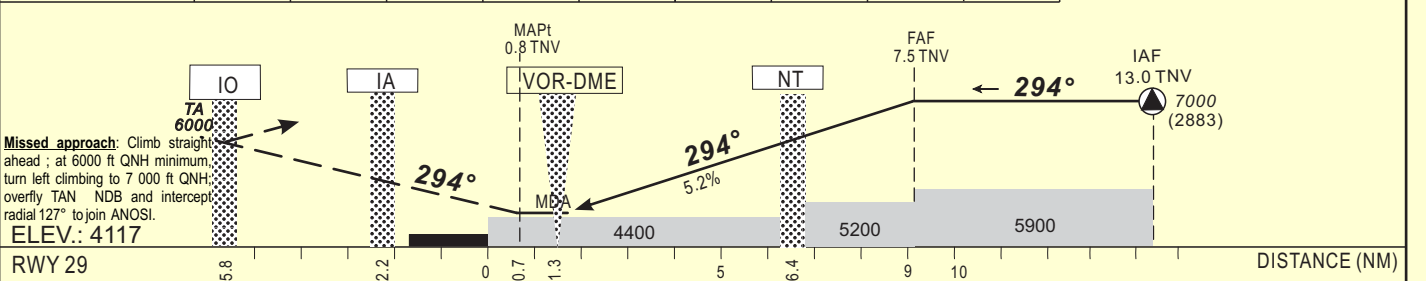
AIRAC AIP SUP NR 18/A/14FM - APPENDIX 4/7

CORRECTIONS : English edition - Minima for take-off.

HEIGHTS RELATED TO THR RWY 29



Distance to "TNV" (NM)	FAF	8	7	6	5	4	3	2	1
Altitude (ft)	7000	6720	6400	6080	5760	5440	5130	4810	

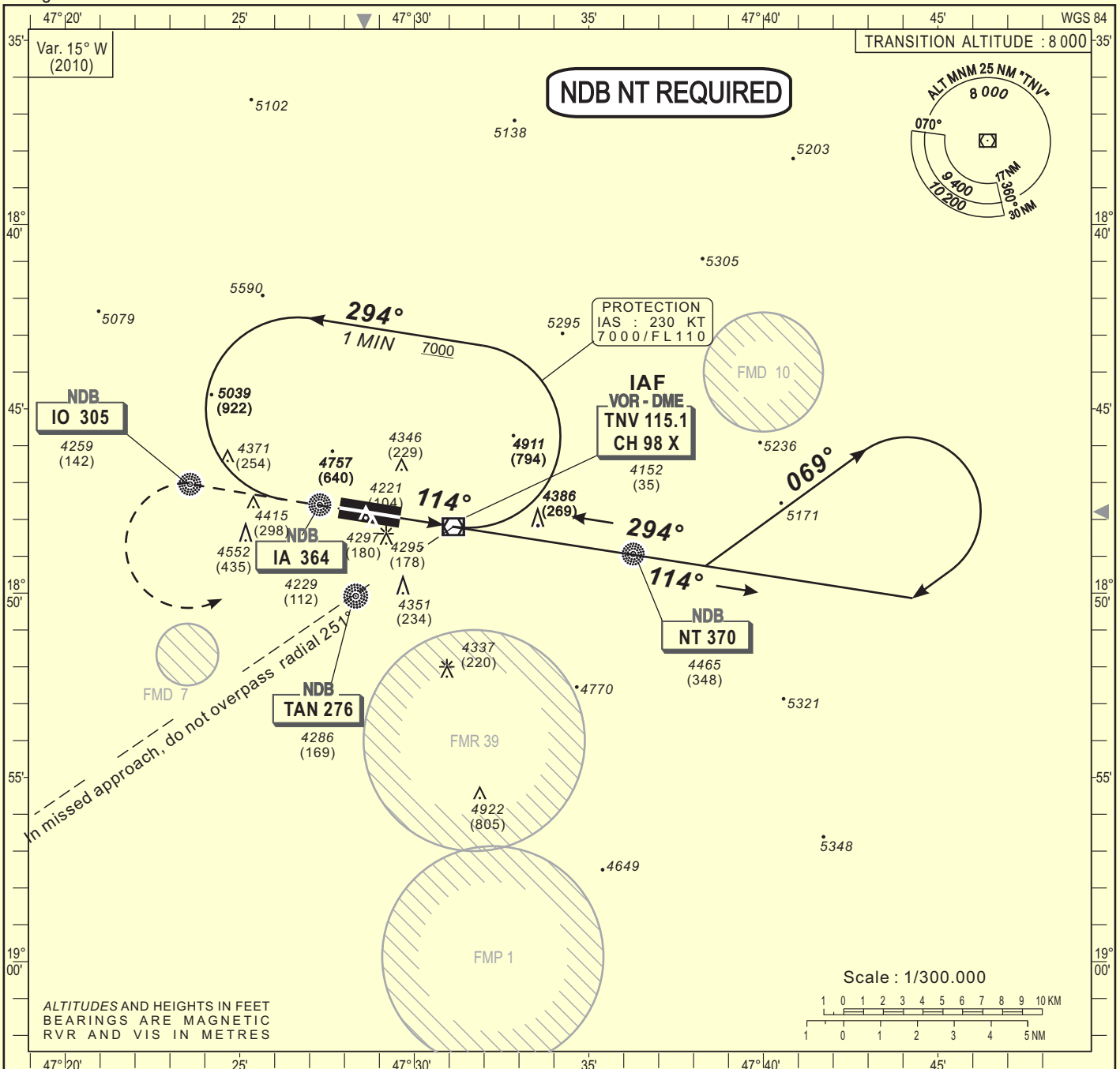


CAT	VOR-DME				CIRCLING (1)				RVR for take-off: CATA - B - C : 400 CAT D : 400
	OCA (OCH)	MDA	MDH	RVR	OCA (OCH)	MDA	MDH	VIS	
A	4397 (280)	4400 (280)		1500	5052 (935)	5060 (940)		1500	Timing "NT" / THR 6.4 NM
B	4397 (280)	4400 (280)		1500	5052 (935)	5060 (940)		1600	
C	4397 (280)	4400 (280)		1600	5305 (1188)	5310 (1190)		2400	
D	4397 (280)	4400 (280)		1800	5433 (1316)	5440 (1320)		3600	

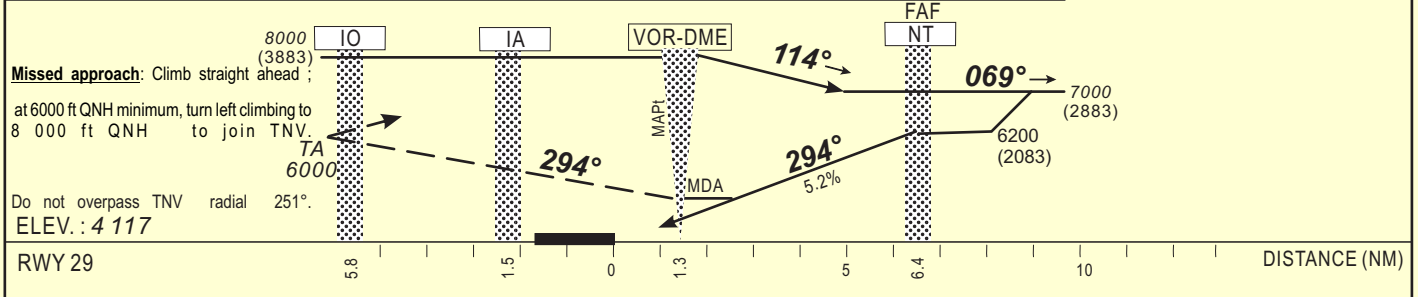
Notes : (1) North aerodrome - Daytime only - OCH and MDH AAL

KT	MIN	SEC	KT	MIN	SEC
90	4	Min 16	140	2	Min 45
100	3	Min 50	150	2	Min 34
110	3	Min 29	160	2	Min 24
120	3	Min 12	170	2	Min 16
130	2	Min 57	180	2	Min 08

CORRECTIONS : English edition - Minima for take-off.



Distance (NM) to TNV	FAF	8	7	6	5	4	3	2	1
Altitude (ft)				6080	5760	5440	5130	4810	

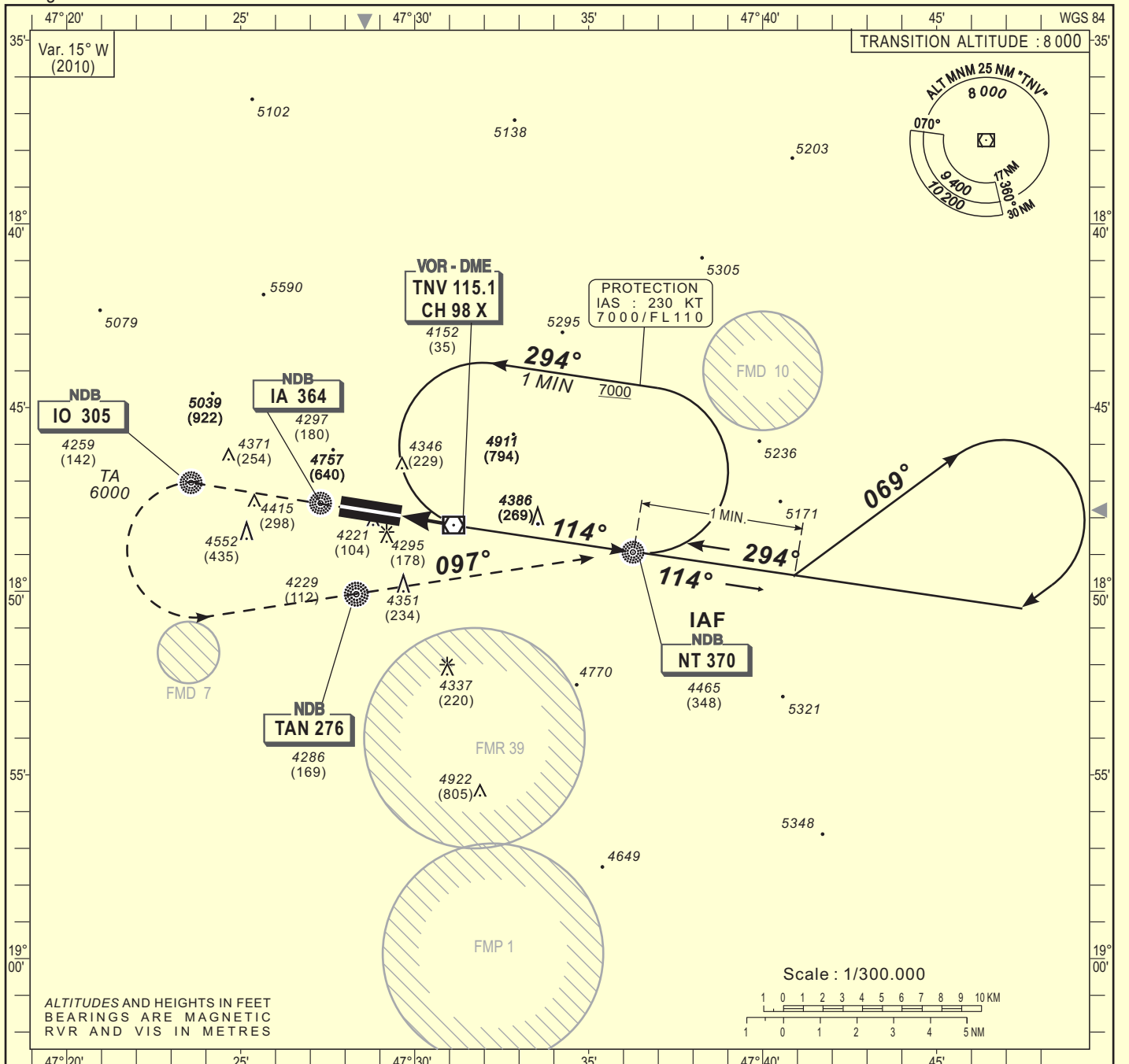


CAT	VOR				CIRCLING (1)				RVR for take-off:	
	OCA (OCH)	MDA MDH	RVR		OCA (OCH)	MDA MDH	VIS			
A	4632 (515)	4640 (520)	1500		5052 (935)	5060 (940)	1500		CATA - B - C : 400	
B	4632 (515)	4640 (520)	1500		5052 (935)	5060 (940)	1600		CAT D : 400	
C	4632 (515)	4640 (520)	2000		5305 (1188)	5310 (1190)	2400		Timing "NT" / THR 6.4 NM	
D	4632 (515)	4640 (520)	2000		5433 (1316)	5440 (1320)	3600		KT MIN SEC KT MIN SEC	

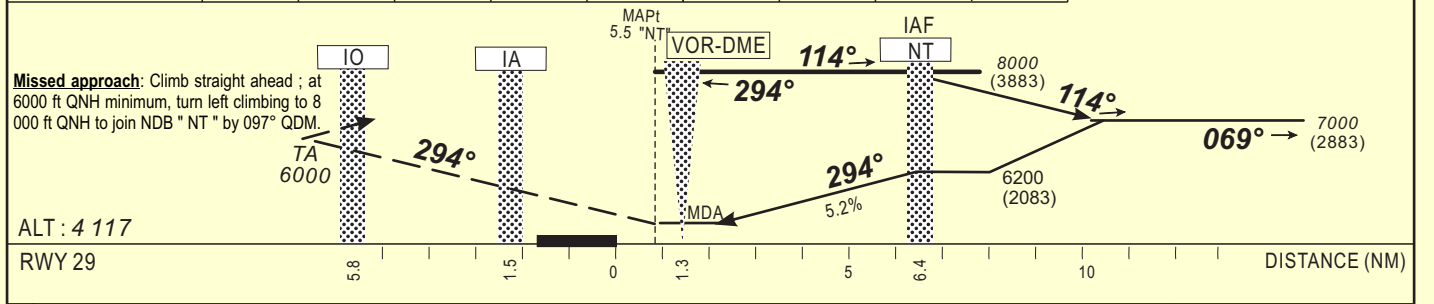
Notes: (1) North aerodrome - Daytime only - OCH and MDH AAL

90	4 Min 16	140	2 Min 45
100	3 Min 50	150	2 Min 34
110	3 Min 29	160	2 Min 24
120	3 Min 12	170	2 Min 16
130	2 Min 57	180	2 Min 08

HEIGHTS RELATED TO THR RWY 29



Distance (NM) to TNV	FAF	8	7	6	5	4	3	2	1
Altitude (ft)				6080	5760	5440	5130	4810	



CAT	NDB				CIRCLING (1)			VIS	RVR for take-off:	
	OCA (OCH)	MDA	MDH	RVR	OCA (OCH)	MDA	MDH		CATA - B - C	CAT D
A	4632 (515)	4640 (520)		1500	5052 (935)	5060 (940)		1500		
B	4632 (515)	4640 (520)		1500	5052 (935)	5060 (940)		1600		
C	4632 (515)	4640 (520)		2000	5305 (1188)	5310 (1190)		2400		
D	4632 (515)	4640 (520)		2000	5433 (1316)	5440 (1320)		3600		

Notes : (1) North of aerodrome - Daytime only - OCH and MDH AAL

Timing "NT" / MAPt 5.5 NM	
KT	MIN SEC
90	3 Min 40
100	3 Min 18
110	3 Min 00
120	2 Min 45
130	2 Min 32

CORRECTIONS : English edition - Minima for take-off