

Phone : +(221) 77.519.79.01

+ (221) 33.957.49.37

Fax : +(221) 33.820.06.00

AFTN : GOOYNYX

E-mail : dakarbni@asecna.org

Web : <https://aim.asecna.aero>



AIRAC AIP SUP

NR 63/A/21GO

JUNE 17, 2021

BUREAU NOTAM INTERNATIONAL DE L'OUEST AFRICAIN

B.P. 8155 Aéroport International Blaise DIAGNE Dakar/Diass-SENEGAL

BENIN – BURKINA FASO – COTE D'IVOIRE – GUINEE BISSAU – MALI – MAURITANIE – NIGER – SENEGAL – TOGO

MISE A JOUR DES CARTES D'APPROCHE AUX INSTRUMENTS DE L'AERODROME DE YAMOUSSOUKRO.

UPDATE OF INSTRUMENT APPROACH CHARTS OF YAMOUSSOUKRO AERODROME

CÔTE D'IVOIRE

DATE D'ENTREE EN VIGUEUR / EFFECTIVE DATE	12 AOÛT à 0000 TU / 12 th AUGUST at 0000UTC
VALIDITE / VALIDITY	PERM

CE SUPPLEMENT ANNULE ET REMPLACE LE SUPPLEMENT NR 17/A/21GO
THIS SUPPLEMENT CANCELS AND REPLACES THE SUPPLEMENT NR 17/A /21GO

Les cartes ci-dessous listées, ont été mises à jour

The charts listed below, have been updated

06AD2-DIYO-IAC-ILSX05

06AD2-DIYO-IAC-ILSX05-DATA

06AD2-DIYO-IAC-ILSY05

06AD2-DIYO-IAC-ILSZ05

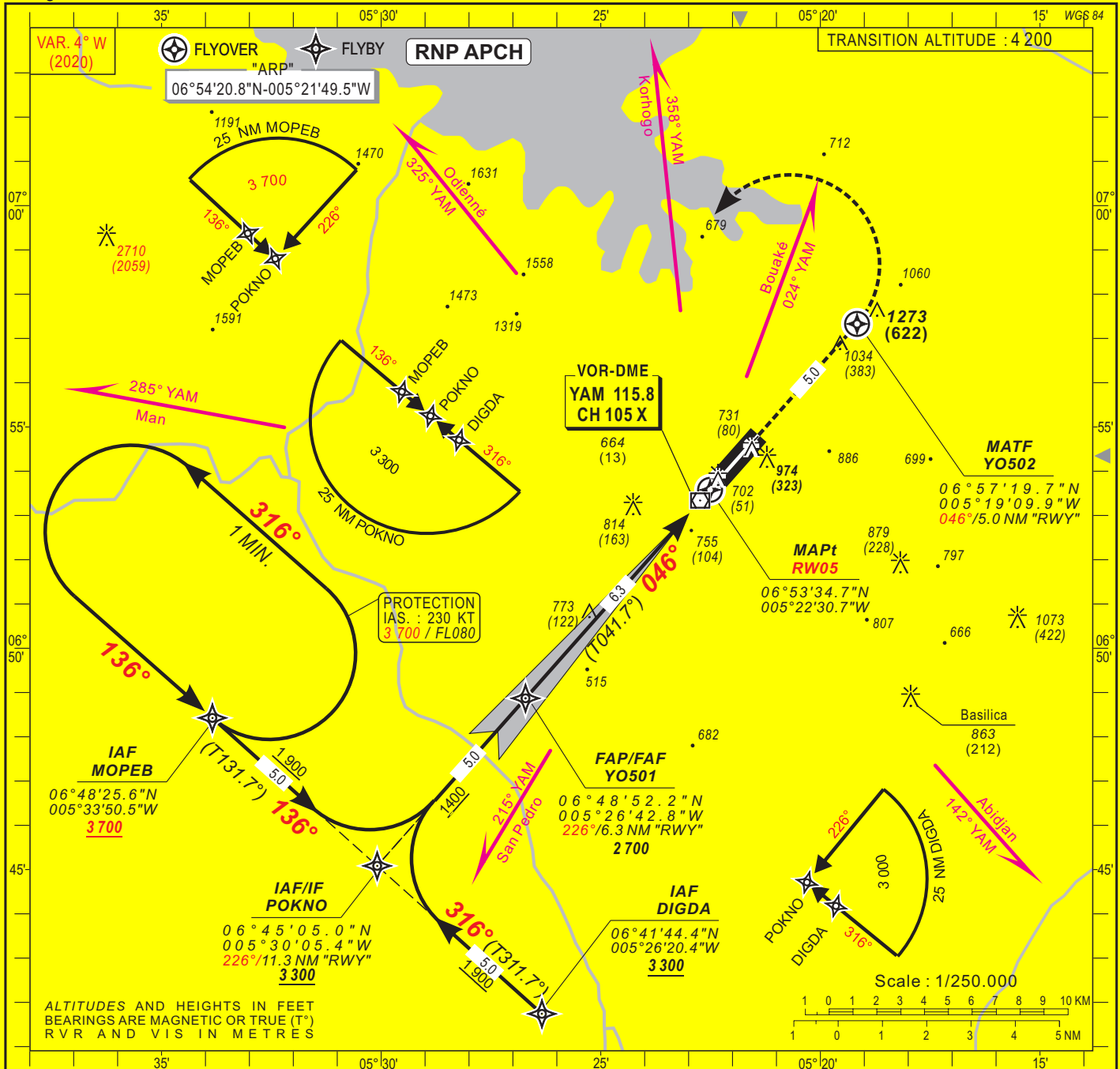
INSTRUMENT APPROACH CHART
Categories A-B-C-D

ELEV. : 697
THR : 651

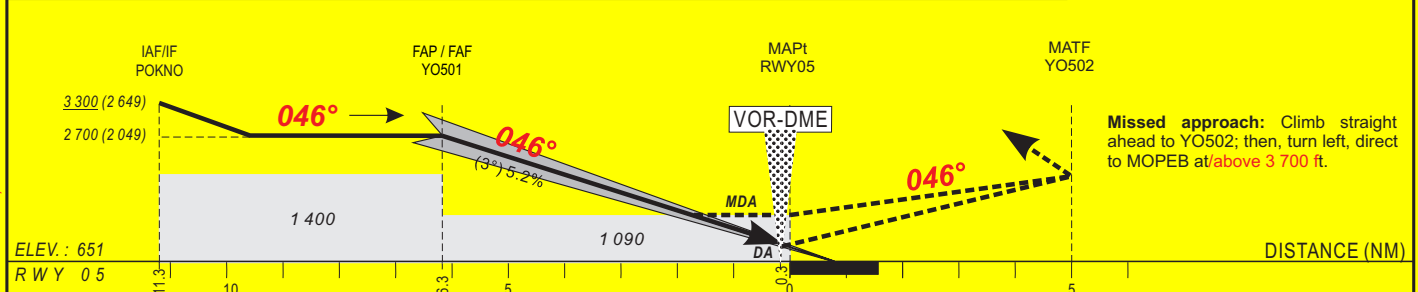
Yamoussoukro Tower: 118.5

YAMOOUSSOUKRO (DIYO)
ILS X or LOC X - RWY 05
IDENT ILS "YKS" FREQ 109.5

HEIGHTS RELATED TO THRESHOLD 05 ELEVATION



Distance to ILS-DME YKS (NM)	FAP/FAF	6	5	4	3	2	1	RW05	Notes: RDH is 15m.
Altitude (ft)	2700	2560	2240	1920	1600	1290	970		



CAT	Cat. I			LOC-DME			CIRCLING (*)			RVR for take-off: CAT. A - B - C : 400 CAT. D : 400
	OCA (OCH)	DA	DH	RVR	OCA (OCH)	MDA MDH	RVR	OCA (OCH)	MDA MDH	
A	832 (181)	860 (200)	1000	1089 (438)	1090 (440)	1500	1683 (986)	1690 (990)	1500	
B	844 (193)	860 (200)	1000	1089 (438)	1090 (440)	1500	1683 (986)	1690 (990)	1600	
C	852 (201)	860 (210)	1000	1089 (438)	1090 (440)	1800	1782 (1085)	1790 (1090)	2400	
D	863 (212)	870 (220)	1000	1089 (438)	1090 (440)	2000	1782 (1085)	1790 (1090)	3600	

Notes: - (*) Daytime only - OCH and MDH AAL

KT	FAP / THR		KT	MIN SEC
	6.3 NM	3.3 NM		
90	4 Min 12	140	2 Min 42	
100	3 Min 47	150	2 Min 31	
110	3 Min 26	160	2 Min 22	
120	3 Min 09	170	2 Min 13	
130	2 Min 54	180	2 Min 06	

12 AOUT 2021

AERONAUTICAL INFORMATION SERVICE - ASECNA

06AD2-DIYO-IAC-ILSX05

TABULAR DESCRIPTION

RNAV _(GNSS) RWY 05											
Serial Nr	Path Descriptor	Waypoint Ident.	Fly-Over	Course °M(°T)	Magnetic Variation	Distance (NM)	Turn Direction	Altitude (ft)	Speed Limit (ft)	VPA/TCH	Navigation Specification
010	IF	MOPEB	-	-	-	-	-	+3 700	-	-	RNP APCH
020	TF	POKNO	-	136(131.7)	-4.3	5.0	-	+3 300	-	-	RNP APCH
010	IF	DIGDA	-	-	-	-	-	+3 300	-	-	RNP APCH
020	TF	POKNO	-	316(311.7)	-4.3	5.0	-	+3 300	-	-	RNP APCH
010	IF	POKNO	-	-	-	-	-	+3 300	-	-	RNP APCH
020	TF	YO501	-	046(041.7)	-4.3	5.0	-	@2 700	-	-	RNP APCH
030	TF	RW05	Y	046(041.7)	-4.3	6.3	-	@701	-	-3.0/15	RNP APCH
010	IF	RW05	-	-	-	-	-	-	-	-	RNP APCH
020	CF	YO502	Y	046(041.7)	-4.3	5.0	L	-	-	-	RNP APCH
030	DF	MOPEB	-	-	-	-	-	+3 700	-230	-	RNP APCH
010	IF	MOPEB	-	-	-	-	-	+3700	-230	-	RNP APCH
020	HM	MOPEB	-	136(131.7)	-4.3	-	L	+3 700	-230	-	RNP APCH

WAYPOINT LIST

Waypoint	Latitude	Longitude	Fix name	Notes
MOPEB	06°48'25.6"N	005°33'50.5"W	IAF Left hand base	
POKNO	06°45'05.0"N	005°30'05.4"W	IAF Central	
DIGDA	06°41'44.4"N	005°26'20.4"W	IAF Right hand base	
YO501	06°48'52.2"N	005°26'42.8"W	FAF/FAP	
RW05	06°53'34.7"N	005°22'30.7"W	MAPt	
YO502	06°57'19.7"N	005°19'09.9"W	MATF	

CORRECTIONS: Waypoint identification, Holding

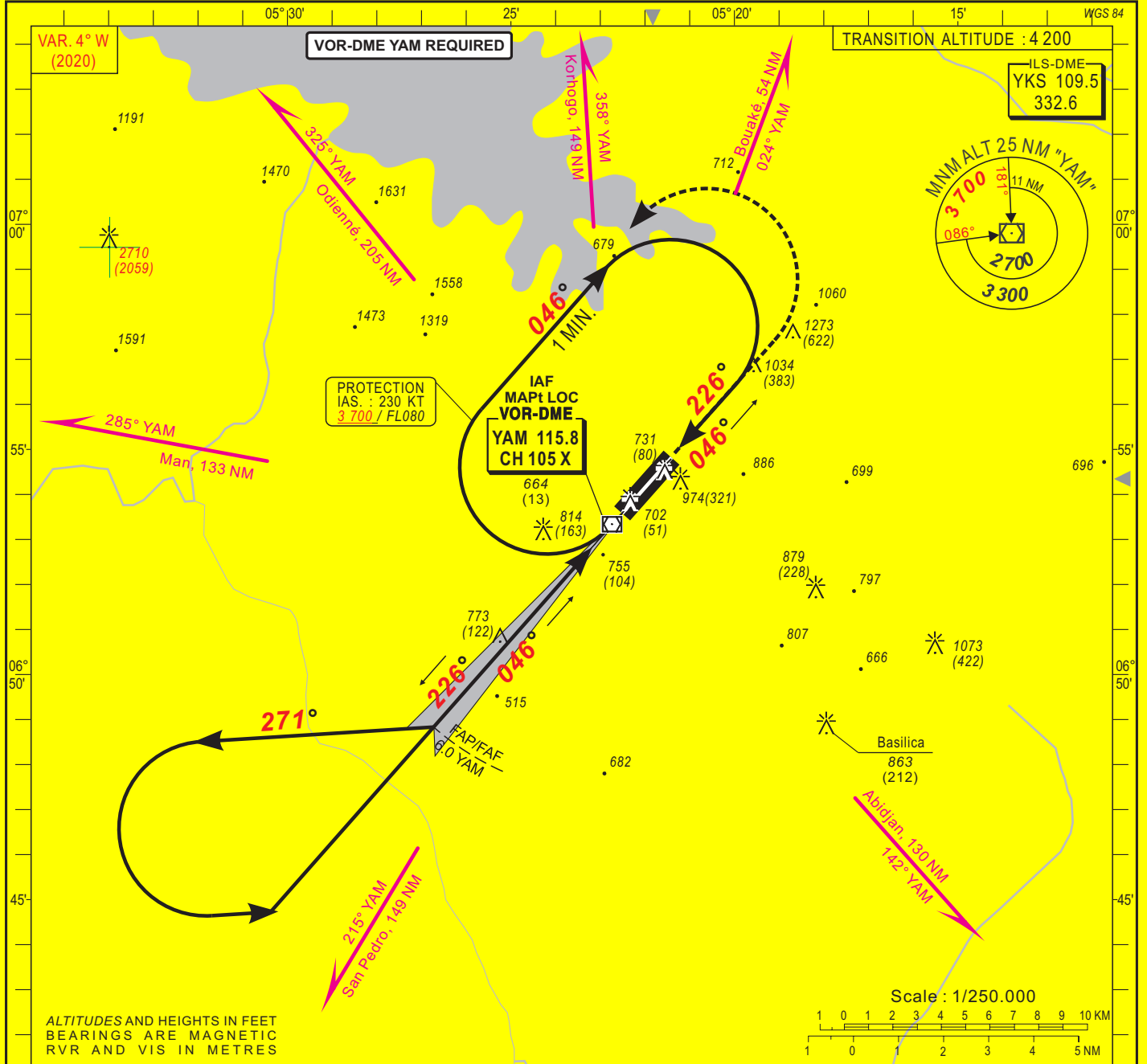
INSTRUMENT APPROACH CHART
Categories A-B-C-D

ELEV : 697
THR : 651

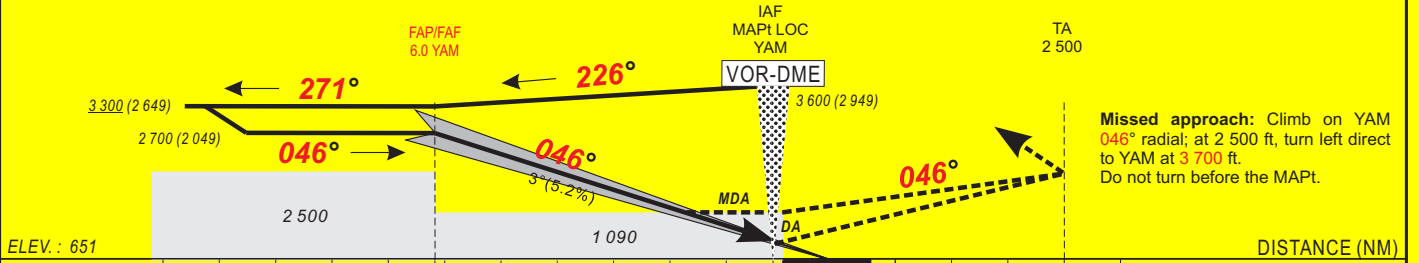
Yamoussoukro Tower: 118.5

YAMOOUSSOUKRO (DIYO)
ILS Y or LOC Y - RWY 05
IDENT ILS "YKS" FREQ 109.5

HEIGHTS RELATED TO THRESHOLD 05 ELEVATION



Distance to ILS-DME YKS (NM)	6	5	4	3	2	1	RW05	Notes : RDH is 15m.
Altitude (ft)	2 700	2 240	1 920	1 600	1 290	970		



ELEV. : 651
RWY 05

CAT	Cat. I				LOC-DME			CIRCLING (*)				RVR for take-off: CAT. A - B - C : 400 CAT. D : 400	
	OCA (OCH)	DA	DH	RVR	OCA (OCH)	MDA	MDH	RVR	OCA (OCH)	MDA	MDH		VIS
A	832 (181)	860 (200)		1000	1089 (438)	1090 (440)		1500	1683 (986)	1690 (990)		1500	Timing FAP / YKS 6.5 NM KT MIN SEC KT MIN SEC
B	844 (193)	860 (200)		1000	1089 (438)	1090 (440)		1500	1683 (986)	1690 (990)		1600	
C	852 (201)	860 (210)		1000	1089 (438)	1090 (440)		1800	1782 (1085)	1790 (1090)		2400	
D	863 (212)	870 (220)		1000	1089 (438)	1090 (440)		2000	1782 (1085)	1790 (1090)		3600	

Notes : - (*) Daytime only - OCH and MDH AAL

90	4	Min	20	140	2	Min	47
100	3	Min	54	150	2	Min	36
110	3	Min	33	160	2	Min	26
120	3	Min	15	170	2	Min	18
130	3	Min	00	180	2	Min	10

CORRECTIONS : Magnetic variation & bearings - MSA

12 AOUT 2021

AERONAUTICAL INFORMATION SERVICE - ASECNA

06AD2-DIYO-IAC-ILSY05

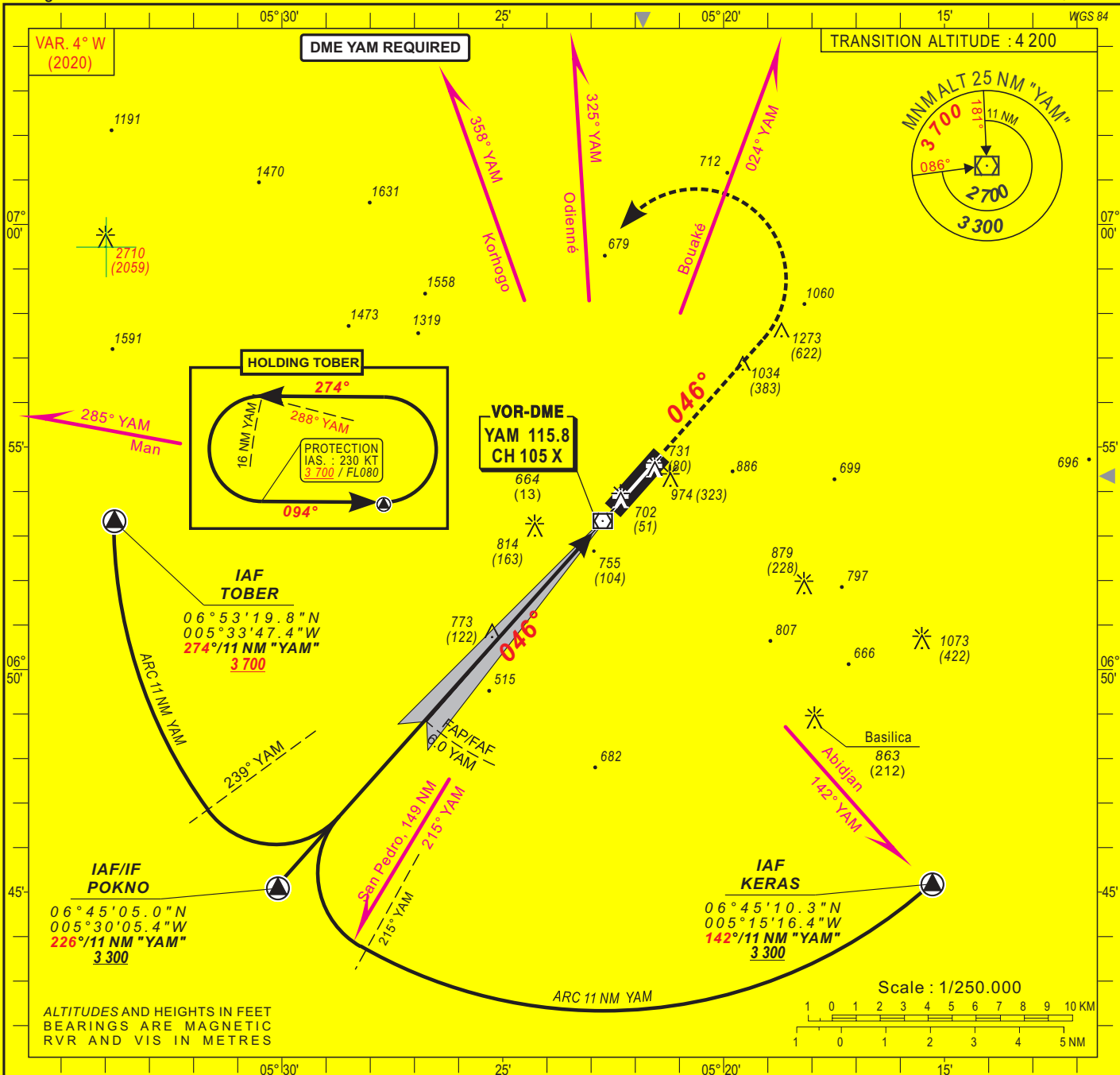
INSTRUMENT
APPROACH CHART
Categories A-B-C-D

ELV. : 697
THR : 651

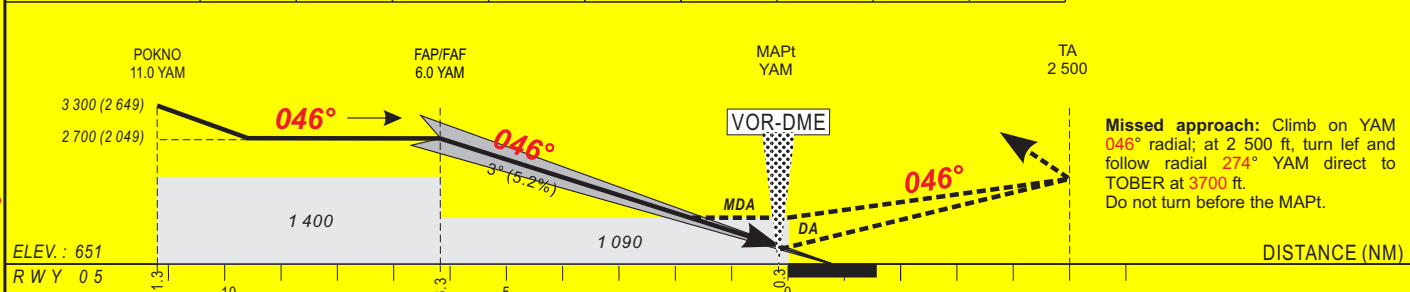
Yamoussoukro Tower: 118.5

YAMO USSOUKRO (DIYO)
ILS Z or LOC Z - RWY 05
IDENT ILS "YKS" FREQ 109.5

HEIGHTS RELATED TO THRESHOLD 05 ELEVATION



Distance to ILS-DME YKS (NM)	FAP/FAF	6	5	4	3	2	1	RW05	Notes : RDH is 15m.
Altitude (ft)	2 700	2 560	2 240	1 920	1 600	1 290	970		



CAT	Cat. I				LOC-DME			CIRCLING (*)				RVR for take-off: CAT. A - B - C : 400 CAT. D : 400
	OCA (OCH)	DA	DH	RVR	OCA (OCH)	MDA	MDH	RVR	OCA (OCH)	MDA	MDH	
A	832 (181)	860 (200)	1000	1000	1089 (438)	1090 (440)	1500	1683 (986)	1690 (990)	1500		
B	844 (193)	860 (200)	1000	1000	1089 (438)	1090 (440)	1500	1683 (986)	1690 (990)	1600		
C	852 (201)	860 (210)	1000	1000	1089 (438)	1090 (440)	1800	1782 (1085)	1790 (1090)	2400		
D	863 (212)	870 (220)	1000	1000	1089 (438)	1090 (440)	2000	1782 (1085)	1790 (1090)	3600		

Notes : - (*) Daytime only - OCH and MDH AAL
- Climbing sector: From radials 332° YAM to 234° YAM.

Timing FAF / THR 6.3 NM					
KT	MIN	SEC	KT	MIN	SEC
90	4	12	140	2	42
100	3	47	150	2	31
110	3	26	160	2	22
120	3	09	170	2	13
130	2	54	180	2	06

12 AOUT 2021

AERONAUTICAL INFORMATION SERVICE - ASEENA

06AD2-DIYO-IAC-ILSZ05