

Phone : +(221) 77.519.79.01

+ (221) 33.957.49.37

Fax : +(221) 33.820.06.00

AFTN : GOOOYNYX

E-mail : dakarbni@asecna.org

Web : <https://aim.asecna.aero>



AIRAC AIP SUP

NR 62/A/21GO

JUNE 17, 2021

BUREAU NOTAM INTERNATIONAL DE L'OUEST AFRICAIN

B.P. 8155 Aéroport International Blaise DIAGNE Dakar/Diass-SENEGAL

BENIN – BURKINA FASO – COTE D'IVOIRE – GUINEE BISSAU – MALI – MAURITANIE – NIGER – SENEGAL – TOGO

MISE A JOUR DES CARTES D'APPROCHE AUX INSTRUMENTS DE L'AERODROME D'ODIENNE.

UPDATE OF INSTRUMENT APPROACH CHARTS OF ODIENNE AERODROME

CÔTE D'IVOIRE

DATE D'ENTREE EN VIGUEUR / EFFECTIVE DATE	12 AOÛT à 0000 TU / 12 th AUGUST at 0000UTC
VALIDITE / VALIDITY	PERM

CE SUPPLEMENT ANNULE ET REMPLACE LE SUPPLEMENT NR 21/A/21GO
THIS SUPPLEMENT CANCELS AND REPLACES THE SUPPLEMENT NR 21/A /21GO

Les cartes ci-dessous listées, ont été mises à jour

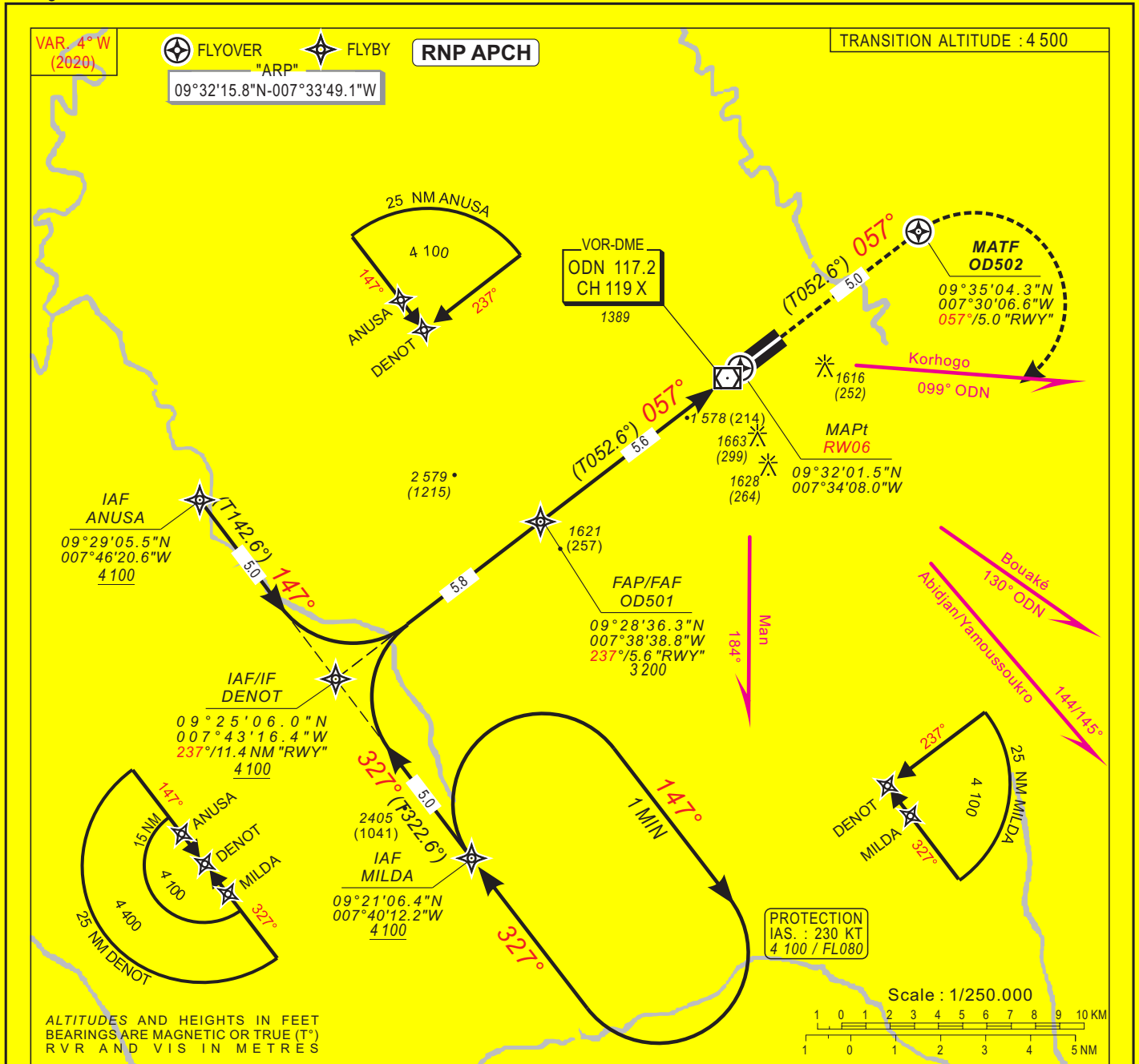
The charts listed below, have been updated

06AD2-DIOD-IAC-RNAV06

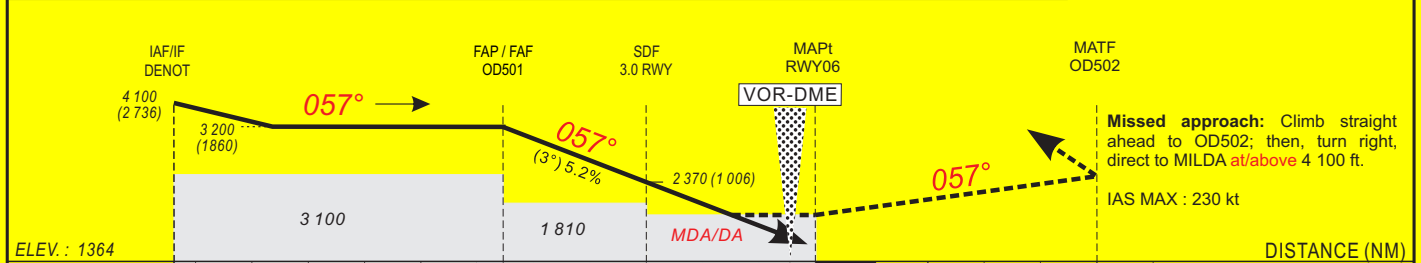
06AD2-DIOD-IAC-RNAV06-DATA

06AD2-DIOD-IAC-RNAV24

06AD2-DIOD-IAC-RNAV24-DATA



Distance to THR (NM)	FAP/FAF		6	5	4	3	2	1	Notes : - RDH : 15 m - Minimum temperature : 10°C
Altitude (ft)	3 200			3 010	2 690	2 370	2 050	1 740	



CAT	LNAV/VNAV (1)				LNAV				CIRCLING (2)				RVR for take-off: CATA - B - C : 400
	OCA (OCH)	DA	DH	RVR	OCA (OCH)	MDA	MDH	RVR	OCA (OCH)	MDA	MDH	VIS	
A	1743 (379)	1750 (380)	1500	1760 (396)	1760 (400)	1500	1958 (591)	1960 (600)	1500				Timing FAF / THR 5.6 NM KT MIN SEC 90 3 Min 44 140 2 Min 24 100 3 Min 22 150 2 Min 14 110 3 Min 03 160 2 Min 06 120 2 Min 48 170 130 2 Min 35 180
B	1743 (379)	1750 (380)	1500	1760 (396)	1760 (400)	1500	1958 (591)	1960 (600)	1600				
C	1743 (379)	1750 (380)	1800	1760 (396)	1760 (400)	1800	2057 (690)	2060 (690)	2400				
D													

Notes : - (1) Not authorized with a remote QNH.
- (2) Daytime only - OCH and MDH AAL
- Timing not authorized for defining MAPt

INSTRUMENT ELEV : 1 367 FT
 APPROACH CHART THR ELEV: 1 364 FT
 Categories A-B-C HEGHTS RELATED TO THR 06 ELEV

AFIS: 118.8

ODIENNE (DIOD)

RNAV_(GNSS) RWY 06

TABULAR DESCRIPTION

RNAV _(GNSS) RWY 06											
Serial Nr	Path Descriptor	Waypoint Ident.	Fly-Over	Course °M(°T)	Magnetic Variation	Distance (NM)	Turn Direction	Altitude (ft)	Speed Limit (ft)	VPA/TCH	Navigation Specification
010	IF	ANUSA	-	-	-	-	-	+4 100	-	-	RNP APCH
020	TF	DENOT	-	147(142.6)	-4.3	5.0	-	+4 100	-	-	RNP APCH
010	IF	MILDA	-	-	-	-	-	+4 100	-	-	RNP APCH
020	TF	DENOT	-	327(322.6)	-4.3	5.0	-	+4 100	-	-	RNP APCH
010	IF	DENOT	-	-	-	-	-	+4 100	-	-	RNP APCH
020	TF	OD501	-	057(052.6)	-4.3	5.8	-	@3 200	-	-	RNP APCH
030	TF	RW06	Y	057(052.6)	-4.3	5.6	-	@1 414	-	-3.0/15	RNP APCH
010	IF	RW06	-	-	-	-	-	-	-	-	RNP APCH
020	CF	OD502	Y	057(052.6)	-4.3	5.0	R	-	-230	-	RNP APCH
030	DF	MILDA	-	-	-	-	-	+4 100	-230	-	RNP APCH
010	IF	MILDA	-	-	-	-	-	+4 100	-230	-	RNP APCH
020	HM	MILDA	-	327(322.6)	-4.3	-	R	+4 100	-230	-	RNP APCH

WAYPOINT LIST

Waypoint	Latitude	Longitude	Fix name	Notes
ANUSA	09°29'05.5"N	007°46'20.6"W	IAF Left hand base	
DENOT	09°25'06.0"N	007°43'16.4"W	IAF Central	
MILDA	09°21'06.4"N	007°40'12.2"W	IAF Right hand base	
OD501	09°28'36.3"N	007°38'38.8"W	FAF/FAP	
RW06	09°32'01.5"N	007°34'08.0"W	MAPt	
OD502	09°35'04.4"N	007°30'06.6"W	MATF	

CORRECTIONS: Missed approach (Serial Nr 30) altitude, Holding

12 AOUT 2021

AERONAUTICAL INFORMATION SERVICE - ASECNA

06AD2-DIOD-IAC-RNAV06-DATA

Verso

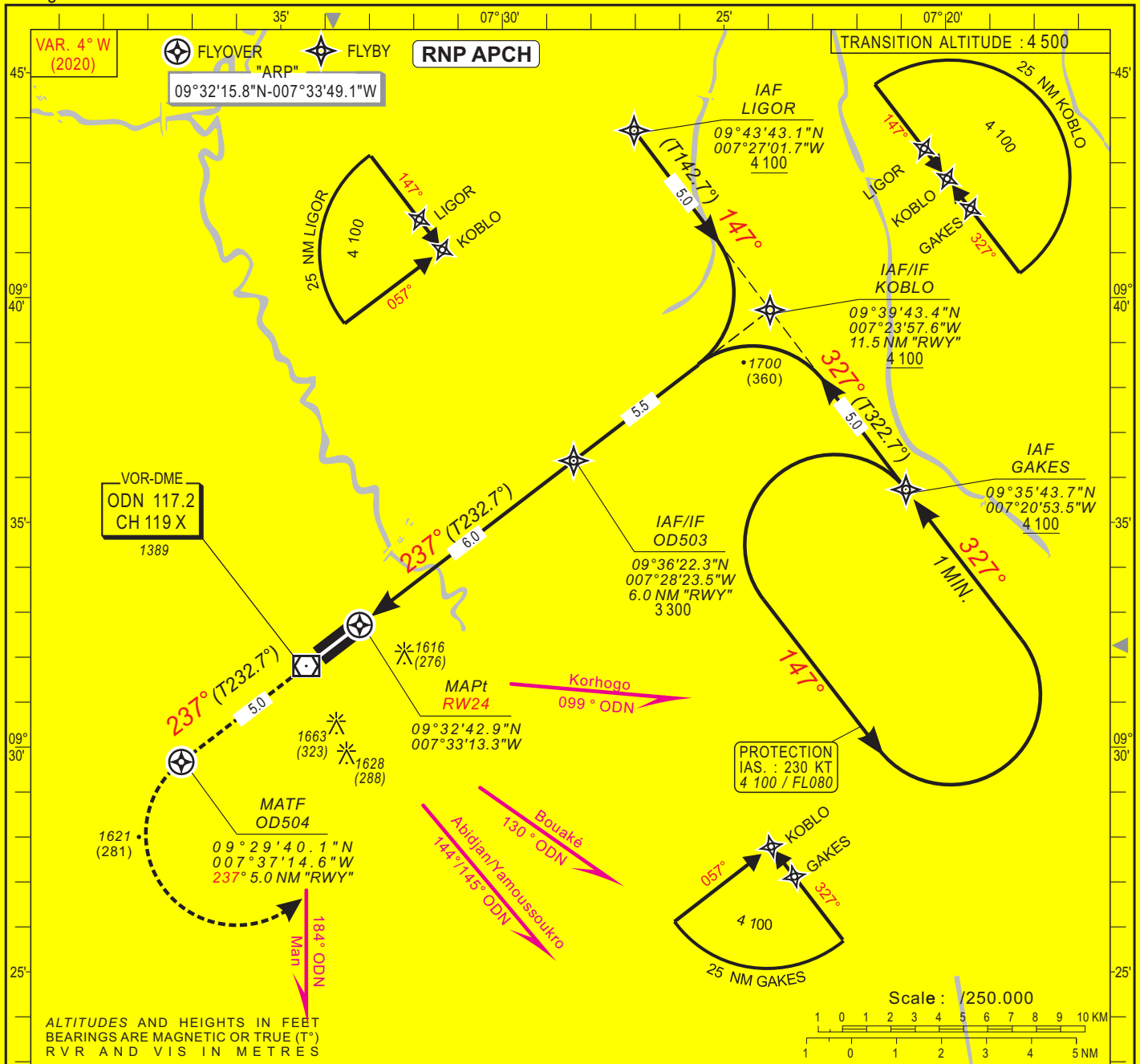
INSTRUMENT
APPROACH CHART
Categories A-B-C

ELEV. : 1 367
THR : 1 340

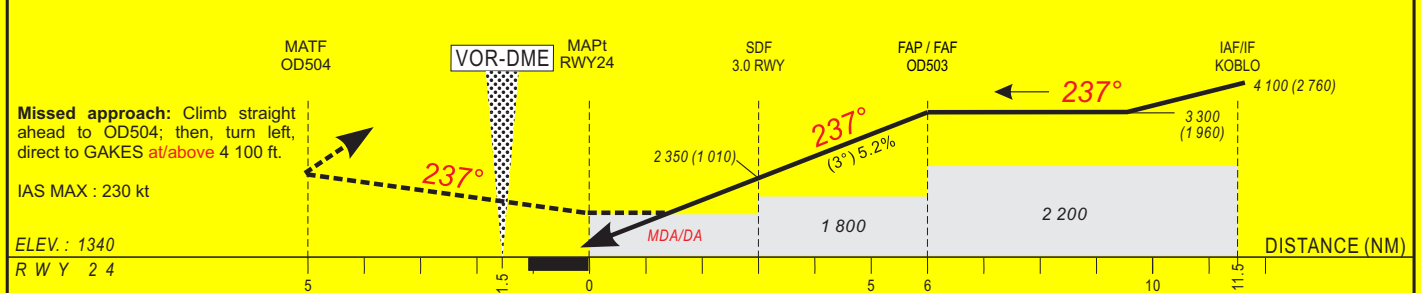
AFIS : 118.8

ODIENNE (DIOD)
RNAV(GNSS) RWY 24

HEIGHTS RELATED TO THRESHOLD 24 ELEVATION



Distance to THR (NM)	FAP/FAF		6	5	4	3	2	1	Notes: - RDH : 15 m - Minimum temperature : 10 °C
Altitude (ft)	3 300		3 300	2 990	2 670	2 350	2 030	1 710	



CAT	LNAV/VNAV (1)			LNAV			CIRCLING (2)			RVR for take-off: CATA - B - C : 400		
	OCA (OCH)	DA	DH	RVR	OCA (OCH)	MDA	MDH	RVR	OCA (OCH)		MDA	MDH
A	1723 (383)	1730 (390)	1500	1740 (400)	1740 (400)	1500	1958 (591)	1960 (600)	1500			
B	1723 (383)	1730 (390)	1500	1740 (400)	1740 (400)	1500	1958 (591)	1960 (600)	1600			
C	1723 (383)	1730 (390)	1800	1740 (400)	1740 (400)	1800	2057 (690)	2060 (690)	2400			
D												

Notes : - (1) Not authorized with a remote QNH.
- (2) Daytime only - OCH and MDH AAL.
- Timing not authorized for defining MAPt.

Timing		FAF / THR 6.0 NM	
KT	MIN SEC	KT	MIN SEC
90	4 Min 00	140	2 Min 34
100	3 Min 36	150	2 Min 24
110	3 Min 16	160	2 Min 15
120	3 Min 00	170	
130	2 Min 46	180	

12 AOUT 2021

AERONAUTICAL INFORMATION SERVICE - ASECNA

06AD2-DIOD-IAC-RNAV24

INSTRUMENT ELEV : 1 367 FT
 APPROACH CHART THR ELEV: 1 340 FT
 Categories A-B-C HEGHTS RELATED TO THR 24 ELEV

AFIS: 118.8

ODIENNE (DIOD)

RNAV_(GNSS) RWY 24

TABULAR DESCRIPTION

RNAV _(GNSS) RWY 24											
Serial Nr	Path Descriptor	Waypoint Ident.	Fly-Over	Course °M(°T)	Magnetic Variation	Distance (NM)	Turn Direction	Altitude (ft)	Speed Limit (ft)	VPA/TCH	Navigation Specification
010	IF	GAKES	-	-	-	-	-	+4 100	-	-	RNP APCH
020	TF	KOBLO	-	237(232.7)	-4.3	5.0	-	+4 100	-	-	RNP APCH
010	IF	LIGOR	-	-	-	-	-	+4 100	-	-	RNP APCH
020	TF	KOBLO	-	147(142.7)	-4.3	5.0	-	+4 100	-	-	RNP APCH
010	IF	KOBLO	-	-	-	-	-	+4 100	-	-	RNP APCH
020	TF	OD503	-	237(232.7)	-4.3	5.5	-	@3 300	-	-	RNP APCH
030	TF	RW24	Y	237(232.7)	-4.3	6.0	-	@1 390	-	-3.0/15	RNP APCH
010	IF	RW24	-	-	-	-	-	-	-	-	RNP APCH
020	CF	OD504	Y	237(232.7)	-4.3	5.0	L	-	-230	-	RNP APCH
030	DF	GAKES	-	-	-	-	-	+4 100	-230	-	RNP APCH
010	IF	GAKES	-	-	-	-	-	+4 100	-230	-	RNP APCH
020	HM	GAKES	-	327(322.7)	-4.3	-	L	+4 100	-230	-	RNP APCH

WAYPOINT LIST

Waypoint	Latitude	Longitude	Fix name	Notes
GAKES	09°35'43.7"N	007°20'53.5"W	IAF Left hand base	
KOBLO	09°39'43.4"N	007°23'57.6"W	IAF Central	
LIGOR	09°43'43.1"N	007°27'01.7"W	IAF Right hand base	
OD503	09°36'22.3"N	007°28'23.5"W	FAF/FAP	
RW24	09°32'42.9"N	007°33'13.3"W	MAPt	
OD504	09°29'40.1"N	007°37'14.6"W	MATF	

CORRECTIONS: Serial Nr for HM, Holding, Missed approach (Serial Nr: 30), altitude

15 JUILLET 2021

AERONAUTICAL INFORMATION SERVICE - ASECNA

06AD2-DIOD-IAC-RNAV24-DATA

Verso