

Phone : +(221) 77.519.79.01

+ (221) 33.957.49.37

Fax : +(221) 33.820.06.00

AFTN : GOOOYNYX

E-mail : dakarbni@asecna.org

Web : <https://aim.asecna.aero>



AIRAC AIP SUP

NR 61/A/21GO

JUNE 17, 2021

BUREAU NOTAM INTERNATIONAL DE L'OUEST AFRICAIN

B.P. 8155 Aéroport International Blaise DIAGNE Dakar/Diass-SENEGAL

BENIN – BURKINA FASO – COTE D'IVOIRE – GUINEE BISSAU – MALI – MAURITANIE – NIGER – SENEGAL – TOGO

MISE A JOUR DES CARTES D'APPROCHE AUX INSTRUMENTS DE L'AERODROME DE MAN.

UPDATE OF INSTRUMENT APPROACH CHARTS OF MAN AERODROME

CÔTE D'IVOIRE

DATE D'ENTREE EN VIGUEUR / EFFECTIVE DATE	12 AOÛT à 0000 TU / 12 th AUGUST at 0000UTC
VALIDITE / VALIDITY	PERM

CE SUPPLEMENT ANNULE ET REMPLACE LE SUPPLEMENT NR 20/A/21GO
THIS SUPPLEMENT CANCELS AND REPLACES THE SUPPLEMENT NR 20/A /21GO

Les cartes ci-dessous listées, ont été mises à jour

The charts listed below, have been updated

06AD2-DIMN-IAC-RNAV03

06AD2-DIMN-IAC-RNAV03-DATA

06AD2-DIMN-IAC-RNAV21

06AD2-DIMN-IAC-RNAV21-DATA

INSTRUMENT APPROACH CHART
Categories A-B-C

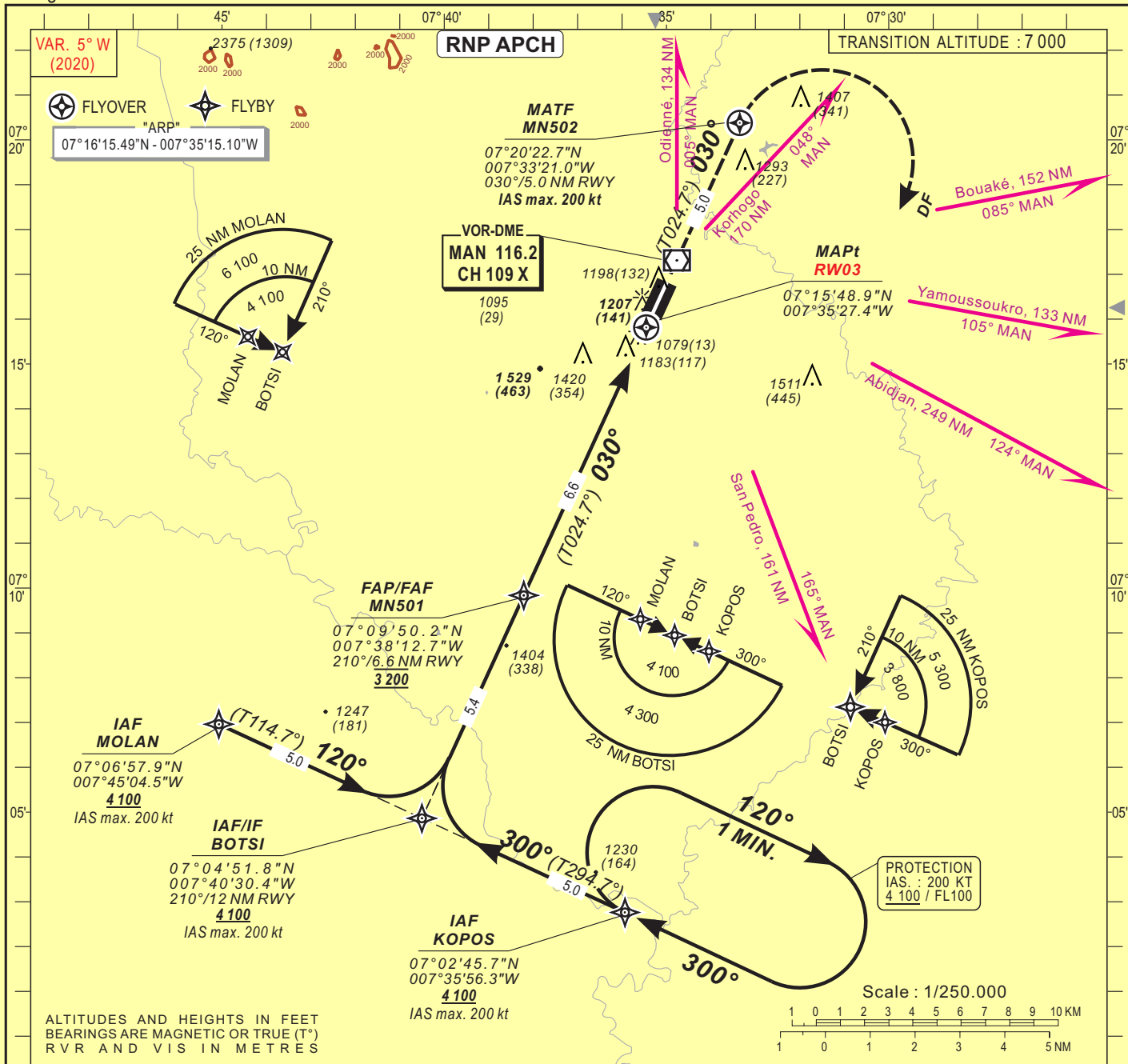
ELEV. : 1 090
THR : 1 066

AFIS : 118.4

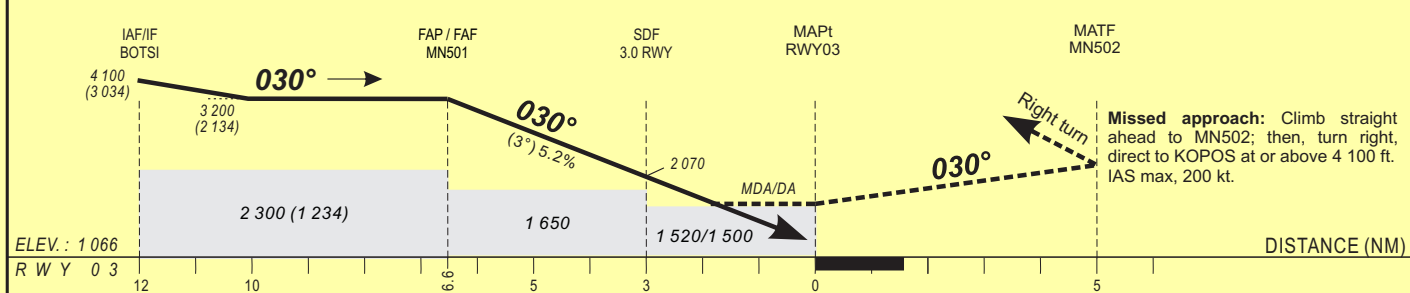
MAN (DIMN)

HEIGHTS RELATED TO THRESHOLD 03 ELEVATION

RNAV(GNSS) RWY 03



Distance to THR (NM)	FAP/FAF		6	5	4	3	2	1	Notes: - RDH: 15 m - Minimum temperature: 10 °C
Altitude (ft)	3 200		3 030	2 710	2 390	2 070	1 760	1 440	



CAT	LNAV/VNAV (1)			LNAV			CIRCLING (2)			RVR for take-off: CATA - B - C : 400		
	OCA (OCH)	DA	DH	RVR	OCA (OCH)	MDA	MDH	RVR	OCA (OCH)		MDA	MDH
A	1491 (425)	1500 (430)	1500	1500	1515 (449)	1520 (450)	1500	1500	1789 (699)	1790 (700)	1500	
B	1491 (425)	1500 (430)	1500	1500	1515 (449)	1520 (450)	1500	1500	1789 (699)	1790 (700)	1600	
C	1491 (425)	1500 (430)	1500	1500	1515 (449)	1520 (450)	2000	2000	2003 (913)	2010 (920)	2400	
D												

Timing FAP / THR 6.6 NM

KT	MIN	SEC	KT	MIN	SEC
90	4	Min 24	140	2	Min 50
100	3	Min 58	150	2	Min 38
110	3	Min 36	160	2	Min 29
120	3	Min 18	170		
130	3	Min 03	180		

Notes: - (1) Not authorized with a remote QNH.
- (2) Daytime only - Forbidden on the South-West, West and North-West of the field - OCH and MDH AAL

CORRECTIONS : Magnetic variation

I N S T R U M E N T ELEV : 1 090 FT
A P P R O A C H C H A R T T H R E L E V : 1 066 FT
 Categories A-B-C H E G H T S R E L A T E D T O T H R 03 E L E V

A F I S : 118.4

MAN (DIMN)

RNAV_(GNSS) RWY 03

TABULAR DESCRIPTION

RNAV _(GNSS) RWY 03											
Serial Nr	Path Descriptor	Waypoint Ident.	Fly-Over	Course °M(°T)	Magnetic Variation	Distance (NM)	Turn Direction	Altitude (ft)	Speed Limit (ft)	VPA/TCH	Navigation Specification
010	IF	MOLAN	-	-	-	-	-	+4 100	-200	-	RNP APCH
020	TF	BOTSI	-	120(114.7)	-4.9	5.0	-	+4 100	-200	-	RNP APCH
010	IF	KOPOS	-	-	-	-	-	+4 100	-200	-	RNP APCH
020	TF	BOTSI	-	300(294.7)	-4.9	5.0	-	+4 100	-200	-	RNP APCH
010	IF	BOTSI	-	-	-	-	-	+4 100	-	-	RNP APCH
020	TF	MN501	-	030(024.7)	-4.9	5.4	-	@3 200	-	-	RNP APCH
030	TF	RW03	Y	030(024.7)	-4.9	6.6	-	@1 116	-	-3.0/15	RNP APCH
010	IF	RW03	-	-	-	-	-	-	-	-	RNP APCH
020	CF	MN502	Y	030(024.7)	-4.9	5.0	R	-	-200	-	RNP APCH
030	DF	KOPOS	-	-	-	-	-	+4 100	-200	-	RNP APCH
010	IF	KOPOS	-	-	-	-	-	+4 100	-200	-	RNP APCH
020	HM	KOPOS	-	300(294.7)	-4.9	-	R	+4 100	-200	-	RNP APCH

WAYPOINT LIST

Waypoint	Latitude	Longitude	Fix name	Notes
MOLAN	07°06'57.9"N	007°45'04.5"W	IAF Left hand base	
BOTSI	07°04'51.8"N	007°40'30.4"W	IAF Central	
KOPOS	07°02'45.7"N	007°35'56.3"W	IAF Right hand base	
MN501	07°09'50.2"N	007°38'12.7"W	FAF/FAP	
RW03	07°15'48.9"N	007°35'27.4"W	MAPt	
MN502	07°20'22.7"N	007°33'21.0"W	MATF	

CORRECTIONS: Holding

12 AOUT 2021

AERONAUTICAL INFORMATION SERVICE - ASECNA

06AD2-DIMN-IAC-RNAV03-DATA

Verso

INSTRUMENT APPROACH CHART
Categories A-B-C

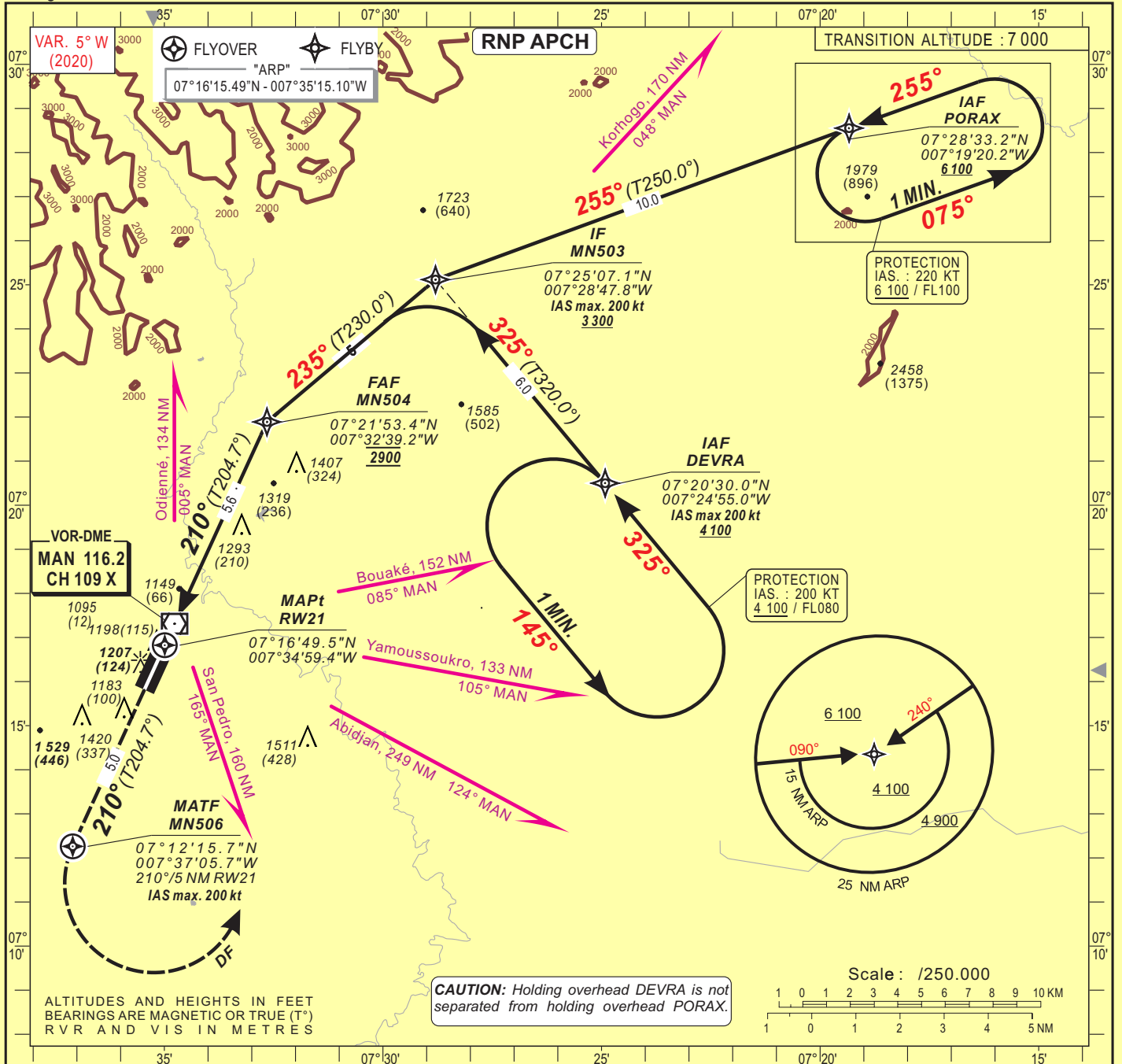
ELEV. : 1 090
THR : 1 083

AFIS : 118.4

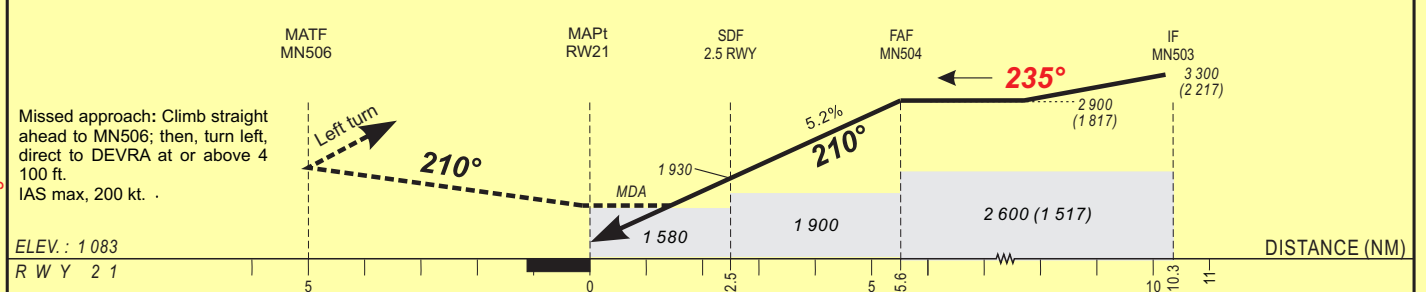
MAN (DIMN)

HEIGHTS RELATED TO THRESHOLD 21 ELEVATION

RNAV(GNSS) RWY 21



Distance to THR (NM)	FAF	1	2	3	4	5	6	Notes :
Altitude (ft)	2 900	1 450	1 770	2 090	2 410	2 730	-	



CAT	LNAV				CIRCLING (*)				RVR for take-off: CATA - B - C : 400
	OCA (OCH)	MDA	MDH	RVR	OCA (OCH)	MDA	MDH	VIS	
A	1571 (488)	1580 (490)	1500	1500	1789 (699)	1790 (700)	1500	1500	Timing FAF / THR 5.6 NM
B	1571 (488)	1580 (490)	1500	1500	1789 (699)	1790 (700)	1600	1600	
C	1571 (488)	1580 (490)	2000	2000	2003 (913)	2010 (920)	2400	2400	
D									

Notes : - (*) Daytime only - Forbidden on the South-West, West and North-West of the field - OCH and MDH AAL

TABULAR DESCRIPTION

RNAV _(GNSS) RWY 21											
Serial Nr	Path Descriptor	Waypoint Ident.	Fly-Over	Course °M(°T)	Magnetic Variation	Distance (NM)	Turn Direction	Altitude (ft)	Speed Limit (ft)	VPA/TCH	Navigation Specification
010	IF	DEVRA	-	-	-	-	-	+4 100	-	-	RNP APCH
020	TF	MN503	-	325(320.0)	-4.9	6.0	-	+3 300	-200	-	RNP APCH
010	IF	PORAX	-	-	-	-	-	+6 100	-200	-	RNP APCH
020	TF	MN503	-	255(250.0)	-4.9	10.0	-	+3 300	-200	-	RNP APCH
010	IF	MN503	-	-	-	-	-	+3 300	-	-	RNP APCH
020	TF	MN504	-	235(230.0)	-4.9	5.0	-	@2 900	-	-	RNP APCH
030	TF	RW21	Y	210(204.7)	-4.9	5.6	-	@1 133	-	-3.0/15	RNP APCH
010	IF	RW21	-	-	-	-	-	-	-	-	RNP APCH
020	CF	MN506	Y	210(204.7)	-4.9	5.0	L	-	-200	-	RNP APCH
030	DF	DEVRA	-	-	-	-	-	+4 100	-200	-	RNP APCH
010	IF	DEVRA	-	-	-	-	-	+4 100	-200	-	RNP APCH
020	HM	DEVRA	-	325(320.0)	-4.9	-	L	+4 100	-200	-	RNP APCH
010	IF	PORAX	-	-	-	-	-	+6 100	-220	-	RNP APCH
020	HM	PORAX	-	255(250.0)	-4.9	-	L	+6 100	-220	-	RNP APCH

WAYPOINT LIST

Waypoint	Latitude	Longitude	Fix name	Notes
DEVRA	07°20'30.0"N	007°24'55.0"W	IAF Left hand base	
MN503	07°25'07.1"N	007°28'47.8"W	IF	
PORAX	07°28'33.2"N	007°19'20.2"W	IAF	
MN504	07°21'53.4"N	007°32'39.2"W	FAF	
RW21	07°16'49.5"N	007°34'59.4"W	MAPt	
MN506	07°12'15.7"N	007°37'05.7"W	MATF	

CORRECTIONS: Magnetic variation and bearing. Holding DEVRA