

Phone : +(221) 77.519.79.01  
          +(221) 33.957.49.37  
Fax :     +(221) 33.820.06.00  
AFTN :   GOOOYNYX  
E-mail :  dakarbni@asecna.org  
Web :    <https://aim.asecna.aero>



**AIRAC AIP SUP**  
**NR 60/A/21GO**  
**JUNE 17 , 2021**

**BUREAU NOTAM INTERNATIONAL DE L'OUEST AFRICAIN**  
B.P. 8155 Aéroport International Blaise DIAGNE Dakar/Diass-SENEGAL

**BENIN – BURKINA FASO – COTE D'IVOIRE – GUINEE BISSAU – MALI – MAURITANIE – NIGER – SENEGAL – TOGO**

**MISE A JOUR DES CARTES D'APPROCHE AUX INSTRUMENTS DE L'AERODROME DE KORHOGO.**  
**UPDATE OF INSTRUMENT APPROACH CHARTS OF KORHOGO AERODROME**

**CÔTE D'IVOIRE**

DATE D'ENTREE EN VIGUEUR / EFFECTIVE DATE	12 AOUT à 0000 TU / 12 <sup>th</sup> AUGUST at 0000UTC
VALIDITE / VALIDITY	PERM

**CE SUPPLEMENT ANNULE ET REMPLACE LE SUPPLEMENT NR 19/A/21GO**  
**THIS SUPPLEMENT CANCELS AND REPLACES THE SUPPLEMENT NR 19/A /21GO**

Les cartes ci-dessous listées, ont été mises à jour	<i>The charts listed below, have been updated</i>
---	---

- 06AD2-DIKO-IAC-RNAV08
- 06AD2-DIKO-IAC-RNAV08-DATA
- 06AD2-DIKO-IAC-RNAV26
- 06AD2-DIKO-IAC-RNAV26-DATA

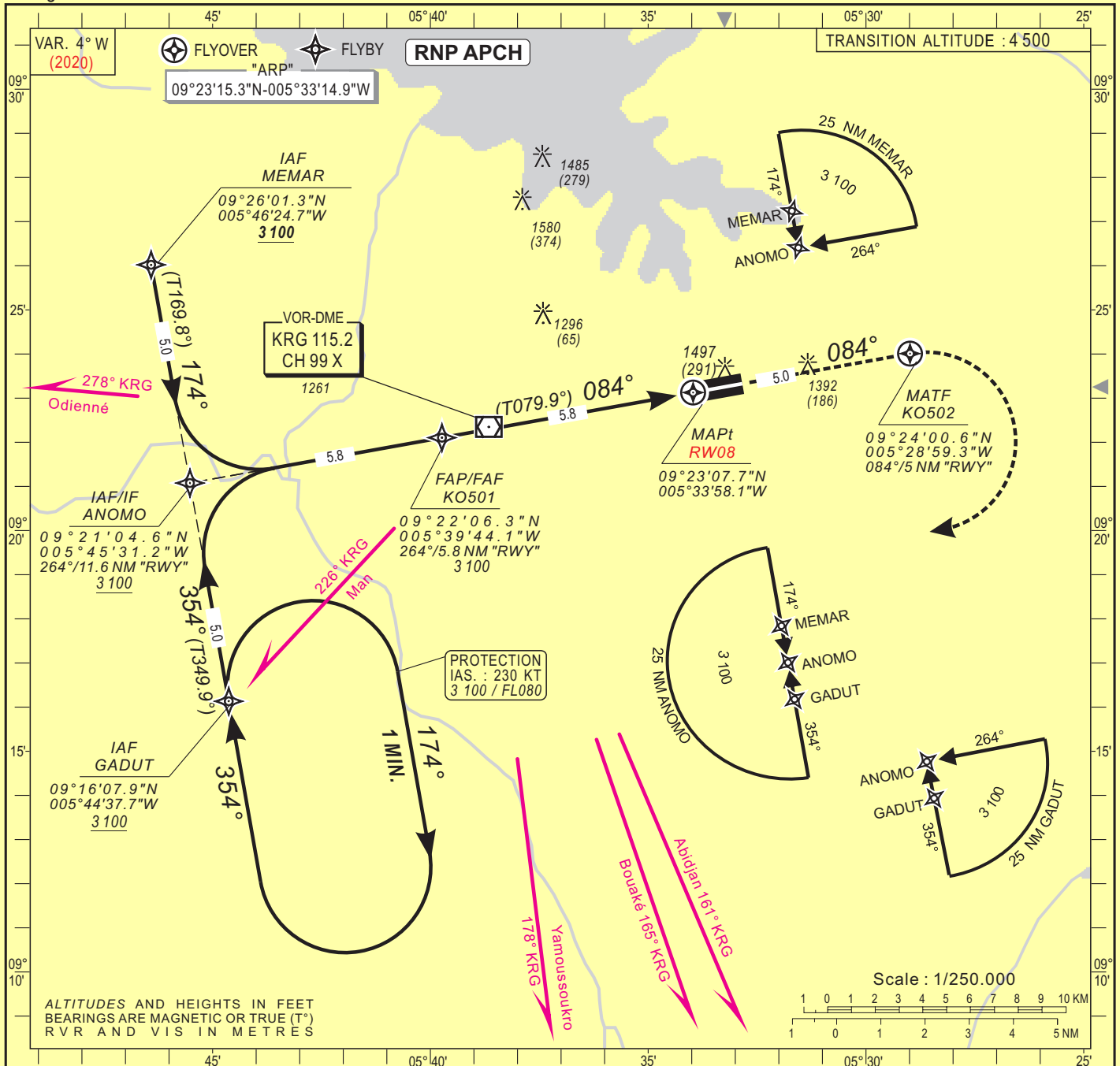
INSTRUMENT  
APPROACH CHART  
Categories A-B-C

ELEV. : 1213  
THR : 1206

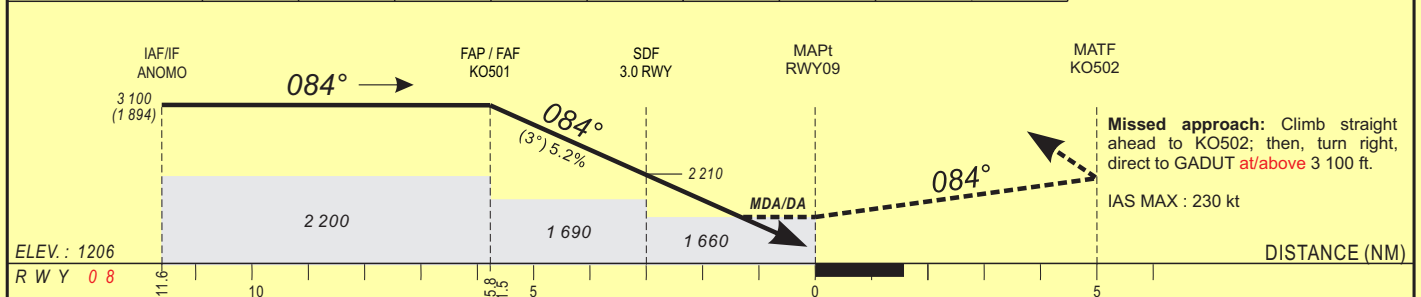
AFIS : 118.2

KORHOGO (DIKO)  
RNAV(GNSS) RWY 08

HEIGHTS RELATED TO THRESHOLD 09 ELEVATION



Distance to THR (NM)	FAP/FAF	6	5	4	3	2	1	Notes
Altitude (ft)	3100		2850	2530	2210	1900	1580	- RDH : 15 m - Minimum temperature : 10°C



CAT	LNAV/VNAV (1)				LNAV			CIRCLING (2)				RVR for take-off: CAT A - B - C : 400
	OCA (OCH)	DA	DH	RVR	OCA (OCH)	MDA	MDH	RVR	OCA (OCH)	MDA	MDH	
A	1552 (346)	1560 (350)	1500	1500	1659 (453)	1660 (460)	1500	1500	1792 (579)	1800 (580)	1500	
B	1552 (346)	1560 (350)	1500	1500	1659 (453)	1660 (460)	1500	1500	1792 (579)	1800 (580)	1600	
C	1552 (346)	1560 (350)	1800	1500	1659 (453)	1660 (460)	2000	2000	2160 (947)	2160 (950)	2400	
D												

Timing		FAP / THR	
		5.8 NM	
KT	MIN SEC	KT	MIN SEC
90	3 Min 52	140	2 Min 29
100	3 Min 29	150	2 Min 19
110	3 Min 10	160	2 Min 10
120	2 Min 54	170	
130	2 Min 41	180	

Notes : - (1) Not authorized with a remote QNH.  
- (2) Daytime only - South of the field - OCH and MDH AAL

PROCEDURE TO BE USED ACCORDING TO  
DECISION N°185 / ANAC / NOA DATED ON  
12 DECEMBER 2008

CORRECTIONS : Missed approach instruction

## TABULAR DESCRIPTION

RNAV <sub>(GNSS)</sub> RWY 08											
Serial Nr	Path Descriptor	Waypoint Ident.	Fly-Over	Course °M(°T)	Magnetic Variation	Distance (NM)	Turn Direction	Altitude (ft)	Speed Limit (ft)	VPA/TCH	Navigation Specification
010	IF	MEMAR	-	-	-	-	-	+3 100	-	-	RNP APCH
020	TF	ANOMO	-	174(169.8)	-3.7	5.0	-	+3 100	-	-	RNP APCH
010	IF	GADUT	-	-	-	-	-	+3 100	-	-	RNP APCH
020	TF	ANOMO	-	354(349.9)	-3.7	5.0	-	+3 100	-	-	RNP APCH
010	IF	ANOMO	-	-	-	-	-	+3 100	-	-	RNP APCH
020	TF	KO501	-	084(079.9)	-3.7	5.8	-	@3 100	-	-	RNP APCH
030	TF	RW08	Y	084(079.9)	-3.7	5.8	-	@1 256	-	-3.0/15	RNP APCH
010	IF	RW08	-	-	-	-	-	-	-	-	RNP APCH
020	CF	KO502	Y	084(079.9)	-3.7	5.0	R	-	-230	-	RNP APCH
030	DF	GADUT	-	-	-	-	-	+3 100	-230	-	RNP APCH
010	IF	GADUT	-	-	-	-	-	+3 100	-230	-	RNP APCH
020	HM	GADUT	-	354(349.9)	-3.7	-	R	+3 100	-230	-	RNP APCH

## WAYPOINT LIST

Waypoint	Latitude	Longitude	Fix name	Notes
MEMAR	09°26'01.3"N	005°46'24.7"W	IAF Left hand base	
ANOMO	09°21'04.6"N	005°45'31.2"W	IAF Central	
GADUT	09°16'07.9"N	005°44'37.7"W	IAF Right hand base	
KO501	09°22'06.3"N	005°39'44.1"W	FAF/FAP	
RW08	09°23'07.7"N	005°33'58.1"W	MAPt	
KO502	09°24'00.6"N	005°28'59.3"W	MATF	

CORRECTIONS: Waypoint identification, Holding, Missed approach (Serial Nr. 30), altitude

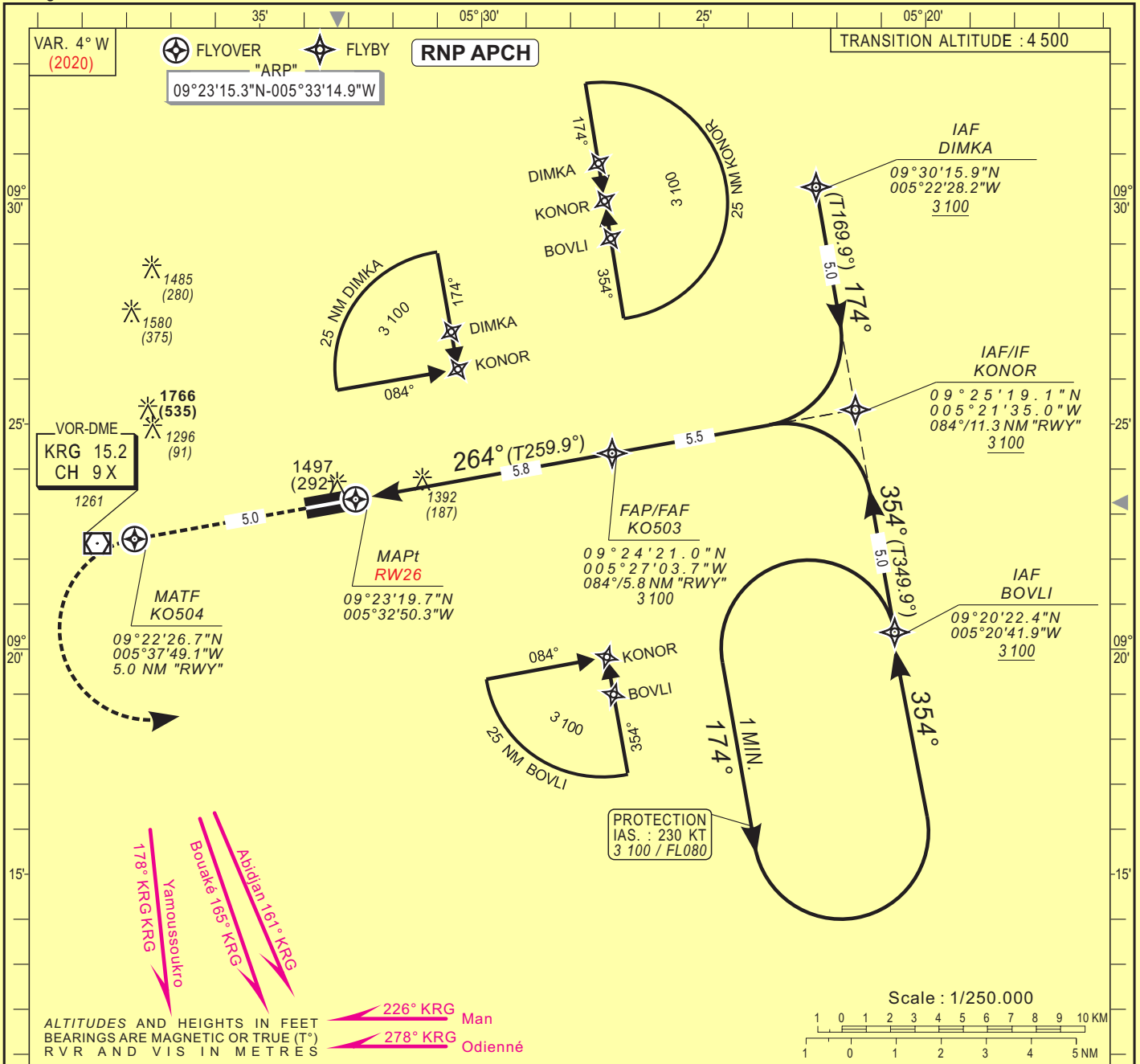
**INSTRUMENT APPROACH CHART**  
Categories A-B-C

ELEV. : 1 213  
THR : 1 205

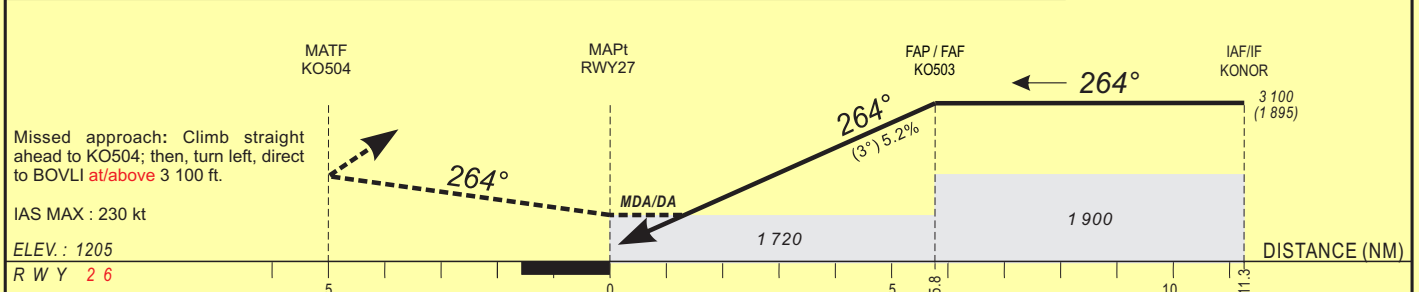
AFIS : 118.2

**KORHOGO (DIKO)**  
RNAV(GNSS) RWY 26

HEIGHTS RELATED TO THRESHOLD 27 ELEVATION



Distance to THR (NM)	FAP/FAF	6	5	4	3	2	1	Notes : - RDH : 15 m - Minimum temperature : 10°C
Altitude (ft)	3 100		2 850	2 530	2 210	1 890	1 580	



CAT	LNAV/VNAV (1)			LNAV			CIRCLING (2)			RVR for take-off: CATA - B - C : 400		
	OCA (OCH)	DA	DH	RVR	OCA (OCH)	MDA	MDH	RVR	OCA (OCH)		MDA	MDH
A	1615 (410)	1620 (410)		1500	1713 (508)	1720 (510)		1500	1792 (579)	1800 (580)		1500
B	1615 (410)	1620 (410)		1500	1713 (508)	1720 (510)		1500	1792 (579)	1800 (580)		1600
C	1615 (410)	1620 (410)		1800	1713 (508)	1720 (510)		2000	2160 (947)	2160 (950)		2400
D												

Notes : - (1) Not authorized with a remote QNH.  
- (2) Daytime only - South of the field - OCH and MDH AAL

**PROCEDURE TO BE USED ACCORDING TO DECISION N°185 / ANAC / NOA DATED ON 12 DECEMBER 2008**

Timing		FAP / THR 5.8 NM	
KT	MIN SEC	KT	MIN SEC
90	3 Min 52	140	2 Min 29
100	3 Min 29	150	2 Min 19
110	3 Min 10	160	2 Min 10
120	2 Min 54	170	
130	2 Min 41	180	

CORRECTIONS : Missed approach instruction

## TABULAR DESCRIPTION

RNAV <sub>(GNSS)</sub> RWY 08											
Serial Nr	Path Descriptor	Waypoint Ident.	Fly-Over	Course °M(°T)	Magnetic Variation	Distance (NM)	Turn Direction	Altitude (ft)	Speed Limit (ft)	VPA/TCH	Navigation Specification
010	IF	BOVLI	-	-	-	-	-	+3 100	-	-	RNP APCH
020	TF	KONOR	-	354(349.9)	-3.7	5.0	-	+3 100	-	-	RNP APCH
010	IF	DIMKA	-	-	-	-	-	+3 100	-	-	RNP APCH
020	TF	KONOR	-	174(169.9)	-3.7	5.0	-	+3 100	-	-	RNP APCH
010	IF	KONOR	-	-	-	-	-	+3 100	-	-	RNP APCH
020	TF	KO503	-	264(259.9)	-3.7	5.8	-	@3 100	-	-	RNP APCH
030	TF	RW26	Y	264(259.9)	-3.7	5.8	-	@1 255	-	-3.0/15	RNP APCH
010	IF	RW26	-	-	-	-	-	-	-	-	RNP APCH
020	CF	KO504	Y	264(259.9)	-3.7	5.0	L	-	-230	-	RNP APCH
030	DF	BOVLI	-	-	-	-	-	+3 100	-230	-	RNP APCH
010	IF	BOVLI	-	-	-	-	-	+3 100	-230	-	RNP APCH
020	HM	BOVLI	-	354(349.9)	-3.7	-	L	+3 100	-230	-	RNP APCH

## WAYPOINT LIST

Waypoint	Latitude	Longitude	Fix name	Notes
BOVLI	09°20'22.4"N	005°20'41.9"W	IAF Left hand base	
KONOR	09°25'19.1"N	005°21'35.0"W	IAF Central	
DIMKA	09°30'15.9"N	005°22'28.2"W	IAF Right hand base	
KO503	09°24'21.0"N	005°27'03.7"W	FAF/FAP	
RW26	09°23'19.7"N	005°32'50.3"W	MAPt	
KO504	09°22'26.7"N	005°37'49.1"W	MATF	

CORRECTIONS: Waypoint identification, Holding, Missed approach (Serial Nr 30) altitude