

Phone : +(242) 053779554
 +(242) 053779564

Fax :

AFTN : FCCCYNXX

e-mail :

bnibrazza@yahoo.fr

Web : <https://aim.asecna.aero>



**AIRAC AIP SUP
 N° 81/A/21FC**

DEC 30th, 2021

BUREAU NOTAM INTERNATIONAL DE L'AFRIQUE CENTRALE

B.P. 660 BRAZZAVILLE - CONGO

CAMEROUN – CENTRAFRIQUE – CONGO – GABON – GUINEE EQUATORIALE – SAO TOME - TCHAD

LIBREVILLE /Leon MBA (REPUBLIC OF GABON)

TRAJECTOIRES DE VOL CCO/CDO/CCO/CDO FLIGHT PATHS

**CE SUP AIP ANNULE ET REMPLACE LES SUP AIP N° 37/A/20FC
 DU 16 JUILLET 2020 N° 45/A/20FC DU 09 SEPTEMBRE 2020 ET LES
 NOTAM A1422/20, A1342/20 et A1712/20**

*THIS SUP AIP CANCELS AND REPLACES SUP AIP N ° 37/A/20FC OF
 JULY 16, 2020 N °45 /A/20FC OF SEPTEMBER 09, 2020 AND NOTAM
 A1422 / 20, A1342 / 20 and A1712 / 20*

Mise en vigueur/ <i>Effective date</i> :	JAN 27th , 2022
VALIDITE/ <i>Validity</i> :	PERM

Introduction

Mise jour des cartes aéronautiques de l'aéroport de Libreville, la procédure CCO/CDO de l'aéroport de Libreville est listée comme suit :

ANNEXES

- SID RNP1-RWY-16
- STAR RNP1-RWY 16
- TALEAU DE CODAGE SID
- TABLEAU DE CODAGE STAR

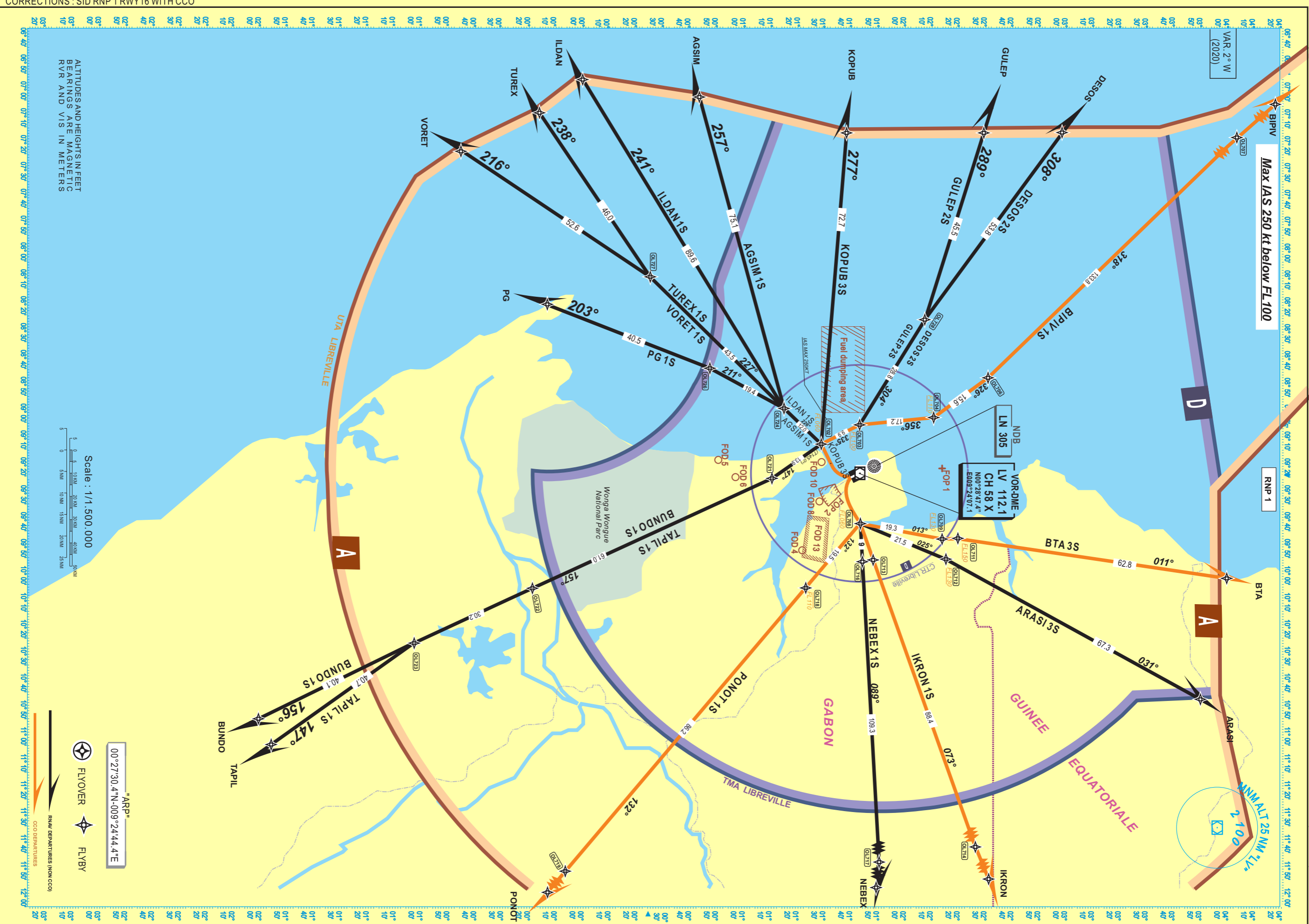
Introduction

Updating of aeronautical chart of Libreville airport, the CCO/CDO Procedures of Libreville airport are listed as follows :

APPENDICES

- SID RNP1-RWY-16
- STAR RNP1-RWY 16
- SID CODING TABLE
- STAR CODING TABLE

**CE SUP AIP AIRAC CONTIENT 01 PAGE ET 04 ANNEXES/THIS AIRAC AIP SUP INCLUDES 01 PAGE
 AND 04 APPENDICES**





STANDARD ARRIVAL CHART - INSTRUMENTS (STAR) - ICAO

LIBREVILLE / Léon M'BA (FOOL) RNAV (GNSS) -RWY16



CORRECTIONS : STAR RNP 1 RWY16 WITH CDO

VAR. 2° W (2020)

RNP 1

CDO ARRIVALS
RNAV ARRIVALS (NON CDO)

Legend
CDO ARRIVALS
RNAV ARRIVALS (NON CDO)

Scale : 1/1.500.000

ALTITUDES AND HEIGHTS IN FEET
BEARINGS ARE MAGNETIC OR TRUE (CT)

TABULAR DESCRIPTION

SID Indicator				SID Identifier			VAR 2020 - 2.0 W		
Serial Number	Path Descriptor	Waypoint	Fly-Over	Course °M(°T)	Distance (NM)	Turn Direction	Altitude (ft)	Speed (kt)	NAV Spec
BIPIV 1S									
010	CA			156(154.0)	-	R	+500	210	RNP1
020	*CF	OL702	N	-	-	R	-FL60	250	RNP1
030	TF	OL703	N	335(333.2)	09.9	R	+FL100		RNP1
040	TF	OL704	N	356(354.3)	17.2		+FL110		RNP1
050	TF	OL706	N	326(323.6)	15.6	L			RNP1
060	TF	OL707	N	318(315.8)	133.8				RNP1
070	TF	BIPIV	N	312(310.3)	54.5				RNP1
BTA 3S									
010	CA			156(154.0)	-	L	+500	210	RNP1
020	**CF	OL708	N	-	-	L	-FL060	250	RNP1
030	TF	OL709	N	013(010.6)	19.3		+FL120		RNP1
040	TF	OL711	N	000(357.6)	03.7		+FL150		RNP1
050	TF	BTA	N	011(008.6)	62.8				RNP1
IKRON 1S									
010	CA			156(154.0)	-	L	+500	210	RNP1
020	***CF	OL708	N	-	-		-FL060	250	RNP1
030	TF	OL713	N	073(070.5)	08.9				RNP1
040	TF	OL714	N	073(070.5)	88.4				RNP1
050	TF	IKRON	N	062(059.7)	28.4	L			RNP1
PONOT 1S									
010	CA			156(154.0)	-	L	+500	210	RNP1
020	****CF	OL708	N	-	-	R	-FL060	250	RNP1
030	TF	OL718	N	132(130.2)	19.5		+FL110		RNP1
040	TF	OL719	N	132(130.2)	86.2	R			RNP1
050	TF	PONOT	N	139(136.8)	35.6				RNP1
ARASI 3S									
010	CA			156(154.0)	-	L	+500	210	RNP1
020	****CF	OL708	N	-	-	L	-FL060	250	RNP1
030	TF	OL712	N	025(022.6)	21.5		+FL120		RNP1
040	TF	ARASI	N	031(029.0)	67.3				RNP1

(*)sequence N°20 for BIPIV 1S

Seq N°	PT	WPT ID	RMD VHF	THETA (°) magnetic	RHO (NM)
020	CF	OL702	LV	100.8	11.7

(**)sequence N°20 for BTA 3S

Seq N°	PT	WPT ID	RMD VHF	THETA (°) magnetic	RHO (NM)
020	CF	OL708	LV	100.8	11.7

(***)sequence N°20 for IKRON 1S

Seq N°	PT	WPT ID	RMD VHF	THETA (°) magnetic	RHO (NM)
020	CF	OL708	LV	100.8	11.7

(****)sequence N°20 for PONOT 1S

Seq N°	PT	WPT ID	RMD VHF	THETA (°) magnetic	RHO (NM)
020	CF	OL708	LV	100.8	11.7

SID Indicator				SID Identifier			VAR 2020 - 2.0 W		
Serial Number	Path Descriptor	Waypoint	Fly-Over	Course °M(°T)	Distance (NM)	Turn Direction	Altitude (ft)	Speed (kt)	NAV Spec
TAPIL 1S									
010	CA			156(154.0)	-	R	+500	210	RNP1
020	*****CF	OL702	N	-	-	L	-FL060	250	RNP1
030	TF	OL721	N	147(145.0)	13.9	R			RNP1
040	TF	OL722	N	157(155.2)	61.0				RNP1
050	TF	OL723	N	157(154.9)	30.2	L			
060	TF	TAPIL	N	147(144.5)	40.1				
BUNDO 1S									
010	CA			156(154.0)	-	R	+500	210	RNP1
020	*****CF	OL702	N	-	-	L	-FL060	250	RNP1
030	TF	OL721	N	147(145.0)	13.9	R			RNP1
040	TF	OL722	N	157(155.2)	61.0				RNP1
050	TF	OL723	N	157(154.9)	30.2	L			RNP1
060	TF	BUNDO	N	147(144.5)	40.1				RNP1
NEBEX 1S									
010	CA			156(154.0)	-	L	+500	210	RNP1
020	*****CF	OL708	N	-	-	L	-FL060	250	RNP1
030	TF	OL716	N	089(086.8)	09.0				RNP1
040	TF	OL717	N	089(086.8)	109.8				RNP1
050	TF	NEBEX	N	101(099.4)	28.4				RNP1
PG 1S									
010	CA			156(154.0)	-	R	+500	210	RNP1
020	*****CF	OL702	N	-	-	R	-FL060	250	RNP1
030	TF	OL724	N	226(224.0)	12.0	L			RNP1
040	TF	OL726	N	211(208.7)	19.4	L			RNP1
050	TF	PG	N	203(201.5)	40.5				RNP1

(****)sequence N°20 for ARASI 3S

Seq N°	PT	WPT ID	RMD VHF	THETA (°) magnetic	RHO (NM)
020	CF	OL708	LV	100.8	11.7

(*****)sequence N°20 for TAPIL 1S

Seq N°	PT	WPT ID	RMD VHF	THETA (°) magnetic	RHO (NM)
020	CF	OL702	LV	219.9	11.1

(*****)sequence N°20 for BUNDO 1S

Seq N°	PT	WPT ID	RMD VHF	THETA (°) magnetic	RHO (NM)
020	CF	OL702	LV	219.9	11.1

(*****)sequence N°20 for NEBEX 1S

Seq N°	PT	WPT ID	RMD VHF	THETA (°) magnetic	RHO (NM)
020	CF	OL708	LV	100.8	11.7

(*****)sequence N°20 for PG 1S

Seq N°	PT	WPT ID	RMD VHF	THETA (°) magnetic	RHO (NM)
020	CF	OL702	LV	219.9	11.1

LIST OF WAYPOINTS

Number	Waypoint ID	LATITUDE	LONGITUDE
1	BTA	01°54'09.0"N	009°48'32.0"E
2	BIPIV	03°10'37.0"N	006°47'06.0"E
3	IKRON	01°16'04.0"N	011°31'56.0"E
4	PONOT	01°05'35.0"S	011°20'52.0"E
5	TAPIL	01°47'57.0"S	010°27'09.0"E
6	NEBEX	00°30'55.6"N	012°01'28.8"E
7	BUNDO	01°50'54.0"S	010°21'12.0"E
8	ARASI	01°48'02.0"N	010°16'39.0"E
9	PG	00°43'43.6"S	008°44'50.9"E
10	OL702	00°19'58.1"N	009°17'17.4"E
11	OL703	00°28'52.5"N	009°12'48.8"E
12	OL704	00°38'30.5"N	009°09'16.4"E
13	OL706	00°58'43.1"N	009°01'52.5"E
14	OL707	02°35'10.7"N	007°28'42.4"E
15	OL708	00°29'01.2"S	009°35'48.2"E
16	OL709	00°40'27.8"N	009°37'30.9"E
17	OL711	00°51'43.5"N	009°39'11.9"E
18	OL712	00°41'21.3"N	009°42'11.5"E
19	OL713	00°32'00.6"N	009°44'11.8"E
20	OL714	01°01'38.8"N	011°07'26.5"E
21	OL716	00°29'30.8"N	009°44'36.9"E
22	OL717	00°35'34.3"N	011°33'31.3"E
23	OL718	00°16'21.4"N	009°50'42.6"E
24	OL719	00°39'29.2"S	010°56'32.8"E
25	OL721	00°08'32.0"N	009°25'14.9"E
26	OL722	00°47'08.8"S	009°50'48.4"E
27	OL723	01°14'39.9"S	010°03'35.1"E
28	OL724	01°11'19.1"N	009°08'59.2"E
29	OL726	00°05'49.4"S	008°59'40.1"E

CORRECTIONS : FIRST VERSION

TABULAR DESCRIPTION

SID Indicator				SID Identifier			VAR 2020 - 2.0 W		
Serial Number	Path Descriptor	Waypoint	Fly-Over	Course °M(°T)	Distance (NM)	Turn Direction	Altitude (ft)	Speed (kt)	NAV Spec
VORET 1S									
010	CA			156(154.0)	-	R	+500	210	RNP1
020	*	CF	OL702	N	-	R	-FL060	250	RNP1
030	TF	OL724	N	226(224.0)	12.0				RNP1
040	TF	OL727	N	227(224.7)	43.5	L			RNP1
050	TF	VORET	N	216(213.6)	52.6				RNP1
TUREX 1S									
010	CA			156(154.0)	-	R	+500	210	RNP1
020	**	CF	OL702	N	-	R	-FL060	250	RNP1
030	TF	OL724	N	226(224.0)	12.0				RNP1
040	TF	OL727	N	227(224.7)	43.5	R			RNP1
050	TF	TUREX	N	238(236.1)	46.0				RNP1
ILDAN 1S									
010	CA			156(154.0)	-	R	+500	210	RNP1
020	***	CF	OL702	N	-	R	-FL060	250	RNP1
030	TF	OL724	N	226(224.0)	12.0	R			RNP1
040	TF	ILDAN	N	241(238.7)	89.0				RNP1
AGSIM 1S									
010	CA			156(154.0)	-	R	+500	210	RNP1
020	****	CF	OL702	N	-	R	-FL060	250	RNP1
030	TF	OL724	N	226(224.0)	12.0				RNP1
040	TF	AGSIM	N	257(254.8)	75.1				RNP1

(*)sequence N°20 for VORET 1S

Seq N°	PT	WPT ID	RMD VHF	THETA (°) magnetic	RHO (NM)
020	CF	OL702	LV	219.9	11.1

(**)sequence N°20 for TUREX 1S

Seq N°	PT	WPT ID	RMD VHF	THETA (°) magnetic	RHO (NM)
020	CF	OL702	LV	219.9	11.1

(***)sequence N°20 for ILDAN 1S

Seq N°	PT	WPT ID	RMD VHF	THETA (°) magnetic	RHO (NM)
020	CF	OL702	LV	219.9	11.1

(****)sequence N°20 for AGSIM 1S

Seq N°	PT	WPT ID	RMD VHF	THETA (°) magnetic	RHO (NM)
020	CF	OL702	LV	219.9	11.1

(*****)sequence N°20 for KOPUB 3S

Seq N°	PT	WPT ID	RMD VHF	THETA (°) magnetic	RHO (NM)
020	CF	OL702	LV	219.9	11.1

(*****)sequence N°20 for GULEP 2S

Seq N°	PT	WPT ID	RMD VHF	THETA (°) magnetic	RHO (NM)
020	CF	OL702	LV	219.9	11.1

(*****)sequence N°20 for DESOS 1S

Seq N°	PT	WPT ID	RMD VHF	THETA (°) magnetic	RHO (NM)
020	CF	OL702	LV	219.9	11.1

SID Indicator				SID Identifier			VAR 2020 - 2.0 W		
Serial Number	Path Descriptor	Waypoint	Fly-Over	Course °M(°T)	Distance (NM)	Turn Direction	Altitude (ft)	Speed (kt)	NAV Spec
KOPUB 3S									
010	CA			156(154.0)	-	R	+500	210	RNP1
020	*****	CF	OL702	N	-	R	-FL060	250	RNP1
030	TF	KOPUB	N	277(274.6)	72.7				RNP1
GULEP 2S									
010	CA			156(154.0)	-	R	+500	210	RNP1
020	*****	CF	OL702	N	-	R	-FL060	250	RNP1
030	TF	OL703	N	335(333.2)	09.9	L	+FL100		RNP1
040	TF	OL728	N	304(301.6)	28.8	L			RNP1
050	TF	GULEP	N	289(287.4)	45.5				RNP1
DESOS 2S									
010	CA			156(154.0)	-	R	+500	210	RNP1
020	*****	CF	OL702	N	-	R	-FL060	250	RNP1
030	TF	OL703	N	335(333.2)	09.9	L	+FL100		RNP1
040	TF	OL728	N	304(301.6)	28.8	L			RNP1
050	TF	DESOS	N	308(306.2)	53.8				RNP1

LIST OF WAYPOINTS

Number	Waypoint ID	LATITUDE	LONGITUDE
1	VORET	01°03'48.0"S	008°09'17.0"E
2	TUREX	00°45'33.2"S	008°00'19.8"E
3	ILDAN	00°35'30.5"S	007°52'36.4"E
4	AGSIM	00°08'24.0"S	007°56'40.0"E
5	KOPUB	00°25'49.0"N	008°05'00.0"E
6	NEBEX	00°30'55.6"N	012°01'28.8"E
7	GULEP	00°57'44.0"N	008°05'00.0"E
8	DESOS	01°15'58.0"N	008°05'00.0"E
9	OL702	00°19'58.1"N	009°17'17.4"E
10	OL703	00°28'52.5"N	009°12'48.8"E
11	OL724	01°11'19.1"N	009°08'59.2"E
12	OL727	00°19'45.9"S	008°38'24.1"E
13	OL728	00°44'02.2"N	008°48'19.5"E

CORRECTIONS : FIRST VERSION

TABULAR DESCRIPTION

STAR Indicator				STAR Identifier			VAR 2020 - 2.0 W		
Serial Number	Path Descriptor	Waypoint	Fly-Over	Course °M(°T)	Distance (NM)	Turn Direction	Altitude (ft)	Speed (kt)	NAV Spec
BIPIV 1B									
010	IF	BIPIV	N						RNP1
020	TF	OL426	N	143(141.1)	54.5	L			RNP1
030	TF	OL424	N	138(135.8)	50.5		+FL270		RNP1
040	TF	OL423	N	137(135.2)	85.9		BFL100-FL040		RNP1
050	TF	OL437	N	120(117.9)	20.6				RNP1
060	TF	BINAS	N	120(117.9)	04.5		+2000	230	RNP1
BTA 1B									
010	IF	BTA	N						RNP1
020	TF	OL411	N	206(260.1)	71.5	L			RNP1
030	TF	BINAS	N	182(180.2)	09.8			230	RNP1
IKRON 1L									
010	IF	IKRON	N						RNP1
020	TF	OL418	N	262(260.1)	28.4	L			RNP1
030	TF	OL417	N	255(253.4)	38.1		+FL150		RNP1
040	TF	OL416	N	255(253.3)	35.1		BFL110-FL040		RNP1
050	TF	LILAT	N	255(253.3)	31.5		+2100 FT	230	RNP1
PONOT 1L									
010	IF	PONOT	N						RNP1
020	TF	OL429	N	311(308.7)	35.6				RNP1
030	TF	OL428	N	303(300.7)	41.3	R	+FL150		RNP1
040	TF	OL427	N	311(308.7)	32.4				RNP1
050	TF	OL441	N	321(318.9)	28.6	R	+FL120		RNP1
060	TF	OL438	N	335(332.9)	09.8	R	+FL070		RNP1
070	TF	LILAT	N	335(332.9)	12.9		+2100 FT	230	RNP1
ARASI 1L									
010	IF	ARASI	N						RNP1
020	TF	OL414	N	220(218.8)	43.6		-FL040		RNP1
030	TF	OL413	N	315(313.3)	12.5		-FL110		RNP1
040	TF	LILAT	N	315(313.3)	29.1		+2100 FT	230	RNP1

STAR Indicator				STAR Identifier			VAR 2020 - 2.0 W		
Serial Number	Path Descriptor	Waypoint	Fly-Over	Course °M(°T)	Distance (NM)	Turn Direction	Altitude (ft)	Speed (kt)	NAV Spec
TAPIL 1L									
010	IF	TAPIL	N						RNP1
020	TF	OL432	N	341(338.7)	39.8				RNP1
030	TF	OL431	N	338(336.1)	69.0	L			RNP1
040	TF	OL441	N	341(338.9)	29.7	R	+FL120		RNP1
050	TF	OL438	N	335(332.9)	09.8		+FL070		RNP1
060	TF	LILAT	N	335(332.9)	12.9		+2100 FT	230	RNP1
BUNDO 1L									
010	IF	BUNDO	N						RNP1
020	TF	OL432	N	350(348.7)	40.6	L			RNP1
030	TF	OL431	N	338(336.1)	69.0	R			RNP1
040	TF	OL441	N	341(338.9)	29.7	L	+FL120		RNP1
050	TF	OL438	N	335(332.9)	09.8		+FL070		RNP1
060	TF	LILAT	N	335(332.9)	12.9		+2100 FT	230	RNP1
NEBEX 1L									
010	IF	NEBEX	N						RNP1
020	TF	OL422	N	270(267.7)	28.5				RNP1
030	TF	OL421	N	270(267.7)	57.8				RNP1
040	TF	OL419	N	270(267.7)	31.7				RNP1
050	TF	OL441	N	270(267.7)	30.2	R	+FL120		RNP1
060	TF	OL438	N	335(332.9)	09.8		+FL070		RNP1
070	TF	LILAT	N	335(332.9)	12.9		+2100 FT	230	RNP1
PG 1R									
010	IF	PG	N						RNP1
020	TF	OL408	N	038(035.7)	40.3	L			RNP1
030	TF	OL407	N	031(028.7)	2295				RNP1
040	TF	OL439	N	031(028.7)	09.5	L			RNP1
050	TF	OL442	N	336(334.0)	09.7		+FL070		RNP1
060	TF	RATOS	N	336(334.0)	11.2		+2000 FT	230	RNP1

LIST OF WAYPOINTS

Number	Waypoint ID	LATITUDE	LONGITUDE
1	BTA	01°54'09.0"N	009°48'32.0"E
2	BIPIV	03°10'37.0"N	006°47'06.0"E
3	IKRON	01°16'04.0"N	011°31'56.0"E
4	PONOT	01°05'35.0"S	011°20'52.0"E
5	TAPIL	01°47'57.0"S	010°27'09.0"E
6	NEBEX	00°30'55.6"N	012°01'28.8"E
7	BUNDO	01°50'54.0"S	010°21'12.0"E
8	BINAS	00°38'43.8"N	009°19'18.8"E
9	ARASI	01°48'02.0"N	010°16'39.0"E
10	RATOS	00°36'31.8"N	009°14'49.5"E
11	PG	00°43'43.6"S	008°44'50.9"E
12	LILAT	00°40'55.8"N	009°23'48.0"E
13	OL424	01°51'45.7"N	007°56'46.8"E
14	OL423	00°50'30.9"N	008°57'11.0"E
15	OL437	00°40'49.2"N	009°15'23.1"E
16	OL411	00°48'36.4"N	009°19'18.3"E
17	OL418	01°11'05.1"N	011°04'00.9"E
18	OL417	01°00'06.8"N	010°27'33.7"E
19	OL426	02°28'09.2"N	007°21'33.8"E
20	OL416	00°50'00.8"N	009°53'58.1"E
21	OL429	00°47'18.8"S	010°50'17.2"E
22	OL428	00°21'20.8"S	010°18'04.6"E
23	OL427	00°01'00.1"S	009°52'53.1"E
24	OL441	00°20'37.5"N	009°34'08.1"E
25	OL438	00°29'22.1"N	009°29'40.6"E
26	OL414	01°13'39.3"N	009°49'36.8"E
27	OL413	01°03'50.0"N	009°41'50.1"E
28	OL432	01°10'38.6"S	010°12'41.3"E
29	OL431	00°07'15.4"S	009°44'49.5"E
30	OL422	00°25'31.8"N	011°33'33.9"E
31	OL421	00°23'10.0"N	010°35'54.8"E
32	OL419	00°21'52.2"N	010°04'16.3"E
33	OL442	00°26'25.9"N	009°19'43.1"E
34	OL408	00°10'52.5"S	009°08'19.4"E
35	OL407	00°09'20.2"N	009°19'19.8"E
36	OL439	00°17'39.9"N	009°23'58.5"E

CORRECTIONS : FIRST VERSION

TABULAR DESCRIPTION

STAR Indicator				STAR Identifier			VAR 2020 - 2.0 W		
Serial Number	Path Descriptor	Waypoint	Fly-Over	Course °M(°T)	Distance (NM)	Turn Direction	Altitude (ft)	Speed (kt)	NAV Spec
VORET 1R									
010	IF	VORET	N						RNP1
020	TF	OL407	N	046(044.0)	101.1	L			RNP1
030	TF	OL439	N	031(028.7)	09.5	L			RNP1
040	TF	OL442	N	336(334.0)	09.7		+FL070		RNP1
050	TF	RATOS	N	336(334.0)	11.2		+2000 FT	230	RNP1
TUREX 1R									
010	IF	TUREX	N						RNP1
020	TF	OL434	N	041(039.1)	86.3	R			RNP1
030	TF	OL433	N	056(054.1)	12.0		BFL040-FL090		RNP1
040	TF	RATOS	N	056(054.1)	13.0		+2000 FT	230	RNP1
ILDAN 1R									
010	IF	ILDAN	N						RNP1
020	TF	OL434	N	049(047.5)	84.3	R			RNP1
030	TF	OL433	N	056(054.1)	12.0		BFL040-FL090		RNP1
040	TF	RATOS	N	056(054.1)	13.0		+2000 FT	230	RNP1
AGSIM 1R									
010	IF	AGSIM	N						RNP1
020	TF	OL434	N	065(062.7)	65.4	L			RNP1
030	TF	OL433	N	056(054.1)	12.0		BFL040-FL090		RNP1
040	TF	RATOS	N	056(054.1)	13.0		+2000 FT	230	RNP1

STAR Indicator				STAR Identifier			VAR 2020 - 2.0 W		
Serial Number	Path Descriptor	Waypoint	Fly-Over	Course °M(°T)	Distance (NM)	Turn Direction	Altitude (ft)	Speed (kt)	NAV Spec
KOPUB 1R									
010	IF	KOPUB	N						RNP1
020	TF	OL436	N	081(078.6)	45.9	R			RNP1
030	TF	OL409	N	088(086.4)	16.1		BFL040-FL090		RNP1
040	TF	RATOS	N	088(086.4)	08.9		+2000 FT	230	RNP1
GULEP 1R									
010	IF	GULEP	N						RNP1
020	TF	OL436	N	119(116.7)	50.4	L			RNP1
030	TF	OL409	N	088(086.4)	16.1		BFL040-FL090		RNP1
040	TF	RATOS	N	088(086.4)	08.9		+2000 FT	230	RNP1
DESOS 1B									
010	IF	DESOS	N						RNP1
020	TF	OL423	N	118(115.7)	58.1	R	BFL040-FL090		RNP1
030	TF	OL437	N	120(117.9)	20.6				RNP1
040	TF	BINAS	N	120(117.9)	04.5		+2000 FT	230	RNP1

LIST OF WAYPOINTS

Number	Waypoint ID	LATITUDE	LONGITUDE
1	VORET	01°03'48.0"S	008°09'17.0"E
2	TUREX	00°45'33.2"S	008°00'19.8"E
3	ILDAN	00°35'30.5"S	007°52'36.4"E
4	AGSIM	00°08'24.0"S	007°56'40.0"E
5	KOPUB	00°25'49.0"N	008°05'00.0"E
6	NEBEX	00°30'55.6"N	012°01'28.8"E
7	GULEP	00°57'44.0"N	008°05'00.0"E
8	BINAS	00°38'43.8"N	009°19'18.8"E
9	DESOS	01°15'58.0"N	008°05'00.0"E
10	RATOS	00°36'31.8"N	009°14'49.5"E
11	OL434	00°21'44.9"N	008°54'38.5"E
12	OL433	00°28'50.6"N	009°04'21.4"E
13	OL423	00°50'30.9"N	008°57'11.0"E
14	OL437	00°40'49.2"N	009°15'23.1"E
15	OL409	00°35'57.2"N	009°05'55.7"E
16	OL436	00°34'56.3"N	008°49'55.8"E
17	OL407	00°09'20.2"N	009°19'19.8"E
18	OL439	00°17'39.9"N	009°23'58.5"E
19	OL442	00°26'25.9"N	009°19'43.1"E
20	OL501	00°33'42.4"N	009°21'44.5"E

CORRECTIONS : FIRST VERSION