

Tel : +(261) 20.22.581.13  
 +(261) 20.22.581.14  
 +(261) 33.23.370.01

Fax : NIL

AFTN : FMMYNYX

E-mail : bnitan@asecna.org

AntananarivoNOF@gmail.com

Web : <https://aim.asecna.aero>



**BUREAU NOTAM INTERNATIONAL  
 D'ANTANANARIVO**

**B.P. 46 Ivato Aéroport Antananarivo -  
 MADAGASCAR**

**AIRAC AIP SUP  
 NR 53/A/22FM  
 03 NOV 2022**

**LA REUNION\* - MADAGASCAR - MAYOTTE\* - UNION DES COMORES**

\* The AIC, AMDT, AIP and AIP SUP concerning these islands are published on <https://sia.aviation-civile.gouv.fr>

## FMST

### Nouvelles procédures d'approche aux instruments

#### *New instrument approach procedures*

<i>Effective date :</i>	<b>29 DEC 2022</b>
<i>Validity :</i>	<b>PERM</b>

Les cartes qui sont relatives aux nouvelles procédures d'approche aux instruments « RNP - RWY 04 » et « RNP - RWY 22 » concernant l'aéroport de TOLIARY sont publiées dans le présent supplément d'AIP avant leur insertion dans l'AIP.

The charts that are relative to the new instruments approach procedure « RNP - RWY 04 » and « RNP - RWY 22 » concerning TOLIARY airport are published in this AIP supplement before inserting them in the AIP.

#### AMEND ASECNA AIP :

- 09AD2-FMST-IAC-RNP04
- 09AD2-FMST-IAC-RNP04-DATA
- 09AD2-FMST-IAC-RNP22
- 09AD2-FMST-IAC-RNP22-DATA

THIS AIP SUP HAS 01 PAGE AND 2 APPENDICES

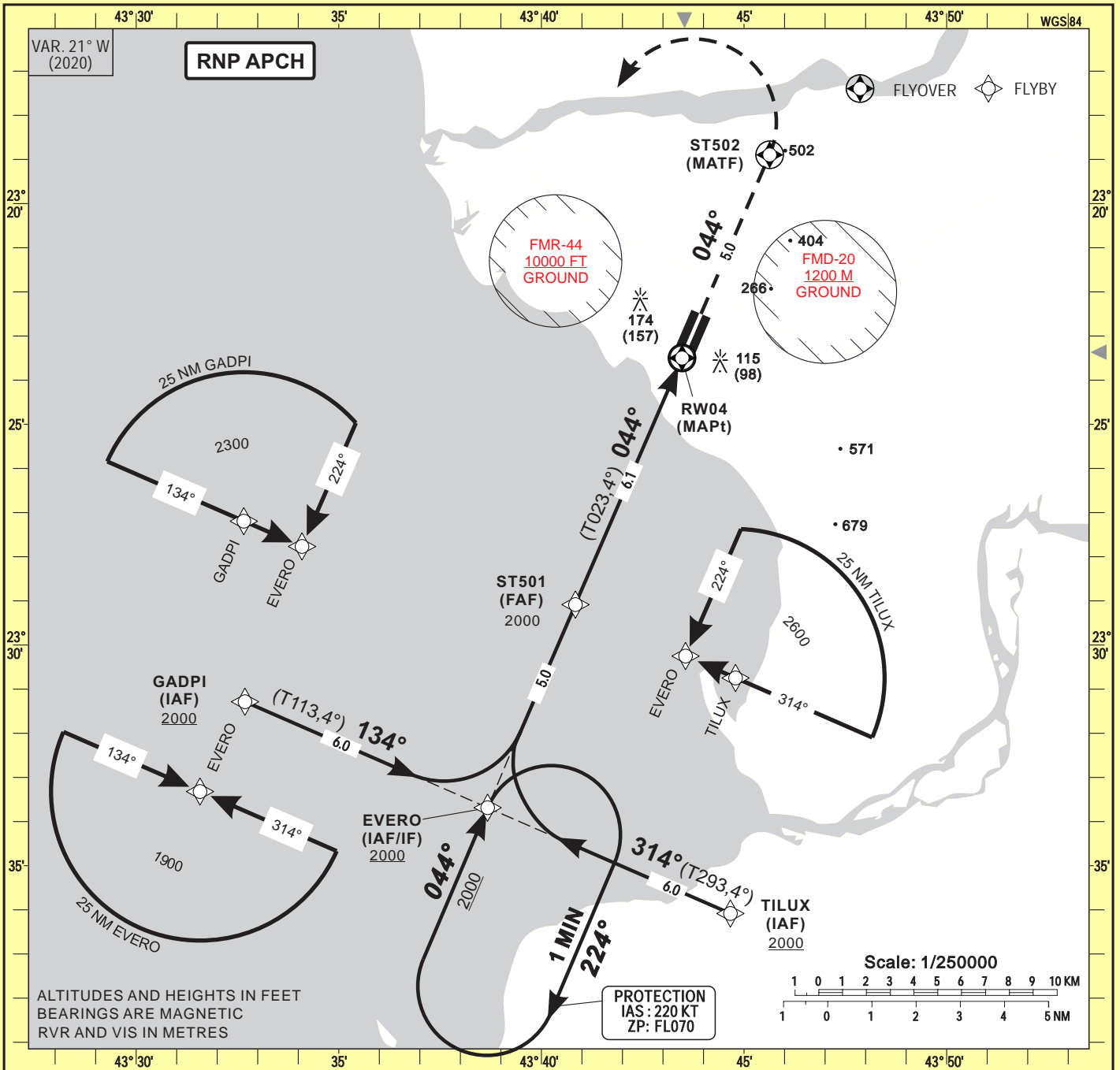
**INSTRUMENT APPROACH CHART-ICAO**

**AERODROME ELEV 37 FT**

AFIS 118.6

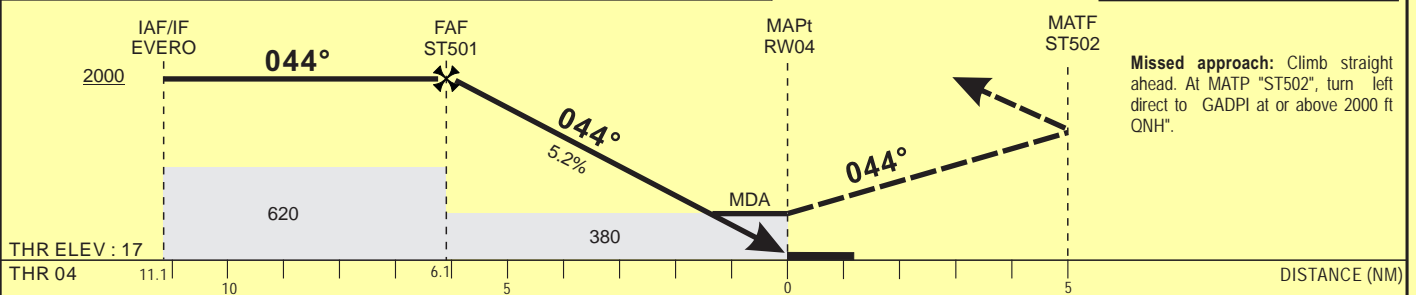
**TOLIARY (FMST)**  
**RNP - RWY 04**  
 (ACFT CAT A, B, C, D)

HEIGHTS RELATED TO THR RWY04 - ELEV 17 FT



Distance to THR 04 (NM)		FAF	5	4	3	2
Altitude (ft)		2000	1660	1340	1030	710

**TRANSITION ALTITUDE : 3500**



CAT	LNAV			Circling(*)				RVR for take-off CATA - B - C - D : 400
	OCA (OCH)	MDA (MDH)	RVR	OCA (OCH)	MDA MDH	VIS		
A	373 (356)	380 (360)	1500	627 (590)	630 (590)	1500		
B			1500	765 (728)	770 (730)	1600		
C			1800	1031 (994)	1040 (1000)	2400		
D			2000	1139 (1102)	1140 (1100)	3600		

Timing		FAF / THR 6.1 NM	
KT	MIN . SEC	KT	MIN . SEC
90	4 Min 04	140	2 Min 37
100	3 Min 40	150	2 Min 26
110	3 Min 20	160	2 Min 17
120	3 Min 03	170	2 Min 09
130	2 Min 49	180	2 Min 02

Notes : (\*) Daytime only - OCH and MDH AAL

CORRECTIONS : First edition

**TABULAR DESCRIPTION**

**RNP RWY 04**

Serial Number	Path Descriptor	Waypoint Identifier	Fly- Over	Course °M(°T)	Magnetic Variation	Distance (NM)	Turn Direction	Altitude (ft)	Speed limit (Kt)	VPA / TCH	Navigation Specification
10	IF	GADPI	-					+2000	230	-	RNP APCH
20	TF	EVERO	-	134 (113.4)		6.0		+2000	230	-	RNP APCH
10	IF	TILUX	-					+2000	230	-	RNP APCH
20	TF	EVERO	-	314 (293.4)		6.0		+2000	230	-	RNP APCH
10	IF	EVERO	-					+2000	230	-	RNP APCH
20	TF	ST501	-	044 (023.4)		5.0		@2000	230	-	RNP APCH
30	TF	RW04	Y	044 (023.4)	+21.0	6.1		@67	-	-3/15	RNP APCH
40	TF	ST502	Y			5.0	L		-	-	RNP APCH
50	DF	GADPI	-					+2000	230	-	RNP APCH
10	IF	EVERO	-						-		RNP APCH
20	HM	EVERO	Y	044 (023.4)			R	+2000	230	-	RNP APCH

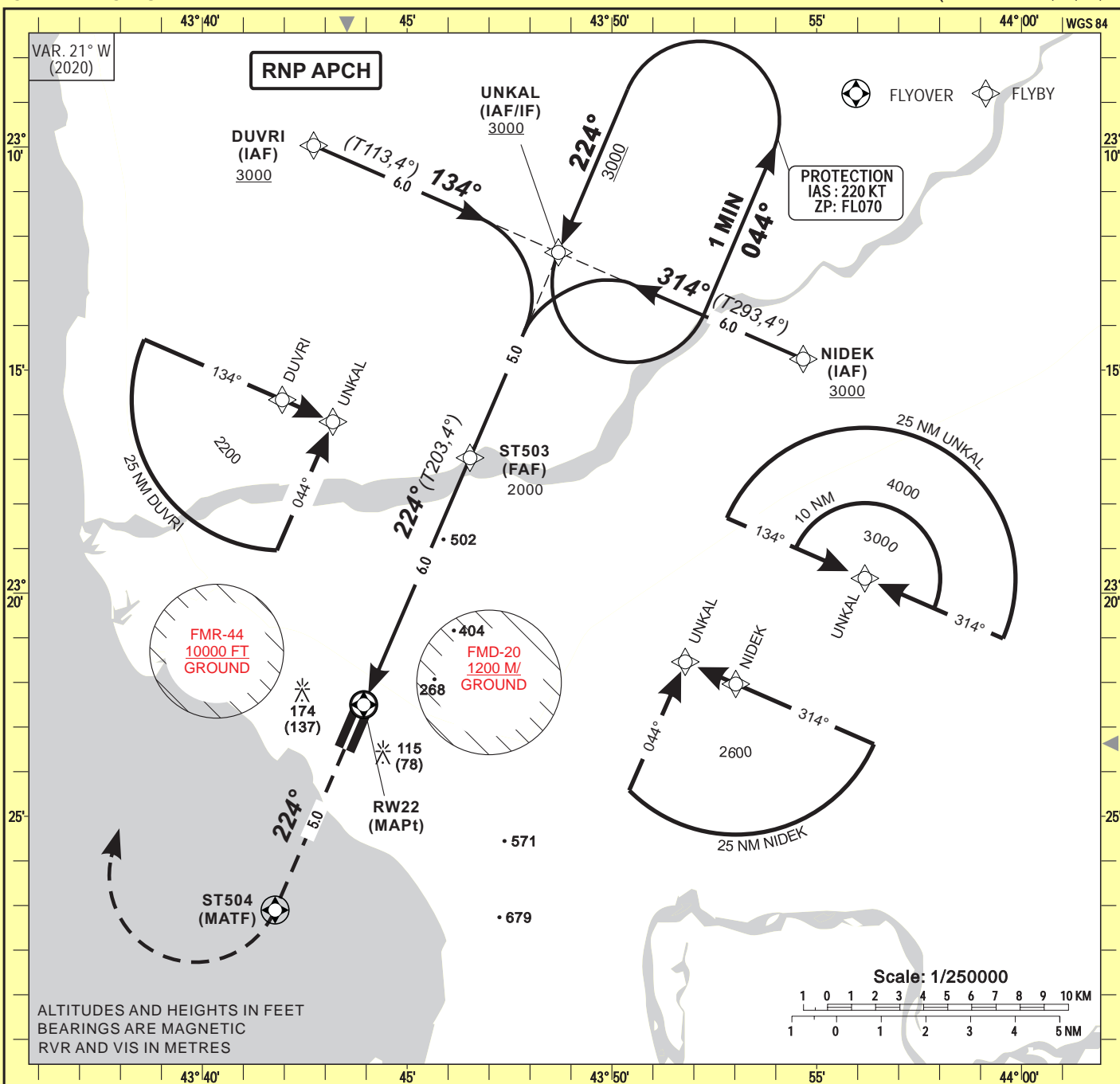
RNP RWY 04		
Waypoint Identifier	Coordinates	
GADPI	23°31'17.610"S	043°32'40.912"E
EVERO	23°33'41.174"S	043°38'40.406"E
TILUX	23°36'04.719"S	043°44'40.284"E
ST501	23°29'05.090"S	043°40'50.445"E
RW04	23°23'29.772"S	043°43'28.161"E
ST502	23°18'53.616"S	043°45'37.868"E

**INSTRUMENT  
APPROACH  
CHART-ICAO**

**AERODROME ELEV 37 FT**  
HEIGHTS RELATED TO THR RWY22 - ELEV 37 FT

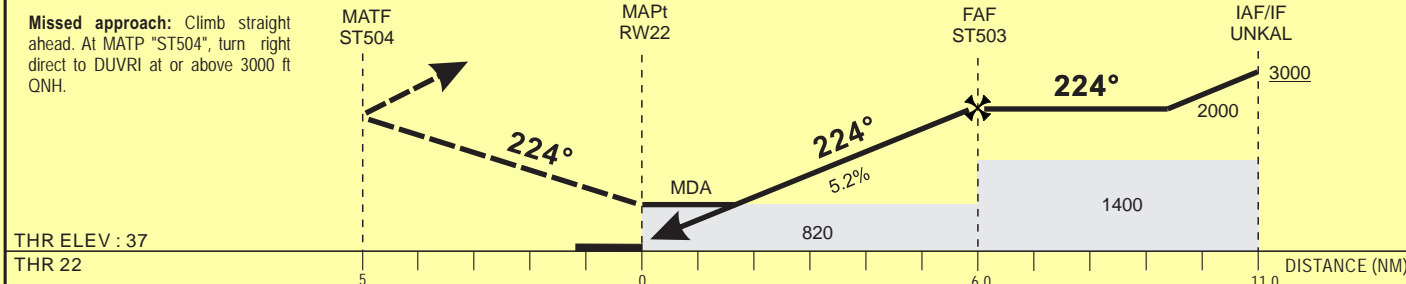
AFIS 118.6

**TOLIARY (FMST)**  
**RNP - RWY 22**  
(ACFT CAT A, B, C, D)



Distance to THR 22 (NM)	3	4	5	FAF
Altitude (ft)	1050	1360	1680	2000

TRANSITION ALTITUDE : 3500



THR ELEV : 37  
THR 22

CAT	LNAV			Circling(*)				RVR for take-off CATA - B - C - D : 400
	OCA (OCH)	MDA (MDH)	RVR	OCA (OCH)	MDA	MDH	VIS	
A	814 (777)	820 (780)	1500	627 (590)	630 (590)	770 (730)	1500	<b>Timing</b> FAF / THR 6.0 NM KT MIN . SEC KT MIN . SEC 90 4 Min 00 140 2 Min 34 100 3 Min 36 150 2 Min 24 110 3 Min 16 160 2 Min 15 120 3 Min 00 170 2 Min 07 130 2 Min 46 180 2 Min 00
B			1500	765 (728)			1600	
C			1800	1031 (994)			2400	
D			2000	1139 (1102)			3600	

Notes : (\*) Daytime only - OCH and MDH AAL  
- RDH: 50 ft

CORRECTIONS : First edition

**TABULAR DESCRIPTION**

**RNP RWY 22**

Serial Number	Path Descriptor	Waypoint Identifier	Fly- Over	Course °M(°T)	Magnetic Variation	Distance (NM)	Turn Direction	Altitude (ft)	Speed limit (Kt)	VPA / TCH	Navigation Specification
10	IF	DUVRI	-					+3000	230	-	RNP APCH
20	TF	UNKAL	-	134 (113.4)		6.0		+3000	230	-	RNP APCH
10	IF	NIDEK	-					+3000	230	-	RNP APCH
20	TF	UNKAL	-	314 (293.4)		6.0		+3000	230	-	RNP APCH
10	IF	UNKAL	-					+3000	230	-	RNP APCH
20	TF	ST503	-	224 (203.4)		5.0		@2000	230	-	RNP APCH
30	TF	RW22	Y	224 (203.4)	+21.0	6.0		@87	-	-3/15	RNP APCH
40	TF	ST504	Y			5.0	R		-	-	RNP APCH
50	DF	DUVRI	-					+3000	230	-	RNP APCH
10	IF	UNKAL	-						-		RNP APCH
20	HM	UNKAL	Y	224 (203.4)			L	+3000	230	-	RNP APCH

RNP RWY 22		
Waypoint Identifier	Coordinates	
DUVRI	23°09'58.184"S	043°42'43.102"E
UNKAL	23°12'21.753"S	043°48'41.640"E
NIDEK	23°14'45.381"S	043°54'40.277"E
ST503	23°16'57.955"S	043°46'32.144"E
RW22	23°22'29.898"S	043°43'56.297"E
ST504	23°27'06.029"S	043°41'46.473"E