

Tel : +(261) 20.22.581.13
+(261) 20.22.581.14
+(261) 33.23.370.01

Fax : NIL

AFTN : FMMYNYX

E-mail : bnitan@asecna.org
AntananarivoNOF@gmail.com

Web : <https://aim.asecna.aero>



**BUREAU NOTAM INTERNATIONAL
D'ANTANANARIVO**

**B.P. 46 Ivato Aéroport Antananarivo -
MADAGASCAR**

**AIRAC AIP SUP
NR 51/A/22FM
03 NOV 2022**

LA REUNION* - MADAGASCAR - MAYOTTE* - UNION DES COMORES

* The AIC, AMDT, AIP and AIP SUP concerning these islands are published on <https://sia.aviation-civile.gouv.fr>

FMNA

Nouvelle procédure d'approche aux instruments

New instrument approach procedure

<i>Effective date :</i>	29 DEC 2022
<i>Validity :</i>	PERM

La carte qui est relative à la nouvelle procédure d'approche aux instruments « RNP - RWY 13 » concernant l'aéroport d'ANTSIRANANA /ARRACHART est publiée dans le présent supplément d'AIP avant leur insertion dans l'AIP.

The chart that is relative to the new instrument approach procedure « RNP - RWY 13 » concerning ANTSIRANANA/ARRACHART airport is published in this AIP supplement before inserting them in the AIP.

AMEND ASECNA AIP :

- 09AD2-FMNA-IAC-RNP13
- 09AD2-FMNA-IAC-RNP13-DATA

THIS AIP SUP HAS 01 PAGE AND 1 APPENDIX

**INSTRUMENT
APPROACH
CHART-ICAO**

AERODROME ELEV 373 FT

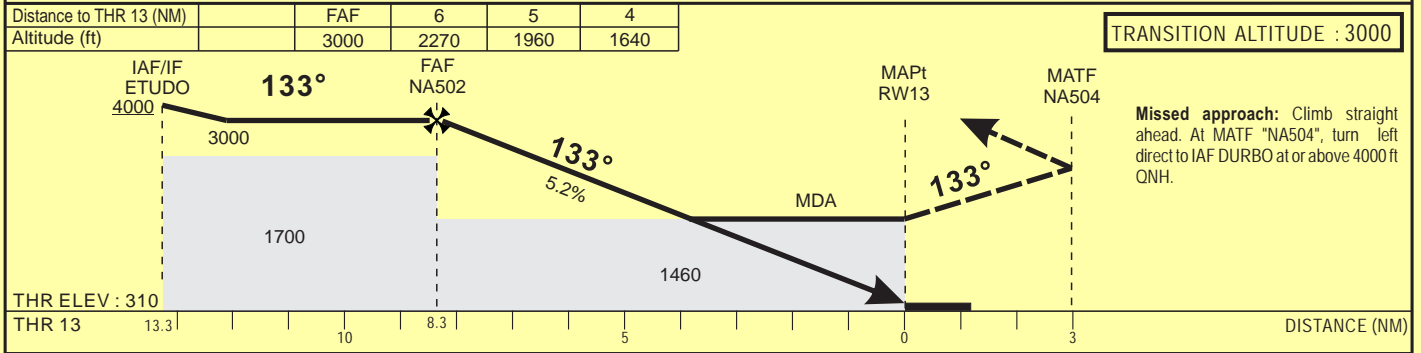
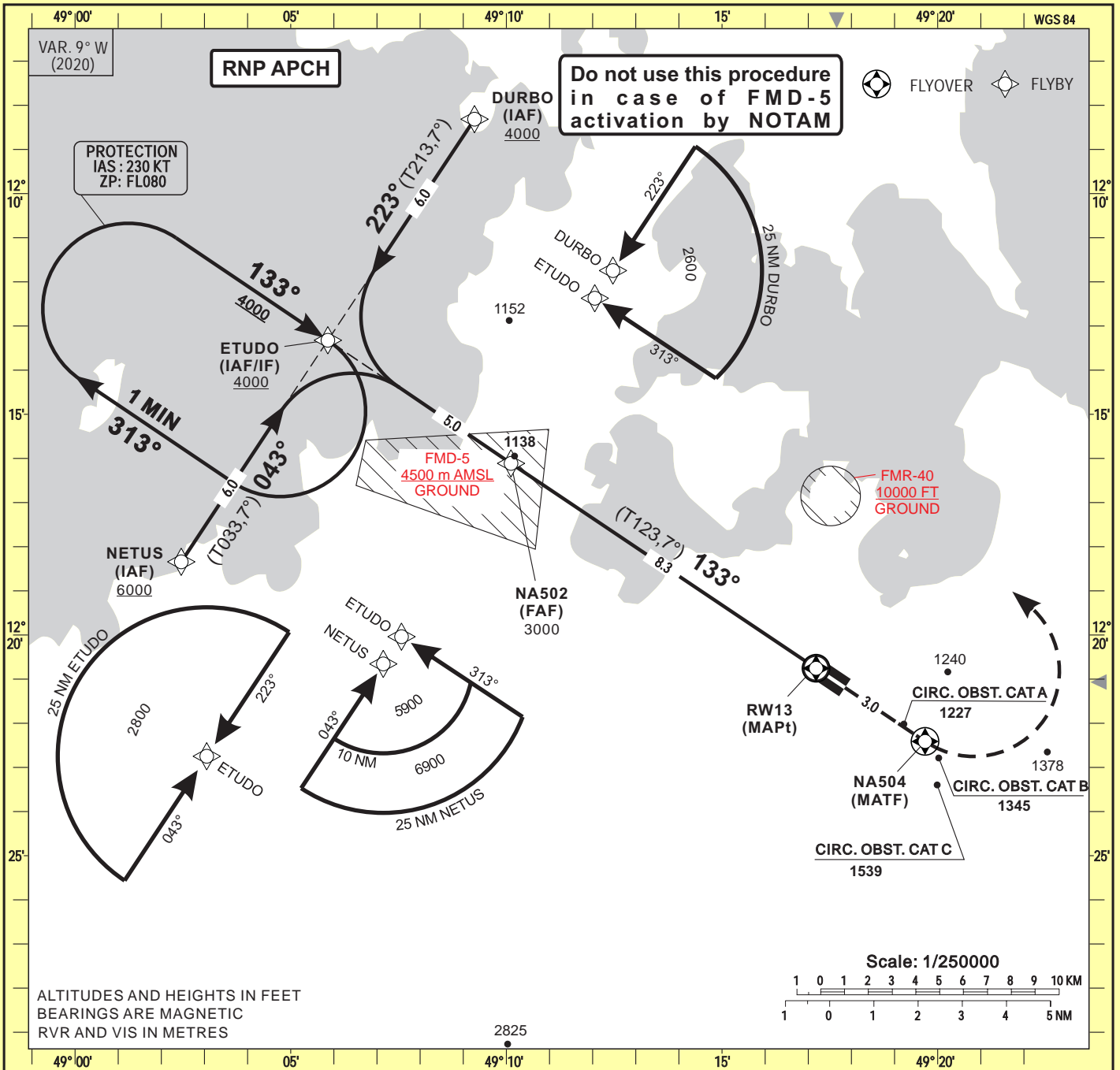
AFIS 118.9

ANTSIRANANA - Arrachart (FMNA)

RNP - RWY 13

HEIGHTS RELATED TO THR RWY13 - ELEV 310 FT

(ACFT CAT A, B, C)



CAT	LNAV			Circling(*)				RVR for take-off CATA - B - C : 400
	OCA (OCH)	MDA (MDH)	RVR	OCA (OCH)	MDA	MDH	VIS	
A	1451 (1141)	1460 (1150)	1500	1588 (1215)	1590 (1220)	1500		
B			1500	1706 (1333)	1710 (1340)	1600		
C			1800	1998 (1625)	2000 (1630)	2400		

Notes : (*) Daytime only - OCH and MDH AAL

Timing		FAF / THR 8.3 NM	
KT	MIN . SEC	KT	MIN . SEC
90	5 Min 32	140	3 Min 33
100	4 Min 59	150	3 Min 19
110	4 Min 32	160	3 Min 07
120	4 Min 09	170	2 Min 56
130	3 Min 50	180	2 Min 46

CORRECTIONS : First edition

TABULAR DESCRIPTION

RNP RWY 13

Serial Number	Path Descriptor	Waypoint Identifier	Fly- Over	Course °M(°T)	Magnetic Variation	Distance (NM)	Turn Direction	Altitude (ft)	Speed limit (Kt)	VPA / TCH	Navigation Specification
10	IF	NETUS	-					+6000	230	-	RNP APCH
20	TF	ETUDO	-	043 (033.7)		6.0		+4000	230	-	RNP APCH
10	IF	DURBO	-					+4000	230	-	RNP APCH
20	TF	ETUDO	-	223 (213.7)		6.0		+4000	230	-	RNP APCH
10	IF	ETUDO	-					+4000	230	-	RNP APCH
20	TF	NA502	-	133 (123.7)		5.0		@3000	230	-	RNP APCH
30	TF	RW13	Y	133 (123.7)	+9.0	8.3		@360	-	-3/15	RNP APCH
40	TF	NA504	Y			3.0	L		-	-	RNP APCH
50	DF	DURBO	-						230		
10	IF	ETUDO							-		
20	HM	ETUDO	Y	133 (123.7)			R	+4000	230	-	RNP APCH

RNP RWY13		
Waypoint Identifier	Coordinates	
NETUS	12°18'20.547"S	049°02'27.748"E
DURBO	12°08'18.855"S	049°09'15.707"E
ETUDO	12°13'19.400"S	049°05'51.692"E
NA502	12°16'06.768"S	049°10'06.479"E
RW13	12°20'44.261"S	049°17'09.333"E
NA504	12°22'24.583"S	049°19'42.337"E