

Tel : +(261) 20.22.581.13
 +(261) 20.22.581.14
 +(261) 33.23.370.01

Fax : NIL

AFTN : FMMMYNYX

E-mail : bnitan@asecna.org

AntananarivoNOF@gmail.com

Web : <https://aim.asecna.aero>



**BUREAU NOTAM INTERNATIONAL
 D'ANTANANARIVO**

**B.P. 46 Ivato Aéroport Antananarivo -
 MADAGASCAR**

**AIRAC AIP SUP
 NR 50/A/22FM
 02 NOV 2022**

LA REUNION* - MADAGASCAR - MAYOTTE* - UNION DES COMORES

* The AIC, AMDT, AIP and AIP SUP concerning these islands are published on <https://sia.aviation-civile.gouv.fr>

FMMS

Nouvelles procédures d'approche aux instruments

New instrument approach procedures

<i>Effective date :</i>	29 DEC 2022
<i>Validity :</i>	PERM

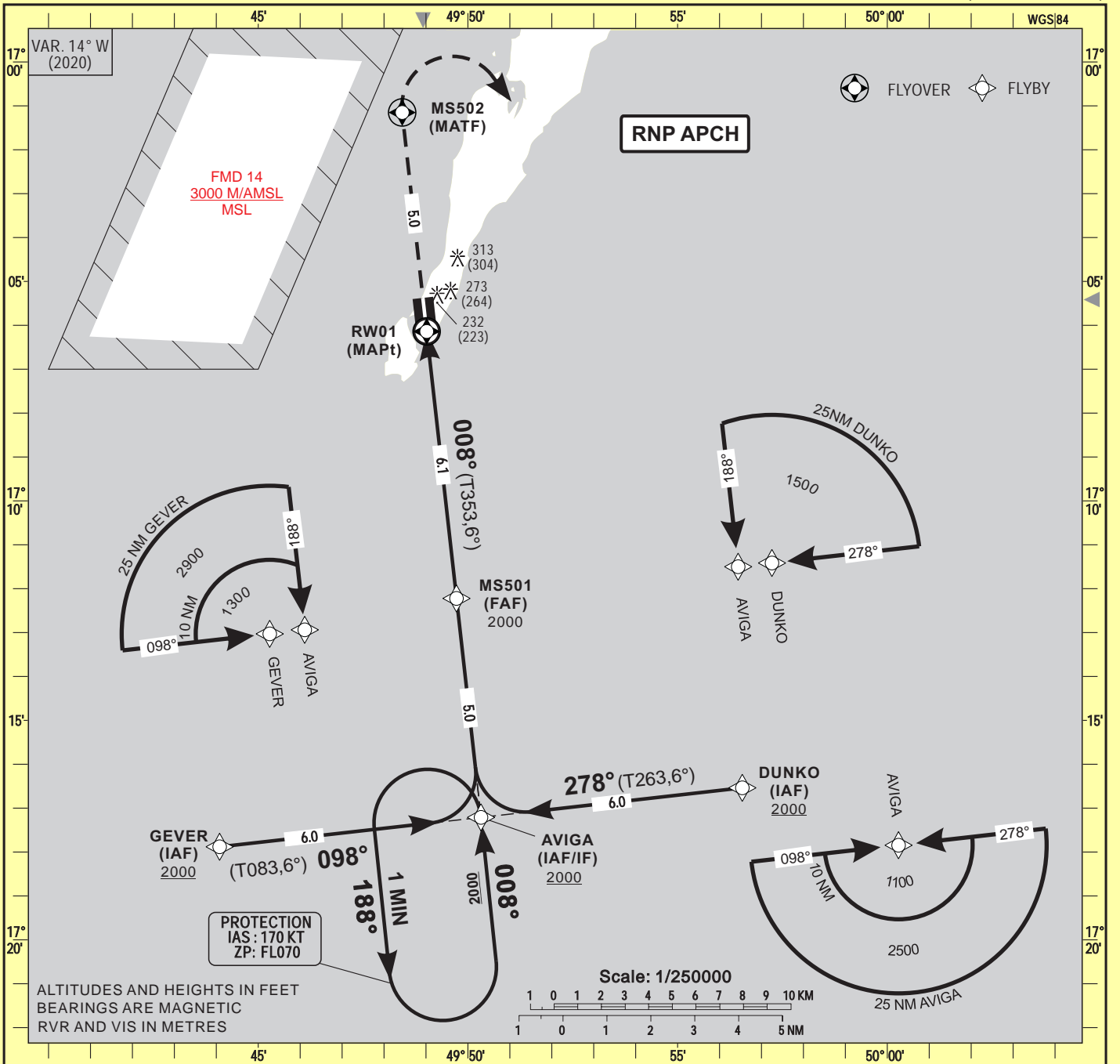
Les cartes qui sont relatives aux nouvelles procédures d'approche aux instruments « RNP - RWY 01 » et « RNP - RWY 19 » concernant l'aéroport de SAINTE-MARIE sont publiées dans le présent supplément d'AIP avant leur insertion dans l'AIP.

The charts that are relative to the new instrument approach procedures « RNP - RWY 01 » and « RNP - RWY 19 » concerning SAINTE-MARIE airport are published in this AIP supplement before inserting them in the AIP.

AMEND ASECNA AIP :

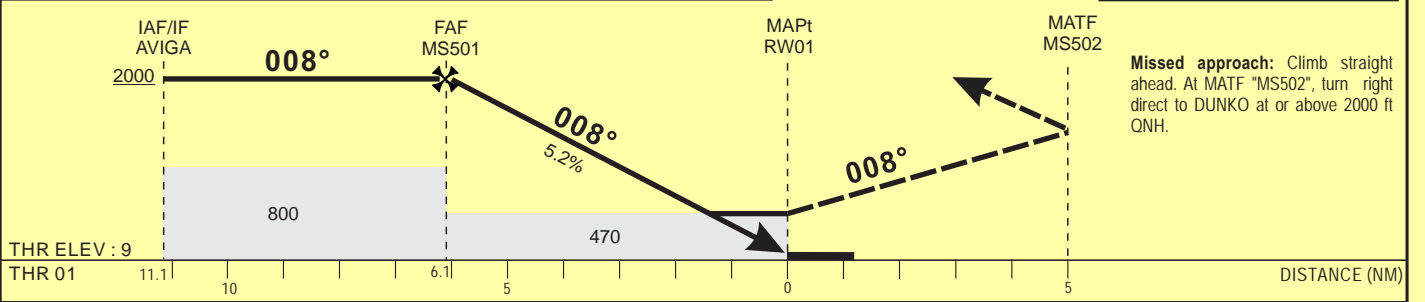
- 09AD2-FMMS-IAC-RNP01
- 09AD2-FMMS-IAC-RNP01-DATA
- 09AD2-FMMS-IAC-RNP19
- 09AD2-FMMS-IAC-RNP19-DATA

THIS AIP SUP HAS 01 PAGE AND 2 APPENDICES



Distance to THR 01 (NM)		FAF	5	4	3	2
Altitude (ft)		2000	1650	1340	1020	700

TRANSITION ALTITUDE : 3500



Missed approach: Climb straight ahead. At MATF "MS502", turn right direct to DUNKO at or above 2000 ft QNH.

CAT	LNAV			Circling(*)				RVR for take-off CATA - B : 400
	OCA (OCH)	MDA (MDH)	RVR	OCA (OCH)	MDA	MDH	VIS	
A	469 (460)	470 (460)	1500	608 (599)	610	(600)	1500	Timing FAF / THR 6.1 NM KT MIN . SEC 90 4 Min 04 100 3 Min 40 110 3 Min 20 120 3 Min 03 130 2 Min 49
B							1600	

Notes : (*) Daytime only - OCH and MDH AAL

CORRECTIONS : First edition

TABULAR DESCRIPTION

RNP RWY 01

Serial Number	Path Descriptor	Waypoint Identifier	Fly-Over	Course °M(°T)	Magnetic Variation	Distance (NM)	Turn Direction	Altitude (ft)	Speed limit (Kt)	VPA / TCH	Navigation Specification
10	IF	GEVER	-					+2000	170	-	RNP APCH
20	TF	AVIGA	-	098 (083.6)		6.0		+2000	170	-	RNP APCH
10	IF	DUNKO	-					+2000	170	-	RNP APCH
20	TF	AVIGA	-	278 (263.6)		6.0		+2000	170	-	RNP APCH
10	IF	AVIGA	-					+2000	170	-	RNP APCH
20	TF	MS501	-	008 (353.6)		5.0		@2000	170	-	RNP APCH
30	TF	RW01	Y	008 (353.6)	+14.0	6.1		@59	-	-3/15	RNP APCH
40	TF	MS502	Y			5.0	R		-	-	RNP APCH
50	DF	DUNKO	-					+2000	170	-	RNP APCH
10	IF	AVIGA							-		RNP APCH
20	HM	AVIGA	Y	008 (353.6)			L	+2000	170	-	RNP APCH

RNP RWY 01		
Waypoint Identifier	Coordinates	
GEVER	17°17'52.985"S	049°44'04.853"E
AVIGA	17°17'12.630"S	049°50'18.756"E
DUNKO	17°16'32.242"S	049°56'32.633"E
MS501	17°12'13.309"S	049°49'43.667"E
RW01	17°06'08.292"S	049°49'00.921"E
MS502	17°01'08.961"S	049°48'25.902"E

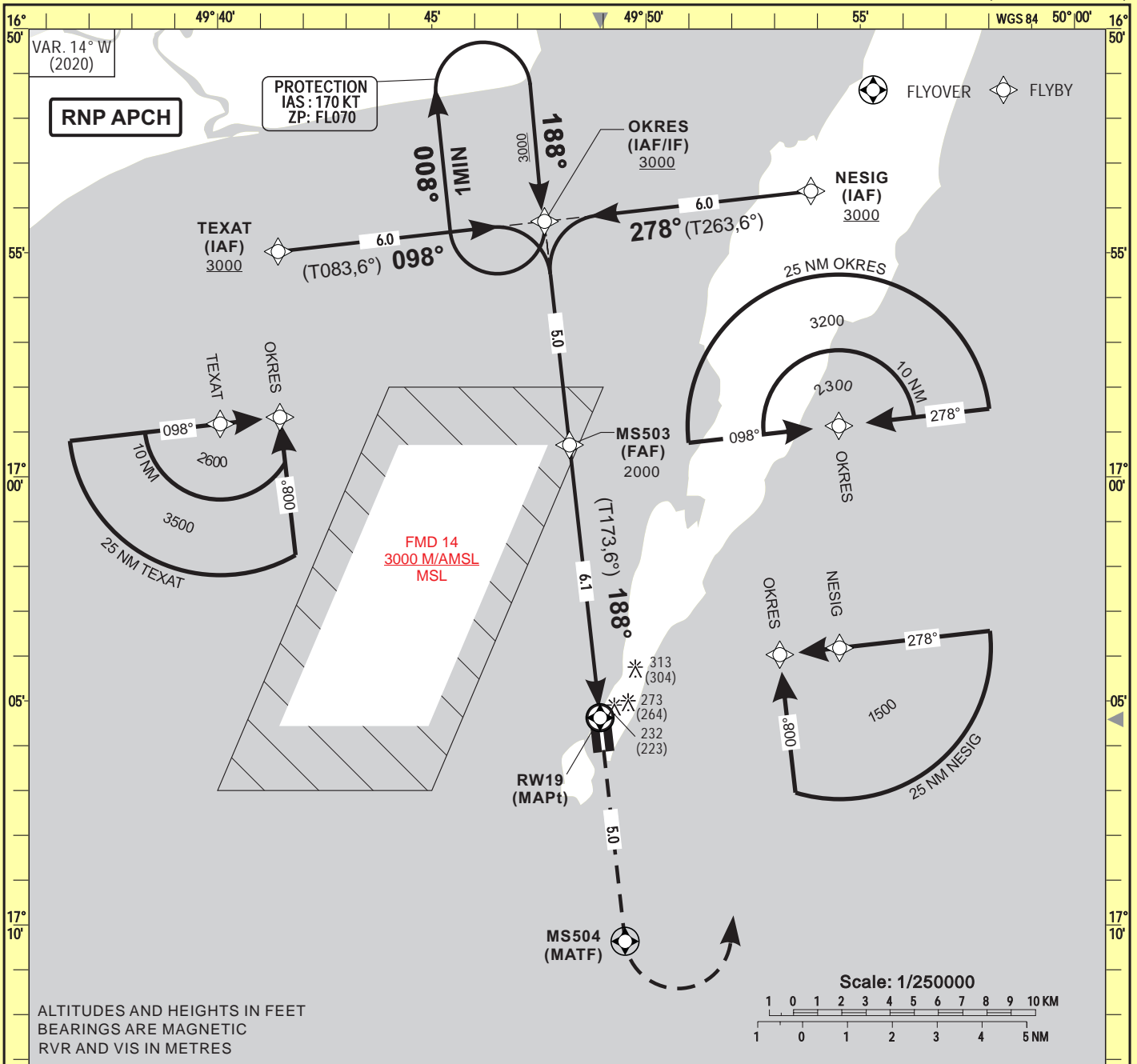
INSTRUMENT APPROACH CHART-ICAO

AERODROME ELEV 9 FT

HEIGHTS RELATED TO THR RWY19 - ELEV 9 FT

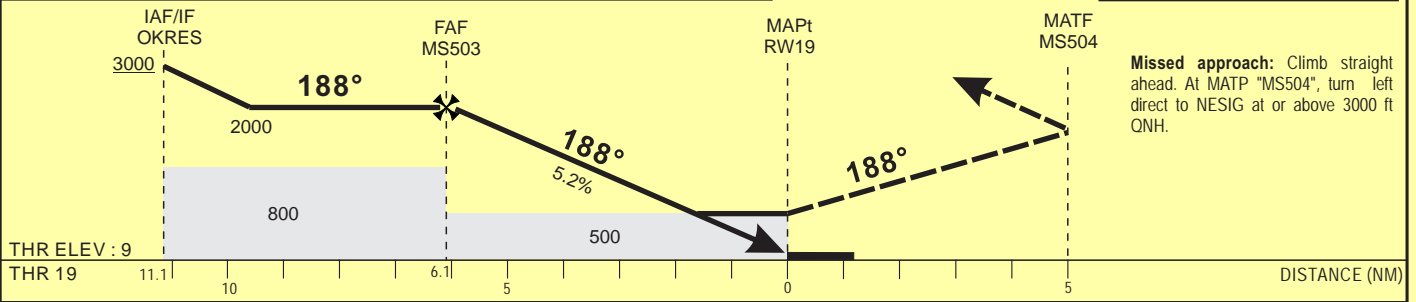
AFIS 120.3

SAINTE MARIE (FMMS)
RNP - RWY 19
 (ACFT CAT A, B)



Distance to THR 19 (NM)		FAF	5	4	3	2	
Altitude (ft)		2000	1650	1340	1020	700	

TRANSITION ALTITUDE : 3500



Missed approach: Climb straight ahead. At MATF "MS504", turn left direct to NESIG at or above 3000 ft QNH.

CAT	LNAV			Circling(*)				RVR for take-off CATA - B : 400
	OCA (OCH)	MDA (MDH)	RVR	OCA (OCH)	MDA	MDH	VIS	
A	492 (483)	500 (490)	1500	608 (599)	610	(600)	1500	Timing FAF / THR 6.1 NM KT MIN . SEC 90 4 Min 04 100 3 Min 40 110 3 Min 20 120 3 Min 03 130 2 Min 49
B							1600	

Notes : (*) Daytime only - OCH and MDH AAL

CORRECTIONS : First edition

TABULAR DESCRIPTION

RNP RWY 19

Serial Number	Path Descriptor	Waypoint Identifier	Fly- Over	Course °M(°T)	Magnetic Variation	Distance (NM)	Turn Direction	Altitude (ft)	Speed limit (Kt)	VPA / TCH	Navigation Specification
10	IF	TEXAT	-					+3000	170	-	RNP APCH
20	TF	OKRES	-	098 (083.6)		6.0		+3000	170	-	RNP APCH
10	IF	NESIG	-					+3000	170	-	RNP APCH
20	TF	OKRES	-	278 (263.6)		6.0		+3000	170	-	RNP APCH
10	IF	OKRES	-					+3000	170	-	RNP APCH
20	TF	MS503	-	188 (173.6)		5.0		@2000	170	-	RNP APCH
30	TF	RW19	Y	188 (173.6)	+14.0	6.1		@59	-	-3/15	RNP APCH
40	TF	MS504	Y			5.0	L		-	-	RNP APCH
50	DF	NESIG	-					+3000	170		
10	IF	OKRES	-						-		RNP APCH
20	HM	OKRES	Y	188 (173.6)			R	+3000	170	-	RNP APCH

RNP RWY 19		
Waypoint Identifier	Coordinates	
TEXAT	16°54'58.371"S	049°41'24.734"E
OKRES	16°54'18.060"S	049°47'37.881"E
NESIG	16°53'37.559"S	049°53'50.984"E
MS503	16°59'17.396"S	049°48'12.858"E
RW19	17°05'22.494"S	049°48'55.561"E
MS504	17°10'21.821"S	049°49'30.607"E