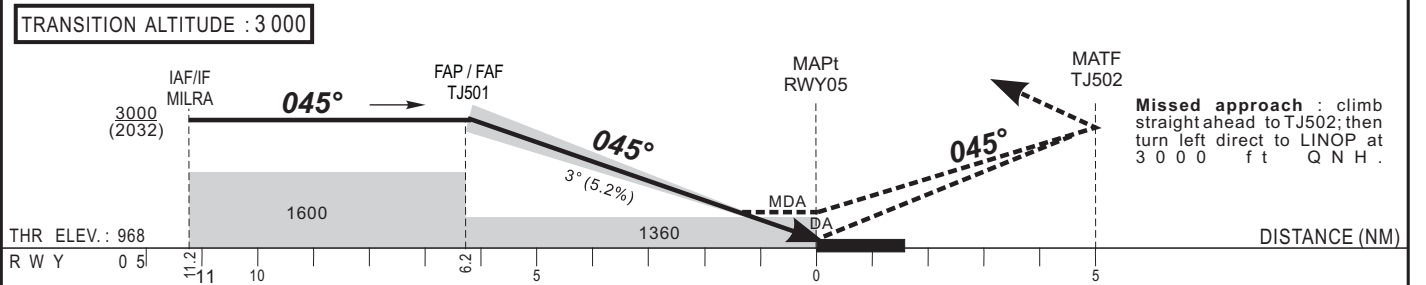


Distance to ILS "IFL" (NM)	FAP/FAF			6	5	4	3	2	1	
Altitude (ft)	3 000			2930	2610	2300	1980	1660	1340	

- RDH : 15 m
- Minimum temperature : 10°C



CAT	Cat.1				LOC				CIRCLING (3)				RVR for take-off: CAT A - B - C : 400 CAT.D : 400	
	OCA (OCH)	DA	DH	RVR(1)	RVR(2)	OCA (OCH)	MDA	MDH	RVR(1)	RVR(2)	OCA (OCH)	MDA		MDH
A	1230 (262)	1230 (270)		650	1200	1351 (383)	1360 (390)		900	1500	1460 (492)	1460 (500)		1500
B	1242 (274)	1250 (280)		650	1200	1351 (383)	1360 (390)		1000	1500	1460 (492)	1460 (500)		1600
C	1250 (282)	1250 (290)		650	1200	1351 (383)	1360 (390)		1000	1800	1852 (884)	1860 (890)		2400
D	1261 (293)	1270 (300)		650	1200	1351 (383)	1360 (390)		1400	2000	1852 (884)	1860 (890)		3600

Notes : (1) With approach lights - (2) Without approach lights
(3) Circling in the North-West of the aerodrome and in daytime only, OCH and MDH AAL.

KT	MIN		SEC		KT	MIN		SEC			
	MIN	SEC	MIN	SEC		MIN	SEC	MIN	SEC		
90	4	08	140	2	39	110	3	23	160	2	20
100	3	43	150	2	29	120	3	06	170	2	11
110	3	31	160	2	11	130	2	52	180	2	04

AMDT 12/18: NORMALIZATION