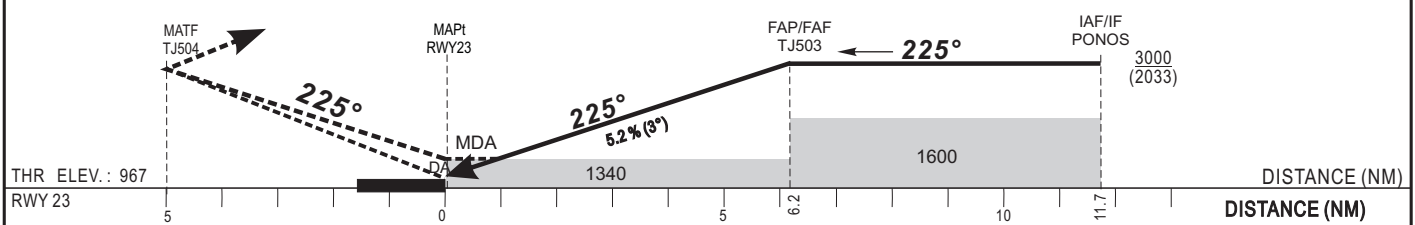


Distance to THR (NM)	FAP/FAF	1	2	3	4	5	6
Altitude (ft)	3000	1340	1660	2000	2400	2610	2930

Missed approach: climb straight ahead to TJ504; then turn right direct to APOXI at 3000 ft QNH.

TRANSITION ALTITUDE : 3000



CAT	LNAV/VNAV				LNAV			CIRCLING (*)				RVR for take-off: CAT A - B - C : 400 CAT.D : 400	
	OCA (OCH)	DA	DH	RVR	OCA (OCH)	MDA	MDH	RVR	OCA (OCH)	MDA	MDH		VIS
A	1273 (306)	1280 (310)	1500	1337 (370)	1340 (370)	1500	1460 (492)	1460 (500)	1500				
B	1285 (318)	1290 (320)	1500	1337 (370)	1340 (370)	1500	1460 (492)	1460 (500)	1600				
C	1304 (337)	1310 (340)	1800	1337 (370)	1340 (370)	2000	1852 (884)	1860 (890)	2400				
D	1326 (359)	1330 (360)	2000	1337 (370)	1340 (370)	2000	1852 (884)	1860 (890)	3600				

Notes :

- (*) Circling in the North-West of the aerodrome and in daytime only, OCH and MDH AAL.
- Minimum temperature : 10°C
- RDH : 15 m

Timing FAP / THR 6.2 NM	
KT	MIN SEC
90	4 Min 08
100	3 Min 43
110	3 Min 23
120	3 Min 06
130	2 Min 52

AMDT 12/18: NORMALIZATION