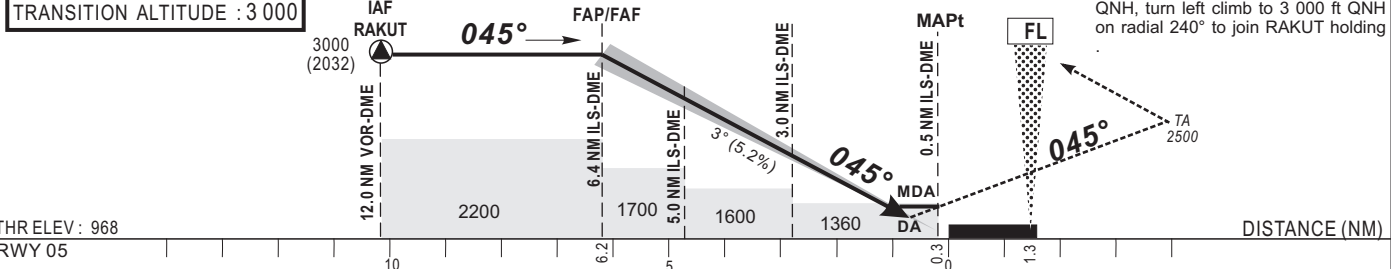


Distance to ILS-DME (NM)	FAP/FAF	5	4	3	2
Altitude (ft)	3000	2550	2230	1910	1590

TRANSITION ALTITUDE : 3 000



Missed approach: Climb straight ahead on runway axis. At 2 500 ft QNH, turn left climb to 3 000 ft QNH on radial 240° to join RAKUT holding

AMDT 12/18: NORMALIZATION

	Cat.1				LOC				CIRCLING (3)				RVR for take-off: CAT A - B - C : 400 CAT D : 400				
	OCA (OCH)	DA	DH	RVR(1)	RVR(2)	OCA (OCH)	MDA	MDH	RVR(1)	RVR(2)	OCA (OCH)	MDA		MDH	VIS		
A	1230 (262)	1230 (270)	650	1200	1351 (383)	1360 (390)	900	1500	1460 (492)	1460 (500)	1500	Timing FAF / THR 6.2 NM					
B	1242 (274)	1250 (280)	650	1200	1351 (383)	1360 (390)	1000	1500	1460 (492)	1460 (500)	1600	KT	MIN	SEC	KT	MIN	SEC
C	1250 (282)	1250 (290)	650	1200	1351 (383)	1360 (390)	1000	1800	1852 (884)	1860 (890)	2400	90	4	Min 08	140	2	Min 39
D	1261 (293)	1270 (300)	650	1200	1351 (383)	1360 (390)	1400	2000	1852 (884)	1860 (890)	3600	100	3	Min 43	150	2	Min 29
												110	3	Min 23	160	2	Min 20
												120	3	Min 06	170	2	Min 11
												130	2	Min 52	180	2	Min 04

Notes : (1) With approach lights - (2) Without approach lights
(3) Circling in the North-West of the aerodrome and in daytime only, OCH and MDH AAL.
- RDH: 50