

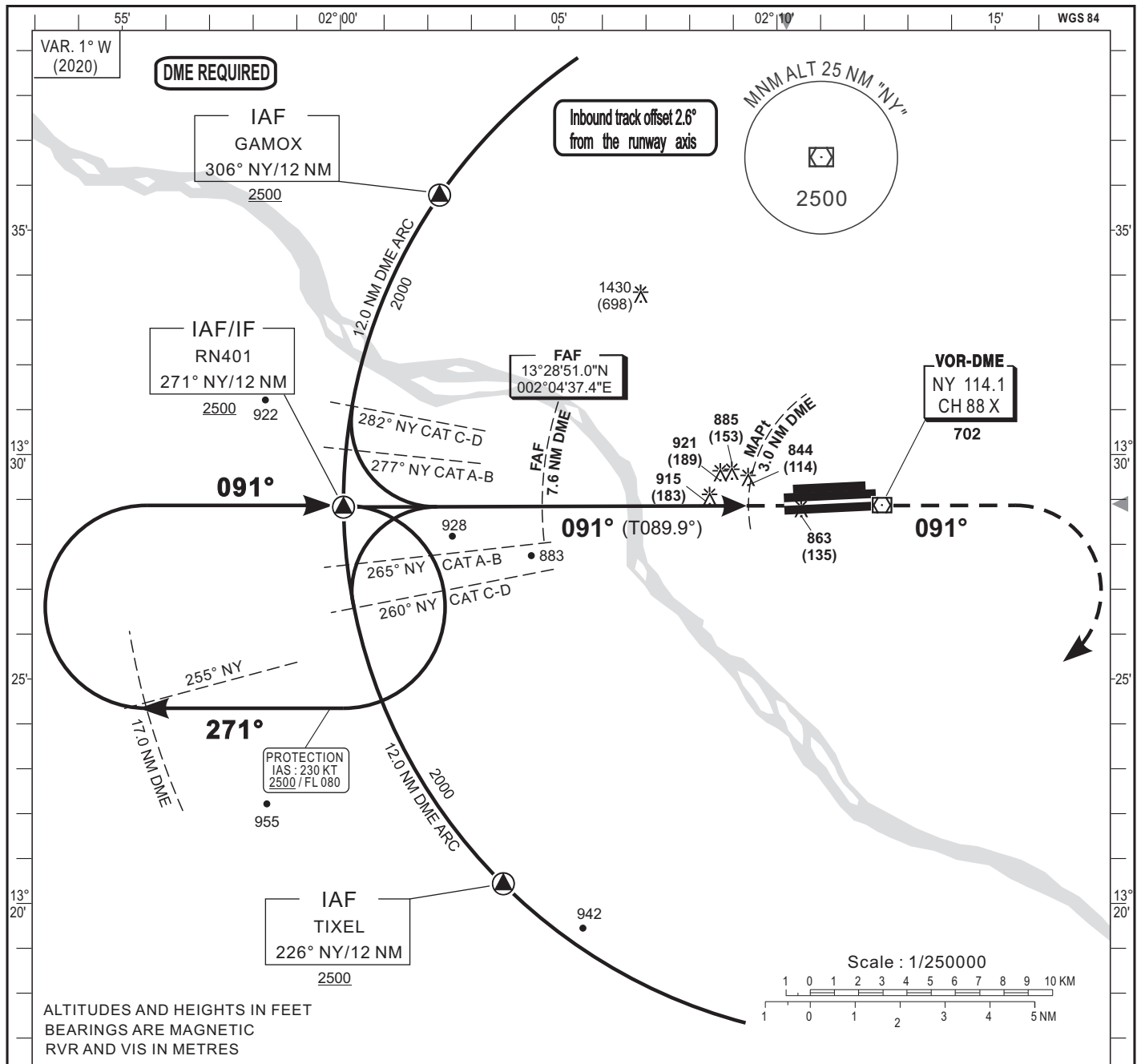
**INSTRUMENT
APPROACH
CHART-ICAO**

HEIGHTS RELATED TO AERODROME ELEV 732 FT

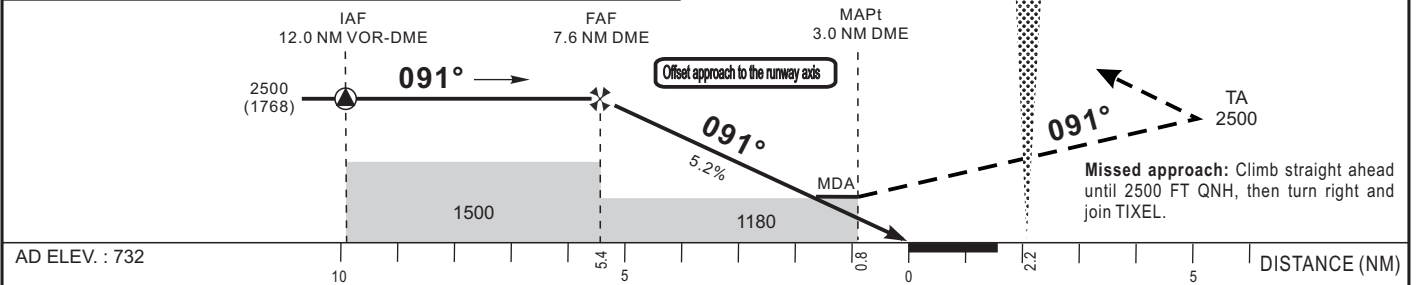
THR RWY09R - ELEV 728 FT

APP 131.3
TWR 119.7

NIAMEY / Diori Hamani (DRRN)
VOR - RWY 09R
(ACFT CAT A, B, C, D)



| | | | | |
|---------------------------|------|------|------|------|
| DME distance from NY (NM) | FAF | 6 | 5 | 4 |
| Altitude (ft) | 2500 | 1990 | 1670 | 1360 |



| CAT | VOR | | | | CIRCLING (3) | | | | RVR for take-off : CATA-B-C-D : 400 |
|-----|------------|------------|-----|--------|--------------|------------|------------|------|--|
| | OCA (OCH) | MDA | MDH | RVR(1) | RVR(2) | OCA (OCH) | MDA | MDH | |
| A | | | | 900 | 1500 | 1216 (484) | 1220 (490) | 1500 | |
| B | 1178 (446) | 1180 (450) | | 1000 | 1500 | 1224 (492) | 1230 (500) | 1600 | |
| C | | | | 1000 | 1800 | 1325 (593) | 1330 (600) | 2400 | |
| D | | | | 1400 | 2000 | 1421 (689) | 1430 (690) | 3600 | |

Notes: (1) With approach line - Without approach line - (3) Daytime only

| Timing FAF / THR 5.4 NM | | | | | |
|----------------------------|-----|--------|-----|-----|--------|
| KT | MIN | SEC | KT | MIN | SEC |
| 90 | 3 | Min 36 | 140 | 2 | Min 19 |
| 100 | 3 | Min 14 | 150 | 2 | Min 10 |
| 110 | 2 | Min 57 | 160 | 2 | Min 01 |
| 120 | 2 | Min 42 | 170 | 1 | Min 54 |
| 130 | 2 | Min 30 | 180 | 1 | Min 48 |

CORRECTIONS : Timing distance reference.