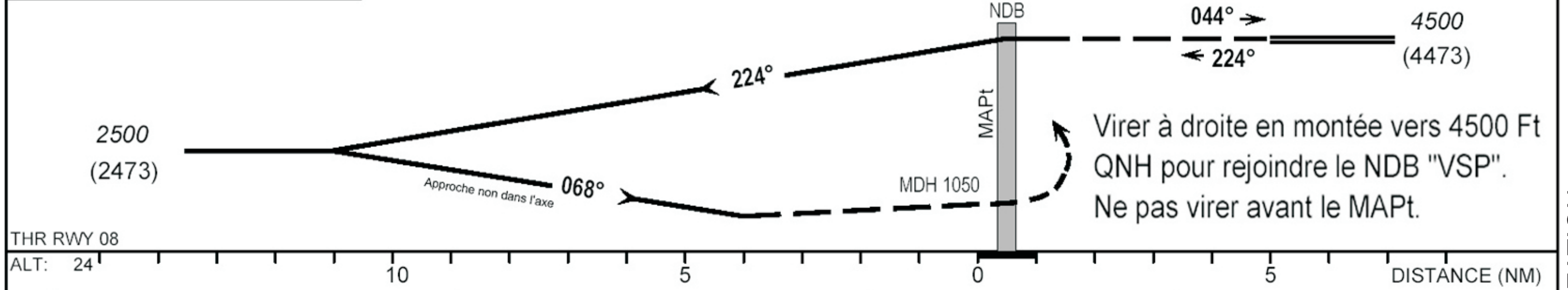


ALTITUDE DE TRANSITION 4500



THR RWY 08
ALT: 24' 10 5 0 5 DISTANCE (NM)

CAT	NDB «VSP»			MVL			RVR au decolage CAT C-D : 300			
	OCA (OCH)	MDA (MDH)	RVR	OCA (OCH)	MDA (MDH)	VH	Temps			
A							KT		MIN SEC	
B							KT		MIN SEC	
C	1076 (1049)	1080 (1050)	2000	2693 (2666)	2700 (2670)	2400	90		140	
D	1076 (1049)	1080 (1050)	2000	2693 (2666)	2700 (2670)	3600	100		150	
							110		160	
							120		170	
							130		180	