

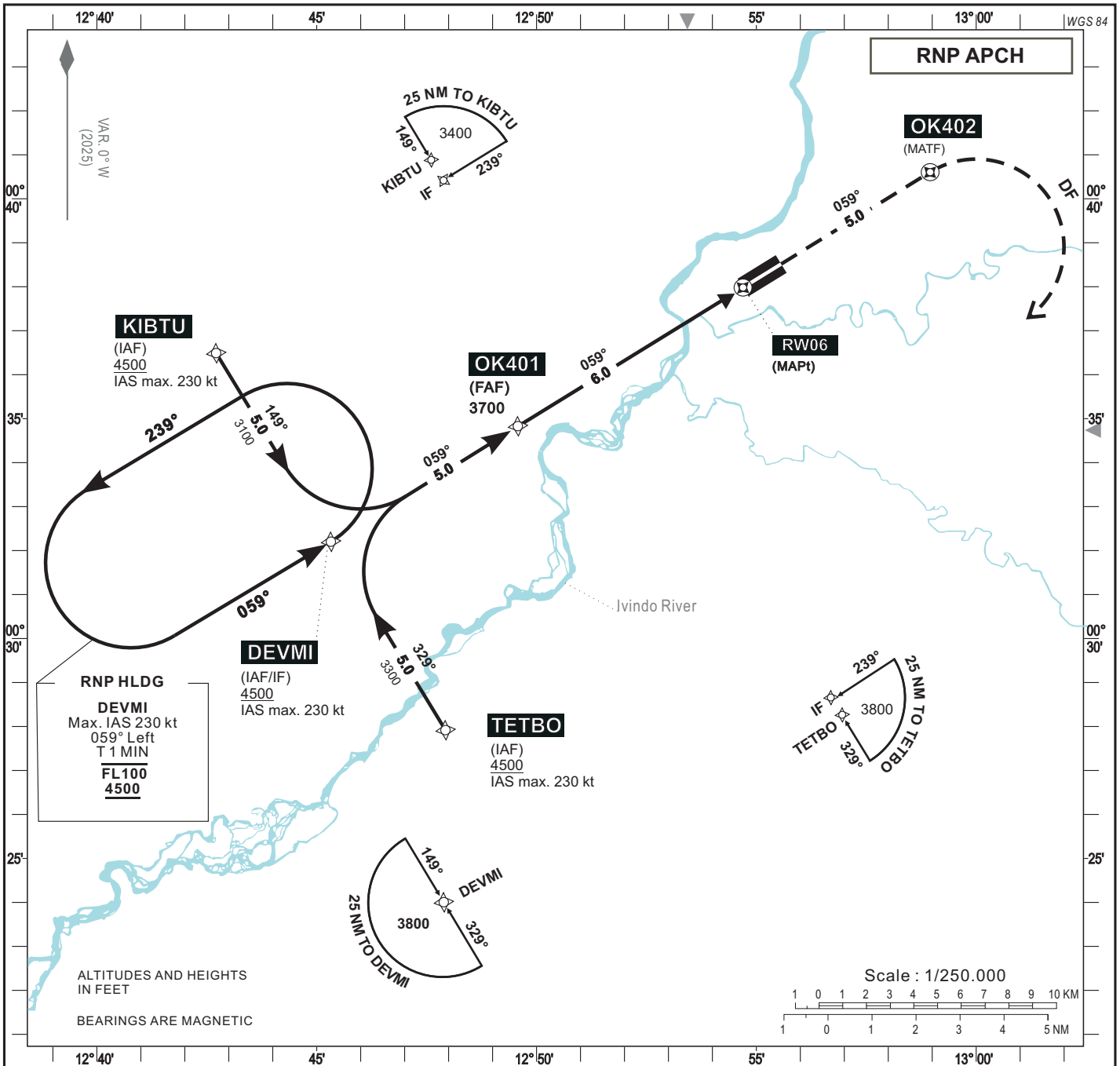
**INSTRUMENT
APPROACH CHART**
Categories A-B-C-D

AERODROME ELEV : 1736
THR RWY 06 ELEV : 1736
HEIGHTS RELATED TO THR RWY 06 ELEVATION

AFIS : MAKOKOU INFORMATION 118.4

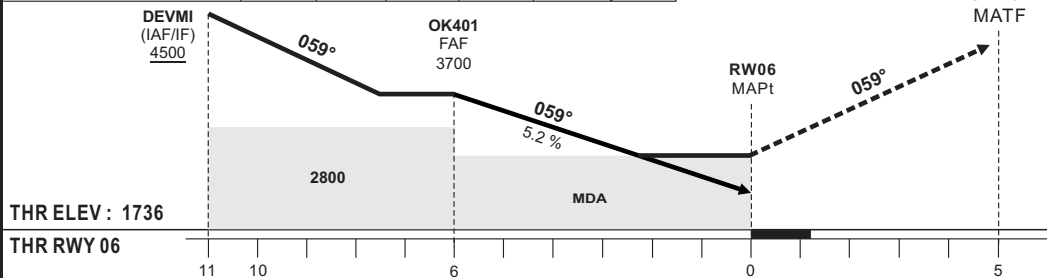
MAKOKOU (FOOK)

RNP RWY 06



Distance to THR 06 (NM)	FAF	5	4	3	2	RW06
Altitude (ft)	3700	3380	3060	2745	2425	

TRANSITION ALTITUDE : 6000



MISSED APPROACH

Climb straight ahead.
At OK402, turn right direct to TETBO at/or above 4500 ft.
IAS max. 230 kt.

Do not turn before MAPt

CAT	LNAV					CIRCLING (1)					VIS
	OCA	OCH	MDA	MDH	RVR	OCA	OCH	MDA	MDH		

A	2192 (456)	2200 (460)	1500	2192 (456)	2200 (470)	1500	
B			1500	2362 (626)	2370 (630)	1600	
C			2000	2460 (724)	2460 (730)	2400	
D			2000	2460 (724)	2460 (730)	3600	

Notes: (1) Daytime only. OCH and MDH AAL
RVR AND VIS IN METERS
TCH : 15 m

Timing : FAF/THR 6.0 NM					
KT	MIN	SEC	KT	MIN	SEC
90	4	00	140	2	34
100	3	36	150	2	24
110	3	16	160	2	15
120	3	00	170	2	07
130	2	46	180	2	00

NEW EDITION