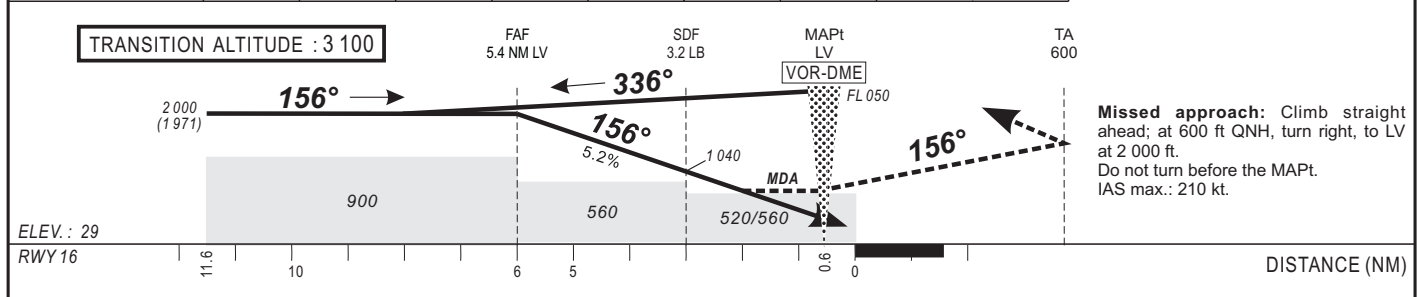


Distance to VOR-DME (NM)	FAF		6	5	4	3	2	1	Notes : VOR X is a procedure with DME INOP.
Altitude (ft)	2 000			1 870	1 550	1 230	910	590	



CAT	VOR Y				VOR X				RVR for take-off:	
	OCA (OCH)	MDA	MDH	RVR(1) RVR(2)	OCA (OCH)	MDA	MDH	RVR(1) RVR(2)	CAT A - B - C	CAT D
A	512 (483)	520 (490)		1000 1500	555 (526)	560 (530)		1000 1500	400	400
B	512 (483)	520 (490)		1200 1500	555 (526)	560 (530)		1200 1500		
C	512 (483)	520 (490)		1200 2000	555 (526)	560 (530)		1200 2000		
D	512 (483)	520 (490)		1600 2000	555 (526)	560 (530)		1600 2000		

Notes : - (1) With approach lights - (2) Without approach lights.

KT	Timing		FAP / THR 6 NM	
	MIN	SEC	KT	MIN SEC
90	4	00	140	2 Min 34
100	3	36	150	2 Min 24
110	3	16	160	2 Min 15
120	3	00	170	2 Min 07
130	2	46	180	2 Min 00

CORRECTIONS : FOP3 deletion.