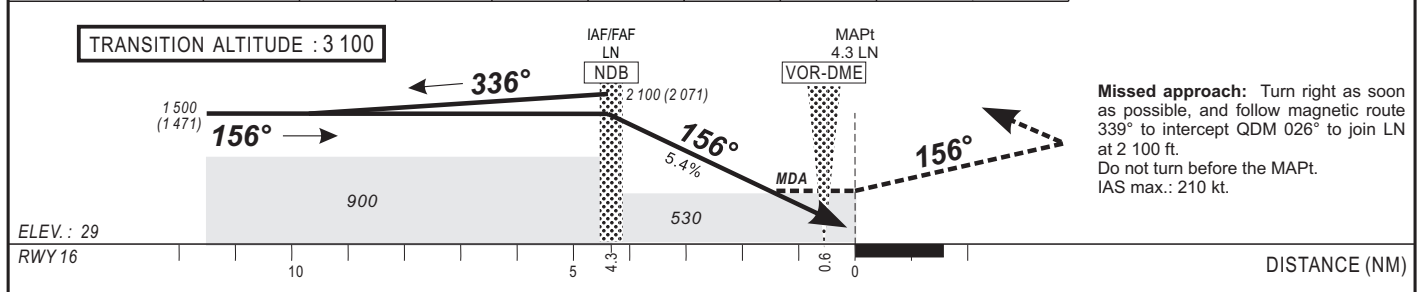


Distance from LN (NM)	FAF		1	2	3	4	-	Notes :
Altitude (ft)	1500		1160	840	510	180	-	



CAT	NDB					RVR for take-off:	
	OCA (OCH)	MDA	MDH	RVR(1)	RVR(2)	CAT A - B - C	CAT D
A	525 (496)	530 (500)		1000	1500	400	400
B	525 (496)	530 (500)		1200	1500		
C	525 (496)	530 (500)		1200	2000		
D	525 (496)	530 (500)		1600	2000		

Notes : - (1) With approach lights - (2) Without approach lights.	Timing	FAF / THR 4.3 NM						
		KT	MIN	SEC	KT	MIN	SEC	
	90	2	Min	52	140	1	Min	51
	100	2	Min	35	150	1	Min	43
	110	2	Min	21	160	1	Min	37
	120	2	Min	09	170	1	Min	31
	130	1	Min	59	180	1	Min	26

CORRECTIONS : FOP3 deletion.