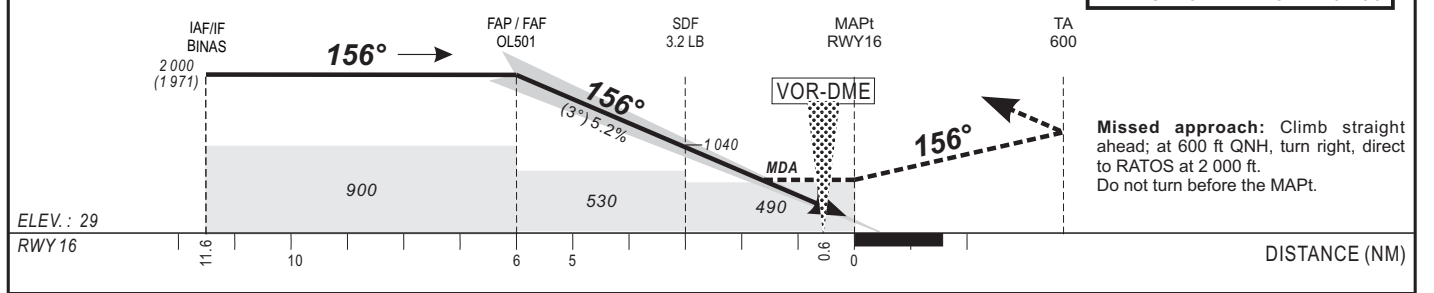


Distance to ILS-DME (NM)	FAP/FAF		6	5	4	3	2	1	Notes: - RDH : 15 m
Altitude (ft)	2000			1610	1290	970	660	340	TRANSITION ALTITUDE : 3100



CAT	CAT. 1				LOC				RVR for take-off: CAT A - B - C : 400 CAT D : 400		
	OCA (OCH)	DA	DH	RVR(1) RVR(2)	OCA (OCH)	MDA MDH	RVR(1) RVR(2)	KT	MIN SEC	KT	MIN SEC
A	255 (226)	260 (230)		600 1000	489 (460)	490 (460)	1000 1500				
B	267 (238)	270 (240)		600 1000	489 (460)	490 (460)	1200 1500				
C	275 (246)	280 (250)		600 1000	489 (460)	490 (460)	1200 2000				
D	286 (257)	290 (260)		650 1200	489 (460)	490 (460)	1600 2000				

Notes :- (1) With approach lights - (2) Without approach lights.
- Climbing sectors : between 012° "LV" and 234° "LV".

CORRECTIONS : FOP3 deletion.