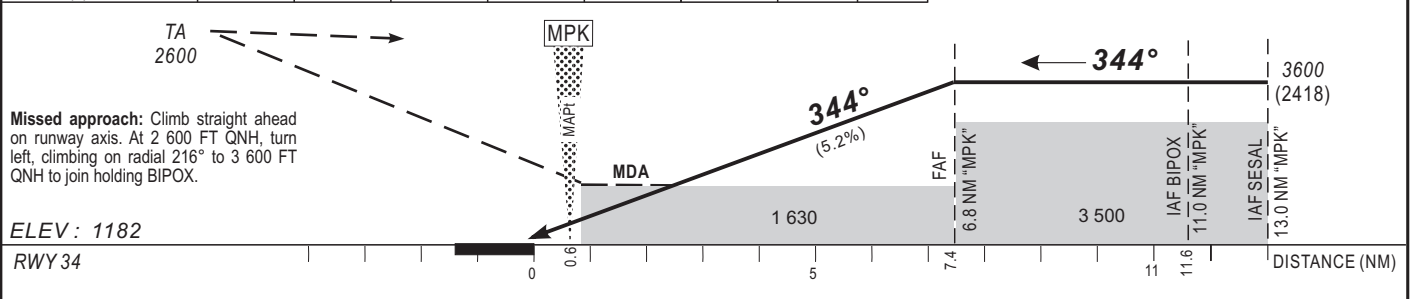


Distance to MPK (NM)	1	2	3	4	5	6	FAF
Altitude (ft)	1740	2060	2380	2700	3020	3340	3600



CAT	VOR Z					CIRCLING(3)				RVR for Take-off	
	OCA (OCH)	MDA	MDH	RVR(1)	RVR(2)	OCA (OCH)	MDA	MDH	VIS	CAT A - B - C	CAT D
A	1621 (439)	1630 (440)	900	1500	1788 (606)	1790 (610)	1500			400	400
B	1621 (439)	1630 (440)	1000	1500	1788 (606)	1790 (610)	1600			400	400
C	1621 (439)	1630 (440)	1000	1800	1901 (719)	1910 (720)	2400			400	400
D	1621 (439)	1630 (440)	1400	2000	1901 (719)	1910 (720)	3600			400	400

**Notes:** - (1) With approach lights - (2) Without approach lights  
- (3) OCH and MDH AAL - Circling allowed in the west of the aerodrome - Daytime only

KT	Timing:		KT	Timing:	
	MIN	SEC		MIN	SEC
90	4	32	140	2	55
100	4	05	150	2	43
110	3	43	160	2	33
120	3	24	170	2	24
130	3	08	180	2	16

AMDT 12/18 - NORMALIZATION